



## AIR CONDITIONERS



### Features

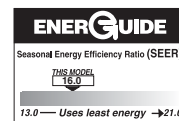
- Outdoor air conditioner designed for ground level or rooftop installations. These units offer comfort and dependability for single, multi-family and light commercial applications.
- Painted louvered steel cabinet
- Easily accessible control box
- Condenser coils constructed with copper tubing and enhanced aluminum fins
- Grille/Motor mount for quiet fan operation
- Filter Drier (shipped – not installed)

### WA16 SERIES

Efficiency 14 SEER/11.7-12.2 EER

Nominal Sizes 1.5 to 3 Ton

[5.28 to 10.6 kW]



*“Proper sizing and installation of equipment is critical to achieve optimal performance. Split system air conditioners and heat pumps must be matched with appropriate coil components to meet ENERGY STAR criteria. Ask your Contractor for details or visit [www.energystar.gov](http://www.energystar.gov).”*

## TABLE OF CONTENTS

Model Number Identification .....	3-4
Electrical & Physical Data .....	5
Unit Dimensions .....	6
Refrigerant Line Size Information .....	7-10
Performance Data .....	11-17
Limited Warranty .....	18

## Air Conditioners\*

W	A	14	24	W	J	1	N	A	*
Brand	Product Category	SEER	Capacity BTU/HR	Major Series*	Voltage	Type	Controls	Minor Series**	Option Code
Weather King	A - Air Conditioners	13 - 13 SEER 14 - 14 SEER 16 - 16 SEER	18 - 18,000 [5.28 kW] 24 - 24,000 [7.03 kW] 30 - 30,000 [8.79 kW] 36 - 36,000 [10.55 kW] 48 - 48,000 [14.07 kW] 60 - 60,000 [17.58 kW]	A - 1st Design W - Southwest Region	J - 1ph, 208-230/60 C - 3ph, 208-230/60 D - 3ph, 460/60	1 - Single-stage	N - Non-Communicating	A - 1st Design	N/A

## Heat Pumps (For Reference)\*\*

W	P	14	24	A	J	1	N	A	*
Brand	Product Category	SEER	Capacity BTU/HR	Major Series*	Voltage	Type	Controls	Minor Series**	Option Code
WeatherKing	P - Heat Pump	14 - 14 SEER	18 - 18,000 [5.28 kW] 24 - 24,000 [7.03 kW] 30 - 30,000 [8.79 kW] 36 - 36,000 [10.55 kW] 42 - 42,000 [12.31 kW] 48 - 48,000 [14.07 kW] 60 - 60,000 [17.58 kW]	A - 1st Design	J - 1ph, 208-230/60	1 - Single-stage	N - Non-Communicating	A - 1st Design	N/A

## Furnace Coils (For Reference)\*\*

I	C	F	24	17	S	I	A	M	C	A	*
Brand	Product Category	Type	Capacity BTU/HR	Width	Efficiency	Metering Device	Major Series*	Orientation	Casing	Minor Series**	Option Code
Generic	C - Evap Coil	F - Furn Coil H - Air-Handler Coil	24 - 24,000 [7.03 kW] 36 - 36,000 [10.55 kW] 48 - 48,000 [14.07 kW] 60 - 60,000 [17.58 kW]	14 - 14" 17 - 17.5" 21 - 21" 24 - 24.5"	S - Standard Eff. M - Mid Eff. H - High Eff.	T-TXV E-EEV P-Piston	A - 1st Design	M - Multipoise V - Vertical only/ H - Dad. convertible Horizontal only	C - Cased U - Uncased	A - 1st Design	N/A

[ ] Designates Metric Conversions

<b>90%+ AFUE Gas Furnaces (For Reference)**</b>											
<u>W</u>	<u>92</u>	<u>P</u>	<u>A</u>	<u>70</u>	<u>2</u>	<u>3</u>	<u>17</u>	<u>M</u>	<u>S</u>	<u>A</u>	
Brand	Series	Motor	Major Rev	Input BTU/HR	Stages	Air Flow	Cabinet Width	Configuration	Nox	Minor Rev	
WeatherKing	92 - 92 AFUE 96 - 96 AFUE	P - PSC T - Constant Torque	A - 1st Design B - 2nd Design C - 3rd Design	040 - 42,000 [12.31 kW] 060 - 56,000 [16.41 kW] 070 - 70,000 [20.51 kW] 085 - 84,000 [24.62 kW] 100 - 98,000 [28.72 kW] 115 - 112,000 [32.82 kW]	1 - Single-stage	3 - up to 3 ton 5 - 3 1/2 up to 5 ton	14 - 14" 17 - 17.5" 21 - 21" 24 - 24.5"	M - Multi	X - Low Nox S - Standard	A - 1st Design	

<b>80% AFUE Gas Furnaces (For Reference)**</b>											
<u>W</u>	<u>80</u>	<u>1</u>	<u>S</u>	<u>075</u>	<u>A</u>	<u>3</u>	<u>17</u>	<u>M</u>	<u>S</u>	<u>A</u>	
Brand	Series	Stages	Motor	Input BTU/HR	Major Rev	Air Flow	Cabinet Width	Configuration	Nox	Minor Rev	
WeatherKing	80 - 80+ AFUE	1 - Single-stage	S - PSC standard T - Constant Torque	050 - 50,000 [15 kW] 075 - 75,000 [22 kW] 100 - 100,000 [29 kW] 125 - 125,000 [37 kW] 150 - 150,000 [44 kW]	A - 1st Design	3 - up to 3 ton 4 - 2 1/2 to 4 ton 5 - 3 1/2 up to 5 ton	14 - 14" 17 - 17.5" 21 - 21" 24 - 24.5"	M - Multi Z - Down & zero clearance down flow	X - Low Nox S - Standard	A - 1st Design	

<b>Air Handlers (For Reference)**</b>												
<u>W</u>	<u>H</u>	<u>1</u>	<u>I</u>	<u>36</u>	<u>17</u>	<u>I</u>	<u>A</u>	<u>N</u>	<u>A</u>	<u>000</u>	<u>I</u>	
Brand	Product Category	Stages of Airflow	Motor Type	Capacity BTU/HR	Width	Coil Size	Metering Device	Controls	Major Series*	Voltage	Minor Series**	Factory Heat Option Code
W - Weather King R - Generic	H - Air Handler F - Front Return	1 - Single-Stage	T - Constant Torque P - PSC	24 - 24,000 [7.03 kW] 36 - 36,000 [10.55 kW]	14 - 14" 17 - 17.5" 21 - 21" 24 - 24.5"	S - Standard Eff. M - Mid Eff. H - High Eff.	T - TEV	N - Non-comm	A - 1st Design Design	A - 1ph, 115/60 J - 1ph, 208-240/60 D - 3ph, 480/60	A - 1st Design	00 - no factory heat with option code *TBD

[ ] Designates Metric Conversions

## Electrical and Physical Data

<b>Physical Data</b>						
Model No. #	WA1618A	WA1624A	WA1630A	WA1636A	WA1648A	WA1660A
<b>Nominal Tonnage</b>	1.5	2.0	2.5	3.0	4.0	5.0
<b>Valve Connections</b>						
Liquid Line O.D. - in.	3/8	3/8	3/8	3/8	3/8	3/8
Suction Line O.D. - in.	3/4	3/4	3/4	3/4	7/8	7/8
<b>Refrigerant (R410A) furnished oz.<sup>1</sup></b>	80.9	85	112	128	207	228
<b>Compressor Type</b>	Scroll					
<b>Outdoor Coil</b>						
Net face area - Outer Coil	11.8	13.7	13.7	21.9	21.9	21.9
Tube diameter - in.	3/8	3/8	3/8	3/8	3/8	3/8
Number of rows	1	1	1	1	2	2
Fins per inch	22	22	22	22	20	20
<b>Outdoor Fan</b>						
Diameter - in.	22	22	24	24	24	24
Number of blades	2	2	2	3	3	3
Motor hp	1/10	1/12	1/8	1/5	1/3	1/3
cfm	2049	2077	2915	3430	3615	3615
rpm	825	841	850	850	1075	1075
watts	122	76	135	228	195	311
<b>Shipping weight - lbs.</b>	157	171	175	201	289	274
<b>Operating weight - lbs.</b>	150	164	168	194	262	267
<b>Electrical Data</b>						
<b>Line Voltage Data (Volts-Phase-Hz)</b>	<b>208/230-1-60</b>	<b>208/230-1-60</b>	<b>208/230-1-60</b>	<b>208/230-1-60</b>	<b>208/230-1-60</b>	<b>208/230-1-60</b>
<b>Maximum overcurrent protection (amps)<sup>2</sup></b>	20	25	25	35	50	60
<b>Minimum circuit ampacity<sup>3</sup></b>	12	15	17	21	29	35
<b>Compressor</b>						
Rated load amps	9.0	11.2	12.8	15.4	21.8	26.4
Locked rotor amps	46	60.8	64	83.9	117	134
<b>Condenser Fan Motor</b>						
Full load amps	0.5	0.36	0.68	1.0	1.7	1.7
Locked rotor amps	1.0	1.0	1.3	2.4	3.2	3.2

<sup>1</sup>Refrigerant charge sufficient for 15 ft. length of refrigerant lines. For longer line set requirements see the installation instructions for information about set length and additional refrigerant charge required.

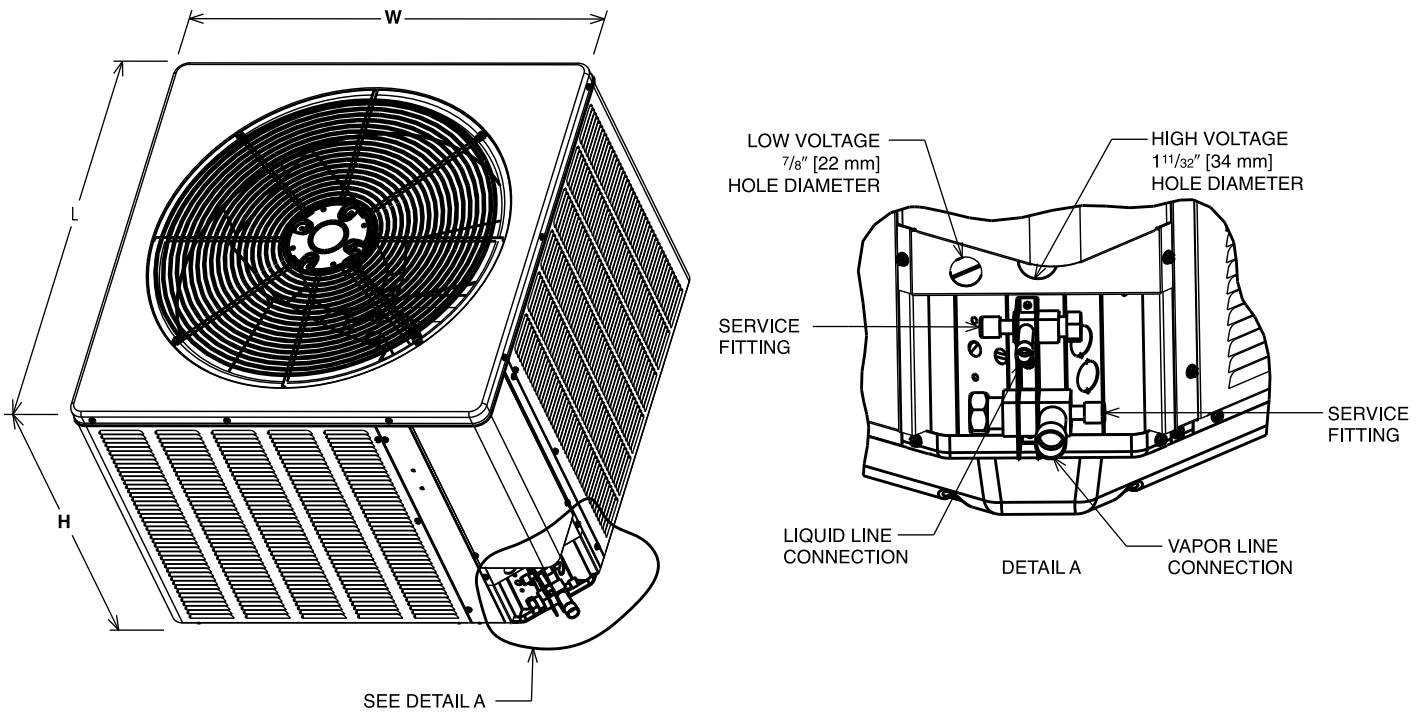
<sup>2</sup>HACR type circuit breaker or fuse.

<sup>3</sup>Refer to National Electrical Code manual to determine wire, fuse and disconnect size requirements.

## Unit Dimensions

MODEL NUMBER	OPERATING						SHIPPING					
	H (Height)		L (Length)		W (Width)		H (Height)		L (Length)		W (Width)	
	INCHES	mm	INCHES	mm	INCHES	mm	INCHES	mm	INCHES	mm	INCHES	mm
WA1618A	24.25	616	27.63	702	27.63	702	24.50	622	28.75	730	28.75	730
WA1624A	24.25	616	27.63	702	27.63	702	24.50	622	28.75	730	28.75	730
WA1630A	27.38	695	31.63	803	31.63	803	27.63	702	32.75	832	32.75	832
WA1636A	35.38	899	31.63	803	31.63	803	35.63	905	32.75	832	32.75	832
WA1648A	35.38	899	31.63	803	31.63	803	35.63	905	32.75	832	32.75	832
WA1660A	35.38	899	31.63	803	31.63	803	35.63	905	32.75	832	32.75	832

[ ] Designates Metric Conversions



NOTE: Illustrations show the deep drawn basepan.

# Condensing Unit Refrigerant Line Size Information

16 SEER Single-Stage Air-Conditioners													
Unit Size	Allowable Liquid Line Size	Allowable Suction Line Size	Apply Long Line Guidelines if Linear Line Length Exceeds Those Shown Below (Feet)	Equivalent Length (Feet)									
				Maximum Vertical Rise (Outdoor Unit Below Indoor Unit) * / Capacity Multiplier									
			WA16	< 25	26-50	51-75	76-100	101-125	126-150	151-175	176-200	201-225	226-250
1.5 Ton **SEE NOTE 3	1/4"	5/8"	N/A	25/1.00	50/0.99	62/0.98	43/0.98	24/0.97	5/0.97	NR	NR	NR	NR
	5/16"	5/8"	190	25/1.00	50/0.99	75/0.98	98/0.98	93/0.97	88/0.97	83/0.96	78/0.96	73/0.95	68/0.94
	3/8"	5/8"	127	25/1.00	50/0.99	75/0.98	100/0.98	100/0.97	100/0.97	100/0.96	100/0.96	100/0.95	100/0.94
	1/4"	3/4"	N/A	25/1.00	50/1.00	62/0.99	43/0.99	24/0.99	5/0.99	NR	NR	NR	NR
	5/16"	3/4"	190	25/1.00	50/1.00	75/0.99	98/0.99	93/0.99	88/0.99	83/0.99	78/0.98	73/0.98	68/0.98
	3/8"	3/4"	127	25/1.00	50/1.00	75/1.00	100/0.99	100/0.99	100/0.99	100/0.99	100/0.99	100/0.98	100/0.98
2 Ton	1/4"	5/8"	N/A	25/0.99	50/0.98	21/0.97	NR	NR	NR	NR	NR	NR	NR
	5/16"	5/8"	180	25/0.99	50/0.98	75/0.97	87/0.96	77/0.95	69/0.94	61/0.93	53/0.92	45/0.91	37/0.90
	3/8"	5/8"	120	25/0.99	50/0.98	75/0.97	100/0.96	100/0.95	100/0.94	98/0.93	95/0.92	92/0.91	89/0.90
	1/4"	3/4"	N/A	25/1.00	50/1.00	21/0.99	NR	NR	NR	NR	NR	NR	NR
	5/16"	3/4"	180	25/1.00	50/1.00	75/0.99	87/0.99	77/0.98	69/0.98	61/0.98	53/0.97	45/0.97	37/0.96
	3/8"	3/4"	120	25/1.00	50/1.00	75/0.99	100/0.99	100/0.98	100/0.98	98/0.98	95/0.97	93/0.97	90/0.96
2.5 Ton	5/16"	5/8"	113	25/0.99	50/0.98	75/0.96	70/0.94	59/0.93	48/0.91	36/0.90	NR	NR	NR
	3/8"	5/8"	75	25/0.99	50/0.98	75/0.96	100/0.94	98/0.93	94/0.91	90/0.90	NR	NR	NR
	5/16"	3/4"	113	25/1.00	50/0.99	75/0.99	70/0.98	59/0.98	48/0.97	36/0.96	25/0.96	13/0.95	NR
	3/8"	3/4"	75	25/1.00	50/0.99	75/0.99	100/0.98	98/0.98	94/0.97	90/0.96	86/0.96	82/0.95	78/0.95
	5/16"	5/8"	73	25/0.99	50/0.97	66/0.94	49/0.92	32/0.90	NR	NR	NR	NR	NR
	3/8"	5/8"	48	25/0.99	50/0.97	75/0.94	95/0.92	89/0.90	NR	NR	NR	NR	NR
3 Ton	5/16"	3/4"	73	25/1.00	50/0.99	66/0.98	49/0.98	32/0.97	15/0.96	NR	NR	NR	NR
	3/8"	3/4"	48	25/1.00	50/0.99	75/0.98	95/0.98	89/0.97	84/0.96	78/0.95	72/0.94	67/0.93	61/0.93
	1/2"	3/4"	24	25/1.00	50/0.99	75/0.98	100/0.98	100/0.97	100/0.96	100/0.95	100/0.94	100/0.93	100/0.93
	5/16"	7/8"	73	25/1.00	50/1.00	66/1.00	49/0.99	32/0.99	15/0.99	NR	NR	NR	NR
	3/8"	7/8"	48	25/1.00	50/1.00	75/1.00	95/0.99	89/0.99	84/0.99	78/0.98	72/0.98	67/0.98	61/0.97
	1/2"	7/8"	24	25/1.00	50/1.00	75/1.00	100/0.99	100/0.99	100/0.99	100/0.98	100/0.98	100/0.98	100/0.97

**NOTES:**

- 1) Do not exceed 200 ft linear line length.
- 2) \*Do not exceed 100 ft vertical separation if outdoor unit is above indoor unit.
- 3) \*\*3/4" suction line should only be used for 1.5 ton systems if outdoor unit is below or at same level as indoor to assure proper oil return.
- 4) Always use the smallest liquid line allowable to minimize refrigerant charge.
- 5) Applications shaded in light gray indicate capacity multipliers between 0.90 and 0.96 which are not recommended, but are allowed.
- 6) Applications shaded in dark gray are not recommended due to excessive liquid or suction pressure drop.

## Condensing Unit Refrigerant Line Size Information (con't.)

16 SEER Single-Stage Air-Conditioners												
Unit Size	Allowable Liquid Line Size	Allowable Suction Line Size	Apply Long Line Guidelines if Linear Line Length Exceeds Those Shown Below (Feet)	Equivalent Length (Feet)							226-250	
				< 25	26-50	51-75	76-100	101-125	126-150	151-175		176-200
				Maximum Vertical Rise (Outdoor Unit Below Indoor Unit) * / Capacity Multiplier								
4 Ton	3/8"	3/4"	0	25 / 0.99	50 / 0.98	75 / 0.96	77 / 0.95	67 / 0.93	57 / 0.92	46 / 0.91	NR	NR
	1/2"	3/4"	0	25 / 0.99	50 / 0.98	75 / 0.96	100 / 0.95	100 / 0.93	100 / 0.92	100 / 0.91	NR	NR
	3/8"	7/8"	0	25 / 1.00	50 / 0.99	75 / 0.99	77 / 0.98	67 / 0.97	57 / 0.97	46 / 0.96	36 / 0.96	26 / 0.95
	1/2"	7/8"	0	25 / 1.00	50 / 0.99	75 / 0.99	100 / 0.98	100 / 0.97	100 / 0.97	100 / 0.96	100 / 0.96	99 / 0.95
5 Ton	3/8"	3/4"	0	25 / 0.99	50 / 0.97	75 / 0.94	61 / 0.92	46 / 0.90	NR	NR	NR	NR
	1/2"	3/4"	0	25 / 0.99	50 / 0.97	75 / 0.94	100 / 0.92	100 / 0.90	NR	NR	NR	NR
	3/8"	7/8"	0	25 / 1.00	50 / 0.99	75 / 0.98	61 / 0.97	46 / 0.96	32 / 0.95	18 / 0.94	NR	NR
	1/2"	7/8"	0	25 / 1.00	50 / 0.99	75 / 0.98	100 / 0.97	100 / 0.96	100 / 0.95	97 / 0.94	95 / 0.94	89 / 0.92
	3/8"	1-1/8"	0	25 / 1.01	50 / 1.01	75 / 1.00	61 / 1.00	46 / 0.99	32 / 0.99	18 / 0.99	NR	NR
	1/2"	1-1/8"	0	25 / 1.01	50 / 1.01	75 / 1.00	100 / 1.00	100 / 0.99	100 / 0.99	97 / 0.99	95 / 0.99	92 / 0.99

**NOTES:**

- 1) Do not exceed 200 ft linear line length.
- 2) \*Do not exceed 100 ft vertical separation if outdoor unit is above indoor unit.
- 3) \*\*3/4" suction line should only be used for 1.5 ton systems if outdoor unit is below or at same level as indoor to assure proper oil return.
- 4) Always use the smallest liquid line allowable to minimize refrigerant charge.
- 5) Applications shaded in light gray indicate capacity multipliers between 0.90 and 0.96 which are not recommended, but are allowed.
- 6) Applications shaded in dark gray are not recommended due to excessive liquid or suction pressure drop.



# Condensing Unit Refrigerant Line Size Information

16 SEER Single-Stage Air-Conditioners														
Unit Size	Allowable Liquid Line Size mm [in.]	Allowable Suction Line Size mm [in.]	Apply Long Line Guidelines if Linear Line Length Exceeds Those Shown Below (Meters)	Equivalent Length (Meters)										
				< 8	8-15	16-23	24-30	31-38	39-46	47-53	54-61	62-69	70-76	
				Maximum Vertical Rise (Outdoor Unit Below Indoor Unit) * / Capacity Multiplier										
WA16				8 / 1.00	15 / 0.99	19 / 0.98	13 / 0.98	7 / 0.97	2 / 0.97	NR	NR	NR	NR	NR
5.3 kW [1.5 Ton] <b>**SEE NOTE 3</b>		15.88 [5/8]	N/A	8 / 1.00	15 / 0.99	19 / 0.98	13 / 0.98	7 / 0.97	2 / 0.97	NR	NR	NR	NR	NR
		15.88 [5/8]	58	8 / 1.00	15 / 0.99	23 / 0.98	30 / 0.98	28 / 0.97	27 / 0.97	25 / 0.96	24 / 0.96	22 / 0.95	21 / 0.94	21 / 0.94
		15.88 [5/8]	39	8 / 1.00	15 / 0.99	23 / 0.98	30 / 0.98	30 / 0.97	30 / 0.97	30 / 0.96	30 / 0.96	30 / 0.95	30 / 0.94	30 / 0.94
		19.05 [3/4]**	N/A	8 / 1.00	15 / 1.00	19 / 0.99	13 / 0.99	7 / 0.99	2 / 0.99	NR	NR	NR	NR	NR
7.0 kW [2 Ton]		19.05 [3/4]**	58	8 / 1.00	15 / 1.00	23 / 0.99	30 / 0.99	28 / 0.99	27 / 0.99	25 / 0.99	24 / 0.98	22 / 0.98	21 / 0.98	21 / 0.98
		19.05 [3/4]**	39	8 / 1.00	15 / 1.00	23 / 0.99	30 / 0.99	30 / 0.99	30 / 0.99	30 / 0.99	30 / 0.98	30 / 0.98	30 / 0.98	30 / 0.98
		15.88 [5/8]	N/A	8 / 0.99	15 / 0.98	6 / 0.97	NR	NR	NR	NR	NR	NR	NR	NR
		15.88 [5/8]	55	8 / 0.99	15 / 0.98	23 / 0.97	27 / 0.96	23 / 0.95	21 / 0.94	19 / 0.93	16 / 0.92	14 / 0.91	11 / 0.90	11 / 0.90
8.8 kW [2.5 Ton]		15.88 [5/8]	37	8 / 0.99	15 / 0.98	23 / 0.97	30 / 0.96	30 / 0.95	30 / 0.94	30 / 0.93	29 / 0.92	28 / 0.91	27 / 0.90	27 / 0.90
		19.05 [3/4]	N/A	8 / 1.00	15 / 1.00	6 / 0.99	NR	NR	NR	NR	NR	NR	NR	NR
		19.05 [3/4]	55	8 / 1.00	15 / 1.00	23 / 0.99	27 / 0.99	23 / 0.98	21 / 0.98	19 / 0.98	16 / 0.97	14 / 0.97	11 / 0.96	11 / 0.96
		19.05 [3/4]	37	8 / 1.00	15 / 1.00	23 / 0.99	30 / 0.99	30 / 0.98	30 / 0.98	30 / 0.98	29 / 0.97	28 / 0.97	27 / 0.96	27 / 0.96
10.6 kW [3 Ton]		15.88 [5/8]	34	8 / 0.99	15 / 0.98	23 / 0.96	21 / 0.94	18 / 0.93	15 / 0.91	NR	NR	NR	NR	NR
		15.88 [5/8]	23	8 / 0.99	15 / 0.98	23 / 0.96	30 / 0.94	30 / 0.93	29 / 0.91	NR	NR	NR	NR	NR
		19.05 [3/4]	34	8 / 1.00	15 / 0.99	23 / 0.99	21 / 0.98	18 / 0.98	15 / 0.97	11 / 0.96	8 / 0.96	4 / 0.95	NR	NR
		19.05 [3/4]	23	8 / 1.00	15 / 0.99	23 / 0.99	30 / 0.98	30 / 0.98	29 / 0.97	27 / 0.96	26 / 0.96	25 / 0.95	24 / 0.95	24 / 0.95
10.6 kW [3 Ton]		15.88 [5/8]	22	8 / 0.99	15 / 0.97	20 / 0.94	15 / 0.92	10 / 0.90	NR	NR	NR	NR	NR	NR
		15.88 [5/8]	15	8 / 0.99	15 / 0.97	23 / 0.94	29 / 0.92	27 / 0.90	NR	NR	NR	NR	NR	NR
		19.05 [3/4]	22	8 / 1.00	15 / 0.99	20 / 0.98	15 / 0.98	10 / 0.97	5 / 0.96	NR	NR	NR	NR	NR
		19.05 [3/4]	15	8 / 1.00	15 / 0.99	23 / 0.98	29 / 0.98	27 / 0.97	26 / 0.96	24 / 0.95	22 / 0.94	20 / 0.93	19 / 0.93	19 / 0.93
10.6 kW [3 Ton]		19.05 [3/4]	7	8 / 1.00	15 / 0.99	23 / 0.98	30 / 0.98	30 / 0.97	30 / 0.96	30 / 0.95	30 / 0.94	30 / 0.93	30 / 0.93	30 / 0.93
		22.23 [7/8]	22	8 / 1.00	15 / 1.00	20 / 1.00	15 / 0.99	10 / 0.99	5 / 0.99	NR	NR	NR	NR	NR
		22.23 [7/8]	15	8 / 1.00	15 / 1.00	23 / 1.00	29 / 0.99	27 / 0.99	26 / 0.99	24 / 0.98	22 / 0.98	20 / 0.98	19 / 0.97	19 / 0.97
		22.23 [7/8]	7	8 / 1.00	15 / 1.00	23 / 1.00	30 / 0.99	30 / 0.99	30 / 0.99	30 / 0.98	30 / 0.98	30 / 0.98	30 / 0.97	30 / 0.97

**NOTES:**

- 1) Do not exceed 61 meters linear line length.
- 2) \*Do not exceed 30 meters vertical separation if outdoor unit is above indoor unit.
- 3) \*\*19.05 mm [3/4 in.] vapor line should only be used for 1.5 ton systems if outdoor unit is below or at same level as indoor to assure proper oil return.
- 4) Always use the smallest liquid line allowable to minimize refrigerant charge.
- 5) Applications shaded in light gray indicate capacity multipliers between 0.90 and 0.96 which are not recommended, but are allowed.
- 6) Applications shaded in dark gray are not recommended due to excessive liquid or suction pressure drop.

## Condensing Unit Refrigerant Line Size Information (con't.)

16 SEER Single-Stage Air-Conditioners													
Unit Size	Allowable Liquid Line Size mm [in.]	Allowable Suction Line Size mm [in.]	Apply Long Line Guidelines if Linear Line Length Exceeds Those Shown Below (Meters)	Equivalent Length (Meters)							70-76		
				< 8	8-15	16-23	24-30	31-38	39-46	47-53		54-61	62-69
				Maximum Vertical Rise (Outdoor Unit Below Indoor Unit) * / Capacity Multiplier									
14.1 kW [4 Ton]	9.53 [3/8]	19.05 [3/4]	0	8 / 0.99	15 / 0.98	23 / 0.96	24 / 0.95	20 / 0.93	17 / 0.92	14 / 0.91	NR	NR	
	12.7 [1/2]	19.05 [3/4]	0	8 / 0.99	15 / 0.98	23 / 0.96	30 / 0.95	30 / 0.93	30 / 0.92	30 / 0.91	NR	NR	
	9.53 [3/8]	22.23 [7/8]	0	8 / 1.00	15 / 0.99	23 / 0.99	24 / 0.98	20 / 0.97	17 / 0.97	14 / 0.96	11 / 0.96	8 / 0.95	5 / 0.95
17.6 kW [5 Ton]	12.7 [1/2]	22.23 [7/8]	0	8 / 1.00	15 / 0.99	23 / 0.99	30 / 0.98	30 / 0.97	30 / 0.97	30 / 0.96	30 / 0.95	30 / 0.95	
	9.53 [3/8]	19.05 [3/4]	0	8 / 0.99	15 / 0.97	23 / 0.94	19 / 0.92	14 / 0.90	NR	NR	NR	NR	
	12.7 [1/2]	19.05 [3/4]	0	8 / 0.99	15 / 0.97	23 / 0.94	30 / 0.92	30 / 0.90	NR	NR	NR	NR	
	9.53 [3/8]	22.23 [7/8]	0	8 / 1.00	15 / 0.99	23 / 0.98	19 / 0.97	14 / 0.96	10 / 0.95	5 / 0.94	NR	NR	
	12.7 [1/2]	22.23 [7/8]	0	8 / 1.00	15 / 0.99	23 / 0.98	30 / 0.97	30 / 0.96	30 / 0.95	30 / 0.94	29 / 0.94	28 / 0.93	27 / 0.92
	9.53 [3/8]	28.58 [1-1/8]	0	8 / 1.01	15 / 1.01	23 / 1.00	19 / 1.00	14 / 0.99	10 / 0.99	5 / 0.99	NR	NR	
	12.7 [1/2]	28.58 [1-1/8]	0	8 / 1.01	15 / 1.01	23 / 1.00	30 / 1.00	30 / 0.99	30 / 0.99	30 / 0.99	29 / 0.99	28 / 0.99	27 / 0.98

**NOTES:**

- 1) Do not exceed 61 meters linear line length.
- 2) \*Do not exceed 30 meters vertical separation if outdoor unit is above indoor unit.
- 3) \*19.05 mm [3/4 in.] vapor line should only be used for 1.5 ton systems if outdoor unit is below or at same level as indoor to assure proper oil return.
- 4) Always use the smallest liquid line allowable to minimize refrigerant charge.
- 5) Applications shaded in light gray indicate capacity multipliers between 0.90 and 0.96 which are not recommended, but are allowed.
- 6) Applications shaded in dark gray are not recommended due to excessive liquid or suction pressure drop.

## Performance Data @ AHRI Standard Conditions—Cooling

Note: Ratings contained in this document are subject to change. For up-to-date and expanded ratings, please visit the AHRI web site ([www.ahridirectory.org](http://www.ahridirectory.org)).

Coil-Only Ratings							
Outdoor Unit	Indoor Coil	Total Capacity BTU/H [kW]	Net Sensible BTU/H [kW]	Net Latent BTU/H [kW]	SEER	EER	Indoor CFM [L/s]
WA1618AJ1	RCFL-H*2417+RXMD-C04	17800 [5.2]	12900 [3.8]	4900 [1.4]	12.20	14.00	600 [283.2]
	TCF2414STA+RXMD-C04	18000 [5.3]	13100 [3.8]	4900 [1.4]	12.20	14.50	600 [283.2]
	TCF2417STA+RXMD-C04	18000 [5.3]	13100 [3.8]	4900 [1.4]	12.20	14.50	600 [283.2]
WA1624AJ1	RCFL-H*2617+RXMD-C04	23400 [6.9]	17000 [5.0]	6400 [1.9]	12.20	14.00	800 [377.6]
WA1630AJ1	RCF3617STA+RXMD-C04	27800 [8.1]	20200 [5.9]	7600 [2.2]	12.20	14.00	975 [460.1]
WA1636AJ1	RCF3621STA+RXMD-C04	35400 [10.4]	25700 [7.5]	9700 [2.8]	12.20	14.00	1125 [530.9]
WA1648AJ1	RCFL-H*4821+RXMD-C04	46000 [13.5]	33400 [9.8]	12600 [3.7]	11.70	14.00	1600 [755.1]
	TCF4821MTA+RXMD-C04	47500 [13.9]	34500 [10.1]	13000 [3.8]	11.70	14.00	1550 [731.5]
	TCF4821STA+RXMD-C04	46000 [13.5]	33400 [9.8]	12600 [3.7]	11.70	14.00	1375 [648.9]
	TCF4824HTA+RXMD-C04	48000 [14.1]	34800 [10.2]	13200 [3.9]	11.70	14.00	1600 [755.1]
	TCF4824STA+RXMD-C04	46000 [13.5]	33400 [9.8]	12600 [3.7]	11.70	14.00	1375 [648.9]
	TCF6021STA+RXMD-C04	48000 [14.1]	34800 [10.2]	13200 [3.9]	11.70	14.00	1600 [755.1]
WA1660AJ1	RCFL-H*6024+RXMD-C04	58000 [17.0]	42100 [12.3]	15900 [4.7]	11.70	14.00	1600 [755.1]
	TCF6024HTA+RXMD-C04	58000 [17.0]	42100 [12.3]	15900 [4.7]	11.70	14.00	1600 [755.1]
	TCF6024STA+RXMD-C04	58000 [17.0]	42100 [12.3]	15900 [4.7]	11.70	14.00	1600 [755.1]

[ ] Designates Metric Conversions

## Performance Data @ AHRI Standard Conditions—Cooling (con't.)

Note: Ratings contained in this document are subject to change. For up-to-date and expanded ratings, please visit the AHRI web site ([www.ahridirectory.org](http://www.ahridirectory.org)).

Single-Stage 80% AFUE Gas Furnace Ratings								
Outdoor Unit	Furnace	Indoor Coil	Total Capacity BTU/H [kW]	Net Sensible BTU/H [kW]	Net Latent BTU/H [kW]	SEER	EER	Indoor CFM [L/s]
WA1618AJ1	W801TA050314M	TCF2414STA	18000 [5.3]	13100 [3.8]	4900 [1.4]	13.00	16.00	600 [283.2]
	W801TA050314M	TCF2417HTA	18000 [5.3]	13100 [3.8]	4900 [1.4]	13.00	16.00	625 [295.0]
	W801TA050314M	TCF2417MTA	18000 [5.3]	13100 [3.8]	4900 [1.4]	13.00	16.00	625 [295.0]
	W801TA050314M	TCF2417STA	18000 [5.3]	13100 [3.8]	4900 [1.4]	13.00	16.00	625 [295.0]
	W801TA075317Z	TCF2417HTA	18000 [5.3]	13100 [3.8]	4900 [1.4]	13.00	16.00	650 [306.8]
	W801TA075317Z	TCF2417MTA	18000 [5.3]	13100 [3.8]	4900 [1.4]	13.00	16.00	650 [306.8]
	W801TA075317Z	TCF2417STA	18000 [5.3]	13100 [3.8]	4900 [1.4]	13.00	16.00	650 [306.8]
	W801TA075317Z	TCF2421HTA	18000 [5.3]	13100 [3.8]	4900 [1.4]	13.00	16.00	650 [306.8]
WA1624AJ1	W801TA050314M	TCF2414STA	24000 [7.0]	17400 [5.1]	6600 [1.9]	13.00	15.50	800 [377.6]
	W801TA050314M	TCF2417HTA	23800 [7.0]	17300 [5.1]	6500 [1.9]	13.00	15.50	850 [401.2]
	W801TA050314M	TCF2417MTA	23800 [7.0]	17300 [5.1]	6500 [1.9]	13.00	15.50	850 [401.2]
	W801TA050314M	TCF2417STA	24000 [7.0]	17400 [5.1]	6600 [1.9]	13.00	16.00	850 [401.2]
	W801TA075317Z	TCF2417HTA	23800 [7.0]	17300 [5.1]	6500 [1.9]	13.00	15.50	875 [413.0]
	W801TA075317Z	TCF2417MTA	23800 [7.0]	17300 [5.1]	6500 [1.9]	13.00	15.50	875 [413.0]
	W801TA075317Z	TCF2417STA	23000 [6.7]	16700 [4.9]	6300 [1.8]	13.00	16.00	650 [306.8]
	W801TA075317Z	TCF2421HTA	23800 [7.0]	17300 [5.1]	6500 [1.9]	13.00	15.50	875 [413.0]
WA1630AJ1	W801TA050314M	TCF3617STA	27800 [8.1]	20200 [5.9]	7600 [2.2]	12.50	15.00	850 [401.2]
	W801TA075317Z	TCF3617STA	28000 [8.2]	20300 [5.9]	7700 [2.3]	12.50	15.00	875 [413.0]
	W801TA075317Z	TCF3621MTA	29600 [8.7]	21500 [6.3]	8100 [2.4]	13.00	16.00	875 [413.0]
	W801TA075317Z	TCF3621STA	28000 [8.2]	20300 [5.9]	7700 [2.3]	12.50	15.00	875 [413.0]
	W801TA075417M	TCF3617STA	28600 [8.4]	20800 [6.1]	7800 [2.3]	12.50	15.00	1025 [483.7]
	W801TA075417M	TCF3621HTA	30000 [8.8]	21800 [6.4]	8200 [2.4]	13.00	16.00	1050 [495.5]
	W801TA075417M	TCF3621MTA	30000 [8.8]	21800 [6.4]	8200 [2.4]	13.00	16.00	1025 [483.7]
	W801TA075417M	TCF3621STA	28600 [8.4]	20800 [6.1]	7800 [2.3]	12.50	15.00	1025 [483.7]
	W801TA075421M	TCF3621HTA	30000 [8.8]	21800 [6.4]	8200 [2.4]	13.00	16.00	1050 [495.5]
	W801TA075421M	TCF3621MTA	30000 [8.8]	21800 [6.4]	8200 [2.4]	13.00	16.00	1025 [483.7]
	W801TA075421M	TCF3621STA	28400 [8.3]	20600 [6.0]	7800 [2.3]	12.50	15.00	1000 [471.9]
	W801TA075421M	TCF3624HTA	30000 [8.8]	21800 [6.4]	8200 [2.4]	13.00	16.00	1050 [495.5]
	W801TA075421M	TCF3624MTA	30000 [8.8]	21800 [6.4]	8200 [2.4]	13.00	16.00	1025 [483.7]
	W801TA075521Z	TCF3621MTA	30000 [8.8]	21800 [6.4]	8200 [2.4]	13.00	16.00	975 [460.1]
	W801TA075521Z	TCF3621STA	28400 [8.3]	20600 [6.0]	7800 [2.3]	12.50	15.00	975 [460.1]
	W801TA075521Z	TCF3624HTA	30000 [8.8]	21800 [6.4]	8200 [2.4]	13.00	16.00	1025 [483.7]
	W801TA075521Z	TCF3624MTA	30000 [8.8]	21800 [6.4]	8200 [2.4]	13.00	16.00	975 [460.1]
	W801TA100521M	TCF3621HTA	30000 [8.8]	21800 [6.4]	8200 [2.4]	13.00	16.00	1075 [507.3]
	W801TA100521M	TCF3621MTA	30000 [8.8]	21800 [6.4]	8200 [2.4]	13.00	16.00	1050 [495.5]
	W801TA100521M	TCF3621STA	28400 [8.3]	20600 [6.0]	7800 [2.3]	12.50	15.00	1000 [471.9]
	W801TA100521M	TCF3624HTA	30000 [8.8]	21800 [6.4]	8200 [2.4]	13.00	16.00	1075 [507.3]
	W801TA100521M	TCF3624MTA	30000 [8.8]	21800 [6.4]	8200 [2.4]	13.00	16.00	1050 [495.5]
	W801TA100521Z	TCF3621MTA	30000 [8.8]	21800 [6.4]	8200 [2.4]	13.00	16.00	975 [460.1]
	W801TA100521Z	TCF3621STA	28600 [8.4]	20800 [6.1]	7800 [2.3]	12.50	15.00	975 [460.1]
W801TA100521Z	TCF3624HTA	30000 [8.8]	21800 [6.4]	8200 [2.4]	13.00	16.00	1025 [483.7]	
W801TA100521Z	TCF3624MTA	30000 [8.8]	21800 [6.4]	8200 [2.4]	13.00	16.00	975 [460.1]	
W801TA125524Z	TCF3624HTA	30000 [8.8]	21800 [6.4]	8200 [2.4]	13.00	16.00	950 [448.4]	
W801TA125524Z	TCF3624MTA	30000 [8.8]	21800 [6.4]	8200 [2.4]	13.00	16.00	925 [436.6]	

[ ] Designates Metric Conversions

## Performance Data @ AHRI Standard Conditions—Cooling (con't.)

Note: Ratings contained in this document are subject to change. For up-to-date and expanded ratings, please visit the AHRI web site ([www.ahridirectory.org](http://www.ahridirectory.org)).

Single-Stage 80% AFUE Gas Furnace Ratings								
Outdoor Unit	Furnace	Indoor Coil	Total Capacity BTU/H [kW]	Net Sensible BTU/H [kW]	Net Latent BTU/H [kW]	SEER	EER	Indoor CFM [L/s]
WA1636AJ1	W801TA075317Z	TCF3621MTA	36000 [10.6]	26100 [7.6]	9900 [2.9]	12.50	15.00	1075 [507.3]
	W801TA075417M	TCF3621HTA	36000 [10.6]	26100 [7.6]	9900 [2.9]	13.00	16.00	1050 [495.5]
	W801TA075417M	TCF3621MTA	36000 [10.6]	26100 [7.6]	9900 [2.9]	12.50	15.50	1175 [554.5]
	W801TA075421M	TCF3621HTA	36000 [10.6]	26100 [7.6]	9900 [2.9]	13.00	16.00	1050 [495.5]
	W801TA075421M	TCF3621MTA	36000 [10.6]	26100 [7.6]	9900 [2.9]	12.50	15.50	1200 [566.3]
	W801TA075421M	TCF3624HTA	36000 [10.6]	26100 [7.6]	9900 [2.9]	13.00	16.00	1250 [589.9]
	W801TA075421M	TCF3624MTA	36000 [10.6]	26100 [7.6]	9900 [2.9]	12.50	15.50	1200 [566.3]
	W801TA075521Z	TCF3621MTA	36000 [10.6]	26100 [7.6]	9900 [2.9]	12.50	15.50	975 [460.1]
	W801TA075521Z	TCF3624HTA	36000 [10.6]	26100 [7.6]	9900 [2.9]	13.00	16.00	1250 [589.9]
	W801TA075521Z	TCF3624MTA	36000 [10.6]	26100 [7.6]	9900 [2.9]	12.50	15.50	975 [460.1]
	W801TA100521M	TCF3621HTA	36000 [10.6]	26100 [7.6]	9900 [2.9]	13.00	16.00	1075 [507.3]
	W801TA100521M	TCF3621MTA	36000 [10.6]	26100 [7.6]	9900 [2.9]	12.50	15.50	1050 [495.5]
	W801TA100521M	TCF3624HTA	36000 [10.6]	26100 [7.6]	9900 [2.9]	13.00	16.00	1100 [519.1]
	W801TA100521M	TCF3624MTA	36000 [10.6]	26100 [7.6]	9900 [2.9]	12.50	15.50	1050 [495.5]
	W801TA100521Z	TCF3621MTA	36000 [10.6]	26100 [7.6]	9900 [2.9]	12.50	15.50	1225 [578.1]
	W801TA100521Z	TCF3624HTA	36000 [10.6]	26100 [7.6]	9900 [2.9]	13.00	16.00	1250 [589.9]
	W801TA100521Z	TCF3624MTA	36000 [10.6]	26100 [7.6]	9900 [2.9]	12.50	15.50	1225 [578.1]
	W801TA125524M	TCF3624HTA	36000 [10.6]	26100 [7.6]	9900 [2.9]	13.00	16.00	1200 [566.3]
	W801TA125524M	TCF3624MTA	36000 [10.6]	26100 [7.6]	9900 [2.9]	12.50	15.50	1150 [542.7]
	W801TA125524Z	TCF3624HTA	36000 [10.6]	26100 [7.6]	9900 [2.9]	13.00	16.00	1125 [530.9]
W801TA125524Z	TCF3624MTA	36000 [10.6]	26100 [7.6]	9900 [2.9]	12.50	15.50	1100 [519.1]	
WA1648AJ1	W801TA050317M	TCF6021STA	47000 [13.8]	34100 [10.0]	12900 [3.8]	12.50	15.00	1350 [637.1]
	W801TA070317M	TCF4821MTA	47000 [13.8]	34100 [10.0]	12900 [3.8]	12.50	15.00	1375 [648.9]
	W801TA070317M	TCF4821STA	46500 [13.6]	33700 [9.9]	12800 [3.8]	12.50	15.00	1375 [648.9]
	W801TA070317M	TCF6021STA	47500 [13.9]	34500 [10.1]	13000 [3.8]	12.50	15.00	1400 [660.7]
	W801TA075317Z	TCF4821MTA	47000 [13.8]	34100 [10.0]	12900 [3.8]	12.50	15.00	1350 [637.1]
	W801TA075317Z	TCF4821STA	46000 [13.5]	33400 [9.8]	12600 [3.7]	12.50	15.00	1250 [589.9]
	W801TA075417M	TCF4821MTA	47000 [13.8]	34100 [10.0]	12900 [3.8]	13.00	16.00	1300 [613.5]
	W801TA075417M	TCF4821STA	46500 [13.6]	33700 [9.9]	12800 [3.8]	13.00	15.50	1275 [601.7]
	W801TA075417M	TCF6021STA	47500 [13.9]	34500 [10.1]	13000 [3.8]	13.00	16.00	1300 [613.5]
	W801TA075421M	TCF4821MTA	48000 [14.1]	34800 [10.2]	13200 [3.9]	13.00	16.00	1425 [672.5]
	W801TA075421M	TCF4821STA	47000 [13.8]	34100 [10.0]	12900 [3.8]	13.00	15.50	1400 [660.7]
	W801TA075421M	TCF4824HTA	48000 [14.1]	34800 [10.2]	13200 [3.9]	13.00	16.00	1425 [672.5]
	W801TA075421M	TCF4824STA	47000 [13.8]	34100 [10.0]	12900 [3.8]	13.00	15.50	1400 [660.7]
	W801TA075421M	TCF6021STA	48000 [14.1]	34800 [10.2]	13200 [3.9]	13.00	16.00	1425 [672.5]
	W801TA075521Z	TCF4821MTA	47500 [13.9]	34500 [10.1]	13000 [3.8]	13.00	15.50	1425 [672.5]
	W801TA075521Z	TCF4821STA	46500 [13.6]	33700 [9.9]	12800 [3.8]	12.50	15.00	1400 [660.7]
	W801TA075521Z	TCF4824HTA	48000 [14.1]	34800 [10.2]	13200 [3.9]	13.00	16.00	1450 [684.3]
	W801TA075521Z	TCF4824STA	46500 [13.6]	33700 [9.9]	12800 [3.8]	12.50	15.00	1400 [660.7]
	W801TA075521Z	TCF6021STA	48000 [14.1]	34800 [10.2]	13200 [3.9]	13.00	15.50	1450 [684.3]
	W801TA100521M	TCF4821MTA	48000 [14.1]	34800 [10.2]	13200 [3.9]	13.00	16.00	1400 [660.7]
	W801TA100521M	TCF4821STA	46500 [13.6]	33700 [9.9]	12800 [3.8]	13.00	16.00	1300 [613.5]
	W801TA100521M	TCF4824HTA	48000 [14.1]	34800 [10.2]	13200 [3.9]	13.00	16.00	1650 [778.7]
	W801TA100521M	TCF4824STA	46500 [13.6]	33700 [9.9]	12800 [3.8]	13.00	16.00	1300 [613.5]
	W801TA100521M	TCF6021STA	48000 [14.1]	34800 [10.2]	13200 [3.9]	13.00	16.00	1675 [790.5]
W801TA100521Z	TCF4821MTA	48000 [14.1]	34800 [10.2]	13200 [3.9]	13.00	15.50	1450 [684.3]	

[ ] Designates Metric Conversions

## Performance Data @ AHRI Standard Conditions—Cooling (con't.)

Note: Ratings contained in this document are subject to change. For up-to-date and expanded ratings, please visit the AHRI web site ([www.ahridirectory.org](http://www.ahridirectory.org)).

Single-Stage 80% AFUE Gas Furnace Ratings								
Outdoor Unit	Furnace	Indoor Coil	Total Capacity BTU/H [kW]	Net Sensible BTU/H [kW]	Net Latent BTU/H [kW]	SEER	EER	Indoor CFM [L/s]
WA1648AJ1	W801TA100521Z	TCF4821STA	47000 [13.8]	34100 [10.0]	12900 [3.8]	13.00	15.50	1400 [660.7]
	W801TA100521Z	TCF4824HTA	48000 [14.1]	34800 [10.2]	13200 [3.9]	13.00	16.00	1450 [684.3]
	W801TA100521Z	TCF4824STA	47000 [13.8]	34100 [10.0]	12900 [3.8]	13.00	15.50	1400 [660.7]
	W801TA100521Z	TCF6021STA	48000 [14.1]	34800 [10.2]	13200 [3.9]	13.00	16.00	1450 [684.3]
	W801TA125524M	TCF4824HTA	48000 [14.1]	34800 [10.2]	13200 [3.9]	13.00	16.00	1650 [778.7]
	W801TA125524M	TCF4824STA	46500 [13.6]	33700 [9.9]	12800 [3.8]	13.00	16.00	1325 [625.3]
	W801TA125524Z	TCF4824HTA	48000 [14.1]	34800 [10.2]	13200 [3.9]	13.00	16.00	1375 [648.9]
	W801TA125524Z	TCF4824STA	46500 [13.6]	33700 [9.9]	12800 [3.8]	13.00	15.50	1325 [625.3]

[ ] Designates Metric Conversions

## Performance Data @ AHRI Standard Conditions—Cooling (con't.)

Note: Ratings contained in this document are subject to change. For up-to-date and expanded ratings, please visit the AHRI web site ([www.ahridirectory.org](http://www.ahridirectory.org)).

95% AFUE Single-Stage Constant Torque Multipoise Gas Furnace Ratings								
Outdoor Unit	Furnace	Indoor Coil	Total Capacity BTU/H [kW]	Net Sensible BTU/H [kW]	Net Latent BTU/H [kW]	SEER	EER	Indoor CFM [L/s]
WA1618AJ1	W95TC0401317M	TCF2417HTA	18000 [5.3]	13100 [3.8]	4900 [1.4]	13.00	15.50	650 [306.8]
	W95TC0401317M	TCF2417MTA	18000 [5.3]	13100 [3.8]	4900 [1.4]	13.00	15.50	650 [306.8]
	W95TC0401317M	TCF2417STA	18000 [5.3]	13100 [3.8]	4900 [1.4]	13.00	16.00	675 [318.6]
	W95TC0401317M	TCF2421HTA	18000 [5.3]	13100 [3.8]	4900 [1.4]	13.00	15.50	675 [318.6]
	W95TC0401317M	TCF2421MTA	18000 [5.3]	13100 [3.8]	4900 [1.4]	13.00	15.50	650 [306.8]
	W95TC0601317M	TCF2417HTA	18000 [5.3]	13100 [3.8]	4900 [1.4]	13.00	15.50	600 [283.2]
	W95TC0601317M	TCF2417MTA	18000 [5.3]	13100 [3.8]	4900 [1.4]	13.00	15.50	600 [283.2]
	W95TC0601317M	TCF2417STA	18000 [5.3]	13100 [3.8]	4900 [1.4]	13.00	15.50	600 [283.2]
	W95TC0601317M	TCF2421HTA	18000 [5.3]	13100 [3.8]	4900 [1.4]	13.00	15.50	600 [283.2]
	W95TC0601317M	TCF2421MTA	18000 [5.3]	13100 [3.8]	4900 [1.4]	13.00	15.50	600 [283.2]
WA1624AJ1	W95TC0401317M	TCF2417HTA	23800 [7.0]	17300 [5.1]	6500 [1.9]	12.50	15.00	875 [413.0]
	W95TC0401317M	TCF2417MTA	23800 [7.0]	17300 [5.1]	6500 [1.9]	12.50	15.00	875 [413.0]
	W95TC0401317M	TCF2417STA	23600 [6.9]	17100 [5.0]	6500 [1.9]	13.00	16.00	750 [354.0]
	W95TC0401317M	TCF2421HTA	23200 [6.8]	16800 [4.9]	6400 [1.9]	13.00	15.50	750 [354.0]
	W95TC0401317M	TCF2421MTA	23800 [7.0]	17300 [5.1]	6500 [1.9]	12.50	15.00	875 [413.0]
	W95TC0601317M	TCF2417HTA	23600 [6.9]	17100 [5.0]	6500 [1.9]	12.50	15.00	850 [401.2]
	W95TC0601317M	TCF2417MTA	23600 [6.9]	17100 [5.0]	6500 [1.9]	12.50	15.00	850 [401.2]
	W95TC0601317M	TCF2417STA	23800 [7.0]	17300 [5.1]	6500 [1.9]	13.00	15.50	850 [401.2]
	W95TC0601317M	TCF2421HTA	23600 [6.9]	17100 [5.0]	6500 [1.9]	12.50	15.00	850 [401.2]
	W95TC0601317M	TCF2421MTA	23600 [6.9]	17100 [5.0]	6500 [1.9]	12.50	15.00	850 [401.2]
	W95TC0701317M	TCF2417HTA	23600 [6.9]	17100 [5.0]	6500 [1.9]	13.00	15.50	850 [401.2]
	W95TC0701317M	TCF2417MTA	23600 [6.9]	17100 [5.0]	6500 [1.9]	13.00	15.50	850 [401.2]
	W95TC0701317M	TCF2417STA	23800 [7.0]	17300 [5.1]	6500 [1.9]	13.00	15.50	850 [401.2]
	W95TC0701317M	TCF2421HTA	23600 [6.9]	17100 [5.0]	6500 [1.9]	12.50	15.00	850 [401.2]
W95TC0701317M	TCF2421MTA	23600 [6.9]	17100 [5.0]	6500 [1.9]	13.00	15.50	850 [401.2]	
WA1630AJ1	W95TC0401317M	TCF3621HTA	30000 [8.8]	21800 [6.4]	8200 [2.4]	13.00	15.50	1000 [471.9]
	W95TC0401317M	TCF3621MTA	30000 [8.8]	21800 [6.4]	8200 [2.4]	13.00	15.50	975 [460.1]
	W95TC0601317M	TCF3621HTA	30000 [8.8]	21800 [6.4]	8200 [2.4]	13.00	15.50	950 [448.4]
	W95TC0601317M	TCF3621MTA	29800 [8.7]	21600 [6.3]	8200 [2.4]	13.00	15.50	925 [436.6]
	W95TC0701317M	TCF3621HTA	30000 [8.8]	21800 [6.4]	8200 [2.4]	13.00	16.00	975 [460.1]
	W95TC0701317M	TCF3621MTA	30000 [8.8]	21800 [6.4]	8200 [2.4]	13.00	15.50	950 [448.4]
WA1636AJ1	W95TC0401317M	TCF3621HTA	36000 [10.6]	26100 [7.6]	9900 [2.9]	12.50	15.50	1100 [519.1]
	W95TC0401317M	TCF3621MTA	36000 [10.6]	26100 [7.6]	9900 [2.9]	12.50	15.00	1075 [507.3]
	W95TC0601317M	TCF3621HTA	36000 [10.6]	26100 [7.6]	9900 [2.9]	12.50	15.00	1075 [507.3]
	W95TC0701317M	TCF3621HTA	36000 [10.6]	26100 [7.6]	9900 [2.9]	12.50	15.50	975 [460.1]
	W95TC0701317M	TCF3621MTA	36000 [10.6]	26100 [7.6]	9900 [2.9]	12.50	15.00	1075 [507.3]
	W95TC0851521M	TCF3621HTA	36000 [10.6]	26100 [7.6]	9900 [2.9]	12.50	15.50	1250 [589.9]
	W95TC0851521M	TCF3621MTA	36000 [10.6]	26100 [7.6]	9900 [2.9]	12.50	15.00	1225 [578.1]
	W95TC0851521M	TCF3624HTA	36000 [10.6]	26100 [7.6]	9900 [2.9]	12.50	15.50	1275 [601.7]
W95TC0851521M	TCF3624MTA	36000 [10.6]	26100 [7.6]	9900 [2.9]	12.50	15.00	1225 [578.1]	

[ ] Designates Metric Conversions

## Performance Data @ AHRI Standard Conditions—Cooling (con't.)

Note: Ratings contained in this document are subject to change. For up-to-date and expanded ratings, please visit the AHRI web site ([www.ahridirectory.org](http://www.ahridirectory.org)).

95% AFUE Single-Stage Constant Torque Multipoise Gas Furnace Ratings								
Outdoor Unit	Furnace	Indoor Coil	Total Capacity BTU/H [kW]	Net Sensible BTU/H [kW]	Net Latent BTU/H [kW]	SEER	EER	Indoor CFM [L/s]
WA1648AJ1	W95TC0601317M	TCF4821MTA	46500 [13.6]	33700 [9.9]	12800 [3.8]	12.50	15.00	1250 [589.9]
	W95TC0601317M	TCF4821STA	46000 [13.5]	33400 [9.8]	12600 [3.7]	12.50	15.00	1250 [589.9]
	W95TC0601317M	TCF6021STA	46500 [13.6]	33700 [9.9]	12800 [3.8]	12.50	15.00	1275 [601.7]
	W95TC0701317M	TCF4821MTA	46500 [13.6]	33700 [9.9]	12800 [3.8]	12.50	15.00	1250 [589.9]
	W95TC0701317M	TCF4821STA	46000 [13.5]	33400 [9.8]	12600 [3.7]	12.50	15.00	1250 [589.9]
	W95TC0701317M	TCF6021STA	47000 [13.8]	34100 [10.0]	12900 [3.8]	12.50	15.00	1275 [601.7]
	W95TC0851521M	TCF4821MTA	48000 [14.1]	34800 [10.2]	13200 [3.9]	12.50	15.00	1525 [719.7]
	W95TC0851521M	TCF4824HTA	48000 [14.1]	34800 [10.2]	13200 [3.9]	12.50	15.00	1550 [731.5]
	W95TC0851521M	TCF6021STA	48000 [14.1]	34800 [10.2]	13200 [3.9]	12.50	15.00	1550 [731.5]
	W95TC1001521M	TCF4821MTA	47500 [13.9]	34500 [10.1]	13000 [3.8]	13.00	15.50	1450 [684.3]
	W95TC1001521M	TCF4821STA	46500 [13.6]	33700 [9.9]	12800 [3.8]	12.50	15.00	1400 [660.7]
	W95TC1001521M	TCF4824HTA	48000 [14.1]	34800 [10.2]	13200 [3.9]	12.50	15.00	1575 [743.3]
	W95TC1001521M	TCF4824STA	46500 [13.6]	33700 [9.9]	12800 [3.8]	12.50	15.00	1400 [660.7]
	W95TC1001521M	TCF6021STA	47500 [13.9]	34500 [10.1]	13000 [3.8]	13.00	15.50	1450 [684.3]
	W95TC1151524M	TCF4824HTA	48000 [14.1]	34800 [10.2]	13200 [3.9]	13.00	16.00	1300 [613.5]
W95TC1151524M	TCF4824STA	46500 [13.6]	33700 [9.9]	12800 [3.8]	13.00	15.50	1300 [613.5]	

[ ] Designates Metric Conversions



## Performance Data @ AHRI Standard Conditions—Cooling (con't.)

Note: Ratings contained in this document are subject to change. For up-to-date and expanded ratings, please visit the AHRI web site ([www.ahridirectory.org](http://www.ahridirectory.org)).

Air Handler Ratings							
Outdoor Unit	Air Handler	Total Capacity BTU/H [kW]	Net Sensible BTU/H [kW]	Net Latent BTU/H [kW]	SEER	EER	Indoor CFM [L/s]
WA1618AJ1	RF1T2421MTAN	18000 [5.3]	13100 [3.8]	4900 [1.4]	13.00	16.00	625 [295.0]
	WBHP-17	18000 [5.3]	13100 [3.8]	4900 [1.4]	13.00	16.00	600 [283.2]
	WH1T2417STAN	18000 [5.3]	13100 [3.8]	4900 [1.4]	13.00	16.00	600 [283.2]
WA1624AJ1	RF1T2421MTAN	23600 [6.9]	17100 [5.0]	6500 [1.9]	13.00	15.50	800 [377.6]
	WBHP-17	23400 [6.9]	17000 [5.0]	6400 [1.9]	13.00	15.50	800 [377.6]
	WH1T2417STAN	23800 [7.0]	17300 [5.1]	6500 [1.9]	13.00	16.00	800 [377.6]
WA1630AJ1	RF1T3624MTAN	30000 [8.8]	21800 [6.4]	8200 [2.4]	13.00	15.50	1025 [483.7]
	WBHP-21	28600 [8.4]	20800 [6.1]	7800 [2.3]	13.00	15.50	1000 [471.9]
	WH1T3617STAN	28600 [8.4]	20800 [6.1]	7800 [2.3]	13.00	15.50	1000 [471.9]
	WH1T3621HTAN	30000 [8.8]	21800 [6.4]	8200 [2.4]	13.00	16.00	1000 [471.9]
	WH1T3621MTAN	30000 [8.8]	21800 [6.4]	8200 [2.4]	13.00	16.00	975 [460.1]
WA1636AJ1	RF1T3624MTAN	36000 [10.6]	26100 [7.6]	9900 [2.9]	12.50	15.00	1125 [530.9]
	WBHP-21	36000 [10.6]	26100 [7.6]	9900 [2.9]	12.50	15.00	1200 [566.3]
	WH1T3617STAN	35400 [10.4]	25700 [7.5]	9700 [2.8]	12.50	15.00	1000 [471.9]
	WH1T3621HTAN	36000 [10.6]	26100 [7.6]	9900 [2.9]	13.00	16.00	1200 [566.3]
	WH1T3621MTAN	36000 [10.6]	26100 [7.6]	9900 [2.9]	13.00	15.50	1150 [542.7]
WA1648AJ1	WBHP-24	47000 [13.8]	34100 [10.0]	12900 [3.8]	13.00	16.00	1600 [755.1]
	WH1T4821STAN	47000 [13.8]	34100 [10.0]	12900 [3.8]	13.00	16.00	1400 [660.7]
WA1660AJ1	WBHP-25	56500 [16.6]	41000 [12.0]	15500 [4.5]	11.70	14.00	1800 [849.5]
	WH1T6021STAN	57500 [16.9]	41700 [12.2]	15800 [4.6]	11.70	14.00	1750 [825.9]
	WH1T6024STAN	58500 [17.1]	42500 [12.5]	16000 [4.7]	12.00	14.50	1600 [755.1]

[ ] Designates Metric Conversions

**GENERAL TERMS OF LIMITED WARRANTY\***

WeatherKing will furnish a replacement for any part of this product which fails in normal use and service within the applicable period stated, in accordance with the terms of the limited warranty.

Parts.....Five (5) Years

**\*For complete details of the Limited and Conditional Warranties, including applicable terms and conditions, contact your local contractor or the Manufacturer for a copy of the product warranty certificate.**



---

**Before proceeding with installation, refer to installation instructions packaged with each model, as well as complying with all Federal, State, Provincial, and Local codes, regulations, and practices.**



---

*"In keeping with its policy of continuous progress and product improvement, WeatherKing reserves the right to make changes without notice."*