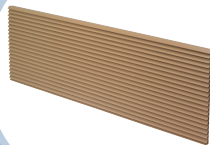


ETAC

ACCESSORY CATALOG

BROADEST LINE OF PTAC & ETAC ENHANCEMENT PRODUCTS



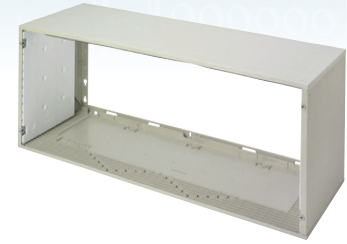
WALL SLEEVES

Polymer Insulated Wall Sleeve



42" x 16" x 14"

Premium polymer wall sleeves are designed to withstand the toughest climate conditions with non-corrosive fiberglass-reinforced polyester compound and factory installed insulation for exceptional strength, superior sound absorption, and minimal heat loss.



Steel Wall Sleeve

42" x 16" x 14"

Heavy duty 18-gauge galvanized steel wall sleeve with a durable powder coat paint finish to provide maximum corrosion protection. Each wall sleeve is insulated to create a solid thermal barrier and increase noise reduction.



Polymer Non Insulated Wall Sleeve



42" x 16" x 14"

Durable polymer wall sleeve are built with fade-resistant color that blends well with most exteriors. They offers outstanding strength, durability, color retention, water integrity and corrosion resistance.



POLYMER WALL SLEEVES					
ORDERING NO.	DESCRIPTION	APPROX SHIP WT	DIMENSIONS (in.)		
			W	H	D
SLEEVE-INSUL-1PK	Insulated Polymer Wall Sleeve	21	42	14 3/4	16
SLEEVE-STEEL-1PK	Steel Wall Sleeve	30	42	14 3/4	16
WALL-SLEEVE-1PK *	Non-Insulated Polymer Wall Sleeve	20	42	14 3/4	16

* * Insulated Wall Sleeves should be considered for superior sound, absorption to reduce heat loss, and to prevent sleeve sweating, a condition that can occur when the outdoor temperature is cold and the indoor temperature is warm and humid.

Metal Extended Depth Wall Sleeve

Heavy duty metal extended depth wall sleeves are available in a variety of sizes for most deep wall applications and difficult installations. All extended wall sleeves are 42-in wide and 16-in high. Choose from 18-in, 24-in, 26-in and 28-in depth sizes. All extended wall sleeves come with factory installation insulations to to minimize heat loss and reduce outdoor noise transmission.



STEEL WALL SLEEVES					
ORDERING NO.	DESCRIPTION	APPROX SHIP WT	DIMENSIONS (in.)		
			W	H	D
SLEEVE-EXT18-1PK	Extended Wall Sleeve For Deep Wall Applications (18 in . Depth)	39	42	18	16
SLEEVE-EXT24-1PK	Extended Wall Sleeve For Deep Wall Applications (24. in . Depth)	56	42	24	16
SLEEVE-EXT26-1PK	Extended Wall Sleeve For Deep Wall Applications (26 in . Depth)	60	42	26	16
SLEEVE-EXT28-1PK	Extended Wall Sleeve For Deep Wall Applications (28 in . Depth)	62	42	28	16

WALL SLEEVE ACCESSORIES



Universal Drain Kit

Condensate drain kit can be used to control condensate water from the packaged terminal unit. The kits can be used for exterior or interior drain systems. The drain kit includes both a short right angle tube and a 6" long straight drain tube to suit any application.



Friedrich Wall Sleeve Adapter

The Friedrich (and ZoneAire) wall sleeve adapter is constructed of metal and is designed to increase the depth of an existing Friedrich T-series or ZoneAire wall sleeve to accommodate industry standard PTAC units.



Wall Sleeve Molding Kit

For a superior look and to hide any construction imperfections, use wall sleeve molding kit to trim the wall sleeve to the wall. The molding kit is a perfect solution and can be used with any 42" x 16" wall sleeve (matches wall sleeve color).



Wall Sleeve Insulation Kit

This easy to field install insulation kit for 42" x 16" x 14" wall sleeves provides sound absorption, reduces heat loss and prevents sleeve sweating.

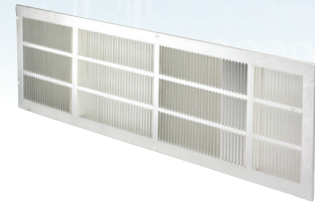
WALL SLEEVES ACCESSORIES					
ORDERING NO.	DESCRIPTION	APPROX SHIP WT	DIMENSIONS (in.)		
			W	H	D
FR-SLEEVE-EXT	Friedrich Wall Sleeve Extension, for Retrofit into Friedrich 11-1/2 in . deep Wall Sleeves (Friedrich T Series)	10	42	3	16
SLEEVE-MOLDING	Wall Sleeve Molding Kit for Trimming 42 in x 16 in Wall Sleeves to the Interior Wall .	2	42	N/A	16
DRAIN-KIT-1PK	Attaches to Wall Sleeve for Controlled Internal or External Disposal of Condensate (1 pack)	1	NA	NA	NA
INSULATION-KIT	Insulation Kit to Make a Standard Non-Insulated Wall Sleeve Insulated	10	NA	NA	NA

GRILLES

Stamped Aluminum Exterior Rear Grille

42" x 16"

This cost-effective, one-piece standard grille is made from durable anodized aluminum. The grille is lightweight, has a clear finish, and is easy to install from inside the room.



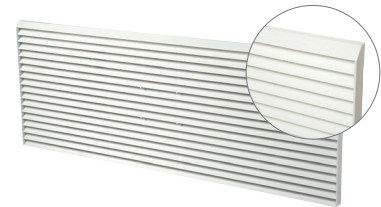
STAMPED ALUMINUM GRILLE		
ORDERING NO.	DESCRIPTION	APPROX SHIP WT
GRILLE-ALU-STAMP	Stamped Aluminum Exterior Grille, CLEAR FINISH	3

Polymer Architectural Rear Grille



42" x 16"

This value line of polymer architectural outdoor grilles will blend attractively with most building exteriors. Mounted easily from inside the room, the one-piece, molded grille is designed for protection, enhanced appearance, and superior weather-resistance. The grille is made of durable polymer and has a colorfast, lightly textured finish that blends well with most exterior finishes.

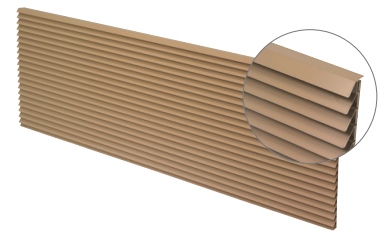


STAMPED ALUMINUM GRILLE		
ORDERING NO.	DESCRIPTION	APPROX SHIP WT
GRILLE-PLA-ALPIN	Polymer Architectural Exterior Grille, ALPINE (Matches Wall Sleeve)	7
GRILLE-PLA-WHITE	Polymer Architectural Exterior Grille, WHITE	7
GRILLE-PLA-BEIGE	Polymer Architectural Exterior Grille, BEIGE	7
GRILLE-PLA-BROWN	Polymer Architectural Exterior Grille, BROWN	7

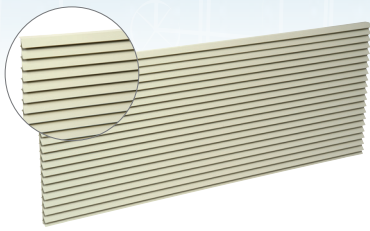
Aluminum Architectural Rear Grille

42" x 16"

This premium line of decorative outdoor grilles will enhance the appearance of any building. The grilles are made of strong, durable, extruded, anodized aluminum and are designed to be mounted easily from inside the room. These elegant grilles, available in many standard colors, have baked enamel finishes containing 50% Kynar® resin, for a superior finish that will withstand the most extreme conditions.



STAMPED ALUMINUM GRILLE		
ORDERING NO.	DESCRIPTION	APPROX SHIP WT
GRILLE-ALU-CLEAR	Aluminum Architectural Exterior Grille, CLEAR FINISH	7
GRILLE-ALU-ALPIN	Aluminum Architectural Exterior Grille, ALPINE (Matched Wall Sleeve)	7
GRILLE-ALU-WHITE	Aluminum Architectural Exterior Grille, WHITE	7
GRILLE-ALU-BRONZ	Aluminum Architectural Exterior Grille, BRONZE	7
GRILLE-ALU-MBRNZ	Aluminum Architectural Exterior Grille, MED BRONZE	7
GRILLE-ALU-DBRNZ	Aluminum Architectural Exterior Grille, DARK BRONZ	7
GRILLE-ALU-BEIGE	Aluminum Architectural Exterior Grille, BEIGE	7
GRILLE-ALU-CUSTOM	Custom colored grilles are available.	7



Hurricane Grade Architectural Rear Grille

Extruded aluminum architectural grille that meets the Florida Building Code for hurricane wind loads on buildings and structures including the Rigid Missile Hurricane Impact Test. These roughed grilles are available with anodized aluminum finish and a baked-on paint finish for durability.

HURRICANE IMPACT ARCHITECTURAL GRILLES **		
ORDERING NO.	DESCRIPTION	APPROX SHIP WT
GRILLE-HUR-CLEAR	Aluminum Hurricane Grade Architectural Exterior Grille, CLEAR FINISH	7
GRILLE-HUR-ALPIN	Aluminum Hurricane Grade Architectural Exterior Grille, ALPINE (Matches Wall Sleeve)	7
GRILLE-HUR-WHITE	Aluminum Hurricane Grade Architectural Exterior Grille, WHITE	7
GRILLE-HUR-BEIGE	Aluminum Hurricane Grade Architectural Exterior Grille, BEIGE	7
GRILLE-HUR-BRONZ	Aluminum Hurricane Grade Architectural Exterior Grille, LIGHT BRONZE	7
GRILLE-HUR-MBRNZ	Aluminum Hurricane Grade Architectural Exterior Grille, MEDIUM BRONZE	7
GRILLE-HUR-DBRNZ	Aluminum Hurricane Grade Architectural Exterior Grille, DARK BRONZE	7
GRILLE-HUR-CUSTOM	Aluminum Hurricane Grade Custom colored grilles are available.	7

**The Dade-Miami County/Florida Building Code requires exterior cladding components be designed to protect life and property in structures exposed to high velocity hurricane force winds.

SUBBASES

Universal Subbase

The non-electrical subbase is made of heavy gauge steel to provide support for the wall sleeve. The subbase is designed to mount directly to the wall sleeve and contains adjustable legs from 3-1/4 in. to 5-1/2 in. (80 to 140 mm) for leveling, side filler panels and mounting holes for an electrical modules. It will accept circuit fuse, power disconnect switch and conduit hardwire modules.



Leveling Legs

Leveling legs attach easily to the wall sleeve and offer accurate leveling and support for units without a subbase. Leveling legs are adjustable from 3--1/4 to 5--1/2 inches (80 to 140 mm).



NON-ELECTRICAL SUBBASE		
ORDERING NO.	DESCRIPTION	APPROX SHIP WT
PTAC-SUBBASE-A	Universal Subbase with adjustable legs, side filler panels and mounting holes for electrical subbase modules	7
LEVELING-LEGS	Leveling legs for wall sleeve support and leveling when a subbase is not used	3

Electrical Standard Subbase

Upgrade universal subbase to a fully electrical subbase by add an Electrical Subbase module. The electrical subbase modules have an electrical junction box, receptacle outlet, and cover plate.



SUBBASE FIELD-INSTALLABLE MODULE		
ORDERING NO.	DESCRIPTION	APPROX SHIP WT
PTAC-REC-230V15-A	Field Installed Subbase Receptacle 208/230V, 15 amp	2
PTAC-REC-230V20-A	Field Installed Subbase Receptacle 208/230V, 20 amp	2
PTAC-REC-230V30-A	Field Installed Subbase Receptacle 208/230V, 30 amp	2
PTAC-REC-265V15-A	Field Installed Subbase Receptacle 265V, 15 amp	3
PTAC-REC-265V20-A	Field Installed Subbase Receptacle 265V, 20 amp	3
PTAC-REC-265V30-A	Field Installed Subbase Receptacle 265V, 30 amp	3

Subbase Disconnect Switch

The subbase power disconnect switch modules provides an electrical disconnect for a PTAC unit when required by local codes. The module contains a 230v/277v DPDT switch, electrical junction box, and cover plate.



SUBBASE POWER DISCONNECT SWITCH MODULE		
ORDERING NO.	DESCRIPTION	APPROX SHIP WT
PTAC-SWITCH-A	Field installable power disconnect switch for Universal Subbase	3



Subbase Fuse Kit

The Subbase Fuse Module provides in-line over-current protection at the unit when required by NEC (National Electric Code) or local codes. The module contains a cartridge-style fuse, electrical junction box, and cover plate.

SUBBASE FUSES MODULE		
ORDERING NO.	DESCRIPTION	APPROX SHIP WT
PTAC-FUSE-15A	15 amp Fuse Module for Universal Subbase.	3
PTAC-FUSE-20A	20 amp Fuse Module for Universal Subbase.	3
PTAC-FUSE-30A	30 amp Fuse Module for Universal Subbase.	3



Subbase Hardwire Module

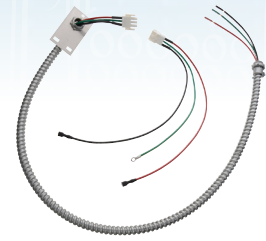
The Subbase Hardwire Module integrates the hardwire power connection required by NEC (National Electrical Code) to the universal subbase. The module includes 18" steel conduit with wires, junction box, cover plate and all unit connections.

SUBBASE HARDWIRE MODULE		
ORDERING NO.	DESCRIPTION	APPROX SHIP WT
PTAC-HW-230V	208/230v Hardwire Subbase Module with steel conduit whip and all unit mount connections.	3
PTAC-HW-265V	265v Hardwire Subbase Module with steel conduit whip and all unit mount connections.	3

ELECTRICAL WIRING

Hardwire Kit

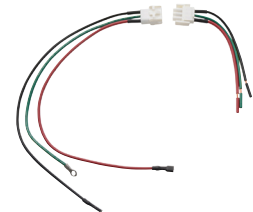
This accessory hardwire kit provides a permanent connection to the unit. Electrical hard wiring is required when NEC (National Electrical Code) or local codes restrict the use of power cord and plug connections. The hardwire kit mounts on the front right side of the unit and comes with 36 inches of flexible steel conduit and a Molex connector for easy connect / disconnect.



HARDWIRE CONDUIT KITS		
ORDERING NO.	DESCRIPTION	APPROX SHIP WT
HARDWIRE-KIT-230V	Permanent Power Connection to the unit (including 36-in of flexible steel conduit. For 208/230v ETAC applications	2
HARDWIRE-KIT-265V	Permanent Power Connection to the unit (including 36-in of flexible steel conduit. For 265v ETAC applications.	2
HARDWIRE-KIT-15A GA Series Only	Permanent Power Connection to the Unit (Includes 36-in . of Flexible Conduit and Unit-Mounted Power Connector) . For units that require 15 amp service and 2.5 kW electric heat (230/208V OR 265V) . Note: Electrical circuit breaker and all wiring, must be rated for 15 amp service or greater.	2
HARDWIRE-KIT-20A GA Series Only	Permanent Power Connection to the Unit (Includes 36-in . of Flexible Conduit and Unit-Mounted Power Connector) . For units that require 20 amp service and 3.5 kW electric heat (230/208V OR 265V) . Note: Electrical circuit breaker and all wiring, must be rated for 20 amp service or greater.	2
HARDWIRE-KIT-30A GA Series Only	Permanent Power Connection to the Unit (Includes 36-in . of Flexible Conduit and Unit-Mounted Power Connector) . For units that require 30 amp service and 5 kW electric heat (230/208V OR 265V) . Note: Electrical circuit breaker and all wiring, must be rated for 30 amp service or greater.	2

Conduit Interface Kit

The conduit interface accessory kit provides the wire connection between the unit and an existing hardwire conduit power connection. Kit contains a molex connector for easy disconnect and mounting hardware for a reliable installation.



HARDWIRE CONDUIT KITS		
ORDERING NO.	DESCRIPTION	APPROX SHIP WT
CONDUIT-INTF-230V	Conduit interface kit to connect an ETAC unit to existing hardwire conduit. power connection For 208/230v ETAC applications	2
CONDUIT-INTF-265V	Conduit interface kit to connect an ETAC unit to existing hardwire conduit power connection. For 265v ETAC applications	2
CONDUIT-INTF-4PK E-TAC Series Only	Conduit Interface provides the wire connection to the unit and existing installed conduit. For all 208, 230v & 265v E-TAC models.	2
CONDUIT-KIT-15A GA Series Only	Interface kit for field supplied conduit, to provide permanent power connection to the unit. Intended for units that require 15 amp service, 2.5 KW electric heat (230/208V OR 265V).	2
CONDUIT-KIT-20A GA Series Only	Interface kit for field supplied conduit, to provide permanent power connection to the unit. Intended for units that require 20 amp service, 3.5 KW electric heat (230/208V OR 265V).	2
CONDUIT-KIT-30A GA Series Only	Interface kit for field supplied conduit, to provide permanent power connection to the unit . Intended for units that require 30 amp service, 5 KW electric heat (230/208V OR 265V).	2

THERMOSTATS

Wireless Thermostats



This low voltage wireless wall thermostat provides easy installation and superior performance. The T631W fits the décor in any room and finally correct comfort problems without cutting holes and fishing wires through walls. The wireless technology ensures dependable and reliable communication between the thermostat and receiver module around the clock. Includes both wireless wall thermostat and receiver module and features:

- Two speed fan control (High and Low Speed)
- Universal 2H/1C Heat Pump of 1H/1C Conventional
- Power Loss Memory
- Heating and Cooling Set-point Limit
- Large Temperature and Set-point Display
- Large Blue Backlight Screen

WIRELESS WALL THERMOSTATS		
ORDERING NO.	DESCRIPTION	APPROX SHIP WT
T631W-2	Wireless Thermostat and Base Module with backlighting, F/C, single stage compatible with Heat Pump or Heat/Cools models	2

Non-Programmable Thermostat



This low-voltage, easy-to-use non-programmable thermostat provides maximum guest comfort.

- Large Display with Bright Blue Backlight
- Adjustable Temperature Set Point Limits
- Non-Volatile Memory Retains User Settings
- Easy Access Front Battery Door
- Compressor Short Cycle Protection
- Separate Heating and Cooling Set Points
- ESD Guard™ Electronic Circuitry
- Display Degree F or C Switch
- Mount to Horizontal Box
- Adjustable Temperature Differential

WIRED NON-PROGRAMMABLE WALL THERMOSTATS		
ORDERING NO.	DESCRIPTION	APPROX SHIP WT
T701	PTAC Non-Programmable Heat/Cool Thermostat with backlighting, °F/°C, 1-Stage Heat/1-Stage Cool	2

Digital Programmable Thermostat



This low-voltage, easy-to-use programmable thermostat provides great guest comfort and maximum energy savings. This micro computer controlled, 7-day programmable single stage (1 Heat, 1 Cool) wall thermostat fits all decors. Its large 4 sq. inch display with blue backlight and glow in the dark light button make it easy to see in the daytime and night time. Easy menu driven programming with intuitive wake, leave, return, sleep programming icons.

The programmable model includes the non-programmable features plus the following:

- 5-2 Day Separate Weekday / Weekend Programming
- Adaptive Recovery Mode (ARM™)
- Separate Heating and Cooling Set Point Program Times
- Temporary Program Override
- Programmable Extended Hold Mode
- Meets California Title 24 Guidelines

WIRED PROGRAMMABLE WALL THERMOSTATS		
ORDERING NO.	DESCRIPTION	APPROX SHIP WT
TT-P-411	PTAC 7-day Programmable Heat/Cool Thermostat with backlighting, °F/°C, 1-Stage Heat/1-Stage Cool (For Heat/Cool Models)	2

MISCELLANEOUS

Lateral Duct Kit

The lateral duct kit allows one unit to heat or cool two rooms. The kit provides substantial savings for apartments, hotels, and offices by eliminating the need for separate units in every room. The amount of air that is diverted to an adjoining room is selectable.



The kit contains the following:

- Plenum with Transition
- 48-in Extension Duct
- Molding to Trim the Wall Opening
- Wall register
- Wall Sleeve Mounting Brackets
- Adjustable Air Diverter

LATERAL DUCT KIT		
ORDERING NO.	DESCRIPTION	APPROX SHIP WT
LATERAL-DUCT	The lateral duct kit allows one unit to heat or cool two rooms.	36

PTAC Air Knight

The PTAC Air Knight air purification system is designed to help eliminate unhealthy indoor environments by reducing odors, air pollutants, VOC's (chemical odors), smoke, mold, bacteria and viruses. The Air Knight is easy to install inside the unit air discharge stream. The indoor fan delivers air treatment quietly and affectively into the room . The Air Knight is never lost or misplaced since it stays attached to the units.



PTAC AIR KNIGHT		
ORDERING NO.	DESCRIPTION	APPROX SHIP WT
TP-AKPTAC	PTAC Air Knight air purification system	4

SECURITY DOOR LOCK

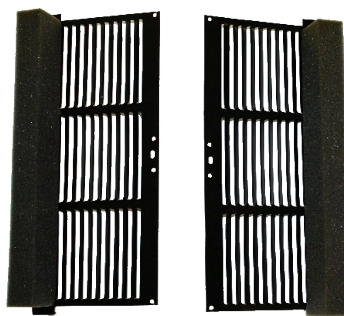
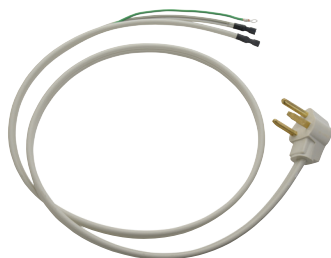
This Locking Security Door Kit prevents unauthorized access to the heating and cooling controls This field-installed accessory includes a control door with lock assembly and two matching keys.



SECURITY DOOR LOCK		
ORDERING NO.	DESCRIPTION	APPROX SHIP WT
PTAC-LOCK-A	Gree ETAC Locking Door with keys to prevent unauthorized access to controls.	3
PTAC-LOCK-B	Gree PTAC GA series Locking Door with keys to prevent unauthorized access to controls.	3

MISCELLANEOUS

ORDERING NO.	DESCRIPTION	APPROX SHIP WT
ETAC-REMOTE-A	E9000 Remote Control for the E-TAC series only.	2
PTAC-DEFLECTOR-A	Discharge air deflector for GA-series and E-TAC series PTACs.	2
PTAC-SOUND-A	Sound Muzzler helps to absorb sound energy and blocks offensive noise from the compressor.	2
PTAC-CORD-15A	Extra Long 265v 15 amp power cord. Cord is 58 inches long	2
PTAC-CORD-20A	Extra Long 265v 20 amp power cord. Cord is 58 inches long	2
PTAC-CORD-30A	Extra Long Replacement 265v 30 amp power cord. Cord is 58 inches long	2
ETAC-AIRFILTER-2PK	Gree ETAC Replacement Air Filters (2 per pack)	2
GA-AIRFILTER-2PK	Gree GA series PTAC Replacement Air Filters (2 per pack)	2
BAFFLE-KIT-1PK	Accessory Baffle Kit is required for applications where a factory wall sleeve is used without a factory exterior grille, to prevent air re-circulation.	2
SLEEVE-MAINT-KIT	Wall Sleeve Maintenance Kit, includes 120-inch foam insulation to seal between wall sleeve and unit, four replacement J-Clips and four mounting screws.	1





E-TAC

www.greecomfort.com

 **GREE**
Change for Life