

TEMPSTAR[®]

Heating and Cooling Products

EXA, EPA “WT” Series Product Specifications

A-COILS FOR REPLACEMENT SERVICE

Exact Replacements For Older Generation A-Coils

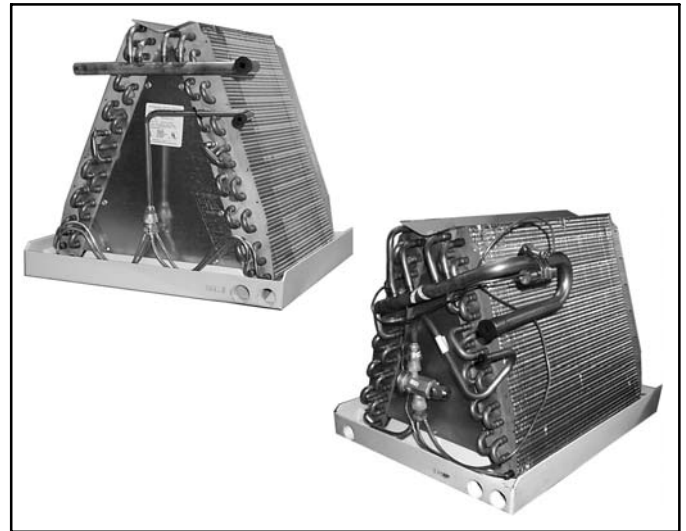
R-22 SYSTEMS

(R-410A TXV Kit Available For EPA ONLY)

1½ THRU 5 TONS

FEATURES

- Tin coated copper main tubing for additional corrosion protection
- Lanced aluminum fin
- Three primary condensate drain connections
- Field selectable secondary drain location
- Polymer thermoset drain pan
- Sweat connections
- Dry air holding charge
- Upflow/Downflow applications
- EPA Coils feature R-22 Orifice Pin refrigerant metering
- EXA Coils have R-22 Thermostatic Expansion Valves
- Thermostatic Expansion Valve Kit available for Orifice Pin Coils
- Designed for use with older generation fan coils: EF, FCP, FCX



WARRANTY

- 5 year parts limited warranty

Uncased “WT” A-Coil	Same A-Coil Used In				
	Cased Coil	Multipoise Cased Coil	Fan Coil		Electric Furnace
EPA	EPD	EPM	FCP		EF
EXA	EXD	EXM	FCX	FCV	EF

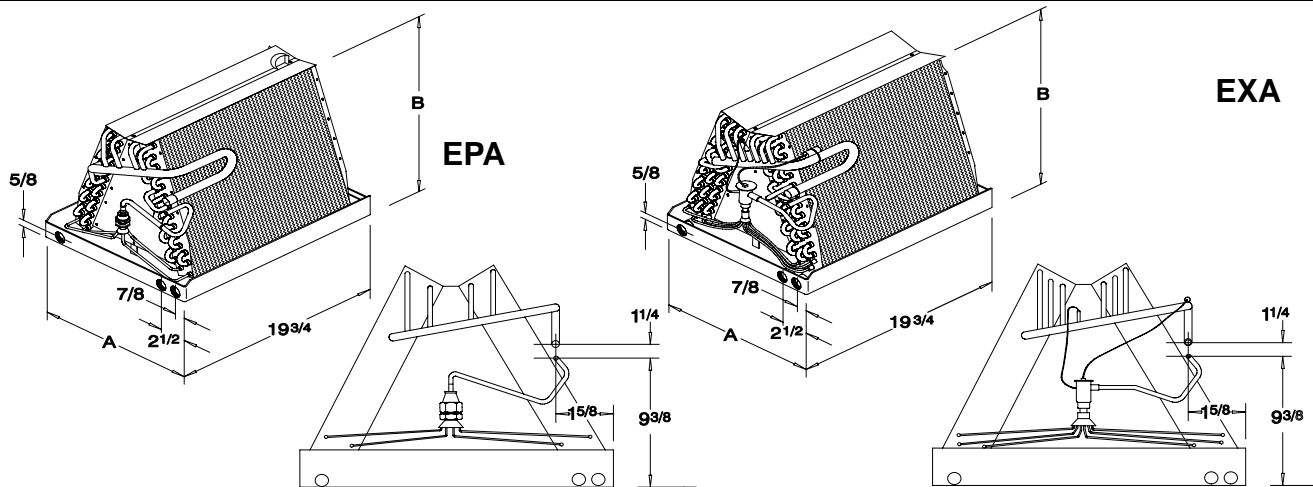
EPA R-22 TXV Conversion Kits		EPA R-410A TXV Conversion Kits	
18, 24, 30, 36	AMF153TKB	18, 24, 30	EBAC01TXVX
		36, 42	EBAC02TXVX
42, 48, 60	AMF355TKB	48	EBAC03TXVX
		60	EBAC04TXVX



Rated in accordance with ARI Standard 210 and/or 240. Certification applies only when used with proper components as listed with ARI.



DIMENSIONS - "A" COILS



"A" COILS, EPA & EXA

Model No.	Dimensions (inches)		Weights		Refrigerant Control	Connection Sweat	
	A	B	Net	Shpg.		Liq.	Suc.
EPA18B15WT (1)	14-3/4	10-1/2 (13-1/2) (1)	14	18	.051	3/8	3/4
EPA24B15WT	14-3/4	14-1/2	17	21	.057	3/8	3/4
EPA24F19WT	18-1/8	14-1/2	26	30	.057	3/8	3/4
EPA30B15WT	14-3/4	16-1/2	19	23	.065	3/8	3/4
EPA30F19WT	18-1/8	16-1/8	22	26	.065	3/8	3/4
EPA36B15WT	14-3/4	18-5/8	23	27	.073	3/8	3/4
EPA36F19WT	18-1/8	18-5/8	26	30	.073	3/8	3/4
EPA36J22WT	21-7/8	18	30	34	.073	3/8	3/4
EPA42F19WT	18-1/8	18-1/2	30	34	.078	3/8	1/8
EPA42J22WT	21-7/8	18	35	40	.078	3/8	1/8
EPA48F19WT	18-1/8	20-1/2	33	39	.079	3/8	1/8
EPA48J22WT	21-7/8	21-7/8	40	48	.079	3/8	1/8
EPA48L24WT	23-1/2	22-1/4	46	53	.079	3/8	1/8
EPA48N26WT	25-1/2	21-7/8	46	53	.079	3/8	1/8
EPA60J22WT	21-7/8	26-1/4	43	50	.092	3/8	1/8
EPA60L24WT	23-1/2	26-1/2	43	50	.092	3/8	1/8
EPA60N26WT	25-1/2	26	43	50	.092	3/8	1/8
EXA24B15WT	14-3/4	14-1/2	20	25	TXV	3/8	3/4
EXA24F19WT	18-1/8	14-1/2	26	30	TXV	3/8	3/4
EXA36B15WT	14-3/4	18-7/8	28	32	TXV	3/8	3/4
EXA36F19WT	18-1/8	18-1/2	31	35	TXV	3/8	3/4
EXA36J22WT	21-7/8	17-1/2	32	37	TXV	3/8	3/4
EXA42F19WT	18-1/8	22-1/2	31	35	TXV	3/8	1/8
EXA42J22WT	21-7/8	22-1/4	38	44	TXV	3/8	1/8
EXA48J22WT	21-7/8	26-1/4	39	45	TXV	3/8	1/8
EXA48L24WT	23-1/2	26-3/8	48	55	TXV	3/8	1/8
EXA48N26WT	25-1/2	26	48	55	TXV	3/8	1/8
EXA60L24WT	23-1/2	26-1/2	59	68	TXV	3/8	1/8
EXA60N26WT	25-1/2	26	59	68	TXV	3/8	1/8

NOTE: (1) EPA18B1WT, has a manifold height of 13 1/2 and they will not fit EF Series electric furnaces.

PERFORMANCE DATA (CFM vs DRY/WET STATIC @ INCHES WATER COLUMN)																						
Model No.	400		500		600		700		800		900		1000		1100		1200		1300		1400	
	Dry	Wet	Dry	Wet	Dry	Wet	Dry	Wet	Dry	Wet	Dry	Wet	Dry	Wet	Dry	Wet	Dry	Wet	Dry	Wet	Dry	Wet
EPA18B	.06	.08	.09	.12	.13	.16	.18	.20	.23	.26												
EPA24B,F					.11	.12	.14	.15	.18	.19	.23	.23	.27	.29								
EXA24B,F					.13	.16	.17	.20	.22	.26	.28	.33	.34	.40								
EPA30B									.18	.22	.22	.27	.28	.33	.33	.39	.39	.46				
EPA30F									.13	.17	.16	.20	.19	.24	.22	.28	.26	.33				
EPA36B									.18	.20	.22	.24	.27	.30	.32	.37	.37	.44	.43	.50	.50	.59
EPA36F,J													.19	.21	.21	.24	.25	.28	.29	.33	.33	.37
EXA36B												.22	.24	.27	.30	.32	.37	.37	.44	.43	.50	
EXA36F										.18	.21	.21	.26	.25	.30	.29	.36	.34	.41			
EXA36J													.14	.20	.16	.23	.18	.26	.21	.30	.21	.33
EPA42F													.21	.27	.25	.32	.29	.37	.33	.43	.33	.49
EPA42J													.18	.23	.21	.27	.24	.31	.26	.35		
EXA42F													.20	.24	.23	.28	.27	.33	.32	.37	.36	.42
EXA42J													.19	.23	.22	.27	.26	.31	.30	.35	.34	.40

PERFORMANCE DATA (CFM vs DRY/WET STATIC @ INCHES WATER COLUMN)																						
Model No.	1000		1100		1200		1300		1400		1500		1600		1700		1800		1900		2000	
	Dry	Wet	Dry	Wet	Dry	Wet	Dry	Wet	Dry	Wet	Dry	Wet	Dry	Wet	Dry	Wet	Dry	Wet	Dry	Wet	Dry	Wet
EPA48F			.20	.25	.23	.29	.27	.35	.32	.40	.36	.46	.41	.52	.47	.58						
EPA48J					.21	.25	.24	.28	.28	.33	.31	.37	.35	.42	.38	.46						
EPA48L					.18	.23	.20	.27	.23	.30	.26	.34	.29	.40	.32	.43						
EPA48N					.17	.23	.20	.27	.23	.30	.26	.34	.28	.40	.32	.42						
EXA48J					.19	.25	.24	.29	.26	.34	.31	.37	.33	.40								
EXA48L					.18	.24	.23	.27	.24	.31	.29	.34	.30	.37								
EXA48N					.17	.22	.20	.25	.22	.28	.25	.31	.27	.34								
EPA60J									.16	.19	.18	.21	.21	.26	.28	.29	.26	.34	.30	.38	.34	.43
EPA60L											.20	.24	.23	.28	.25	.31	.28	.35	.31	.38	.35	.43
EPA60N											.20	.24	.23	.28	.25	.31	.28	.35	.31	.38	.35	.43
EXA60L									.18	.23	.21	.26	.24	.30	.27	.34	.31	.38	.35	.43	.39	.48
EXA60N									.18	.22	.21	.25	.24	.29	.27	.34	.30	.38	.34	.42	.37	.47

COIL MODEL NUMBER IDENTIFICATION GUIDE						
	E	P	A	36	B15	WT
E = Evaporator		TYPE	APPLICATION	NOMINAL CAPACITY	WIDTH	REVISION CODE
E = Entry Level Orifice Pin						
P = Orifice Pin						
X = TXV						
A = Uncased						
18 = 18,000 BTUH = 1½ tons						
24 = 24,000 BTUH = 2 tons						
30 = 30,000 BTUH = 2½ tons						
36 = 36,000 BTUH = 3 tons						
42 = 42,000 BTUH = 3½ tons						
48 = 48,000 BTUH = 4 tons						
60 = 60,000 BTUH = 5 tons						
B15 = 14¾" Drain Pan (For 15½" Cabinet)						
F19 = 18⅛" Drain Pan (For 15½" Cabinet)						
J22 = 21⅞" Drain Pan (For 15½" Cabinet)						
L24 = 23½" Drain Pan (For 15½" Cabinet)						
N26 = 25½" Drain Pan (For 15½" Cabinet)						
WT = Replacement Service, Tin Coated Main Tubes						