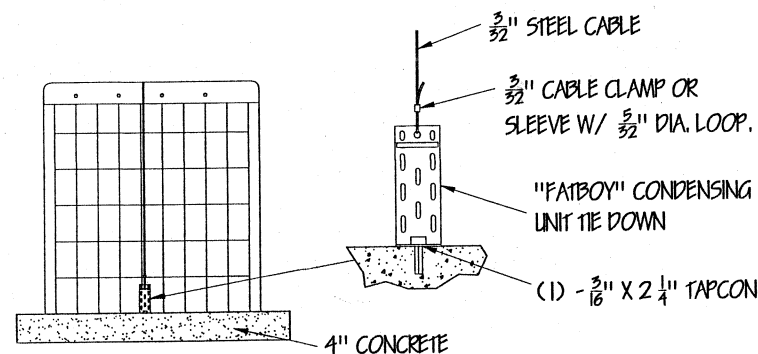


"FATBOY" INSTALLATION GUIDE

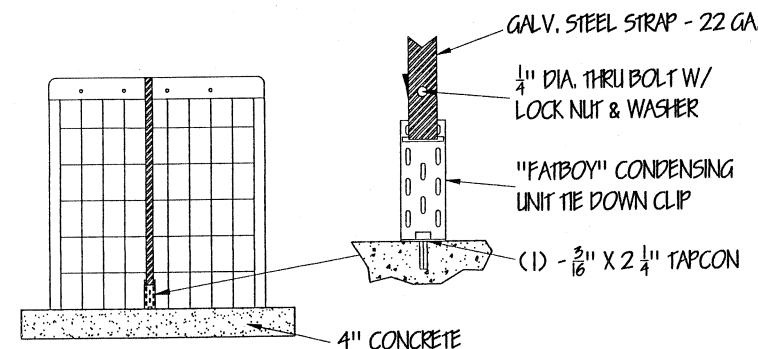
NOTE: THIS DETAIL IS A GRAPHICAL REPRESENTATION OF THE CLIP FORM, SEE TABLES FOR PROPER NUMBER OF ATTACHMENTS PER SIDE ACCORDING TO HEIGHT OF INSTALLATION AND TYPE OF ATTACHMENT



"FATBOY" CABLE INSTALLATION GUIDE

NOTE: THIS DETAIL IS A GRAPHICAL REPRESENTATION OF THE CLIP FORM, SEE TABLES FOR PROPER NUMBER OF ATTACHMENTS PER SIDE ACCORDING TO HEIGHT OF INSTALLATION AND TYPE OF ATTACHMENT

NOTE: CABLES MAY ONLY BE USED FOR WIND SPEEDS 170 MPH AND NUMBER OF CLIPS OF 1 PER SIDE AT HEIGHT OF LESS THAN 15' ALL OTHER HEIGHTS TO 60 FT. AND 170 MPH, USE 2 CABLES PER SIDE.



"FATBOY" STRAP INSTALLATION GUIDE

NOTE: THIS DETAIL IS A GRAPHICAL REPRESENTATION OF THE CLIP FORM, SEE TABLES FOR PROPER NUMBER OF ATTACHMENTS PER SIDE ACCORDING TO HEIGHT OF INSTALLATION AND TYPE OF ATTACHMENT

NOTE: STRAP ATTACHMENT MAY ONLY BE USED AT HT. OF 0'-15' FT. AND FOR 170 MPH. ONLY

NOTE: SEE TABLES FOR WIND VELOCITY AND HEIGHT OF INSTALLATION ABOVE GROUND, ALSO SEE TABLES FOR CONNECTOR TYPE WHEN ATTACHING TO ALUMINUM OR STEEL.

TABLE OF DIRECT ATTACHMENT TO UNIT SHELL		
3/16" ADDITIONAL PLATE HT. ABOVE GROUND	170 MPH NO. OF #10 SCREWS SELF DRILLING SCREWS	180 MPH NO. OF #10 SCREWS SELF-DRILLING SCREWS
0 - 15'	2	3
20'	2	3
25'	2	3
30'	2	3
40'	2	3
50'	2	3
60'	2	4

NOTES:

- 1) ALL SCREWS SHALL BE NUMBER EA. CLIP.
- 2) FOR 170 MPH AND 180 MPH THERE SHALL BE A MIN. OF TWO CLIPS PER SIDE OF UNIT.
- 3) ALL SCREWS SHALL BE STAINLESS STEEL AND BE A MAXIMUM OF 1/2" LENGTH, FULL PENETRATION IN HOUSING, MAX. 3/4".

3/16" ADDITIONAL PLATE	170 MPH WIND VELOCITY TABLE OF STRAPPING A/C UNITS NUMBER OF STRAPS / CLIPS OR CABLES PER SIDE			
	HEIGHT ABOVE GROUND IN FT.	CONNECTION TO CONCRETE	CONNECTION TO ALUMINUM	CONNECTION TO STEEL
	0-15'	2	2	2
	20'	2	2	2
	25'	2	2	2
	30'	2	2	2
	40'	2	2	2
	50'	2	2	2
	60'	2	2	2

3/16" ADDITIONAL PLATE	180 MPH WIND VELOCITY TABLE OF STRAPPING A/C UNITS NUMBER OF STRAPS / CLIPS OR CABLES PER SIDE			
	HEIGHT ABOVE GROUND IN FT.	CONNECTION TO CONCRETE	CONNECTION TO ALUMINUM	CONNECTION TO STEEL
	0-15'	2	2	2
	20'	2	2	2
	25'	2	2	2
	30'	2	2	2
	40'	3	3	3
	50'	NO	NO	NO
	60'	NO	NO	NO

GENERAL NOTES:

1- ATTACHMENT TO CONCRETE SHALL BE BY MEANS OF (ONE) 3/8" DIA. TAPCON AS MANUFACTURED BY POWER FASTENERS, TAPPER & SCREW N.O.A. 15-0629.06, EXPIRES JULY 26, 2020 OR ITW BUILDEX, SAMMY SCREWS N.O.A. 11-0616.04, EXPIRES JULY 6, 2016 AND ITW BUILDEX ADVANCED THREADFORM TECHNOLOGY N.O.A. 12-0816.06, EXPIRES AUGUST 31, 2016. INSTALLED IN MINIMUM 3192 PSI COMPRESSIVE STRENGTH CONCRETE AND WITH A MINIMUM PENETRATION INTO CONCRETE OF 1 1/4" AND 2 1/4" MIN. EDGE DIST.

2- CONCRETE TO WHICH ATTACHMENT OF CLIP IS MADE SHALL HAVE A COMPRESSIVE STRENGTH OF 3192 PSI.

3- STEEL STRAPS OVER A/C UNITS SHALL BE 22 GA. GALVANIZED STEEL STRAP CONFORMING TO ASTM A 653 STANDARD WITH GALVANIZED IN CONFORMANCE WITH G90 AND HAVE A YIELD STRENGTH OF 33 KSI.

4- THE STEEL STRAP SHALL BE 1" WIDE AND BE CONNECTED WITH A 1/2" DIA. STEEL BOLT WITH WASHER AND BE TIGHTENED.

5- ANGLE CLIP USED IN ATTACHING THE STRAP TO THE SUPPORTING STRUCTURE SHALL BE AS MANUFACTURED BY, SNAP-RITE, 6285 PETERSON RD., LAKE PARK, GA. 31636 AND AS DETAILED IN THIS DRAWING.

6- ATTACHMENT OF CLIP TO ALUMINUM SHALL BE BY USING A ROOFING FELT AS SEPARATOR BETWEEN CLIP AND SUPPORTING ALUMINUM STRUCTURE AND USE OF A 3/8" DIAMETER SELF TAPPING OR DRILLED BOLT WITH LOCK WASHER AND NUT. SUPPORTING STRUCTURE SHALL BE AT LEAST 1/2" THICK ALUMINUM STRUCTURE SHALL BE MIN. 6061 T6 ALLOY.

7- ATTACHMENT OF CLIP TO SUPPORTING STEEL STRUCTURE SHALL BE BY A #8 SELF TAPPING SCREW AND INTO MATERIAL AT LEAST 1/2" THICK. SCREW MAY BE IN PULL OUT FORM.

8- ADDITIONAL PLATE USED AS REINFORCING SHALL BE EQUAL SPECIFICATION AS CLIP AND BE DRILLED WITH ONLY ONE HOLE MAXIMUM 1/2" DIAMETER IN THE SHORT LEG AND BE THE THICKNESS SPECIFIED AND 1" WIDE.

9- USE OF CABLE INSTEAD OF STEEL STRAP SHALL CONFORM TO FEDERAL SPECIFICATION RR-W-410D MEETING DIMENSIONAL STRENGTH REQUIREMENTS OF MIL-W-83420D AS SUPPLIED BY ELITE SALES INC. WITH A BREAKING STRENGTH OF 920 LBS. AND HAVE A MINIMUM DIAMETER OF 1/2" 7 X 7 STRANDS.

10- ATTACHING CLAMP SHALL BE 1/2" DIAMETER STEEL CONFORMING TO ASTM A36 STANDARDS MIN. YIELD OF 36 KSI. SEE CLIP DETAIL FOR ATTACHMENT LOCATION.

11- A/C UNITS THAT CONFORM TO THE SPECIFIED ATTACHMENT SHALL BE NO LARGER THAN 35.5" WIDE X 38.25" HIGH AND WEIGH NO LESS THAN 150 LBS. AS USED IN THE DESIGN.

12- WIND LOADS USED IN THE DESIGN SHALL BE AS PER ASCE 7-10, 3 SEC. GUST.

13- THIS PLAN SUPERCEDES ALL PREVIOUS ISSUES, SEE REVISION TABLE FOR LAST ISSUE DATE.

REVISIONS	BY
1 ADDITION OF CLIP CONNECTION TO HOUSING 6-15-09	A.A.
2 LAST ISSUE 1-31-12	A.A.
3 CHANGE TO ASCE 7-10 4-20-12	A.A.
4 CONN. CONC. 8-31-15	A.A.

THESE DRAWINGS ARE NOT VALID UNLESS SIGNED BY THE ENGINEER AND SEALED BY A SEAL. IT IS AN INFRACTION OF COPYRIGHT LAW TO REPRODUCE THIS DRAWING WITHOUT THE FULL WRITTEN CONSENT OF THE ENGINEER.

**A/C UNIT ANCHORING DETAILS
 FATBOY CLIPS AS
 MANUFACTURED BY: THE
 ORIGINAL PAN/SNAP RITE CO.
 FOR USE UNDER FLORIDA
 BUILDING CODE**

DRAWN:	A.A.A
CHECKED:	A.A.
DATE:	6-04-07
SCALE:	AS NOTED
JOB No. :	
SHEET:	S-1

1 OF 1