

# INSTALLATION INSTRUCTIONS

## MODEL# RXQG SERIES

### ROOF CURBS

This Roof Curb is built to NRCA specifications and is constructed of 18 gauge galvanized steel with a full perimeter 1" X 4" wood nailer strip. Curb height is determined by the part number as listed below.

RXQG-AAA08 =	8 inches high.
RXQG-AAA14 =	14 inches high.
RXQG-AAA 18 =	18 inches high.
RXOG-AAA24 =	24 inches high.

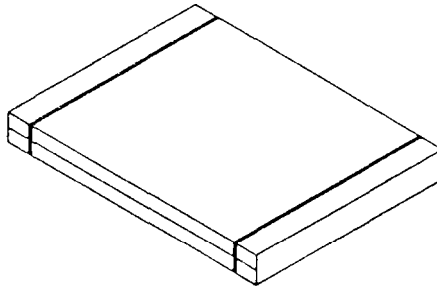


Figure 1

**STEP 1:**

Check for the correct number of parts. See list below

1. 2 ea. Curb Sides - 49  $\frac{1}{32}$ " long (A)
2. 2 ea. Curb Sides - 44  $\frac{19}{32}$ " long (B)
3. 1 ea. Duct Support - 16  $\frac{21}{32}$  long (C)
4. 1 ea. Duct Support - 41  $\frac{19}{32}$ " long (D)
5. 1 ea. Insulated Platform (E)
6. 2 ea. Unit Supports (F)
7. 1 ea. Hardware Package includes:
  - 10 ea. Hex Washer Screws #10 X  $\frac{1}{2}$ "
  - 4 ea. "Hinge" Pins  $\frac{3}{16}$ " X  $7\frac{1}{2}$ " (8 inch high)
  - 13  $\frac{1}{2}$ " (14 inch high)
  - 17  $\frac{1}{2}$ " (18 inch high)
  - 23  $\frac{1}{2}$ " (24 inch high)

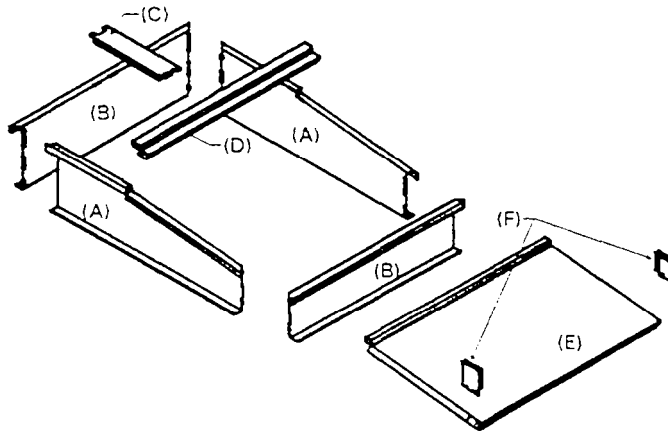


Figure 2

**STEP 2:**

Layout the curb pieces before assembly to insure that all the necessary pieces are included.

# INSTALLATION INSTRUCTIONS

## MODEL# RXQG SERIES

### ROOF CURBS

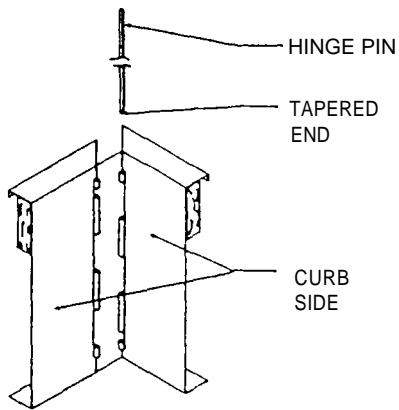


Figure 3

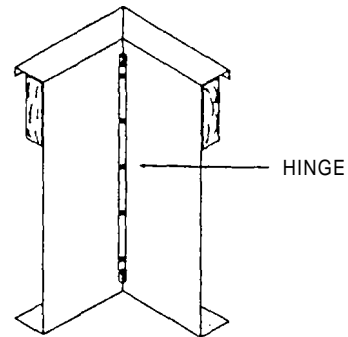


Figure 4

#### STEP 3:

Corner Assembly: Align each curb side as shown in (Figure 3). Using a hammer, drive the curb "hinge" pin down until the top of the pin is below the top of the curb (Figure 4).

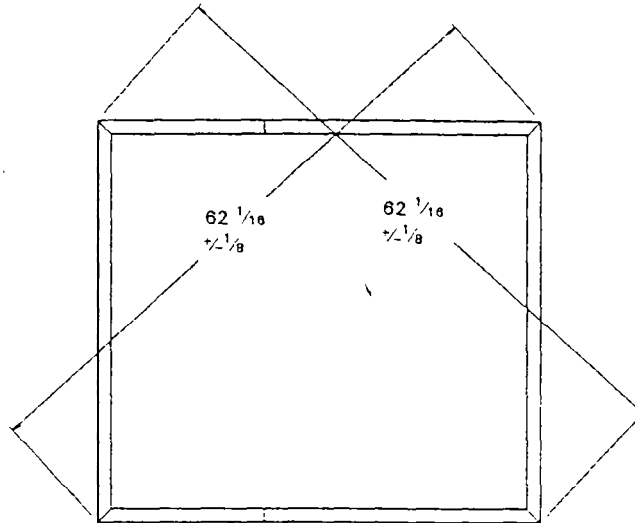


Figure 5

#### STEP 4:

After the four corners are assembled; the curb should be checked to be sure it is in "square". Do this by measuring diagonally from each opposite corner. The two measurements should be the same for each direction. See Figure 5.

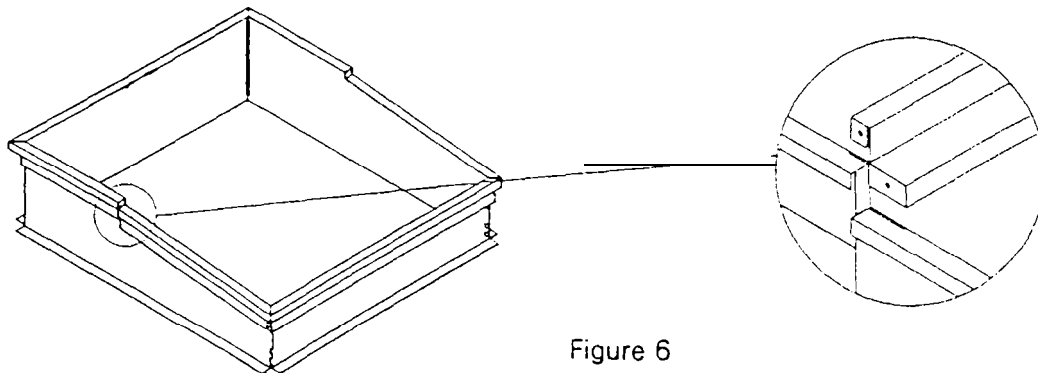


Figure 6

#### STEP 5:

Place the duct support (D) on the curb, making sure that it is in the right location. See figure 6.

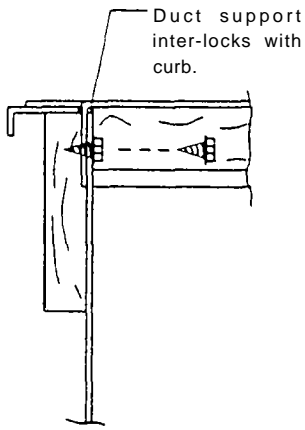
# INSTALLATION INSTRUCTIONS

## MODEL# RXQG SERIES

### ROOF CURBS

#### DETAILS

1.



The duct support flange goes in the slot on the curb. Screw the duct support to curb.

The RXQG can now have the duct support and the insulated pans installed, unless a transition (RXMC-CA02) is to be installed. If this is the case follow transition instruction from this point.

**STEP 6:**

Place duct support (C) on the curb and duct support (D), making sure that it is in the right location. See "DETAILS #1 and #2".

**STEP 7:**

Install the insulated platform (E) on the curb as shown with the roof opening over the desired duct location.

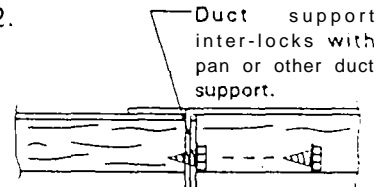
**STEP 8:**

Install unit supports (F) on platform as shown in Figure 6.

**STEP 9:**

If the curb is being assembled & moved to another location, attach the brace & pans to the curb as shown in the "DETAILS".

2.



The duct support flange goes in the slot on the pan. Screw the duct support and the pan together.

#### TOP VIEW

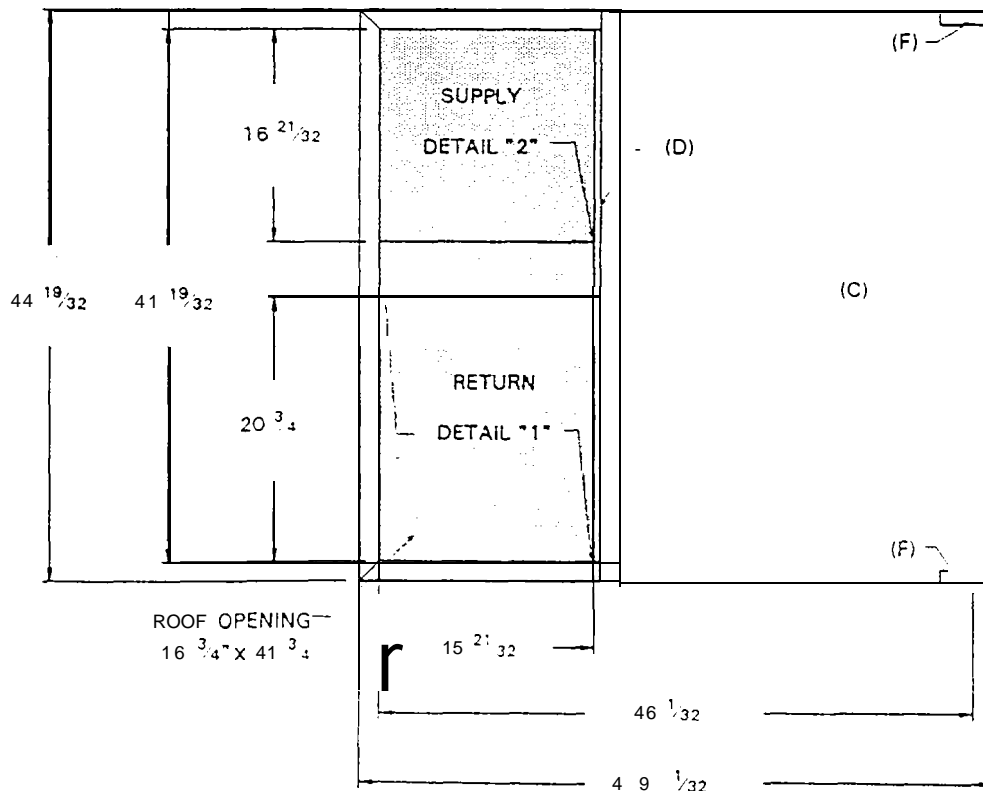


Figure 7

# INSTALLATION INSTRUCTIONS

## MODEL# RXQG SERIES

### ROOF CURBS

#### ROOFING INSTRUCTIONS

