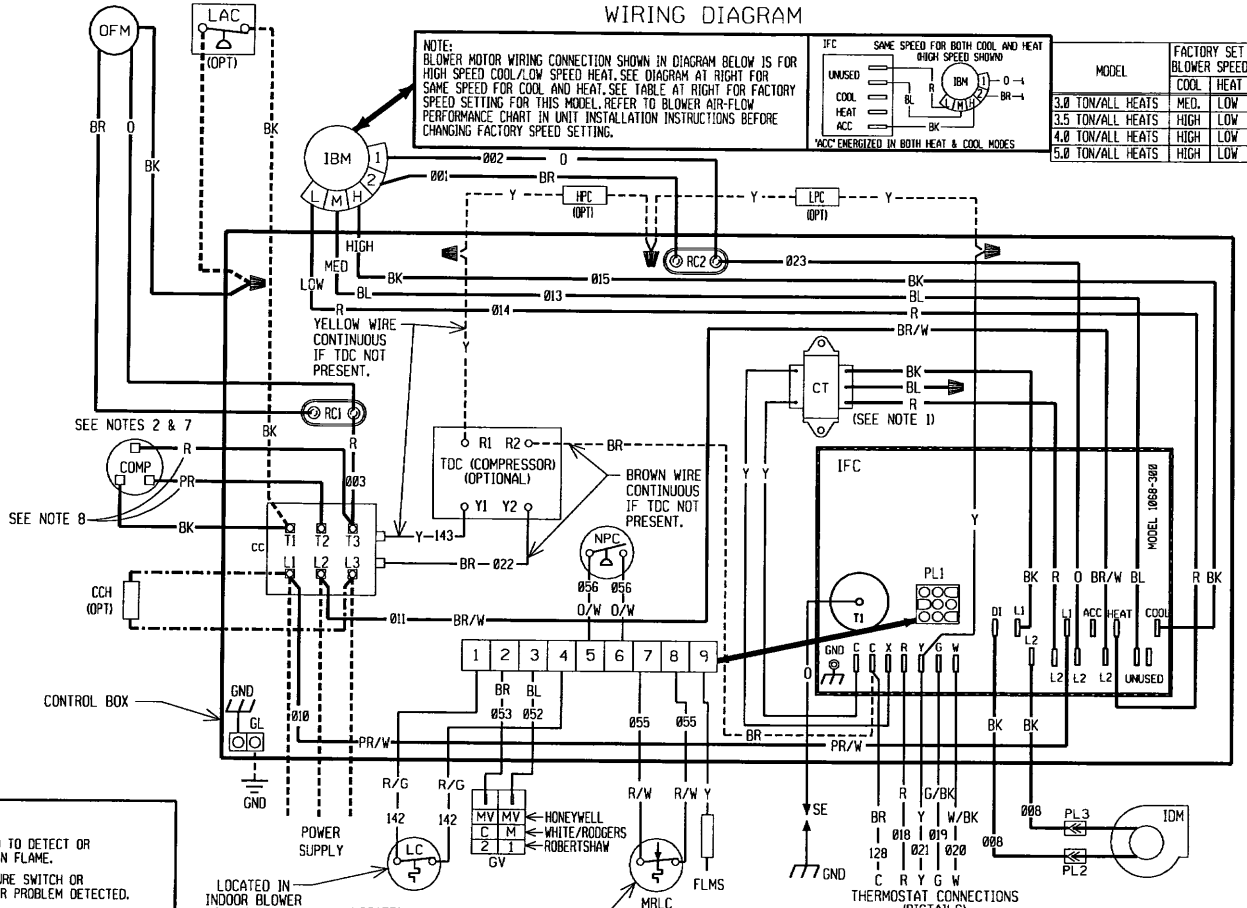
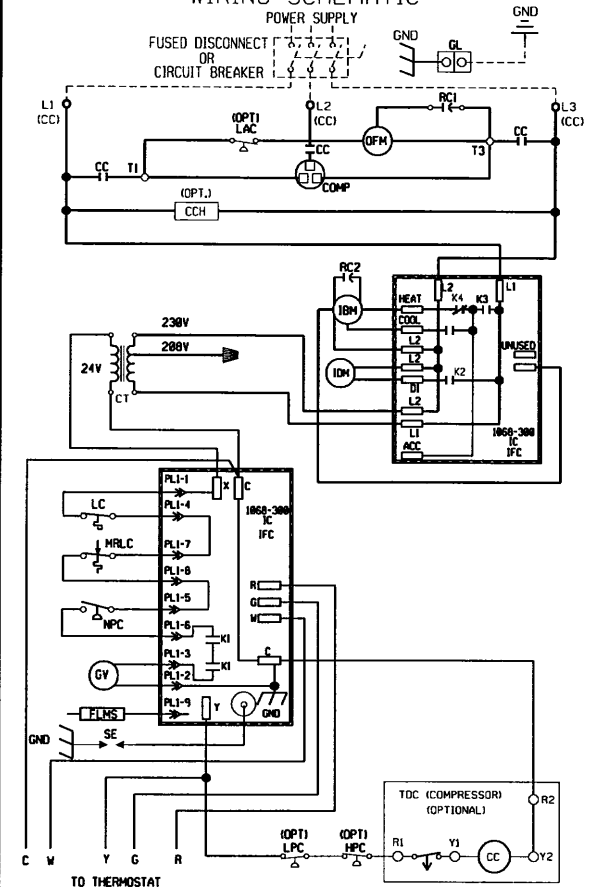


### WIRING DIAGRAM



### WIRING SCHEMATIC



### COMPONENT CODE

CC	COMPRESSOR CONTACTOR	LPC	LOW PRESSURE CONTROL
CCH	CRANKCASE HEATER	MRLC	MAN. RESET LIMIT CONTROL
COMP	COMPRESSOR	NPC	NEG. PRESSURE CONTROL
CT	CONTROL TRANSFORMER	OFM	OUTDOOR FAN MOTOR
FLMS	FLAME SENSOR	OPT	OPTIONAL
GL	GROUND LUG	PL	PLUG
GND	GROUND	RC	RUN CAPACITOR
GV	GAS VALVE	SE	SPARK ELECTRODE
HPC	HIGH PRESSURE CONTROL	TDC	TIME DELAY CONTROL
IBM	INDOOR BLOWER MOTOR	WN	WIRE NUT
IDM	INDUCED DRAFT MOTOR		
IFC	INTEGRATED FURNACE CONTROL		
HGS	HOT GAS SENSOR		
LAC	LOW AMBIENT COOLING CONTROL		
LC	LIMIT CONTROL		

### NOTES:

- MAIN UNIT TRANSFORMER PRIMARY LEADS: 60 HZ. RED-COMMON BLUE-208 V BLACK-230 V INTERCHANGE BLACK & BLUE LEADS FOR 208 V TRANSFORMER OPERATION.
- MOTORS & COMPRESSOR THERMALLY PROTECTED.
- CONNECTORS SUITABLE FOR USE WITH COPPER CONDUCTORS ONLY.
- CONNECT FIELD WIRING IN GROUNDED RAIN-TIGHT CONDUIT TO 60 HZ FUSED DISCONNECT.
- LOW VOLTAGE CIRCUIT IS N.E.C. CLASS 2 WITH A CLASS 2 TRANSFORMER 24 VOLT, 50/60 HERTZ SUPPLIED.
- REPLACEMENT FUSES MUST BE SAME TYPE & SIZE AS ORIGINAL.
- COMPRESSOR PROTECTED UNDER PRIMARY SINGLE-PHASE CONDITIONS.
- COMPRESSOR WIRES ARE ALL BLACK FOR UNITS WITHOUT MOLDED COMPRESSOR PLUG.

### WIRING INFORMATION

- LINE VOLTAGE**
- FACTORY STANDARD
  - FACTORY OPTION
  - FIELD INSTALLED
- LOW VOLTAGE**
- FACTORY STANDARD
  - FACTORY OPTION
  - FIELD INSTALLED
- REPLACEMENT WIRE**
- MUST BE THE SAME SIZE AND TYPE OF INSULATION AS ORIGINAL (Ø5 C\*MIN.)
- WARNING**
- CABINET MUST BE PERMANENTLY GROUNDED AND CONFORM TO I.E.C., N.E.C., C.E.C. AND LOCAL CODES AS APPLICABLE.

### WIRE COLOR CODE

BK	BLACK	GY	GRAY	R	RED
BR	BROWN	O	ORANGE	W	WHITE
BL	BLUE	PK	PINK	Y	YELLOW
G	GREEN	PR	PURPLE		

### ELECTRICAL WIRING DIAGRAM

3.0 - 5.0 TON GAS/ELECTRIC W/INTEGRATED FURNACE CONTROL W/PSC BLOWER MOTOR 208/230V, 3 - PHASE