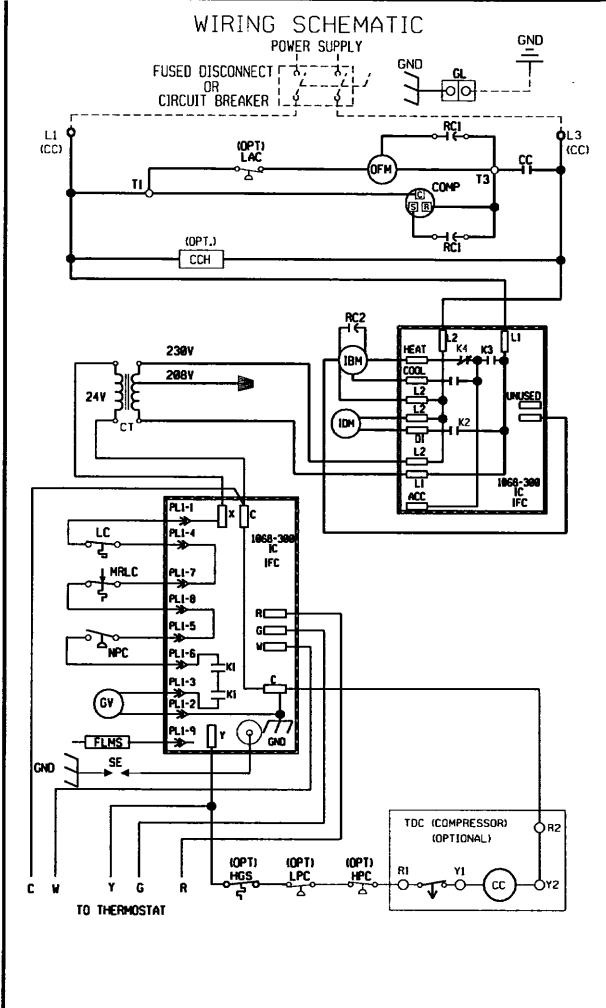
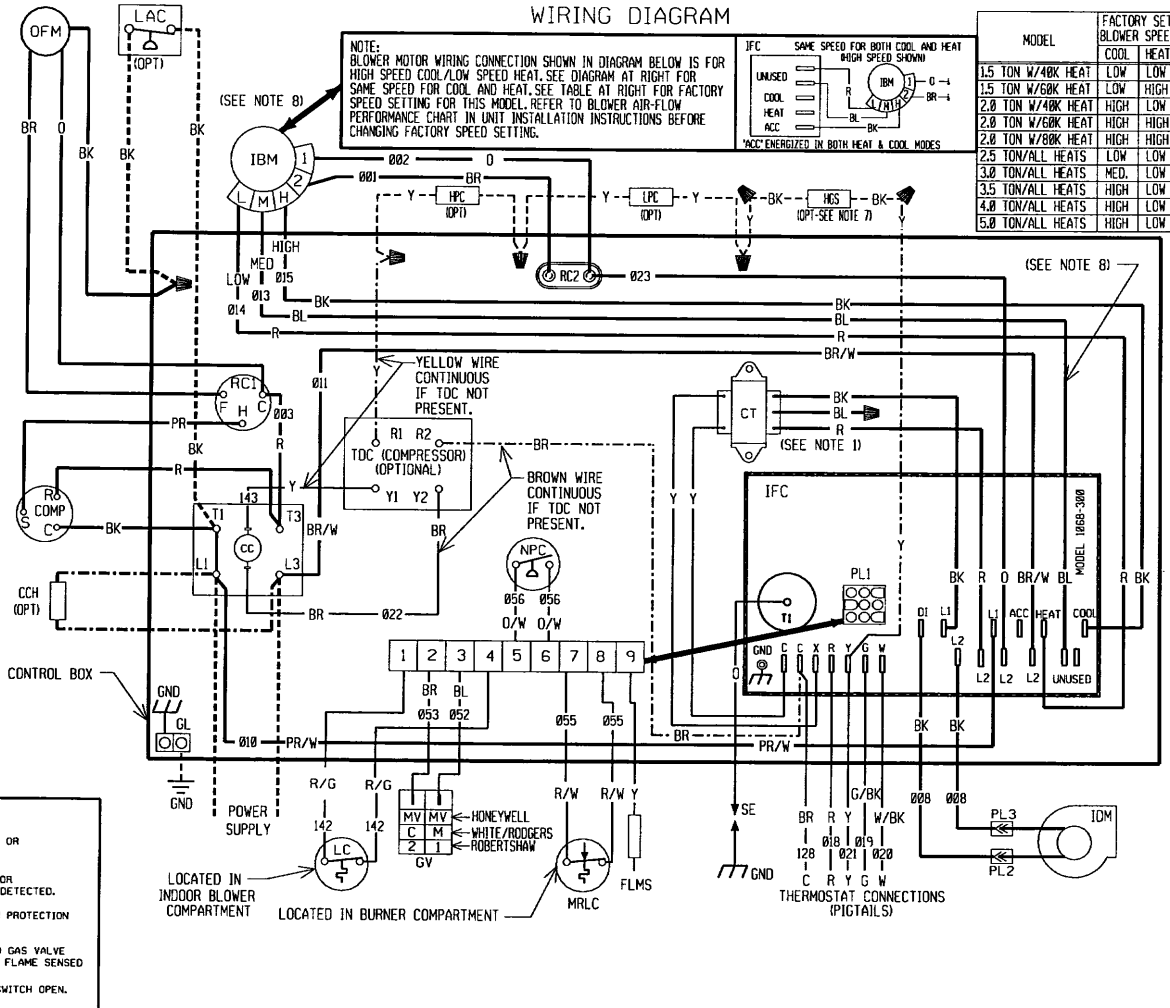


WIRING DIAGRAM



- DIAGNOSTICS**
- FLASH - FAILED TO DETECT OR SUSTAIN FLAME
 - FLASH - PRESSURE SWITCH OR INDUCER PROBLEM DETECTED.
 - FLASH - HIGH LIMIT SWITCH PROTECTION DEVICE OPEN.
 - FLASH - FLAME SENSED AND GAS VALVE NOT ENERGIZED OR FLAME SENSED AND NO "W" SIGNAL.
 - FLASH - FLAME ROLL OUT SWITCH OPEN.

COMPONENT CODE	
CC	COMPRESSOR CONTACTOR
CCH	CRANKCASE HEATER
COMP	COMPRESSOR
CT	CONTROL TRANSFORMER
FLMS	FLAME SENSOR
GL	GROUND LUG
GND	GROUND
GV	GAS VALVE
HPC	HIGH PRESSURE CONTROL
IBM	INDOOR BLOWER MOTOR
IDM	INDUCED DRAFT MOTOR
IFC	INTEGRATED FURNACE CONTROL
HGS	HOT GAS SENSOR
LAC	LOW AMBIENT COOLING CONTROL
LC	LIMIT CONTROL
LPC	LOW PRESSURE CONTROL
MRLC	MAN. RESET LIMIT CONTROL
NPC	NEG. PRESSURE CONTROL
OFM	OUTDOOR FAN MOTOR
OPT	OPTIONAL
PL	PLUG
RC	RUN CAPACITOR
SE	SPARK ELECTRODE
TDC	TIME DELAY CONTROL
WIRE NUT	WIRE NUT

- NOTES:**
- MAIN UNIT TRANSFORMER PRIMARY LEADS: 60 HZ RED-COMMON BLUE-208 V BLUE-230 V INTERCHANGE BLACK & BLUE LEADS FOR 208 V TRANSFORMER OPERATION.
 - MOTORS & COMPRESSOR THERMALLY PROTECTED.
 - CONNECTORS SUITABLE FOR USE WITH COPPER CONDUCTORS ONLY.
 - CONNECT FIELD WIRING IN GROUNDED RAINTIGHT CONDUIT TO 60 HZ FUSED DISCONNECT.
 - LOW VOLTAGE CIRCUIT IS N.E.C. CLASS 2 WITH A CLASS 2 TRANSFORMER 24 VOLT, 50/60 HERTZ SUPPLIED.
 - REPLACEMENT FUSES MUST BE SAME TYPE & SIZE AS ORIGINAL.
 - HGS LOCATED IN TOP OF COPELAND ZR**K1 COMPRESSORS ONLY.
 - MED. BLOWER SPEED AND BLUE MOTOR LEAD ON 2.5 - 4.0 TON MODELS ONLY.

- WIRING INFORMATION**
- LINE VOLTAGE**
- FACTORY STANDARD
 - FACTORY OPTION
 - FIELD INSTALLED
- LOW VOLTAGE**
- FACTORY STANDARD
 - FACTORY OPTION
 - FIELD INSTALLED
- REPLACEMENT WIRE**
- MUST BE THE SAME SIZE AND TYPE OF INSULATION AS ORIGINAL (105 C*MIN.)
- WARNING**
- CABINET MUST BE PERMANENTLY GROUNDED AND CONFORM TO I.E.C., N.E.C., C.E.C. AND LOCAL CODES AS APPLICABLE.

WIRE COLOR CODE

BK	BLACK	GY	GRAY	R	RED
BR	BROWN	O	ORANGE	W	WHITE
BL	BLUE	PK	PINK	Y	YELLOW
G	GREEN	PR	PURPLE		

ELECTRICAL WIRING DIAGRAM

1.5 - 5.0 TON GAS/ELECTRIC
W/INTEGRATED FURNACE CONTROL
W/PSC BLOWER MOTOR
208/230V, 1 - PHASE

DR. BY: AMF/PB APP. BY: [Signature] DATE: 08-1-95 DWG. NO. 90-23626-04 REV 10

DWG. NO. 90-23626-04 REV 10