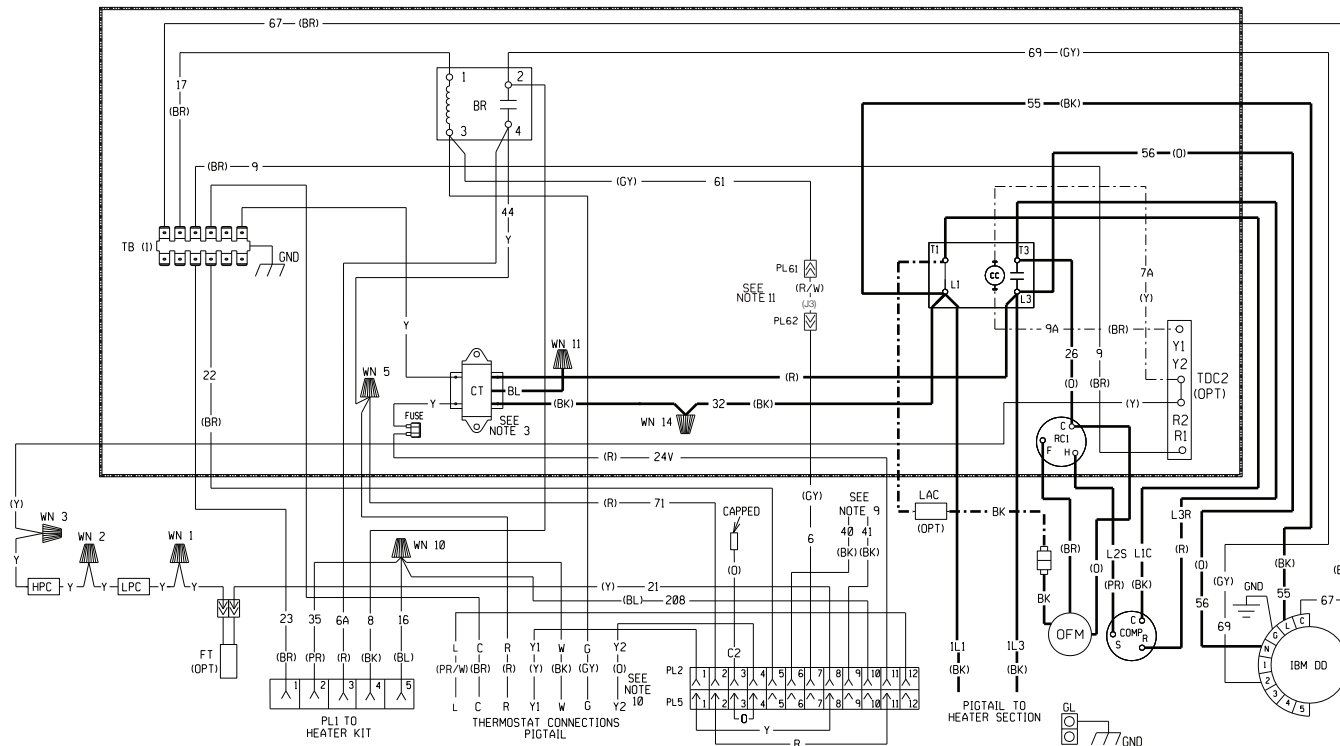
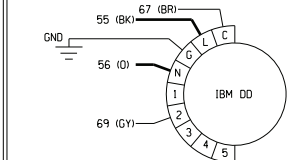


WIRING DIAGRAM



BLOWER MOTOR WIRING CONNECTION FOR DIRECT DRIVE ONLY

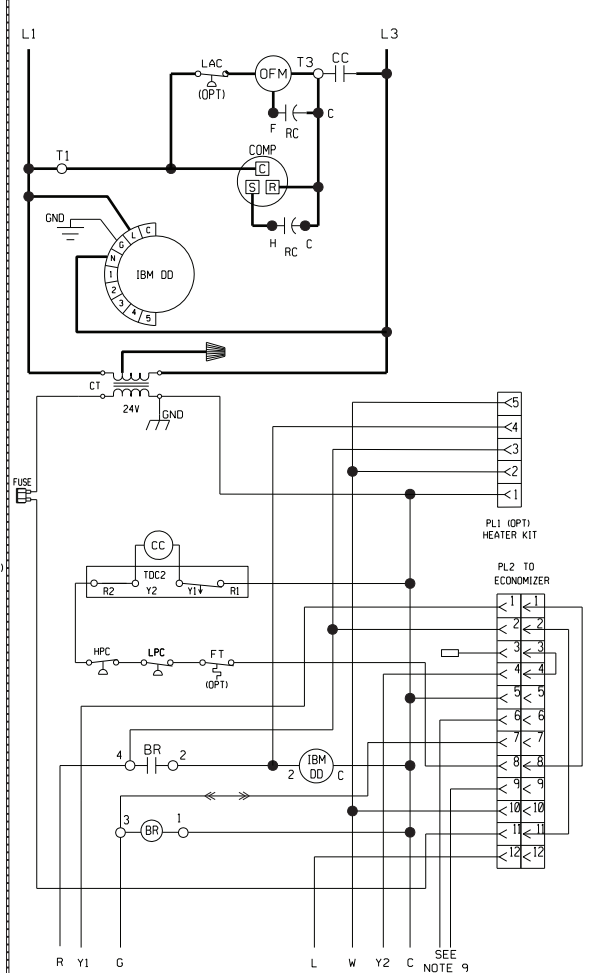


DETAIL "A"

NOMINAL COOLING CAPACITY	MOTOR SPEED FROM FACTORY		AVAILABLE SPEEDS	
	HEAT	COOL		
3 TON	LOW (TAP 2)	LOW (TAP 2)	LOW (TAP 2) MED (TAP 3) HIGH (TAP 4)	
	3.5, 4 TON	MED (TAP 2)	MED (TAP 2)	LOW (TAP 1) MED (TAP 2) MED (TAP 3) HIGH (TAP 4)
		MED (TAP 2)	MED (TAP 2)	LOW (TAP 1) MED (TAP 2) HIGH (TAP 3)

SEE "DETAIL A" FOR FACTORY SETTINGS. SEE NOTE 7

WIRING SCHEMATIC



WIRING INFORMATION

- LINE VOLTAGE \_\_\_\_\_
- FACTORY STANDARD \_\_\_\_\_
- FACTORY OPTION - - - - -
- FIELD INSTALLED - - - - -
- LOW VOLTAGE \_\_\_\_\_
- FACTORY STANDARD - - - - -
- FIELD INSTALLED - - - - -
- REPLACEMENT WIRE \_\_\_\_\_
- MUST BE THE SAME SIZE AND TYPE OF INSULATION AS ORIGINAL (105C. MIN.)

**WARNING**  
-CABINET MUST BE PERMANENTLY GROUNDED AND CONFORM TO I.E.C., N.E.C., C.E.C., NATIONAL WIRING REGULATIONS, AND LOCAL CODES AS APPLICABLE.

NOTES

1. CONNECTORS SUITABLE FOR USE WITH COPPER CONDUCTORS ONLY.
2. COMPRESSOR MOTOR THERMALLY PROTECTED. ALL 3 PHASE MODELS ARE PROTECTED UNDER PRIMARY SINGLE PHASE CONDITIONS.
3. CONTROL TRANSFORMER PRIMARY LEADS: RED-COM, BLUE-208V, BLACK-230V TRANSFORMER FACTORY WIRED FOR 230 VOLTS ON "J" & "C" MODELS. INTERCHANGE BLACK & BLUE LEADS FOR 208 VOLT OPERATION.
4. CONTACTOR FACTORY WIRED. CONNECT FIELD WIRE TO FACTORY SUPPLIED PIGTAIL.
5. LOW VOLTAGE CIRCUIT IS N.E.C. CLASS 2 WITH A CLASS 2 TRANSFORMER. 24V, 50/60 HZ SUPPLIED.
6. CONNECT FIELD WIRING IN GROUNDED RAIN TIGHT CONDUIT TO 60 HZ FUSED DISCONNECT.
7. MOTOR FACTORY WIRED FOR CORRECT SPEED.
8. SEE FUSE LABEL ON UNIT FUSE BOX FOR FUSE SIZING AND CLASSIFICATION.
9. WIRED FROM PL2 (6 & 9) GO TO THE MIXED AIR SENSOR ON THE OPTIONAL ECONOMIZER.
10. Y2 IS USED ONLY FOR THE OPTIONAL ECONOMIZER.
11. REMOVE JUMPER FOR FIELD INSTALLED OCCUPANCY RELAY.

COMPONENT CODES

- BR BLOWER RELAY
- CC COMPRESSOR CONTACTOR
- COMP COMPRESSOR
- CT CONTROL TRANSFORMER
- FT FREEZE STAT
- GL GROUND LUG
- GND GROUND
- GV GAS VALVE
- HPC HIGH PRESSURE CONTROL
- IBM INDOOR BLOWER MOTOR DIRECT DRIVE

- LAC LOW AMBIENT COOLING CONTROL
- LPC LOW PRESSURE CONTROL
- OFM OUTDOOR FAN MOTOR
- PL PLUG
- RC RUN CAPACITOR
- TB TERMINAL BLOCK (LOW VOLTAGE)
- TDC TIME DELAY CONTROL
- WN WIRE NUT

WIRE COLOR CODE

- BK.....BLACK G.....GREEN PR.....PURPLE
- BR.....BROWN GY.....GRAY R.....RED
- BL.....BLUE O.....ORANGE W.....WHITE
- Y.....YELLOW

ELECTRICAL WIRING DIAGRAM

208 / 230, 1 PHASE  
DIRECT DRIVE / X-MOTOR  
PACKAGE AIR CONDITIONER

APPROVED:	CHECKED:	ORIGINAL RELEASE NO.:
MODELED BY: MGR	DATE: 2-11-13	R-1058S007
PART NO.: 90-23597-24	REV: 03	