



The new degree of comfort.™

SOLUTIONS

FOR EVERY INDUSTRY

Office

School

Restaurant

Health Care

Retail



COMMERCIAL SERIES™

Package Equipment: 3-25 Ton Models

Split Systems: 3-20 Ton Models



INTEGRATED AIR & WATER



OUR HISTORY

Rheem Manufacturing Company was established in the mid-1920s when brothers Richard and Donald Rheem acquired a galvanizing plant in San Francisco, California. In the 1930s, Rheem began manufacturing water heaters. In the 1940s and 1950s, the company increased its product line to include space heating units for homes, oil furnaces and air conditioners. In 1959, Rheem became a pioneer in the water heating industry. In subsequent years, Rheem entered the heating and air conditioning market and expanded in the late 1960s and 1970s with the rapid growth of the central air conditioning industry. In 1985, the company acquired Raypak®, a leading producer of copper tube boilers used for swimming pool heating, commercial hot water supply and hydronic heating.

Office / School / Restaurant / Health Care / Retail

In every industry, reliable cost efficient heating and cooling is not an option... it is an absolute necessity.

Whether you're looking to keep a workplace cool and productive, students attentive, consumers comfortable or even need to ensure optimal conditions for climate-sensitive materials, Rheem *Commercial Series™* equipment can get the job done. One of the world's leading manufacturers of central heating and cooling products, Rheem® distributes a full line of industry standard R-410A commercial products – up to 25 tons.

TOTAL COMFORT SOLUTIONS PROVIDER

Rheem is an industry leader for total heating, cooling and water heating solutions. In fact, Rheem is one of the few global brands with product offerings covering residential and commercial heating, cooling, conventional and hybrid storage-style water heaters, tankless water heaters, solar water heating systems, hydronic and geothermal systems, indoor air quality accessories, and replacement parts for all categories – making Rheem a one-stop Air and Water comfort solutions provider.



INTEGRATED AIR & WATER

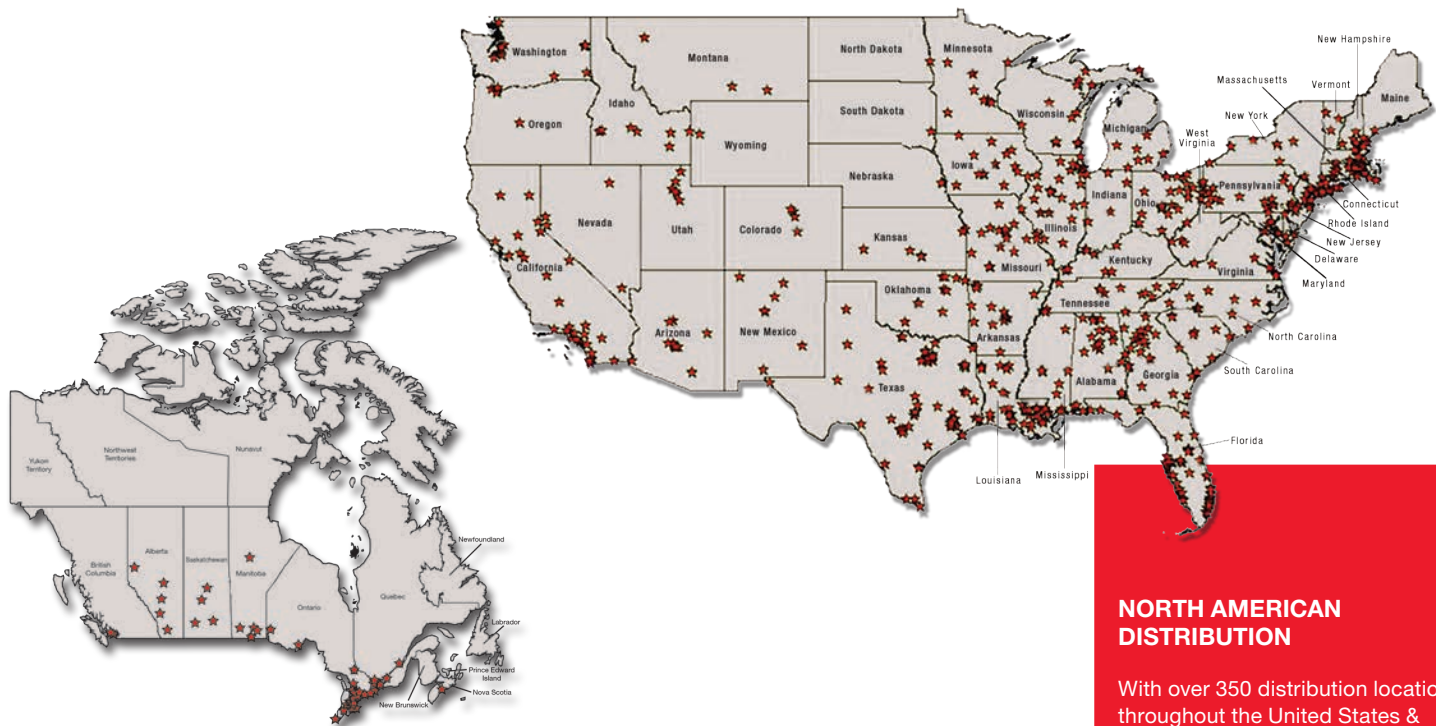


BUSINESS SOLUTIONS

Multi-million dollar testing facilities are utilized to create the heavy duty business solutions you depend on. Every commercial unit undergoes a complete and unrelenting system of evaluation and testing to ensure its quality and reliability. The ability to withstand rigorous salt spray testing in operating conditions from 0°F - 125°F, proves that Rheem *Commercial Series*™ units are the toughest in the industry. Our lean manufacturing focus, including state-of-the-art machinery, provides the flexibility required to integrate new innovative designs quickly, ensuring swift product introduction and availability. Nothing is spared when it comes to advancing the value of Rheem *Commercial Series*™ equipment. Satisfaction Guaranteed.

MISSION CONTROL

The *Commercial Series*™ product line is designed and produced in Fort Smith, Arkansas. The manufacturing facility, measuring over 19.8 acres under one roof, is dedicated to the development and production of equipment guaranteed to satisfy the comfort requirements of every industry.



NORTH AMERICAN DISTRIBUTION

With over 350 distribution locations throughout the United States & Canada, we are determined to give you access to our *Commercial Series*™ product line when and where you need it. Fast, simple delivery guaranteed.

COMMERCIAL PRODUCT GUIDE

PACKAGE GAS ELECTRIC



RRRL-C (16 SEER) Prestige Series™

- Efficiencies up to 16.3 SEER/12.4 SEER
- 1 & 3 Phase Models
- Scroll® Compressor
- Comfort Alert® Controls with Advanced Diagnostics
- Two-Stage Heating & Cooling Operation
- Nominal Sizes: 2 – 5 Ton



RRPL (14 SEER) Classic® Series

- 1 & 3 Phase Models
- Scroll® Compressor
- Nominal Sizes: 2 – 5 Ton



RRNL (13 SEER) Classic® Series

- 1 & 3 Phase Models
- Scroll® Compressor
- Nominal Sizes: 2 – 5 Ton



CLEARControl™ RKQN-A/-C (15 SEER) Commercial Classic® Plus Series

- 1 & 3 Phase
- -A Electro Mech. Models
- -C 3 Phase DDC Models
- Scroll® Compressor
- Nominal Sizes: 3,4,5 Ton



CLEARControl™ RKPN-A/-C (14 SEER) Commercial Classic® Series

- 1 & 3 Phase
- -A Electro Mech. Models
- -C 3 Phase DDC Models
- Scroll® Compressor
- Nominal Sizes: 3,4,5 Ton



CLEARControl™ RKNN-A/-C (13 SEER) Commercial Classic® Series

- 1 & 3 Phase
- -A Electro Mech. Models
- -C 3 Phase DDC Models
- Scroll® Compressor
- Nominal Sizes: 3,4,5 Ton

PACKAGE AIR CONDITIONERS



RSPM (14 SEER) Classic® Series

- 1 & 3 Phase Models
- Scroll® Compressor
- Nominal Sizes: 2 – 5 Ton



RSNM (13 SEER) Classic® Series

- 1 & 3 Phase Models
- Scroll® Compressor
- Nominal Sizes: 2 – 5 Ton



RSPL (14 SEER) Classic® Series

- 1 & 3 Phase Models
- Convertible Airflow
- Scroll® Compressor
- Nominal Sizes: 2 – 5 Ton



RSNL (13 SEER) Classic® Series

- 1 & 3 Phase Models
- Convertible Airflow
- Scroll® Compressor
- Nominal Sizes: 2 – 5 Ton



CLEARControl™ RLQN-A/-C (15 SEER) Commercial Classic® Plus Series

- 1 & 3 Phase
- -A Electro Mech. Models
- -C 3 Phase DDC Models
- Scroll® Compressor
- Nominal Sizes: 3,4,5 Ton



CLEARControl™ RLPN-A/-C (14 SEER) Commercial Classic® Series

- 1 & 3 Phase
- -A Electro Mech. Models
- -C 3 Phase DDC Models
- Scroll® Compressor
- Nominal Sizes: 3,4,5 Ton

PACKAGE HEAT PUMPS



RQRM (16 SEER) Prestige Series™

- Efficiencies up to 16 SEER/13 EER/8.5 HSPF
- 1 & 3 Phase Models
- Scroll® Compressor
- X-13 Motor
- Nominal Sizes: 2 – 5 Ton



RQPM (14 SEER) Classic® Series

- 1 & 3 Phase Models
- Scroll® Compressor
- Nominal Sizes: 2 – 5 Ton



RQNM (13 SEER) Classic® Series

- 1 & 3 Phase Models
- Scroll® Compressor
- Nominal Sizes: 2 – 5 Ton



RQPL-A (14 SEER) Classic® Series

- 1 & 3 Phase Models
- Convertible Airflow
- Scroll® Compressor
- Nominal Sizes: 2 – 4 Ton



RQNL-A (13 SEER) Classic® Series

- 1 & 3 Phase Models
- Convertible Airflow
- Scroll® Compressor
- Nominal Sizes: 2 – 4 Ton



CLEARControl™ RJPL-C (14 SEER) Commercial Classic® Series

- 3-Phase DDC Models
- Scroll® Compressor
- Nominal Sizes: 3 – 5 Ton

COMMERCIAL SPLIT HEAT PUMP



13PJL Value Series

- Cooling Efficiencies up to 14 SEER/12.25 EER
- Heating Efficiencies up to 8.20 HSPF
- Dependable & Durable Scroll® Compressor
- Nominal Sizes: 1.5 – 5 Ton



RPNL Classic® Series

- Efficiencies up to 15 SEER/12.75 EER
- Heating Efficiencies up to 10.30 HSPF
- 3 Phase Models
- Scroll® Compressor
- Nominal Sizes: 2 – 5 Ton



RPWL Commercial Classic® Series

- Efficiencies up to 11 SEER
- 3 Phase Models
- Scroll® Compressor
- Nominal Sizes: 7.5 & 10 Ton

COMMERCIAL SPLIT CONDENSING UNIT



13AJN Commercial Classic® Series

- Efficiencies up to 11.2 SEER
- 3 Phase Models
- Scroll® Compressor
- Nominal Sizes: 3 – 5 Ton



RANL Classic® Series

- Efficiencies up to 14.50 SEER/12.50 EER
- 3 Phase Models
- Scroll® Compressor
- Nominal Sizes: 3 – 5 Ton

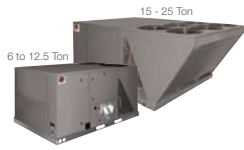


RAWL Commercial Classic® Series

- Efficiencies up to 11.2 SEER
- 3 Phase Models
- Scroll® Compressor
- Nominal Sizes: 6.5, 7.5, 10, 12.5, 15 & 20 Ton



COMMERCIAL PRODUCT GUIDE



- RKNL-B
Commercial
Classic® Series**
- 3-Phase Electro Mech. Models
 - Scroll® Compressor
 - Nominal Sizes: 6, 7.5, 8.5, 10, 12.5, 15, 17.5, 20 & 25 Ton



- CLEARControl™
RKNL-C/-G/-H
Commercial Series - Reheat Models**
- 3-Phase DDC Models with Scroll® Compressor
 - Nominal Sizes: -C Models: (6, 7.5, 8.5, 10, 12.5, 15, 17.5, 20 & 25 Ton) -G Models: (3-5, 7.5, 10, 12.5, 15, 20 & 25 Ton) -H Models: (7.5, 8.5, 10, 12.5, 15, 20 & 25 Ton)
 - RKNL-G: Hot Gas Reheat models & features VFD Technology on 7.5 Ton & above
 - RKNL-H: Includes VFD Technology



- CLEARControl™
RKRL-C/H
Commercial Prestige Series™**
- 3-Phase DDC Models
 - Scroll® Compressor
 - Nominal Sizes: 7.5 - 10, 15 - 20 Ton
 - RKRL-H: Includes VFD Technology



- RKKL
Commercial Value Series**
- 3-Phase Electro Mech. Models
 - Efficiencies up to 11.2 EER
 - Scroll® Compressor
 - Nominal Sizes: 6, 7.5, 10, 12.5, 15 & 20 Ton

PACKAGE DUAL FUEL



- RQPW (14 SEER)
Commercial Classic® Series**
- 1 Phase Models
 - Dual Fuel
 - Scroll® Compressor
 - X-13 Motor
 - Nominal Sizes: 2 - 4 Ton



- CLEARControl™
RLNN-A/-C (13 SEER)
Commercial Classic® Series**
- 1 & 3 Phase -A Electro Mech. Models
 - -C 3 Phase DDC Models
 - Scroll® Compressor
 - Nominal Sizes: 3, 4, 5 Ton



- RLNL-B
Commercial Classic® Series**
- 3-Phase Electro Mech. Models
 - Scroll® Compressor
 - Nominal Sizes: 6, 7.5, 8.5, 10, 12.5, 15, 17.5, 20 & 25 Ton



- CLEARControl™
RLNL-C/-G/-H
Commercial Classic® Series**
- 3-Phase DDC Models with Scroll® Compressor
 - Nominal Sizes: -C Models: (6, 7.5, 8.5, 10, 12.5, 15, 17.5, 20 & 25 Ton) -G Models: (3-5, 7.5, 10, 12.5, 15, 20 & 25 Ton) -H Models: (7.5, 8.5, 10, 12.5, 15, 20 & 25 Ton)
 - RLNL-G: Hot Gas Reheat models & features VFD Technology on 7.5 Ton & above
 - RLNL-H: Includes VFD Technology



- CLEARControl™
RLRL-C/H
Commercial Prestige Series™**
- 3-Phase DDC Models
 - Scroll® Compressor
 - Nominal Sizes: 7.5, 10, 15 & 20 Ton
 - RLRL-H: Includes VFD Technology



- RLKL
Commercial Value Series**
- 3-Phase Electro Mech. Models
 - Efficiencies up to 11.2 EER
 - Scroll® Compressor
 - Nominal Sizes: 6, 7.5, 10, 12.5, 15 & 20 Ton

COMMERCIAL SPLIT AIR HANDLERS



- RHGL
Commercial Classic® Series**
- 3 Phase Models
 - Cooling Operation Only
 - Nominal Sizes: 7.5, 10, 15 & 20 Ton

- RHGM
Commercial Classic® Series**
- 3 Phase Models
 - Cooling & Heat Pump Operation Only
 - Nominal Sizes: 7.5 & 10 Ton



- RJPL-A (14 SEER)
Commercial Classic® Series**
- 1 & 3 Phase Electro Mech. Models
 - Scroll® Compressor
 - Nominal Sizes: 3 - 5 Ton



- CLEARControl™
RJNL-C
Commercial Classic® Series**
- 3 Phase DDC Models
 - Efficiencies up to 11 EER (6 Ton only)
 - Scroll® Compressor
 - Nominal Sizes: 3 - 5, 6, 7.5 & 10 Ton



- RJNL-A/-B
Commercial Classic® Series**
- 3 Phase Electro Mech. Models
 - Scroll® Compressor
 - Nominal Sizes: 3 - 6 Ton (RJNL-A) 7.5, 10 & 15 Ton (RJNL-B)
 - Efficiencies up to 11 EER (6 Ton only)

Commercial Series

Limited Warranty* Information:

- Refer to applicable manufacturer product warranty card for specific details.
- Compressor - 5 Years (Commercial Applications)
- Parts - 1 Year (Commercial Applications)
- Stainless Steel Heat Exchanger - 20 Years (Commercial Applications)
- Standard Heat Exchanger - 10 Years (Commercial Applications)

*For the residential application warranty terms, refer to applicable manufacturer product warranty card.

Notes: ENERGY STAR® compliant in certain matched systems. See applicable specification sheets on Rheem.com for further details. Proper sizing and installation of equipment is critical to achieve optimal performance. Split system air conditioners and heat pumps must be matched with appropriate coil components to meet ENERGY STAR® requirements. Ask your contractor for details or visit www.energystar.gov.

COMMERCIAL PRODUCT FEATURES AND OPTIONS

STANDARD FEATURES

- Meets or exceeds ASHRAE 90.1 2010 federal minimum efficiency levels
- R-410A Refrigerant
- TXV refrigerant control*
- Enhanced access with 1/4 turn fasteners and hinges*
- Removable drain pan*
- High & low pressure control
- Filter driers
- Easy low voltage connection
- Molded compressor plug
- Enhanced wiring harnesses
- Slide-out indoor fan assembly*
- Cooling operation to 125° F
- Smoke detector wiring*
- Improved IFC (Integrated Furnace Control)
- Thru-the-curb gas piping*
- Dependable outdoor fan shaft down design
- Evaporator is intertwined face split
- Sturdy cabinet
- Scroll compressor technology in all models
- Powder coat paint finish
- Convertible airflow
- External gauge ports
- Optional louvered hail guards
- Factory charged, wired & run-tested
- Drawn basepan
- Commercial grade base rails

*Not standard on all models. See model specifications sheet for details.

FACTORY & FIELD OPTIONS



HAIL GUARD

- Provides coil protection from hail or vandalism



ECONOMIZER

- Single Enthalpy (Outdoor)
- Optional Field-Installed Power Exhaust
- Optional Field-Installed Carbon Dioxide Detector
- Optional Field-Installed Dual Enthalpy



STAINLESS STEEL HEAT EXCHANGER

- Limited Lifetime Warranty in Residential Applications
- 20-Year Warranty in Commercial Applications



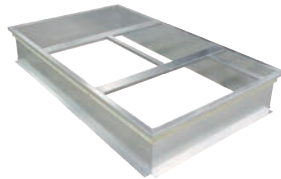
UNWIRED CONVENIENCE OUTLET

- 120 VAC
- 15 amp GFCI



UNFUSED SERVICE DISCONNECT

- Provides convenient disconnect access



ROOF CURB

RXSG

- 2-5 TON

RXKG

- 3-25 TON

Roof Curb Adapters:

RXXR



COMMERCIAL COILS

RCCL

- Dual Furnace Coils
- Nominal Sizes: 6.5, 7.5 & 10 Ton

Additional Options

- High & Low Pressure Switch Kit
- Low Ambient Control Kit
- Freeze-Stat Kit

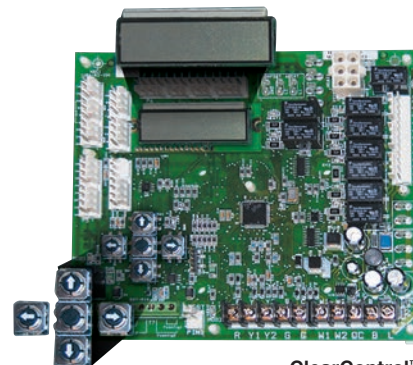




ClearControl™

ClearControl™ is a Rheem exclusive Direct Digital Control (DDC) that constantly monitors multiple parameters, providing industry leading diagnostics and communication.

- Two line, 16 character LCD
- Keypad driven menu
- Compatible with most 24 volt thermostats
- BAS compatible (Modbus, BACnet or LonWorks)
- Unmatched factory sensors, unprecedented diagnostics



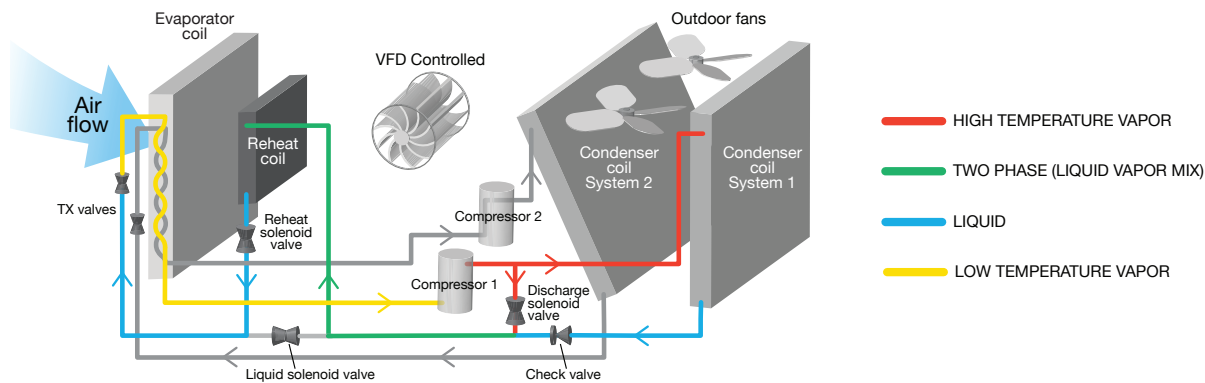
ClearControl™

HumidiDry™

The HumidiDry™ Series from Rheem keeps humidity levels constant, even when there's little or no demand for air conditioning, giving business owners independent control of temperature and humidity.

- Delivers dry, neutral air in reheat mode
- Available on package gas electric units and package air conditioners in 3 to 25 ton models
- Variable Frequency Drive (VFD) Technology standard on 7½ ton and above models
- Easy installation and service with ClearControl™

DEHUMIDIFICATION MODE





VFD TECHNOLOGY

Rheem *Commercial Series™* Package Units, featuring VFD Technology integrate variable frequency drive operation for substantial energy savings and improved comfort.

- Reduces by up to 85%, the cost of meeting building ventilation requirements by up to 85%
- Improves part load efficiency (IEER) up to 51%
- Removes twice as much moisture than standard package units for lower relative humidity and increased comfort
- Meets ASHRAE 90.1-2010 and California Title 24 requirements
- Available on 7 1/2 - 25 ton package gas electric units and package air conditioners



VFD TECHNOLOGY

AIR AND WATER WORKING TOGETHER™

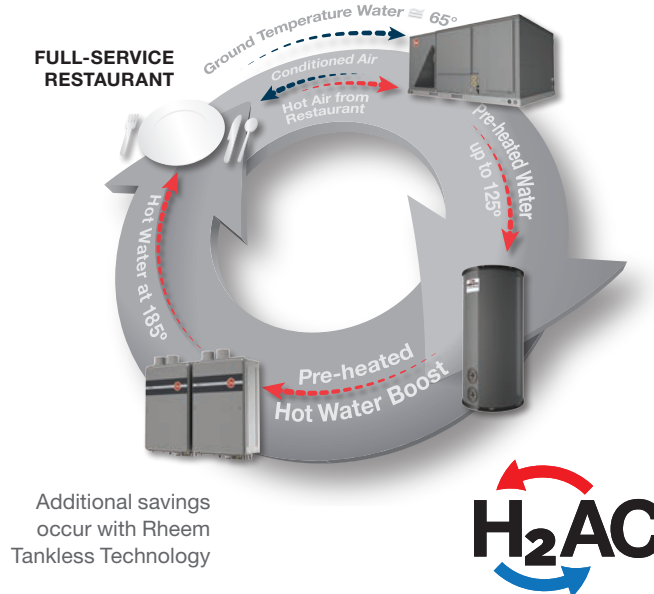
Introducing the New Rheem H₂AC™ Rooftop Unit featuring *eSync™ Integration Technology*

The new Integrated Air and Water System is the first and only system of its kind, and it's available exclusively from Rheem. Rheem's proprietary *eSync Integration Technology* brings a new level of savings and efficiency to full-service restaurants by using heat that is normally rejected into the atmosphere to heat water for the restaurant. With the highly efficient Integrated Air and Water System, you will experience:

- Lowest cooling and water heating operational costs available
- Up to 50% savings on your annual water heating costs
- Up to 20% savings on your annual energy costs
- Less than a two-year payback*
- Reduced energy footprint
- A system that contributes to your environmental initiatives
- A one-source provider for air and water solutions
- Trusted Rheem quality and reliability

*Payback varies based on region, climate, usage and utility rates

Where savings occur with eSync Integration Technology



INTEGRATED AIR & WATER

COMMERCIAL PRODUCT SPECIFICATIONS

PACKAGE GAS ELECTRIC

MODEL	COOLING DATA						HEAT INPUT		PHYSICAL DATA	
	NOMINAL TONNAGE	GROSS CAPACITY (BTUH)	AHRI RATED NET CAPACITY (BTUH)	NOMINAL CFM/AHRI (CFM)	EER	SEER/IEER	STANDARD: (BTUH)	HIGH: (BTUH)	DIMENSIONS H X W X L (INCHES)	SHIPPING WEIGHT (LBS)
RKKL-B072	6.0	73,000	70,000	2400/2050	11.2	N/A	100,000	135,000	35 x 48 x 82	705
RKKL-B090	7.5	87,000	84,000	2800/2925	11.2	12.10	75,000/150,000	112,000/225,000	44 x 59 x 94	882
RKKL-B120	10.0	125,000	119,000	4000/3600	11.2	12.20	75,000/150,000	112,000/225,000	44 x 59 x 94	984
RKKL-B151	12.5	156,000	150,000	5000/4225	11.1	11.90	75,000/150,000	126,000/252,000	44 x 59 x 94	1230
RKKL-B180	15.0	174,000	170,000	6000/5500	10.9	11.10	125,000/250,000	175,000/400,000	57 x 86 x 125	1799
RKKL-B240	20.0	250,000	240,000	8000/7825	10.5	10.50	150,000/300,000	200,000/400,000	57 x 86 x 125	2011
RKNN-(A,C)036	3.0	36,800	34,600	1200/1250	11.5	13.00/-	80,000	120,000	35 x 46.5 x 76	514-532
RKNN-(A,C)048	4.0	48,000	46,000	1600/1500	11.5	13.00/-	80,000	135,000	35 x 46.5 x 76	538-567
RKNN-(A,C)060	5.0	60,000	58,000	2000/1850	11.0	13.00/-	100,000	135,000	35 x 46.5 x 76	557-579
RKNL-(B,C)073	6.0	75,000	72,000	2400/2325	11.2/11.0	-/11.8	75,000/150,000	75,000/150,000	44 x 59 x 94	938
RKNL-(B,C,H)090 *	7.5	93,000	90,000	3000/2775	11.2	-/11.9/14.5*	75,000/150,000	112,500/225,000	44 x 59 x 94	1054
RKNL-(B,C,H)102 *	8.5	101,000	97,000	3200/3200	11.2	-/12/14.4*	75,000/150,000	112,500/225,000	44 x 59 x 94	1096
RKNL-(B,C,H)120 *	10.0	123,000	118,000	4000/3750	11.2	-/12/11.9/14.4*	75,000/150,000	112,500/225,000	44 x 59 x 94	1149
RKNL-(B,C,H)151 *	12.5	146,000	140,000	5000/4225	10.0	-/10.8/13.5*	75,000/150,000	126,000/252,000	44 x 59 x 94	1267
RKNL-(B,C,H)180 *	15.0	188,000	182,000	6000/5900	11.1	-/12.4/14.4*	125,000/250,000	175,000/350,000	57 x 86 x 152	2084-2141
RKNL-(B,C,H)210 *	17.5	212,000	204,000	7000/7025	11.6	-/12.6/14.5*	125,000/250,000	175,000/350,000	57 x 86 x 152	2272-2329
RKNL-(B,C,H)240 *	20.0	244,000	234,000	8000/7725	11.1	-/11.4/14.8*	150,000/300,000	200,000/400,000	57 x 86 x 152	2389-2460
RKNL-(B,C,H)300 *	25.0	312,000	294,000	10,000/9475	10.0	-/10.1/13.4*	150,000/300,000	200,000/400,000	57 x 86 x 152	2488-2533
RKNL-G036	3.0	36,800	35,400	1200/1200	11.4	13.00/-	80,000	120,000	35 x 48 x 76	594-606
RKNL-G048	4.0	50,000	48,000	1600/1600	11.5	13.00/-	80,000	135,000	35 x 48 x 76	631-648
RKNL-G060	5.0	61,000	59,000	2000/1900	11.1	13.00/-	100,000	135,000	35 x 48 x 76	641-648
RKNL-G090	7.5	93,000	90,000	3000/2775	11.2	-/14.7	75,000/150,000	112,500/225,000	44 x 59 x 94	1104-1140
RKNL-G120	10.0	123,000	118,000	4000/3750	11.2	-/14.4	75,000/150,000	112,500/225,000	44 x 59 x 94	1199-1235
RKNL-G 151	12.5	148,000	140,000	5000/4250	11.0	-/14	75,000/150,000	126,000/252,000	57 x 86 x 152	1315-1356
RKNL-G180	15.0	188,000	182,000	6000/5900	11.1	-/14.8	125,000/250,000	175,000/350,000	57 x 86 x 152	2164-2206
RKNL-G240	20.0	244,000	234,000	8000/7725	11.1	-/14.8	150,000/300,000	200,000/400,000	57 x 86 x 152	2495-2547
RKNL-G300	25.0	304,000	288,000	10,000/9475	10.0	-/14.1	150,000/300,000	200,000/400,000	57 x 86 x 152	2594-2619
RKPN-(A,C)036	3.0	36,200	34,600	1200/1250	11.5	14.00/-	80,000	120,000	35 x 46.5 x 76	514-532
RKPN-(A,C)048	4.0	48,000	46,000	1600/1500	11.5	14.00/-	80,000	135,000	35 x 46.5 x 76	538-567
RKPN-(A,C)060	5.0	60,000	58,500	2000/1800	11.5	14.00/-	100,000	135,000	35 x 46.5 x 76	557-579
RKQN-(A,C)036	3.0	36,200	35,400	1200/1250	12.5	15/-	80,000	120,000	35 x 46.5 x 76	514-532
RKQN-(A,C)048	4.0	48,000	46,500	1600/1600	12.5	15/-	80,000	135,000	35 x 46.5 x 76	538-567
RKQN-(A,C)060	5.0	59,000	49,000/57,000**	1375/1800	19.9/11.5**	15/-	100,000	135,000	35 x 46.5 x 76	557-579
RKRL-(C,H)090	7.5	95,000	92,000	3,000/2,600	13.0	-/14/15.8	75,000/150,000	112,500/225,000	44 x 59 x 94	1,093
RKRL-(C,H)120	10	124,000	120,000	4,000/3,575	12.5	-/13.8/15.6	75,000/150,000	112,500/225,000	50 x 59 x 94	1,242
RKRL-(C,H)180	15	178,000	174,000	6,000/5,500	12.2	-/13.2/15	125,000/250,000	175,000/350,000	57 x 86 x 152	2,147
RKRL-(C,H)240	20	240,000	232,000	8,000/7,375	12.0	-/12.8/14.6	150,000/300,000	200,000/400,000	57 x 86 x 152	2,389

*H-VFD

**1st stage/2nd stage

COMMERCIAL PRODUCT SPECIFICATIONS

PACKAGE AIR CONDITIONERS

MODEL	COOLING DATA						HEAT INPUT		PHYSICAL DATA	
	NOMINAL TONNAGE	GROSS CAPACITY (BTUH)	AHRI RATED NET CAPACITY (BTUH)	NOMINAL CFM/ AHRI (CFM)	EER	SEER/IEER	LOW	HIGH	DIMENSIONS H X W X L (INCHES)	SHIPPING WEIGHT (LBS)
RLKL-B072	6	73,000	70,000	2400/2050	11.2	-/11.7	6	24	35 x 48 x 82	576
RLKL-B090	7.5	87,000	84,000	2800/2925	11.2	-/12.1	10	41	44 x 59 x 94	919
RLKL-B120	10	123,000	119,000	4000/3600	11.2	-/12.2	10	50	44 x 59 x 94	1021-1267
RLKL-B151	12.5	146,000	140,000	5000/4225	11.0	-/12.73	10	50	44 x 59 x 94	1267-1275
RLKL-B180	15	174,000	170,000	6000/5500	11.0	-/11.1	20	75	58 x 86 x 125	1794-2047
RLKL-B240	20	250,000	240,000	8000/7825	10.5	10.5	20	75	58 x 86 x 125	2009-2047
RLNN-(A,C)036	3.0	36,200	34,600	1200/1250	11.5	13/-	6	20	35 x 46.5 x 76	460-503
RLNN-(A,C)048	4.0	48,000	46,000	1600/1500	11.5	13/-	6	20	35 x 46.5 x 76	484-510
RLNN-(A,C)060	5.0	60,500	58,000	2000/1850	11.0	13/-	6	20	35 x 46.5 x 76	489-515
RLNL-(B,C)073	6.0	76,000	73,000	2400/2375	11.5	-/11.8	10	50	44 x 59 x 94	938
RLNL-(B,C,H)090*	7.5	93,000	90,000	3000/2775	11.2	-/11.9/14.5*	10	50	44 x 59 x 94	1054-1062
RLNL-(B,C,H)102*	8.5	101,000	97,000	3200/3200	11.2	-/12/14.4*	10	50	44 x 59 x 94	1096-1104
RLNL-(B,C,H)120*	10.0	123,000	118,000	4000/3750	11.2	-/11.9/14.6*	10	50	44 x 59 x 94	1096-1157
RLNL-(B,C,H)151*	12.5	156,000	148,000	5000/4400	11.0	-/12.4/14.4*	10	50	44 x 59 x 94	1267-1275
RLNL-(B,C,H)180*	15.0	188,000	182,000	6000/5900	11.1	-/12.4/14.4*	20	75	57 x 86 x 152	1926-2087
RLNL-(B,C,H)210*	17.5	212,000	204,000	7000/7025	11.6	-/12.6/14.5*	20	75	57 x 86 x 152	2140-2169
RLNL-(B,C,H)240*	20.0	244,000	234,000	8000/7725	11.1	-/11.4,14.8*	20	75	57 x 86 x 152	2251-2427
RLNL-(B,C,H)300*	25.0	312,000	294,000	10,000/9475	10.0	-/10.1, 13.4*	20	75	57 x 86 x 152	2350-2499
RLNL-G036	3.0	36,800	35,400	1200/1200	11.4	13/-	10	20	35 x 48 x 76	558
RLNL-G048	4.0	50,000	48,000	1600/1600	11.5	13/-	10	20	35 x 48 x 76	595
RLNL-G060	5.0	61,000	59,000	2000/1900	11.1	13/-	10	20	35 x 48 x 76	605
RLNL-G090	7.5	93,000	90,000	3000/2775	11.2	-/14.7	10	50	44 x 59 x 94	1086-1094
RLNL-G120	10.0	123,000	118,000	4000/3750	11.2	-/14.4	10	50	44 x 59 x 94	1181-1189
RLNL-G151	12.5	148,000	140,000	5000/4250	11.0	-/14	10	50	44 x 59 x 94	1315-1356
RLNL-G180	15.0	188,000	182,000	6000/5900	11.1	-/14.8	20	75	57 x 86 x 152	2032-2061
RLNL-G240	20.0	244,000	234,000	8000/7725	11.1	-/14.8	20	75	57 x 86 x 152	2357-2395
RLNL-G300	25.0	304,000	288,000	10,000/9475	10.0	-/14.1	20	75	57 x 86 x 152	2356-2467
RLPN-(A,C)036	3.0	36,200	34,600	1200/1250	11.5	14/-	10	20	35 x 46.5 x 76	460-503
RLPN-(A,C)048	4.0	48,000	46,000	1600/1500	11.5	14/-	10	20	35 x 46.5 x 76	484-510
RLPN-(A,C)060	5.0	60,000	58,500	2000/1800	11.5	14/-	10	20	35 x 46.5 x 76	489-515
RLQN-(A,C)036	3.0	36,200	35,400	1200/1250	12.5	15/-	6	20	35 x 46.5 x 76	460-503
RLQN-(A,C)048	4.0	48,000	46,500	1600/1600	12.5	15/-	6	20	35 x 46.5 x 76	484-510
RLQN-(A,C)060	5.0	59,000	49,000/57,000**	1375/1800**	19.9/11.5**	15/-	6	20	35 x 46.5 x 76	489-515
RLRL-(C,H)090	7.5	95,000	92,000	3,000/2,600	13.0	14/15.8	10	20	44 x 59 x 94	1,057
RLRL-(C,H)120	10	124,000	120,000	4,000/3,575	12.5	13.8/15.6	10	20	50 x 59 x 94	1,206
RLRL-(C,H)180	15	178,000	174,000	6,000/5,500	12.2	13/2/15	20	75	57 x 86 x 152	2,009
RLRL-(C,H)240	20	240,000	232,000	8,000/7,375	12.2	13/2/15	20	75	57 x 86 x 152	2,251

*H-VFD

**1st stage/2nd stage



COMMERCIAL PRODUCT SPECIFICATIONS

PACKAGE HEAT PUMPS

COOLING DATA							HEAT INPUT				PHYSICAL DATA	
MODEL	NOMINAL TONNAGE	GROSS CAPACITY (BTUH)	AHRI RATED NET CAPACITY (BTUH)	NOMINAL CFM/AHRI (CFM)	EER	SEER/IEER	47 Capacity	COP 47 Efficiency	17 Capacity	COP 17 Efficiency	DIMENSIONS H X W X L (INCHES)	SHIPPING WEIGHT (LBS)
RJNL-(A,C)036	3.0	36,200	36,200	1200/1200	11.5	13.00	34,400	3.4	19,600	2.1	35 x 48 x 76	532
RJNL-(A,C)042	3.5	42,000	42,000	1400/1400	11.5	13.00	41,000	3.5	24,400	2.3	35 x 48 x 76	532-536
RJNL-(A,C)048	4.0	47,500	47,500	1600/1600	11.2	13.00	49,000	3.6	29,000	2.3	35 x 48 x 76	550
RJNL-(A,C)060	5.0	59,000	59,000	2000/2000	11.5	13.00	60,000	3.6	35,800	2.4	35 x 48 x 76	580
RJNL-(B,C)072	6.0	70,000	70,000	2400/2125	11.0	-/11.9	68,000	3.4	14,000	2.3	35 x 48 x 76	635
RJNL-(B,C)090	7.5	98,000	94,000	3000/2925	11.0	-/11.9	87,000	3.4	69,000	2.3	44 x 59 x 94	1265-1273
RJNL-(B,C)120	10	125,000	120,000	4000/4000	11.0	-/11.00	109,000	3.4	69,000	2.3	50 x 59 x 94	1265-1273
RJNL-(B)180	15	182,000	176,000	6000/6025	10.7	-/11.5	170,000	3.4	104,000	2.4	57 x 86 x 152	1926-2087
RJPL-(A,C)036	3.0	37,800	36,800	1200/1200	12.0	14.00	33,600	3.8	19,400	2.2	35 x 48 x 76	532
RJPL-(A,C)042	3.5	44,000	42,000	1400/1400	11.6	14.00	40,000	3.6	24,200	2.4	35 x 48 x 76	536
RJPL-(A,C)048	4.0	49,000	47,500	1600/1600	11.6	14.00	44,000	3.8	29,800	2.4	35 x 48 x 76	550
RJPL-(A,C)060	5.0	61,000	59,500	2000/1850	11.7	14.00	59,500	3.6	36,400	2.2	35 x 48 x 76	580

SPLIT SYSTEMS: CONDENSING UNITS & HEAT PUMPS

COOLING DATA							HEAT INPUT				PHYSICAL DATA	
MODEL	NOMINAL TONNAGE	GROSS CAPACITY (BTUH)	AHRI RATED NET CAPACITY (BTUH)	NOMINAL CFM/AHRI (CFM)	EER	SEER/IEER	47 Capacity	COP 47 Efficiency	17 Capacity	COP 17 Efficiency	DIMENSIONS H X W X L (INCHES)	SHIPPING WEIGHT (LBS)
13PJL-036	3.0	-	34,000	1200	11.0	13.00	-	-	-	-	27 x 32 x 32	194
13A(-)N-036	3.0	-	34,200	1000	11.0	13.00	-	-	-	-	24 x 28 x 28	157
13A(-)N-042	3.5	-	39,500	1375	10.5	13.00	-	-	-	-	28 x 32 x 32	157
13A(-)N-048	4.0	-	47,500	1575	10.5	13.00	-	-	-	-	28 x 32 x 32	192
13A(-)N-060	5.0	-	56,500	1525	10.5	13.00	-	-	-	-	36 x 32 x 32	234
RANL-037	3.0	-	37,800*	1175*	11.1	13.00/-*	-	-	-	-	25 x 44 x 32	215
RANL-043	3.5	-	42,500*	1400*	11.8	13.00/-*	-	-	-	-	25 x 44 x 32	215
RANL-049	4.0	-	48,000*	1475*	11.9	13.00/-*	-	-	-	-	33 x 44 x 32	240
RANL-060	5.0	-	61,000*	1800*	11.1	13.00/-*	-	-	-	-	33 x 44 x 32	260
RAWL-078	6.5	-	77,000	2600	11.2	-	-	-	-	-	33 x 31 x 43	314
RAWL-090	7.5	-	92,000	2800	11.4	-	-	-	-	-	33 x 31 x 43	341
RAWL-120	10.0	-	118,000	3800	11.2	-	-	-	-	-	45 x 38 x 61	541
RAWL-125	10.0	-	116,000	3800	11.2	-	-	-	-	-	45 x 38 x 61	626
RAWL-150	12.5	-	146,000	5000	11.1	-	-	-	-	-	45 x 38 x 61	690
RAWL-180	15.0	-	178,000	5100	11.0	-	-	-	-	-	45 x 38 x 61	786
RAWL-240	20.0	-	244,000	6900	10.0	-	-	-	-	-	45 x 38 x 61	992
13PJL-042	3.5	-	41,000	1400	11.0	13.00	-	-	-	-	35 x 32 x 32	219
13PJL-048	4.0	-	46,500	1600	10.5	13.00	-	-	-	-	35 x 32 x 32	217
13PJL-060	5.0	-	58,000	1775	10.9	13.00	-	-	-	-	35 x 32 x 32	220
RPNL-037	3.0	-	35,200	1175	11.0	13.00	37,200	3.58	23,800	2.46	33 x 32 x 44	257
RPNL-043	3.5	-	42,500	1400	11.0	13.00	43,500	3.68	28,600	2.64	29 x 32 x 44	267
RPNL-049	4.0	-	46,500	1600	10.5	13.00	47,500	3.64	31,600	2.66	29 x 32 x 44	256
RPNL-060	5.0	-	60,500	1800	11.0	13.00	58,500	3.66	38,000	2.72	33 x 32 x 44	270
RPWL-090	7.5	-	86,000	3000	30.0	-	90,000	3.30	55,000	2.20	49 x 31 x 42	448
RPWL-120	10.0	-	116,000	3750	37.5	-	120,000	3.30	68,000	2.20	45 x 38 x 74	686

*Based on Highest Sales Volume tested combination required by DOE test procedures.

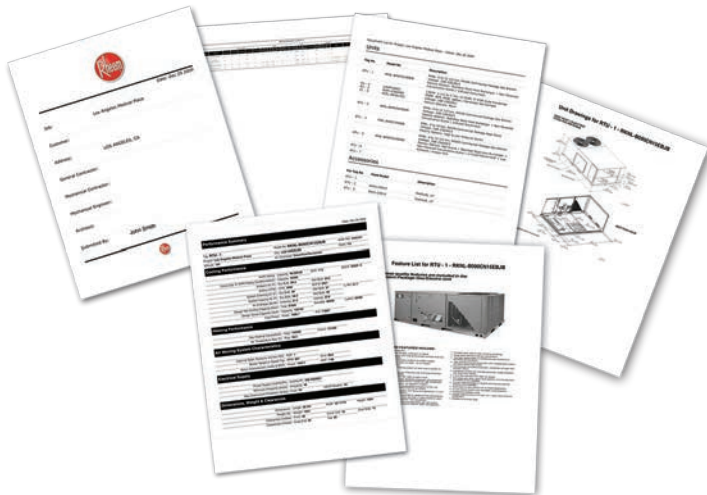
RHEEM COMMERCIAL SALES TOOLS

HVAC SYSTEM DESIGN AT YOUR FINGER TIPS

A web-based software tool that enables the HVAC Design Professional to specify, select and document Rheem Commercial Series™ equipment for new construction or replacement HVAC projects.

Features

- Easy-to-Use, Web-based Software
- Easy-to-Navigate Menu
- Complete, Professional, Customized Submittal Packages in Minutes: Cover Sheet, Performance Summary, Detailed Drawings, Features & Benefits Summary, Equipment Schedule and Equipment List
- Create, Save and Access Your Projects 24/7



PROSTOCK®

Our national chain of Rheem Replacement Parts stores, PROSTOCK, are conveniently located to ensure parts availability at all times without the hassles.

CONVENIENT COMMERCIAL FINANCING IS NOW AVAILABLE! *

Rheem Commercial HVAC Equipment Financing allows the full cost of HVAC projects in commercial applications to be bundled into one convenient, affordable monthly payment. Administered by GreatAmerica™ Financial Services, every aspect of the HVAC project, including equipment, installation, labor and extended warranty, are eligible to be financed up to 60 months with no down payment or security deposit! All contractors in good standing qualify to use the program. **To learn more, visit us online today at www.greatamerica.com/Rheem.**

PAYMENT CALCULATOR

Total Invoice Amount	\$5,000 - \$14,999	\$15,000 - \$49,999	\$50,000 - \$99,999
12 months	.09168	.09073	.09002
24 months	.04837	.04778	.04766
36 months	.03298	.03238	.03215
48 months	.02597	.02536	.02512
60 months	.02174	.02120	.02100

Example: \$13,000 Invoice

1. Select the invoice range in the top row (\$5,000 - \$14,999)
2. Select any term (for 36 months, it's .03298)
3. Multiply \$13,000 x .03298 = \$428.74/month for 36 months

*Available in the U.S. only

PROTECTION PLUS EXTENDED SERVICE PLAN

With our Protection Plus® extended Service agreement program, your customers are protected from unexpected, unbudgeted repairs after the limited warranty expires. Protection Plus limited warranty can also be extended.

INTERNATIONAL STANDARDS ORGANIZATION (ISO) CERTIFICATION

Certification means that Rheem has passed a series of independent audits proving it maintains a modern quality control system to consistently provide quality products. These audits assess all of a company's systems that affect quality. All Rheem manufacturing facilities have achieved the prestigious ISO 2001 Certification. Rheem was the first HVAC manufacturer in North America to earn this distinction in all of its manufacturing facilities.



Rheem Commercial Series™
Models Meet & Achieve
ASHRAE Standard 90.1

In keeping with its policy of continuous progress and product improvement, Rheem reserves the right to make changes without notice.

Rheem USA • P.O. Box 17010
Fort Smith, Arkansas 72917

Rheem Canada Ltd./Ltée • 125 Edgeware Road, Unit 1
Brampton, Ontario L6Y 0P5

Rheem.com/Commercial

Printed in the USA • 10/13 • WP

Form No. M11-1809