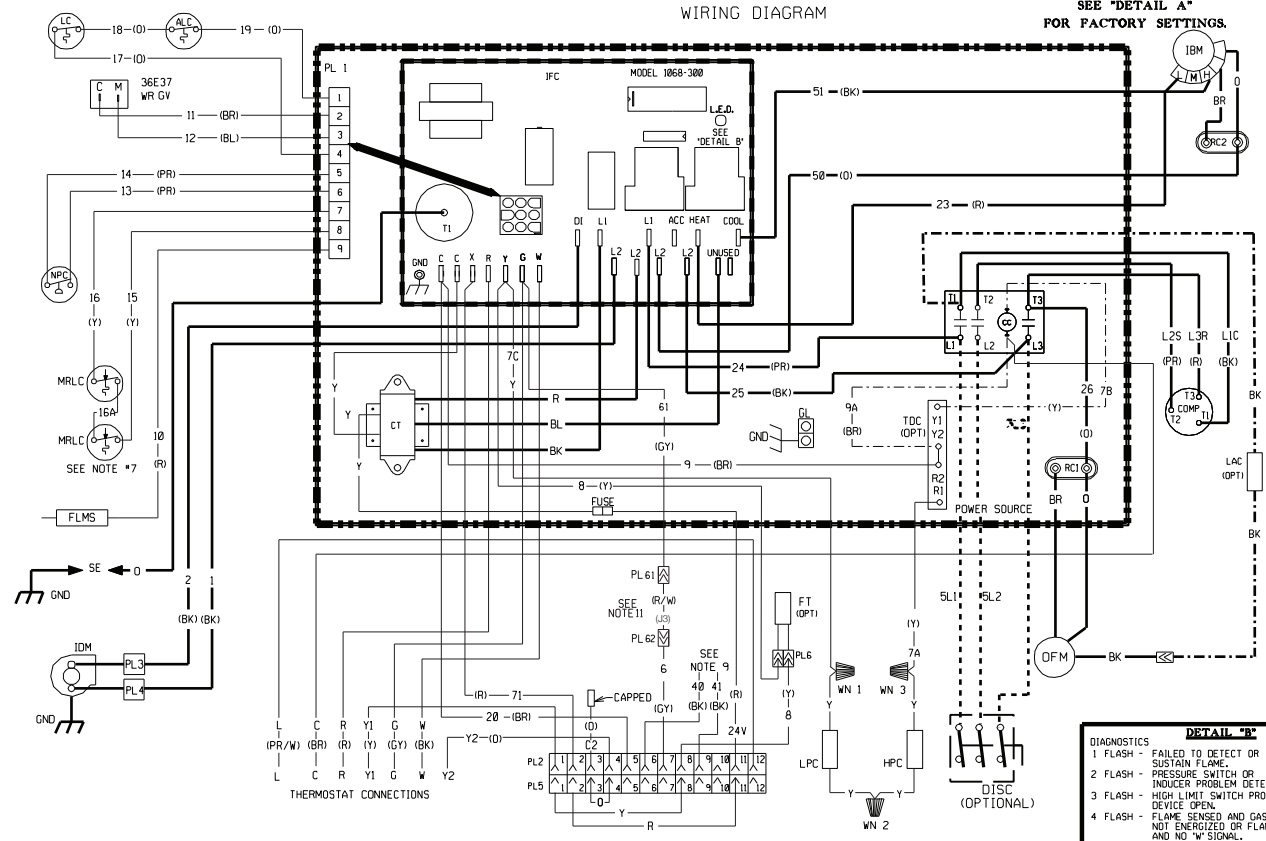


WIRING DIAGRAM

SEE "DETAIL A" FOR FACTORY SETTINGS.



- DIAGNOSTICS**
- FLASH - FAILED TO DETECT OR SUSTAIN FLAME.
 - FLASH - PRESSURE SWITCH OR INDUCER PROBLEM DETECTED.
 - FLASH - HIGH LIMIT SWITCH PROTECTION DEVICE OPEN.
 - FLASH - FLAME SENSED AND GAS VALVE NOT ENERGIZED OR FLAME SENSED AND NO "W" SIGNAL.
 - FLASH - FLAME ROLL OUT SWITCH OPEN.

SAME SPEED FOR BOTH COOLING & HEATING (HIGH SPEED SHOWN)

HEAT	COOL	ACC	UNUSED	IFC
0	0	51-(BK)	23-(R)	

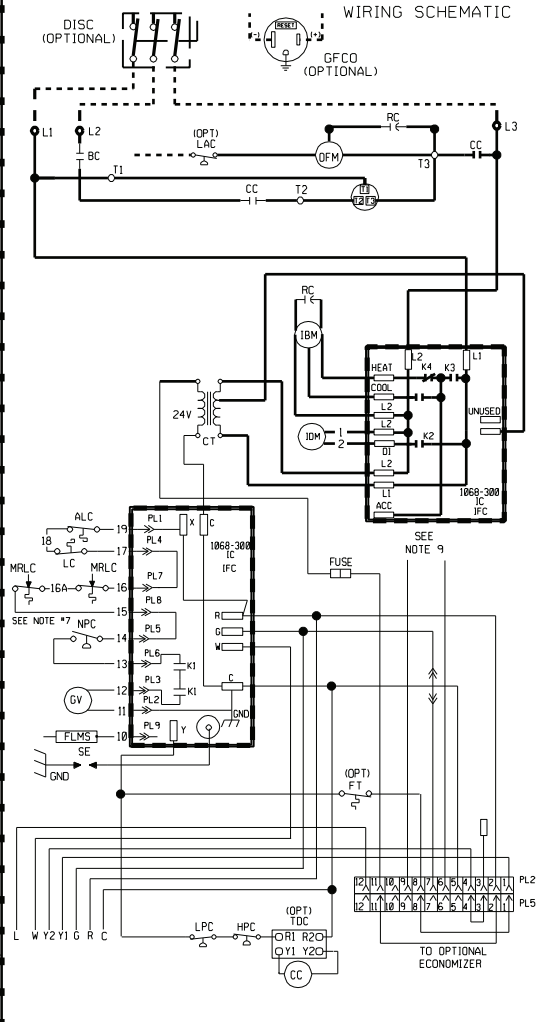
DETAIL "A"

MODEL	COOL	HEAT	FACTORY SET BLOWER SPEED
3 TON W/120K HEAT	LOW	MED.	
3.5 TON W/80K HEAT	MED.	LOW	
4 TON W/80K HEAT	MED.	LOW	
4 TON W/135K HEAT	MED.	HIGH	
5 TON W/100K HEAT	MED.	LOW	
5 TON W/135K HEAT	MED.	HIGH	

DIFFERENT SPEEDS FOR COOLING & HEATING (MED. HEAT - HIGH COOL SHOWN)

HEAT	COOL	UNUSED
0	0	UNUSED
0	0	ACC
(BK)-51	0	COOL
(R)-23	0	HEAT
		IFC

WIRING SCHEMATIC



WIRING INFORMATION

LINE VOLTAGE _____
 -FACTORY STANDARD _____
 -FACTORY OPTION - - - - -
 -FIELD INSTALLED - - - - -

LOW VOLTAGE _____
 -FACTORY STANDARD - - - - -
 -FIELD INSTALLED - - - - -

REPLACEMENT WIRE
 -MUST BE THE SAME SIZE AND TYPE OF INSULATION AS ORIGINAL (105C. MIN.)

WARNING
 -CABINET MUST BE PERMANENTLY GROUNDED AND CONFORM TO I.E.C., N.E.C., C.E.C., NATIONAL WIRING REGULATIONS, AND LOCAL CODES AS APPLICABLE.

NOTES

- CONNECTORS SUITABLE FOR USE WITH COPPER CONDUCTORS ONLY.
- COMPRESSOR MOTOR THERMALLY PROTECTED. ALL 3 PHASE MODELS ARE PROTECTED UNDER PRIMARY SINGLE PHASE CONDITIONS.
- CONTROL TRANSFORMER PRIMARY LEADS: RED-COMMON, BLUE-208V, BLACK 230V. TRANSFORMER FACTORY WIRED FOR 230 VOLTS. INTERCHANGE BLACK FOR BLUE LEADS FOR 208V OPERATION.
- CONTACTOR FACTORY WIRED. CONNECT FIELD WIRE TO FACTORY SUPPLIED CONTACTOR IN ELECTRICAL BOX.
- LOW VOLTAGE CIRCUIT IS N.E.C. CLASS 2 WITH A CLASS 2 TRANSFORMER. 24V. 50/60 HZ SUPPLIED.
- CONNECT FIELD WIRING IN GROUNDED RAIN TIGHT CONDUIT TO 60 HZ FUSED DISCONNECT.
- ONLY ONE MRLC IS NEEDED ON THE 80,000 INPUT UNIT.
- MOTOR FACTORY WIRED FOR CORRECT SPEED.
- WIRED FROM PL2 (6 & 9) GO TO THE MIXED AIR SENSOR ON THE OPTIONAL ECONOMIZER.
- Y2 IS USED ONLY FOR THE OPTIONAL ECONOMIZER.
- REMOVE JUMPER FOR FIELD INSTALLED OCCUPANCY RELAY.

COMPONENT CODES

- | | | | |
|------|----------------------------------|------|-----------------------------|
| ALC | AUX. LIMIT CONTROL | IDM | INDUCED DRAFT MOTOR |
| CC | COMPRESSOR CONTACTOR | IFC | INTEGRATED FURNACE CONTROL |
| COMP | COMPRESSOR | LAC | LOW AMBIENT COOLING CONTROL |
| CT | CONTROL TRANSFORMER | LC | LIMIT CONTROL |
| DISC | DISCONNECT SWITCH | LPC | LOW PRESSURE CONTROL |
| FLMS | FLAME SENSOR | MRLC | MANUAL RESET LIMIT CONTROL |
| FT | FREEZE STAT | NPC | NEGATIVE PRESSURE CONTROL |
| GFCO | GROUND FAULT CONVENIENCE OUTLET | OFM | OUTDOOR FAN MOTOR |
| GL | GROUND LUG | PL | PLUG |
| GND | GROUND | RC | RUN CAPACITOR |
| GV | GAS VALVE | SD | SMOKE DETECTOR |
| HPC | HIGH PRESSURE CONTROL | SE | SPARK ELECTRODE |
| IBM | INDOOR BLOWER MOTOR DIRECT DRIVE | TDC | TIME DELAY CONTROL |
| | | WN | WIRE NUT |

WIRE COLOR CODE

- | | | |
|--------------|--------------|---------------|
| BK.....BLACK | G.....GREEN | PR.....PURPLE |
| BR.....BROWN | GY.....GRAY | R.....RED |
| BL.....BLUE | O.....ORANGE | W.....WHITE |
| | Y.....YELLOW | |

ELECTRICAL WIRING DIAGRAM

208 / 230, 3 PHASE DIRECT DRIVE

APPROVED:	CHECKED:	ORIGINAL RELEASE NO.:
MODELED BY: MGR	DATE: 2-11-13	R-1058S005
PART NO.: 90-23596-39		REV: 03