



RKNL-G

Parts List
04-October-2014



*This parts list is current as of the above revision date.
See <http://www.rheempartslists.net/92-42800-RKNL-G.pdf> for the current revision.*

Package Gas-Electric - Commercial

Table of Contents

Model Explanation	Page 3
Parts Numbers	
Panels - Miscellaneous 036-060	Page 4
Panels - Miscellaneous 090-151 (1)	Page 5
Panels - Miscellaneous 090-151 (2)	Page 6
Panels - Miscellaneous 180-300 (1)	Page 7
Panels - Miscellaneous 180-300 (2)	Page 8
Electrical Group 036-060	Page 9
Electrical Group 090-151 (1)	Page 10
Electrical Group 090-151 (2)	Page 11
Electrical Group 180-300 (1)	Page 12
Electrical Group 180-300 (2)	Page 13
Fan Group 036-060	Page 14
Fan Group 090-151	Page 15
Fan Group 180-300	Page 16
Blower Group 036-060 (1)	Page 17
Blower Group 036-060 (2)	Page 18
Blower Group 090-151	Page 19
Blower Group 180-300	Page 20
Coil Parts 036-060	Page 21
Coil Parts 090-151	Page 22
Coil Parts 180-300	Page 23
Compressor Group 036-060	Page 24
Compressor Group 090-151	Page 25
Compressor Group 180-300	Page 26
Heat Exchanger-Burner Group 036-060	Page 27
Heat Exchanger-Burner Group 090-151	Page 28
Heat Exchanger-Burner Group 180	Page 29
Heat Exchanger-Burner Group 240	Page 30
Heat Exchanger-Burner Group 300	Page 31
Gas Controls	Page 32
Accessories 036-151	Page 33
Accessories 180-300	Page 34
Orifice Selection Chart	Page 35
Drawings/Photographs	
Exploded View 036-060	Page 36
Top Panel View 036-060	Page 37
Blower Assembly - Belt Drive 036-060	Page 38
Control Box 036-060	Page 39
Blower Motor Mount Assembly - Belt Drive 030-060	Page 40
Coil Group Cut-away View 036-060	Page 41
Evaporator Coil - Filter Parts 036-060	Page 41
Heat Exchanger Assembly 036-060	Page 42
One Piece Burner Assembly 036-060	Page 42
Reheat Circuit Assembly 036-060	Page 43
Compressor - Refrigeration Group 036-060	Page 44
TXV Identification Guide	Page 45
Exploded View 090-151	Page 46
Exterior - Front 090-151	Page 47
Exterior - Back 090-151	Page 47
Filter-Coil Assembly 090-151	Page 48
Condenser Coil Assembly 090-151	Page 48
Heat Exchanger Assembly 090-151	Page 49
Front Panel Brackets 090-151	Page 49
Filter Frame Assembly 090-151	Page 50
Blower Assembly 090-151	Page 50
Control Box 090-151	Page 51
Low Voltage Shields 090-151	Page 52
Reheat Circuit Assembly 090-151	Page 53
Exterior - Front 180-300	Page 54
Exterior - Rear 180-300	Page 54
Base Pan Assembly 180-300	Page 55
Base Rail Assembly 180-300	Page 55
Front Panel Brackets 180-300	Page 56
Interior - Coil 180-300	Page 56
Heat Compartment 180-300	Page 57
Condenser Bulkhead 180-300	Page 57
Filter Frame - Low Voltage Shields 180-300	Page 58
Burner Assembly 180-300	Page 59
Control Box 180-300	Page 60
Blower Assembly 180-300	Page 61
Reheat Circuit Assembly 180-300	Page 62
Notes/Disclaimer	Page 63

MODEL NUMBER EXPLANATION

R	K	N	L	-	G	0	6	0	C	L	1	5	E	A	A	H
1	2	3	4		5		6		7	8		9	10		11	12

- | | |
|--|--|
| <p>1 TRADE NAME</p> <p>2 K = PACKAGE GAS / ELECTRIC
Commercial</p> <p>3 EFFICIENCY DESIGNATION
N = High Efficiency</p> <p>4 DESIGN SERIES
L = R-410A</p> <p>5 TECHNICAL VARIATION
G = DDC with Reheat</p> <p>6 COOLING CAPACITY (BTU/HR)
036 = 36,000
048 = 48,000
060 = 60,000
090 = 90,000
120 = 120,000
151 = 150,000
180 = 180,000
240 = 240,000
300 = 300,000</p> <p>7 ELECTRICAL DESIGNATION
C = 208-230/3/60
D = 460/3/50
Y = 575/3/60</p> | <p>8 DRIVE PACKAGE
L = Belt Drive (R = VFD - Belt Drive)
M = Belt Drive - High Static (S = VFD - Belt Drive - High Static)
T = VFD - Belt Drive - High Static (090)</p> <p>9 HEATING CAPACITY (MBH)
08 = 80,000
10 = 100,000
12 = 120,000
13 = 135,000
15 = 150,000
22 = 220,000
25 = 250,000
30 = 300,000
35 = 350,000
40 = 400,000</p> <p>10 IGNITION SYSTEM
E = Electric Ignition
X = Electric Ignition, NOx</p> <p>11 OPTION CODES
AA = No Options
AD = Hail Guard
BG = Hail Guard and Stainless Steel Heat Exchanger</p> <p>12 ECONOMIZER OPTIONS
A = No Economizer
H = Single Enthalpy Economizer with Barometric Relief
J = Single Enthalpy Economizer with Barometric Relief and Smoke Detector</p> |
|--|--|

SERIAL NUMBER EXPLANATION (Units Produced before Nov. 2013)

2	P	A	1	2	3	4	A	D	A	A	F	0	5	0	9	0	0	0	1
(1)	(2)		(3)			(4)	(5)	(6)	(7)	(8)		(9)		(10)			(11)		

- | | |
|--|---|
| <p>(1) GAS CODE</p> <p>(2) BLOWER CONTROL BOARD</p> <p>(3) COMPRESSOR IDENTIFICATION NUMBER</p> <p>(4) IGNITION DEVICE</p> <p>(5) INDUCER BLOWER</p> <p>(6) HEAT EXCHANGER</p> | <p>(7) TECHNOLOGY VARIATIONS</p> <p>(8) PLANT
F = Fort Smith, AR</p> <p>(9) WEEK</p> <p>(10) YEAR</p> <p>(11) PRODUCTION NUMBER</p> |
|--|---|

SERIAL NUMBER EXPLANATION (Units Produced after Nov. 2013)

F	0	8	1	3	9	9	9	9
(1)	(2)		(3)			(4)		

- (1) PLANT CODE
- (2) WEEK (DATE CODE)
- (3) YEAR
- (4) PRODUCTION NUMBER

**Note: For Compressor Identification Number, see Compressor Code on Rating Plate
For Gas Code, see Control System Gas Code on Rating Plate**

No.	Notes	MODEL TECHNICAL VARIATION COOLING CAPACITY HEATING CAPACITY	RKNL- G 036-060 08	RKNL- G 036-060 10	RKNL- G 036-060 12	RKNL- G 036-060 13
			PANELS, MISCELLANEOUS PARTS			
1		Base Rail - Side (2)	AE-58900-01	AE-58900-01	AE-58900-01	AE-58900-01
2		Base Rail - Condenser End	AE-58901-01	AE-58901-01	AE-58901-01	AE-58901-01
3		Base Rail - Evaporator End	AE-58902-01	AE-58902-01	AE-58902-01	AE-58902-01
4		Outdoor Coil Base Pan	AS-59051-01H	AS-59051-01H	AS-59051-01H	AS-59051-01H
5		Indoor Coil Base Pan	AS-58910-05	AS-58910-05	AS-58910-05	AS-58910-05
7		Condenser Bulkhead (Does not include Limit Baffle or Tube Support Angles)	AS-103277-02	AS-103277-02	AS-103277-02	AS-103277-01
		Limit Baffle - Attached To Condenser Bulkhead	AE-58913-02	AE-58913-02	AE-58913-02	AE-58913-01
		Tube Support Angle - Attached To The Condenser. Bulkhead	AE-59139-01	AE-59139-01	AE-59139-01	AE-59139-01
8		Blower Bulkhead Assembly (Does not include Blower Extensions, Cover Plate, Insulation Retainer)	AS-103385-01	AS-103385-01	AS-103385-01	AS-103385-01
		Tube Support Angle (Small piece attached to the Blower Bulkhead)	AE-59139-02	AE-59139-02	AE-59139-02	AE-59139-02
9		Blower Extension - Front	AE-58928-01	AE-58928-01	AE-58928-01	AE-58928-01
10		Blower Extension - Back	AE-58928-02	AE-58928-02	AE-58928-02	AE-58928-02
		Insulation Retainer	AE-59059-01	AE-59059-01	AE-59059-01	AE-59059-01
11		Wire Chase Insulation Assembly	AS-103291-01	AS-103291-01	AS-103291-01	AS-103291-01
12a		Corner Post (2)	AS-58965-01H	AS-58965-01H	AS-58965-01H	AS-58965-01H
12b		Center Post	AS-58966-01H	AS-58966-01H	AS-58966-01H	AS-58966-01H
14		Louvered Panel	AS-59028-01H	AS-59028-01H	AS-59028-01H	AS-59028-01H
15		Louvered Panel	AS-59028-03H	AS-59028-03H	AS-59028-03H	AS-59028-03H
16		Louvered Panel	AS-59028-02H	AS-59028-02H	AS-59028-02H	AS-59028-02H
17		Return/Supply Cover Assembly	AS-58992-01H	AS-58992-01H	AS-58992-01H	AS-58992-01H
18		Rear Panel (Includes Insulation, Filler Panel, and Stripping)	AS-58976-01H	AS-58976-01H	AS-58976-01H	AS-58976-01H
19		Filler Panel - Return Air	AE-58974-01	AE-58974-01	AE-58974-01	AE-58974-01
		Filler Panel Stripping	AE-58897-10	AE-58897-10	AE-58897-10	AE-58897-10
20		Blower/Filter Access Panels (2)	AS-58990-01H	AS-58990-01H	AS-58990-01H	AS-58990-01H
21		Post - Left End	AS-58973-01H	AS-58973-01H	AS-58973-01H	AS-58973-01H
22		Front Panel Assembly	AS-59132-01H	AS-59132-01H	AS-59132-01H	AS-59132-01H
23		Grommet	56-22114-06	56-22114-06	56-22114-06	56-22114-06
24		Heating Compartment Access Panel	AS-58988-02H	AS-58988-02H	AS-58988-02H	AS-58988-02H
25		Flue Hood	AS-58882-01	AS-58882-01	AS-58882-01	AS-58882-01
		Flue Hood Gasket	68-23680-03	68-23680-03	68-23680-03	68-23680-03
		Mounting Panel - External Disconnect	AE-59133-01	AE-59133-01	AE-59133-01	AE-59133-01
26		Control Box Access Door	AS-103284-01H	AS-103284-01H	AS-103284-01H	AS-103284-01H
27a		Control Box Insert Panel	AS-103283-01H	AS-103283-01H	AS-103283-01H	AS-103283-01H
27b		Disconnect Plate	AS-90756-05H	AS-90756-05H	AS-90756-05H	AS-90756-05H
27c		Receptacle Plate	AS-90756-02H	AS-90756-02H	AS-90756-02H	AS-90756-02H
28		Front Post	AS-103288-01H	AS-103288-01H	AS-103288-01H	AS-103288-01H
29		Indoor Coil Top Panel Assembly	AS-58979-01H	AS-58979-01H	AS-58979-01H	AS-58979-01H
30a		Condenser Top Panel	AS-58981-01H	AS-58981-01H	AS-58981-01H	AS-58981-01H
30b		Support - Condenser Top Panel	AE-58980-01	AE-58980-01	AE-58980-01	AE-58980-01
32		Wire Grille	95-101660-01	95-101660-01	95-101660-01	95-101660-01
34		Control Box (w/o components)	AS-103281-01	AS-103281-01	AS-103281-01	AS-103281-01

No.	Notes	MODEL TECHNICAL VARIATION COOLING CAPACITY	RKNL- G 090	RKNL- G 120	RKNL- G 151
PANELS - RAILS, BASE PANS, INSIDE CABINET					
BASE RAILS:					
A		Base Rail - Front	AE-90575-15	AE-90575-15	AE-90575-15
B		Base Rail - Right	AE-90576-03	AE-90576-03	AE-90576-03
C		Base Rail - Rear	AE-90575-04	AE-90575-04	AE-90575-04
D		Base Rail - Left	AE-90576-04	AE-90576-04	AE-90576-04
BASE PANS:					
E		Outdoor Coil Base Pan	AS-90583-05H	AS-90583-05H	AS-90577-14H
F		Indoor Coil Base Pan	AS-90577-12	AS-90577-12	AS-90577-12
INSIDE CABINET:					
G		Entry Plate	AE-90614-01	AE-90614-01	AE-90614-01
H		Entry Plate	AE-90614-01	AE-90614-01	AE-90614-01
J		Heat Compartment Side	AE-90598-07	AE-90598-07	AE-90598-07
K		Blower Deck	AS-90592-10	AS-90592-10	AS-90592-10
L		Wireway	AE-90718-05	AE-90718-05	AE-90718-05
M		Condenser Bulkhead	AS-90609-40	AS-90609-40	AS-90609-40

No.	Notes	MODEL TECHNICAL VARIATION COOLING CAPACITY	RKNL- G 090	RKNL- G 120	RKNL- G 151
PANELS - FRONT					
1		Control Box Door Assembly - w/Hinges, Latch, Gasket, Insulation	AS-102872-14H	AS-102872-14H	AS-102872-14H
2a		Bracket - Top Panel (Left)	AS-102859-16H	AS-102859-16H	AS-102859-16H
2b		Bracket - Top Panel (Center)	AS-102859-15H	AS-102859-15H	AS-102859-15H
2c		Post - Blower Section	AS-102682-12H	AS-102682-12H	AS-102682-12H
3a		Bracket - Bottom Panel (Left)	AS-102859-17H	AS-102859-17H	AS-102859-17H
3b		Bracket - Blower/Heater Compartment	AS-102859-14H	AS-102859-14H	AS-102859-14H
3c		Bracket - Bottom Panel (Right)	AS-102859-13H	AS-102859-13H	AS-102859-13H
		Latch Assembly - Control Box Door (2)	64-102855-01	64-102855-01	64-102855-01
4		Post Assembly - Indoor Coil Section	AS-90620-17H	AS-90620-17H	AS-90620-24H
5		Control Box Cover	AE-90713-02	AE-90713-02	AE-90713-02
6		Control Mounting Plate	AE-90712-06	AE-90712-06	AE-90712-06
7a		Low Voltage Shield (Before F3512) - Upper Straight	AE-90742-08	AE-90742-08	N/A
7a		Low Voltage Shield (After F3512) - Upper Angled	AE-90742-12	AE-90742-12	AE-90742-12
7b		Low Voltage Shield (Before F3512) - Lower	AE-90742-03	AE-90742-03	N/A
7b		Low Voltage Shield (After F3512) - Lower	AE-90742-11	AE-90742-11	AE-90742-11
7c		Low Voltage Shield - Middle Strip	AE-90742-09	AE-90742-09	AE-90742-09
8		Control Box Back Insulation Assembly	AS-90601-06	AS-90601-06	AS-90601-06
9		Mounting Bracket	AE-90779-02	AE-90779-02	AE-90779-02
		Outlet Flue Hood	AS-102966-01	AS-102966-01	AS-102966-01
	4	Inlet Flue Hood (2) - See Note 4	AE-90745-04	AE-90745-04	AE-90745-04
12	4	Gas Heat Access Panel Assembly - w/Hinges, Latch, Gasket, Insulation - See Note 4	AS-102872-20H	AS-102872-20H	AS-102872-20H
		Latch Assembly - Electric Heat Door (2)	64-102855-01	64-102855-01	64-102855-01
13		Gas Pipe Support Plate	AS-90774-10H	AS-90774-10H	AS-90774-10H
14		Blower Access Panel Assembly - w/Hinges, Latch, Gasket, Insulation	AS-102872-16H	AS-102872-16H	AS-102872-16H
		Latch Assembly - Blower Access Panel (3)	64-102855-01	64-102855-01	64-102855-01
16		Heat Exchanger Mounting Frame Assembly	AS-90754-01	AS-90754-01	AS-90754-01
17		Condenser Coil Access Panel - Front	AS-90631-09H	AS-90631-09H	AS-90631-11H
18		Front Corner Post	AS-90701-06H	AS-90701-06H	AS-90701-05H

No.	Notes	MODEL TECHNICAL VARIATION COOLING CAPACITY	RKNL- G 090	RKNL- G 120	RKNL- G 151
PANELS - RIGHT, REAR AND LEFT SIDES					
RIGHT:					
19		Air Stop	N/A	N/A	N/A
20		Louver Panel Assembly	AS-90789-01H	AS-90789-01H	See Accessories
REAR:					
21		Rear Corner Post	AS-90702-03H	AS-90702-03H	AS-90702-04H
22		Condenser Coil Access Panel-Rear	AS-90631-05H	AS-90631-05H	AS-90631-12H
23		Rear Panel	AS-90618-02H	AS-90618-02H	AS-90618-02H
24		Supply Cover	AS-90626-02H	AS-90626-02H	AS-90626-02H
25		Return Cover	AS-90628-02H	AS-90628-02H	AS-90628-02H
LEFT:					
26		Upper Left Panel	AS-90624-03H	AS-90624-03H	AS-90624-03H
27		Lower Left Panel	AS-90624-04H	AS-90624-04H	AS-90624-04H
28		Left Corner Panel	AS-90755-07H	AS-90755-07H	AS-90755-07H
29		Plate - Receptacle	AS-90756-02H	AS-90756-02H	AS-90756-02H
30		Plate - Disconnect	AS-90756-03H	AS-90756-03H	AS-90756-03H
31		Button Plug (2)	45-22980-06	45-22980-06	45-22980-06
32		Button Plug	45-22980-05	45-22980-05	45-22980-05
TOP:					
33		Top Panel Assembly	AS-90775-38H	AS-90775-38H	AS-90775-38H
34		Condenser Top Panel	AS-90703-09H	AS-90703-09H	AS-102872-21H
35		Venturi (2)	AS-90632-03H	AS-90632-03H	AS-90632-03H
36		Wire Grille (2)	95-100906-09	95-100906-09	95-100906-09
43		Drain Pan - Removable	See Coil Group		

No.	Notes	MODEL TECHNICAL VARIATION COOLING CAPACITY	RKNL- G 180	RKNL- G 240	RKNL- G 300
PANELS - RAILS, BASE PANS, INSIDE CABINET					
BASE RAILS:					
A		Front	AS-90827-03	AS-90827-03	AS-90827-03
B		Right	AE-90576-06	AE-90576-06	AE-90576-06
C		Rear	AS-90827-04	AS-90827-04	AS-90827-04
D		Left	AE-90576-05	AE-90576-05	AE-90576-05
BASE PANS:					
E		Outdoor Base Pan	AS-90583-09H	AS-90583-09H	AS-90583-09H
F		Indoor Coil Base Pan - Return Air	AS-90577-09	AS-90577-09	AS-90577-09
G		Indoor Coil Base Pan - Supply Air	AS-90577-10	AS-90577-10	AS-90577-10
INSIDE CABINET PANEL/PIECES:					
H 1		Entry Plate	AE-90614-01	AE-90614-01	AE-90614-01
H 2		Entry Plate - Rooftop	AE-90614-01	AE-90614-01	AE-90614-01
I		Post - Blower Section	AS-102682-07H	AS-102682-07H	AS-102682-07H
J		Heat Compartment Side	AE-90598-06	AE-90598-06	AE-90598-06
K		Blower Deck Assembly	AS-90592-08	AS-90592-08	AS-90592-08
L		Wireway	AE-90718-04	AE-90718-04	AE-90718-04
M		Condenser Bulkhead	AS-90609-13	AS-90609-13	AS-90609-13
N		Divider Panel - Between Coils	AE-90735-05	AE-90735-05	AE-90735-05
O		Bulkhead Support	AE-102725-01	AE-102725-01	AE-102725-01
P		Primary Drain Pan	AS-103030-02	AS-103030-02	AS-103030-02
		Air Stop - Outdoor Coil- Front	AE-90706-13	AE-90706-13	AE-90706-13
		Air Stop - Outdoor Coil- Rear	AE-90706-12	AE-90706-12	AE-90706-12
U		Coil Support Top	AE-102700-03	AE-102700-03	AE-102700-03
V		Angle - Tube Support (2)	AE-90600-02	AE-90600-02	AE-90600-02

No.	Notes	MODEL TECHNICAL VARIATION COOLING CAPACITY	RKNL- G 180	RKNL- G 240	RKNL- G 300
PANELS - FRONT AND RIGHT SIDES					
1		Control Box Door Assembly - w/Hinges, Latch, Gasket, Insulation	AS-102872-04H	AS-102872-04H	AS-102872-04H
2a		Bracket - Top Panel (Left)	AS-102859-01H	AS-102859-01H	AS-102859-01H
2b		Bracket - Top Panel (Center)	AS-102969-01H	AS-102969-01H	AS-102969-01H
2c		Post - Blower Section	AS-102682-07H	AS-102682-07H	AS-102682-07H
3a		Bracket - Bottom Panel (Left)	AS-102859-02H	AS-102859-02H	AS-102859-02H
3b		Bracket - Blower/Heater Compartment	AS-102859-04H	AS-102859-04H	AS-102859-04H
3c		Bracket - Bottom Panel (Right)	AS-102859-05H	AS-102859-05H	AS-102859-05H
4		Post Assembly - Indoor Coil Section	AS-90620-15H	AS-90620-15H	AS-90620-15H
5		Control Box Cover	AE-90713-05	AE-90713-05	AE-90713-05
6		Control Mounting Panel	AE-90712-05	AE-90712-05	AE-90712-05
7a		Low Voltage Shield - Control Box (Upper Right)	AE-90742-07	AE-90742-07	AE-90742-07
7b		Low Voltage Shield - Control Box (Lower Left)	AE-90742-06	AE-90742-06	AE-90742-06
7c		Thermostat Chase Cover	AE-102722-01	AE-102722-01	AE-102722-01
8		Control Box Back	AS-90601-05	AS-90601-05	AS-90601-05
9		Mounting Bracket	AE-90779-02	AE-90779-02	AE-90779-02
		Outlet Flue Hood	AS-102966-01	AS-102966-01	AS-102966-01
	4	Inlet Flue Hood (2) - See Note 4	AE-90745-04	AE-90745-04	AE-90745-04
12	4	Gas Heat Access Panel Assembly - w/Hinges, Latch, Gasket, Insulation (Heat Capacity 25) - See Note 4	AS-102872-11H	N/A	N/A
12	4	Gas Heat Access Panel Assembly - w/Hinges, Latch, Gasket, Insulation (Heat Capacity 30,35) - See Note 4	AS-102872-12H	AS-102872-12H	AS-102872-12H
12	4	Gas Heat Access Panel Assembly - w/Hinges, Latch, Gasket, Insulation (Heat Capacity 40) - See Note 4	N/A	AS-102872-10H	AS-102872-10H
13		Power Entry Plate Assembly	AS-90774-12H	AS-90774-12H	AS-90774-12H
14		Blower Access Panel Assembly - w/Hinges, Latch, Gasket, Insulation	AS-102872-02H	AS-102872-02H	AS-102872-02H
16		Mounting Frame - Heat Exchanger Frame	AS-90754-03	AS-90754-03	AS-90754-03
17		Condenser Coil Access Panel - Front	AS-90734-08H	AS-90734-08H	AS-90734-08H
38c		Post - Outdoor Coil (Front)		See Coil Group	
39c		Post - Outdoor Coil (Rear)		See Coil Group	
		Louver Panel (Hail Guard) - Left	AS-90789-10H	AS-90789-10H	AS-90789-10H
		Louver Panel (Hail Guard) - Right	AS-90789-09H	AS-90789-09H	AS-90789-09H

No.	Notes	MODEL TECHNICAL VARIATION COOLING CAPACITY	RKNL- G 180	RKNL- G 240	RKNL- G 300
PANELS - REAR, LEFT, AND TOP					
REAR:					
22		Condenser Coil Access Panel-Rear	AS-90734-09H	AS-90734-09H	AS-90734-09H
23		Rear Panel - Right	AS-90618-08H	AS-90618-08H	AS-90618-08H
24		Supply Cover	AS-90628-03H	AS-90628-03H	AS-90628-03H
25		Return Cover	AS-90628-04H	AS-90628-04H	AS-90628-04H
LEFT:					
26		Upper Left Panel	AS-90624-09H	AS-90624-09H	AS-90624-09H
27		Lower Left Panel	AS-90624-08H	AS-90624-08H	AS-90624-08H
28		Left Corner Panel Assembly	AS-90755-05H	AS-90755-05H	AS-90755-05H
		Bracket - Left Corner Panel Assembly (2)	AE-90779-01	AE-90779-01	AE-90779-01
		Gasket for receptacle plate	68-42514-08	68-42514-08	68-42514-08
		Gasket for disconnect plate	68-42514-09	68-42514-09	68-42514-09
29		Plate - Install inside Panel-Receptacle	AS-90756-02H	AS-90756-02H	AS-90756-02H
30		Plate - Install inside Panel-Disconnect	AS-90756-03H	AS-90756-03H	AS-90756-03H
31		Button Plug (3)	45-42558-01	45-42558-01	45-42558-01
32		Star Bushing (3)	45-18515-01	45-18515-01	45-18515-01
TOP:					
33a		Top Panel Assembly - Right	AS-90616-04H	AS-90616-04H	AS-90616-04H
33b		Top Panel Assembly - Left	AS-90616-05H	AS-90616-05H	AS-90616-05H
34a		Top Panel - Front	AS-90633-10H	AS-90633-10H	AS-90633-10H
34b		Top Panel - Middle	AS-90633-12H	AS-90633-11H	AS-90633-11H
34c		Top Panel - Rear	AS-90633-09H	AS-90633-09H	AS-90633-09H
35		Venturi	AS-90632-03H (4)	AS-90632-03H (6)	AS-90632-03H (6)
36		Wire Grille	95-100906-09 (4)	95-100906-09 (6)	95-100906-09 (6)
43		Drain Pan - Removable	See Coil Group		

No.	Notes	MODEL TECHNICAL VARIATION COOLING CAPACITY ELECTRICAL DESIGNATION	RKNL- G 036-060 C	RKNL- G 036-060 D
ELECTRIC GROUP				
		Outlet Box	45-41952-02	45-41952-02
		Receptacle Cover	45-41953-02	45-41953-02
		Receptacle - Ground Fault	45-41954-01	45-41954-01
		Disconnect Switch	42-100650-01	42-100650-01
44		Auxiliary Limit - Blower Extension	47-17359-30	47-17359-30
		Pressure Switch	See Burner/Manifold	
		Pressure Switch Assembly - (Clogged Filter and Fan Proving)	42-103320-26	42-103320-26
48	Stk	Inducer Blower Motor - Including Gasket	70-23641-01	70-23641-02
49	Stk	Inducer Blower Motor Gasket	68-23643-01	68-23643-01
50		Low Pressure Control	47-102240-03	47-102240-03
51		High Pressure Control	47-23699-04	47-23699-04
		Temperature Sensor/Clip Assembly (Liquid Line, LLS1)	47-102710-08	47-102710-08
CONTROL BOX COMPONENTS:				
37a	Stk	Integrated Furnace Control	See Gas Controls	
37b	Stk	Unit Controller (RTU-C)	47-102883-02	47-102883-02
37c		Controller - Outdoor Fan Motor	47-104039-01	47-104039-01
37d		Button Plug w/Recessed-Type Head (1-3/8 inch hole)	45-22980-09	45-22980-09
37e		Button Plug w/Recessed-Type Head (7/8 inch hole)	45-22980-05	45-22980-05
37f		Accessory Relay	42-102234-01	42-102234-01
38	Stk	Belt Drive Blower Contactor	42-102664-08	42-22464-01
		Ground Lug	45-19000-01	45-19000-01
40	Stk	Compressor Contactor	See Compressor Group	
41		Capacitor - Fan Motor	See Fan Group	
42	Stk	Low Voltage Shield	AE-103285-01	AE-103285-01
43	Stk	Transformer	46-42515-04	46-42515-05
52		Comfort Alert	42-101504-03	42-101504-03
WIRING HARNESES:				
		Jumper - 7 Pin Connector (Unit Configuration)	45-42522-110	45-42522-110
		Wiring Harness - Reheat (12 pin to 6 terminals, Temperature Sensor LLS2, 2 stripped wires)	45-42522-115	45-42522-115
		Wiring Harness - Economizer (8 Pin and 9 Pin) to (12 Pin, 4 Pin, 4 Connectors, and 2 Sensors)	45-42522-107	45-42522-107
		Wiring Harness - Compressor Control, 14 Pin to (two 2 Pin Connectors and 2 Sensors)	45-42522-111	45-42522-111
		Wiring Harness - IFC Communication (4 Pin to 4 Pin)	45-42522-95	45-42522-95
		Wiring Harness - 12 Pin from IFC to 9 Connectors	AS-102393-04	AS-102393-04

No.	Notes	MODEL TECHNICAL VARIATION COOLING CAPACITY ELECTRICAL DESIGNATION	RKNL- G 090 C	RKNL- G 120 C	RKNL- G 151 C
ELECTRICAL GROUP					
CONTROL BOX COMPONENTS: (57 - 62)					
57	Stk	Transformer - Control	46-42515-04	46-42515-04	46-42515-04
58a		Double Row Terminal Block	45-42548-02	45-42548-02	45-42548-02
58b		Blower Relay	42-21571-08	42-21571-08	42-21571-08
58c		Ground Lug	45-19000-02	45-19000-02	45-19000-02
58d		Accessory Relay	42-19736-05	42-19736-05	42-19736-05
60		Capacitor - Fan Motor	See Fan Group		
61a	3	Integrated Furnace Control Board (IFC) - See Note 3	See Gas Controls		
61b	Stk	Unit Controller (RTU-C)	47-102883-02	47-102883-02	47-102883-02
61c	Stk	Controller - Outdoor Fan Motor	47-104039-01	47-104039-01	47-104039-01
61d	Stk	Variable Frequency Drive (VFD) - Drive Package R	47-104280-01	47-104280-01	47-104282-01
61d	Stk	Variable Frequency Drive (VFD) - Drive Package S	47-104280-01	47-104281-01	47-104282-01
61d	Stk	Variable Frequency Drive (VFD) - Drive Package T	47-104281-01	N/A	N/A
62a	Stk	Contactors - Compressor	42-102664-08	42-102664-08	42-102664-08
62b	Stk	Contactors w/Auxiliary Switch - Compressor	42-102664-14	42-102664-14	42-102664-08
		Comfort Alert	42-101504-03	42-101504-03	42-101504-03
MISCELLANEOUS:					
		Low Ambient Control Assembly	AS-103034-01	AS-103034-01	AS-103034-01
		Pressure Switch	See Heat Exchanger/Burner		
		Pressure Switch Assembly - (Clogged Filter and Fan Proving)	42-103320-27	42-103320-27	42-103320-27
		Disconnect Switch Assembly	42-42559-02	42-42559-02	42-42559-02
		Outlet Box	45-41952-02	45-41952-02	45-41952-02
		Cover - Receptacle	45-41953-02	45-41953-02	45-41953-02
		Receptacle/Ground Fault	45-41954-01	45-41954-01	45-41954-01
		High Pressure Control (2)	See Coil Group		
		Low Pressure Control (2)	See Coil Group		
WIRING HARNESES:					
		Wiring Harness - Fan Motor #1	See Fan Group		
		Wiring Harness - Fan Motor #2	See Fan Group		
		Wiring Harness - Twist-Loc (12 Pin and 4 Pin) to 9 Pin	45-42522-100	45-42522-100	45-42522-100
		Wiring Harness - 4 Pin from Rooftop Control Unit to (3 strip leads for Variable Frequency Drive)	45-42522-120	45-42522-120	45-42522-120
		Wiring Harness - 12 Pin from Rooftop Control Unit to (6 Connectors and 1 Temperature Sensor)	45-42522-121	45-42522-121	45-42522-121
		Wiring Harness - 4 Pin to 4 Pin (IFC Communication)	45-42522-95	45-42522-95	45-42522-95
		Wiring Harness - Sensor (8 Pin to 4 Connectors and 2 Temperature Sensors)	45-42522-98	45-42522-98	45-42522-98
		Jumper - Unit Configuration (7 Pin Connector)	45-42522-97	45-42522-97	45-42522-97
		Wiring Harness - Compressor Control (14 Pin to Four 2 Pin Connectors and Three Temperature Sensors)	45-42522-99	45-42522-99	45-42522-99
		Wiring Harness - Twist-Loc (12 Pin to 3 Pin and 7 strip leads) for Heat Capacity 15E	45-102706-06	45-102706-06	45-102706-06
		Wiring Harness - Twist-Loc (12 Pin to 10 strip leads) for Heat Capacity 22E, 25E	45-102706-10	45-102706-10	45-102706-10
		Plug Harness - Compressor	See Compressor Group		
		Wiring Harness - Induced Draft Blower	45-42522-19	45-42522-19	45-42522-19
		Bypass Plug - Economizer 12 Pin	AS-61997-55	AS-61997-55	AS-61997-55

No.	Notes	MODEL TECHNICAL VARIATION COOLING CAPACITY ELECTRICAL DESIGNATION	RKNL- G 090 D	RKNL- G 120 D	RKNL- G 151 D
ELECTRICAL GROUP					
CONTROL BOX COMPONENTS: (57 - 62)					
57	Stk	Transformer - Control	46-42515-05	46-42515-05	46-42515-02
58a		Double Row Terminal Block	45-42548-02	45-42548-02	45-42548-02
58b		Blower Relay	42-21571-08	42-21571-08	42-21571-08
58c		Ground Lug	45-19000-02	45-19000-02	45-19000-02
58d		Accessory Relay	42-19736-05	42-19736-05	42-19736-05
60		Capacitor - Fan Motor	See Fan Group		
61a	3	Integrated Furnace Control Board (IFC) - See Note 3	See Gas Controls		
61b	Stk	Unit Controller (RTU-C)	47-102883-02	47-102883-02	47-102883-02
61c	Stk	Controller - Outdoor Fan Motor	47-104039-01	47-104039-01	47-104039-01
61d	Stk	Variable Frequency Drive (VFD) - Drive Package R	47-104285-01	47-104285-01	47-104287-01
61d	Stk	Variable Frequency Drive (VFD) - Drive Package S	47-104285-01	47-104286-01	47-104287-01
61d	Stk	Variable Frequency Drive (VFD) - Drive Package T	47-104286-01	N/A	N/A
62a	Stk	Contactoer - Compressor	42-102664-08	42-102664-08	42-102664-08
62b	Stk	Contactoer w/Auxiliary Switch - Compressor	42-102664-14	42-102664-14	42-102664-14
		Comfort Alert	42-101504-03	42-101504-03	42-101504-03
MISCELLANEOUS:					
		Low Ambient Control Assembly	AS-103034-01	AS-103034-01	AS-103034-01
		Pressure Switch	See Heat Exchanger/Burner		
		Pressure Switch Assembly - (Clogged Filter and Fan Proving)	42-103320-27	42-103320-27	42-103320-27
		Disconnect Switch Assembly	42-42559-02	42-42559-02	42-42559-02
		Outlet Box	45-41952-02	45-41952-02	45-41952-02
		Cover - Receptacle	45-41953-02	45-41953-02	45-41953-02
		Receptacle/Ground Fault	45-41954-01	45-41954-01	45-41954-01
		High Pressure Control (2)	See Coil Group		
		Low Pressure Control (2)	See Coil Group		
WIRING HARNESES:					
		Wiring Harness - Fan Motor #1	See Fan Group		
		Wiring Harness - Fan Motor #2	See Fan Group		
		Wiring Harness - Twist-Loc (12 Pin and 4 Pin) to 9 Pin	45-42522-100	45-42522-100	45-42522-100
		Wiring Harness - 4 Pin from Rooftop Control Unit to (3 strip leads for Variable Frequency Drive)	45-42522-120	45-42522-120	45-42522-120
		Wiring Harness - 12 Pin from Rooftop Control Unit to (6 Connectors and 1 Temperature Sensor)	45-42522-121	45-42522-121	45-42522-121
		Wiring Harness - 4 Pin to 4 Pin (IFC Communication)	45-42522-95	45-42522-95	45-42522-95
		Wiring Harness - Sensor (8 Pin to 4 Connectors and 2 Temperature Sensors)	45-42522-98	45-42522-98	45-42522-98
		Jumper - Unit Configuration (7 Pin Connector)	45-42522-97	45-42522-97	45-42522-97
		Wiring Harness - Compressor Control (14 Pin to Four 2 Pin Connectors and Three Temperature Sensors)	45-42522-99	45-42522-99	45-42522-99
		Wiring Harness - Twist-Loc (12 Pin to 3 Pin and 7 strip leads) for Heat Capacity 15E	45-102706-06	45-102706-06	45-102706-06
		Wiring Harness - Twist-Loc (12 Pin to 10 strip leads) for Heat Capacity 22E, 25E	45-102706-10	45-102706-10	45-102706-10
		Plug Harness - Compressor	See Compressor Group		
		Wirng Harness - Induced Draft Blower	45-42522-19	45-42522-19	45-42522-19
		Bypass Plug - Economizer 12 Pin	AS-61997-55	AS-61997-55	AS-61997-55

No.	Notes	MODEL TECHNICAL VARIATION COOLING CAPACITY ELECTRICAL DESIGNATION	RKNL- G 180 C	RKNL- G 240 C	RKNL- G 300 C
ELECTRIC GROUP					
CONTROL BOX COMPONENTS:					
57a	Stk	Transformer - Control	46-42515-04	46-42515-04	46-42515-04
57b	Stk	Transformer - Discharge Solenoid Relay	46-103324-01	46-103324-01	46-103324-01
58a		Terminal Block - Double Row	45-42548-02	45-42548-02	45-42548-02
58b		Terminal Block	45-21134-04	45-21134-04	45-21134-04
58c		Ground Lug	45-19000-02	45-19000-02	45-19000-02
58d		Accessory Relay	42-19736-05	42-19736-05	42-19736-05
58e	Stk	Discharge Solenoid Relay	42-21571-08	42-21571-08	42-21571-08
59	Stk	Blower Relay	42-21571-08	42-21571-08	42-21571-08
		Pressure Switch Assembly - (Clogged Filter and Fan Proving)	42-103320-27	42-103320-27	42-103320-27
		Disconnect Switch Assembly	42-42559-02	42-42559-02	42-42559-02
		Outlet Box	45-41952-02	45-41952-02	45-41952-02
		Cover - Receptacle	45-41953-02	45-41953-02	45-41953-02
		Receptacle/Ground Fault	45-41954-01	45-41954-01	45-41954-01
		Low Ambient Assembly (2)	AS-103034-01	AS-103034-01	AS-103034-01
60		Run Capacitor		See Fan Group	
		High Pressure Control		See Coil Group	
		Low Pressure Control		See Coil Group	
61a		Integrated Furnace Control		See Gas Controls	
61b	Stk	Unit Controller (RTU-C)	47-102883-02	47-102883-02	47-102883-02
61c	Stk	Controller - Outdoor Fan Motor	47-104039-01	47-104039-01	47-104039-01
61d	Stk	Variable Frequency Drive (VFD) - Drive Package R	47-104281-01	47-104282-01	47-104283-01
61d	Stk	Variable Frequency Drive (VFD) - Drive Package S	47-104282-01	47-104283-01	47-104284-01
61d	Stk	Variable Frequency Drive (VFD) - Drive Package T	N/A	N/A	N/A
62a	Stk	Compressor Contactor	42-102664-12	42-102664-12	42-102664-26
62b	Stk	Compressor Contactor	42-102664-12	42-102664-26	42-102664-26
62c		Comfort Alert (2)	42-101504-03	42-101504-03	42-101504-03
WIRING HARNESES:					
		Wiring Harness - Motor #1		See Fan Group	
		Wiring Harness - Motor #2		See Fan Group	
		Wiring Harness - 4 Pin to 4 Pin (IFC Communication)	45-42522-95	45-42522-95	45-42522-95
		Wiring Harness - 8 Pin to 4 Connectors and 2 Temperature Sensors	45-42522-98	45-42522-98	45-42522-98
		Jumper - 7 Pin Connector (Unit Configuration)	45-42522-97	45-42522-97	45-42522-97
		Wiring Harness - Compressor Control (14 Pin to Four 2 Pin Connectors and Three Temperature Sensors)	45-42522-118	45-42522-118	45-42522-118
		Wiring Harness - 12 Pin to Flame Sensor	45-42522-119	45-42522-119	45-42522-119
		Wiring Harness - 4 Pin to Variable Frequency Drive (VFD)	45-42522-120	45-42522-120	45-42522-120
		Wiring Harness - Twist-Loc, Economizer (12 Pin and 4 Pin to 9 Pin)	45-42522-93	45-42522-93	45-42522-93
		Plug Harness - Compressor		See Compressor Group	
		Bypass Plug - Economizer 12 Pin	AS-61997-55	AS-61997-55	AS-61997-55
		Wiring Harness - Induced Draft Blower (25E)	45-42522-87	N/A	N/A
		Wiring Harness - Induced Draft Blower (30E,35E)	45-42522-86	45-42522-86	45-42522-86
		Wiring Harness - Induced Draft Blower (40E)	N/A	45-42522-90	45-42522-90
		Wiring Harness - Furnace Control (12 pin to 12 wire leads - Twist Loc)	45-42522-88	45-42522-88	45-42522-88

No.	Notes	MODEL TECHNICAL VARIATION COOLING CAPACITY ELECTRICAL DESIGNATION	RKNL- G 180 D	RKNL- G 240 D	RKNL- G 300 D
ELECTRIC GROUP					
CONTROL BOX COMPONENTS:					
57a	Stk	Transformer - Control	46-42515-05	46-42515-05	46-42515-05
57b	Stk	Transformer - Discharge Solenoid Relay	46-103324-02	46-103324-02	46-103324-02
58a		Terminal Block - Double Row	45-42548-02	45-42548-02	45-42548-02
58b		Terminal Block	45-21134-04	45-21134-04	45-21134-04
58c		Ground Lug	45-19000-02	45-19000-02	45-19000-02
58d		Accessory Relay	42-19736-05	42-19736-05	42-19736-05
58e	Stk	Discharge Solenoid Relay	42-21571-08	42-21571-08	42-21571-08
59	Stk	Blower Relay	42-21571-08	42-21571-08	42-21571-08
		Pressure Switch Assembly - (Clogged Filter and Fan Proving)	42-103320-27	42-103320-27	42-103320-27
		Disconnect Switch Assembly	42-42559-02	42-42559-02	42-42559-02
		Outlet Box	45-41952-02	45-41952-02	45-41952-02
		Cover - Receptacle	45-41953-02	45-41953-02	45-41953-02
		Receptacle/Ground Fault	45-41954-01	45-41954-01	45-41954-01
		Low Ambient Assembly (2)	AS-103034-01	AS-103034-01	AS-103034-01
60		Run Capacitor		See Fan Group	
		High Pressure Control		See Coil Group	
		Low Pressure Control		See Coil Group	
61a		Integrated Furnace Control		See Gas Controls	
61b	Stk	Unit Controller (RTU-C)	47-102883-02	47-102883-02	47-102883-02
61c	Stk	Controller - Outdoor Fan Motor	47-104039-01	47-104039-01	47-104039-01
61d	Stk	Variable Frequency Drive (VFD) - Drive Package R	47-104286-01	47-104287-01	47-104288-01
61d	Stk	Variable Frequency Drive (VFD) - Drive Package S	47-104287-01	47-104288-01	47-104289-01
61d	Stk	Variable Frequency Drive (VFD) - Drive Package T	N/A	N/A	N/A
62a	Stk	Compressor Contactor	42-102664-12	42-102664-12	42-102664-26
62b	Stk	Compressor Contactor	42-102664-12	42-102664-26	42-102664-26
62c		Comfort Alert (2)	42-101504-03	42-101504-03	42-101504-03
WIRING HARNESES:					
		Wiring Harness - Motor #1		See Fan Group	
		Wiring Harness - Motor #2		See Fan Group	
		Wiring Harness - 4 Pin to 4 Pin (IFC Communication)	45-42522-95	45-42522-95	45-42522-95
		Wiring Harness - 8 Pin to 4 Connectors and 2 Temperature Sensors	45-42522-98	45-42522-98	45-42522-98
		Jumper - 7 Pin Connector (Unit Configuration)	45-42522-97	45-42522-97	45-42522-97
		Wiring Harness - Compressor Control (14 Pin to Four 2 Pin Connectors and Three Temperature Sensors)	45-42522-118	45-42522-118	45-42522-118
		Wiring Harness - 12 Pin to Flame Sensor	45-42522-119	45-42522-119	45-42522-119
		Wiring Harness - 4 Pin to Variable Frequency Drive (VFD)	45-42522-120	45-42522-120	45-42522-120
		Wiring Harness - Twist-Loc, Economizer (12 Pin and 4 Pin to 9 Pin)	45-42522-93	45-42522-93	45-42522-93
		Plug Harness - Compressor		See Compressor Group	
		Bypass Plug - Economizer 12 Pin	AS-61997-55	AS-61997-55	AS-61997-55
		Wiring Harness - Induced Draft Blower (25E)	45-42522-87	N/A	N/A
		Wiring Harness - Induced Draft Blower (30E,35E)	45-42522-86	45-42522-86	45-42522-86
		Wiring Harness - Induced Draft Blower (40E)	N/A	45-42522-90	45-42522-90
		Wiring Harness - Furnace Control (12 pin to 12 wire leads - Twist Loc)	45-42522-88	45-42522-88	45-42522-88

No.	Notes	MODEL TECHNICAL VARIATION COOLING CAPACITY ELECTRICAL DESIGNATION	RKNL- G 036 C	RKNL- G 036 D
FAN GROUP				
35	Stk	Fan Motor	51-100998-30	51-100998-31
36	Stk	Fan Blade	70-23594-01	70-23594-01
41	Stk	Capacitor - Fan Motor	43-100496-04	43-100496-04

No.	Notes	MODEL TECHNICAL VARIATION COOLING CAPACITY ELECTRICAL DESIGNATION	RKNL- G 048 C	RKNL- G 048 D
FAN GROUP				
35	Stk	Fan Motor	51-100998-30	51-100998-31
36	Stk	Fan Blade	70-23594-01	70-23594-01
41	Stk	Capacitor - Fan Motor	43-100496-04	43-100496-04

No.	Notes	MODEL TECHNICAL VARIATION COOLING CAPACITY ELECTRICAL DESIGNATION	RKNL- G 060 C	RKNL- G 060 D
FAN GROUP				
35	Stk	Fan Motor	51-100998-32	51-100998-33
36	Stk	Fan Blade	70-42484-01	70-42484-01
41	Stk	Capacitor - Fan Motor	43-100496-12	43-100496-12

No.	Notes	MODEL TECHNICAL VARIATION COOLING CAPACITY ELECTRICAL DESIGNATION	RKNL- G 090 C	RKNL- G 120 C	RKNL- G 151 C
FAN GROUP					
52	Stk	Fan Motor (2)	51-42534-24	51-42534-24	51-42534-29
		Wiring Harness - Motor #1	45-102706-01	45-102706-01	45-102706-27
		Wiring Harness - Motor #2	45-102706-02	45-102706-02	45-102706-24
53	Stk	Fan Blade (2)	70-42572-04	70-42572-04	70-21858-18
60	Stk	Capacitor - Fan Motor (2)	43-100496-12	43-100496-12	43-100496-17

No.	Notes	MODEL TECHNICAL VARIATION COOLING CAPACITY ELECTRICAL DESIGNATION	RKNL- G 090 D	RKNL- G 120 D	RKNL- G 151 D
FAN GROUP					
52	Stk	Fan Motor (2)	51-42534-25	51-42534-25	51-42534-28
		Wiring Harness - Motor #1	45-102706-01	45-102706-01	45-102706-27
		Wiring Harness - Motor #2	45-102706-02	45-102706-02	45-102706-24
53	Stk	Fan Blade (2)	70-42572-04	70-42572-04	70-21858-18
60	Stk	Capacitor - Fan Motor (2)	43-100496-12	43-100496-12	43-100496-12

No.	Notes	MODEL TECHNICAL VARIATION COOLING CAPACITY ELECTRICAL DESIGNATION	RKNL- G 180 C	RKNL- G 240 C	RKNL- G 300 C
FAN GROUP					
52	Stk	Fan Motor	51-42534-24 (4)	51-42534-24 (6)	51-42534-24 (6)
		Wiring Harness - Motor #1 & #4	45-42522-71	45-42522-71	45-42522-71
		Wiring Harness - Motor #2 & #5	N/A	45-42522-70	45-42522-70
		Wiring Harness - Motor #3 & #6	45-42522-69	45-42522-69	45-42522-69
53	Stk	Fan Blade	70-42572-04 (4)	70-42572-04 (6)	70-42572-04 (6)
60	Stk	Capacitor - Fan Motor	43-100496-12 (4)	43-100496-12 (6)	43-100496-12 (6)

No.	Notes	MODEL TECHNICAL VARIATION COOLING CAPACITY ELECTRICAL DESIGNATION	RKNL- G 180 D	RKNL- G 240 D	RKNL- G 300 D
FAN GROUP					
52	Stk	Fan Motor	51-42534-25 (4)	51-42534-25 (6)	51-42534-25 (6)
		Wiring Harness - Motor #1 & #4	45-42522-71	45-42522-71	45-42522-71
		Wiring Harness - Motor #2 & #5	N/A	45-42522-70	45-42522-70
		Wiring Harness - Motor #3 & #6	45-42522-69	45-42522-69	45-42522-69
53	Stk	Fan Blade	70-42572-04 (4)	70-42572-04 (6)	70-42572-04 (6)
60	Stk	Capacitor - Fan Motor	43-100496-12 (4)	43-100496-12 (6)	43-100496-12 (6)

No.	Notes	MODEL	RKLN-	RKLN-	RKLN-	RKLN-	RKLN-	RKLN-
		TECHNICAL VARIATION	G	G	G	G	G	G
		COOLING CAPACITY	036	048	060	036	048	060
		ELECTRICAL DESIGNATION	C	C	C	D	D	D
		DRIVE PACKAGE	L	L	L	L	L	L
BLOWER GROUP - BELT DRIVE								
62	Stk	Blower Assembly (Items 63-73, Excluding 67 and 72b)	AS-101336-01	AS-101336-05	AS-101336-05	AS-101336-01	AS-101336-05	AS-101336-05
63		Housing	AS-101341-01	AS-101341-01	AS-101341-01	AS-101341-01	AS-101341-01	AS-101341-01
64		Bearing Frame Tri-Arm (2)	70-41723-03	70-41723-03	70-41723-03	70-41723-03	70-41723-03	70-41723-03
65	Stk	Ball Bearing And Cushion (2)	70-41911-01	70-41911-01	70-41911-01	70-41911-01	70-41911-01	70-41911-01
66	Stk	Blower Shaft	70-21933-02	70-21933-02	70-21933-02	70-21933-02	70-21933-02	70-21933-02
67	Stk	Fixed Pitch Sheave	71-100772-04	71-21932-03	71-21932-03	71-100772-04	71-21932-03	71-21932-03
68		Blower Support - Left	AE-58950-02	AE-58950-02	AE-58950-02	AE-58950-02	AE-58950-02	AE-58950-02
69	Stk	Blower Wheel	70-23589-01	70-23589-01	70-23589-01	70-23589-01	70-23589-01	70-23589-01
70		Cut-Off Tabulation	AE-64401-05	AE-64401-05	AE-64401-05	AE-64401-05	AE-64401-05	AE-64401-05

No.	Notes	MODEL	RKLN-	RKLN-	RKLN-	RKLN-	RKLN-	RKLN-
		TECHNICAL VARIATION	G	G	G	G	G	G
		COOLING CAPACITY	036	048	060	036	048	060
		ELECTRICAL DESIGNATION	C	C	C	D	D	D
		DRIVE PACKAGE	L	L	L	L	L	L
BLOWER MOTOR MOUNTING - BELT DRIVE								
MOTOR MOUNTING:								
71		Blower Bracket	AE-101124-01	AE-101124-01	AE-101124-01	AE-101124-01	AE-101124-01	AE-101124-01
72		Blower Bracket - Drive Side	AE-101124-04	AE-101124-04	AE-101124-04	AE-101124-04	AE-101124-04	AE-101124-04
72a		Grommet	56-18518-04	56-18518-04	56-18518-04	56-18518-04	56-18518-04	56-18518-04
72b		Cross Brace	AE-101467-01	AE-101467-01	AE-101467-01	AE-101467-01	AE-101467-01	AE-101467-01
73		Motor Mount Assembly	AS-101340-01	AS-101340-01	AS-101340-01	AS-101340-01	AS-101340-01	AS-101340-01

No.	Notes	MODEL	RKLN-	RKLN-	RKLN-	RKLN-	RKLN-	RKLN-
		TECHNICAL VARIATION	G	G	G	G	G	G
		COOLING CAPACITY	036	048	060	036	048	060
		ELECTRICAL DESIGNATION	C	C	C	D	D	D
		DRIVE PACKAGE	L	L	L	L	L	L
BLOWER MOTOR GROUP - BELT DRIVE								
74		Blower Motor	51-42579-01	51-42579-01	51-21909-01	51-42579-01	51-42579-01	51-21909-01
75		Variable Pitch Sheave	71-40427-30	71-40427-29	71-40427-29	71-40427-30	71-40427-29	71-40427-29
76		Belt	71-40235-43	71-40235-42	71-40235-42	71-40235-43	71-40235-42	71-40235-42

No.	Notes	MODEL	RKNL-	RKNL-	RKNL-	RKNL-	RKNL-	RKNL-
		TECHNICAL VARIATION	G	G	G	G	G	G
		COOLING CAPACITY	036	048	060	036	048	060
		ELECTRICAL DESIGNATION	C	C	C	D	D	D
		DRIVE PACKAGE	M	M	M	M	M	M
BLOWER GROUP - BELT DRIVE								
62	Stk	Blower Assembly (Items 63-73, Excluding 67 and 72b)	AS-101336-05	AS-101336-04	AS-101336-05	AS-101336-05	AS-101336-04	AS-101336-05
63		Housing	AS-101341-01	AS-101341-01	AS-101341-01	AS-101341-01	AS-101341-01	AS-101341-01
64		Bearing Frame Tri-Arm (2)	70-41723-03	70-41723-03	70-41723-03	70-41723-03	70-41723-03	70-41723-03
65	Stk	Ball Bearing And Cushion (2)	70-41911-01	70-41911-01	70-41911-01	70-41911-01	70-41911-01	70-41911-01
66	Stk	Blower Shaft	70-21933-02	70-21933-02	70-21933-02	70-21933-02	70-21933-02	70-21933-02
67	Stk	Fixed Pitch Sheave	71-21932-03	71-100772-02	71-21932-03	71-21932-03	71-100772-02	71-21932-03
68		Blower Support - Left	AE-58950-02	AE-58950-02	AE-58950-02	AE-58950-02	AE-58950-02	AE-58950-02
69	Stk	Blower Wheel	70-23589-01	70-23589-01	70-23589-01	70-23589-01	70-23589-01	70-23589-01
70		Cut-Off Tabulation	AE-64401-05	AE-64401-05	AE-64401-05	AE-64401-05	AE-64401-05	AE-64401-05

No.	Notes	MODEL	RKNL-	RKNL-	RKNL-	RKNL-	RKNL-	RKNL-
		TECHNICAL VARIATION	G	G	G	G	G	G
		COOLING CAPACITY	036	048	060	036	048	060
		ELECTRICAL DESIGNATION	C	C	C	D	D	D
		DRIVE PACKAGE	M	M	M	M	M	M
BLOWER MOTOR MOUNTING - BELT DRIVE								
MOTOR MOUNTING:								
71		Blower Bracket	AE-101124-01	AE-101124-01	AE-101124-01	AE-101124-01	AE-101124-01	AE-101124-01
72		Blower Bracket - Drive Side	AE-101124-04	AE-101124-04	AE-101124-04	AE-101124-04	AE-101124-04	AE-101124-04
72a		Grommet	56-18518-04	56-18518-04	56-18518-04	56-18518-04	56-18518-04	56-18518-04
72b		Cross Brace	AE-101467-01	AE-101467-01	AE-101467-01	AE-101467-01	AE-101467-01	AE-101467-01
73		Motor Mount Assembly	AS-101340-01	AS-101340-01	AS-101340-01	AS-101340-01	AS-101340-01	AS-101340-01

No.	Notes	MODEL	RKNL-	RKNL-	RKNL-	RKNL-	RKNL-	RKNL-
		TECHNICAL VARIATION	G	G	G	G	G	G
		COOLING CAPACITY	036	048	060	036	048	060
		ELECTRICAL DESIGNATION	C	C	C	D	D	D
		DRIVE PACKAGE	M	M	M	M	M	M
BLOWER MOTOR GROUP - BELT DRIVE								
74		Blower Motor	51-42579-01	51-21909-01	51-41936-01	51-42579-01	51-21909-01	51-41936-01
75		Variable Pitch Sheave	71-40427-25	71-40427-25	71-40427-43	71-40427-25	71-40427-25	71-40427-43
76		Belt	71-40235-43	71-40235-42	71-40235-44	71-40235-43	71-40235-42	71-40235-44

No.	Notes	MODEL TECHNICAL VARIATION COOLING CAPACITY DRIVE PACKAGE	RKNL- G 090 R	RKNL- G 120 R	RKNL- G 151 R
BLOWER ASSEMBLY GROUP - BELT DRIVE					
64	Stk	Blower Assembly (Includes Items 65-68)	AS-90757-01	AS-90757-01	AS-90757-01
65	Stk	Blower Wheel	70-42540-02	70-42540-02	70-42540-02
66		Bearing Frame Tri-Arm (2)	70-42540-05	70-42540-05	70-42540-05
67		Bearing with Bearing Lock (2)	70-41854-02	70-41854-02	70-41854-02
68	Stk	Blower Shaft	70-42540-04	70-42540-04	70-42540-04
69		Blower Mounting Angles (2)	AE-90708-01	AE-90708-01	AE-90708-01
		Blower Angle Stop	AE-90709-02	AE-90709-02	AE-90709-02
70		Motor Mount	AS-90824-01	AS-90824-01	AS-90824-01
71	Stk	Blower Motor - C/D Voltages	51-102826-14	51-102826-14	51-102826-06
72	Stk	Variable Sheave	71-42538-02	71-42538-02	71-40427-31
73	Stk	Belt	71-40438-30	71-40438-27	71-40438-23
74	Stk	Fixed Sheave	71-100774-05	71-100774-02	71-100774-01
		Key	94-42551-09	94-42551-09	94-42551-09
	Stk	Bushing for Sheave w/Screws	71-100773-01	71-100773-01	71-100773-01

No.	Notes	MODEL TECHNICAL VARIATION COOLING CAPACITY DRIVE PACKAGE	RKNL- G 090 S	RKNL- G 120 S	RKNL- G 151 S
BLOWER ASSEMBLY GROUP - BELT DRIVE					
64	Stk	Blower Assembly (Includes Items 65-68)	AS-90757-01	AS-90757-01	AS-90757-01
65	Stk	Blower Wheel	70-42540-02	70-42540-02	70-42540-02
66		Bearing Frame Tri-Arm (2)	70-42540-05	70-42540-05	70-42540-05
67		Bearing with Bearing Lock (2)	70-41854-02	70-41854-02	70-41854-02
68	Stk	Blower Shaft	70-42540-04	70-42540-04	70-42540-04
69		Blower Mounting Angles (2)	AE-90708-01	AE-90708-01	AE-90708-01
		Blower Angle Stop	AE-90709-02	AE-90709-02	AE-90709-02
70		Motor Mount	AE-90710-04	AE-90710-04	AE-90710-04
71	Stk	Blower Motor - C/D Voltages	51-102826-14	51-102826-15	51-102826-06
72	Stk	Variable Sheave	71-42538-02	71-42538-02	71-40427-11
73	Stk	Belt	71-40438-27	71-40438-23	71-40438-31
74	Stk	Fixed Sheave	71-100774-02	71-100774-04	71-26254-06
		Key	94-42551-09	94-42551-09	94-42551-09
	Stk	Bushing for Sheave w/Screws	71-100773-01	71-100773-01	71-100773-01

No.	Notes	MODEL TECHNICAL VARIATION COOLING CAPACITY DRIVE PACKAGE	RKNL- G 090 T		
BLOWER ASSEMBLY GROUP - BELT DRIVE					
64	Stk	Blower Assembly (Includes Items 65-68)	AS-90757-01		
65	Stk	Blower Wheel	70-42540-02		
66		Bearing Frame Tri-Arm (2)	70-42540-05		
67		Bearing with Bearing Lock (2)	70-41854-02		
68	Stk	Blower Shaft	70-42540-04		
69		Blower Mounting Angles (2)	AE-90708-01		
		Blower Angle Stop	AE-90709-02		
70		Motor Mount	AE-90710-04		
71	Stk	Blower Motor - C/D Voltages	51-102826-15		
72	Stk	Variable Sheave	71-42538-02		
73	Stk	Belt	71-40438-23		
74	Stk	Fixed Sheave	71-100774-04		
		Key	94-42551-09		
	Stk	Bushing for Sheave w/Screws	71-100773-01		

No.	Notes	MODEL TECHNICAL VARIATION COOLING CAPACITY DRIVE PACKAGE	RKNL-	RKNL-	RKNL-
			G 180 R	G 240 R	G 300 R
BLOWER ASSEMBLY GROUP - BELT DRIVE					
64	Stk	Blower Assembly - Includes Items 65 and 66 (2)	AS-90757-06	AS-90757-06	AS-90757-06
65	Stk	Blower Wheel (2)	70-42564-02	70-42564-02	70-42564-02
66		Bearing Frame Tri-Arm (4)	70-42284-04	70-42284-04	70-42284-04
67		Bearing with Bearing Lock (4)	70-41854-02	70-41854-02	70-41854-02
68	Stk	Blower Shaft	70-42564-03	70-42564-03	70-42564-03
69		Blower Connector Angles (3)	AE-90798-01	AE-90798-01	AE-90798-01
70		Motor Mount	AE-90710-03	AE-90710-03	AE-90710-03
71	Stk	Blower Motor - C Voltage	51-102826-15	51-102826-06	51-102826-07
71	Stk	Blower Motor - D Voltage	51-102826-15	51-102826-06	51-102826-07
72	Stk	Variable Sheave	71-42538-02	71-40427-04	71-40427-59
73	Stk	Belt	71-40438-43	71-40438-51	71-40438-54
74a	Stk	Fixed Sheave	71-100774-08	71-100774-06	71-100774-06
74b		Key	94-42551-09	94-42551-09	94-42551-09
74c	Stk	Bushing for Sheave w/Screws	71-100773-01	71-100773-01	71-100773-01

No.	Notes	MODEL TECHNICAL VARIATION COOLING CAPACITY DRIVE PACKAGE	RKNL-	RKNL-	RKNL-
			G 180 S	G 240 S	G 300 S
BLOWER ASSEMBLY GROUP - BELT DRIVE					
64	Stk	Blower Assembly - Includes Items 65 and 66 (2)	AS-90757-06	AS-90757-06	AS-90757-06
65	Stk	Blower Wheel (2)	70-42564-02	70-42564-02	70-42564-02
66		Bearing Frame Tri-Arm (4)	70-42284-04	70-42284-04	70-42284-04
67		Bearing with Bearing Lock (4)	70-41854-02	70-41854-02	70-41854-02
68	Stk	Blower Shaft	70-42564-03	70-42564-03	70-42564-03
69		Blower Connector Angles (3)	AE-90798-01	AE-90798-01	AE-90798-01
70		Motor Mount	AE-90710-03	AE-90710-03	AE-90710-03
71	Stk	Blower Motor - C Voltage	51-102826-06	51-102826-07	51-102826-10
71	Stk	Blower Motor - D Voltage	51-102826-06	51-102826-07	51-102826-10
72	Stk	Variable Sheave	71-40427-04	71-40427-59	71-40427-60
73	Stk	Belt	71-40438-46	71-40438-54	71-102847-01
74a	Stk	Fixed Sheave	71-100774-08	71-100774-06	71-100774-07
74b		Key	94-42551-09	94-42551-09	94-42551-09
74c	Stk	Bushing for Sheave w/Screws	71-100773-01	71-100773-01	71-100773-01

No.	Notes	MODEL TECHNICAL VARIATION COOLING CAPACITY	RKNL- G 036	RKNL- G 048	RKNL- G 060
COIL GROUP					
EVAPORATOR COIL:					
6		Filter Keeper	AE-59168-01	AE-59168-01	AE-59168-01
77a	Stk	Evaporator Coil (Before F4613)	AS-102260-03	AS-102352-03	AS-102353-03
77a	Stk	Evaporator Coil (On or After F4613)	AS-102260-13	AS-102352-13	AS-102353-13
77b	Stk	Reheat Coil	65-101478-12	65-101478-12	65-101478-12
77c		TXV Bulb Strap Kit	64-101357-01	64-101357-01	64-101357-01
77d		Liquid Line Filter Drier	83-22755-03	83-22755-03	83-22755-03
77e	Stk	Servo Valve - Liquid Line (LLSV) (2)	61-103961-05	61-103961-05	61-103961-05
77f	Stk	Solenoid Coil (LLSV) (2)	61-103961-09	61-103961-09	61-103961-09
77g		Distributor - (Two way - 3/8 in. to 3/8 in.)	83-17467-02	83-17467-02	83-17467-02
80		Top Air Stop	AE-58933-01	AE-58933-01	AE-58933-01
		Air Stop - Reheat Coil	AE-104056-01	AE-104056-01	AE-104056-01
81		Top Coil Support	AE-58941-01	AE-58941-01	AE-58941-01
82		Filter Channels (Center is two channels back-to-back) (3)	AE-58934-01	AE-58934-01	AE-58934-01
83	Stk	Indoor Coil Drain Pan	68-23559-01	68-23559-01	68-23559-01
85		Filter - Disposable (2)	54-17531-10	54-17531-10	54-17531-10
88		Header Assembly	82-101745-01	82-101745-02	82-101745-03
Important Note: Different manufacturers of TXV were used on this unit, and the exact part number must be used when making repair. To obtain the correct part number of TXV either: 1) Provide the part number of TXV assembly by examining unit, or 2) Provide unit model number and TXV manufacturer. (See attached TXV identification guide for assistance.)					
89	Stk	TXV (Sporlan)	61-102257-01	61-102257-03	61-102257-04
89	Stk	TXV (Emerson)	61-102258-01	61-102258-03	61-102258-04
CONDENSER COIL:					
84a	Stk	Condenser Coil	AS-101714-03	AS-101716-01	AS-101717-01
84b	Stk	Servo Valve - Hot Gas (HGSV)	61-103961-01	61-103961-01	61-103961-01
84c	Stk	Solenoid Coil (HGSV)	61-103961-07	61-103961-07	61-103961-07
84d	Stk	Check Valve	83-102440-05	83-102440-05	83-102440-05

No.	Notes	MODEL TECHNICAL VARIATION COOLING CAPACITY	RKNL- G 090	RKNL- G 120	RKNL- G 151
COIL GROUP					
EVAPORATOR COIL GROUP:					
42a	Stk	Evaporator Coil	AS-90656-68	AS-90656-69	AS-90656-75
42b	Stk	Reheat Coil	65-101478-11	65-101478-11	65-101478-11
		TXV Bulb Strap Kit (2)	64-101357-01	64-101357-01	64-101357-01
42c		Liquid Line Filter Drier (2)	83-22755-05	83-22755-05	83-22755-05
42d		Strap - Filter Drier (2)	AE-102132-01	AE-102132-01	AE-102132-01
42e	Stk	Servo Valve - Liquid Line (LLSV) (2)	61-103961-05	61-103961-05	61-103961-05
42f	Stk	Solenoid Coil (LLSV) (2)	61-103961-09	61-103961-09	61-103961-09
		Bulb Strap Kit - TXV (2)	64-101357-01	64-101357-01	64-101357-01
42g	Stk	TXV - Circuit #1	61-101351-11	61-101351-13	61-101351-14
42h	Stk	TXV - Circuit #2	61-101351-11	61-101351-13	61-101351-14
43	Stk	Drain Pan - Removable	68-102699-02	68-102699-02	68-102699-02
FILTER PIECES:					
44		Filter Frame	AE-90606-11	AE-90606-11	AE-90606-11
45		Air Stop - Bottom	AE-102712-10	AE-102712-10	AE-102712-10
46		Air Stop - Side	AE-102712-06	AE-102712-06	AE-102712-06
47		Top Air Stop Assembly	AS-90604-06	AS-90604-06	AS-90604-06
48		Filter Channel (2)	AE-102712-08	AE-102712-08	AE-102712-08
49		Filter Slide (2)	AE-102712-11	AE-102712-11	AE-102712-11
		Filter (6)	54-42541-01	54-42541-01	54-42541-01
CONDENSER COIL GROUP:					
37a	Stk	Condenser Coil	AS-102704-03	AS-90656-42	65-101478-08
37b	Stk	Condenser Coil	AS-102704-03	AS-90656-42	65-101478-08
38		Front Air Stop	AE-90706-19	AE-90706-19	NA
39		Rear Air Stop	AE-90706-18	AE-90706-18	NA
40a,b		Bottom Retainer (2)	AE-90700-03	AE-90700-02	NA
40a		Micro-Channel Coil Mounting Base - Left	N/A	N/A	68-102752-01
40b		Micro-Channel Coil Mounting Base - Right	N/A	N/A	68-102752-02
41a		Top Support - Condenser Coil	AE-90612-09	AE-90612-02	AE-90612-31
41b		Top Support - Condenser Bulkhead	AE-90612-03	AE-90612-03	AE-90612-30
41c	Stk	Servo Valve - Hot Gas (HGSV)	61-103961-10	61-103961-10	61-103961-11
41d	Stk	Solenoid Coil (HGSV)	61-103961-13	61-103961-13	61-103961-13
	Stk	High Pressure Control (2)	47-23699-04	47-23699-04	47-103669-01
41e	Stk	Low Pressure Control (2)	47-101529-09	47-101529-09	47-101529-09
41f	Stk	Check Valve	83-102440-05	83-102440-05	83-102440-05
		Distributor (3/8 x 3/8 x 5/8)	83-17467-03	83-17467-03	NA

No.	Notes	MODEL TECHNICAL VARIATION COOLING CAPACITY	RKNL- G 180	RKNL- G 240	RKNL- G 300
COIL GROUP					
EVAPORATOR COIL GROUP:					
40		Air Flow Panel	AS-90828-02H	AS-90828-02H	AS-90828-02H
42a	Stk	Evaporator Coil	AS-102821-03	AS-102652-03	AS-102428-03
42b	Stk	Reheat Coil	65-101478-13	65-101478-13	65-101478-13
42c	Stk	Servo Valve - Liquid Line (LLSV)	61-103961-08	61-103961-08	61-103961-08
42d	Stk	Servo Valve - Liquid Line (LLSV)	61-103961-08	61-103961-08	61-103961-15
42e	Stk	Solenoid Coil (LLSV) (2)	61-103961-09	61-103961-09	61-103961-09
42f	Stk	TXV/Distributor Assembly - Circuit #1	61-102845-01	61-102687-01	61-102815-01
42g	Stk	TXV/Distributor Assembly - Circuit #2	61-102845-01	61-102687-01	61-102815-01
43	Stk	Drain Pan - Removable	68-102699-01	68-102699-01	68-102699-01
FILTER PIECES:					
44		Filter Frame	AE-90606-10	AE-90606-10	AE-90606-10
45		Air Stop - Bottom	AE-102712-17	AE-102712-17	AE-102712-17
46		Air Stop - Side	AE-102712-14	AE-102712-14	AE-102712-14
47		Top Air Stop Assembly	AS-90604-04	AS-90604-04	AS-90604-04
48		Filter Channel (2)	AE-102712-16	AE-102712-16	AE-102712-16
49		Filter Slide (2)	AE-102712-15	AE-102712-15	AE-102712-15
50		Filter - 20 in. x 25 in. x 2 in. (8)	54-42541-04	54-42541-04	54-42541-04
CONDENSER COIL:					
37	Stk	Condenser Coil Assembly (2)	AS-102647-03	AS-102666-03	AS-102666-03
38a		Air Stop - Front	AE-90706-13	AE-90706-13	AE-90706-13
38b		Corner Brace - Top Front	AS-90706-16H	AS-90706-16H	AS-90706-16H
38c		Post - Outdoor Coil (Front)	AS-90706-14H	AS-90706-14H	AS-90706-14H
39a		Air Stop - Rear	AE-90706-12	AE-90706-12	AE-90706-12
39b		Corner Brace - Top Rear	AS-90706-17H	AS-90706-17H	AS-90706-17H
39c		Post - Outdoor Coil (Rear)	AS-90706-15H	AS-90706-15H	AS-90706-15H
41		Air Stop- Top Right	AS-90753-08H	AS-90753-08H	AS-90753-08H
41a		Top Support - Inner Condenser Coil (2)	AE-90612-21	AE-90612-08	AE-90612-08
41b		Top Support - Outer Condenser Coil	AE-90612-20	AE-90612-11	AE-90612-11
41c		Top Support - Condenser Bulkhead	AE-90612-18	AE-90612-06	AE-90612-06
41d	Stk	High Pressure Control (2)	47-23699-04	47-23699-04	47-23699-04
41e	Stk	Low Pressure Control (2)	47-101529-09	47-101529-09	47-101529-09
41f	Stk	Check Valve	83-102440-02	83-102440-02	83-102440-02
41g		Filter Drier - Liquid Line (2)	83-22755-11	83-22755-11	83-22755-11
41h	Stk	Servo Valve - Hot Gas (HGVS)	61-103961-12	61-103961-11	61-103961-14
41i	Stk	Solenoid Coil (HGVS)	61-103961-13	61-103961-13	61-103961-13

No.	Notes	MODEL TECHNICAL VARIATION COOLING CAPACITY ELECTRICAL DESIGNATION	RKNL- G 036 C	RKNL- G 048 C	RKNL- G 060 C
COMPRESSOR GROUP					
		Compressor ID:	8539	8541	8543
86	Stk	Compressor	55-102045-05S	55-102045-11S	55-102045-22S
40	Stk	Contactora	42-102664-08	42-102664-08	42-102664-08
	Stk	Compressor Wiring Harness - Molded Plug	45-100834-10	45-100834-10	45-100834-10

No.	Notes	MODEL TECHNICAL VARIATION COOLING CAPACITY ELECTRICAL DESIGNATION	RKNL- G 036 D	RKNL- G 048 D	RKNL- G 060 D
COMPRESSOR GROUP					
		Compressor ID:	8540	8542	8544
86	Stk	Compressor	55-102045-04S	55-102045-10S	55-102045-23S
40	Stk	Contactora	42-102664-08	42-102664-08	42-102664-08
	Stk	Compressor Wiring Harness - Molded Plug	45-100834-10	45-100834-10	45-100834-10

No.	Notes	MODEL	RKNL- G 090 C	RKNL- G 120 C	RKNL- G 151 C
		TECHNICAL VARIATION COOLING CAPACITY ELECTRICAL DESIGNATION			
COMPRESSOR GROUP					
		Compressor ID:	8531	8535	8633
75	Stk	Compressor #1	55-102045-08S	55-102045-27S	55-102471-21S
75	Stk	Compressor #2	55-102045-08S	55-102045-27S	55-102471-21S
		Contactactor - Compressor	See Electric Group		
	Stk	Plug Harness - Compressor #1	45-102708-01	45-102708-01	45-102708-03
	Stk	Plug Harness - Compressor #2	45-102708-02	45-102708-02	45-102708-04

No.	Notes	MODEL	RKNL- G 090 D	RKNL- G 120 D	RKNL- G 151 D
		TECHNICAL VARIATION COOLING CAPACITY ELECTRICAL DESIGNATION			
COMPRESSOR GROUP					
		Compressor ID:	8532	8536	8634
75	Stk	Compressor #1	55-102045-07S	55-102045-28S	55-102471-22S
75	Stk	Compressor #2	55-102045-07S	55-102045-28S	55-102471-22S
		Contactactor - Compressor	See Electric Group		
	Stk	Plug Harness - Compressor #1	45-102708-01	45-102708-01	45-102708-03
	Stk	Plug Harness - Compressor #2	45-102708-02	45-102708-02	45-102708-04

No.	Notes	MODEL TECHNICAL VARIATION COOLING CAPACITY ELECTRICAL DESIGNATION	RKNL- G 180 C	RKNL- G 240 C	RKNL- G 300 C
COMPRESSOR GROUP					
		Compressor:	8551	8553	8584
75	Stk	Compressor #1	55-23156-20S	55-102471-02S	55-102471-13S
75	Stk	Compressor #2	55-23156-20S	55-102471-03S	55-102471-13S
	Stk	Plug Harness - Compressor #1	45-42522-73	45-42522-73	45-42522-73
	Stk	Plug Harness - Compressor #2	45-42522-72	45-42522-72	45-42522-72
		High Pressure Control	See Coil Group		
		Low Pressure Control	See Coil Group		

No.	Notes	MODEL TECHNICAL VARIATION COOLING CAPACITY ELECTRICAL DESIGNATION	RKNL- G 180 D	RKNL- G 240 D	RKNL- G 300 D
COMPRESSOR GROUP					
		Compressor:	8552	8554	8585
75	Stk	Compressor #1	55-23156-21S	55-102471-09S	55-102471-08S
75	Stk	Compressor #2	55-23156-21S	55-102471-07S	55-102471-08S
	Stk	Plug Harness - Compressor #1	45-42522-73	45-42522-73	45-42522-73
	Stk	Plug Harness - Compressor #2	45-42522-72	45-42522-72	45-42522-72
		High Pressure Control	See Coil Group		
		Low Pressure Control	See Coil Group		

No.	Notes	MODEL TECHNICAL VARIATION COOLING CAPACITY HEATING CAPACITY	RKNL- G 036-060 08	RKNL- G 036-060 10	RKNL- G 036-060 12	RKNL- G 036-060 13
HEAT EXCHANGER, BURNER/MANIFOLD						
45	Stk	Main Limit - (Condenser Bulkhead) E - Electric	47-23610-19	47-23610-21	47-23610-27	47-23610-19
45	Stk	Main Limit - (Condenser Bulkhead) X - Nox	N/A	N/A	N/A	N/A
46		Main Limit Shield	AS-59152-01	AS-59152-01	AS-59152-01	AS-59152-01
87	Stk	Heat Exchanger - Includes Center Panel	AS-59066-01	AS-59066-05	AS-59066-04	AS-59066-04
88		Turbulators	AE-58922-01 (4)	AE-58922-01 (5)	AE-58922-01 (6)	AE-58922-01 (6)
89		NOX Inserts	N/A	N/A	N/A	N/A
90		Divider Plate Gasket	68-23680-02	68-23680-02	68-23680-02	68-23680-02
91		Divider Plate	AE-59067-01	AE-59067-01	AE-59067-01	AE-59067-01
92		Collector Box Gasket	68-23680-01	68-23680-01	68-23680-01	68-23680-01
93		Collector Box Cover	AE-59068-01	AE-59068-02	AE-59068-06	AE-59068-03
94		Flue Duct	75-23678-01	75-23678-01	75-23678-01	75-23678-01
95		Flue Duct Gasket	68-23680-03	68-23680-03	68-23680-03	68-23680-03
96		Burner Shield	AE-58886-01	AE-58886-01	AE-58886-01	AE-58886-01
97	Stk	Limit (Manual Reset)	47-22861-02 (1)	47-22861-02 (2)	47-22861-02 (2)	47-22861-02 (2)
98		Burner Compartment Floor	AE-58932-02	AE-58932-02	AE-58932-02	AE-58932-02

No.	Notes	MODEL TECHNICAL VARIATION COOLING CAPACITY HEATING CAPACITY	RKNL- G 036-060 08	RKNL- G 036-060 10	RKNL- G 036-060 12	RKNL- G 036-060 13
BURNER / MANIFOLD GROUP						
99	Stk	Burner Assembly	AS-60993-04	AS-60993-05	AS-60993-06	AS-60993-06
99a		Bushing	45-42519-01	45-42519-01	45-42519-01	45-42519-01
100		Burner Support - (Holds the Burners between the Burner Support Brackets)	AE-102650-01	AE-102650-01	AE-102650-01	AE-102650-01
101		Burner Support Bracket (2)	AE-61588-02	AE-61588-02	AE-61588-02	AE-61588-02
102	Stk	Manifold Assembly (w/o Orifices)	81-101153-01	81-101153-01	81-101153-01	81-101153-01
103		Square Head Plug - (Used on Manifold to plug extra holes)	81-23593-01 (3)	81-23593-01 (2)	81-23593-01 (1)	81-23593-01 (1)
104		Burner Orifice - Natural Gas:	See Orifice Selection Chart			
104		Burner Orifice - LP:	See Orifice Selection Chart			
104		Number of Orifices	(4)	(5)	(6)	(6)
	Stk	Pressure Switch	42-24335-20	42-24335-20	42-24335-20	42-24335-20
105	Stk	Flame Sensor	62-23543-02	62-23543-02	62-23543-02	62-23543-02
106	Stk	Ignition Electrode and Cable	62-23556-01	62-23556-01	62-23556-01	62-23556-01

No.	Notes	MODEL	RKNL- G 090/120/151 15	RKNL- G 090/120 22	RKNL- G 151 25
		TECHNICAL VARIATION COOLING CAPACITY HEATING CAPACITY			
HEAT EXCHANGER, BURNER / MANIFOLD					
98	Stk	Heat Exchanger	AS-90645-01	AS-90645-03	AS-90645-03
99		Inducer Mounting Plate Gasket	68-42518-02	68-42518-02	68-42518-02
100		Turbulators	AE-58922-01 (6)	AE-58922-01 (9)	AE-58922-01 (9)
101		Inducer Mounting Plate	AE-90675-03	AE-90675-02	AE-90675-04
102		Inducer Blower Gasket (2)	68-23643-02	68-23643-02	68-23643-02
103		Burner Support Brackets (2)	AE-90642-02	AE-90642-02	AE-90642-02
104		Burner Support	AE-90643-01	AE-90643-01	AE-90643-01
105	Stk	Spark Ignitor	62-23556-08	62-23556-08	62-23556-08
106	Stk	Burner Assembly	AS-90772-01	AS-90772-02	AS-90772-02
107		Burner Orifices - Natural Gas	See Orifice Selection Chart		
107		Burner Orifices - LP	See Orifice Selection Chart		
107		Number of Orifices	(6)	(9)	(9)
108		Square Head Plug	81-23593-01 (4)	81-23593-01 (1)	81-23593-01 (1)
109	Stk	Manifold	81-42509-03	81-42509-02	81-42509-02
110		Gas Valve	See Gas Controls		
111		Street Elbow - 1/2 in. 90 degree	81-40271-04	N/A	N/A
112	Stk	Flame Sensor	62-23543-02	62-23543-02	62-23543-02
113a,b	Stk	Pressure Switch (2)	42-24335-25	42-24335-23	42-24335-23
114		Pressure Switch Mounting Bracket (Single Mount) (2)	AE-90635-05	AE-90635-05	AE-90635-05
115		Heat Shield	AE-90644-02	AE-90644-02	AE-90644-02
116	Stk	Limit - Manual Reset (Burner Compartment) (2)	47-22861-01	47-22861-01	47-22861-01
117	Stk	Induced Draft Blower w/Gasket (2) - C Voltage	70-23641-01	70-23641-01	70-23641-01
117	Stk	Induced Draft Blower w/Gasket (2) - D Voltage	70-23641-02	70-23641-02	70-23641-02
118		Flue Duct (2)	75-23678-01	75-23678-01	75-23678-01
	Stk	Limit - Main Limit (Heat Exchanger Panel)	47-25349-09	47-25349-02	47-25349-04

No.	Notes	MODEL TECHNICAL VARIATION COOLING CAPACITY ELECTRICAL DESIGNATION HEATING CAPACITY	RKNL-	RKNL-	RKNL-	RKNL-
			G 180 C 25	G 180 D 25	G 180 C 35	G 180 D 35
HEAT EXCHANGER, BURNER / MANIFOLD						
	Stk	Heat Exchanger	AS-90645-12	AS-90645-12	AS-90645-15	AS-90645-15
		Inducer Mounting Plate Gasket	68-42518-03	68-42518-03	68-42518-03	68-42518-03
		Turbulators	AE-58922-02 (10)	AE-58922-02 (10)	AE-58922-02 (14)	AE-58922-02 (14)
		Inducer Mounting Plate	AE-90675-08	AE-90675-08	AE-90675-06	AE-90675-06
		Inducer Blower Gasket (2)	68-23643-02	68-23643-02	68-23643-02	68-23643-02
103		Burner Support Brackets (2)	AE-90642-02	AE-90642-02	AE-90642-02	AE-90642-02
104		Burner Support	AS-90830-01	AS-90830-01	AS-90830-01	AS-90830-01
105	Stk	Spark Ignitor	62-23556-10	62-23556-10	62-23556-10	62-23556-10
106	Stk	Burner Assembly	AS-90641-29	AS-90641-29	AS-90641-30	AS-90641-30
107		Burner Orifices - Natural Gas	See Orifice Selection Chart			
107		Burner Orifices - LP	See Orifice Selection Chart			
107		Number of Orifices	(10)	(10)	(14)	(14)
108		Square Head Plug	81-23593-01 (3)	81-23593-01 (3)	81-23593-01 (1)	81-23593-01 (1)
109	Stk	Manifold	81-42509-07	81-42509-07	81-42509-04	81-42509-04
110		Gas Valve	See Gas Controls			
111		Street Elbow - 3/4 in. 90 degree	81-40271-05	81-40271-05	81-40271-05	81-40271-05
		Nipple - 3/4 in. x 2-1/2 in.	81-40383-04	81-40383-04	81-40383-04	81-40383-04
		Standard Elbow - 3/4 in.	81-40394-05	81-40394-05	N/A	N/A
		Standard Elbow - 1 in. x 3/4 in. 90 degree	N/A	N/A	81-40394-24	81-40394-24
112	Stk	Flame Sensor	62-23543-02	62-23543-02	62-23543-02	62-23543-02
	Stk	Pressure Switch - High	42-24335-23 (1)	42-24335-23 (1)	42-24335-23 (1)	42-24335-23 (1)
	Stk	Pressure Switch - Low	42-24335-24 (1)	42-24335-24 (1)	42-24335-24 (2)	42-24335-24 (2)
		Pressure Switch Mounting Bracket (Single Mount)	AE-90635-05 (1)	AE-90635-05 (1)	AE-90635-05 (2)	AE-90635-05 (2)
		Pressure Switch Mounting Bracket (Dual Mount)	AE-90635-04	AE-90635-04	AE-90635-04	AE-90635-04
115		Heat Shield	AE-90644-03	AE-90644-03	AE-90644-03	AE-90644-03
116	Stk	Limit - Manual Reset (Burner Compartment) (4)	47-22861-01	47-22861-01	47-22861-01	47-22861-01
	Stk	Induced Draft Blower w/Gasket	70-23641-01 (2)	70-23641-02 (2)	70-23641-01 (3)	70-23641-02 (3)
		Flue Duct (2)	75-23678-01	75-23678-01	75-23678-01	75-23678-01
	Stk	Limit - Main Limit (Heat Exchanger Panel)	47-25349-09	47-25349-09	47-25349-03	47-25349-03

No.	Notes	MODEL TECHNICAL VARIATION COOLING CAPACITY ELECTRICAL DESIGNATION HEATING CAPACITY	RKNL-	RKNL-	RKNL-	RKNL-
			G 240 C 30	G 240 D 30	G 240 C 40	G 240 D 40
HEAT EXCHANGER, BURNER / MANIFOLD						
	Stk	Heat Exchanger	AS-90645-16	AS-90645-16	AS-90645-15	AS-90645-15
		Inducer Mounting Plate Gasket	68-42518-03	68-42518-03	68-42518-03	68-42518-03
		Turbulators	AE-58922-02 (12)	AE-58922-02 (12)	AE-58922-02 (14)	AE-58922-02 (14)
		Inducer Mounting Plate	AE-90675-07	AE-90675-07	AE-90675-05	AE-90675-05
		Inducer Blower Gasket (2)	68-23643-02	68-23643-02	68-23643-02	68-23643-02
103		Burner Support Brackets (2)	AE-90642-02	AE-90642-02	AE-90642-02	AE-90642-02
104		Burner Support	AS-90830-01	AS-90830-01	AS-90830-01	AS-90830-01
105	Stk	Spark Ignitor	62-23556-10	62-23556-10	62-23556-10	62-23556-10
106	Stk	Burner Assembly	AS-90641-31	AS-90641-31	AS-90641-25	AS-90641-25
107		Burner Orifices - Natural Gas	See Orifice Selection Chart			
107		Burner Orifices - LP	See Orifice Selection Chart			
107		Number of Orifices	(12)	(12)	(14)	(14)
108		Square Head Plug	81-23593-01 (1)	81-23593-01 (1)	81-23593-01 (1)	81-23593-01 (1)
109	Stk	Manifold	81-42509-07	81-42509-07	81-42509-04	81-42509-04
110		Gas Valve	See Gas Controls			
111		Street Elbow - 3/4 in. 90 degree	81-40271-05	81-40271-05	81-40271-05	81-40271-05
		Nipple - 3/4 in. x 2-1/2 in.	81-40383-04	81-40383-04	81-40383-04	81-40383-04
		Standard Elbow - 3/4 in.	81-40394-05	81-40394-05	N/A	N/A
		Standard Elbow - 1 in. x 3/4 in. 90 degree	N/A	N/A	81-40394-24	81-40394-24
112	Stk	Flame Sensor	62-23543-02	62-23543-02	62-23543-02	62-23543-02
	Stk	Pressure Switch - High	42-24335-21 (1)	42-24335-21 (1)	42-24335-23 (2)	42-24335-23 (2)
	Stk	Pressure Switch - Low	42-24335-24 (2)	42-24335-24 (2)	42-24335-24 (2)	42-24335-24 (2)
		Pressure Switch Mounting Bracket (Single Mount)	AE-90635-05 (2)	AE-90635-05 (2)	AE-90635-05 (2)	AE-90635-05 (2)
		Pressure Switch Mounting Bracket (Dual Mount)	AE-90635-04	AE-90635-04	AE-90635-04	AE-90635-04
115		Heat Shield	AE-90644-03	AE-90644-03	AE-90644-03	AE-90644-03
116	Stk	Limit - Manual Reset (Burner Compartment) (4)	47-22861-01	47-22861-01	47-22861-01	47-22861-01
	Stk	Induced Draft Blower w/Gasket	70-23641-01 (3)	70-23641-02 (3)	70-23641-01 (4)	70-23641-02 (4)
		Flue Duct (2)	75-23678-01	75-23678-01	75-23678-01	75-23678-01
	Stk	Limit - Main Limit (Heat Exchanger Panel)	47-25349-14	47-25349-14	47-25349-14	47-25349-14

No.	Notes	MODEL TECHNICAL VARIATION COOLING CAPACITY ELECTRICAL DESIGNATION HEATING CAPACITY	RKNL-	RKNL-	RKNL-	RKNL-
			G 300 C 30	G 300 D 30	G 300 C 40	G 300 D 40
HEAT EXCHANGER, BURNER / MANIFOLD						
	Stk	Heat Exchanger	AS-90645-16	AS-90645-16	AS-90645-15	AS-90645-15
		Inducer Mounting Plate Gasket	68-42518-03	68-42518-03	68-42518-03	68-42518-03
		Turbulators	AE-58922-02 (12)	AE-58922-02 (12)	AE-58922-02 (14)	AE-58922-02 (14)
		Inducer Mounting Plate	AE-90675-07	AE-90675-07	AE-90675-05	AE-90675-05
		Inducer Blower Gasket (2)	68-23643-02	68-23643-02	68-23643-02	68-23643-02
103		Burner Support Brackets (2)	AE-90642-02	AE-90642-02	AE-90642-02	AE-90642-02
104		Burner Support	AS-90830-01	AS-90830-01	AS-90830-01	AS-90830-01
105	Stk	Spark Ignitor	62-23556-10	62-23556-10	62-23556-10	62-23556-10
106	Stk	Burner Assembly	AS-90641-31	AS-90641-31	AS-90641-25	AS-90641-25
107		Burner Orifices - Natural Gas	See Orifice Selection Chart			
107		Burner Orifices - LP	See Orifice Selection Chart			
107		Number of Orifices	(12)	(12)	(14)	(14)
108		Square Head Plug	81-23593-01 (1)	81-23593-01 (1)	81-23593-01 (1)	81-23593-01 (1)
109	Stk	Manifold	81-42509-07	81-42509-07	81-42509-04	81-42509-04
110		Gas Valve	See Gas Controls			
111		Street Elbow - 3/4 in. 90 degree	81-40271-05	81-40271-05	81-40271-05	81-40271-05
		Nipple - 3/4 in. x 2-1/2 in.	81-40383-04	81-40383-04	81-40383-04	81-40383-04
		Standard Elbow - 3/4 in.	81-40394-05	81-40394-05	N/A	N/A
		Standard Elbow - 1 in. x 3/4 in. 90 degree	N/A	N/A	81-40394-24	81-40394-24
112	Stk	Flame Sensor	62-23543-02	62-23543-02	62-23543-02	62-23543-02
	Stk	Pressure Switch - High	42-24335-21 (1)	42-24335-21 (1)	42-24335-23 (2)	42-24335-23 (2)
	Stk	Pressure Switch - Low	42-24335-24 (2)	42-24335-24 (2)	42-24335-24 (2)	42-24335-24 (2)
		Pressure Switch Mounting Bracket (Single Mount)	AE-90635-05 (2)	AE-90635-05 (2)	AE-90635-05 (2)	AE-90635-05 (2)
		Pressure Switch Mounting Bracket (Dual Mount)	AE-90635-04	AE-90635-04	AE-90635-04	AE-90635-04
115		Heat Shield	AE-90644-03	AE-90644-03	AE-90644-03	AE-90644-03
116	Stk	Limit - Manual Reset (Burner Compartment) (4)	47-22861-01	47-22861-01	47-22861-01	47-22861-01
	Stk	Induced Draft Blower w/Gasket	70-23641-01 (3)	70-23641-02 (3)	70-23641-01 (4)	70-23641-02 (4)
		Flue Duct (2)	75-23678-01	75-23678-01	75-23678-01	75-23678-01
	Stk	Limit - Main Limit (Heat Exchanger Panel)	47-25349-09	47-25349-09	47-25349-03	47-25349-03

No.	Notes	MODEL GAS CODE	RKNL- 2S	RKNL- 2R
GAS CONTROLS				
	Stk	Gas Valve - Natural Gas	60-100394-02	60-23490-01
	Stk	Gas Valve - LP	See Note 1	See Note 1
	Stk,3	Integrated Furnace Control Board (IFC)	62-102860-02	62-102860-02
		Street Elbow	81-17487-01	81-40271-04
		Nipple	81-40683-02	N/A
	Stk	LP Conversion Kit	EP-85H	EP-84W

No.	Notes	MODEL GAS CODE	RKNL- 2P	RKNL- 2Q
GAS CONTROLS				
110	Stk	Gas Valve - Natural Gas	60-101778-01	60-102405-01
110	Stk	Gas Valve - LP	See Note 1	See Note 2
	Stk,3	Integrated Furnace Control Board (IFC)	62-102860-02	62-102860-02
111		Street Elbow	See Heat Exchanger Group	
	Stk	LP Conversion Kit	FP-14	FP-24

No.	Notes	MODEL TECHNICAL VARIATION COOLING CAPACITY	RKNL- G 036-060
OPTIONS AND ACCESSORIES			
		DDC Economizer with Single Enthalpy and Barometric Relief	AXRD-TKCM3
		DDC Economizer with Single Enthalpy, Smoke Detector and Barometric Relief	AXRD-UKCM3
		Non-Powered Convenience Outlet	RXR-AN02
		Service Disconnect	RXR-AP02
		Dual Enthalpy Kit	RXR-AV03
		CO2 Sensor	RXR-AR02
		Power Exhaust - C Voltage	AXR-BGF04C
		Power Exhaust - D Voltage	AXR-BGF04D
		Fresh Air Damper Manual	AXR-FBA1
		Fresh Air Damper Motorized	AXR-FBB1
		Louver Kit - (3 Sides)	AXR-AAD01B
		Comfort Alert	RXR-AZ01
		BACnet Communication Card	RXR-AY01
		Lonworks Communication Card	RXR-AY02
		Low Ambient Control	RXR-A04
		Room Humidity Sensor	RHC-ZNS4
		Room Temperature and Relative Humidity Sensor	RHC-ZNS5

No.	Notes	MODEL TECHNICAL VARIATION COOLING CAPACITY	RKNL- G 090-151
ACCESSORIES			
		Louver Panel - Option	AXR-AAD01C
		Carbon Dioxide Sensor	RXR-AR02
		Dual Enthalpy Kit	RXR-AV03
		Manual Fresh Air (Left Panel Mounted)	RXR-KDA1
		Motor Kit for AXR-KDA1	RXR-AW02
		Manual Fresh Air Damper (Horizontal Return Mounted)	AXR-JDA1
		Motorized Fresh Air Damper (Horizontal Return Mounted)	AXR-JDB1
		Modulating Motor Kit w/position feedback for AXR-KDA1	RXR-AW04
		Outdoor Coil Louver Kit	AXR-AAD01C
		Comfort Alert	RXR-AZ01
		Unfused Service Disconnect	RXR-AP01
		Convenience Outlet - Option	RXR-AN01
		Low Ambient Control Kit (One per Compressor)	RXR-C02
		BACnet Communication Card	RXR-AY01
		LonWorks Communication Card	RXR-AY02
		Room Humidity Sensor	RHC-ZNS4
		Room Temperature and Relative Humidity Sensor	RHC-ZNS5

No.	Notes	MODEL TECHNICAL VARIATION COOLING CAPACITY	RKNL- G 090-151
ECONOMIZERS			
		Economizer w/Single Enthalpy (Downflow)	AXR-PJCM3
		Economizer - Horizontal w/Single Enthalpy	AXR-RJCM3
		Economizer w/Single Enthalpy and Smoke Detector (Downflow)	AXR-SJCM3

No.	Notes	MODEL TECHNICAL VARIATION COOLING CAPACITY	RKNL- G 090-151
POWER EXHAUST			
		Power Exhaust	RXR-BFF02C
		Power Exhaust	RXR-BFF02D
		Power Exhaust	RXR-BFF02Y

No.	Notes	MODEL TECHNICAL VARIATION COOLING CAPACITY	RKNL- G 180-300
ACCESSORIES			
		Carbon Dioxide Sensor	RXR-AR02
		Dual Enthalpy Kit	RXR-AV02
		Manual Fresh Air Damper (Granite/Steel Gray)	AXRF-KFA1
		Motorized Kit for RXRF-KFA1/AXRF-KFA1	RXR-AW03
		Freeze Stat Kit	RXR-AM03
		Unwired Convenience Outlet	RXR-AN01
		Unfused Service Disconnect	RXR-AP01
		Low Ambient Control Kit (One per Compressor)	RXRZ-C02
		Louver Panel Kit (Hail Guard) - Left and Right (Granite/Steel Gray)	AXR-AAD01L

No.	Notes	MODEL TECHNICAL VARIATION COOLING CAPACITY	RKNL- G 180-300
ECONOMIZERS			
		Economizer - w/Single Enthalpy (DDC)	AXRD-PMCM3
		Economizer - w/Smoke Detector (DDC)	AXRD-SMCM3

No.	Notes	MODEL TECHNICAL VARIATION COOLING CAPACITY	RKNL- G 180-300
POWER EXHAUST			
		Power Exhaust	RXR-BGF05C
		Power Exhaust	RXR-BGF05D
		Power Exhaust	RXR-BGF05Y

PACKAGE EQUIPMENT - ORIFICE SELECTION CHART - NATURAL GAS

CAUTION: Selection of the correct Natural Gas Orifice requires the following information for the specific installation:

- 1) Furnace Input Rating (BTU/HR)
- 2) Number of Burners
- 2) Altitude (ft.)

For detailed information and instructions for Orifice selection, see the Gas Furnace LP Conversion Kit Index 92-21519-47 and the latest edition of the National Fuel Gas Code Handbook, or the National Standard of Canada, Natural Gas and Propane Installation Code, CAN B149.1.

CAUTION: This information is provided for replacement purposes only. Conversion for operation at High Altitude must be done using the kit specified on the product specification sheet for the unit.

NOTE: This Orifice sizing chart is based on a Natural Gas heating value of 1075 BTU/cu. ft and a pressure setting of 3.5 in. water column.

NOTE: Factory installed orifices are calculated and sized based on a Natural Gas heating value of 1075 BTU/cu. ft. and an elevation of 0 - 2000 ft.

Furnace Input Rating (BTU/HR)	Canadian High Altitude Derated Input (BTU/HR)	Number of Burners	Elevation (ft.)					
			Country					
			0 - 2000 U.S.	2001 - 4000 U.S.	4001 - 6000 U.S.	8000+ U.S.	0 - 2000 Canada	2001 - 4500 Canada
40,000	36,000	2	62-22175-45	62-22175-47	62-22175-48	62-22175-49	62-22175-45	62-22175-15
60,000	54,000	3	62-22175-45	62-22175-47	62-22175-48	62-22175-49	62-22175-45	62-22175-15
72,000	N/A	4	62-22175-15	62-22175-49	62-22175-50	62-22175-51	62-22175-15	N/A
80,000	72,000	4	62-22175-45	62-22175-47	62-22175-48	62-22175-49	62-22175-45	62-22175-15
90,000	N/A	5	62-22175-15	62-22175-49	62-22175-50	62-22175-51	62-22175-15	N/A
100,000	90,000	5	62-22175-45	62-22175-47	62-22175-48	62-22175-49	62-22175-45	62-22175-15
120,000	108,000	6	62-22175-45	62-22175-47	62-22175-48	62-22175-49	62-22175-45	62-22175-15
135,000	121,500	6	62-22175-44	62-22175-45	62-22175-47	62-22175-48	62-22175-44	62-22175-45
150,000	135,000	6	62-22175-42	62-22175-43	62-22175-44	62-22175-45	62-22175-42	62-22175-44
180,000	N/A	9	62-22175-45	62-22175-47	62-22175-48	62-22175-49	62-22175-45	N/A
210,000	N/A	9	62-22175-43	62-22175-44	62-22175-45	62-22175-47	62-22175-43	N/A
210,000	N/A	10	62-22175-45	62-22175-47	62-22175-48	62-22175-49	62-22175-45	N/A
225,000	202,500	9	62-22175-42	62-22175-43	62-22175-44	62-22175-45	62-22175-42	62-22175-44
250,000	225,000	10	62-22175-42	62-22175-43	62-22175-44	62-22175-45	62-22175-42	62-22175-44
252,000	225,000	9	62-22175-40	62-22175-42	62-22175-43	62-22175-44	62-22175-40	62-22175-42
252,000	N/A	12	62-22175-45	62-22175-47	62-22175-48	62-22175-49	62-22175-45	N/A
290,000	N/A	14	62-22175-45	62-22175-47	62-22175-48	62-22175-49	62-22175-45	N/A
300,000	270,000	12	62-22175-42	62-22175-43	62-22175-44	62-22175-45	62-22175-42	62-22175-44
330,000	N/A	14	62-22175-43	62-22175-44	62-22175-45	62-22175-47	62-22175-43	N/A
350,000	315,000	14	62-22175-42	62-22175-43	62-22175-44	62-22175-45	62-22175-42	62-22175-44
400,000	360,000	14	62-22175-40	62-22175-42	62-22175-43	62-22175-44	62-22175-40	62-22175-42

PACKAGE EQUIPMENT - ORIFICE SELECTION CHART - LP

CAUTION: Selection of the correct LP Orifice requires the following information for the specific installation:

- 1) Furnace Input Rating (BTU/HR)
- 2) Number of Burners
- 2) Altitude (ft.)

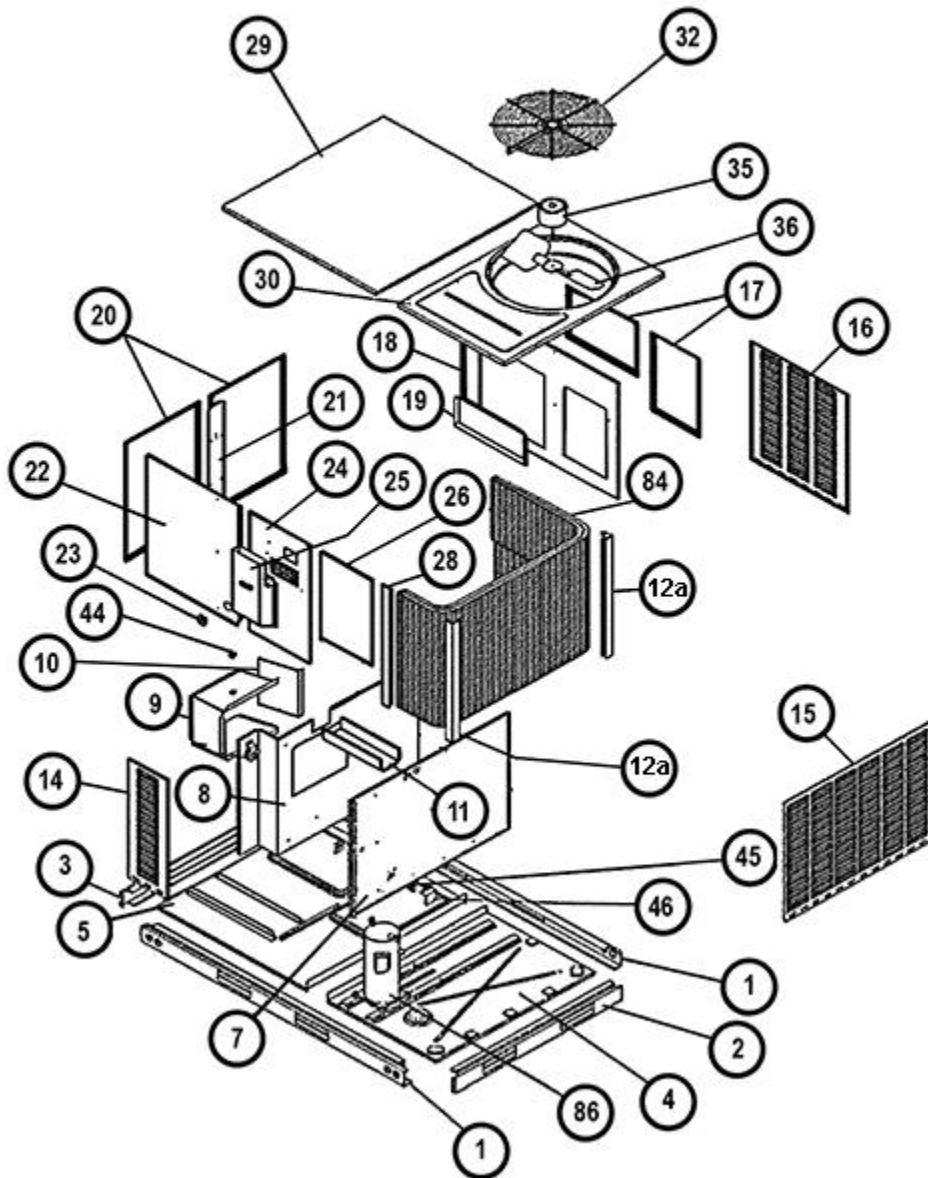
For detailed information and instructions for Orifice selection, see the Gas Furnace LP Conversion Kit Index 92-21519-47 and the latest edition of the National Fuel Gas Code Handbook, or the National Standard of Canada, Natural Gas and Propane Installation Code, CAN B149.1.

CAUTION: This information is provided for replacement purposes only. Conversion to LP or for operation at High Altitude should be done using the kit(s) specified on the product specification sheet for the unit.

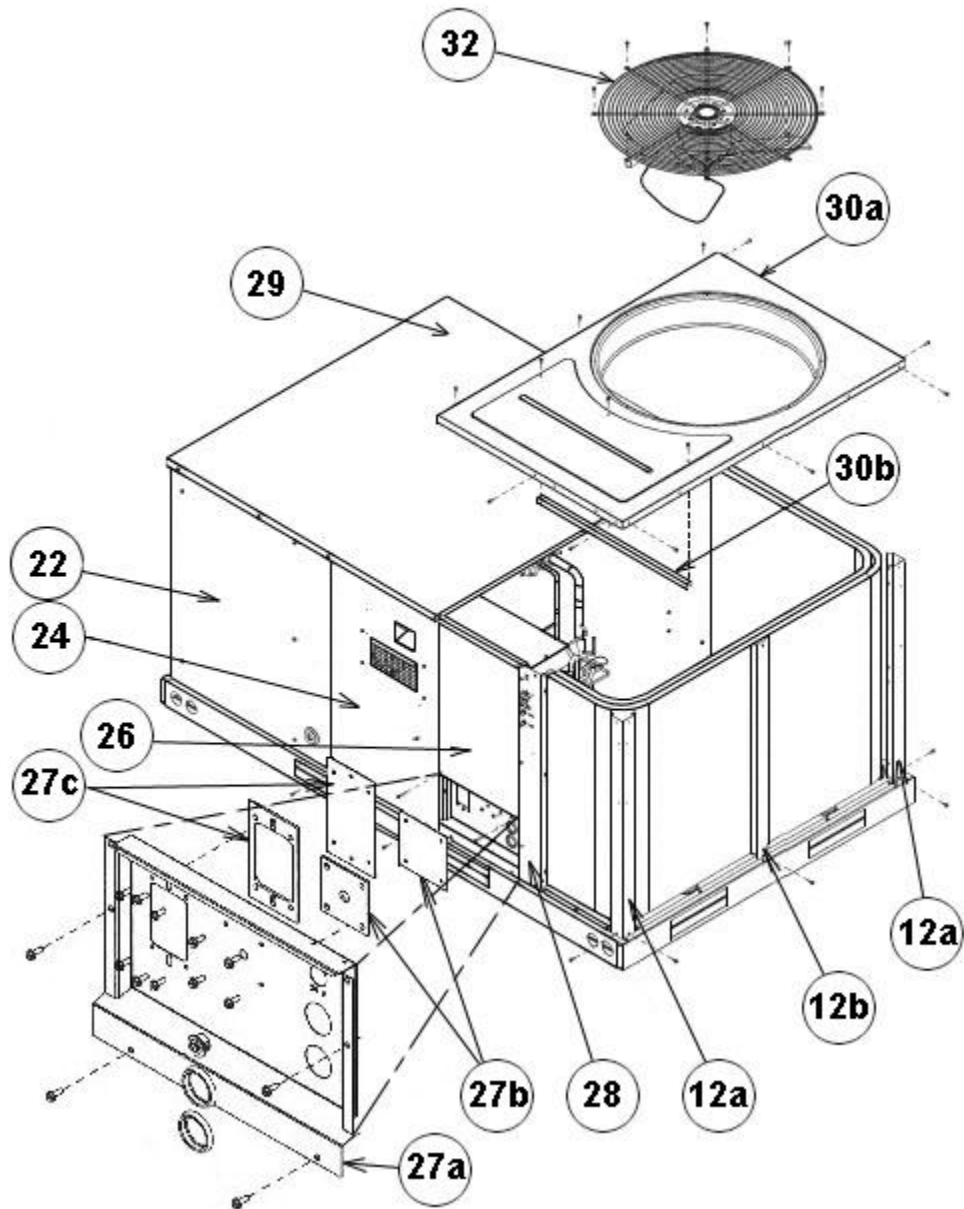
NOTE: This Orifice sizing chart is developed using the specified pressure setting of 10 in. water column instead of the 11.0 in water column used by the NFG and CANB149.1.

NOTE: Orifices supplied in the LP Conversion Kit are calculated and sized based on a heating value of 2500 BTU/cu. ft. and an elevation of 0 - 2000 ft.

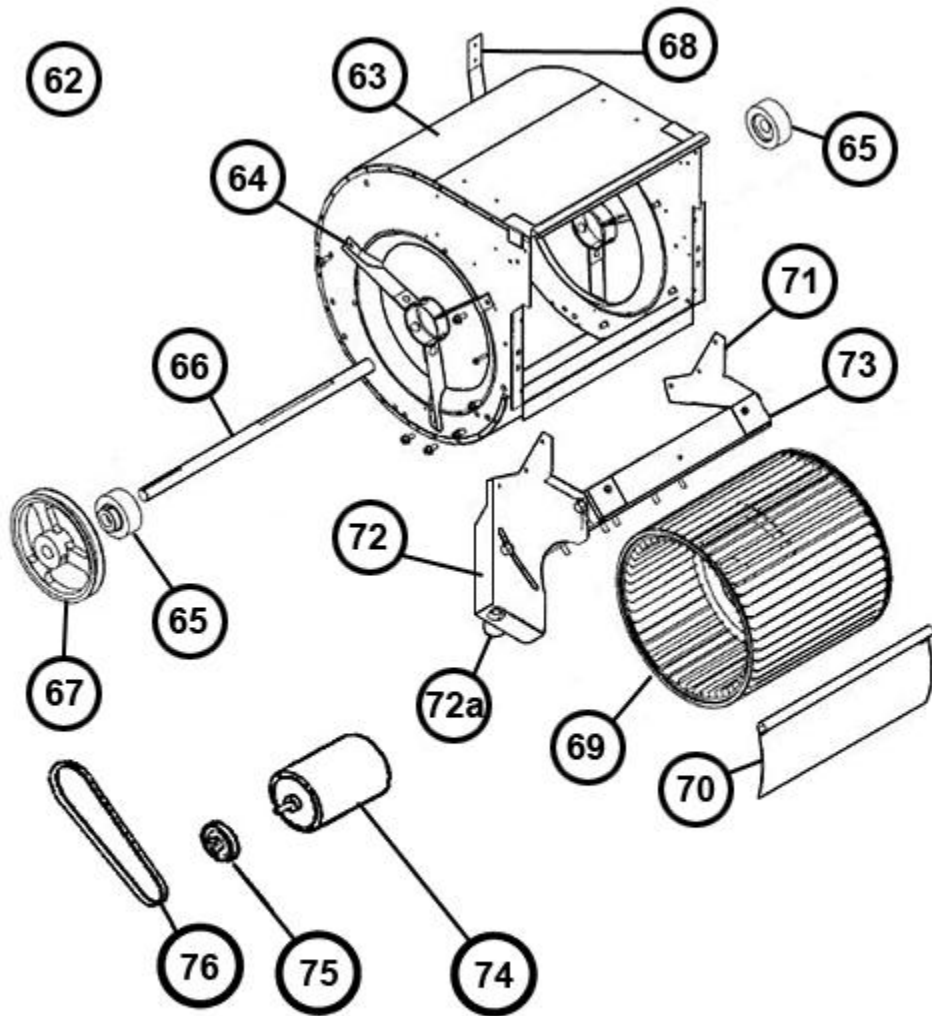
Furnace Input Rating (BTU/HR)	Canadian High Altitude Derated Input (BTU/HR)	Number of Burners	Elevation (ft.)					
			Country					
			0 - 2000 U.S.	2001 - 4000 U.S.	4001 - 6000 U.S.	8000+ U.S.	0 - 2000 Canada	2001 - 4500 Canada
40,000	36,000	2	62-22175-55	62-22175-55	62-22175-56	62-22175-56	62-22175-55	62-22175-13
60,000	54,000	3	62-22175-55	62-22175-55	62-22175-56	62-22175-56	62-22175-55	62-22175-13
72,000	N/A	4	62-22175-13	62-22175-57	62-22175-57	62-22175-59	62-22175-13	N/A
80,000	72,000	4	62-22175-55	62-22175-55	62-22175-56	62-22175-56	62-22175-55	62-22175-13
90,000	N/A	5	62-22175-13	62-22175-57	62-22175-57	62-22175-59	62-22175-13	N/A
100,000	90,000	5	62-22175-55	62-22175-55	62-22175-56	62-22175-56	62-22175-55	62-22175-13
120,000	108,000	6	62-22175-55	62-22175-55	62-22175-56	62-22175-56	62-22175-55	62-22175-13
135,000	121,500	6	62-22175-54	62-22175-55	62-22175-55	62-22175-56	62-22175-54	62-22175-55
150,000	135,000	6	62-22175-54	62-22175-55	62-22175-55	62-22175-56	62-22175-54	62-22175-54
180,000	N/A	9	62-22175-55	62-22175-55	62-22175-56	62-22175-56	62-22175-55	N/A
210,000	N/A	9	62-22175-54	62-22175-55	62-22175-55	62-22175-56	62-22175-54	N/A
210,000	N/A	10	62-22175-55	62-22175-55	62-22175-56	62-22175-56	62-22175-55	N/A
225,000	202,500	9	62-22175-54	62-22175-55	62-22175-55	62-22175-56	62-22175-54	62-22175-54
250,000	225,000	10	62-22175-54	62-22175-55	62-22175-55	62-22175-56	62-22175-54	62-22175-54
252,000	225,000	9	62-22175-53	62-22175-54	62-22175-54	62-22175-55	62-22175-53	62-22175-54
252,000	N/A	12	62-22175-55	62-22175-55	62-22175-56	62-22175-56	62-22175-55	N/A
290,000	N/A	14	62-22175-55	62-22175-55	62-22175-56	62-22175-56	62-22175-55	N/A
300,000	270,000	12	62-22175-54	62-22175-55	62-22175-55	62-22175-56	62-22175-54	62-22175-54
330,000	N/A	14	62-22175-54	62-22175-55	62-22175-55	62-22175-56	62-22175-54	N/A
350,000	315,000	14	62-22175-54	62-22175-55	62-22175-55	62-22175-56	62-22175-54	62-22175-54
400,000	360,000	14	62-22175-53	62-22175-54	62-22175-54	62-22175-55	62-22175-53	62-22175-54



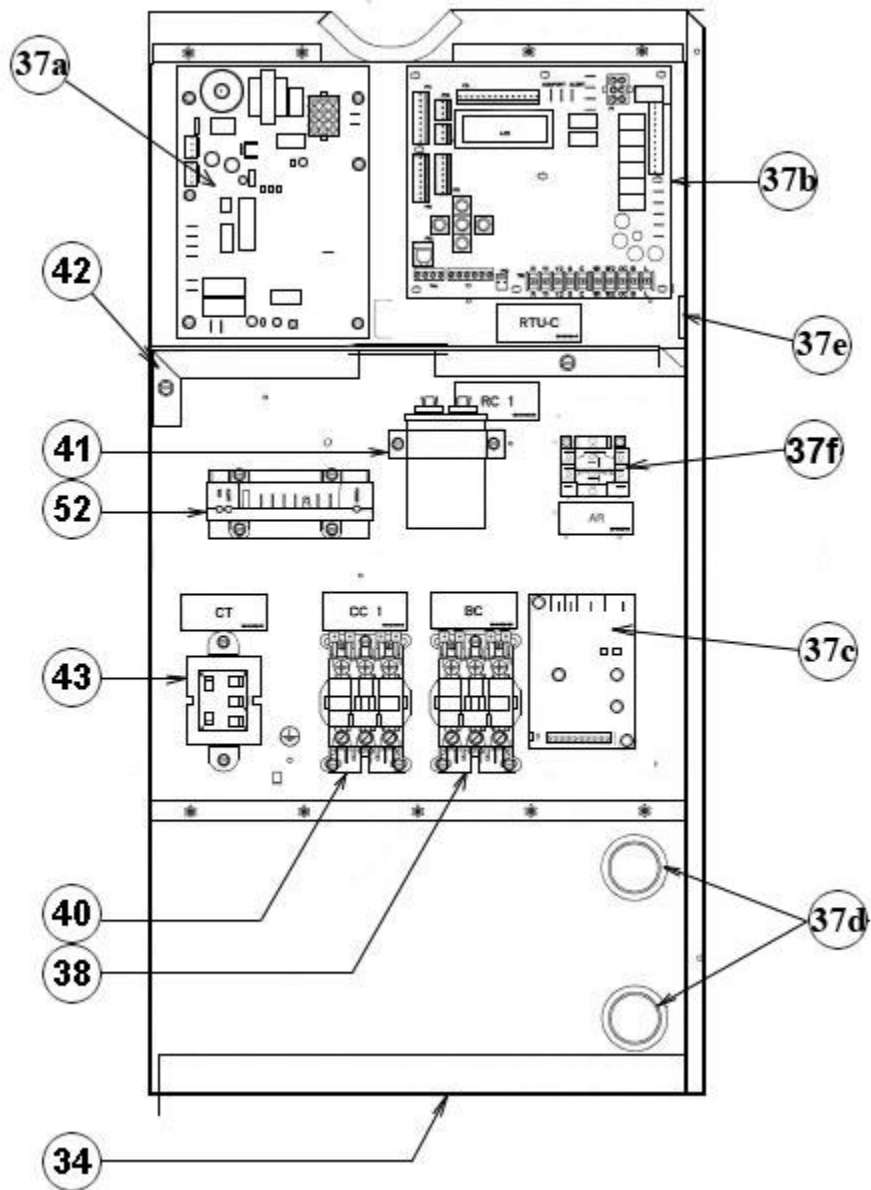
Exploded View 036-060



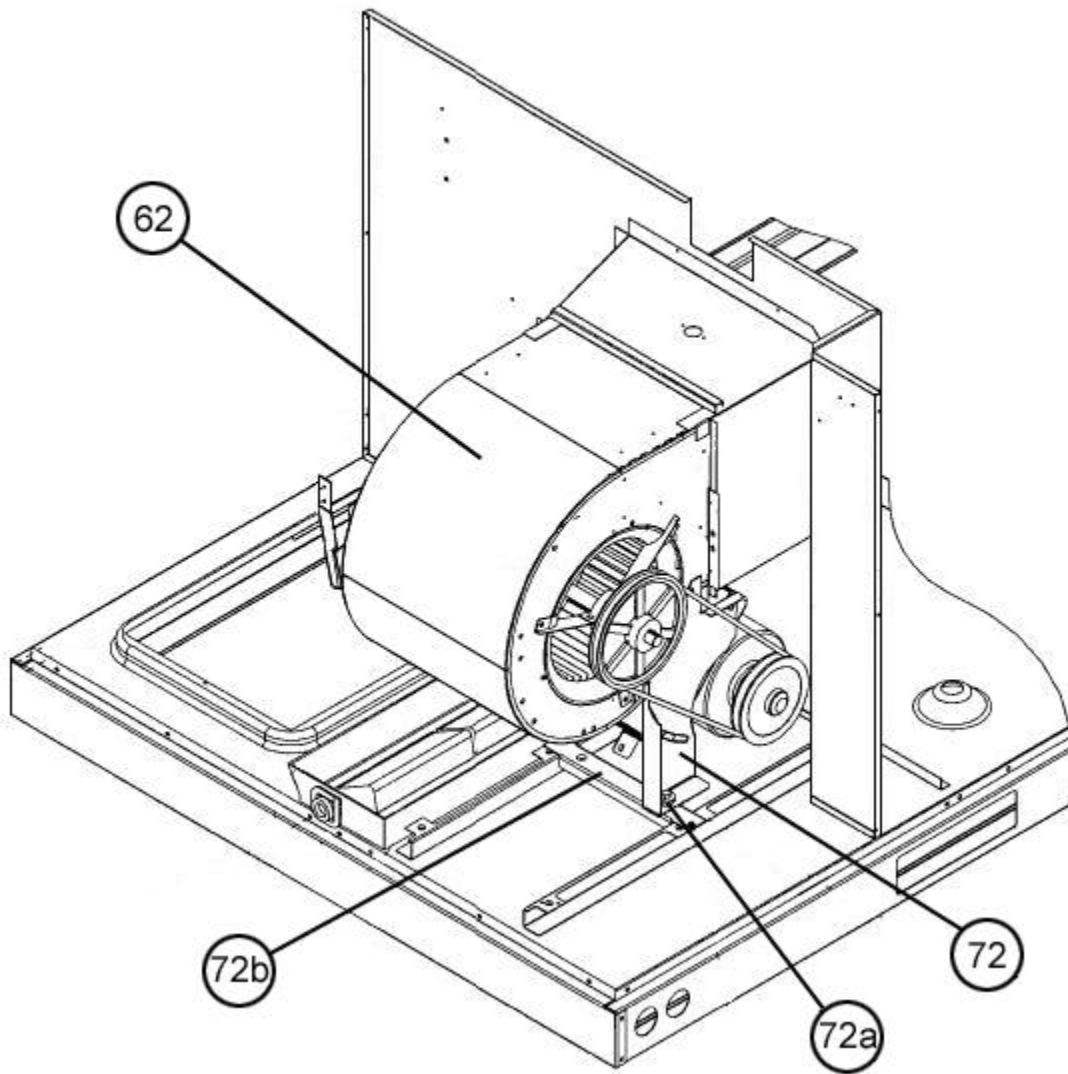
Top Panel View 036-060



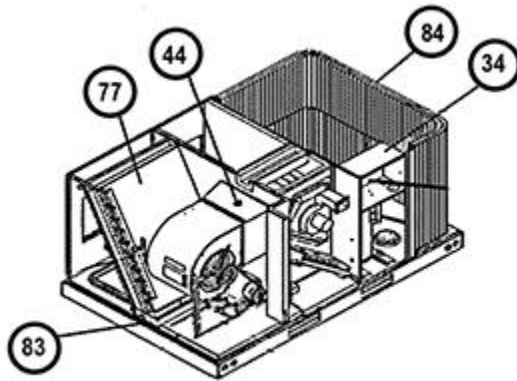
Blower Assembly - Belt Drive 036-060



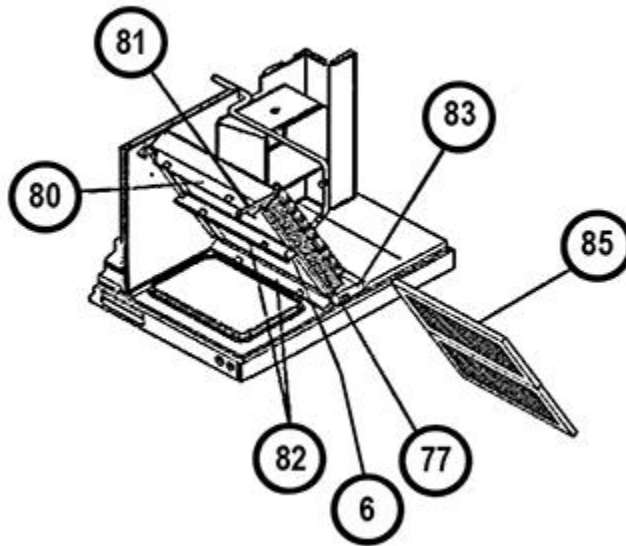
Control Box 036-060



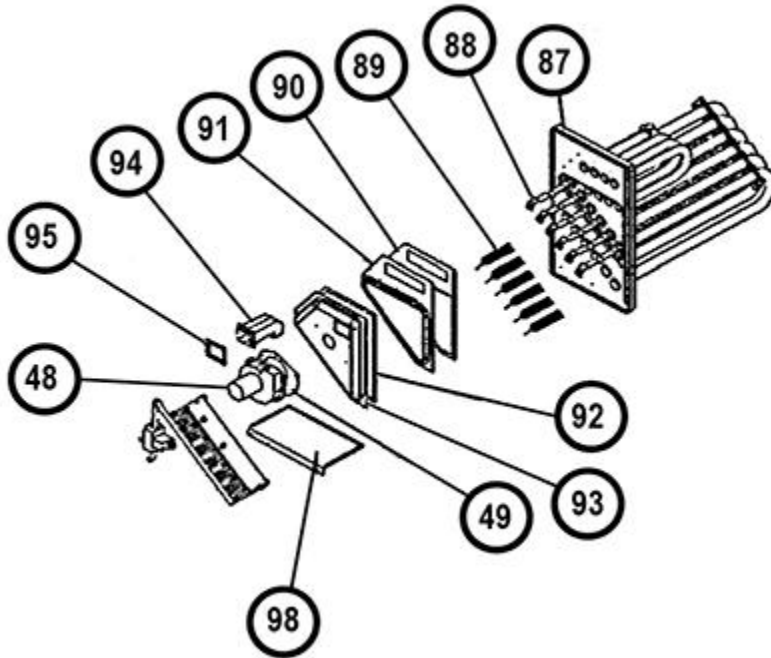
Blower Motor Mount Assembly - Belt Drive 030-060



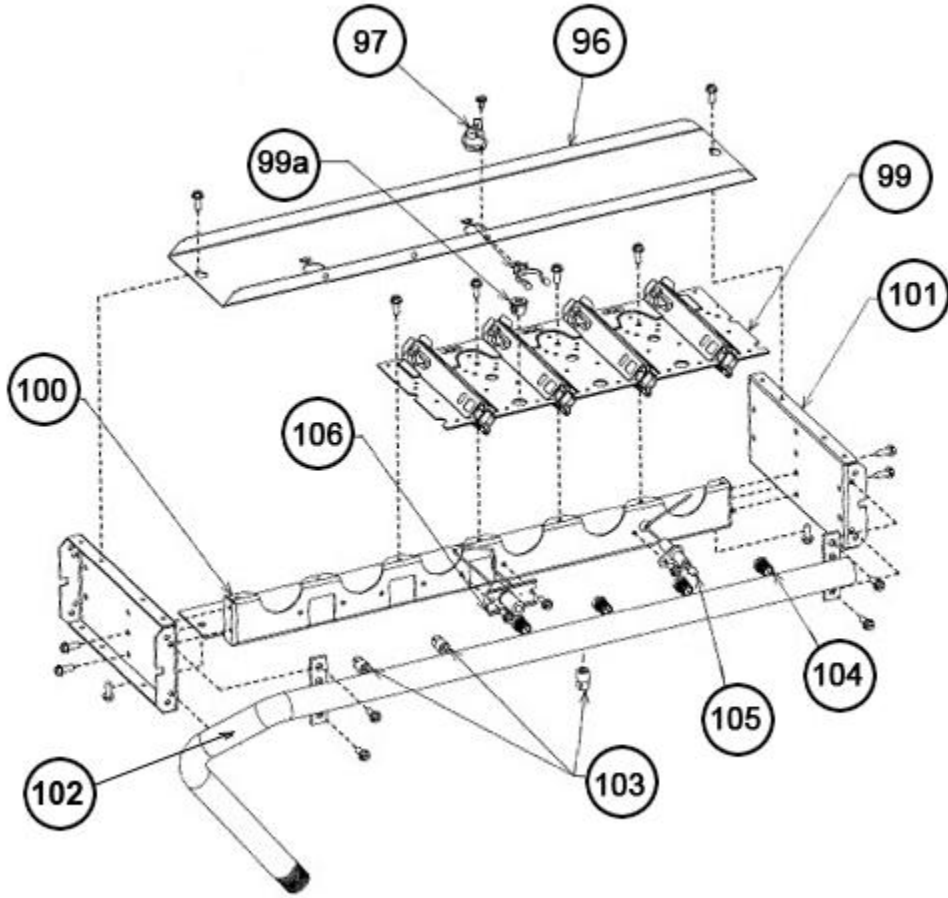
Coil Group Cut-away View 036-060



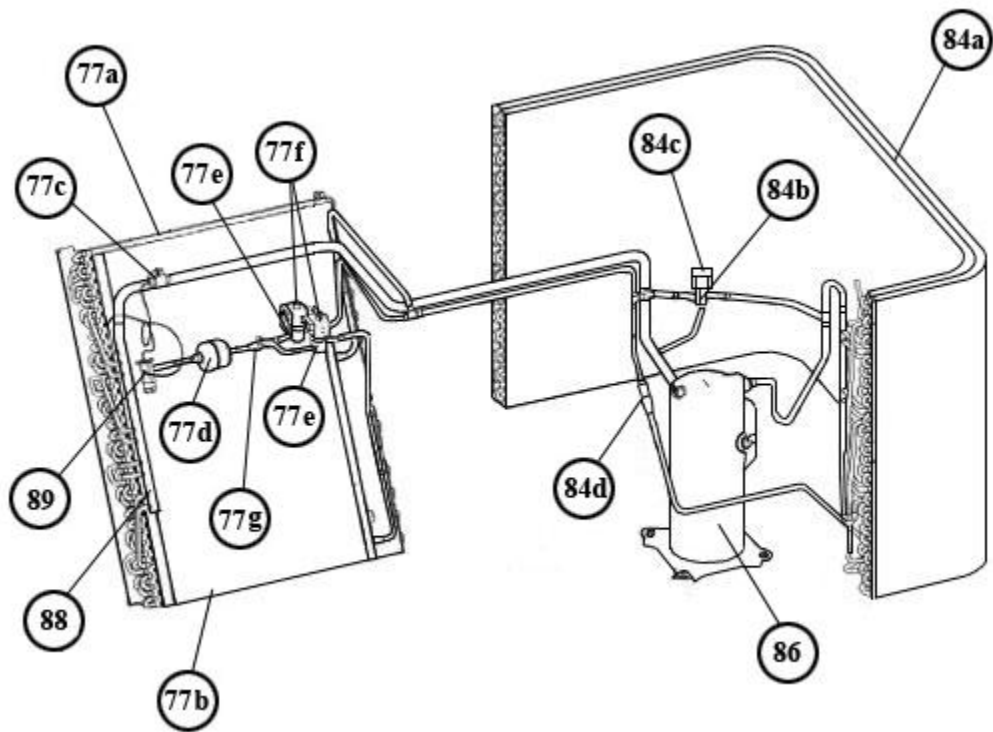
Evaporator Coil - Filter Parts 036-060



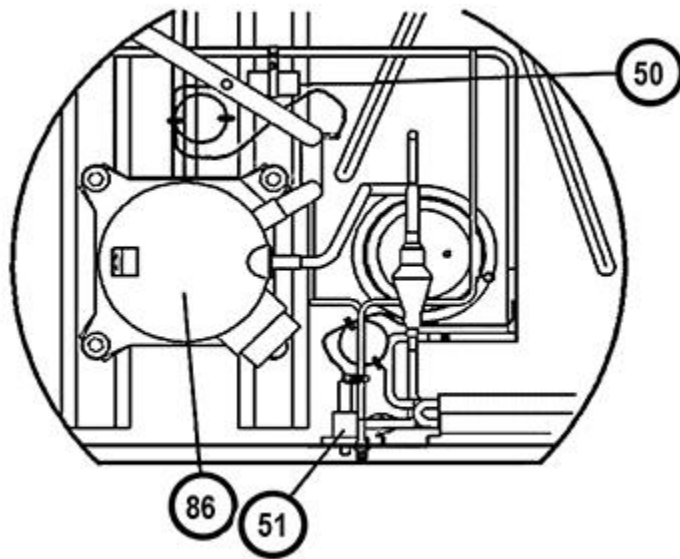
Heat Exchanger Assembly 036-060



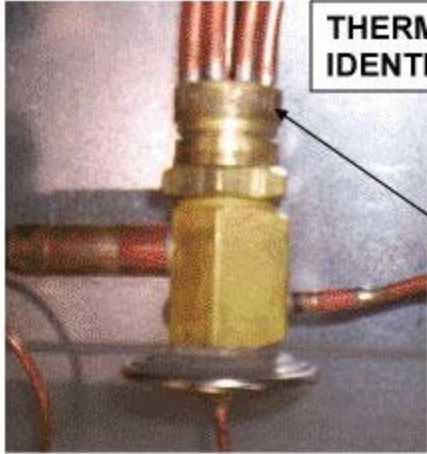
One Piece Burner Assembly 036-060



Reheat Circuit Assembly 036-060



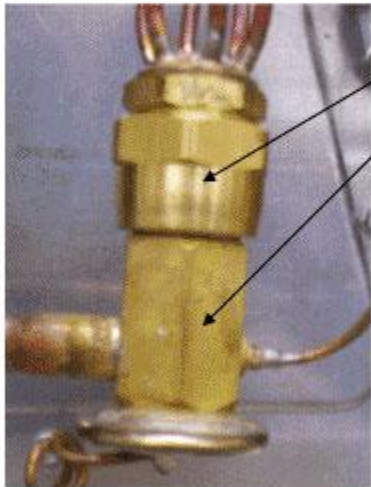
Compressor - Refrigeration Group 036-060



THERMAL EXPANSION VALVE MANUFACTURER IDENTIFICATION (For "N" Style Indoor Coils ONLY)

Sporlan Expansion Valves

Look for the name "SPORLAN" engraved on the base at the distributor body assembly.



Parker Expansion Valves

The distributor body is larger (thicker) than the expansion valve body.



Emerson Expansion Valves

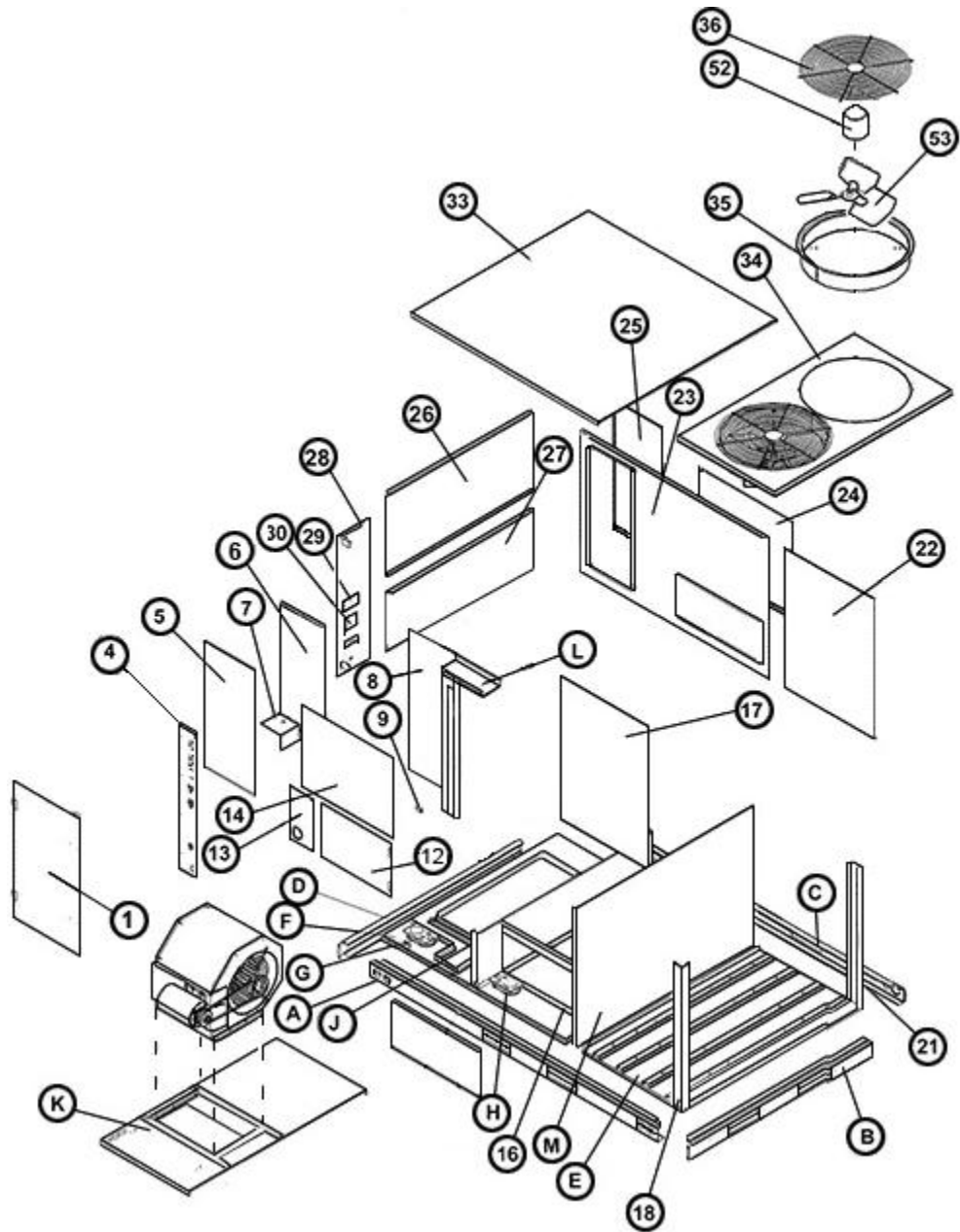
The expansion valve body is about two (2) inches long. Look between the arrows.

IMPORTANT NOTE:

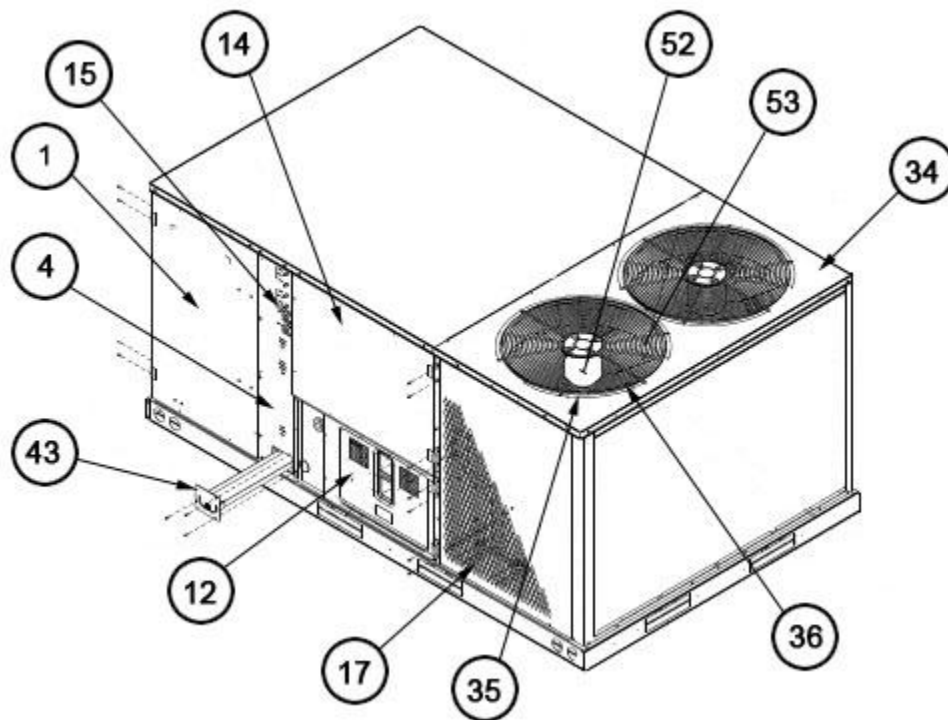
To obtain the correct replacement TXV you must either:

- 1. Provide the EXACT TXV part number obtained by examining the unit.**
- 2. Provide a) The unit model number and b) the TXV manufacturer (determined by using this guide).**

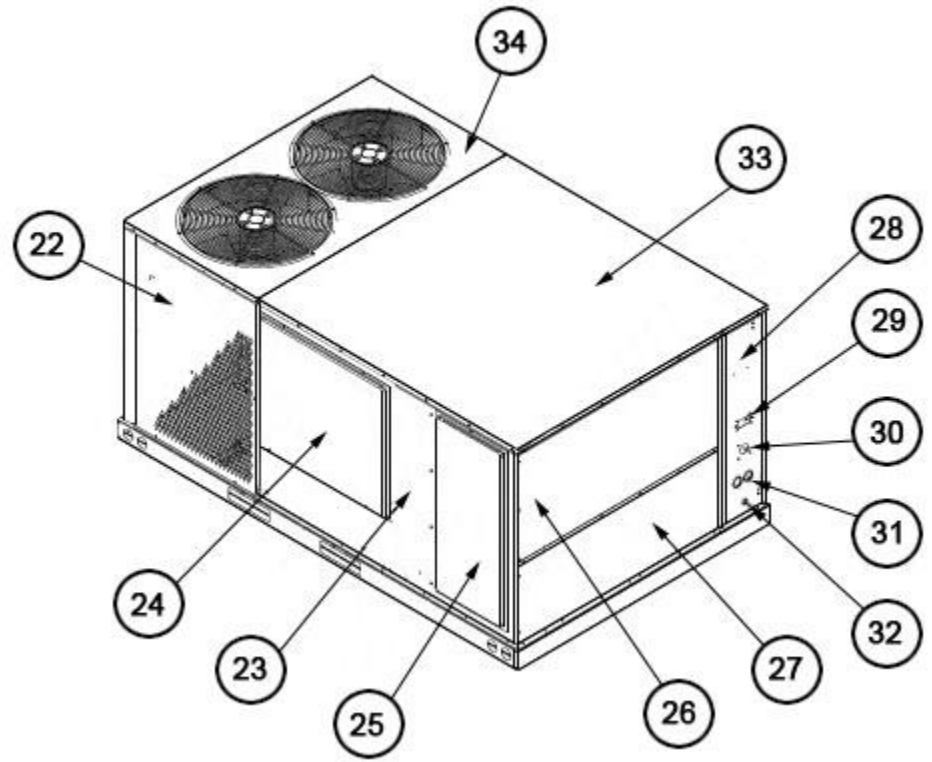
TXV Identification Guide



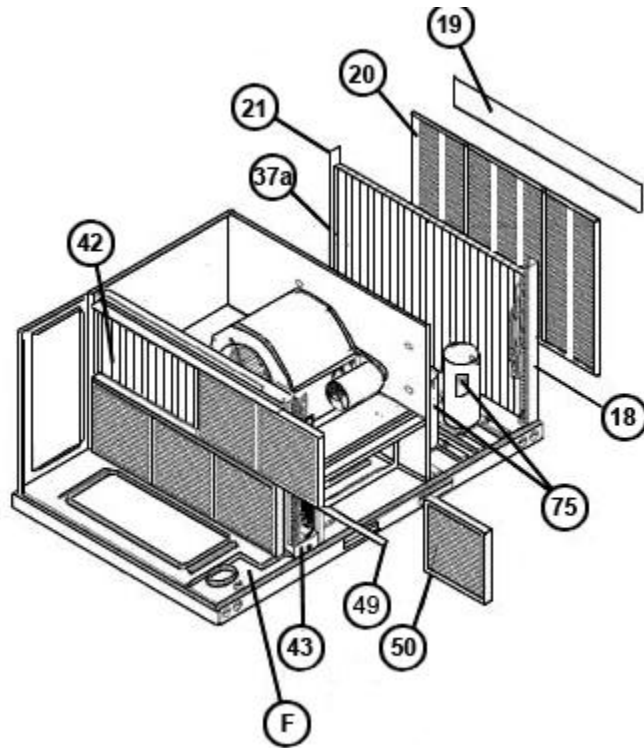
Exploded View 090-151



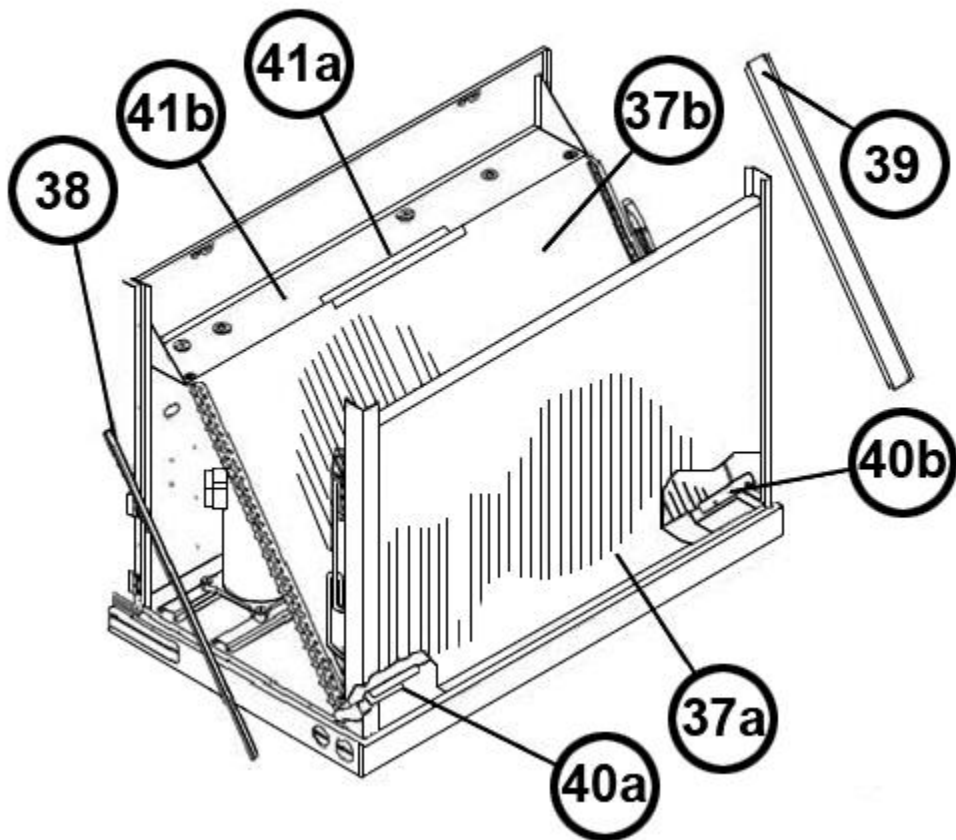
Exterior - Front 090-151



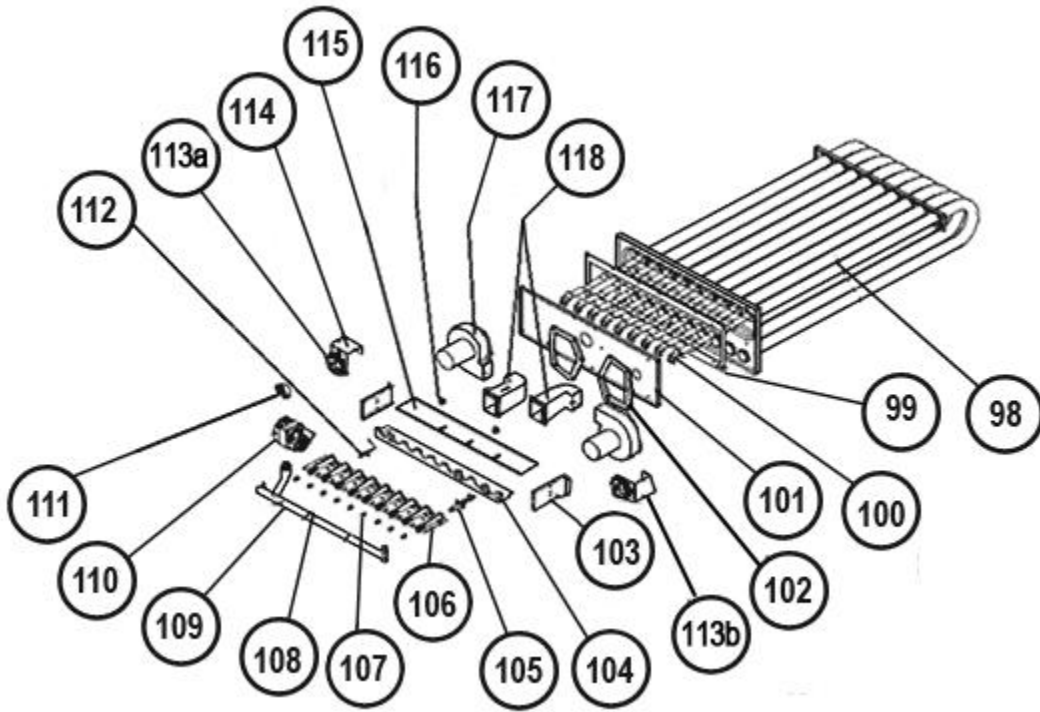
Exterior - Back 090-151



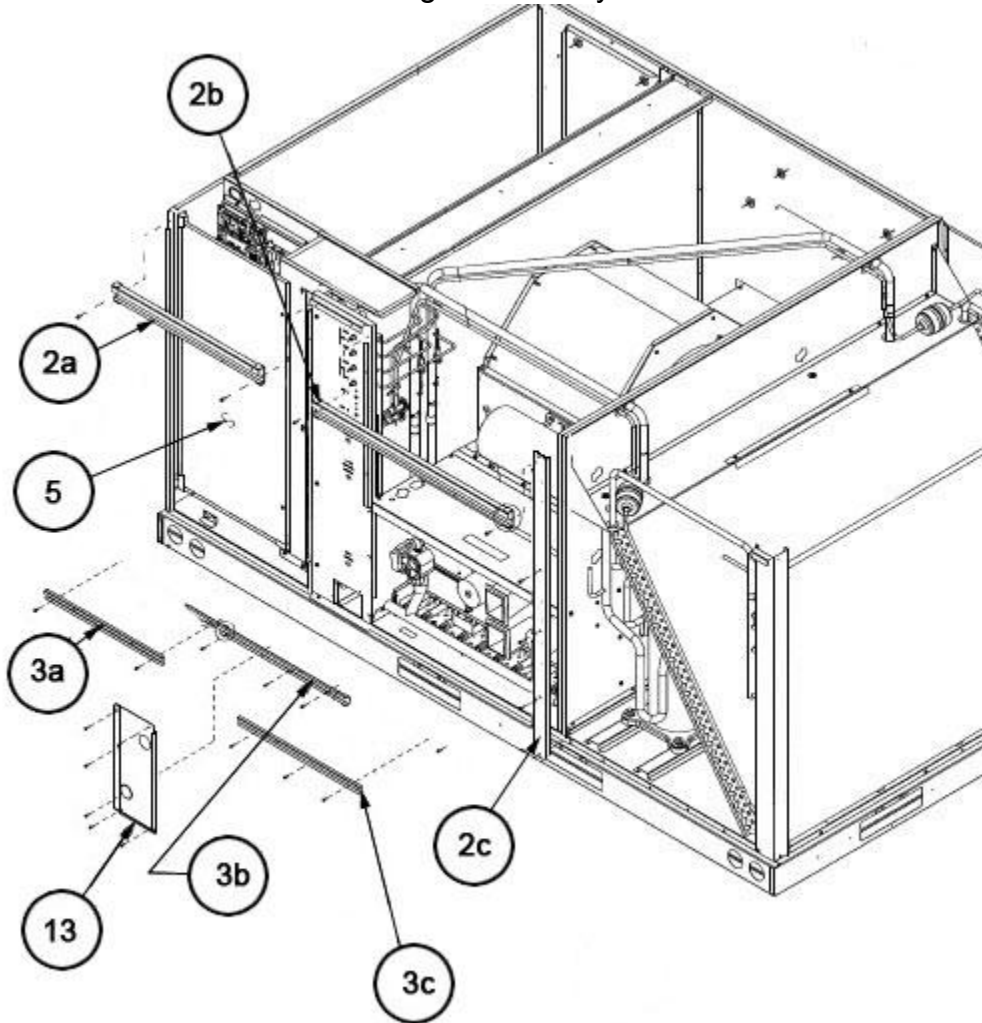
Filter-Coil Assembly 090-151



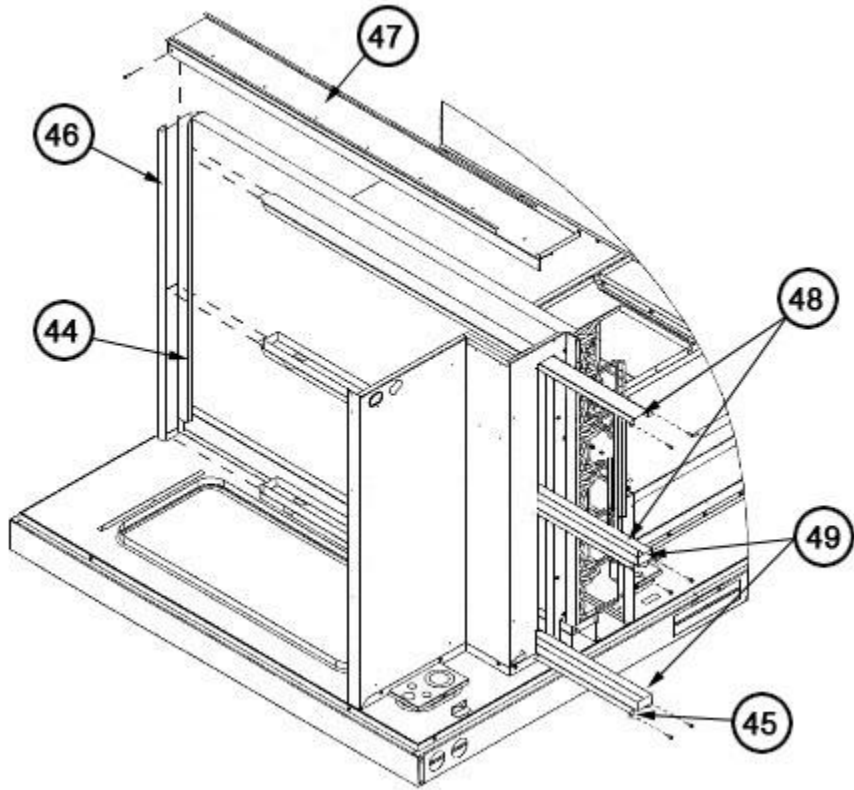
Condenser Coil Assembly 090-151



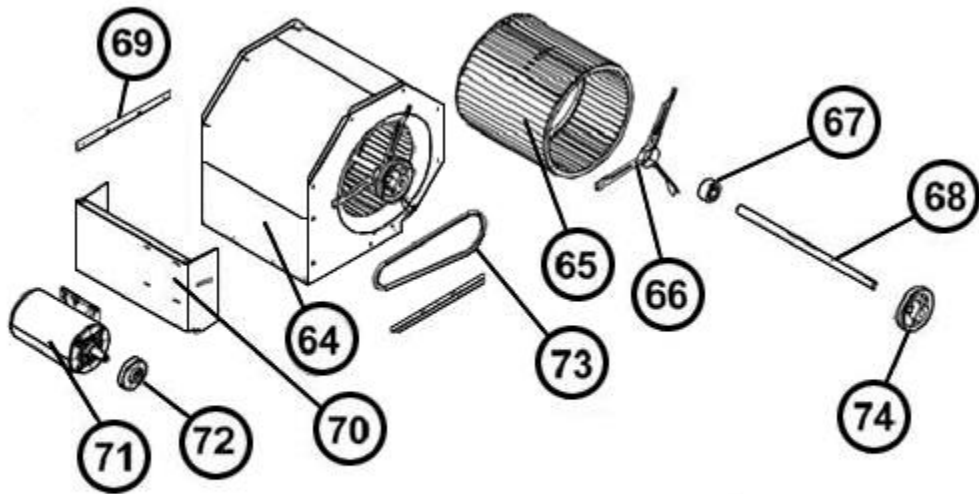
Heat Exchanger Assembly 090-151



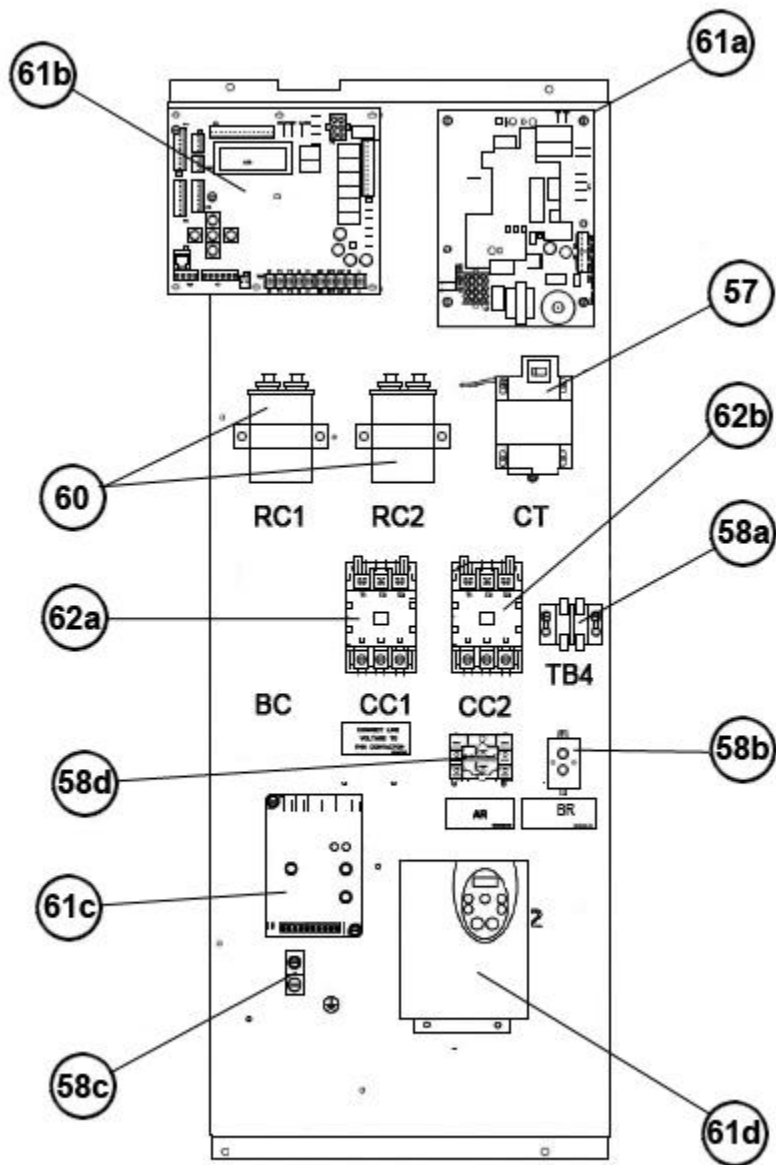
Front Panel Brackets 090-151



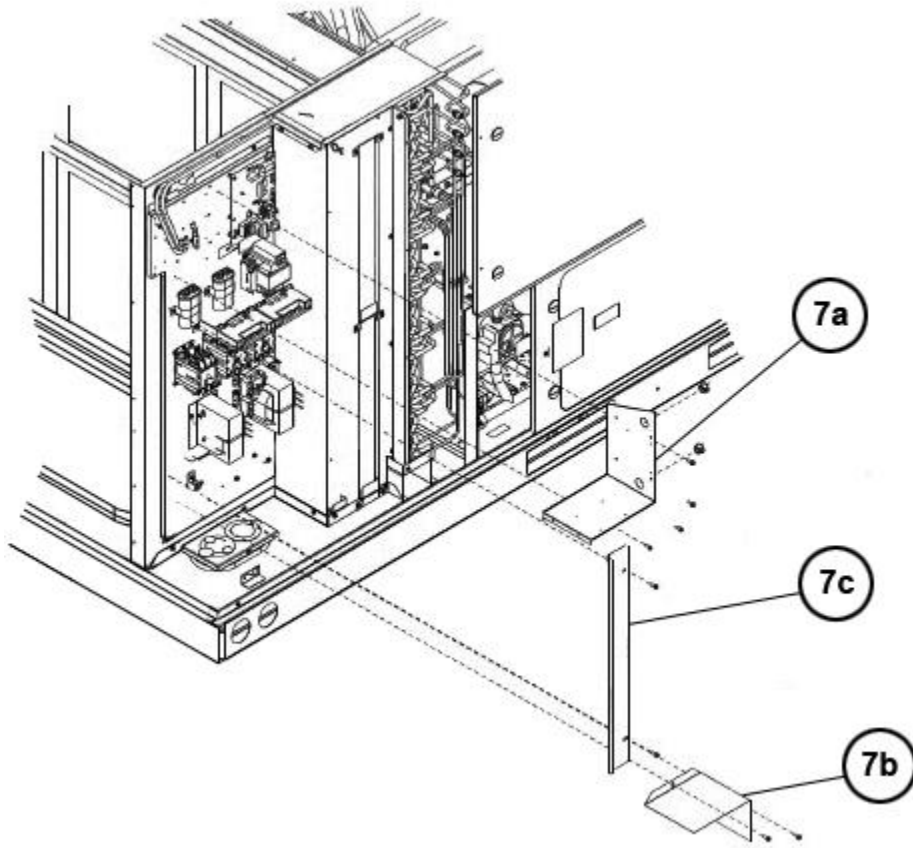
Filter Frame Assembly 090-151



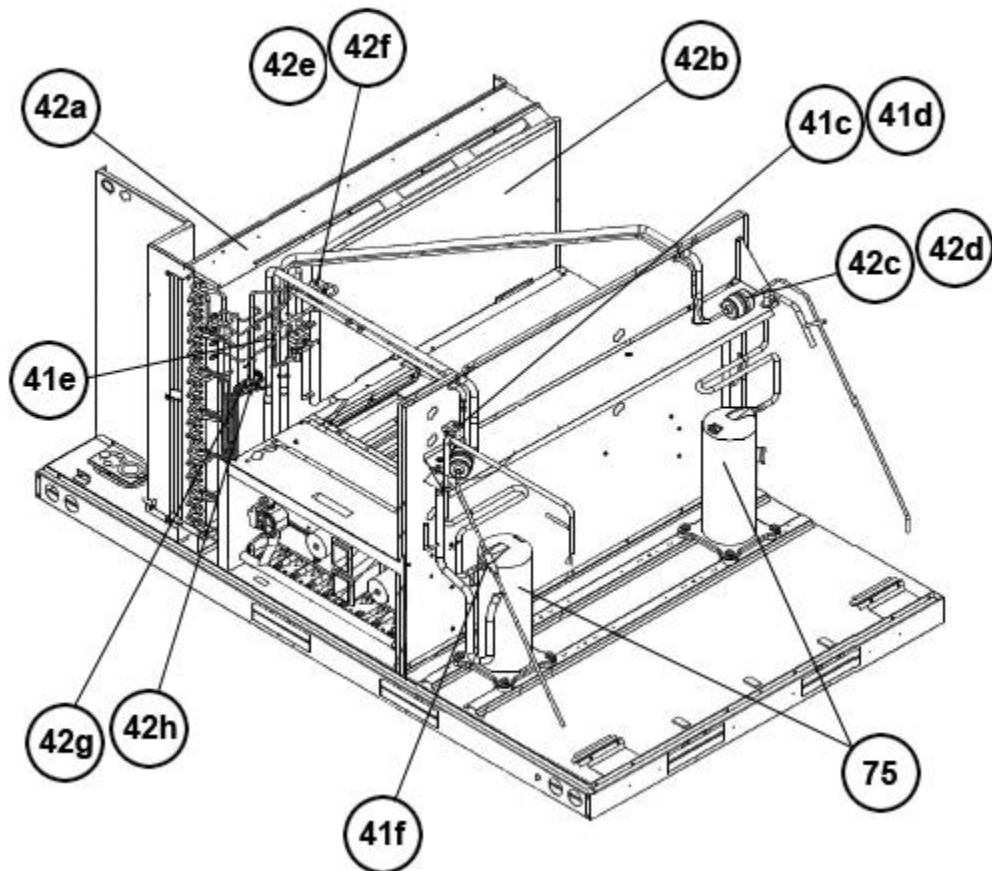
Blower Assembly 090-151



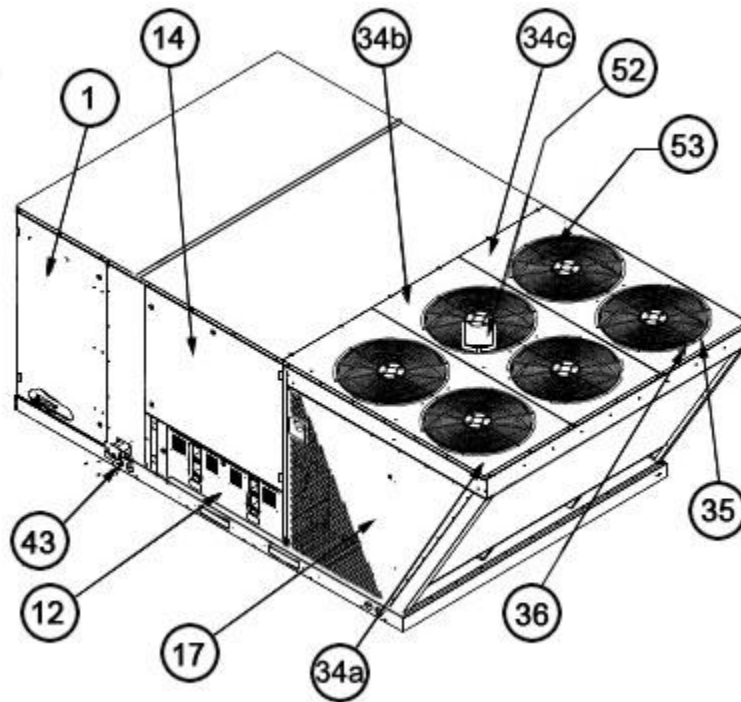
Control Box 090-151



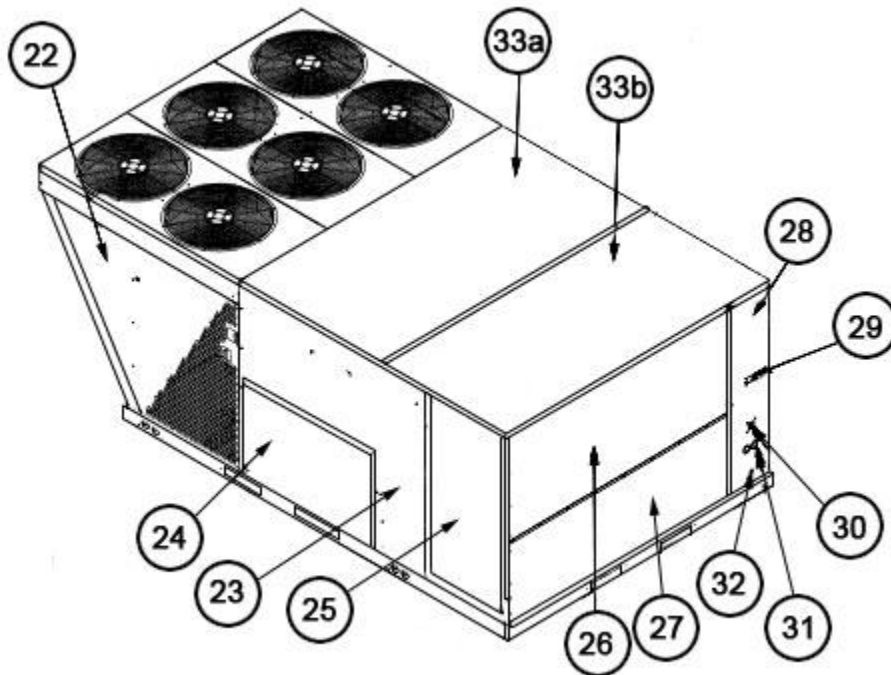
Low Voltage Shields 090-151



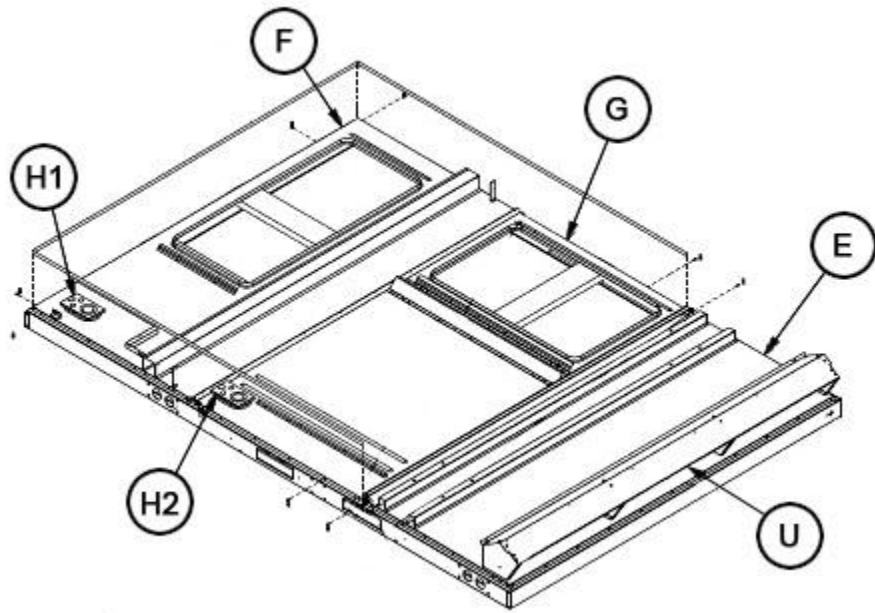
Reheat Circuit Assembly 090-151



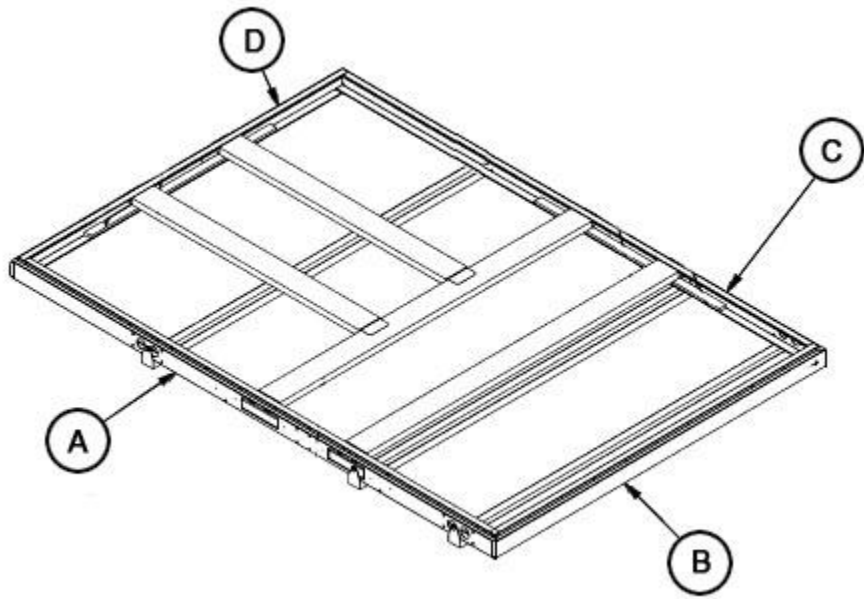
Exterior - Front 180-300



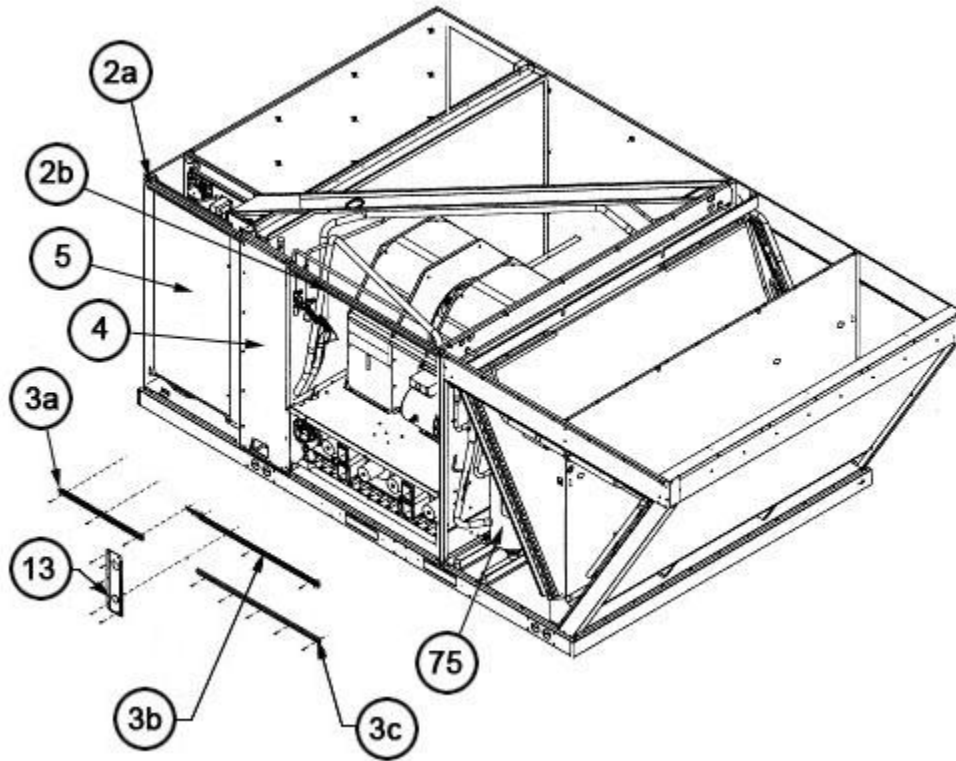
Exterior - Rear 180-300



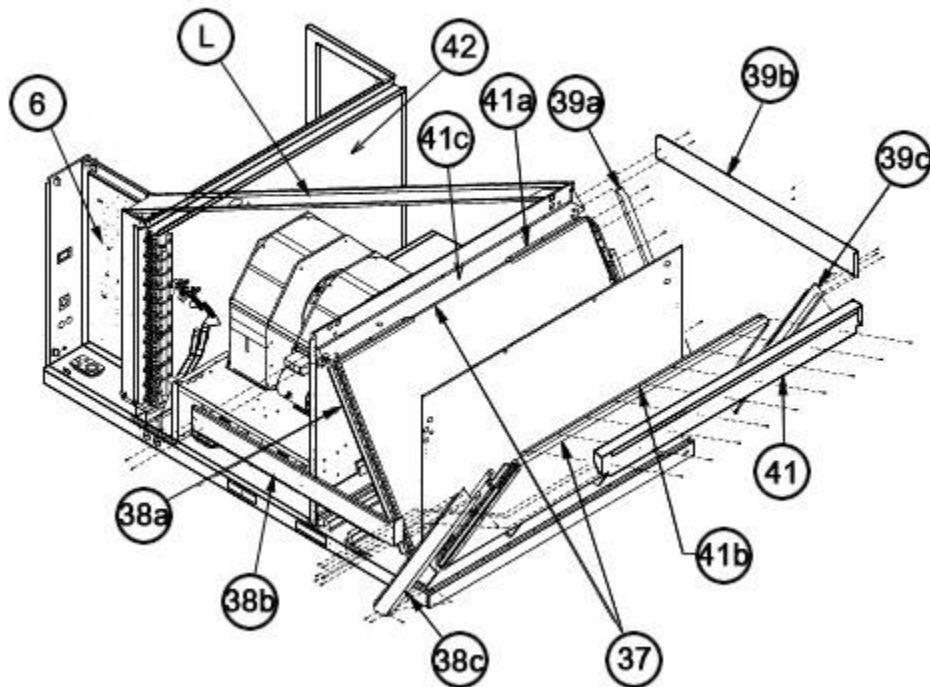
Base Pan Assembly 180-300



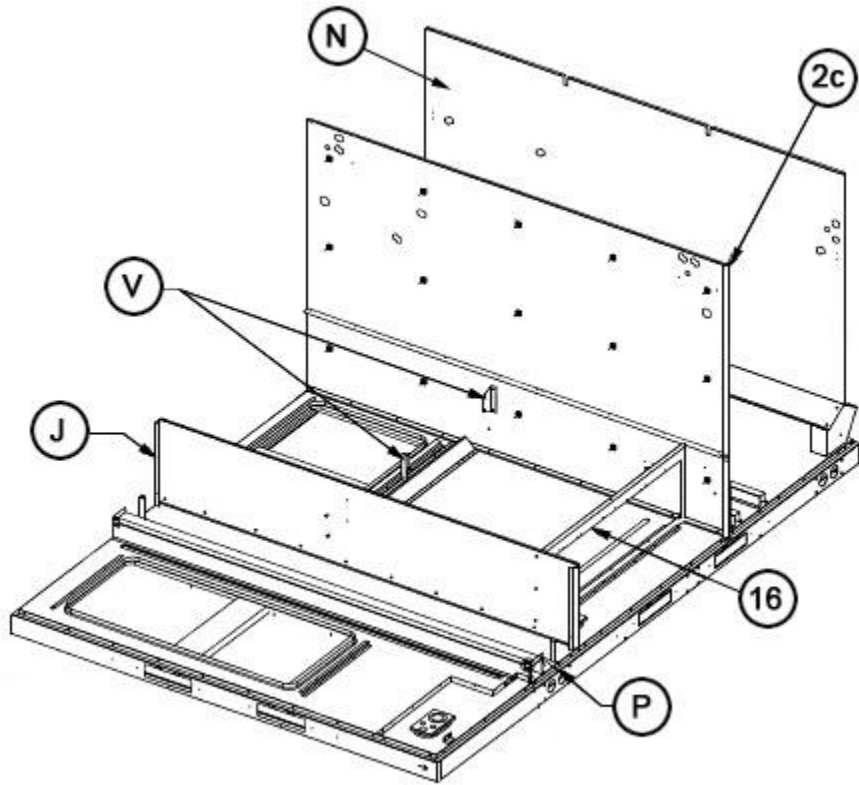
Base Rail Assembly 180-300



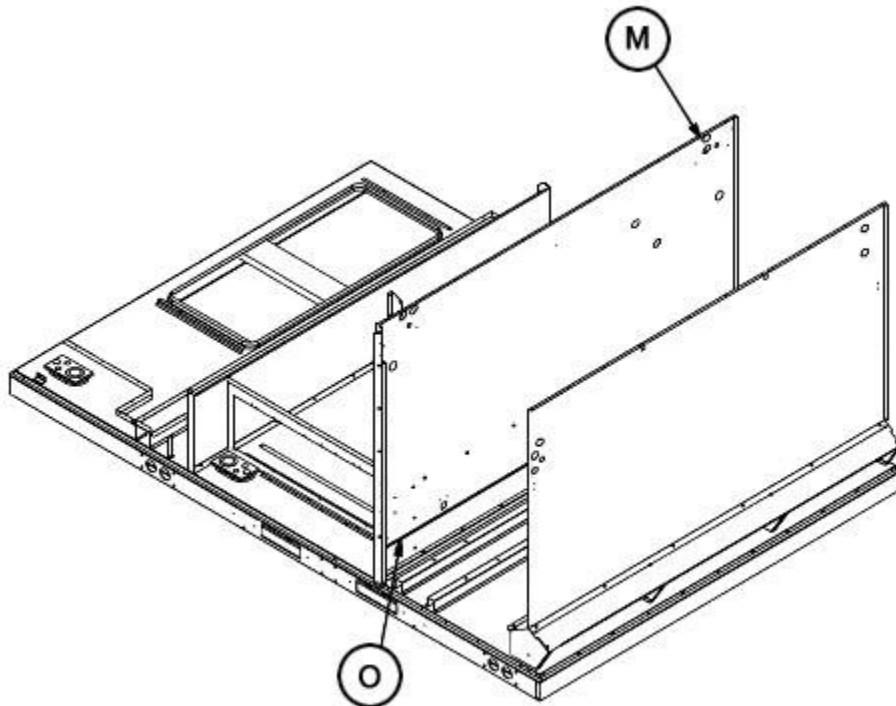
Front Panel Brackets 180-300



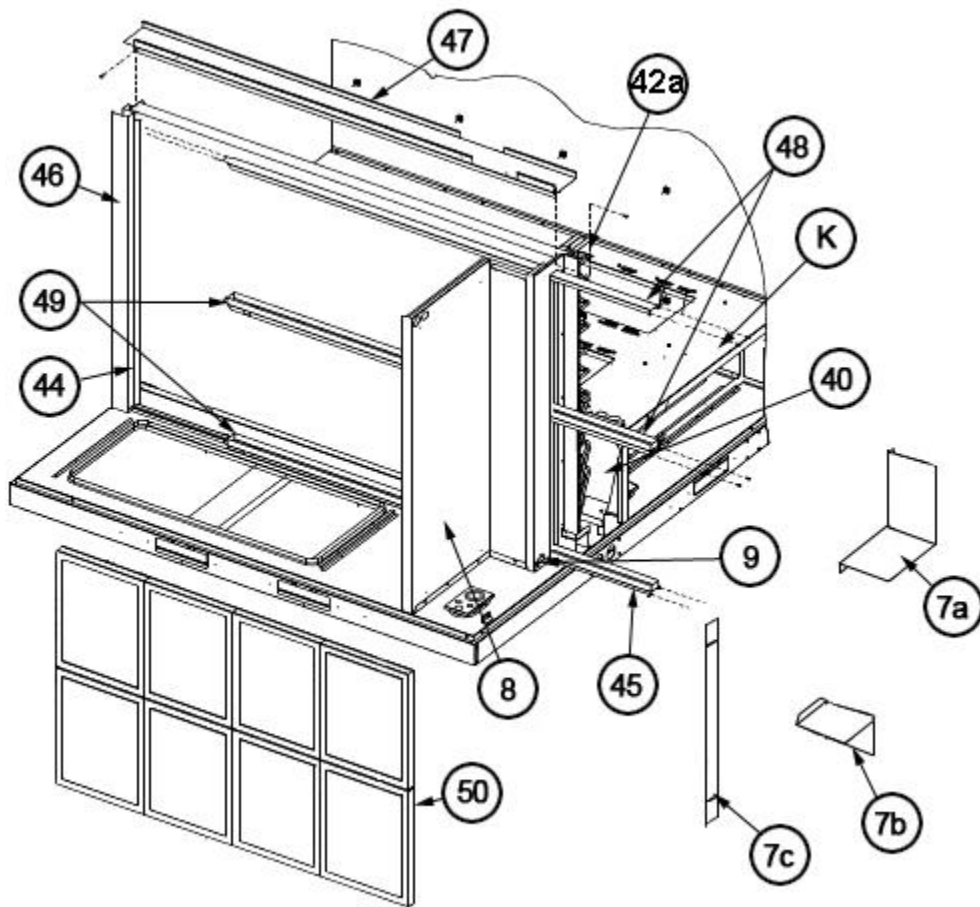
Interior - Coil 180-300



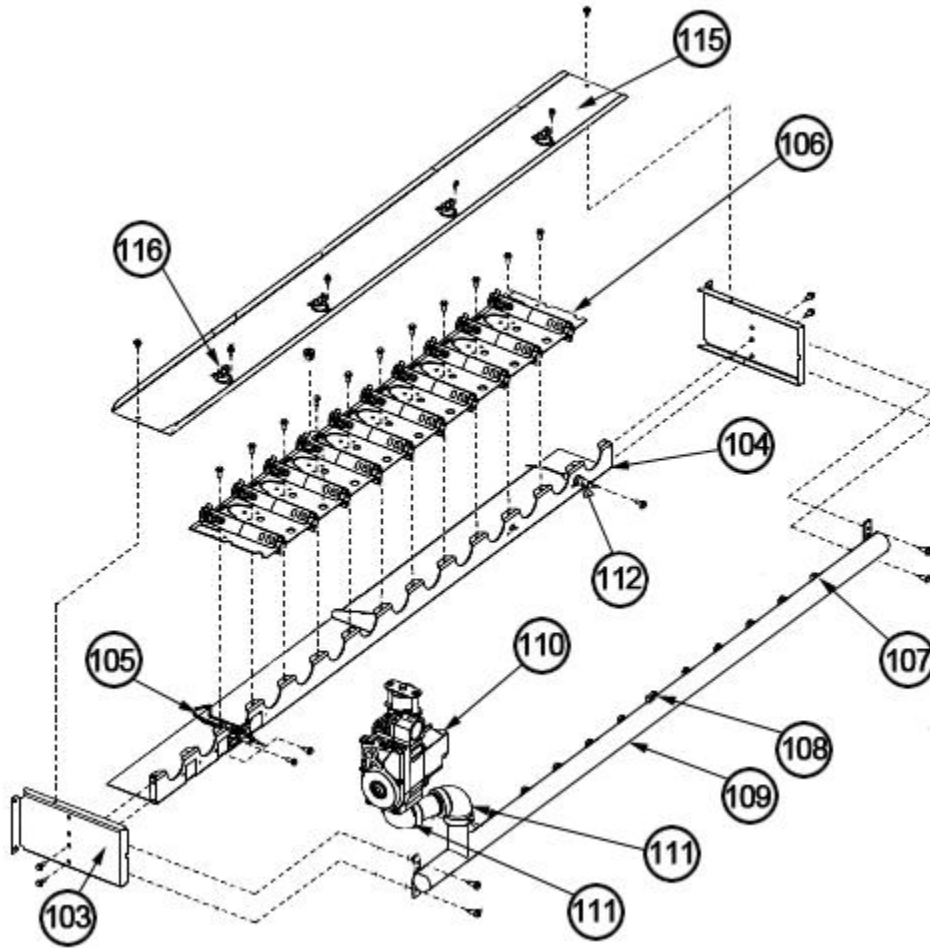
Heat Compartment 180-300



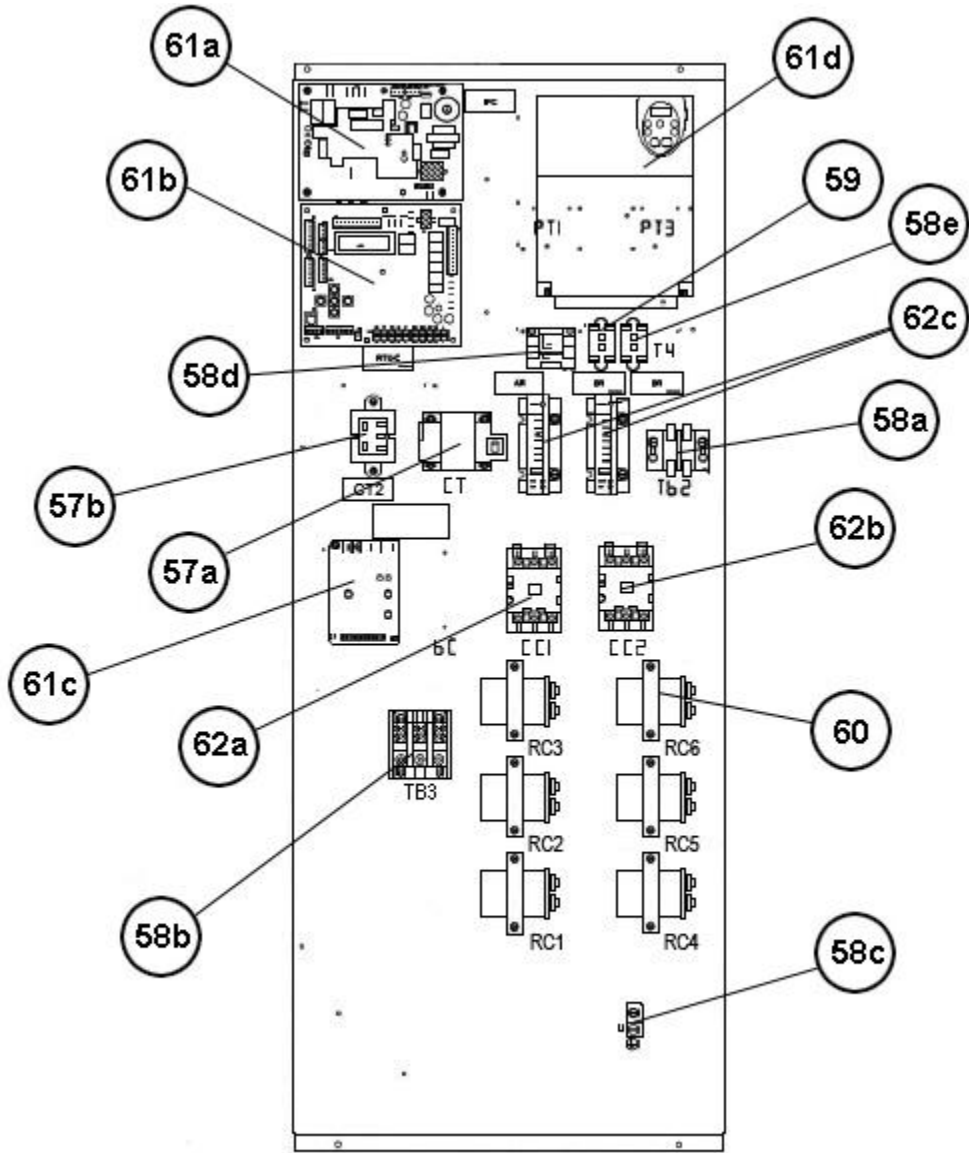
Condenser Bulkhead 180-300



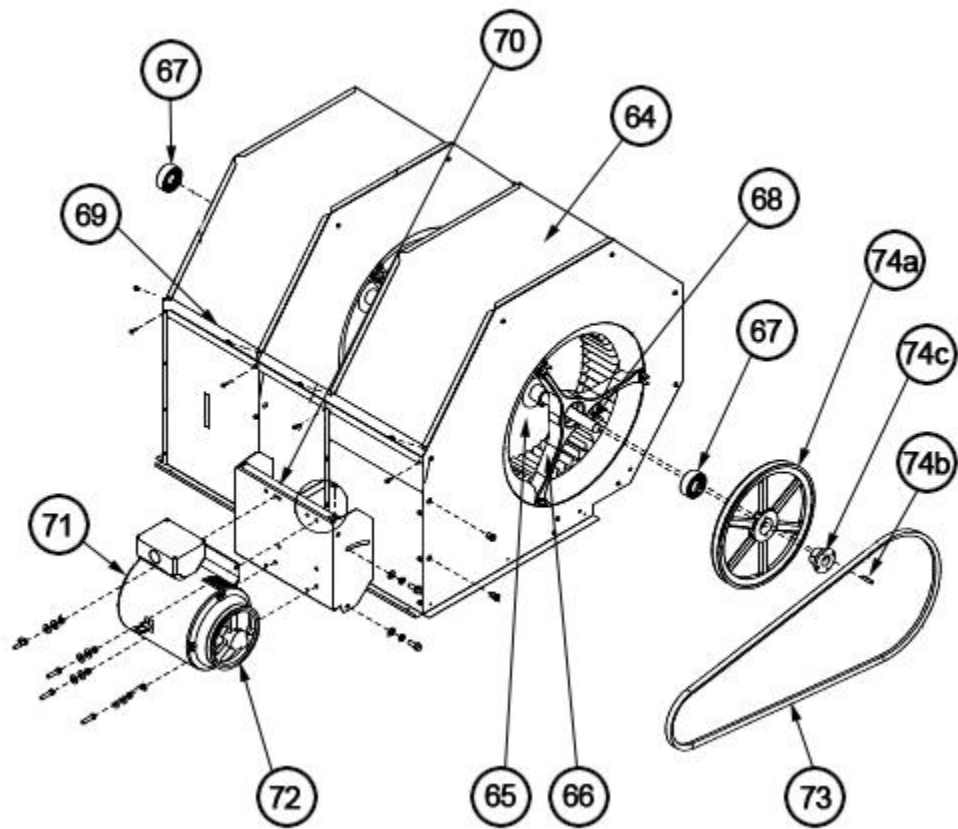
Filter Frame - Low Voltage Shields 180-300



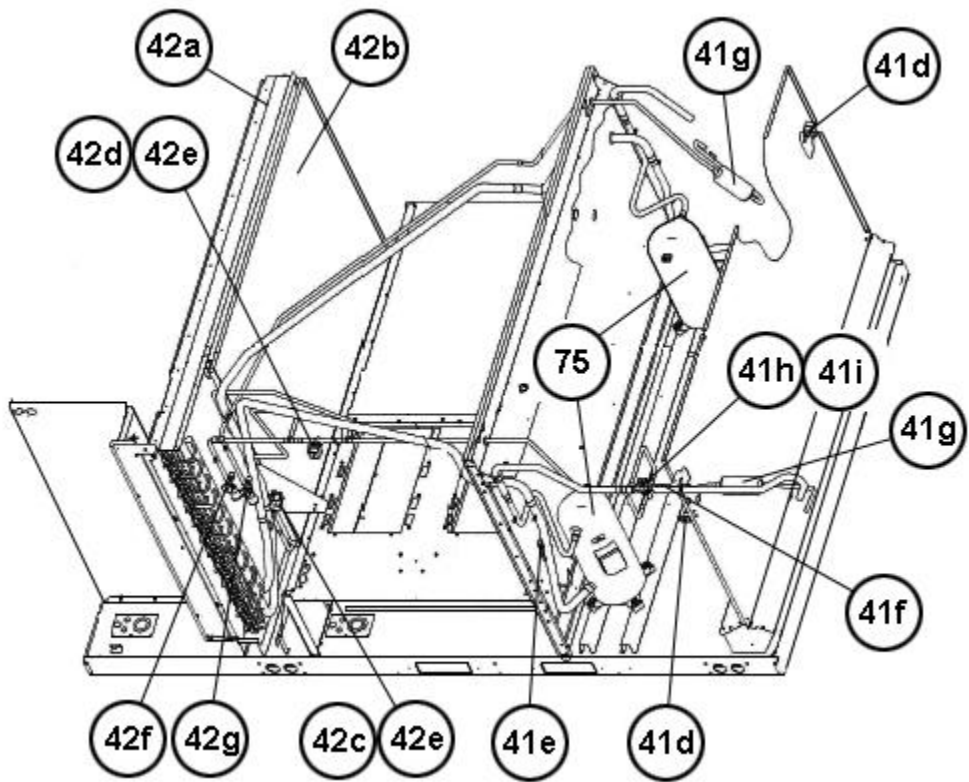
Burner Assembly 180-300



Control Box 180-300



Blower Assembly 180-300



Reheat Circuit Assembly 180-300

NOTES

Stk It is recommended that stock be maintained for this part.

N/A Not Applicable

- 1 Order Gas Valve for Natural Gas along with LP Conversion Kit.
- 2 Order the specified LP Conversion Kit.
- 3 IFC rotated 90 degrees on 090-120 units produced after approximate date code F3512.
- 4 On approximate Date Code 0213, the wire screens were removed from the Gas Heat Door inlet hood openings. If replacing the door on a unit manufactured after this date, new Inlet Flue Hoods (AE-90745-04) should be ordered. The new inlet hoods incorporate louvers to prevent entry of debris into the combustion chamber.

DISCLAIMER: This document is intended to provide general replacement parts information to aid qualified service personnel in the repair of these models. The complete Model and Serial Number of the unit under repair should be specified when selecting and ordering replacement parts. Specifications and illustrations are subject to change without notice. Document 92-42800-RKNL-G supersedes all previous parts lists for these models. See <http://www.rheempartslists.net/92-42800-RKNL-G> for the latest revision of this document. The manufacturer assumes no obligation for errors or omissions. Service personnel must verify the proper and safe operation of equipment after the replacement of any original components.