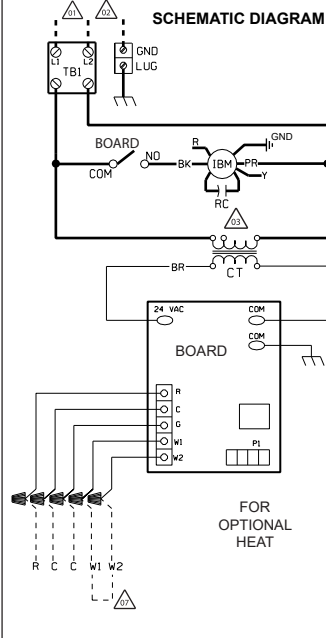
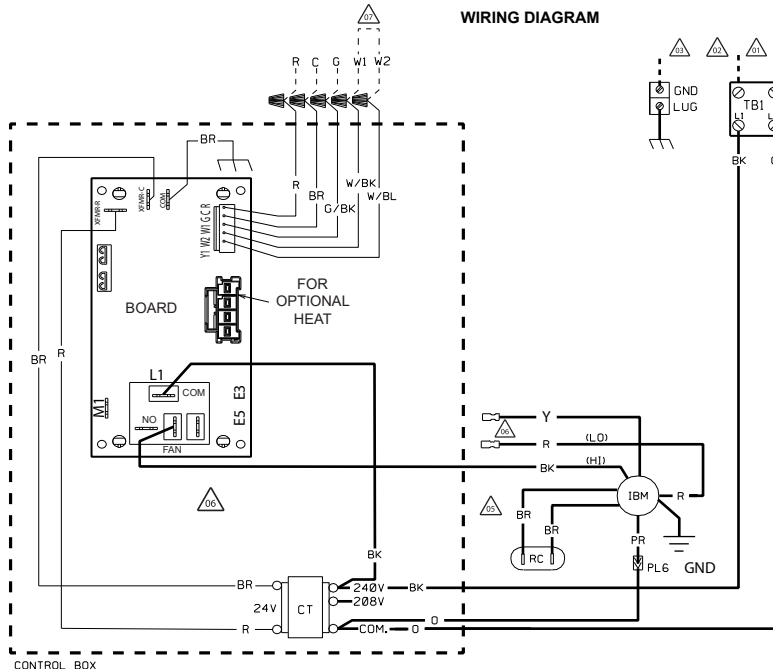


WIRING DIAGRAM



WIRE COLOR CODE

BK.....BLACK	G.....GREEN	PR.....PURPLE
BR.....BROWN	GY.....GRAY	R.....RED
BL.....BLUE	O.....ORANGE	W.....WHITE
	Y.....YELLOW	

ELECTRICAL WIRING DIAGRAM

ELECTRIC AIR HANDLER PSC MOTOR 208/240 VOLT

NOTES

- CONNECT SUPPLY WIRING TO 208/240V, 60HZ. SINGLE PHASE.
- SUPPLY WIRE MUST BE RATED AT 75° C MIN. SEE INSTRUCTIONS FOR SIZE.
- FOR USE WITH COOPER CONDUCTORS ONLY.
- CONTROL WIRING TO THERMOSTAT.
- THE WIRING DIAGRAM ABOVE SHOWS THE HIGH CONNECTIONS.
- FOR LOW SPEED BLOWER:
-REMOVE (BK) WIRE FROM NO TERMINAL OF BOARD.
-MOVE INSULATED CAP FROM (R) WIRE TO (BK) WIRE.
-ATTACH (R) WIRE TO BOARD NO TERMINAL.
- WHEN USING 13KW AND HIGHER JUMP W1 AND W2 TOGETHER FOR MAXIMUM TEMPERATURE RISE.
- FOR 208V APPLICATIONS MOVE BK WIRES FROM 240V TAP TO 208V TAP ON CT. SWAP Y & PR WIRES AT PL6.

COMPONENT CODES

BOARD	BLOWER CONTROL
CB	CIRCUIT BREAKER
CT	CONTROL TRANSFORMER
GND	GROUND
IBM	INDOOR BLOWER MOTOR
OPT	OPTIONAL
PL	POLARIZED PLUG
RC	RUN CAPACITOR
TB	TERMINAL BLOCK

WIRING INFORMATION

- LINE VOLTAGE
 -FACTORY STANDARD _____
 -FACTORY OPTION - - - - -
 -FIELD INSTALLED - - - - -
- LOW VOLTAGE
 -FACTORY STANDARD _____
 -FACTORY OPTION - - - - -
 -FIELD INSTALLED - - - - -
- REPLACEMENT WIRE
 -MUST BE THE SAME SIZE AND TYPE OF INSULATION AS ORIGINAL (105C. MIN.)
 WARNING
 -CABINET MUST BE PERMANENTLY GROUNDED AND CONFORM TO I.E.C., N.E.C., C.E.C., NATIONAL WIRING REGULATIONS, AND LOCAL CODE AS APPLICABLE.