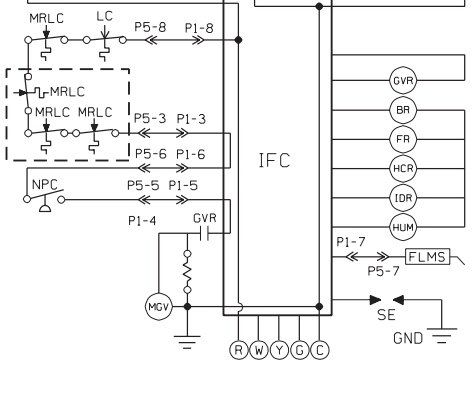
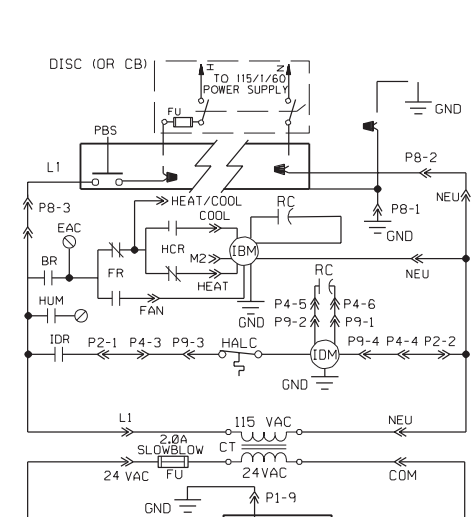
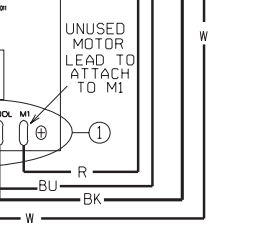
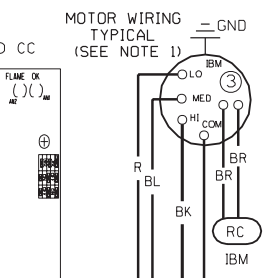


NO. OF FLASHES	PROBLEM
1	IGNITION FAILURE - 1 HR LOCKOUT
2	PRESSURE SWITCH STUCK OPEN - SWITCH WILL NOT CLOSE
3	LIMIT SWITCH OPEN - MAIN LIMIT, ROLLOUT CONTROL
4	PRESSURE SWITCH STUCK CLOSED - SWITCH WILL NOT OPEN
5	TWINNING FAULT



③ 150,000 BTU MODELS INCLUDE A FOUR SPEED MOTOR. THESE MODELS HAVE THE FOLLOWING FACTORY WIRING: BLACK (HI) TO COOL ON IFC BLUE (MED-H) TO M1 (PARKING ON IFC RED (LOW) IS NOT CONNECTED AND IS ENCLOSED WITH AN INSULATED COVER (BROWN (BOTH WIRES) TO CAPACITOR.

COMPONENT CODE	
AWC	AUX. LIMIT CONTROL (TEMP)
BR	BLOWER RELAY
CT	COMPRESSOR CONTACTOR
CT	CONTROL TRANSFORMER
DISC	DISCONNECT SWITCH
EAC	ELECTRIC AIR CLEANER
FR	FAN RELAY
FLMS	FLAME SENSOR
FU	FUSE
GND	GROUND
GVR	GAS VALVE RELAY
HCR	HEAT/COOL RELAY
HUM	HUMIDIFIER RELAY
IBM	INDOOR BLOWER MOTOR
IDM	INDUCED DRAFT MOTOR
IDR	INDUCED DRAFT RELAY
IFC	INTRGRD FURNACE CNTRL
IR	IGNITION RELAY
LC	LIMIT CONTROL
MGV	MAIN GAS VALVE
MRLC	MAIN RESET LIMIT CNTRL
MV	MAIN VALVE
NPC	NEG. PRESSURE CNTRL
PBS	PUSH BUTTON SWITCH
PL	PLUG
RC	RUN CAPACITOR
SE	SPARK IGNIT. ELECTRODE
TH	THERMOSTAT (H/C)
▲	WIRE NUT

NOTES:

① REFER TO SPEC. SHEET FOR ACTUAL FACTORY MOTOR TAP PLACEMENT OF 'HEAT' & 'LOW', AS SOME MODELS MAY BE DIFFERENT THAN SHOWN HERE. ALSO, REFER TO SPEC. SHEET OR INSTALLATION MANUAL IF WIRING OF HEAT AND/OR COOL SPEEDS IS NOT DESIRABLE.

② MODELS WITH 3 SPEED MOTOR - BLUE LEAD IS FOR MEDIUM SPEED NO YELLOW LEAD ON MOTOR

WIRING INFORMATION

LINE VOLTAGE
 -FACTORY STANDARD
 -FACTORY OPTION
 -FIELD INSTALLED

LOW VOLTAGE
 -FACTORY STANDARD
 -FACTORY OPTION
 -FIELD INSTALLED

REPLACEMENT WIRE
 -MUST BE THE SAME SIZE AND TYPE OF INSULATION AS ORIGINAL (105 C. MIN.)

WARNING
 -CABINET MUST BE PERMANENTLY GROUNDED AND CONFORM TO I.E.C., N.E.C., C.E.C., NATIONAL WIRING REGULATIONS, AND LOCAL CODES AS APPLICABLE.

WIRE COLOR CODE			
BK	BLACK	O	ORANGE
BR	BROWN	PR	PURPLE
BL	BLUE	R	RED
G	GREEN	W	WHITE
GY	GRAY	Y	YELLOW

ELECTRICAL WIRING DIAGRAM

DOWNFLOW & HORIZONTAL BLOWER INDUCED DRAFT GAS FIRED, FORCED AIR FURNACE
 SINGLE STAGE HEAT
 SINGLE STAGE COOL
 DIRECT SPARK IGNITION

DR. BY	APP. BY	DATE	DWG. NO.	REV
JIM		2-16-07	90-24007-08	00

DWG. NO. 90-24007-08 REV 00