

# GAS FURNACES



## **SUPER QUIET 80™ TWO STAGE 80% A.F.U.E.† DOWNFLOW GAS FURNACES**

The Rheem *Prestige Series™ Super Quiet 80™* Two Stage Downflow line of downflow gas furnaces is designed for installation in closets, alcoves, utility rooms, or attics. The design is certified by CSA International.

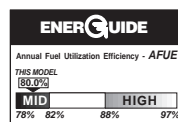
### **Features**

- Patented heat exchanger, constructed of both stainless and aluminized steel for the maximum in corrosion resistance.
- Low profile "34 inch" [864 mm] design is lighter and easier to handle, and leaves room for optional equipment.
- Energy efficient and quiet ECM 2+ motor.
- Improves cooling efficiency when matched with rated condensing unit and coil.
- Constant CFM.
- Dip switch settings for selectable cooling airflow.
- On-demand dehumidification terminal for improved comfort in cooling mode.
- Left or right side gas and electric inlet connections.
- All models feature an integrated board with humidifier and electronic air cleaner hookups.
- Insulated blower compartment, a slow-open gas valve, specially designed draft inducer motor and blower motor make it one of the quietest furnaces on the market today.
- Pre-paint galvanized steel cabinet.
- Easy door removal and replacement.
- Molded permanent filter.
- Compatible with single or two-stage thermostat. (For optimal performance, two-stage thermostat recommended.)

A variety of cooling coils and plenums designed to use with Rheem *Prestige Series™ Super Quiet 80™* Two Stage Downflow gas furnaces are available as optional accessories.

†A.F.U.E. (Annual Fuel Utilization Efficiency) calculated in accordance with Department of Energy test procedures.

**RGLR- SERIES  
ECM Equipped  
Models with Input Rates from  
75,000 to 125,000 BTU/HR  
115 Volts, 60 Hz, Single-Phase  
[22 to 37 kW]  
(U.S. & Canadian Models)**





# RHEEM PRESTIGE SERIES™ SUPER QUIET 80™ TWO STAGE DOWNFLOW GAS FURNACE



ECM Motor



IFC Integrated  
Furnace Control



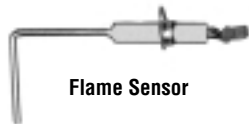
ECM Interface  
Furnace Controls



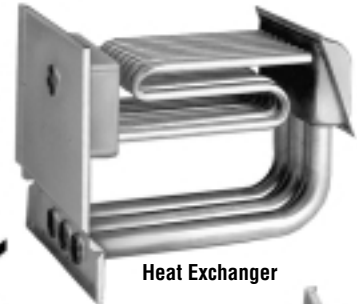
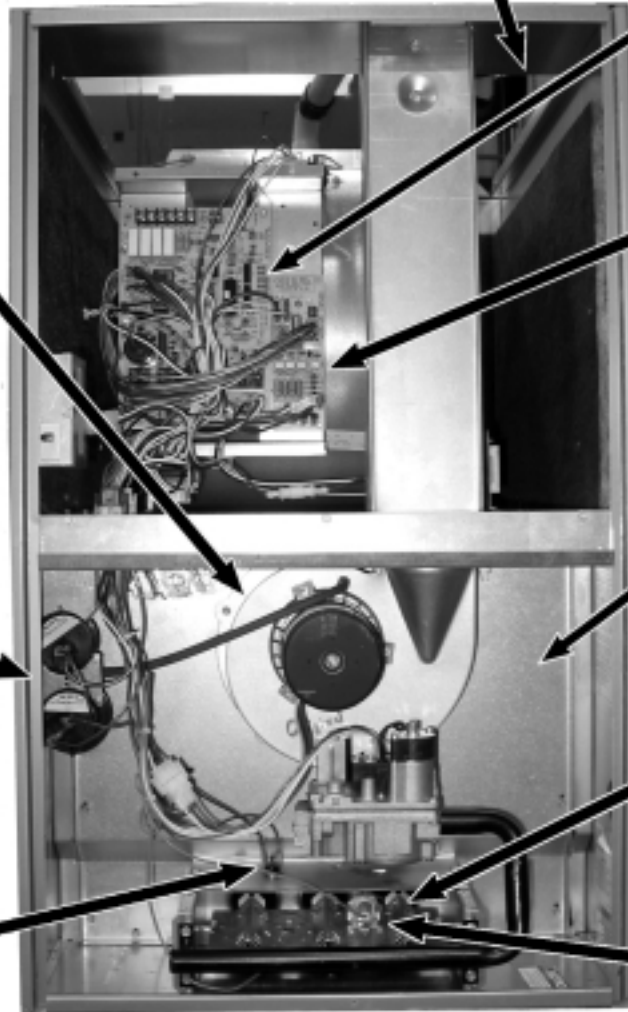
Two-Speed  
Draft Inducer Motor



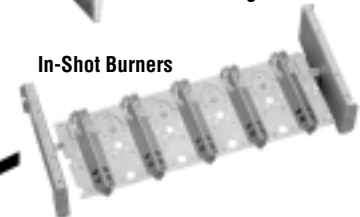
Pressure Switch



Flame Sensor



Heat Exchanger



In-Shot Burners



Direct Spark Ignitor

## STANDARD EQUIPMENT

Completely assembled and wired; 2 speed induced draft blower; high and low pressure switches; 2 stage redundant main gas control; blower compartment door safety switch; solid state time on/time off blower control; limit control; transformer; ECM blower motor. Furnaces are equipped with cooling/heating relay and transformer (40VA) ready for air conditioning applications. (Please note: a thermostat is not included as standard equipment.) Flame sensor diagnostics; fused-protection (secondary), **3rd speed option for continuous fan.**

NOTE: Furnace is not listed for use with fuels other than natural or L.P. (propane) gas.

The complete terms of limited and other warranties are available at our sales office, or through local installer.

All models can be converted by a qualified HVAC professional or local service dealer to use L.P. (propane) gas without changing burners. Factory approved kits must be used to convert from natural to L.P. (propane) gas and may be ordered as optional accessories from a Rheem parts distributor.

For L.P. (propane) operation, refer to Conversion Kit Index Form.

NOTE: For natural and L.P. (propane) gas models, direct spark ignition is 100% lockout type.

**WARNING**  
THIS FURNACE IS NOT APPROVED  
OR RECOMMENDED  
FOR USE IN MOBILE HOMES

BEFORE PURCHASING THIS APPLIANCE, READ IMPORTANT ENERGY COST AND EFFICIENCY INFORMATION AVAILABLE FROM YOUR RETAILER.

# PHYSICAL DATA AND SPECIFICATIONS (DOWNFLOW) U.S. AND CANADA MODELS

MODEL NUMBERS RGLR- SERIES	07EAMKR 07NAMKR	07EBRQR 07NBRQR	10EBRMR 10NBRMR	12EARMR 12NARMR	
100% High Input—BTU/Hr [kW] ②	75,000 [22]	75,000 [22]	100,000 [29]	125,000 [37]	
High Heating Capacity—BTU/Hr [kW] ①	60,000 [18]	60,000 [18]	80,000 [23]	100,000 [29]	
70% Low Input—BTU/Hr [kW]	52,500 [15]	52,500 [15]	70,000 [20]	87,500 [25]	
Low Heating Capacity—BTU/Hr [kW]	42,000 [12]	42,000 [12]	56,000 [16]	70,000 [20]	
Heating—Ext. Static Pressure [kPa]	.12 [.029]	.12 [.029]	.15 [.037]	.20 [.05]	
Blower (D x W) [mm]	11 x 7 [279 x 178]	11 x 10 [279 x 254]	11 x 10 [279 x 254]	11 x 10 [279 x 254]	
ECM Motor H.P. [W]	1/2 [373]	3/4 [559]	1 [746]	1 [746]	
Motor Full Load Amps.	7.7	9.6	12.8	12.8	
Unit Amps	8.7	12.0	12.0	12.0	
Maximum Overcurrent Protection	15	15	15	15	
Cooling CFM @ .5" [kPa] E.S.P. (Nominal) [L/s]	1200 [566]	1600 [755]	2000 [944]	2000 [944]	
Max. E.S.P. (In. W.C.) [kPa]	0.8 [0.2]	0.8 [0.2]	0.8 [0.2]	0.8 [0.2]	
Temperature Rise Range °F [°C]	High Fire	30-60 [17-33]	25-55 [14-31]	30-60 [17-33]	35-65 [19.4-36.0]
	Low Fire	20-50 [11-28]	20-50 [11-28]	25-55 [14-31]	30-60 [17-33]
Max. Outlet Air Temp. °F [°C]	165 [73.9]	165 [73.9]	165 [73.9]	185 [85]	
Standard Filter Size—Inches [mm]	(2) 12 x 20 [305 x 508]	(2) 14 x 20 [356 x 508]	(2) 14 x 20 [356 x 508]	(2) 14 x 20 [356 x 508]	
Approx. Shipping Weight (Lbs.) [kg]	115 [52]	115 [52]	120 [54]	140 [63]	
AFUE ①	80%	80%	80%	80%	

① In accordance with D.O.E. test procedures.

② See Conversion Kit Index Form for high altitude derate in U.S. applications. For Canadian applications, reference the furnace installation instructions.

## GENERAL TERMS OF LIMITED WARRANTY

Rheem will furnish a replacement for any part of this product which fails in normal use and service within the applicable period stated, in accordance with the terms of the limited warranty.

Gas Heat Exchanger Limited Warranty ..... Limited Lifetime  
Any Other Part ..... Ten (10) Years

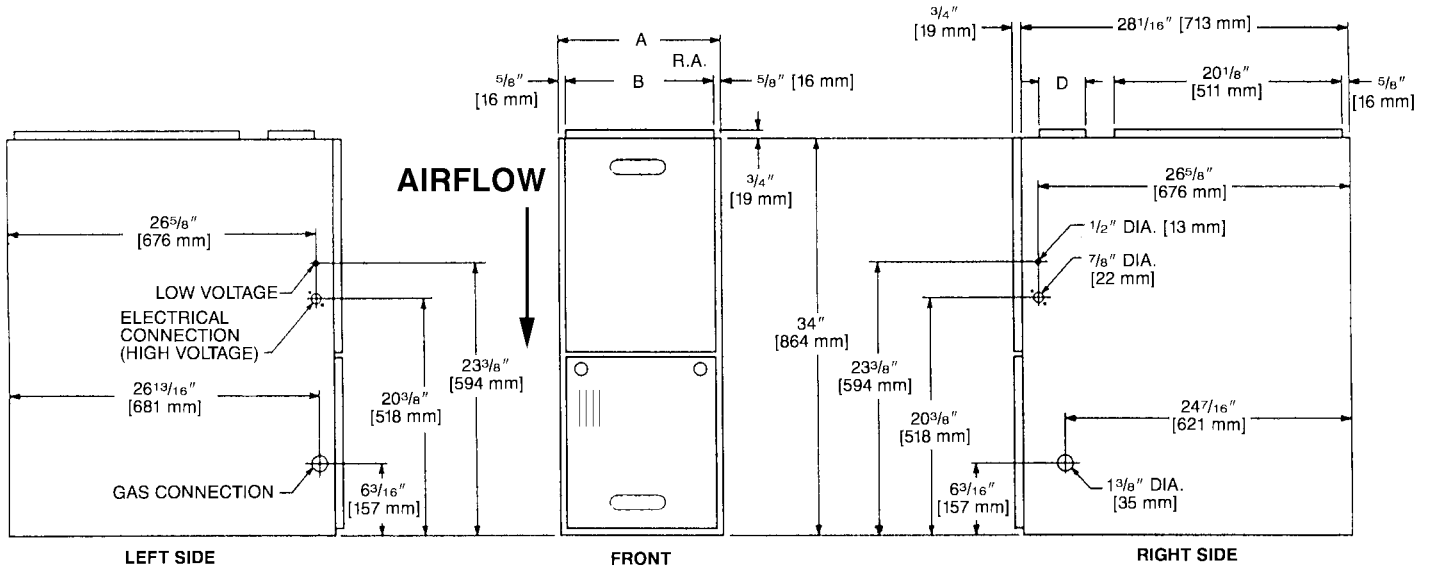
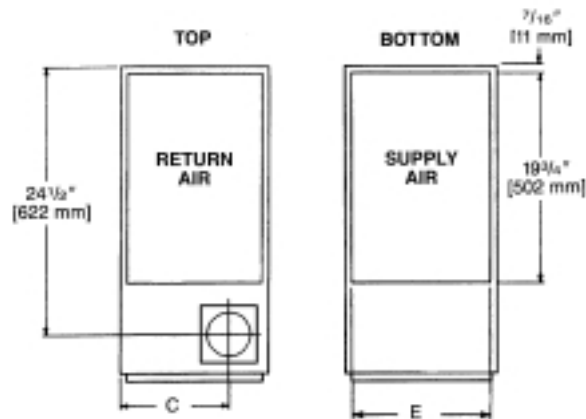
For Complete Details of the Limited Warranty, Including Applicable Terms and Conditions, See Your Local Installer or Contact the Manufacturer for a Copy.

## MODEL IDENTIFICATION—DOWNFLOW MODELS

<u>R</u>	<u>G</u>	<u>L</u>	<u>R</u>	<u>—</u>	<u>07E</u>	<u>A</u>	<u>M</u>	<u>K</u>	<u>R</u>
Rheem	Gas Furnace	Downflow	Design Series		Heating Input Designation	Variations	Blower Designation	Heating & Cooling Designation	Fuel Type
					Electric Ignition	A = Std. Cabinet	U = 11 x 6 [279 x 152 mm]	K = 600-1200 CFM [283-566 L/s]	R = Natural Gas, U.S. and Canadian Standard Furnace
					NO <sub>x</sub> Model	B = Wide Cabinet	M = 11 x 7 [279 x 178 mm]	M = 1200-2000 CFM [566-944 L/s]	
					Input BTU/HR		R = 11 x 10 [279 x 254 mm]	Q = 1000-1600 CFM [566-755 L/s]	
					07E 07N 75,000 [22 kW]				
					10E 10N 100,000 [29 kW]				
					12E 12N 125,000 [37 kW]				

[ ] Designates Metric Conversions

# DOWNFLOW DIMENSIONS



## DIMENSIONS AND CLEARANCE TO COMBUSTIBLE MATERIAL (INCHES) [mm]

MODEL RGLR-SERIES	A	B	C	D	E	REDUCED CLEARANCES (IN.) [mm]						
						LEFT SIDE	RIGHT SIDE	BACK	TOP	FRONT	VENT	SHIP. WGTs. (LBS.) [kg]
07A	17 1/2 [445]	16 11/32 [415]	12 1/8 [308]	Ⓛ	16 5/8 [422]	0	3 ②	0	1 [25]	3 [76]	6 [152] ③	110 [49.9]
07B	21 [533]	19 27/32 [504]	13 7/8 [352]	Ⓛ	20 1/8 [511]	0	0	0	1 [25]	3 [76]	6 [152] ③	115 [52.2]
10	21 [533]	19 27/32 [504]	13 7/8 [352]	Ⓛ	20 1/8 [511]	0	0	0	1 [25]	3 [76]	6 [152] ③	120 [54.4]
12	24 1/2 [622]	23 11/32 [593]	15 5/8 [397]	Ⓛ	23 5/8 [600]	0	0	0	1 [25]	3 [76]	6 [152] ③	140 [63.5]

NOTES: ① May require a 3" [76 mm] to 4" [102 mm] or 3" [76 mm] to 5" [127 mm] adapter.

② May be 0" [0 mm] with type B vent.

③ May be 1" [25 mm] with type B vent.

**Furnaces must be vented in accordance with the National Fuel Gas Code, ANSI Z223.1 and/or Can/CGA-B149 Installation Codes and in accordance with local codes.**

# BLOWER PERFORMANCE DATA—DOWNFLOW MODELS

MODEL RGLR-	BLOWER SIZE (D X W) INCHES [mm]	ECM MOTOR H.P. [W]	BLOWER SPEED	CFM [L/s] AIR DELIVERY EXTERNAL STATIC PRESSURE INCHES WATER COLUMN [kPa]
				.1 [.02]–.8 [.2]
07A	11 x 7 [279 x 178]	1/2 [373]	HIGH MED-HI MED LOW	1200 [566] 1000 [472] 800 [378] 600 [283]
07B	11 x 10 [279 x 254]	3/4 [559]	HIGH MED-HI MED LOW	1600 [755] 1400 [661] 1200 [566] 1000 [472]
10, 12	11 x 10 [279 x 254]	1 [746]	HIGH MED-HI MED LOW	2000 [944] 1600 [755] 1400 [661] 1200 [566]

NOTE: See Coil Specification Sheet for coil data.

[ ] Designates Metric Conversions

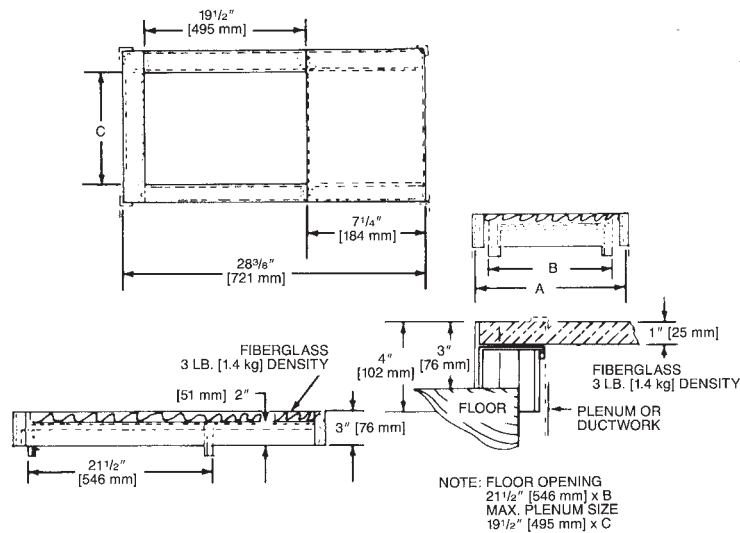
# ACCESSORIES—DOWNFLOW

**DOWNFLOW WARNING:** Unit design is certified for installation on non-combustible floor. A special factory supplied combustible floor sub-base is required when installing on a combustible floor. Failure to install the sub-base may result in fire, property damage and personal injury.

## COMBUSTIBLE FLOOR BASE DIMENSIONS

COMBUSTIBLE FLOOR BASE	USE WITH FURNACE SIZES	A IN. [mm]	B IN. [mm]	C IN. [mm]
RXGC-B17	RGLR-07EAMK	18 [457]	16 <sup>3</sup> / <sub>4</sub> [425]	14 <sup>3</sup> / <sub>4</sub> [451]
RXGC-B21	RGLR-07EBRQ, RGLR-10EBRM	21 <sup>1</sup> / <sub>2</sub> [546]	20 <sup>1</sup> / <sub>4</sub> [514]	18 <sup>1</sup> / <sub>4</sub> [464]
RXGC-B24	RGLR-12EARMR	25 [635]	23 <sup>3</sup> / <sub>4</sub> [603]	21 <sup>3</sup> / <sub>4</sub> [552]

[ ] Designates Metric Conversions



## RXPF-F01 and F02

**FOSSIL FUEL KITS**—are for use with Rheem Heat Pumps and Super Quiet 80 warm air furnaces. The RXPF-F02 also meets TVA requirements.

## RXGF-CC\*

**FILTER RACK**—Downflow top return mount.  
**NOTE:** Filter racks are shipped without filters.

\*Filters available through PROSTOCK®.

## FOR HIGH ALTITUDES:

**HIGH ALTITUDE OPTION CODE:** U.S. & Canada – None required for high altitudes.

**HIGH ALTITUDE CONVERSION KITS:** U.S. & Canada – None required for high altitudes.

### 80+ HIGH ALTITUDE INSTRUCTIONS

Caution: Always follow National Fuel Gas Code (NFGC) guidelines when converting for high altitudes. High altitude option codes are not required for these models. However, **the burner orifice size needs to be recalculated and verified** at elevations above 2000 ft. See Installation Instructions for more information.

**NOTE:** For Canadian installations only, an optional derate (manifold gas pressure reduction) method may be used to adjust the furnace for altitude. See Installation Instructions for more information. This optional method may **NOT** be used for U.S. installations.

## RXGW-B01 CHIMNEY ADAPTER:

See Installation Instructions for application limitations.

# NOTES

**Before proceeding with installation, refer to installation instructions packaged with each model, as well as complying with all Federal, State, Provincial, and Local codes, regulations, and practices.**

**Rheem Heating,  
Cooling and  
Water Heating**

P.O. Box 17010, Fort Smith, AR 72917



*"In keeping with its policy of continuous progress and product improvement, Rheem reserves the right to make changes without notice."*