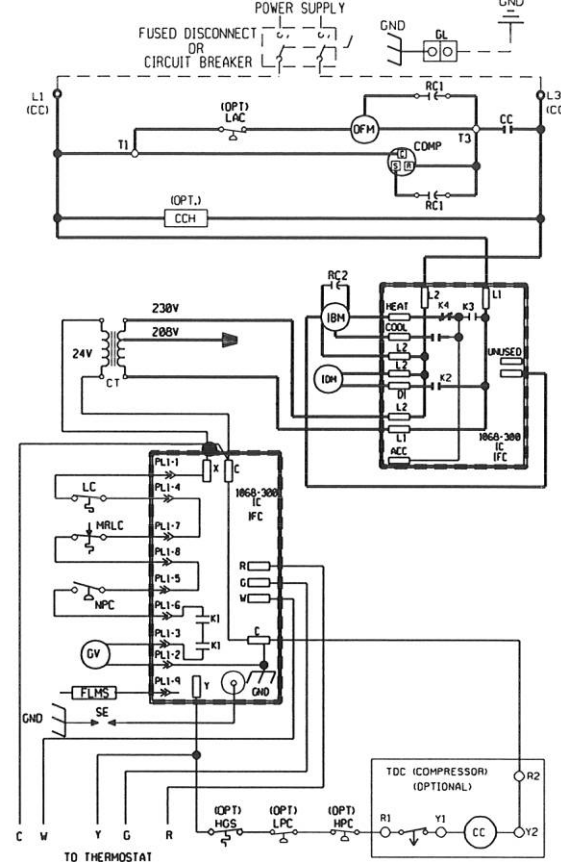


WIRING DIAGRAM

MODEL	FACTORY SET BLOWER SPEED	
	COOL	HEAT
2.0 TON W/40K HEAT	HIGH	HIGH
2.0 TON W/60K HEAT	HIGH	HIGH
2.5 TON W/60K HEAT	LOW	LOW
2.5 TON W/80K HEAT	LOW	HIGH
3.0 TON W/60K HEAT	HIGH	LOW
3.0 TON W/80K HEAT	HIGH	HIGH

WIRING SCHEMATIC

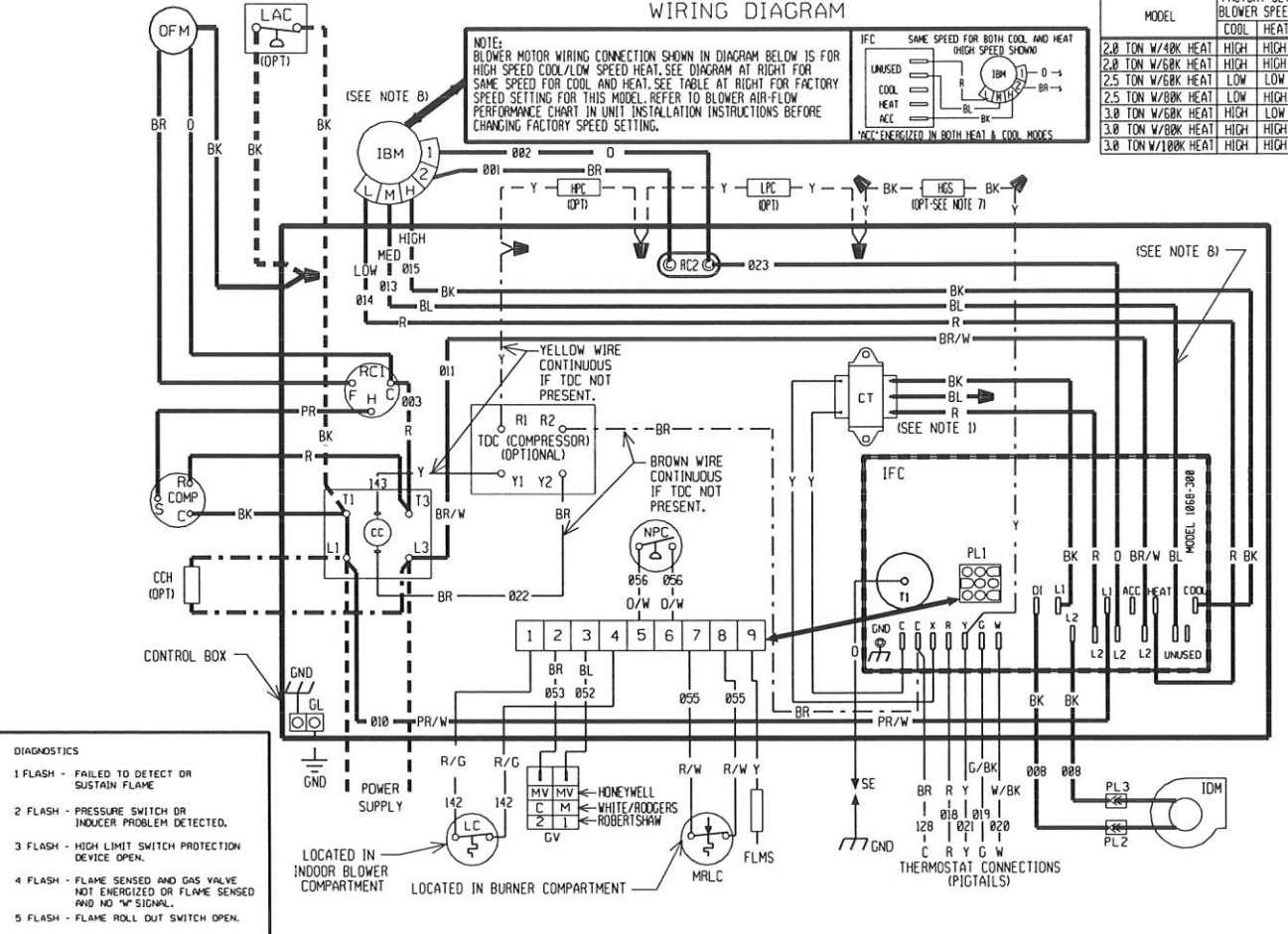


NOTE: BLOWER MOTOR WIRING CONNECTION SHOWN IN DIAGRAM BELOW IS FOR HIGH SPEED COOL/LOW SPEED HEAT. SEE DIAGRAM AT RIGHT FOR SAME SPEED FOR COOL AND HEAT. SEE TABLE AT RIGHT FOR FACTORY SPEED SETTING FOR THIS MODEL. REFER TO BLOWER AIR-FLOW PERFORMANCE CHART IN UNIT INSTALLATION INSTRUCTIONS BEFORE CHANGING FACTORY SPEED SETTING.

IFC SAME SPEED FOR BOTH COOL AND HEAT HIGH SPEED SHOWN

UNUSED
COOL
HEAT
ACC

IFC ENERGIZED IN BOTH HEAT & COOL MODES



- DIAGNOSTICS**
- 1 FLASH - FAILED TO DETECT OR SUSTAIN FLAME
 - 2 FLASH - PRESSURE SWITCH OR INDUCER PROBLEM DETECTED.
 - 3 FLASH - HIGH LIMIT SWITCH PROTECTION DEVICE OPEN.
 - 4 FLASH - FLAME SENSED AND GAS VALVE NOT ENERGIZED OR FLAME SENSED AND NO "W" SIGNAL.
 - 5 FLASH - FLAME ROLL OUT SWITCH OPEN.

WIRING INFORMATION

LINE VOLTAGE
-FACTORY STANDARD _____
-FACTORY OPTION - - - - -
-FIELD INSTALLED - - - - -

LOW VOLTAGE
-FACTORY STANDARD _____
-FIELD INSTALLED - - - - -

REPLACEMENT WIRE
-MUST BE THE SAME SIZE AND TYPE OF INSULATION AS ORIGINAL (105C. MIN.)

WARNING
-CABINET MUST BE PERMANENTLY GROUNDED AND CONFORM TO I.E.C., N.E.C., C.E.C., NATIONAL WIRING REGULATIONS, AND LOCAL CODES AS APPLICABLE.

NOTES

1. MAIN UNIT TRANSFORMER PRIMARY LEADS: 60 HZ. RED-COMMON BLUE-208 V BLACK-230 V INTERCHANGE BLACK & BLUE LEADS FOR 208 V TRANSFORMER OPERATION.
2. MOTORS & COMPRESSOR THERMALLY PROTECTED. CONNECTORS SUITABLE FOR USE WITH COPPER CONDUCTORS ONLY.
3. CONNECT FIELD WIRING IN GROUNDED RAINTIGHT CONDUIT TO 60 HZ FUSED DISCONNECT.
4. LOW VOLTAGE CIRCUIT IS N.E.C. CLASS 2 WITH A CLASS 2 TRANSFORMER 24 VOLTS, 50/60 HERTZ SUPPLIED.
5. REPLACEMENT FUSES MUST BE SAME TYPE & SIZE AS ORIGINAL.
6. HONEYWELL WHITE/RODGERS ROBERTSHAW
7. HGS LOCATED IN TOP OF COPELAND ZR**K1 COMPRESSORS ONLY.
8. MED. BLOWER SPEED AND BLUE MOTOR LEAD ON 2.5 - 4.0 TON MODELS ONLY.

COMPONENT CODES

- CC COMPRESSOR CONTACTOR
CCH CRANKCASE HEATER
COMP COMPRESSOR
CT CONTROL TRANSFORMER
FLMS FLAME SENSOR
GL GROUND LUG
GND GROUND
GV GAS VALVE
HPC HIGH PRESSURE CONTROL
IBM INDDOR BLOWER MOTOR
IDM INDUCED DRAFT MOTOR
IFC INTEGRATED FURNACE CONTROL
HGS HOT GAS SENSOR
LAC LOW AMBIENT COOLING CONTROL
LC LIMIT CONTROL
- LPC LOW PRESSURE CONTROL
MRLC MAN. RESET LIMIT CONTROL
NPC NEG. PRESSURE CONTROL
OFM OUTDOOR FAN MOTOR
OPT OPTIONAL
PL PLUG
RC RUN CAPACITOR
SE SPARK ELECTRODE
TDC TIME DELAY CONTROL
WIRE NUT

WIRE COLOR CODE

BK.....BLACK	G.....GREEN	PR.....PURPLE
BR.....BROWN	GY.....GRAY	R.....RED
BL.....BLUE	O.....ORANGE	W.....WHITE
		Y.....YELLOW

ELECTRICAL WIRING DIAGRAM

2.0 - 3.0 TON GAS/ELECTRIC
W/ INTEGRATED FURNACE CONTROL
W/PSC BLOWER MOTOR
208/230V, 1-PHASE

APPROVED: <i>KST</i>	CHECKED: <i>LCF</i>	ORIGINAL RELEASE NO.:
MODELED BY: ZJW	DATE: 04-29-14	R-1059S015
PART NO.:	90-23626-22	REV: 00