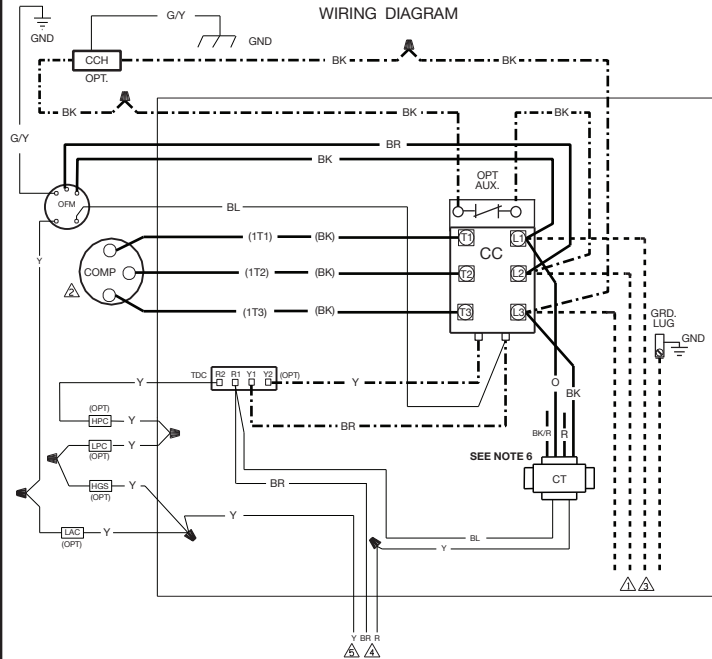
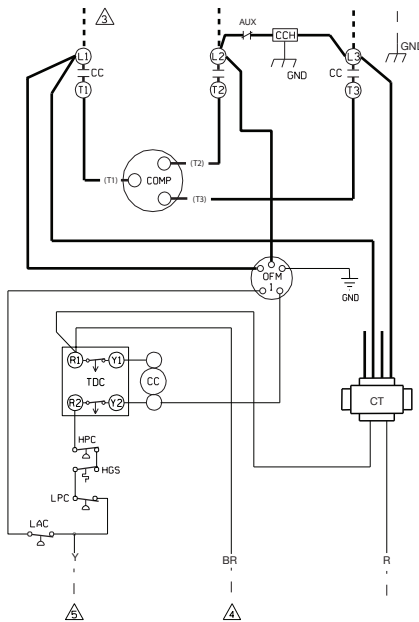


WIRING DIAGRAM



WIRING SCHEMATIC



COMPONENT CODES

AUX	AUXILIARY CONTACT
CC	COMPRESSOR CONTACTOR
CCH	CRANKCASE HEATER
CT	CONTROL TRANSFORMER
COMP	COMPRESSOR
GND	GROUND CHASSIS
HGS	HOT GAS SENSOR
HPC	HIGH PRESSURE CONTROL
LAC	LOW AMBIENT COOLING CONTROL
LPC	LOW PRESSURE CONTROL
OFM	OUTDOOR FAN MOTOR
OPT	OPTIONAL COMPONENT
RES	RESISTOR
SC	START CAPACITOR
SR	START RELAY
TDC	TIME DELAY CONTROL

NOTES

- CONNECTORS SUITABLE FOR USE WITH COPPER CONDUCTORS ONLY.
- COMPRESSOR MOTOR THERMALLY PROTECTED AND ALL 3 PHASE ARE PROTECTED UNDER PRIMARY SINGLE PHASE CONDITIONS.
- CONNECT FIELD WIRING IN GROUND RAIN TIGHT CONDUIT TO FUSED DISCONNECT VOLTAGE, HERTZ, AND PHASE PER RATING PLATE.
- LOW VOLTAGE CIRCUIT TO BE N.E.C. CLASS 2 WITH A CLASS 2 TRANSFORMER 24 VOLT, 50 OR 60 HERTZ.
- TO THERMOSTAT SUB-BASE, REFER TO SYSTEM SCHEMATICS OR SCHEMATICS ON INDOOR SECTION FOR LOW VOLTAGE CONTROL WIRING.
- MAIN UNIT TRANSFORMER PRIMARY LEADS:
208/230-460V 60HZ: BLACK-COM, RED - 208V, ORANGE - 230V, BLACK/RED - 460V
220/240V 50HZ: BLACK-COM, RED - 220V, ORANGE - 230V
380V 60HZ: ORANGE-COM, BLUE - 380V

WIRING INFORMATION

LINE VOLTAGE

-FACTORY STANDARD _____

-FACTORY OPTION - - - - -

-FIELD INSTALLED - - - - -

LOW VOLTAGE

-FACTORY STANDARD - - - - -

-FIELD INSTALLED - - - - -

REPLACEMENT WIRE

-MUST BE THE SAME SIZE AND TYPE OF INSULATION AS ORIGINAL (105C. MIN.)

WARNING

-CABINET MUST BE PERMANENTLY GROUNDED AND CONFORM TO I.E.C., N.E.C., C.E.C., NATIONAL WIRING REGULATIONS, AND LOCAL CODES AS APPLICABLE.

WIRE COLOR CODE

BK.....BLACK	G.....GREEN	PR.....PURPLE
BR.....BROWN	GY.....GRAY	R.....RED
BL.....BLUE	O.....ORANGE	W.....WHITE
		Y.....YELLOW

ELECTRICAL WIRING DIAGRAM CONDENSING UNITS

208/230, 380, 460V, 3 PH, 60 Hz,
220/220, 380/415V, 3 PH, 50 Hz

MODELED BY: TEW	DATE: 06-09-17	PART NO.:	REV.:
		90-101229-47	05