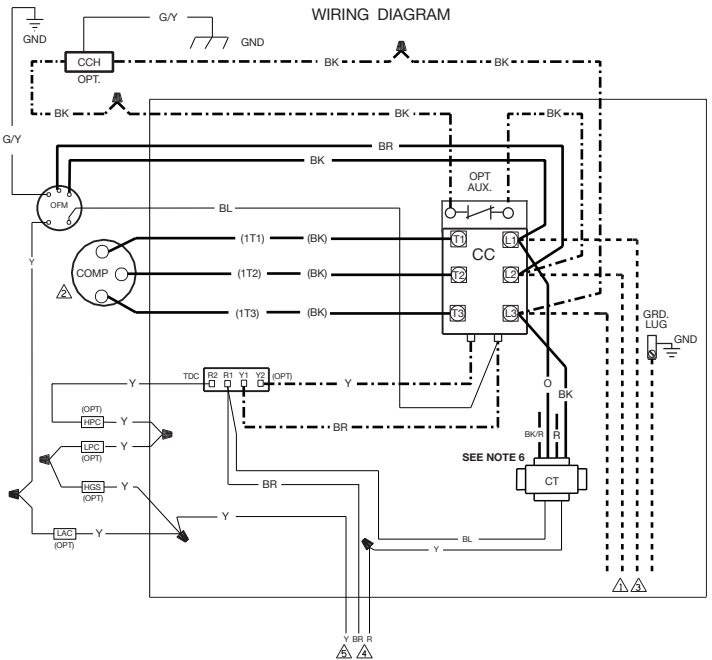
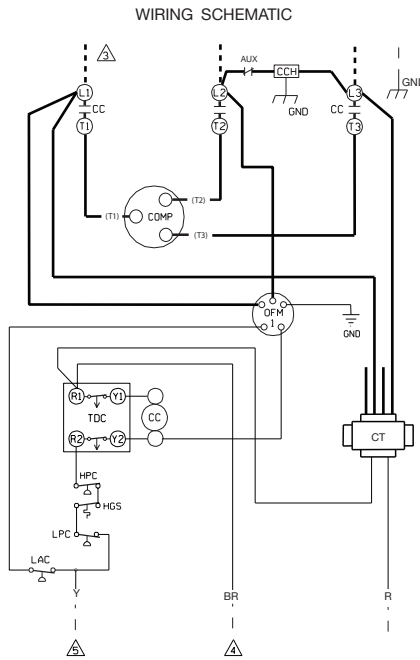


WIRING DIAGRAM



WIRING SCHEMATIC



COMPONENT CODES

- AUX AUXILIARY CONTACT
- CC COMPRESSOR CONTACTOR
- CCH CRANKCASE HEATER
- CT CONTROL TRANSFORMER
- COMP COMPRESSOR
- GND GROUND CHASSIS
- HGS HOT GAS SENSOR
- HPC HIGH PRESSURE CONTROL
- LAC LOW AMBIENT COOLING CONTROL
- LPC LOW PRESSURE CONTROL
- OFM OUTDOOR FAN MOTOR
- OPT OPTIONAL COMPONENT
- RES RESISTOR
- SC START CAPACITOR
- SR START RELAY
- TDC TIME DELAY CONTROL

NOTES

1. CONNECTORS SUITABLE FOR USE WITH COPPER CONDUCTORS ONLY.
2. COMPRESSOR MOTOR THERMALLY PROTECTED AND ALL 3 PHASE ARE PROTECTED UNDER PRIMARY SINGLE PHASE CONDITIONS.
3. CONNECT FIELD WIRING IN GROUNDED RAINTIGHT CONDUIT TO FUSED DISCONNECT VOLTAGE, HERTX, AND PHASE PER RATING PLATE.
4. LOW VOLTAGE CIRCUIT TO BE N.E.C. CLASS 2 WITH A CLASS 2 TRANSFORMER 24 VOLT, 50 OR 60 HERTZ.
5. TO THERMOSTAT SUB-BASE, REFER TO SYSTEM SCHEMATICS OR SCHEMATICS ON INDOOR SECTION FOR LOW VOLTAGE CONTROL WIRING.
6. MAIN UNIT TRANSFORMER PRIMARY LEADS:
 208/230-460V 60HZ: BLACK-COM, RED - 208V,
 ORANGE - 230V, BLACK/RED - 460V
 220/240V 50HZ: BLACK-COM, RED - 220V, ORANGE - 230V
 380V 60HZ: ORANGE-COM, BLUE - 380V

WIRING INFORMATION

- LINE VOLTAGE
- FACTORY STANDARD _____
 - FACTORY OPTION - - - - -
 - FIELD INSTALLED - - - - -
- LOW VOLTAGE
- FACTORY STANDARD - - - - -
 - FIELD INSTALLED - - - - -
- REPLACEMENT WIRE
- MUST BE THE SAME SIZE AND TYPE OF INSULATION AS ORIGINAL (105C. MIN.)
- WARNING
- CABINET MUST BE PERMANENTLY GROUNDED AND CONFORM TO I.E.C., N.E.C., C.E.C., NATIONAL WIRING REGULATIONS, AND LOCAL CODES AS APPLICABLE.

WIRE COLOR CODE

- | | | |
|--------------|--------------|---------------|
| BK.....BLACK | G.....GREEN | PR.....PURPLE |
| BR.....BROWN | GY.....GRAY | R.....RED |
| BL.....BLUE | O.....ORANGE | W.....WHITE |
| | | Y.....YELLOW |

ELECTRICAL WIRING DIAGRAM CONDENSING UNITS

208/230, 380, 460V, 3 PH, 60 Hz,
220/220, 380/415V, 3 PH, 50 Hz

MODELED BY: TEW	DATE: 06-09-17	PART NO.: 90-101229-47	REV.: 04
--------------------	-------------------	---------------------------	-------------