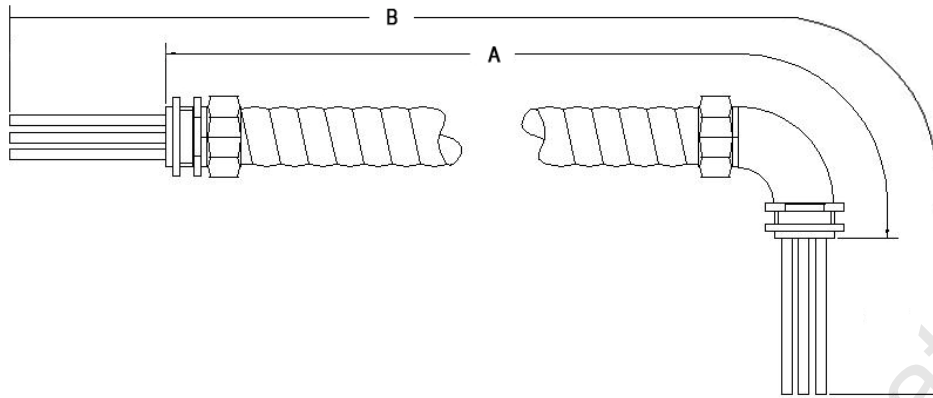


REV	NOTES	DATE

**Fig. 1:**



1. **Description** - Wiring whips for HVAC applications. Whip assembly consists of liquid tight flexible nonmetallic conduit, three insulated conductors, and two nonmetallic liquid tight conduit fittings (one straight and one ninety degree elbow). Whips are suitable for installation per Article 356 of the *National Electrical Code (NFPA70)*.
2. **Conduit Specifications:**
  - a. Size - 1/2 in. Trade Size
  - b. Type - LFNC (General Type Liquid Tight Flexible Nonmetallic Conduit)
  - c. Subtype - LFNC-B (aka Type-B or FNMC-B)
  - d. Length - 72 +1/-0.5 in. [1828 +25.4/-12.7 mm]. See Fig. 1, Dimension A. Length includes connectors
  - e. Color - Gray
  - f. Use Ratings - Outdoor Use, Direct Burial
  - g. Temperature Rating - 60C minimum
3. **Fitting Specifications:**
  - a. Type (Fitting 1) - Nonmetallic straight fitting - removable
  - b. Type (Fitting 2) - Nonmetallic 90-degree elbow fitting – may be removable or integral to conduit
  - c. Connection - 1/2 in. NPT threaded connectors with gasket and locking nut
  - d. Application - LFNC-B (aka Type-B or FNMC-B)
  - e. Color - Gray
4. **Conductor Specifications:**
  - a. Size - 10 AWG X 3
  - b. Number of Conductors - Three (3)
  - c. Type - Stranded Copper
  - d. Length - 92 +1/-0.5 in. [2336 +25.4/-12.7 mm] Note: See Fig. 1, Dimension B.
  - e. Insulation Type - THHN
  - f. Insulation Voltage Rating - 600V minimum
  - g. Insulation Temperature Rating - 105C minimum
  - h. Color - Green, Red, and Black (one each)
5. **Agency Certifications** - All conduit, conduit fittings, and conductors shall be UL and C-UL Listed for the ratings shown.

Part No. [s]

Drawn By: DGR      10/31/07  
Reviewed By: WCM      10/31/07  
Date:

**RHEEM CONFIDENTIAL INFORMATION.** NO REVISION TO DESIGN, MATERIAL, TOOLING OR PROCESS IS ACCEPTABLE WITHOUT PRIOR APPROVAL FROM RHEEM THROUGH A REVISED ENGINEERING SPECIFICATION AND A RESAMPLING OF PARTS. THE SUPPLIER IS RESPONSIBLE FOR NOTIFYING RHEEM PARTS DEPARTMENT AND PURCHASING DEPARTMENTS IN WRITING OF ANY CHANGES AFFECTING PRODUCT QUALITY, PERFORMANCE, RELIABILITY, PACKAGING, DELIVERY OR WORKMANSHIP. ANY DOCUMENTS REFERRED TO ON THIS DRAWING ARE INCLUDED IN THE SPECIFICATIONS FOR THIS COMPONENT.



**Parts  
Engineering**

**HVAC WHIP 1/2 in. X 6 ft.  
10 AWG X 3**

**849040**

Sheet 1 of 2

REV	NOTES	DATE

**6. Individual Packaging:**

- a. Heat sealed poly bag, min. 3 mil thickness [0.0762 mm]
- b. Marking on Individual Packaging - Packaging shall include the following information (min. font size 16 pt):
  - i. Conduit Length
  - ii. Conduit Size Trade Size
  - iii. Conductor Size
  - iv. Number of Conductors
  - v. Fitting Types
  - vi. Country of Origin

**獨立包裝**

- a. 包裝應為熱融膠密封的塑膠袋，袋子的厚度最少要 3 mil ( 0.0762 mm)
- b. 在包裝上的標誌應包含以下資料( 字体大小至少小要 16pt 以上)
  - i. 導管的長度
  - ii. 導管的尺寸大小
  - iii. 電線的尺寸
  - iv. 電線的數量
  - v. 與主機連接的兩端接頭的形式
  - vi. 製造國

**7. Bulk Packaging:**

- a. Twelve (12) whips per carton
- b. Carton Size - Approximately 21-1/2 in. x 10-1/4 in. x 12-1/4 in. [54 cm x 26 cm x 31 cm]
- c. Carton material:
  - i. Double wall construction
  - ii. Complies with ECT (edge crush test) of at least 100 pounds/in. [7.03 kg/cm]
  - iii. Gross weight limit should be at least 65 pounds [29.5 kg]
- d. Markings - Packaging shall include the following information (min. font size 16 pt):
  - i. Rheem Part Number
  - ii. Description
  - iii. Quantity
  - iv. Country of Origin
  - v. Rheem standard bar code requirements (to be provided by Rheem purchasing agent)

**大量包裝**

- a. 每一箱應要有 12 個管線
- b. 紙箱的尺寸 - 大約 21-1/2 英吋 x 10-1/4 英吋 x 12-1/4 英吋 (54 公分 x 26 公分 x 31 公分)
- c. 紙箱的質材
  - i. 紙箱應為雙面厚度的結構
  - ii. 遵守 ECT (Edge crush test - 是一種標準規範專門測試紙箱的硬度是否耐撞)，至少要承受 100 磅/英寸或 7.03 公斤/公分
  - iii. 紙箱承重限制最多 65 磅或 29.5 公斤
- d. 在紙箱的包裝上應含以下資料(字体大小至少小要 16pt 以上)
  - i. Rheem 的產品號碼
  - ii. 產品的敘述
  - iii. 箱內產品的數量
  - iv. 製造國
  - v. Rheem 的產品條碼 ( 會由 Rheem 所提供)

Part No. [s]

Drawn By: DGR 10/31/07  
 Reviewed By: WCM 10/31/07  
 Date:

**RHEEM CONFIDENTIAL INFORMATION.** NO REVISION TO DESIGN, MATERIAL, TOOLING OR PROCESS IS ACCEPTABLE WITHOUT PRIOR APPROVAL FROM RHEEM THROUGH A REVISED ENGINEERING SPECIFICATION AND A RESAMPLING OF PARTS. THE SUPPLIER IS RESPONSIBLE FOR NOTIFYING RHEEM PARTS DEPARTMENT AND PURCHASING DEPARTMENTS IN WRITING OF ANY CHANGES AFFECTING PRODUCT QUALITY, PERFORMANCE, RELIABILITY, PACKAGING, DELIVERY OR WORKMANSHIP. ANY DOCUMENTS REFERRED TO ON THIS DRAWING ARE INCLUDED IN THE SPECIFICATIONS FOR THIS COMPONENT.



**Parts Engineering**

**HVAC WHIP 1/2 in. X 6 ft.  
10 AWG X 3**

**849040**

Sheet 2 of 2