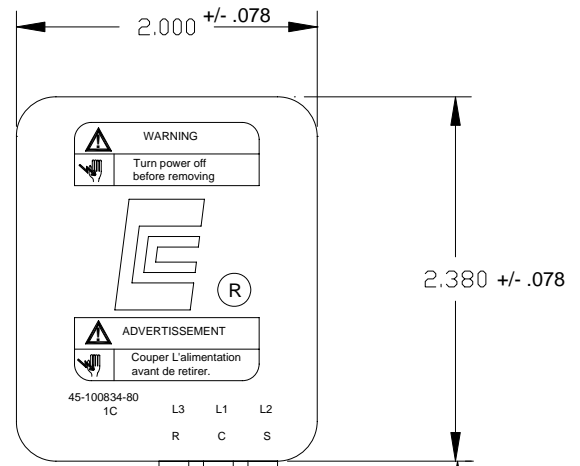
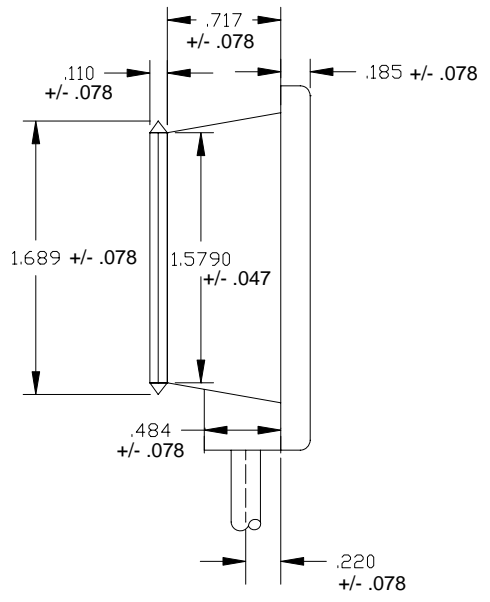
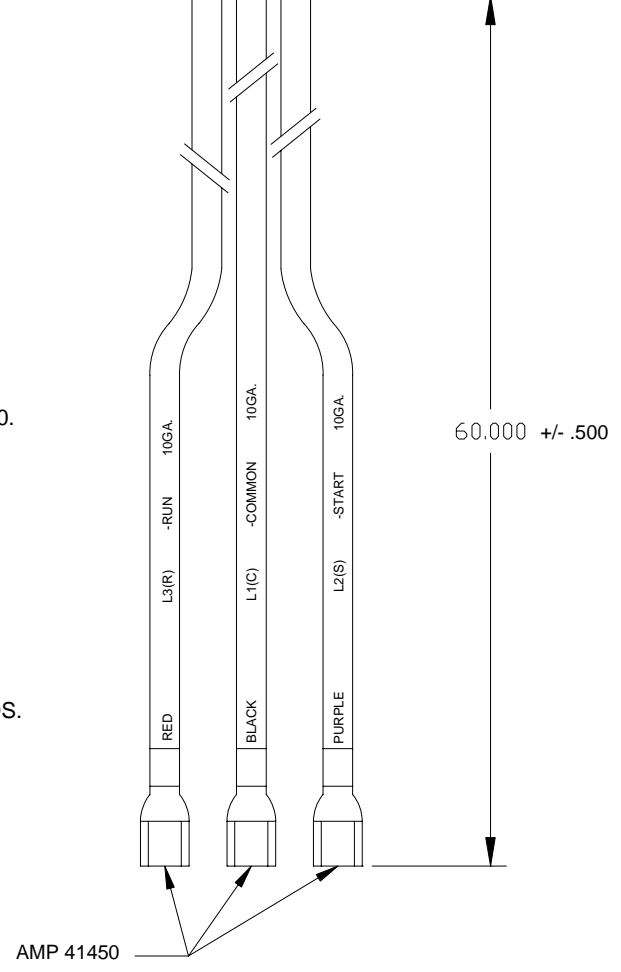


REV	NOTES	DATE



NOTES:

1. POWER CABLE LABEL TO BE HOT-STAMPED ON FRONT SURFACE OF CABLE.
2. LABELS SHALL BE FREE FROM WRINKLES, STREAKS, BLISTERS AND ANY OTHER IMPERFECTIONS.
3. UNLESS OTHERWISE SPECIFIED, ALL WIRE SHALL BE 2/64" MOISTURE RESISTANT, PVC UL STYLE 1230.
4. THE CUSTOMER PART NUMBER (45-100834-80) AND THE UL IDENTIFIER CODE (1C) SHALL BE PROVIDED ON THE PART.
5. ALL PLUGS TO BE MATED WITH STANDARD FUSITE ON COPELAND COMPRESSORS - 0.530" (13.46 MM) DIAMETER PIN CIRCLE.
6. WIRE SHALL BE 105° C RATING AWM 1 TO UL STANDARDS OR 105° RATING TO EN/IEC STANDARDS.



Part No. [s]

Drawn By: DGR	10/26/07
Reviewed By: WCM	10/26/07
Date:	

**RHEEM CONFIDENTIAL INFORMATION.** NO REVISION TO DESIGN, MATERIAL, TOOLING OR PROCESS IS ACCEPTABLE WITHOUT PRIOR APPROVAL FROM RHEEM THROUGH A REVISED ENGINEERING SPECIFICATION AND A RESAMPLING OF PARTS. THE SUPPLIER IS RESPONSIBLE FOR NOTIFYING RHEEM PARTS DEPARTMENT AND PURCHASING DEPARTMENTS IN WRITING OF ANY CHANGES AFFECTING PRODUCT QUALITY, PERFORMANCE, RELIABILITY, PACKAGING, DELIVERY OR WORKMANSHIP. ANY DOCUMENTS REFERRED TO ON THIS DRAWING ARE INCLUDED IN THE SPECIFICATIONS FOR THIS COMPONENT.



## Plug / Harness Copeland Compressor

**45-100834-80**