

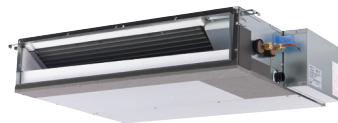
**SUBMITTAL DATA: SEZ-KD09NA4\*\* & SUZ-KA09NA**

9,000 BTU/H HORIZONTAL-DUCTED HEAT-PUMP SYSTEMS

Job Name:	Location:	Date:
Purchaser:	Engineer:	
Submitted to:	For <input type="checkbox"/> Reference <input type="checkbox"/> Approval <input type="checkbox"/> Construction	
System Designation:	Schedule No.:	

**\*\*APPLIES TO INDOOR UNIT:**

- SEZ-KD09NA4
- SEZ-KD09NA4.TH
- SEZ-KD09NAR1.TH
- SEZ-KD09NA4R1.TH



Indoor Unit: SEZ-KD09NA4\*\*



Outdoor Unit: SUZ-KA09NA

**GENERAL FEATURES**

- Horizontal-ducted indoor unit for concealed
- Ultra thin body: 7-7/8" high
- Built-in drain mechanism for condensate removal; lifts to 21-11/16"
- Air filter is included with indoor unit
- Quiet operation — as low as 23 dBA
- Indoor unit powered from outdoor unit using A-Control
- AUTO fan speed control
- Automatic restart following a power outage
- Limited warranty: five years parts and seven years compressors

**ACCESSORIES**
**Indoor Unit**

- Filter Box with MERV 8 Filters (FBL1-1)
- Bottom Return Plate (BRP-1)

**Outdoor Unit**

- Drain Socket (MAC-860DS)
- Drain Pan Heater (MAC-640BH-U)
- Three-pole Disconnect Switch (TAZ-MS303)
- Air Outlet Guide (MAC-856SG)
- Mounting Base (DSD-400N)
- Mounting Pad (ULTRILITE1)
- Wall-mounting Brackets (CWMB1)

**Controller Options**

- Wireless Wall-mounted Remote Controller Kit (MHK1)\*
- Portable Central Controller (MCCH1)\*
- Outdoor Air Sensor (MOS1)\*
- Wired Wall-mounted Controller (PAR-31MAA)\*
- Simple MA Remote Controller (PAC-YT53CRAU)\*

\*See Submittal for information on each option.

- Remote Temperature Sensor (M21-JKO-307)
- Hand-held Wireless Remote Controller (PAR-FL32MA; req.PAR-FA32MA-E)
- Wireless Signal Receiver Module PAR-FA32MA (for PAR-FL32MA-E)
- Lockdown Bracket for Hand-held Controller (RCMKP1CB)



# SPECIFICATIONS: SEZ-KD09NA4\*\* & SUZ-KA09NA

### Cooling\*

Rated Capacity ..... 8,100 Btu/h  
 Capacity Range ..... 3,800 - 10,900 Btu/h  
 SEER ..... 15.0  
 Total Input ..... 670 W

### Heating at 47°F\*

Rated Capacity ..... 10,900 Btu/h  
 Capacity Range ..... 4,800 - 14,100 Btu/h  
 HSPF ..... 10.0  
 Total Input ..... 1,020 W

### Heating at 17°F\*

Rated Capacity ..... 6,700 Btu/h  
 Rated Total Input ..... 810 W  
 Maximum Capacity\*\* ..... 6,700 Btu/h  
 Maximum Total Input ..... 1,000 W

### \* Rating Conditions per AHRI Standard

Cooling | Indoor: 80° F (27° C) DB / 67° F (19° C) WB  
 Cooling | Outdoor: 95° F (35° C) DB / 75° F (24° C) WB  
 Heating at 47°F | Indoor: 70° F (21° C) DB / 60° F (16° C) WB  
 Heating at 47°F | Outdoor: 47° F (8° C) DB / 43° F (6° C) WB  
 Heating at 17° F | Indoor: 70° F (21° C) DB / 60° F (16° C) WB  
 Heating at 17° F | Outdoor: 17° F (-8° C) DB / 15° F (-9° C) WB

**\*\* Maximum Capacity is at full speed and performance for INVERTER-driven System.**

### Electrical Requirements

Power Supply ..... 208 / 230V, 1-Phase, 60 Hz  
 Recommended Fuse/Breaker Size ..... 15 A

### OPERATING CONDITIONS

		Indoor Intake Air Temp.	Outdoor Intake Air Temp.
Cooling	Maximum	90° F (32° C) DB 73° F (23° C) WB	115° F (46° C) DB
	Minimum	67° F (19° C) DB 57° F (14° C) WB	14° F (-10° C) DB
Heating	Maximum	80° F (27° C) DB 67° F (19° C) WB	75° F (24° C) DB 65° F (18° C) WB
	Minimum	70° F (21° C) DB 60° F (16° C) WB	-4° F (-20° C) DB -5° F (-21° C) WB

### Voltage

Indoor - Outdoor S1-S2 ..... AC 208 / 230V  
 Indoor - Outdoor S2-S3 ..... DC ±24V

### Indoor Unit

MCA ..... 1 A  
 Fan Type x Quantity ..... Sirocco Fan x 2  
 Blower Motor Type ..... Direct-driven DC Brushless Motor  
 Blower Motor Output ..... 96 W  
 Blower Motor (ECM) ..... 0.51 F.L.A.  
 Airflow (Lo - Med - Hi) ..... 194 - 247 - 317 Dry CFM  
 174 - 222 - 285 Wet CFM  
 Air Filter ..... Polypropylene Honeycomb  
 External Static Pressure ..... 0.02 - 0.06 - 0.14 - 0.20"WG  
 Sound Pressure Level (Lo - Med - Hi) ..... 23 - 26 - 30 dB(A)

DIMENSIONS	UNIT INCHES / MM
W	31-1/8 / 790
D	27-9/16 / 700
H	7-7/8 / 200

Weight ..... 42 lbs. / 19 kg  
 External Finish ..... Galvanized-steel Sheets  
 Field Drainpipe Size O.D. .... 1-1/4" / 32 mm

### Outdoor Unit

Compressor ..... DC Inverter-driven  
 MCA ..... 12 A  
 MOCP ..... 15 A  
 Fan Motor (ECM) ..... 0.50 F.L.A.  
 Sound Pressure Level  
     Cooling ..... 46 dB(A)  
     Heating ..... 50 dB(A)

DIMENSIONS	INCHES / MM
W	31-1/2 / 800
D	11-1/4 / 285
H	21-5/8 / 550

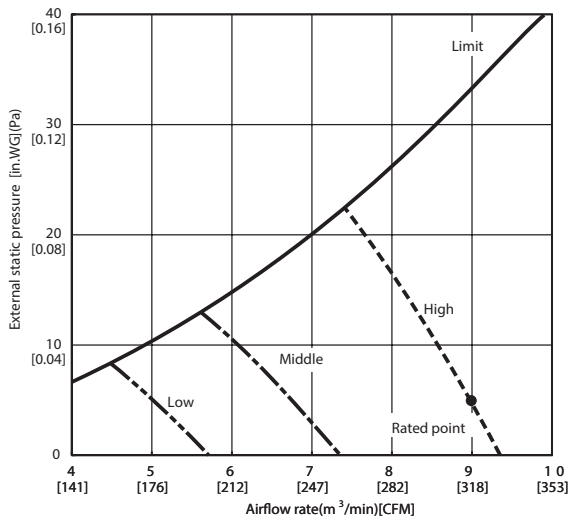
Weight ..... 66 lbs. / 30 kg  
 External Finish ..... Munsell No. 3Y 7.8 / 1.1  
 Refrigerant Type ..... R410A  
 Refrigerant Pipe Size O.D.  
     Gas Side ..... 3/8" / 9.52 mm  
     Liquid Side ..... 1/4" / 6.35 mm  
 Max. Refrigerant Pipe Length ..... 65' / 19 m  
 Max. Refrigerant Pipe Height Difference ..... 40' / 12 m  
 Connection Method ..... Flared

Notes:

# SEZ-KD09NA4\*\* INDOOR FAN PERFORMANCE AND CORRECTED AIR FLOW CHARTS

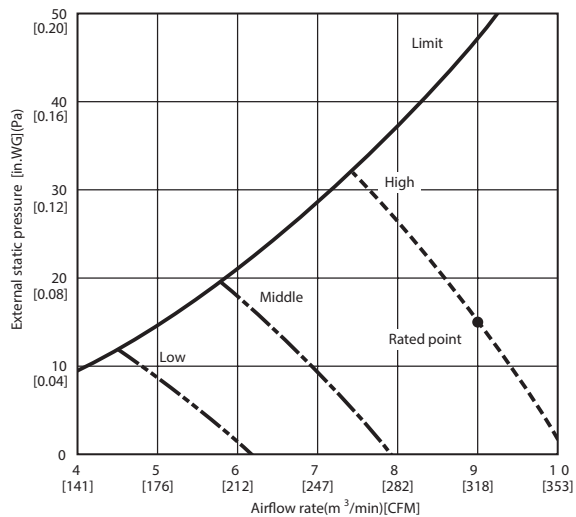
SEZ-KD09NA4\*\*

(External static pressure 0.02[in.WG](5P a) 208/230V 60Hz



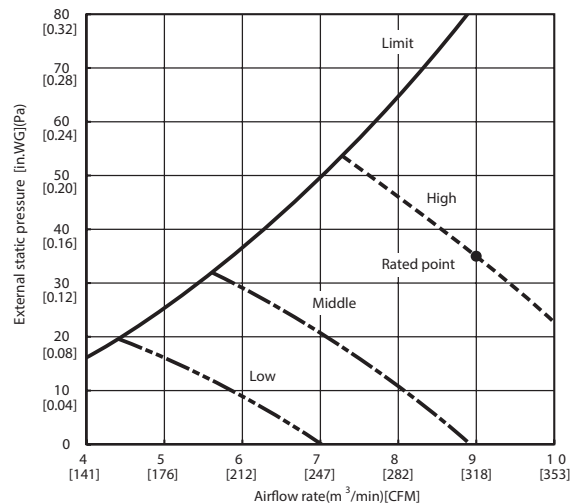
SEZ-KD09NA4\*\*

(External static pressure 0.06[in.WG](15P a) 208/230V 60Hz



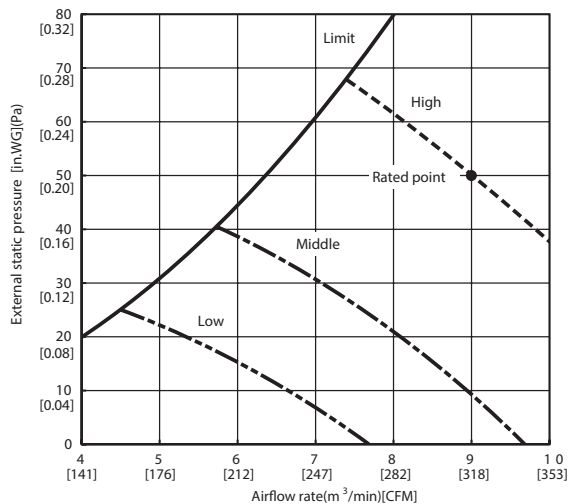
SEZ-KD09NA4\*\*

(External static pressure 0.14[in.WG](35P a) 208/230V 60Hz



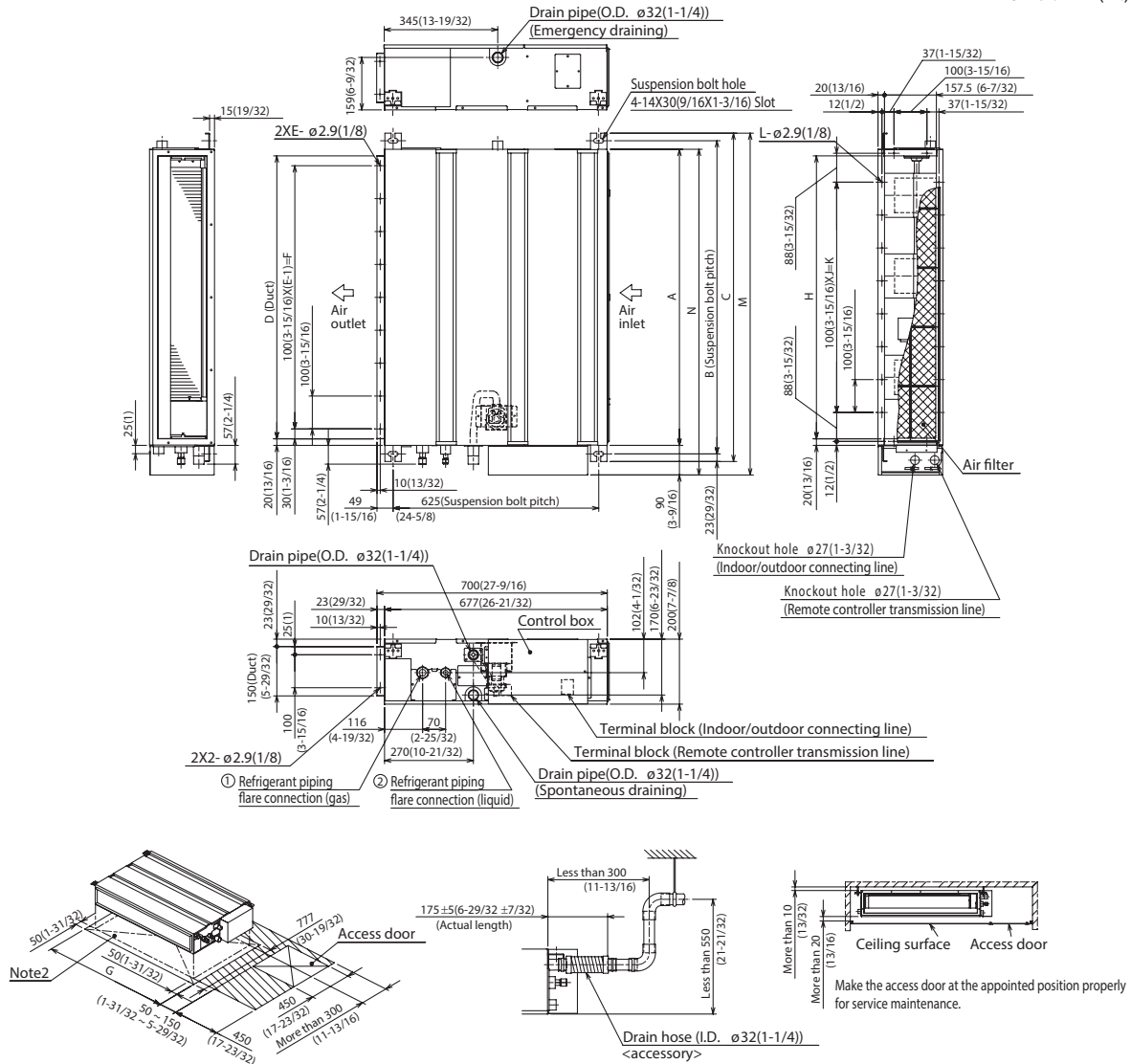
SEZ-KD09NA4\*\*

(External static pressure 0.20[in.WG](50P a) 208/230V 60Hz



# DIMENSIONS: SEZ-KD09NA4\*\*

Unit : mm(in.)



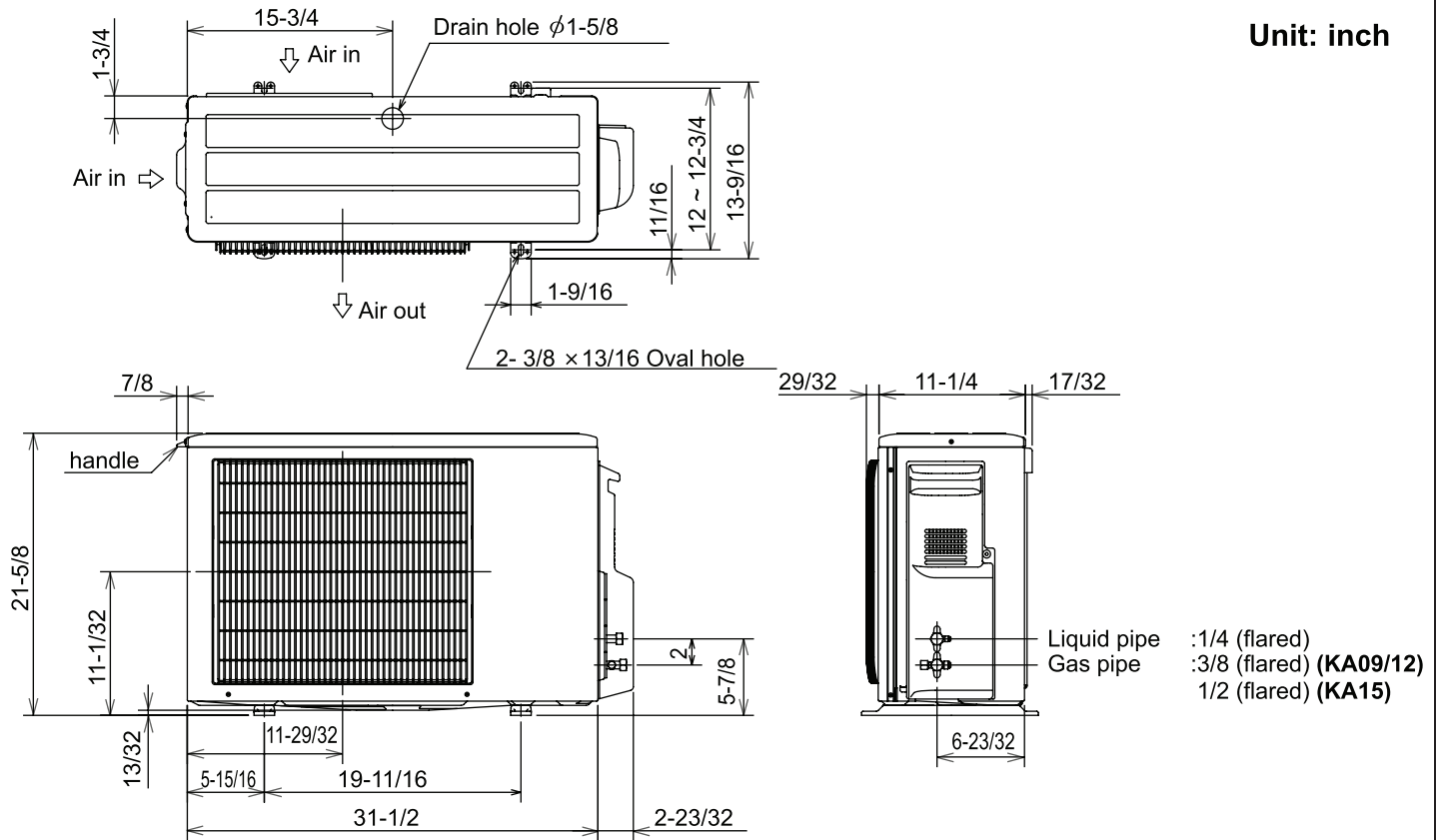
Required space for service and maintenance

Model	mm(in.)														① Gas pipe	② Liquid pipe
	A	B	C	D	E	F	G	H	J	K	L	M	N			
SEZ-KD09NA4**	700 (27-9/16)	752 (29-5/8)	798 (31-7/16)	660 (26)	7	600 (23-5/8)	800 (31-1/2)	660 (26)	5	500 (19-11/16)	16	839 (33-1/16)	790 (31-1/8)	ø9.52(3/8)	ø6.35(1/4)	
SEZ-KD12NA4**	900 (35-7/16)	952 (37-1/2)	998 (39-5/16)	860 (33-7/8)	9	800 (31-1/2)	1000 (39-3/8)	860 (33-7/8)	7	700 (27-9/16)	20	1039 (40-29/32)	990 (39)	ø12.7(1/2)		
SEZ-KD15NA4**	1100 (43-5/16)	1152 (45-3/8)	1198 (47-3/16)	1060 (41-3/4)	11	1000 (39-3/8)	1200 (47-1/4)	1060 (41-3/4)	9	900 (35-7/16)	24	1239 (48-25/32)	1190 (46-7/8)			

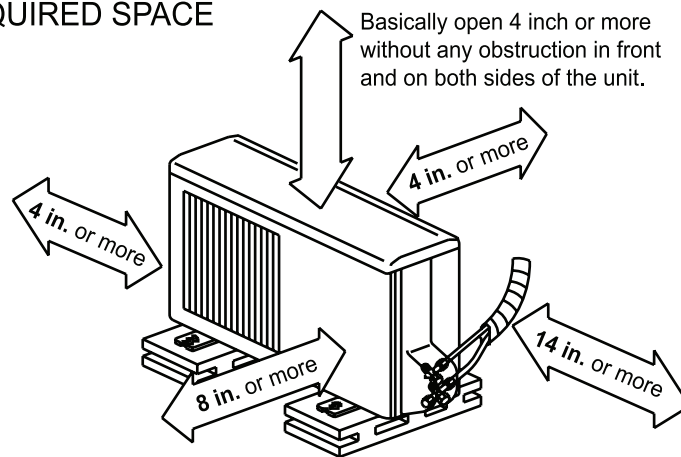
- Note1. Use M10 screw for the suspension bolt (field supply).  
 2. Keep the service space for the maintenance at the bottom.  
 3. This chart indicates for SEZ-KD15NA4\*\* model, which has 3 fans.  
 SEZ-KD09, 12NA4\*\* models have 2 fans.  
 SEZ-KD18NA4\*\* models have 4 fans.  
 4. In case an inlet duct is used, remove the air filter (supply with the unit), then install the filter (field supply) at suction side.

# DIMENSIONS: SUZ-KA09NA

**Unit: inch**



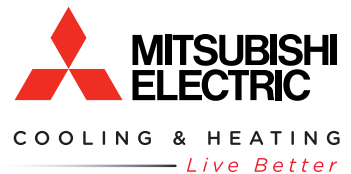
## REQUIRED SPACE



Open two sides of left, right, or rear side.



**Intertek**



1340 Satellite Boulevard  
 Suwanee, GA 30024  
 Tele: 678-376-2900 • Fax: 800-889-9904  
 Toll Free: 800-433-4822  
 www.mehvac.com