

Job Name: \_\_\_\_\_

System Reference: \_\_\_\_\_ Date: \_\_\_\_\_



Indoor Unit: PVA-A36AA4



Outdoor Unit: PUZ-HA36NHA4

### ACCESSORIES:

#### Indoor Unit

- Condensate Pump (BlueDiamond X87-711/721; 115/230V)
- Condensate Pump (Sauermann SI30-115/230; 115/230V)
- Relay Kit (CN24RELAY-KIT-CM3)
- Fan Speed Indication Adapter (PAC-735)
- Humidifier Control Relay (PAC-740)

#### Outdoor Unit

- Air Outlet Guide (PAC-SG59SG-E [x2])
- Wind Baffle (WB-PA2 [x2])
- \*Allows operation to 0° F (-18° C)
- Mounting Base (QSMS1202)
- Wall Bracket (QSWB2000M-1)

#### Controls

- Wireless Controller (MHK1)
- Advanced Wired Controller (PAR-31MAA)
- Simple Wired Controller (PAC-YT53CRAU)
- M-NET Adapter (PAC-SF83MA-E)
- Temperature Sensor (PAC-SE41TS)

### SPECIFICATIONS:

Rated Conditions (Capacity / Input)*		
Cooling <sup>1</sup>	Btu/h / W	34,000 / 2,780
Heating at 47° F <sup>2</sup>	Btu/h / W	38,000 / 3,040
Heating at 17° F <sup>3</sup>	Btu/h / W	29,100 / 3,230

Capacity Range	Minimum	Maximum	
Cooling <sup>1</sup>	Btu/h	18,000	36,000
Heating at 47° F <sup>2</sup>	Btu/h	18,000	40,000
Heating at 17° F <sup>3</sup>	Btu/h	-	38,000
Heating at 5° F <sup>4</sup>	Btu/h	-	38,000

1. Cooling | Indoor: 80° F(27° C)DB / 67° F(19° C)WB; Outdoor: 95° F(35° C)DB / 75° F(24° C)WB\*
  2. Heating at 47° F | Indoor: 70° F(21° C)DB / 60° F(16° C)WB; Outdoor: 47° F(8° C)DB / 43° F(6° C)WB\*
  3. Heating at 17° F | Indoor: 70° F(21° C)DB / 60° F(16° C)WB; Outdoor: 17° F(-8° C)DB / 15° F(-9° C)WB\*
  4. Heating at 5° F | Indoor: 70° F(21° C)DB / 60° F(16° C)WB; Outdoor: 5° F(-15° C) DB / 5° F(-15° C)WB
- \* Rating Conditions per AHRI Standard

Operating Range	
Cooling	0° F** to 115° F (-18° C to 46° C) DB
Heating	-13° F to 70° F (-25° C to 21° C) DB

\*\* With optional wind baffle accessory installed. If not installed, the min. temp. will be 23° F (-5° C) DB.

AHRI Efficiency Ratings	
EER	12.2
SEER	17.8
HSPF	11.0
COP at 47° F	3.48
COP at 17° F	2.62

Electrical Power Requirements	208 / 230V, 1-Phase, 60 Hz
-------------------------------	----------------------------

Minimum Circuit Ampacity (MCA)		
Indoor / Outdoor	A	5.50 / 28

Indoor Unit		
Blower Motor (ECM)	F.L.A.	4.4
Blower Motor Output	W	430
External Static Pressure	In. WG	0.30 - 0.50 - 0.80
SHF / Moisture Removal		0.74 / 7.9 pt./h

Outdoor Unit		
Compressor		INVERTER
Fan Motor (ECM)	F.L.A.	0.4+0.4
MOCP	A	40

Airflow Rate			
Indoor (Lo-Mid-Hi)	Cooling	DRY: CFM	788-956-1125
	Heating		788-956-1125
Outdoor			3,530

Sound Pressure Level			
Indoor (Lo-Mid-Hi)	Cooling	dB(A)	32-36-40
	Heating		32-36-40
Outdoor	Cooling		52
	Heating		53

External Dimensions		
Indoor (H x W x D)	In.(mm)	59-1/2 x 25 x 21-5/8 (1,511 x 635 x 548)
Outdoor (H x W x D)		53-1/8 x 37-3/8 x 13 + 1-3/16 (1,350 x 950 x 330 + 30)

Net Weight		
Indoor	Lbs.(kg)	172 (78)
Outdoor		265 (120)

External Finish	
Indoor	High-gloss polyester powder coated
Outdoor	Munsell No. 3Y 7.8 / 1.1

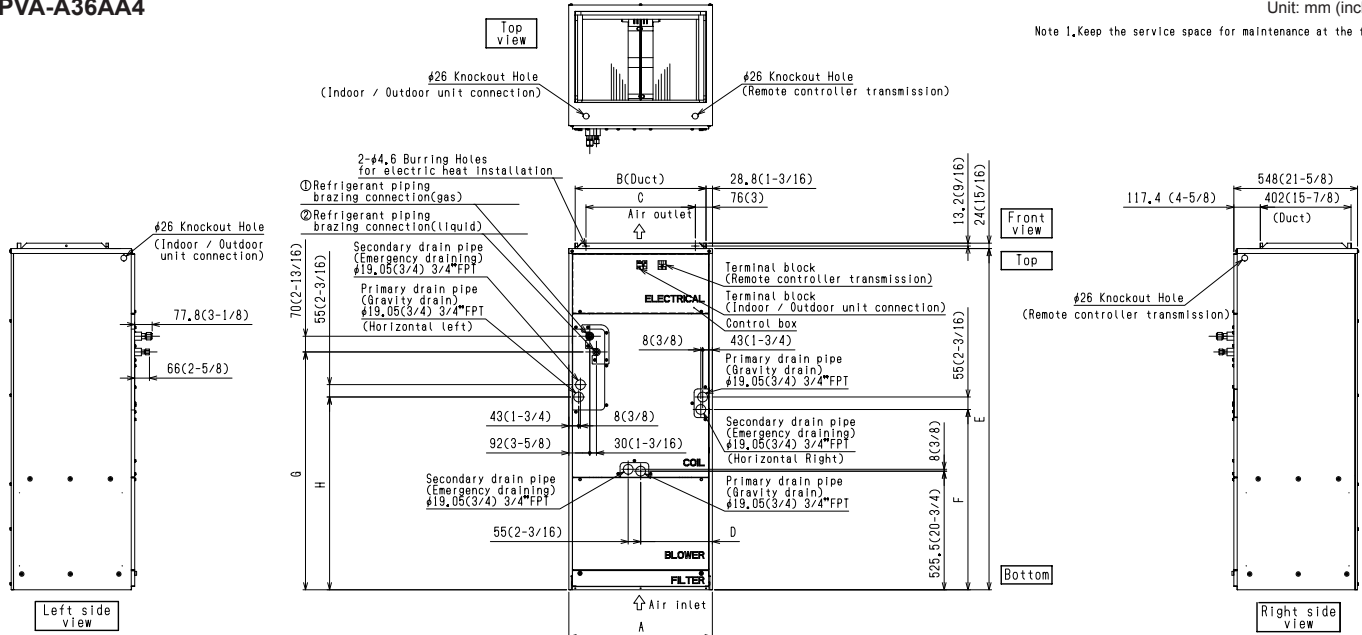
Refrigerant	R410A ; 12lbs.
-------------	----------------

Refrigerant Piping (Flared)		
Liquid (High Pressure)	In.(mm)	5/8 (15.88)
Gas (Low Pressure)		3/8 (9.52)
Maximum Total Refrigerant Pipe Length	Ft. (m)	245 (75)
Maximum Vertical Separation	Ft. (m)	100 (30)

# DIMENSIONS: PVA-A36AA4 & PUZ-HA36NHA4

## PVA-A36AA4

Unit: mm (inch)  
Note 1. Keep the service space for maintenance at the front.

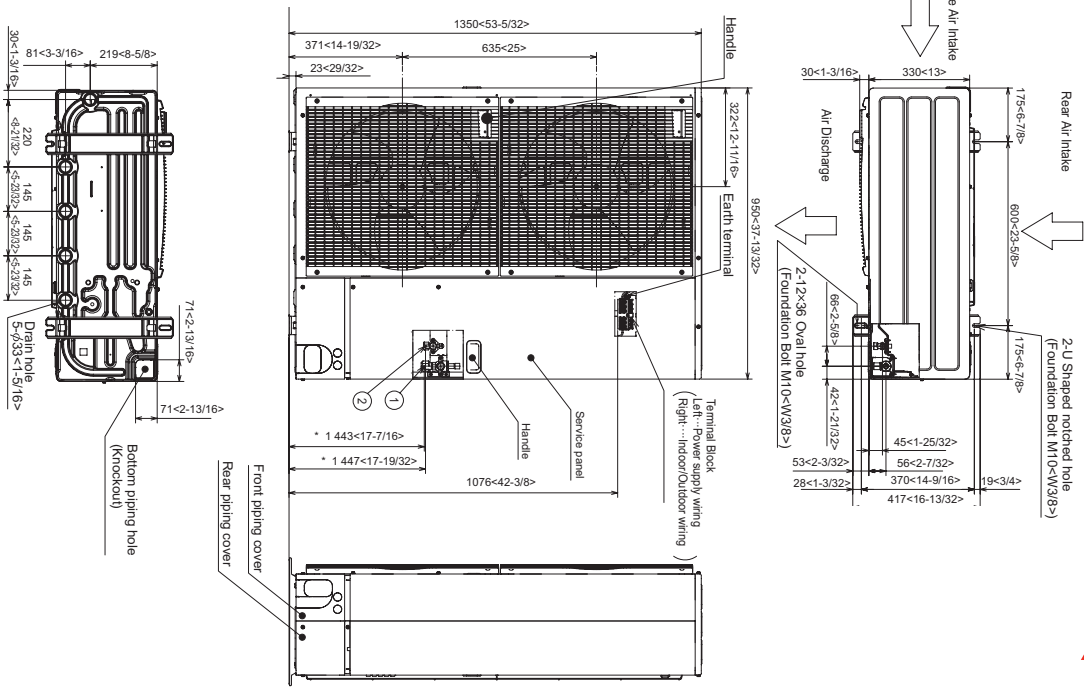


Model	A	B	C	D	E	F	G	H	J	Øgas pipe	ØLiquid pipe
PVA-A30AA4	534 (21)	477 (18-13/16)	382,6 (15-1/8)	266,5 (10-1/2)	1378 (54-1/4)	737 (29-1/16)	953,5 (37-9/16)	792 (31-3/16)	461 (18-3/16)	Ø15,88 (5/8)	Ø9,52 (3/8)
PVA-A36AA4	635 (25)	579 (22-13/16)	484,6 (19-1/8)	317,5 (12-1/2)	1511 (59-1/2)	798,5 (31-7/16)	1053 (41-1/2)	853,5 (33-5/8)	563 (22-3/16)		
PVA-A42AA4											

Model	ØNominal Filter size	Duct Connection
PVA-A30AA4	508X508X25,4 (20X20X1)	477X402 (18-13/16X15-7/8)
PVA-A36AA4	508X609,6X25,4 (20X24X1)	579X402 (22-13/16X15-7/8)
PVA-A42AA4		

## PUZ-HA36NHA4

Unit: mm (inch)



COOLING & HEATING

1340 Satellite Boulevard, Suwanee, GA 30024  
Toll Free: 800-433-4822 www.mehvac.com

