

**SUBMITTAL DATA: PLA-A30BA4 & PUZ-HA30NHA4**
**30,000 BTU/H CEILING-CASSETTE HYPER HEAT-PUMP SYSTEM**

Job Name:

System Reference:

Date:



Indoor Unit: PLA-A30BA4



Outdoor Unit: PUZ-HA30NHA4



**GENERAL FEATURES**

- High heating capacity at low outside temperatures
- Exhibits 100% of rated heating capacity at 5° F; 90% of rated heating capacity at -4° F
- Built-in drain lift mechanism for condensate removal; lifts up to 33-7/16 inches
- Wide air flow pattern for better air distribution; independently adjustable vanes
- Auto wave airflow in heating mode—unit independently cycles through horizontal and vertical positions for a more even heat distribution
- Self-check function—integrated diagnostics
- Limited warranty: five years parts and seven years compressors

**ACCESSORIES**
**Indoor Unit**

- Multi-function Casement (PAC-SH53TM-E)
- Air Outlet Shutter Plates (PAC-SH51SP-E)
- High-efficiency [MERV 10] Filter (PAC-SH59KF; req. PAC-SH53TM)

**Outdoor Unit**

- M-NET Adapter (PAC-SF80MA-E)
- Wind Baffle (One Piece)\* (WB-PA2)
- Air Outlet Guide (One Piece)\* (PAC-SG59SG)

\*PUY(Z) requires two outlet guides or wind baffles for installation.

**Controller Options**

- Wireless Wall-mounted Remote Controller Kit (MHK1)\*\*
- Portable Central Controller (MCCH1)\*\*
- Outdoor Air Sensor (MOS1)\*\*
- Wired Wall-mounted Controller (PAR-31MAA)\*\*
- Simple MA Remote Controller (PAC-YT53CRAU)\*\*

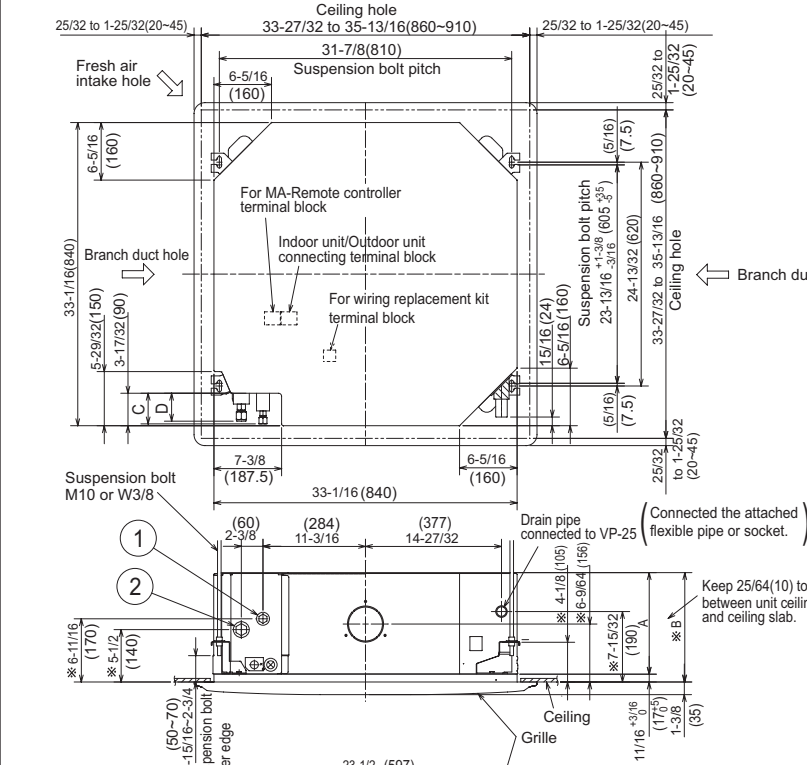
\*\*See Submittal for information on each option.

- M-NET Adapter (PAC-SF81MA)
- i-see Sensor Corner Panel (PAC-SA1ME-E)
- Hand-held Wireless Remote Controller (PAR-FL32MA; req. PAR-FA32MA-E)
- Wireless Signal Receiver Module (PAR-FA32MA-E)

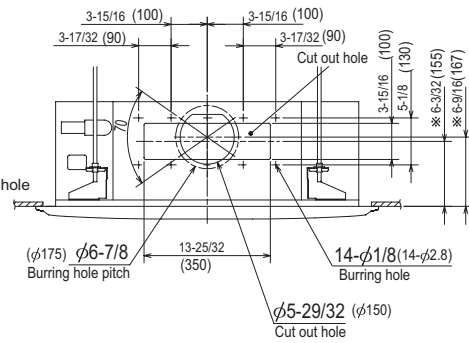


# DIMENSIONS: PLA-A30BA4

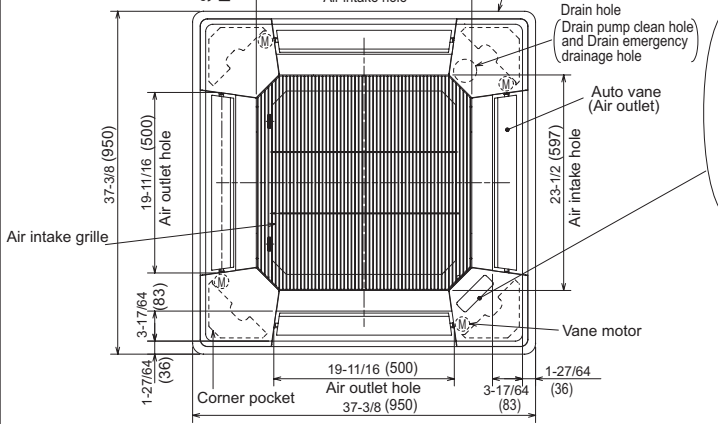
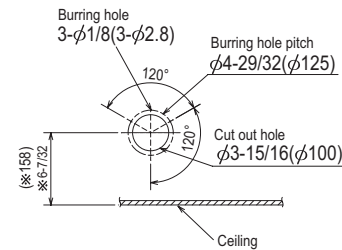
Unit : inch(mm)



### Detail connecting of Branch duct(Both aspects)



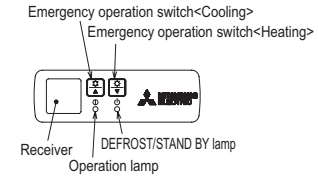
### Detail drawing of fresh air intake hole



In case of standard grille

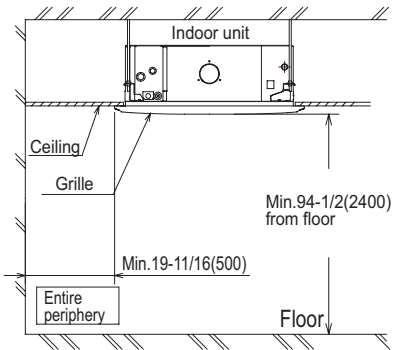


In case of IR wireless remote controller



Models	①	②	A	B	C	D
PLA-A12BA4 PLA-A18BA4	Refrigerant pipe ... $\phi 6.35$ Flared connection ...1/4 inch	Refrigerant pipe ... $\phi 12.7$ Flared connection ...1/2 inch	9-1/2 (241)	10-3/16 (258)	3-5/32 (80)	2-29/32 (74)
PLA-A24BA4 PLA-A30BA4	Refrigerant pipe ... $\phi 9.52$ Flared connection ...3/8 inch	Refrigerant pipe ... $\phi 15.88$ Flared connection ...5/8 inch	11-1/16 (281)	11-3/4 (298)	3-11/32 (85)	3-1/32 (77)

- Note1.** As for drain pipe, please use VP-25(O.D.  $\phi 1-1/4$ ( $\phi 32$ ) PVC TUBE). Drain pump is included.  
 Max. lifting height is 70-7/18(850mm) from the ceiling.
- As for suspension bolt, please use M10 or W3/8.(Procured at local site)
  - Electrical box may be removed for the service purpose.  
 Make sure to slack the electrical wire little bit for control/power wires connection.
  - The height of the indoor unit is able to be adjusted with the grille attached.
  - For the installation of the optional high efficiency filter or optional multi-functional casement.
    - Add 5-5/16(135mm) to the dimensions \* marked on the figure.
    - The optional high efficiency filter must be used jointly with the multi-functional casement.
  - When installing the branch ducts, be sure to insulate adequately.  
 Otherwise condensation and dripping may occur.  
 (It becomes the cause of dew drops/water dew.)
  - As for necessary installation/service space, please refer to the left figure.



# DIMENSIONS: PUZ-HA30NHA4

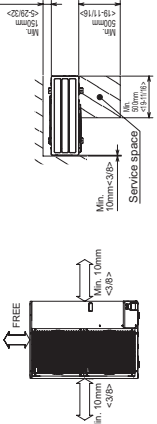
Unit : mm<inch>

### 3 FOUNDATION BOLTS | 4 PIPING-WIRING DIRECTIONS

Please secure the unit firmly with 4 foundation bolts (M10- $\phi$ 3/8") bolts. Bolts and washers must be purchased locally.

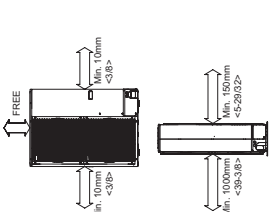
### 2 SERVICE SPACE

Dimensions of space needed for service access are shown in the below diagram.



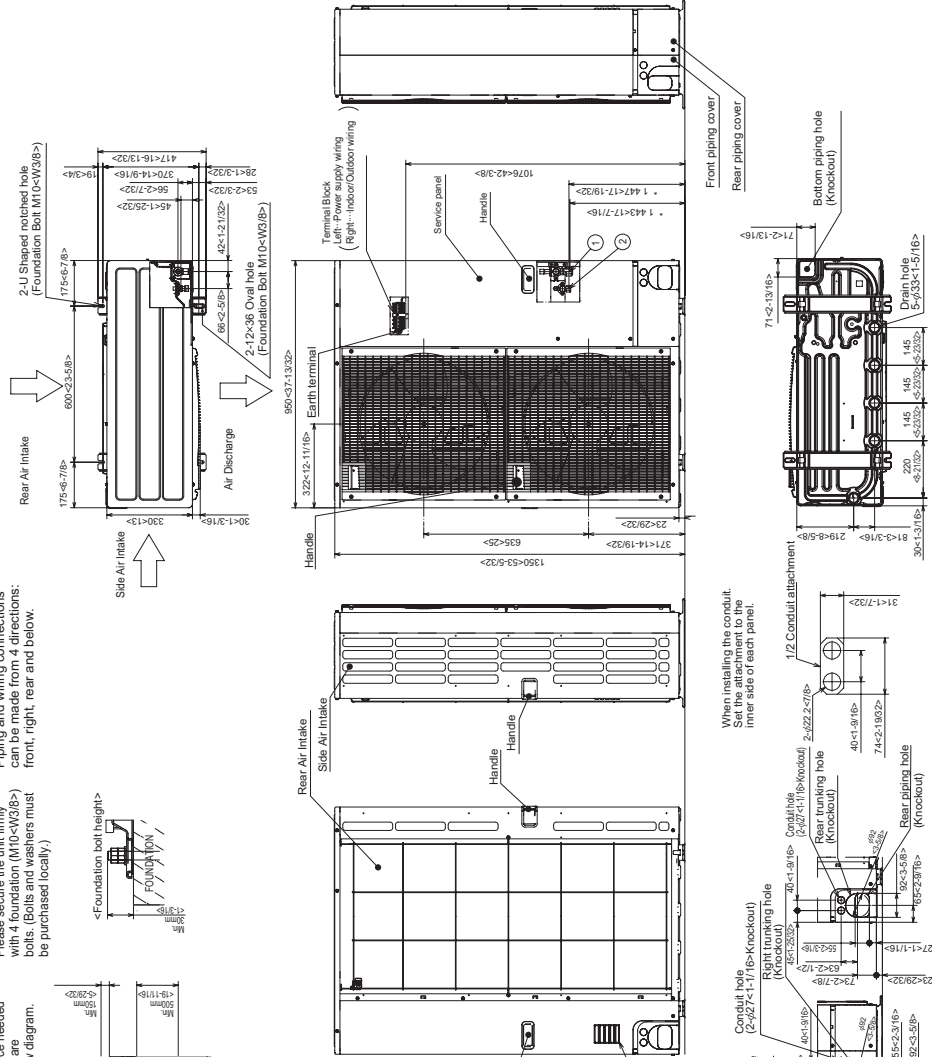
### 1 FREE SPACE (Around the unit)

The diagram below shows a basic example. Explanation of particular details are given in the installation manuals etc.

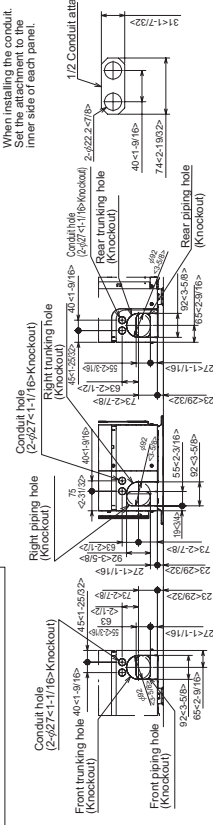


### Example of Notes

- ①... Refrigerant GAS pipe connection (FLARE)  $\phi$ 15.88- $\phi$ 5.8"
- ②... Refrigerant LIQUID pipe connection (FLARE)  $\phi$ 9.52- $\phi$ 3.8"
- \*1 ... Indication of STOP VALVE connection location.



### Piping Knockout Hole Details



COOLING & HEATING

1340 Satellite Boulevard  
Suwanee, GA 30024  
Toll Free: 800-433-4822  
www.mehvac.com