

## SUBMITTAL DATA: PKA-A30KA4 & PUZ-A30NHA4 (-BS)

30,000 BTU/H WALL-MOUNTED HEAT-PUMP SYSTEM

Job Name:	Location:	Date:
Purchaser:	Engineer:	
Submitted to:	For <input type="checkbox"/> Reference <input type="checkbox"/> Approval <input type="checkbox"/> Construction	
System Designation:	Schedule No.:	



Indoor Unit: PKA-A30KA4



Outdoor Unit: PUZ-A30NHA4 (-BS)

### GENERAL FEATURES

- Wall-mounted indoor unit for residential and commercial applications
- Shiny-white—exterior plastic; compact design
- Quiet operation—both indoor and outdoor units
- Self-check function—integrated diagnostics
- Limited warranty: five years parts and seven years compressors

### UNIT OPTION

- Standard Model.....PUZ-A30NHA4
- Sea Coast (BS) Model.....PUZ-A30NHA4-BS

### OPTIONAL ACCESSORIES

#### Indoor Unit

- Mini Condensate Pump (SI1730-230, 230V)
- L-Connector Pipe (PAC-SC84PI; for left side unit piping installation)

#### Outdoor Unit

- Drain Pan (PAC-SG63DP)
- Drain Socket (PAC-SG61DS)
- Three-pole Disconnect Switch (TAZ-MS303)
- Wind Baffle (WB-PA2)
- Air Outlet Guide (PAC-SG59SG)
- Mounting Base (DSD-400N)
- Mounting Pad (ULTRILITE2)
- Wall-mounting Brackets (CWMB1)

#### Controller Options

- Wireless Wall-mounted Remote Controller Kit (MHK1)\*
  - Portable Controller (MCCH1)\*
  - Outdoor Air Sensor (MOS1)\*
- \*See Submittal for information on each option.
- Wired Wall-mounted Controller (PAR-21MAAU)
  - M-NET Adapter (PAC-SF81MA)
  - CN51 Connector for Multiple Remote Controller Adapters/Duct Fan Controller (PAC-725AD)
  - CN32 Connector for Remote On/Off (PAC-715AD)
  - Remote Temperature Sensor (PAC-SE41TS)
  - Remote Operation Adapter - Display and On/Off (PAC-SF40RM)
  - Hand-held Wireless Remote Controller (PAR-FL32MA; req. PAR-FA32MA-E)
  - Wireless Signal Receiver Module (PAR-FA32MA-E)
  - Lockdown Bracket for Hand-held Controller (RCMKP1CB)
  - Control/Service Tool (PAC-SK52ST)

### SEACOAST PROTECTION

- External Outer Panel: Phosphate coating + Acrylic-Enamel coating
- Fan Motor Support: Epoxy resin coating (at edge face)
- Separator Assembly ; Valve Bed: Epoxy resin coating (at edge face)
- Screws (used outer side): Zinc nickel coating 5µm + Polyvinylidene chloride coating

**"Blue Fin" treatment is an anti-corrosion treatment that is applied to the condenser coil to protect it against airborne contaminants..**



# SPECIFICATIONS : PKA-A30KA4 & PUZ-A30NHA4 (BS)

### Cooling\*

Rated Capacity . . . . . 30,000 Btu/h  
 Minimum Capacity . . . . . 12,000 Btu/h  
 SEER . . . . . 15.5 Btu/h/W  
 EER . . . . . 7.3 Btu/h/W  
 Total Input . . . . . 4,130 W

### Heating at 47°F\*

Rated Capacity . . . . . 32,000 Btu/h  
 Minimum Capacity . . . . . 12,000 Btu/h  
 HSPF (IV) . . . . . 8.9 Btu/h/W  
 COP . . . . . 2.98  
 Total Input . . . . . 3,150 W

### Heating at 17°F\*

Rated Capacity . . . . . 23,000 Btu/h  
 Total Input . . . . . 2,850 W  
 COP . . . . . 2.37

### \* Rating Conditions per AHRI Standard

Cooling | Indoor: 80° F (27° C) DB / 67° F (19° C) WB  
 Cooling | Outdoor: 95° F (35° C) DB / 75° F (24° C) WB  
 Heating at 47° F | Indoor: 70° F (21° C) DB / 60° F (16° C) WB  
 Heating at 47° F | Outdoor: 47° F (8° C) DB / 43° F (6° C) WB  
 Heating at 17° F | Indoor: 70° F (21° C) DB / 60° F (16° C) WB  
 Heating at 17° F | Outdoor: 17° F (-8° C) DB / 15° F (-9° C) WB

### Electrical Requirements

Power Supply . . . . . 208 / 230V, 1-Phase, 60 Hz  
 Recommended Fuse/Breaker Size . . . . . 30 A

### Voltage

Indoor - Outdoor S1-S2 . . . . . AC 208 / 230V  
 Indoor - Outdoor S2-S3 . . . . . DC ±24V

### OPERATING CONDITIONS

		Indoor Intake Air Temp.	Outdoor Intake Air Temp.
Cooling	Maximum	95° F (35° C) DB 71° F (22° C) WB	115° F (46° C) DB
	Minimum	67° F (19° C) DB 57° F (14° C) WB	0° F** (-18° C) DB
Heating	Maximum	80° F (27° C) DB 67° F (19° C) WB	70° F (21° C) DB 59° F (15° C) WB
	Minimum	70° F (21° C) DB 60° F (16° C) WB	12° F (-11° C) DB 10° F (-12° C) WB

\*\* With optional wind baffle accessory installed. If not installed, the minimum temperature will be 23° F (-5° C) DB.

### Indoor Unit

MCA . . . . . 1 A  
 Blower Motor (ECM) . . . . . 0.36 F.L.A.  
 Blower Motor Output . . . . . 56 W  
 Airflow (Lo - Mid - Hi) . . . . . 635 - 705 - 775 Dry CFM  
 570 - 635 - 700 Wet CFM  
 Air Filter . . . . . Polypropylene Honeycomb  
 Sound Pressure Level (Lo - Mid - Hi) . . . . . 39 - 42 - 45 dB(A)  
 SHF . . . . . 0.70  
 Moisture Removal . . . . . 8.1 pt./h

DIMENSIONS	UNIT INCHES / MM
W	46-1/16 / 1,170
D	11-5/8 / 295
H	14-3/8 / 365

Weight . . . . . 46 lbs. / 21 kg  
 External Finish . . . . . Munsell No. 1.0Y 9.2 / 0.2  
 Field Drainpipe Size O.D. . . . . 5/8" / 16 mm

### Outdoor Unit

Compressor . . . . . DC Inverter-driven Twin Rotary  
 MCA . . . . . 25 A  
 MOCp . . . . . 40 A  
 Fan Motor (ECM) . . . . . 0.75 F.L.A.  
 Sound Pressure Level  
 Cooling . . . . . 48 dB(A)  
 Heating . . . . . 50 dB(A)

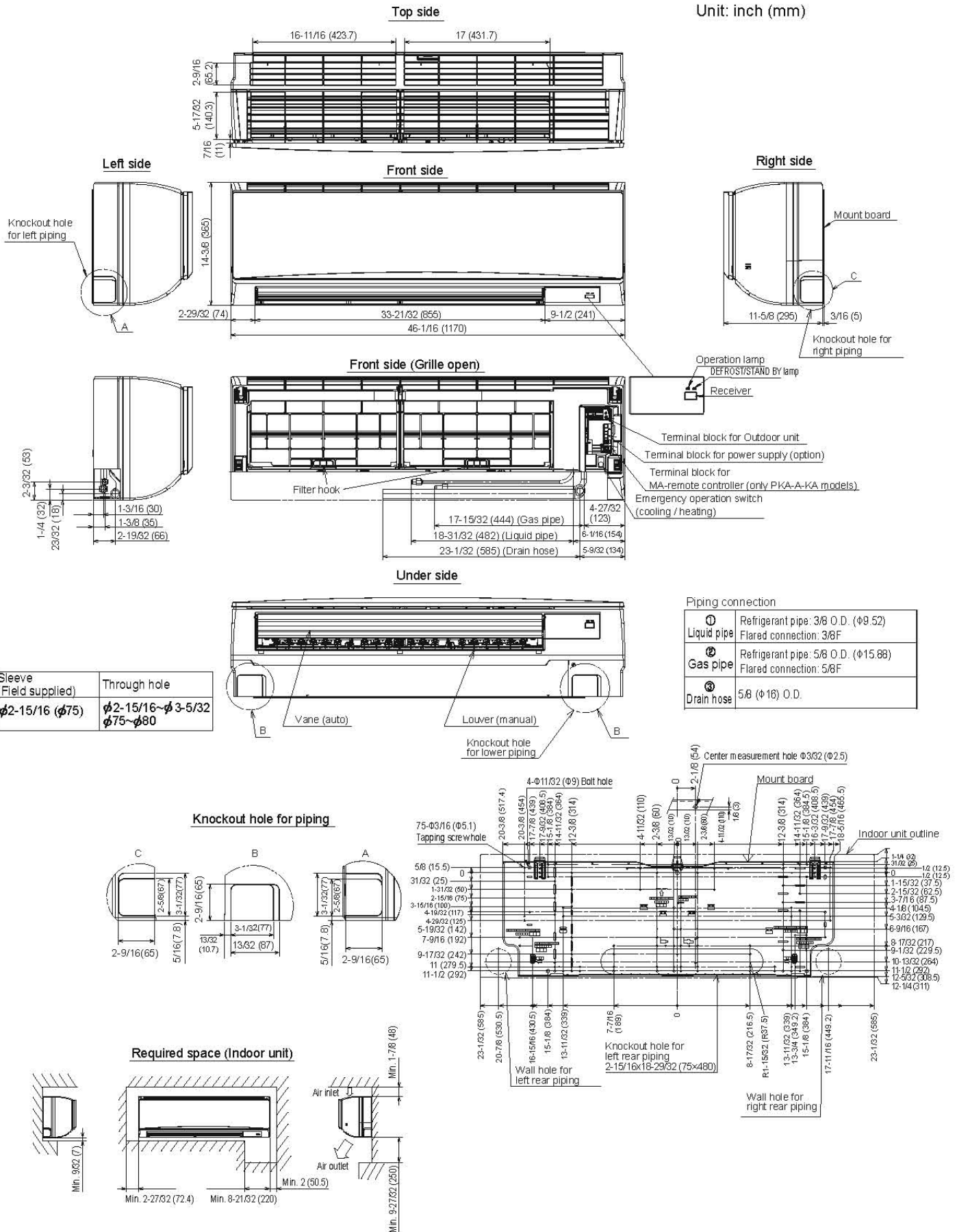
DIMENSIONS	INCHES / MM
W	37-3/8 / 950
D	13 + 1-3/16 / 330 + 30
H	37-1/8 / 943

Weight . . . . . 165 lbs. / 75 kg  
 External Finish . . . . . Munsell No. 3Y 7.8 / 1.1  
 Refrigerant Type . . . . . R410A  
 Refrigerant Pipe Size O.D.  
 Gas Side . . . . . 5/8" / 15.88 mm  
 Liquid Side . . . . . 3/8" / 9.52 mm  
 Max. Refrigerant Pipe Length . . . . . 165' / 50 m  
 Max. Refrigerant Pipe Height Difference . . . . . 100' / 30 m  
 Connection Method . . . . . Flared

Notes:

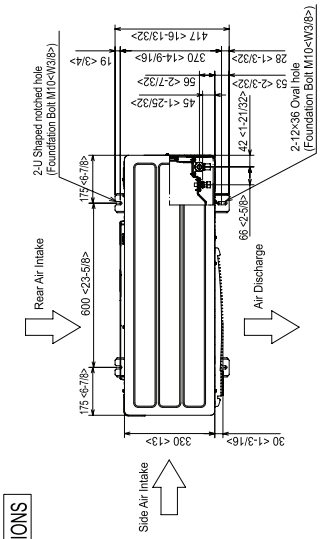
# DIMENSIONS: PKA-A30KA4

Unit: inch (mm)



# DIMENSIONS: PUZ-A30NHA4 (-BS)

Unit: mm (inch)



### 4 PIPING-WIRING DIRECTIONS

Piping and wiring connections can be made from 4 directions: front, right, rear and below.

### 3 FOUNDATION BOLTS

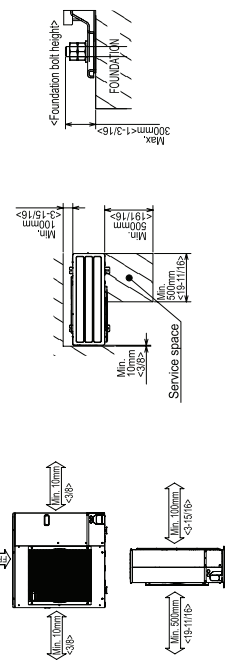
Please secure the unit firmly with foundation bolts (M10 <math>\times</math> 1/2) in 4 directions. (Bolts and washers must be purchased locally).

### 2 SERVICE SPACE

Dimensions of space needed for service access are shown in the below diagram.

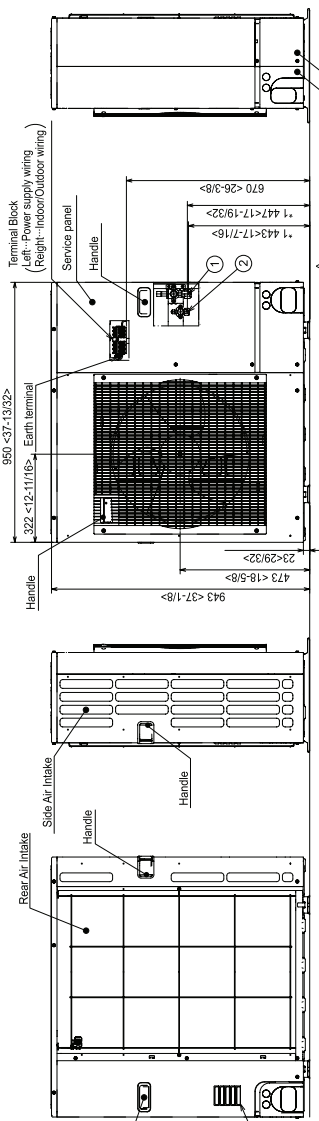
### 1 Clearance Area (Around unit)

The diagram below shows a basic example. Expansion of particular details are given in the installation manuals etc.

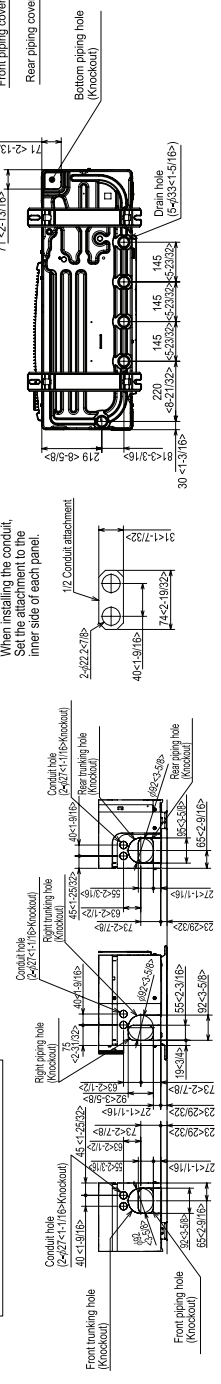


### Example of Notes

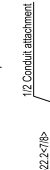
- ① ...Refrigerant GAS pipe connection (FLARE) (1/5.88 <math>\times</math> 5/8 <math>\times</math> 3/8 <math>\times</math> 3/8)
- ② ...Refrigerant LIQUID pipe connection (FLARE) (1/5.88 <math>\times</math> 5/8 <math>\times</math> 3/8 <math>\times</math> 3/8)
- \* 1 ...Indication of STOP VALVE connection location.



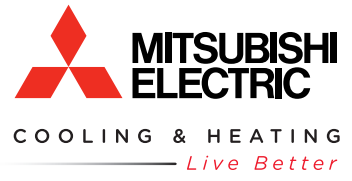
### Piping Knockout Hole Details



When installing the conduit, set the attachment to the inner side of each panel.



Intertek



3400 Lawrenceville Suwanee Rd  
Suwanee, GA 30024  
Tele: 678-376-2900 • Fax: 800-889-9904  
Toll Free: 800-433-4822  
www.mehvac.com