

Job Name: _____ Location: _____

Drawing Reference: _____ Schedule No. _____

System No.: _____ Date: _____



GENERAL FEATURES

- R410A or R22 refrigerant-compatible
- Lightweight, low-profile compact design
- Customizable wide airflow pattern enables better air distribution—direction of each vane can be adjusted to fit room layout through Deluxe MA or ME controllers
- Auto wave airflow in heating mode—unit independently cycles through horizontal and vertical positions for more even heat distribution
- Four-speed fan settings and auto fan speed adjustment mode
- Corner-pocket design for simplified installation
- Built-in condensate lift mechanism; lifts to 33-1/2 in.
- Outside air capability
- Multiple sizes up to 36,000 Btu/h
- i-see sensor option uses infrared rays to search for hot and cold spots

SPECIFICATIONS

Capacity*

Cooling.....36,000 Btu/h
 Heating.....40,000 Btu/h

Power

Power Source.....208 / 230V, 1-phase, 60Hz
 Power Consumption
 Cooling.....0.16 kW
 Heating.....0.15 kW
 Current
 Cooling.....1.07 A
 Heating.....1.00 A
 Minimum Circuit Ampacity (MCA).....1.34 A
 Maximum Overcurrent Protection (MOCP) Fuse.....15 A

External Finish...Grille (White; Munsell No. 6.4Y 8.9 / 0.4)

External Dimensions

Inches.....11-3/4 h x 33-1/8 w x 33-1/8 d
 mm.....298 h x 840 w x 840 d

Grille (PLP-40BAU):

Inches.....1-3/8 h x 37-7/16 w x 37-7/16 d
 mm.....35 h x 950 w x 950 d

Net Weight

Unit.....60 lbs. / 27 kg
 Grille.....13 lbs. / 6 kg

Coil Type.....Cross Fin
 (Aluminum Plate Fin and Copper Tube)

Fan

Type x Quantity.....Turbo Fan x 1
 Airflow Rate
 (Low - Mid 1 - Mid 2 - High).....777 - 883 - 989 - 1059 cfm
 Motor
 Type.....DC Motor
 Output.....0.120 kW

Standard Air Filter.....Polypropylene Honeycomb

Refrigerant Piping Dimensions

R410A
 Liquid (High Pressure).....3/8" / 9.52 mm Flare
 Gas (Low Pressure).....5/8" / 15.88 mm Flare
 R22
 Liquid (High Pressure).....3/8" / 9.52 mm Flare
 Gas (Low Pressure).....3/4" / 19.05 mm Flare

Drainpipe Dimension.....O.D. 1-1/4" / 32 mm

Sound Pressure Level

(Low - Mid 1 - Mid 2 - High).....35 - 38 - 41 - 43 dB(A)

Options

- Air Outlet Shutter Plate (2 pieces).....PAC-SH51SP-E
- High-Efficiency Filter (MERV 10).....PAC-SH59KF-E
- Multi-function Casement.....PAC-SH53TM-E
- i-see Sensor Corner Panel.....PAC-SA1ME-E
- Wireless Signal Receiver.....PAR-SA9FA-E

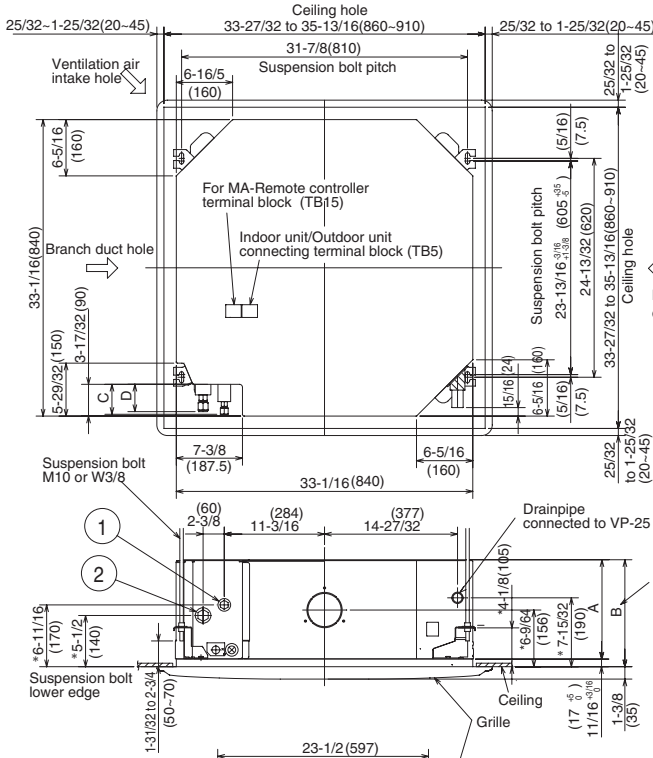
* Cooling / Heating capacity indicated at the maximum value at operation under the following conditions:

Cooling: Indoor 80°F (27°C) DB / 67°F (19°C) WB, Outdoor 95°F (35°C) DB
 Heating: Indoor 70°F (21°C) DB, Outdoor 47°F (8°C) DB / 43°F (6°C) WB

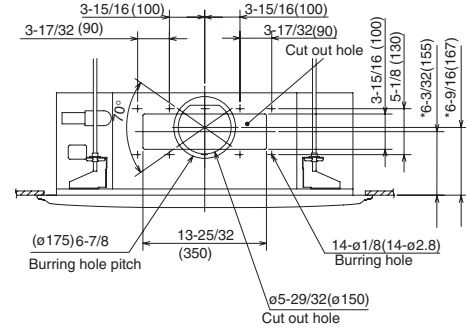
Note: Ventilation air: Providing sufficient ventilation air is an important part of every building design. ASHRAE Standard 62 provides the minimum ventilation air requirement. Also, check local codes.

Model: PLFY-P36NBMU-E – DIMENSIONS

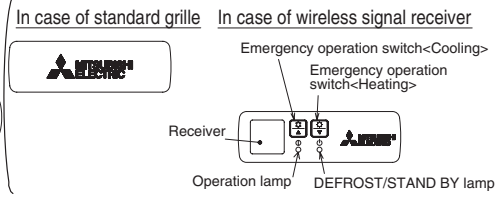
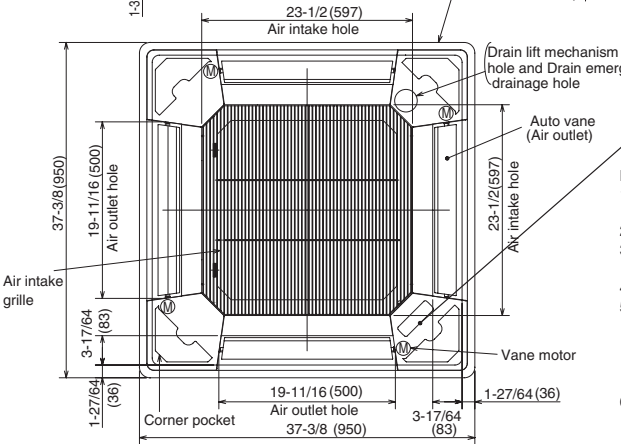
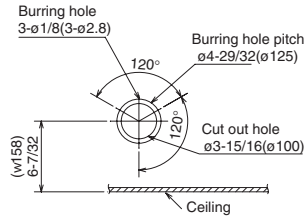
Unit : inch(mm)



Detail connecting of branch duct

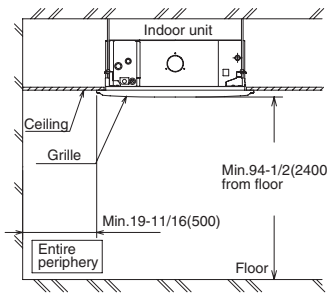


Detail drawing of ventilation air intake hole



Note:

- As for drainpipe, please use O.D. 1-1/4(32) PVC TUBE. Drain lift mechanism is included.
- As for suspension bolt, please use M10 or 3/8. (Procured at local site)
- Electrical box may be removed for the service purpose. Make sure to slack the electrical wire little bit for control/power wires connection.
- The height of the indoor unit is able to be adjusted with the grille attached.
- For the installation of the optional high efficiency filter or optional multi-functional casement.
 - Add 5-5/16"(135mm) to the dimensions marked with an * on the figures.
 - The optional high efficiency filter becomes optional multi-functional casement and concomitant use.
- When installing the branch ducts, be sure to insulate adequately. Otherwise condensation and dripping may occur. As for necessary installation / service space, please refer to the bottom, left figure.

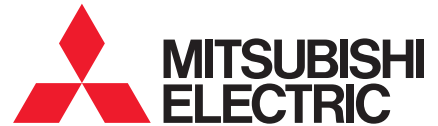


Models	1	2	A	B	C	D
PLFY-P12NBMU-E PLFY-P15NBMU-E	Refrigerant pipe --ø6.35 Flared connection ...1/4"	Refrigerant pipe --ø12.7 Flared connection ...1/2"				
PLFY-P18NBMU-E	Refrigerant pipe ø6.35 / ø9.52 Flared connection 1/4" / 3/8" (compatible)	Refrigerant pipe ø12.7 / ø15.88 Flared connection 1/2" / 5/8" (compatible)	9-1/2 (241)	10-3/16 (258)	3-5/32 (80)	2-29/32 (74)
PLFY-P24NBMU-E PLFY-P30NBMU-E PLFY-P36NBMU-E	Refrigerant pipe --ø9.52 Flared connection --3/8"	Refrigerant pipe --ø15.88 Flared connection --5/8"				
		Refrigerant pipe ø15.88 / ø19.05 Flared connection 5/8" / 3/4" (compatible)	11-1/16 (281)	11-3/4 (298)	3-11/32 (85)	3-1/32 (77)



Mitsubishi Electric Air Conditioning & Refrigeration Systems Works acquired ISO 9001 certification under Series 9000 of the International Standard Organization (ISO) based on a review of quality warranties for the production of refrigeration and air conditioning equipment.

ISO Authorization System
The ISO 9000 series is a plant authorization system relating to quality warranties as stipulated by the ISO. ISO 9001 certifies quality warranties based on the "design, development, production, installation and auxiliary services" for products built at an authorized plant.



HVAC Advanced Products Division
Mitsubishi Electric & Electronics USA, Inc.
3400 Lawrenceville Suwanee Rd.
Suwanee, GA 30024
Tele: 678-376-2900 • Fax: 800-889-9904
Toll Free: 800-433-4822 (#4)
www.mehvac.com
Specifications are subject to change without notice.



Mitsubishi Electric Air Conditioning & Refrigeration Systems Works acquired environmental management system standard ISO 14001 certification.

The ISO 14000 series is a set of standards applying to environmental protection set by the International Standard Organization (ISO).

Certificate Number EC97J1227