

SUBMITTAL DATA: PLA-A30BA4 & PUZ-HA30NHA2 30,000 BTU/H CEILING-CASSETTE HYPER HEAT-PUMP SYSTEM

Job Name:	Location:	Date:
Purchaser:	Engineer:	
Submitted to:	For <input type="checkbox"/> Reference <input type="checkbox"/> Approval <input type="checkbox"/> Construction	
System Designation:	Schedule No.:	

GENERAL FEATURES

- Innovative flash technology enables high heating capacity at lower outside temperatures
- Exhibits 100% of rated heating capacity at 5°F; 90% of rated heating capacity at -4°F
- Built-in drain lift mechanism for condensate removal; lifts up to 33-7/16 in.
- Wide air flow pattern for better air distribution; independently adjustable vanes
- Auto wave airflow in heating mode—unit independently cycles through horizontal and vertical positions for a more even heat distribution
- Self-check function—integrated diagnostics
- Limited warranty: five years on parts and defects and seven years on compressors

OPTIONAL ACCESSORIES
Indoor Unit

- Multi-function Casement (PAC-SH53TM-E)
- Air Outlet Shutter Plates (PAC-SH51SP-E)
- High-efficiency (MERV 10) Filter (PAC-SH59KF-E)

Outdoor Unit

- M-NET Adapter (PAC-SF80MA-E)
- Air Outlet Guide (PAC-SG59SG-E; two pieces are required)
- Wind Baffle (WB-PA2; two pieces are required)

Controller Options

- Wall-mounted Wired Remote Controller (PAR-21MAA)
- i-see Sensor Corner Panel (PAC-SA1ME-E)
- Hand-held Wireless Remote Controller (PAR-FL32MA; req. PAR-SA9FA-E)
- Wireless Signal Receiver Module (PAR-SA9FA-E)

Cooling*

Rated Capacity 30,000 Btu/h
 Minimum Capacity 18,000 Btu/h
 SEER 15.6 Btu/h/W
 Total Input 2,450 W

Heating at 47°F*

Rated Capacity 32,000 Btu/h
 Minimum Capacity 18,000 Btu/h
 HSPF (IV) 9.4 Btu/h/W
 Total Input 3,440 W

Heating at 17°F*

Rated Capacity 19,000 Btu/h
 Rated Total Input 2,710 W
 Maximum Capacity 32,000 Btu/h
 Maximum Total Input 5,720 W

* Rating Conditions (Cooling) - Indoor: 80°F (27°C) DB / 67°F (19°C) WB. Outdoor: 95°F (35°C) DB / 75°F (24°C) WB.

(Heating) - Indoor: 70°F (21°C) DB / 60°F (16°C) WB. Outdoor: 47°F (8°C) DB / 43°F (6°C) WB.

(Heating) - Indoor: 70°F (21°C) DB / 60°F (16°C) WB. Outdoor: 17°F (-8°C) DB / 15°F (-9°C) WB.

Heating at 5°F

Maximum Capacity 32,000 Btu/h
 Maximum Input 6,630 W

Electrical Requirements

Power Supply 208 / 230V, 1-Phase, 60 Hz
 Breaker Size 30 A

Voltage

Indoor - Outdoor S1-S2 AC 208 / 230V
 Indoor - Outdoor S2-S3 DC 24V
 Indoor - Remote Controller DC 12V



Indoor Unit: PLA-A30BA4



Outdoor Unit: PUZ-HA30NHA2

OPERATING RANGE

		Indoor Intake Air Temp.	Outdoor Intake Air Temp.
Cooling	Maximum	90°F (32°C) DB, 73°F (23°C) WB	115°F (46°C) DB
	Minimum	66°F (19°C) DB, 59°F (15°C) WB	0°F** (-18°C) DB
Heating	Maximum	83°F (28°C) DB	70°F (21°C) DB, 59°F (15°C) WB
	Minimum	63°F (17°C) DB	-13°F (-25°C) DB, -13°F (-25°C) WB

** With optional wind baffle accessory installed. If not installed, the minimum temperature will be 23°F (-5°C) DB.

Indoor Unit

MCA 1 A
 Fan Motor 0.51 F.L.A.
 Fan Motor Output 50 W
 Airflow (Lo - M1 - M2 - Hi) 490 - 570 - 640 - 740 Dry CFM
 460 - 530 - 600 - 710 Wet CFM
 Sound Pressure Level (Lo - M1 - M2 - Hi) . . 28 - 30 - 32 - 34 dB(A)

DIMENSIONS	UNIT INCHES / MM	PANEL INCHES / MM
W	33-1/16 / 840	37-3/8 / 950
D	33-1/16 / 840	37-3/8 / 950
H	10-3/16 / 258	1-3/8 / 35

Weight (Unit/Grille)

lbs. 51 / 13
 kg 23 / 6
 External Finish Munsell No. 6.4 8.9 / 0.4
 Field Drainpipe Size O.D. 1-1/4" / 32 mm

Outdoor Unit

Compressor DC Inverter-driven Scroll
 MCA 28
 Fan Motor 0.4 + 0.4 F.L.A.
 Sound Pressure Level
 Cooling 52 dB(A)
 Heating 53 dB(A)

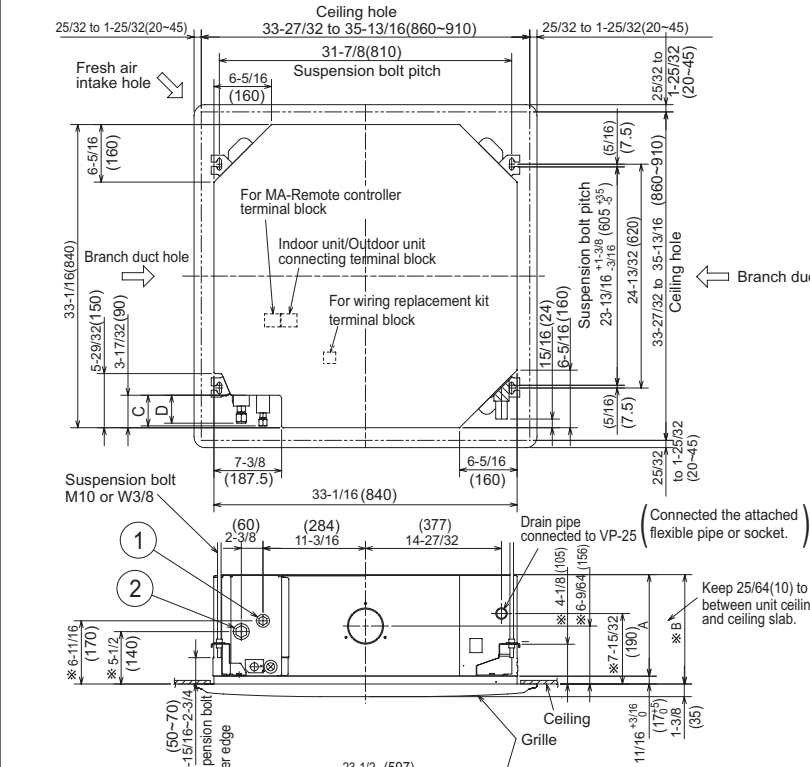
DIMENSIONS	INCHES / MM
W	37-3/8 / 950
D	13 + 1-3/16 / 330 + 30
H	53-1/8 / 1,350

Weight 265 lbs. / 120 kg
 External Finish Munsell No. 3Y 7.8 / 1.1
 Refrigerant Type R410A
 Refrigerant Pipe Size O.D.
 Gas Side 5/8" / 15.88 mm
 Liquid Side 3/8" / 9.52 mm
 Max. Refrigerant Pipe Length 245' / 75 m
 Max. Refrigerant Pipe Height Difference 100' / 30 m
 Connection Method Flared

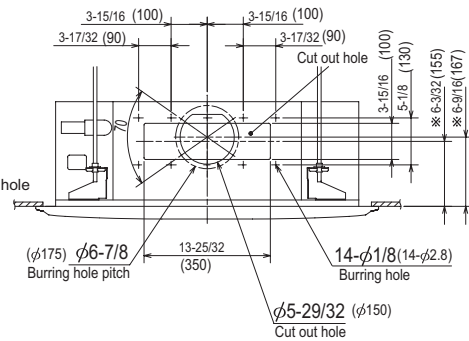


DIMENSIONS: PLA-A30BA4

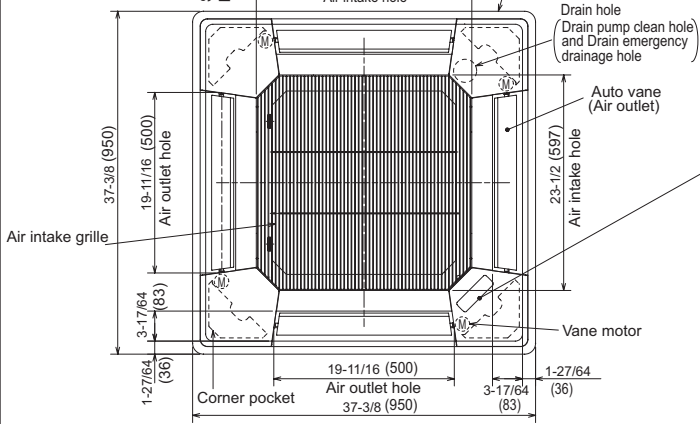
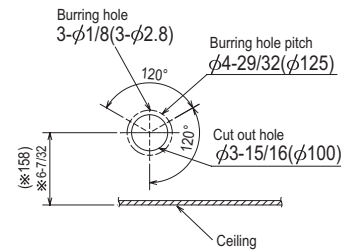
Unit : inch(mm)



Detail connecting of Branch duct(Both aspects)



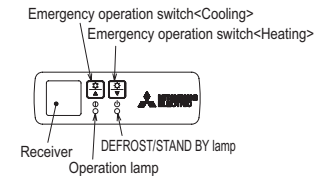
Detail drawing of fresh air intake hole



In case of standard grille

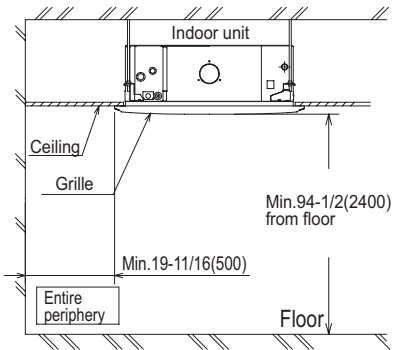


In case of IR wireless remote controller

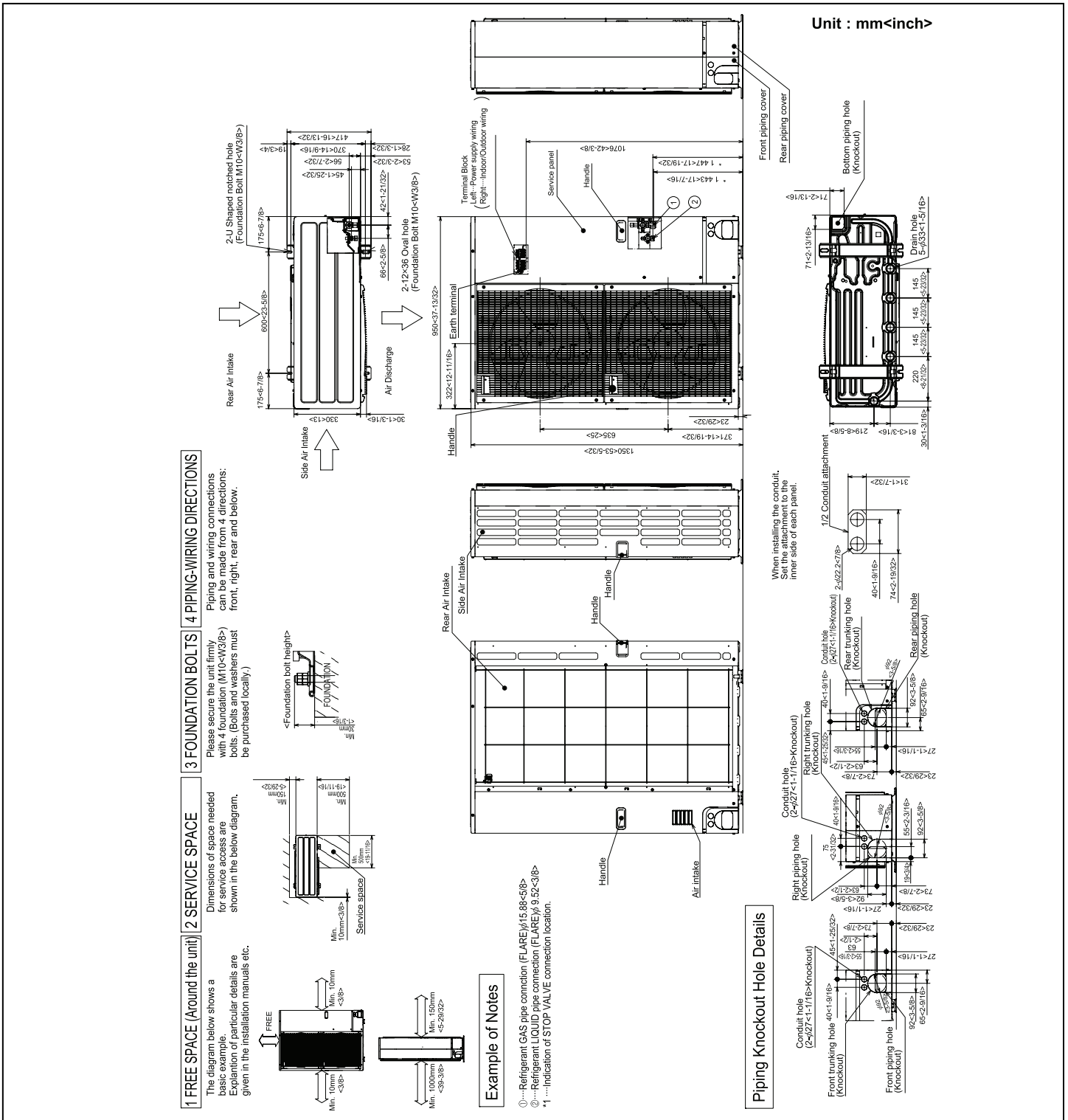


Models	①	②	A	B	C	D
PLA-A12BA4	Refrigerant pipe ...φ6.35	Refrigerant pipe ...φ12.7				
PLA-A18BA4	Flared connection ...1/4 inch	Flared connection ...1/2 inch	9-1/2 (241)	10-3/16 (258)	3-5/32 (80)	2-29/32 (74)
PLA-A24BA4	Refrigerant pipe ...φ9.52	Refrigerant pipe ...φ15.88				
PLA-A30BA4	Flared connection ...3/8 inch	Flared connection ...5/8 inch				
PLA-A36BA4			11-1/16 (281)	11-3/4 (298)	3-11/32 (85)	3-1/32 (77)
PLA-A42BA4						

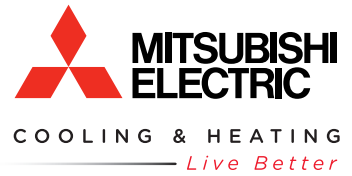
- Note1. As for drain pipe, please use VP-25(O.D. φ1-1/4(φ32) PVC TUBE).
 Drain pump is included.
 Max. lifting height is 70-7/18(850mm) from the ceiling.
 2. As for suspension bolt, please use M10 or W3/8.(Procured at local site)
 3. Electrical box may be removed for the service purpose.
 Make sure to slack the electrical wire little bit for control/power wires connection.
 4. The height of the indoor unit is able to be adjusted with the grille attached.
 5. For the installation of the optional high efficiency filter or optional multi-functional casement.
 1) Add 5-5/16(135mm) to the dimensions * marked on the figure.
 2) The optional high efficiency filter must be used jointly with the multi-functional casement.
 6. When installing the branch ducts, be sure to insulate adequately.
 Otherwise condensation and dripping may occur.
 (It becomes the cause of dew drops/water dew.)
 7. As for necessary installation/service space, please refer to the left figure.



DIMENSIONS: PUZ-HA30NHA2



Intertek



3400 Lawrenceville Suwanee Rd
Suwanee, GA 30024
Tele: 678-376-2900 • Fax: 800-889-9904
Toll Free: 800-433-4822 (#3)
www.mehvac.com
Specifications are subject to change without notice.