

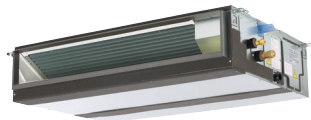
SUBMITTAL DATA: PEAD-A36AA4 & PUZ-A36NHA4 (-BS)

36,000 BTU/H HORIZONTAL-DUCTED HEAT-PUMP SYSTEM

Job Name:

System Reference:

Date:



Indoor Unit: PEAD-A36AA4



Outdoor Unit: PUZ-A36NHA4 (-BS)

GENERAL FEATURES

- Horizontal-ducted indoor unit features medium static pressure capability
- Thin body: 9-7/8" high
- Built-in drain mechanism for condensate removal; lifts to 27-9/16"
- Air filter is included with indoor unit
- Quiet operation—both indoor and outdoor units
- Automatic fan speed control
- Auto restart following a power outage
- Self-check function—integrated diagnostics
- Knockout for ventilation air
- Limited warranty: five years parts and seven years compressors

UNIT OPTION

- Standard Model.....PUZ-A36NHA4
- Sea Coast (BS) Model.....PUZ-A36NHA4-BS

ACCESSORIES

Indoor Unit

- Condensate Pump (BlueDiamond X87-711/721; 115/230V)
- Condensate Pump (Sauermann SI30-115/230; 115/230V)
- Filter Box with MERV 13 Filters (FBM2-4)

Outdoor Unit

- Drain Pan (PAC-SG64DP)
- Drain Socket (PAC-SH71DS)
- Three-pole Disconnect Switch (TAZ-MS303)
- Wind Baffle (WB-PA2)
- Air Outlet Guide (PAC-SG59SG)
- Mounting Base (DSD-400N)
- Mounting Pad (ULTRILITE2)
- Wall-mounting Brackets (CWMB1)

Controller Options

- Wireless Wall-mounted Remote Controller Kit (MHK1)**
 - Portable Central Controller (MCCH1)**
 - Outdoor Air Sensor (MOS1)**
 - Wired Wall-mounted Controller (PAR-31MAA)**
 - Simple MA Remote Controller (PAC-YT53CRAU)**
- **See Submittal for information on each option.
- M-NET Adapter (PAC-SF83MA)
 - CN51 Connector for Multiple Remote Controller Adapters Duct Fan Controller (PAC-725AD)
 - External Heat Adapter CN24 Relay Kit (CN24RELAY-KIT-CM)
 - CN32 Connector for Remote On/Off (PAC-715AD)
 - Remote Temperature Sensor (PAC-SE41TS)
 - Remote Operation Adapter - Display and On/Off (PAC-SF40RM)
 - Hand-held Wireless Remote Controller (PAR-FL32MA; req. PAR-FA32MA-E)
 - Wireless Signal Receiver Module (PAR-FA32MA-E)
 - Lockdown Bracket for Hand-held Controller (RCMKP1CB)
 - Control/Service Tool (PAC-SK52ST)

SEACOAST PROTECTION

- External Outer Panel:
 - Phosphate coating + Acrylic-Enamel coating
- Fan Motor Support:
 - Epoxy resin coating (at edge face)
- Separator Assembly ; Valve Bed:
 - Epoxy resin coating (at edge face)
- Screws (used outer side):
 - Zinc nickel coating 5µm + Polyvinylidene chloride coating

"Blue Fin" treatment is an anti-corrosion treatment that is applied to the condenser coil to protect it against airborne contaminants..



SPECIFICATIONS : PEAD-A36AA4 & PUZ-A36NHA4 (-BS)

Cooling*

Rated Capacity 35,000 Btu/h
 Minimum Capacity 12,000 Btu/h
 SEER 15.0 Btu/h/W
 EER 7.2 Btu/h/W
 Total Input 4,850 W

Heating at 47°F*

Rated Capacity 37,000 Btu/h
 Minimum Capacity 12,000 Btu/h
 HSPF (IV) 9.8 Btu/h/W
 COP 3.29
 Total Input 3,290 W

Heating at 17°F*

Rated Capacity 25,000 Btu/h
 Rated Total Input 2,810 W
 COP 2.60

* Rating Conditions per AHRI Standard

Cooling | Indoor: 80° F (27° C) DB / 67° F (19° C) WB
 Cooling | Outdoor: 95° F (35° C) DB / 75° F (24° C) WB
 Heating at 47°F | Indoor: 70° F (21° C) DB / 60° F (16° C) WB
 Heating at 47°F | Outdoor: 47° F (8° C) DB / 43° F (6° C) WB
 Heating at 17° F | Indoor: 70° F (21° C) DB / 60° F (16° C) WB
 Heating at 17° F | Outdoor: 17° F (-8° C) DB / 15° F (-9° C) WB

Electrical Requirements

Power Supply 208 / 230V, 1-Phase, 60 Hz
 Recommended Fuse/Breaker Size 30 A

Voltage

Indoor - Outdoor S1-S2 AC 208 / 230V
 Indoor - Outdoor S2-S3 DC ±24V

OPERATING CONDITIONS

		Indoor Intake Air Temp.	Outdoor Intake Air Temp.
Cooling	Maximum	95° F (35° C) DB 71° F (22° C) WB	115° F (46° C) DB
	Minimum	67° F (19° C) DB 57° F (14° C) WB	0° F** (-18° C) DB
Heating	Maximum	80° F (27° C) DB 67° F (19° C) WB	70° F (21° C) DB 59° F (15° C) WB
	Minimum	70° F (21° C) DB 60° F (16° C) WB	12° F (-11° C) DB 10° F (-12° C) WB

** With optional wind baffle accessory installed. If not installed, the minimum temperature will be 23° F (-5° C) DB.

Indoor Unit

MCA 3.30 A
 Blower Type x Quantity Sirocco fan x 2
 Blower Motor Type Direct-driven DC Brushless Motor
 Blower Motor (ECM) 2.64 F.L.A.
 Blower Motor Output 244 W
 Airflow (Lo - Med - Hi) 847 - 1,024 - 1,201 Dry CFM
 777 - 953 - 1,130 Wet CFM
 Air Filter Polypropylene Honeycomb
 External Static Pressure 0.14 - 0.20 - 0.28 - 0.40 - 0.60"WG
 Sound Pressure Level (Lo - Med - Hi) 33 - 38 - 42 dB(A)
 SHF 0.75
 Moisture Removal 7.9 pt./h

DIMENSIONS	UNIT INCHES / MM
W	55-1/8 / 1,400
D	28-7/8 / 732
H	9-7/8 / 250

Weight 91 lbs. / 41 kg
 External Finish Galvanized-steel Sheet
 Field Drainpipe Size O.D. 1-1/4" / 32 mm

Outdoor Unit

Compressor DC Inverter-driven Twin Rotary
 MCA 25 A
 MOCP 40 A
 Fan Motor (ECM) 0.75 F.L.A.
 Sound Pressure Level
 Cooling 48 dB(A)
 Heating 50 dB(A)

DIMENSIONS	INCHES / MM
W	37-3/8 / 950
D	13 + 1-3/16 / 330 + 30
H	37-1/8 / 943

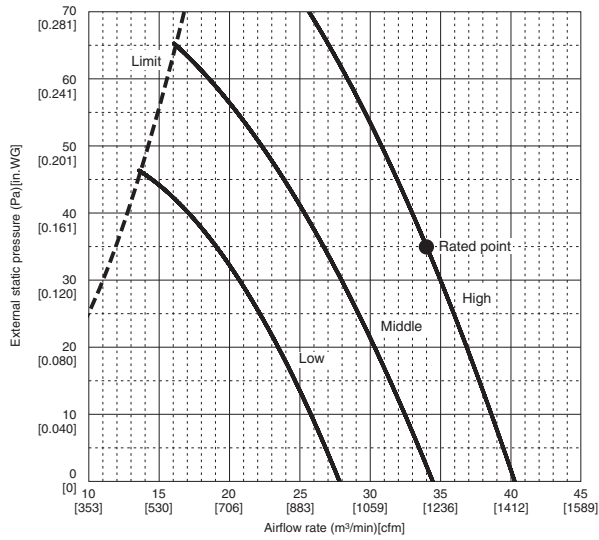
Weight 165 lbs. / 75 kg
 External Finish Munsell No. 3Y 7.8 / 1.1
 Refrigerant Type R410A
 Refrigerant Pipe Size O.D.
 Gas Side 5/8" / 15.88 mm
 Liquid Side 3/8" / 9.52 mm
 Max. Refrigerant Pipe Length 165' / 50 m
 Max. Refrigerant Pipe Height Difference 100' / 30 m
 Connection Method Flared

Notes:

INDOOR UNIT PEAD-A36AA4 FAN PERFORMANCE AND AIRFLOW RATES

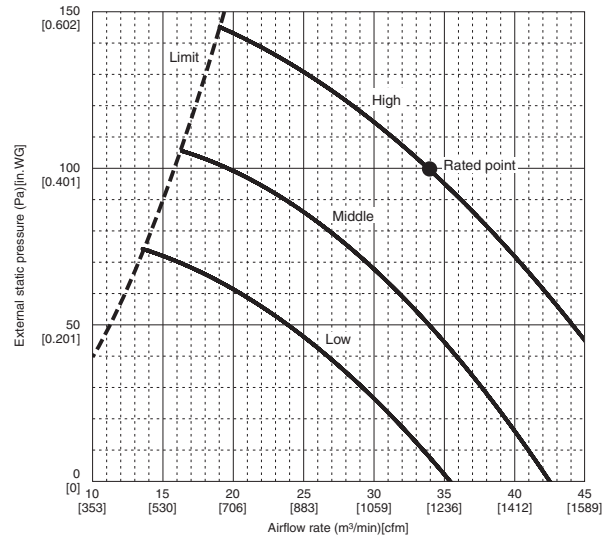
PEAD-A36AA4

(External static pressure 35Pa [0.14 in. WG]) 208-230V 60Hz



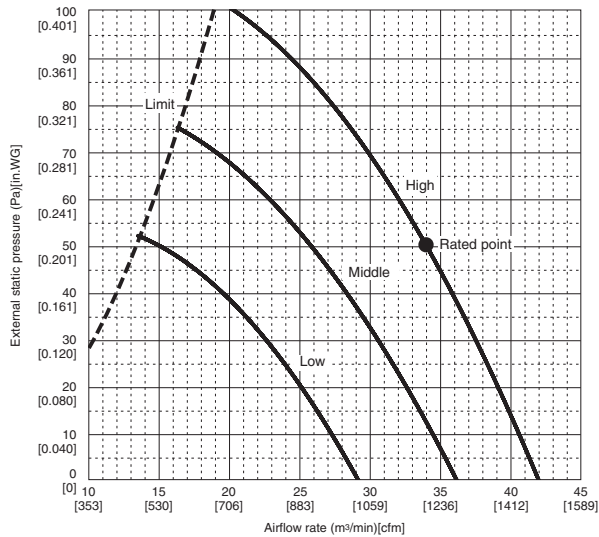
PEAD-A36AA4

(External static pressure 100Pa [0.4 in. WG]) 208-230V 60Hz



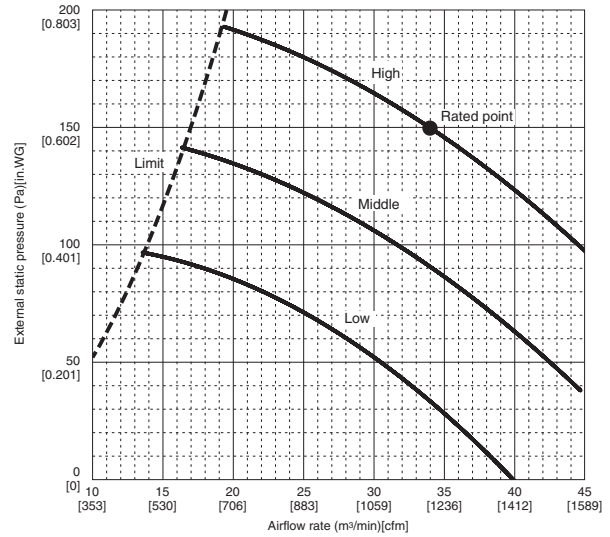
PEAD-A36AA4

(External static pressure 50Pa [0.2 in. WG]) 208-230V 60Hz



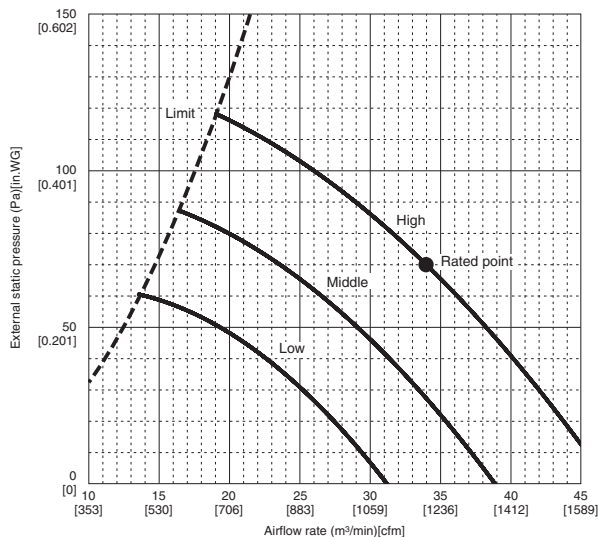
PEAD-A36AA4

(External static pressure 150Pa [0.6 in. WG]) 208-230V 60Hz



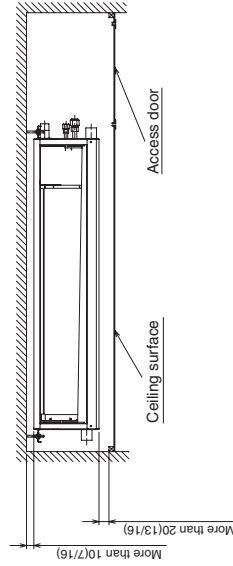
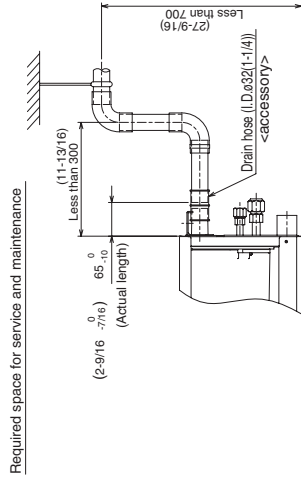
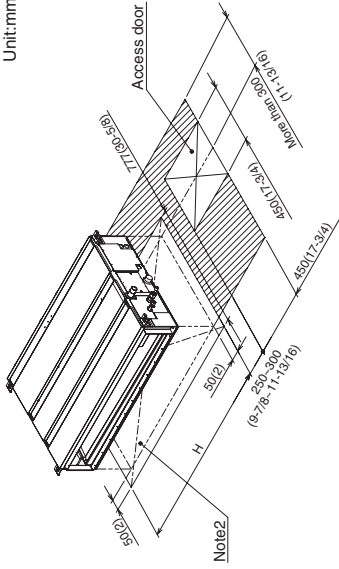
PEAD-A36AA4

(External static pressure 70Pa [0.3 in. WG]) 208-230V 60Hz

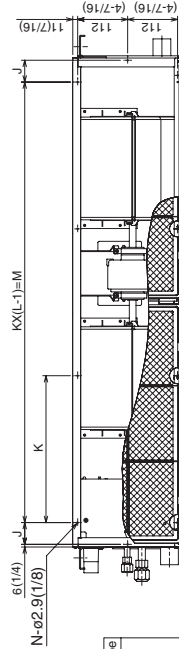


DIMENSIONS: PEAD-A36AA4

Unit:mm(in.)



Make the access door at the appointed position properly for service maintenance.



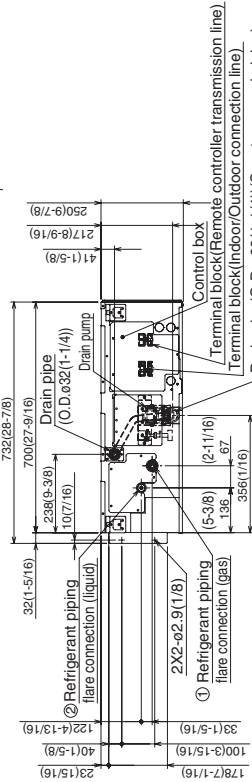
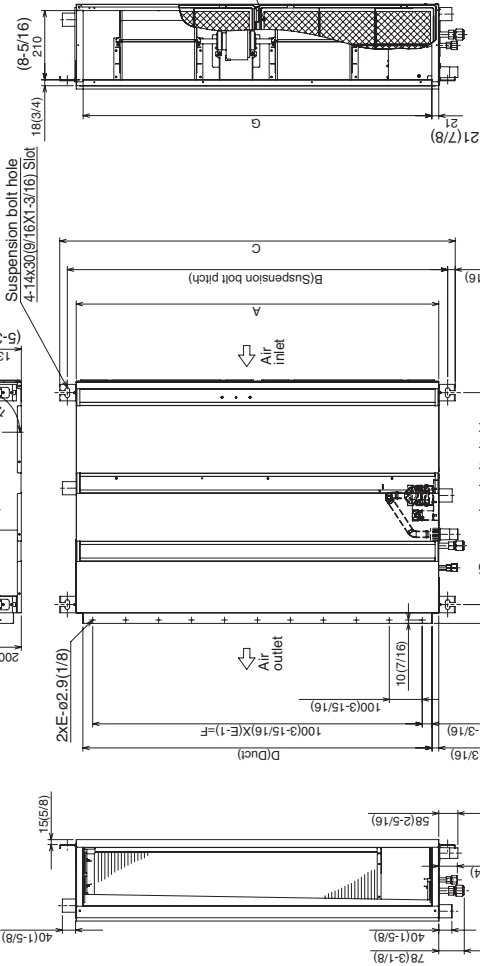
Ventilation air intake Ø100(3-15/16) knock out hole Note 4

3-Ø2.9(1/8) mounting hole

Suspension bolt hole 4-14x30(9/16x1-3/16) Slot

Drain pipe(O.D. Ø32(1-1/4)) (Emergency draining)

156(6)

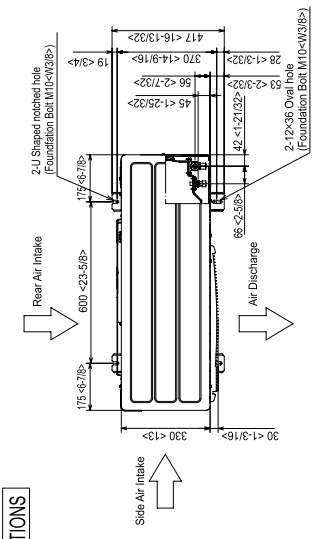


Model	A	B	C	D	E	F	G	H	J	K	L	M	N	① Gas pipe	② Liquid pipe
PEAD-A24-30AA4	1100 (43-5/16)	1154 (45-7/16)	1200 (47-1/4)	1060 (41-3/4)	11 (39-3/8)	1000 (41-11/16)	1056 (41-11/16)	1200 (47-1/4)	49 (1-15/16)	330 (13)	4 (13)	990 (39)	10	Ø15.88 (5/8)	Ø9.52 (3/8)
PEAD-A36-42AA4	1400 (55-1/8)	1454 (57-1/4)	1500 (59-1/16)	1360 (53-9/16)	14 (51-3/16)	1300 (51-3/16)	1356 (53-12/16)	1500 (59-1/16)	54 (2-3/16)	320 (12-5/8)	5 (12-5/8)	1280 (50-7/16)	12	Ø15.88 (5/8)	Ø9.52 (3/8)

- NOTE 1. Use M10 screw for the Suspension bolt (field supply).
 2. Keep the service space for the maintenance at the bottom.
 3. This chart indicates for PEAD-A24-30-36-42AA4 models, which have 2 fans.
 4. In case of the inlet duct is used, remove the air filter (supplied with the unit), then install a filter (field supplied) at suction side.

DIMENSIONS: PUZ-A36NHA4 (-BS)

Unit: mm (inch)



4 PIPING-WIRING DIRECTIONS

Piping and wiring connections can be made from 4 directions: front, right, rear and below.

3 FOUNDATION BOLTS

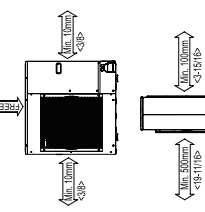
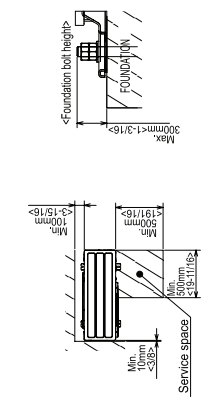
Please secure the unit firmly with 4 foundation bolts. Bolts and washers must be purchased locally.

2 SERVICE SPACE

Dimensions of space needed for service access are shown in the below diagram.

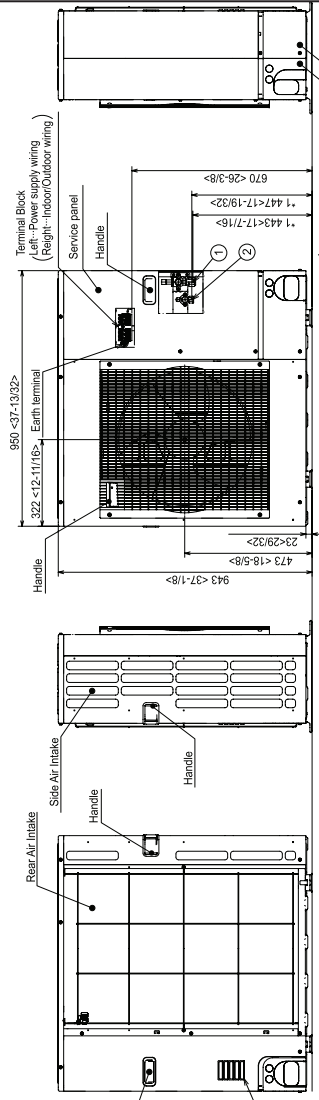
1 Clearance Area (Around unit)

The diagram below shows a basic clearance area. Explanation of particular details are given in the installation manuals etc.

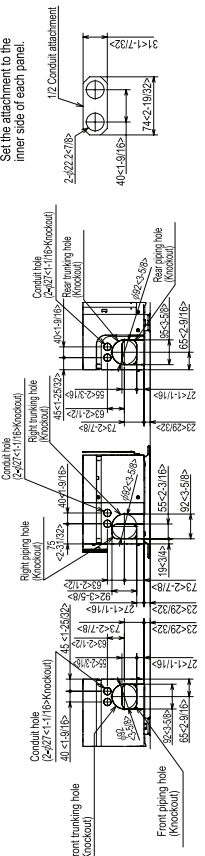


Example of Notes

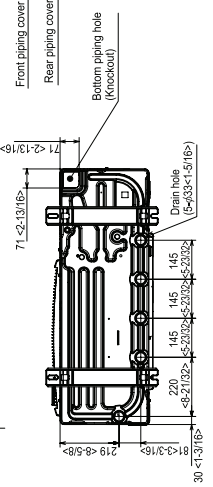
- ①--- Refrigerant GAS pipe connection (FLARE) φ15.88×5.8②
- ②--- Refrigerant LIQUID pipe connection (FLARE) φ9.52×3③
- * 1--- Indication of STOP VALVE connection location.



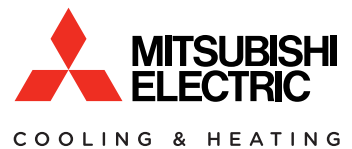
Piping Knockout Hole Details



When installing the conduit, set the attachment to the inner side of each panel.



Intertek



1340 Satellite Boulevard
Suwanee, GA 30024
Toll Free: 800-433-4822
www.mehvac.com