

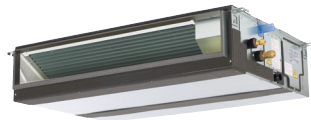
SUBMITTAL DATA: PEAD-A30AA4 & PUZ-HA30NHA4

30,000 BTU/H HORIZONTAL-DUCTED HYPER HEAT-PUMP SYSTEM

Job Name:

System Reference:

Date:



Indoor Unit: PEAD-A30AA4



Outdoor Unit: PUZ-HA30NHA4



GENERAL FEATURES

- High heating capacity at low outside temperatures
- Exhibits 100% of rated heating capacity at 5° F; 90% of rated heating capacity at -4° F
- Horizontal-ducted indoor unit features medium static pressure capability and a thin 9-7/8" high body
- Built-in drain mechanism for condensate removal; lifts to 27-9/16"
- Air filter is included with indoor unit
- Self-check function—integrated diagnostics
- Knockout for ventilation air
- Limited warranty: five years parts and seven years compressors

ACCESSORIES
Outdoor Unit

- M-NET Adapter (PAC-SF81MA-E)
- Wind Baffle (One Piece)* (WB-PA2)
- Air Outlet Guide (One Piece)* (PAC-SG59SG)

*PUY(Z) requires two outlet guides or wind baffles for installation.

Controller Options

- Wireless Wall-mounted Remote Controller Kit (MHK1)**
- Portable Central Controller (MCCH1)**
- Outdoor Air Sensor (MOS1)**
- Wired Wall-mounted Controller (PAR-31MAA)**
- Simple MA Remote Controller (PAC-YT53CRAU)**

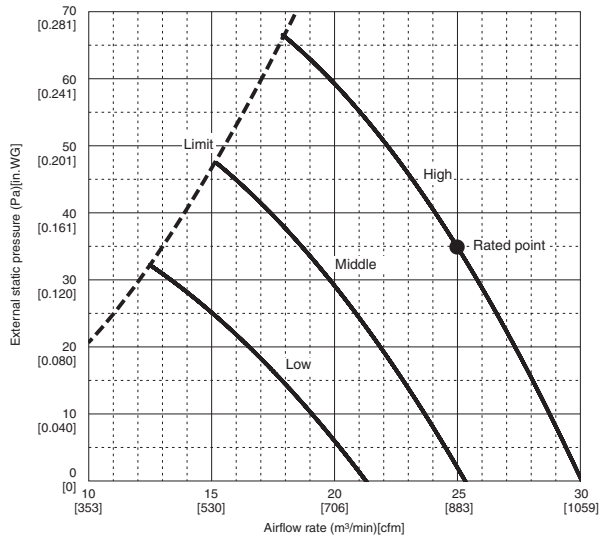
**See Submittal for information on each option.

- M-NET Adapter (PAC-SF81MA)
- Remote Temperature Sensor (PAC-SE41TS)
- Hand-held Wireless Remote Controller (PAR-FL32MA; req. PAR-FA32MA-E)
- Wireless Signal Receiver Module (PAR-FA32MA-E)

INDOOR UNIT PEAD-A30AA4 FAN PERFORMANCE AND AIRFLOW RATES

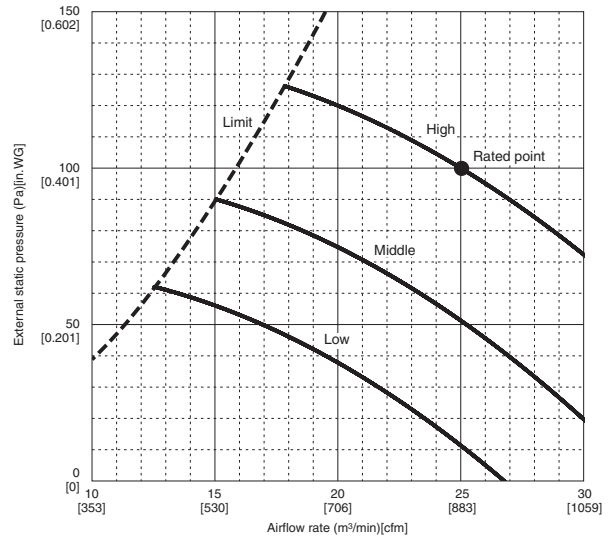
PEAD-A30AA4

(External static pressure 35Pa [0.14 in. WG]) 208-230V 60Hz



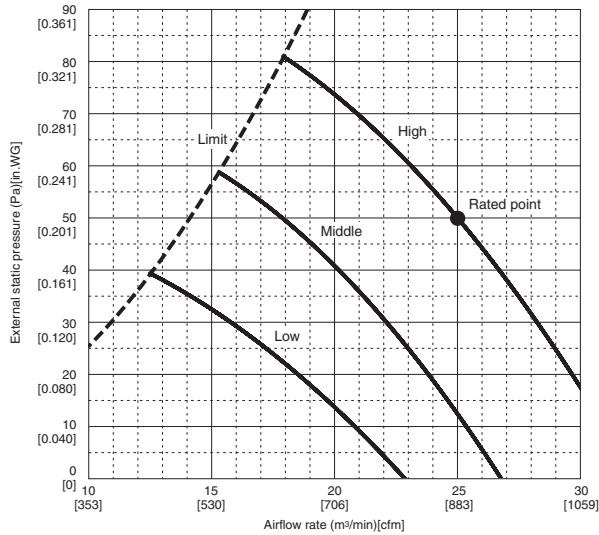
PEAD-A30AA4

(External static pressure 100Pa [0.4 in. WG]) 208-230V 60Hz



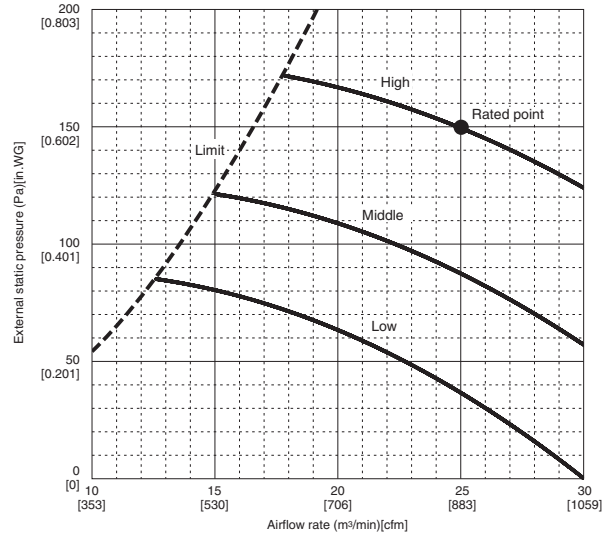
PEAD-A30AA4

(External static pressure 50Pa [0.2 in. WG]) 208-230V 60Hz



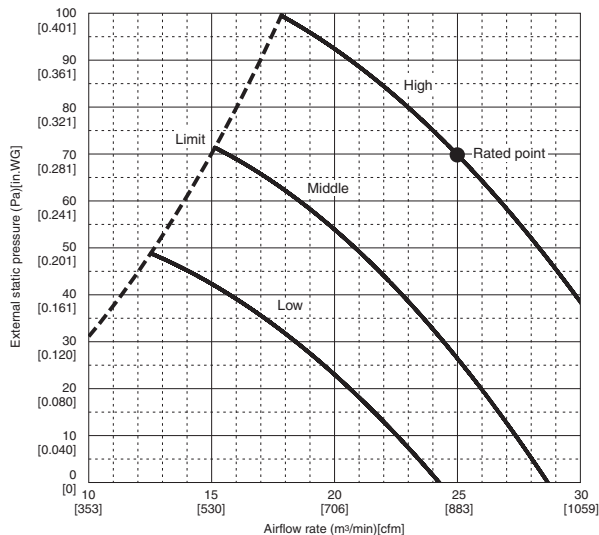
PEAD-A30AA4

(External static pressure 150Pa [0.6 in. WG]) 208-230V 60Hz



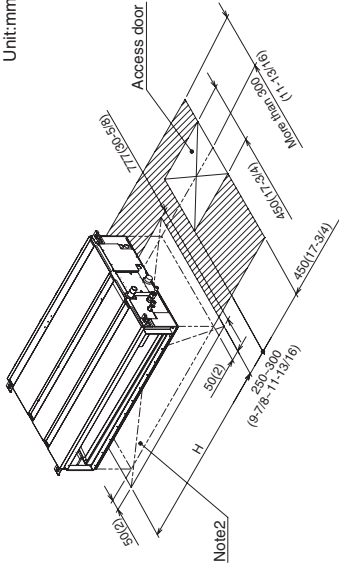
PEAD-A30AA4

(External static pressure 70Pa [0.3 in. WG]) 208-230V 60Hz

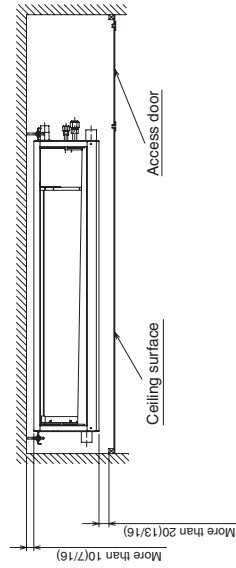
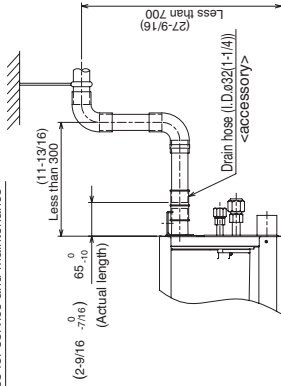


DIMENSIONS: PEAD-A30AA4

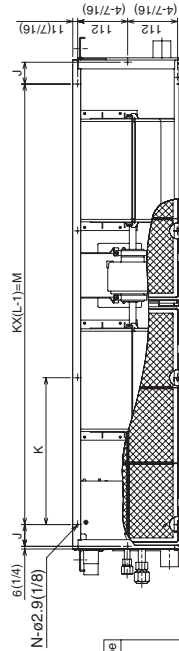
Unit:mm(in.)



Required space for service and maintenance



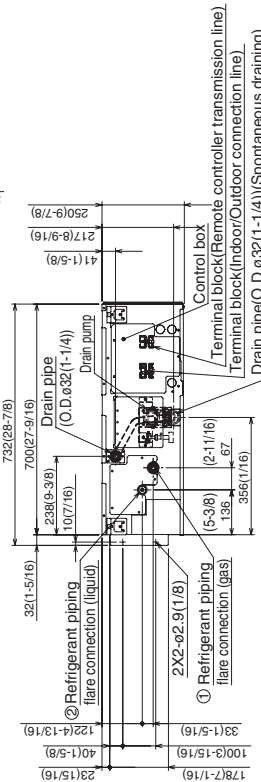
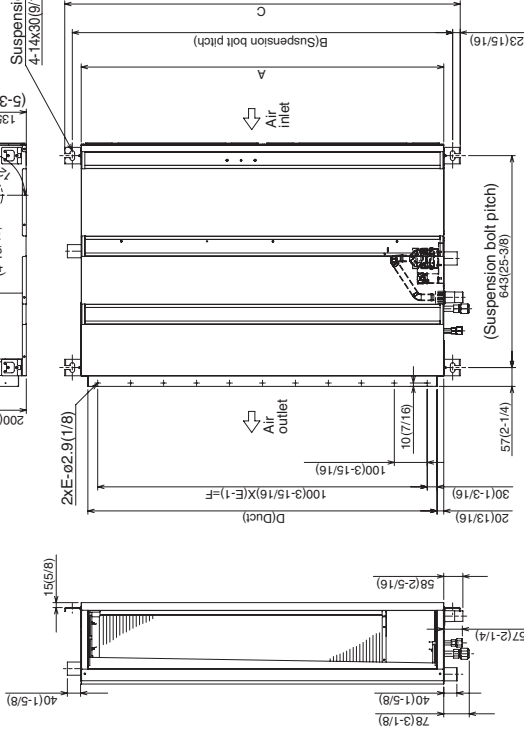
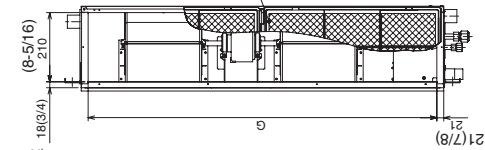
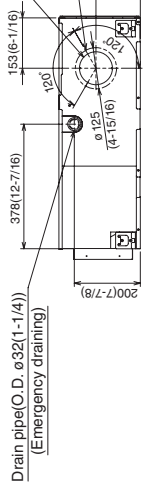
Make the access door at the appointed position properly for service maintenance.



Ventilation air intake ø100(3-15/16) knock out hole Note 4

3-ø2.9(1/8) mounting hole

Suspension bolt hole 4-14x30(9/16x1-3/16) Slot

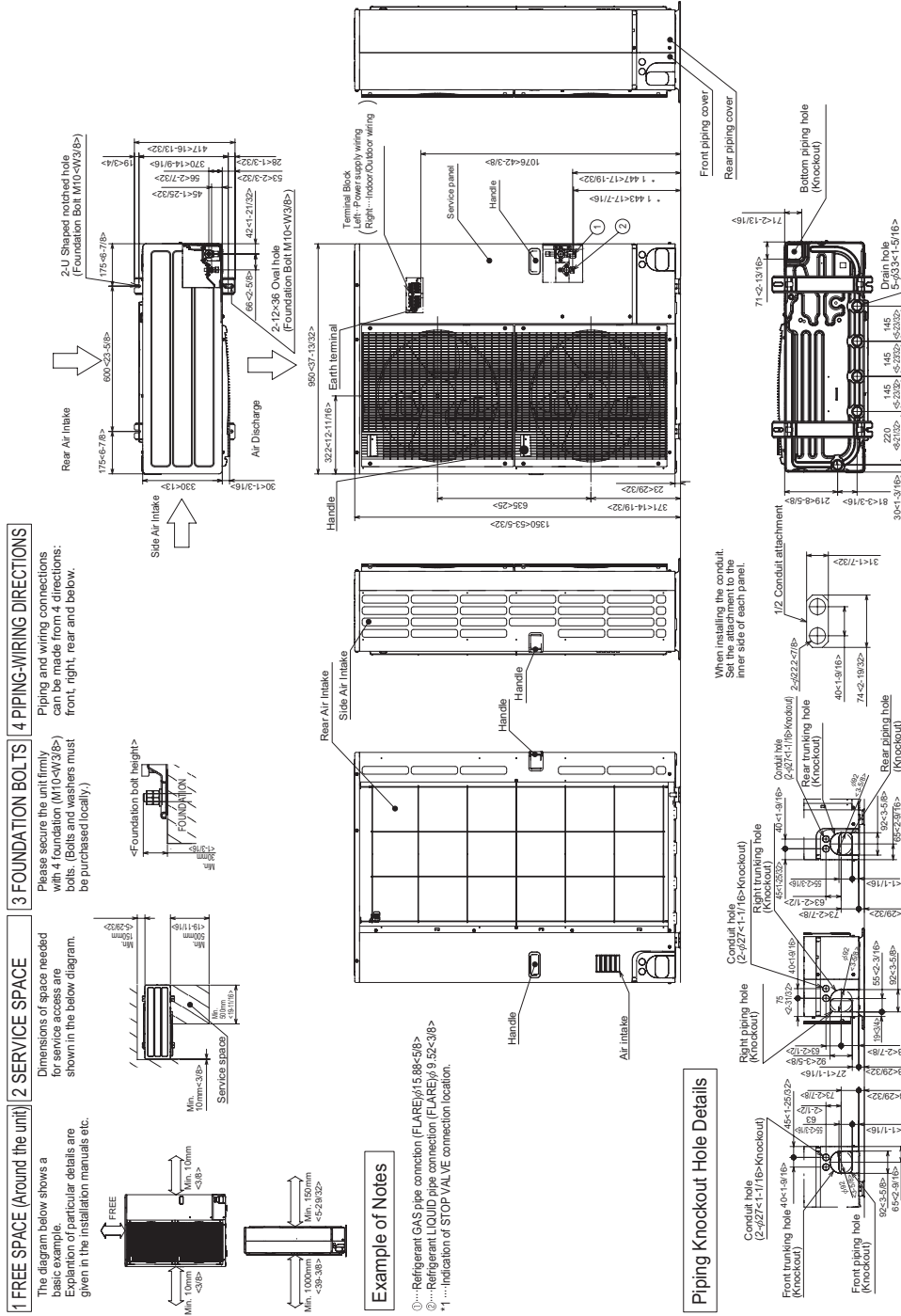


Model	A	B	C	D	E	F	G	H	J	K	L	M	N	⊙ Gas pipe	⊙ Liquid pipe
PEAD-A24_30AA4	1100 (43-5/16)	1154 (45-7/16)	1200 (47-1/4)	1060 (41-3/4)	11 (39-3/8)	1000 (41-11/16)	1056 (41-11/16)	1200 (47-1/4)	49 (1-15/16)	330 (13)	4 (13)	990 (39)	10	ø15.88 (5/8)	ø9.52 (3/8)
PEAD-A36_42AA4	1400 (55-1/8)	1454 (57-1/4)	1500 (59-1/16)	1360 (53-9/16)	14 (51-3/16)	1300 (51-3/16)	1356 (53-1/2)	1500 (59-1/16)	54 (2-3/16)	320 (12-5/8)	5 (12-5/8)	1280 (50-7/16)	12		

- NOTE 1. Use M10 screw for the Suspension bolt (field supply).
 2. Keep the service space for the maintenance at the bottom.
 3. This chart indicates for PEAD-A24-30-36-42AA4 models, which have 2 fans.
 4. In case of the inlet duct is used, remove the air filter (supplied with the unit), then install a filter (field supplied) at suction side.

DIMENSIONS: PUZ-HA30NHA4

Unit : mm<math>\langle\text{inch}>



Intertek



COOLING & HEATING

1340 Satellite Boulevard
Suwanee, GA 30024
Toll Free: 800-433-4822
www.mehvac.com