

Job Name: _____

System Reference: _____ Date: _____



Indoor Unit: PCA-A36KA6



Outdoor Unit: PUZ-HA36NHA4

ACCESSORIES:

Indoor Unit

- Condensate Pump (BlueDiamond X87-711/721; 115/230V)
- Condensate Pump (Sauermann SI30-115/230; 115/230V)
- High-Efficiency Filter (PAC-SH90KF-E)
- iSee Sensor (PAC-SH91MK-E)
- Disconnect Switch (TAZ-MS303)

Outdoor Unit

- Air Outlet Guide (PAC-SG59SG-E [x2])
- Wind Baffle (WB-PA2 [x2])*
- *Allows operation to 0° F (-18° C)
- Mounting Base (QSMS1202)
- Wall Bracket (QSWB2000M-1)

Controls

- Wireless Controller (MHK1)
- Advanced Wired Controller (PAR-31MAA)
- Simple Wired Controller (PAC-YT53CRAU)
- M-NET Adapter (PAC-SF83MA-E)
- Temperature Sensor (PAC-SE41TS)

SPECIFICATIONS:

Rated Conditions (Capacity / Input)*		
Cooling ¹	Btu/h / W	34,000 / 2,810
Heating at 47° F ²	Btu/h / W	38,000 / 3,270
Heating at 17° F ³	Btu/h / W	27,000 / 3,490

Capacity Range	Minimum	Maximum	
Cooling ¹	Btu/h	18,000	36,000
Heating at 47° F ²	Btu/h	18,000	40,000
Heating at 17° F ³	Btu/h	-	38,000
Heating at 5° F ⁴	Btu/h	-	38,000

1. Cooling | Indoor: 80° F(27° C)DB / 67° F(19° C)WB; Outdoor: 95° F(35° C)DB / 75° F(24° C)WB*
 2. Heating at 47° F | Indoor: 70° F(21° C)DB / 60° F(16° C)WB; Outdoor: 47° F(8° C)DB / 43° F(6° C)WB*
 3. Heating at 17° F | Indoor: 70° F(21° C)DB / 60° F(16° C)WB; Outdoor: 17° F(-8° C)DB / 15° F(-9° C)WB*
 4. Heating at 5° F | Indoor: 70° F(21° C)DB / 60° F(16° C)WB; Outdoor: 5° F(-15° C)DB / 5° F(-15° C)WB
- * Rating Conditions per AHRI Standard

Operating Range	
Cooling	0° F** to 115° F (-18° C to 46° C) DB
Heating	-13° F to 70° F (-25° C to 21° C) DB

** The minimum temperature will be 23° F (-5° C) DB if optional wind baffle accessory is not installed.

AHRI Efficiency Ratings	
EER	12.1
SEER	16.6
HSPF	10.3
COP at 47° F	3.41
COP at 17° F	2.27

Electrical Power Requirements	208 / 230V, 1-Phase, 60 Hz
-------------------------------	----------------------------

Minimum Circuit Ampacity (MCA)		
Indoor / Outdoor	A	2 / 28

Indoor Unit		
Blower Motor (ECM)	F.L.A.	0.97
Blower Motor Output	W	160
SHF / Moisture Removal		0.73 / 8.2 pt./h

Outdoor Unit		
Compressor		INVERTER
Fan Motor (ECM)	F.L.A.	0.4 + 0.4
MOCP	A	40

Airflow Rate (Low-M1-M2-Hi)			
Indoor (Cooling)	DRY	CFM	775-850-920-990
	WET		705-775-850-920
Outdoor	DRY		3,530

Sound Pressure Level			
Indoor (Low-M1-M2-Hi)		dB(A)	37-39-41-43
Outdoor	Cooling		52
	Heating	53	

External Dimensions		
Indoor (H x W x D)	In.(mm)	9-1/16 x 63 x 26-3/4 (230 x 1,600 x 680)
Outdoor (H x W x D)		53-1/8 x 37-3/8 x 13 + 1-3/16 (1,350 x 950 x 330 + 30)

Net Weight		
Indoor	Lbs.(kg)	79 (36)
Outdoor		265 (120)

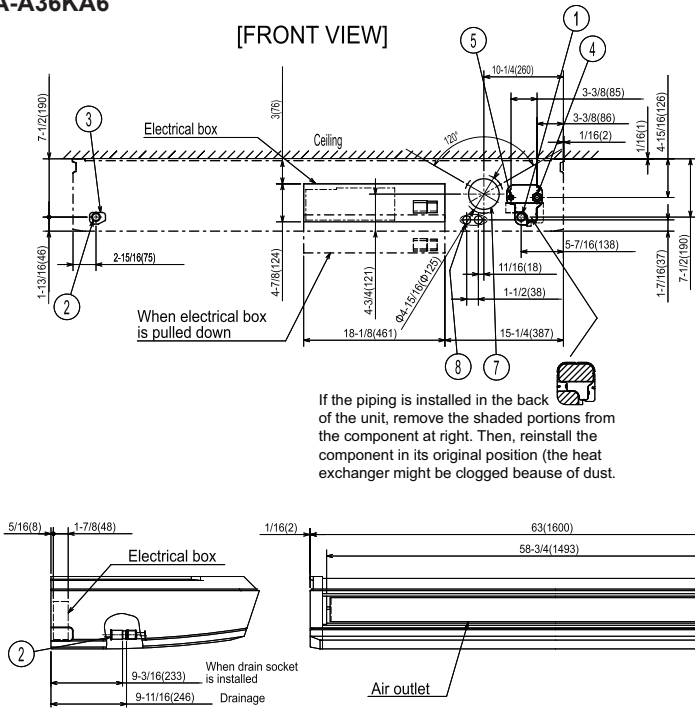
External Finish	
Indoor	White Munsell 6.4Y 8.9/0.4
Outdoor	Ivory Munsell 3Y 7.8/1.1

Refrigerant	R410A ; 12lbs.
-------------	----------------

Refrigerant Piping (Flared)		
Liquid (High Pressure)	In.(mm)	3/8 (9.52)
Gas (Low Pressure)		5/8 (15.88)
Maximum Total Refrigerant Pipe Length	Ft. (m)	245 (75)
Maximum Vertical Separation	Ft. (m)	100 (30)

DIMENSIONS: PCA-A36KA6 & PUZ-HA36NHA4

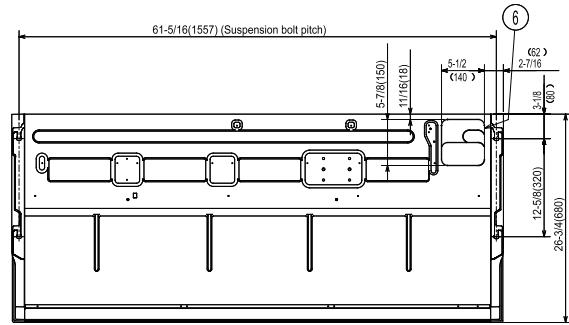
PCA-A36KA6



NOTES.

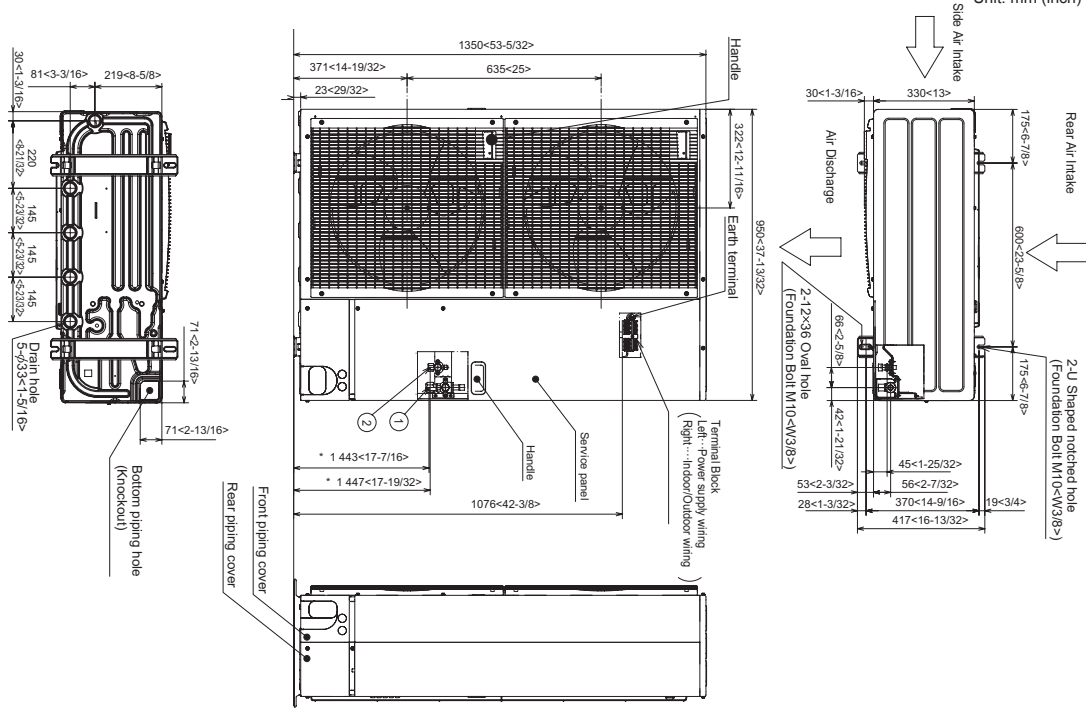
1. Use M10 or W3/8 screw for anchor bolt.
2. Please be sure when installing the drain lift up mechanism (option parts), refrigerant pipe will be only upward.

Unit: inch (mm)



- ① Drainage pipe connection (1(26mm) I.D.)
 - ② Drainage pipe connection (for the left arrangement)
 - ③ Knockout hole for left drain-piping arrangement
 - ④ Refrigerant-pipe connection (gas pipe side/flared connection)
 - ⑤ Refrigerant-pipe connection (liquid pipe side/flared connection)
 - ⑥ Knockout hole for upper drain pipe arrangement
 - ⑦ Knockout hole for ventilation air intake $\Phi 3-15/16(\Phi 100)$
 - ⑧ Knockout hole for wiring arrangement $\Phi 7/8(\Phi 22)$
- Accessory... Drain socket (1(26mm) I.D.)

PUZ-HA36NHA4



COOLING & HEATING

1340 Satellite Boulevard, Suwanee, GA 30024
Toll Free: 800-433-4822 www.mehvac.com

