

September 2010

No. OCB468
REVISED EDITION-A



PARTS CATALOG

[Model name]
<Outdoor unit>

MXZ-8B48NA

[Service Ref.]

MXZ-8B48NA
MXZ-8B48NAR1

Revision:

- MXZ-8B48NAR1 has been added in REVISED EDITION-A.
- Some descriptions have been modified.

- Please void OCH468.

<Branch box>

PAC-AKA51BC

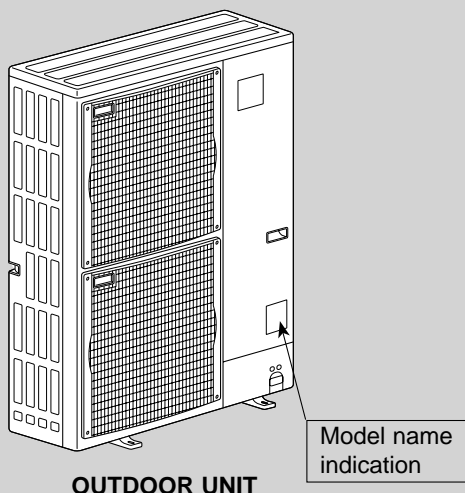
PAC-AKA31BC

PAC-AKA51BC
PAC-AKA31BC

NOTE:

- RoHS compliant products have <G> mark on the spec name plate.

(Indispensable optional parts
for MXZ-8B48NA)

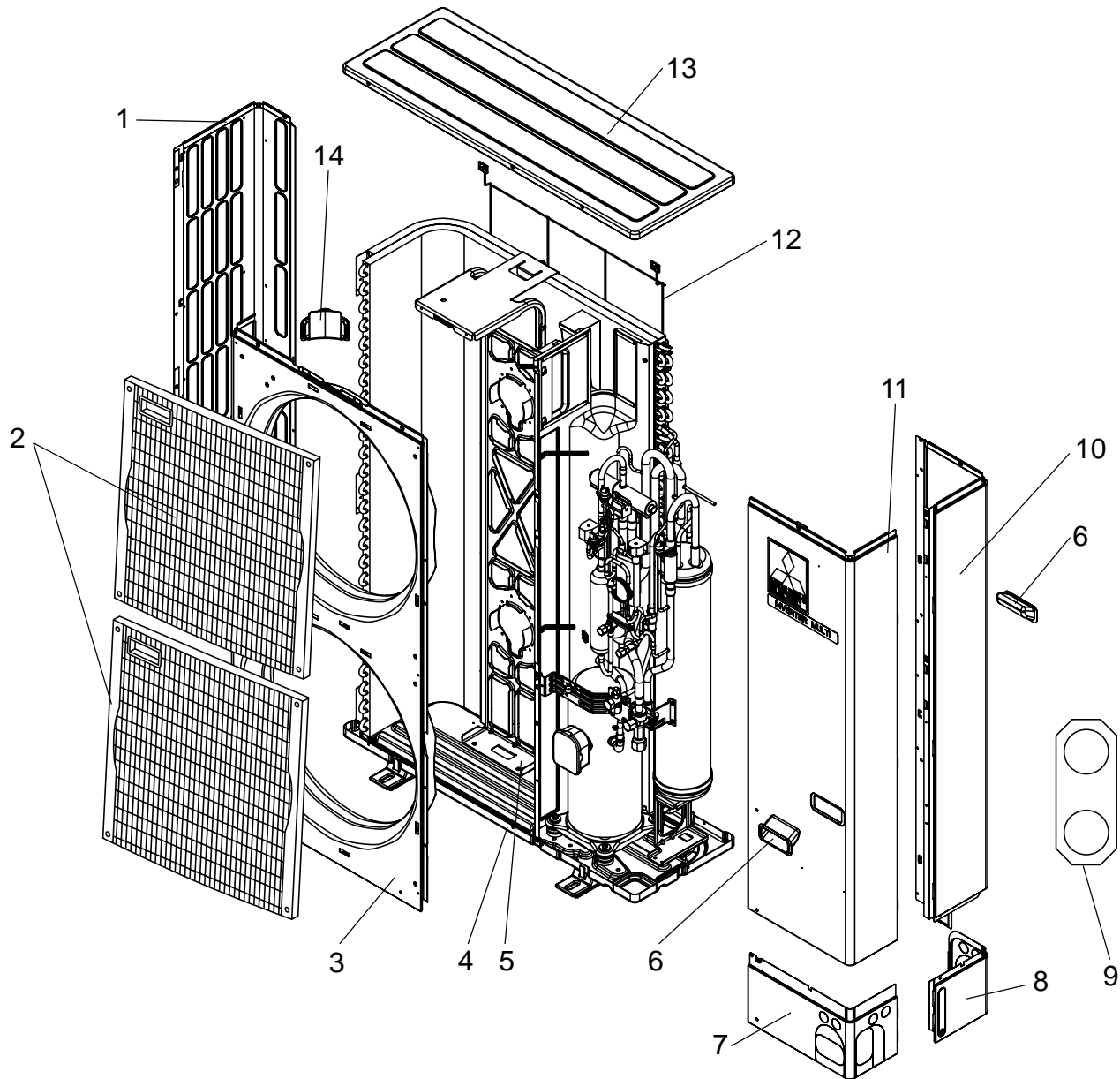


CONTENTS

1. RoHS PARTS LIST.....	2
2. OPTIONAL PARTS.....	10

SERVICE MANUAL (OCH468)

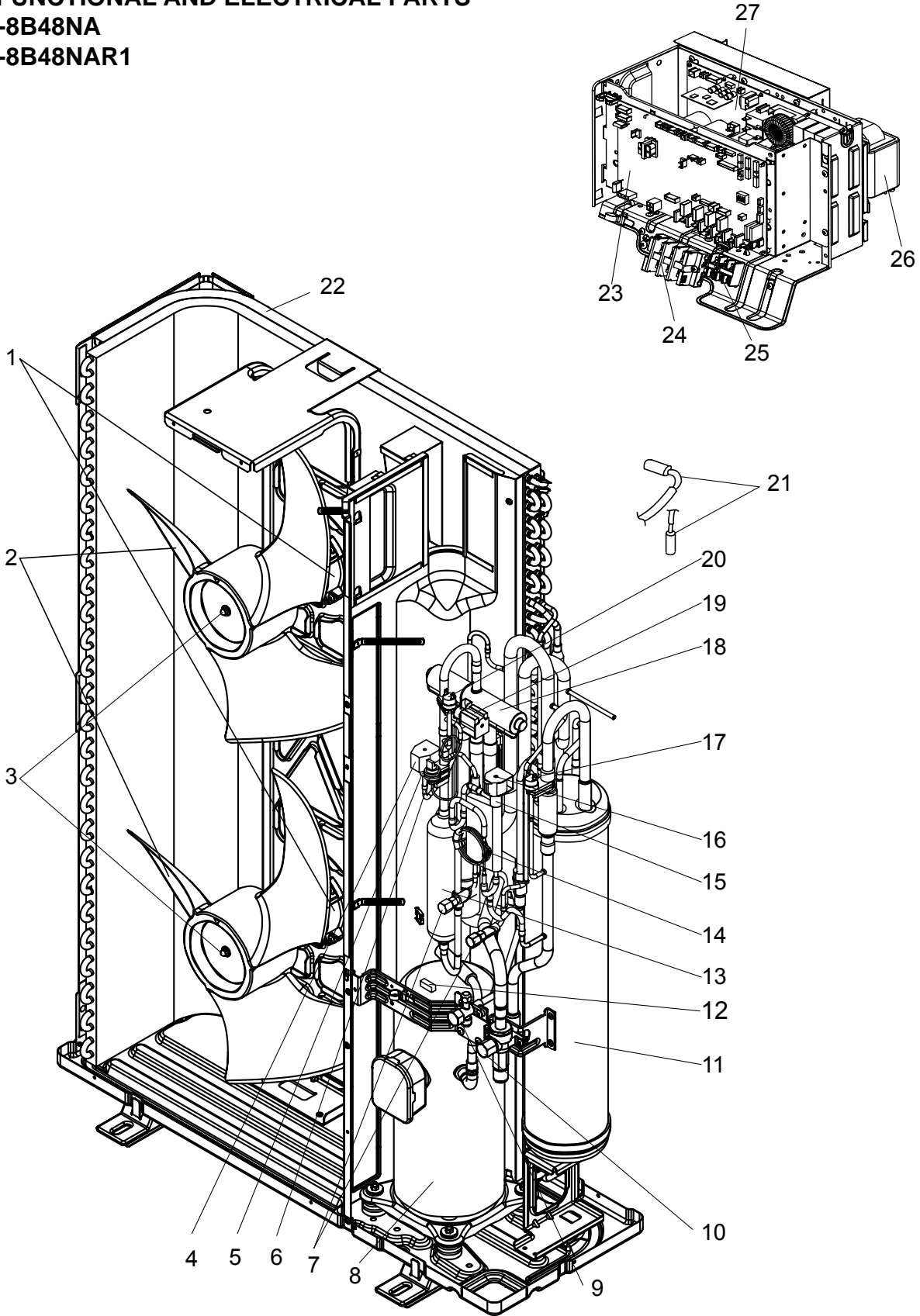
1-1. STRUCTURAL PARTS
MXZ-8B48NA
MXZ-8B48NAR1





No.	RoHS	Part No.	Part Name	Specification	Q'ty/set	Remarks (Drawing No.)	Wiring Diagram Symbol	Recom- mended Q'ty
					MXZ-8B48NA MXZ-8B48NAR1			
1	G	T7W E03 662	SIDE PANEL (L)		1			
2	G	T7W E03 691	FAN GRILLE		2			
3	G	T7W E06 667	FRONT PANEL		1			
4	G	R01 E31 686	BASE ASSY		1			
5	G	R01 E27 130	MOTOR SUPPORT		1			
6	G	R01 E01 655	HANDLE		2			
7	G	R01 E13 658	COVER PANEL (FRONT)		1			
8	G	R01 E11 658	COVER PANEL (REAR)		1			
9	G	T7W E01 617	CONDUIT PLATE		1			
10	G	R01 E32 661	SIDE PANEL (R)		1			
11	G	T7W E08 668	SERVICE PANEL		1			
12	G	R01 E07 698	REAR GUARD		1			
13	G	R01 E14 641	TOP PANEL		1			
14	G	R01 E02 655	HANDLE		1			

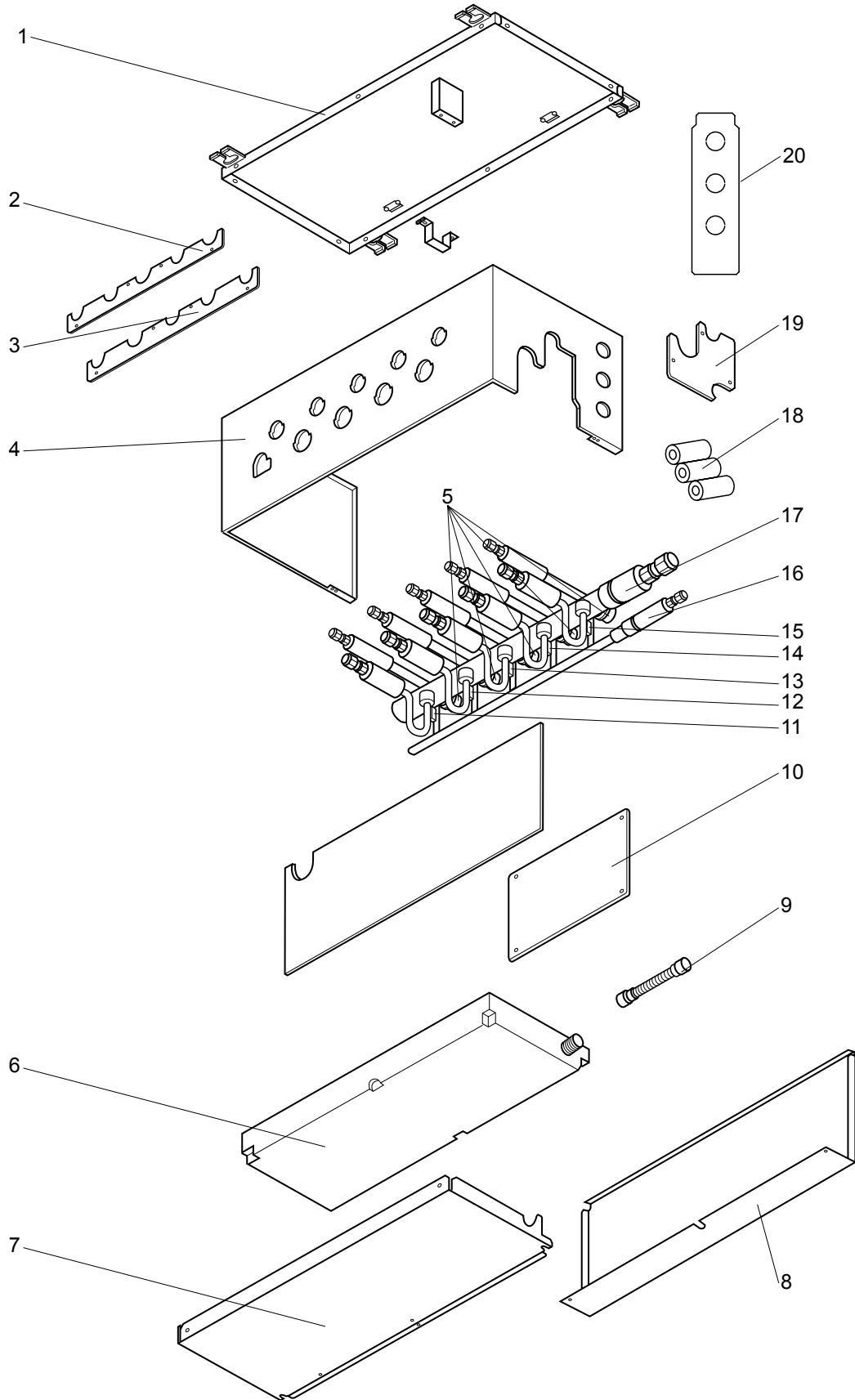
1-2. FUNCTIONAL AND ELECTRICAL PARTS
MXZ-8B48NA
MXZ-8B48NAR1



Part numbers that are circled are not shown in the figure.

No.	R/O/S	Part No.	Part Name	Specification	Q'ty/set		Remarks (Drawing No.)	Wiring Diagram Symbol	Recom- mended Q'ty
					MXZ-8B				
					48NA	48NAR1			
1	G	T7W E27 763	FAN MOTOR		2	2		MF1, 2	
2	G	R01 E08 115	PROPELLER FAN		2				
	G	R01 E12 115	PROPELLER FAN			2			
3	G	R01 E09 097	NUT		2	2			
4	G	T7W E56 242	SOLENOID VALVE COIL		1	1		SV1	
5	G	T7W E04 428	SOLENOID VALVE (SV1)		1	1			
6	G	R01 E07 208	HIGH PRESSURE SENSOR		1	1		63HS	
7	G	T7W E12 413	CHARGE PLUG		2	2			
8	G	T97 415 779	COMPRESSOR	ANB33FDSMT	1	1		MC	
9	G	T7W E04 410	STOP VALVE	3/8	1	1			
10	G	T7W E06 411	BALL VALVE	5/8	1	1			
11	G	R01 E36 440	ACCUMULATOR		1	1			
12	G	R01 E30 201	THERMISTOR (COMPRESSOR)			1		TH4	
13	G	T7W E02 490	OIL SEPARATOR		1	1			
14	G	R01 E26 425	CAPILLARY TUBE	$\phi 2.5 \times \phi 0.8 \times 1000\text{mm}$	1	1			
15	G	R01 E13 428	SOLENOID VALVE (SV2)		1	1			
16	G	T7W E31 242	SOLENOID VALVE COIL		1	1		SV2	
17	G	R01 E00 209	LOW PRESSURE SWITCH		1	1		63L	
18	G	T7W E05 403	4-WAY VALVE		1	1			
19	G	T7W E26 242	SOLENOID VALVE COIL (4-WAY VALVE)		1			21S4	
	G	T7W 262 242	SOLENOID VALVE COIL (4-WAY VALVE)			1		21S4	
20	G	T7W E07 208	HIGH PRESSURE SWITCH		1	1		63H	
21	G	R01 E94 202	THERMISTOR (OUTDOOR 2PHASE PIPE, OUTDOOR)		1	1		TH6, 7	
22	G	R01 E91 408	HEAT EXCHANGER		1	1			
23	G	T7W E94 315	CONTROLLER CIRCUIT BOARD		1	1		C.B.	
24	G	T7W 602 246	TERMINAL BLOCK	3P (L1,L2,GR)	1	1		TB1	
25	G	R01 E19 246	TERMINAL BLOCK	3P (S1,S2,S3)	1	1		TB2	
26	G	R01 E43 259	REACTOR		1	1		DCL	
27	G	T7W E62 313	POWER CURCUIT BOARD		1	1		P.B.	
28	G	R01 E14 239	FUSE	250V 6.3A	4	4		F1,F2,F3,F4	
29	G	R01 E20 254	MAIN SMOOTHING CAPACITOR		1	1		CB	
30	G	T7W E03 201	THERMISTOR (DISCHARGE)		1			TH4	
31	G	R01 H00 202	THERMISTOR (OUTDOOR PIPE)		1	1		TH3	
32	G	R01 E27 425	CAPILLARY TUBE (SV2)	$\phi 4.0 \times \phi 2.4 \times 250\text{mm}$	1	1			

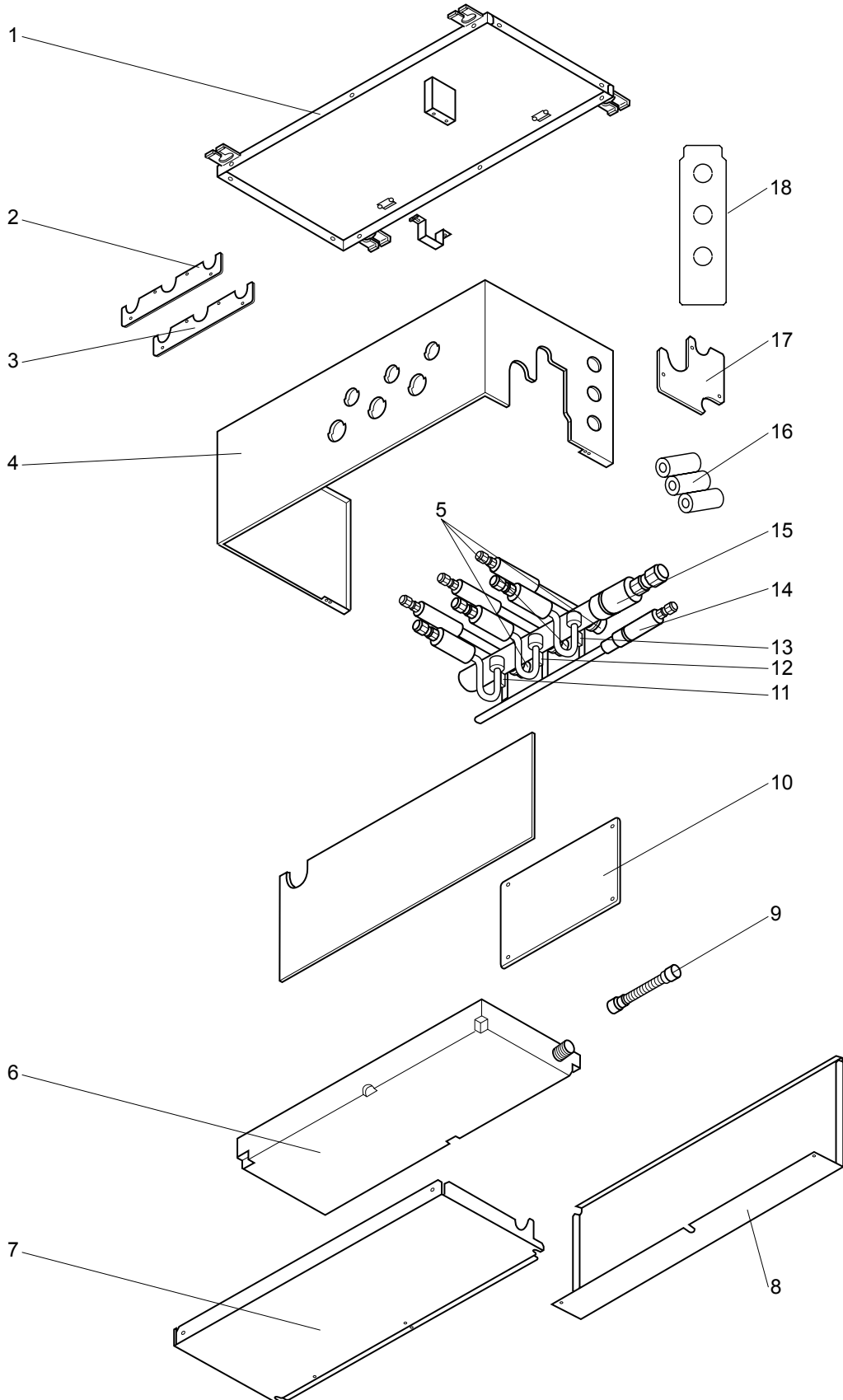
1-3. FUNCTIONAL PARTS
BRANCH BOX : PAC-AKA51BC



Part numbers that are circled are not shown in the figure.

No.	RoHS	Part No.			Part Name	Specification	Q'ty/set		Remarks	Wiring Diagram Symbol	Recommended Q'ty
								PAC-AKA51BC			
1	G	R01	E22	641	TOP PANEL		1				
2	G	R01	E11	689	COVER-L		1				
3	G	R01	E13	689	COVER-G		1				
4	G	T7W	E34	661	SIDE PANEL		1				
5	G	R01	E36	242	LEV COIL		5		LEV-A-E		
6	G	R01	E33	529	DRAIN PAN		1				
7	G	T7W	E02	669	UNDER PANEL		1				
8	G	T7W	E11	689	CONTROLLER COVER		1				
9	G	R01	E07	527	DRAIN HOSE		1				
10	G	T7W	E93	310	CONTROLLER BOARD		1		B.C		
11	G	R01	H20	202	THERMISTOR-A		1		TH-A		
12	G	R01	H21	202	THERMISTOR-B		1		TH-B		
13	G	R01	H22	202	THERMISTOR-C		1		TH-C		
14	G	R01	H23	202	THERMISTOR-D		1		TH-D		
15	G	R01	H24	202	THERMISTOR-E		1		TH-E		
16	G	R01	E98	401	LEV ASSY		1				
17	G	R01	E09	419	HEADER-G ASSY		1				
18	G	R01	E01	660	PIPE COVER (SET)		1				
19	G	R01	E15	689	COVER-U		1				
20	G	T7W	E03	617	CONDUIT PLATE		1				
⑳	G	R01	E31	246	TERMINAL BLOCK	3P(S1, S2, S3)	1		TB2B		
㉑	G	R01	E20	246	TERMINAL BLOCK	3P(S1, S2, S3)	5		TB3A-E		
㉒	G	R01	E14	239	FUSE	250V 6.3A	1		F1		

1-4. FUNCTIONAL PARTS
BRANCH BOX : PAC-AKA31BC





Part numbers that are circled are not shown in the figure.

No.	ROHS	Part No.			Part Name	Specification	Q'ty/set	Remarks	Wiring Diagram Symbol	Recommended Q'ty
							PAC-AKA31BC			
1	G	R01	E22	641	TOP PANEL		1			
2	G	R01	E12	689	COVER-L		1			
3	G	R01	E14	689	COVER-G		1			
4	G	T7W	E35	661	SIDE PANEL		1			
5	G	R01	E36	242	LEV COIL		3		LEV-A-C	
6	G	R01	E33	529	DRAIN PAN		1			
7	G	T7W	E02	669	UNDER PANEL		1			
8	G	T7W	E11	689	CONTROLLER COVER		1			
9	G	R01	E07	527	DRAIN HOSE		1			
10	G	T7W	E93	310	CONTROLLER BOARD		1		B.C	
11	G	R01	H20	202	THERMISTOR-A		1		TH-A	
12	G	R01	H21	202	THERMISTOR-B		1		TH-B	
13	G	R01	H22	202	THERMISTOR-C		1		TH-C	
14	G	R01	E99	401	LEV ASSY		1			
15	G	R01	E10	419	HEADER-G ASSY		1			
16	G	R01	E01	660	PIPE COVER (SET)		1			
17	G	R01	E15	689	COVER-U		1			
18	G	T7W	E03	617	CONDUIT PLATE		1			
①9	G	R01	E31	246	TERMINAL BLOCK	3P(S1, S2, S3)	1		TB2B	
②0	G	R01	E20	246	TERMINAL BLOCK	3P(S1, S2, S3)	3		TB3A-C	
②1	G	R01	E14	239	FUSE	250V 6.3A	1		F1	

2

OPTIONAL PARTS

2-1. FOR OUTDOOR UNIT

DRAIN SOCKET

Part No.	PAC-SG61DS-E
----------	--------------

AIR OUTLET GUIDE

Part No.	PAC-SG59SG-E
----------	--------------

※ Need 2 pieces.

AIR GUIDE

Part No.	PAC-SH63AG-E
----------	--------------

※ Need 2 pieces.

DRAIN PAN

Part No.	PAC-SG64DP-E
----------	--------------

2-BRANCH PIPE (Joint) (In case of using 2-branch boxes)

Part No.	Connection method
MSDD-50AR-E	flare
MSDD-50BR-E	brazing

※ According to the connection method, you can choose the favorite one.

2-2. FOR BRANCH BOX

Different-diameter joint (Optional parts)

Part No.	Connected pipes diameter	Diameter A	Diameter B
	mm		
MAC-A454JP	φ9.52 → φ12.7	φ9.52	φ12.7
MAC-A455JP	φ12.7 → φ9.52	φ12.7	φ9.52
MAC-A456JP	φ12.7 → φ15.88	φ12.7	φ15.88
PAC-493PI	φ6.35 → φ9.52	φ6.35	φ9.52
PAC-SG76RJ-E	φ9.52 → φ15.88	φ9.52	φ15.88

<Reference>

Conversion formula

1/4 inch	φ6.35mm
3/8 inch	φ9.52mm
1/2 inch	φ12.7mm
5/8 inch	φ15.88mm
3/4 inch	φ19.05mm

