

Job Name:	
System Reference:	Date:



Outdoor Unit: MXZ-4C36NA

ACCESSORIES

- 3/8" x 1/2" Port Adapter (MAC-A454JP)
- 1/2" x 3/8" Port Adapter (MAC-A455JP)
- 1/2" x 5/8" Port Adapter (MAC-A456JP)
- 1/4" x 3/8" Port Adapter (PAC-493PI)
- 3/8" x 5/8" Port Adapter (PAC-SG76RJ)
- M-NET Adapter (PAC-IF01MNT-E)
- Base Heater (PAC-645BH-E)

(For data on specific indoor units, see the MXZ-C Technical and Service Manual.)

Specifications			Model Name
Unit Type			MXZ-4C36NA
Cooling* (Non-ducted / Ducted)	Rated Capacity	Btu/h	35,400 / 34,400
	Capacity Range	Btu/h	12,600-36,400 / 12,600-34,800
	Rated Total Input	W	3,760 / 3,940
Heating at 47°F* (Non-ducted / Ducted)	Rated Capacity	Btu/h	36,000 / 34,400
	Capacity Range	Btu/h	11,400-43,000 / 11,400-41,400
	Rated Total Input	W	3,020 / 3,100
Heating at 17°F* (Non-ducted/Ducted)	Rated Capacity	Btu/h	22,200 / 20,300
	Rated Total Input	W	3,340 / 3,450
Electrical Requirements	Power Supply	Voltage, Phase, Hertz	208 / 230V, 1-Phase, 60 Hz
	Recommended Fuse/Breaker Size	A	25
	MCA	A	22.1
Voltage	Indoor - Outdoor S1-S2	V	AC 208 / 230
	Indoor - Outdoor S2-S3	V	DC ±24
Compressor			INVERTER-driven Scroll Hermetic
Fan Motor (ECM)		F.L.A.	1.9
Sound Pressure Level	Cooling		54
	Heating	dB(A)	56
External Dimensions (H x W x D)		In (mm)	31-11/32 x 37-13/32 x 13 (796 x 950 x 330)
Net Weight		Lbs (kg)	137 (62)
External Finish			Munsell 3.0Y 7.8/1.1
Refrigerant Pipe Size O.D.	Liquid (High Pressure)	In (mm)	1/4 (12.7)
	Gas (Low Pressure)		A: 1/2 (6.35) ; B,C,D: 3/8 (9.52)
Max. Refrigerant Line Length		Ft (m)	230 (70)
Max. Piping Length for Each Indoor Unit		Ft (m)	82 (25)
Max. Refrigerant Pipe Height Difference	If IDU is Above ODU	Ft (m)	49 (15)
	If IDU is Below ODU	Ft (m)	49 (15)
Connection Method			Flared/Flared
Refrigerant			R410A

* Rating Conditions per AHRI Standard:

Cooling | Indoor: 80° F (27° C) DB / 67° F (19° C) WB
 Cooling | Outdoor: 95° F (35° C) DB / 23.9° C (75° F) WB

Heating at 47°F | Indoor: 70° F (21° C) DB / 60° F (16° C) WB
 Heating at 47°F | Outdoor: 47° F (8° C) DB / 43° F (6° C) WB

Heating at 17° F | Indoor: 70° F (21° C) DB
 Heating at 17° F | Outdoor: 17° F (-8° C) DB / 15° F (-9° C) WB

SPECIFICATIONS: MXZ-4C36NA, contd.

OPERATING RANGE

	Outdoor
Cooling	14 to 115° F (-10 to 46° C) DB
Heating	5 to 65° F (-15 to 18° C) WB

ENERGY EFFICIENCIES

Indoor Unit Type	SEER	EER	HSPF	COP @ 47°F	COP @ 17°F
Non-ducted	19.2	9.4	11.0	3.50	2.67
Ducted and Non-ducted	17.6	9.05	10.4	3.38	2.61
Ducted	16.0	8.7	9.8	3.25	2.54

NOTES:

- Minimum of two Indoor Units must be connected to the MXZ-4C36NA.
- Minimum installed capacity cannot be less than 12,000 Btu/h.
- Total connected capacity must not exceed 130% of outdoor unit capacity.
- System can operate with only one Indoor Unit turned on.
- Information provided at 208/230V.
- For Reference:
 - MXZ-C Technical & Service Manual for detailed specifications and additional information per Indoor Unit Combination.
 - MXZ Series Multi-Zone Indoor/Outdoor Combination Table for allowed unit combinations.

MVZ CONNECTION RULES:

- Only 1 MVZ may be used on any system.
- When an MVZ is connected, total connected capacity must be 100% or less.
- When an MVZ is connected, no P-Series indoor units can be used (PCA, PLA, or PEAD).

Notes:

MXZ-4C36NA OPERATIONAL PERFORMANCE

NON-DUCTED:

# of indoor unit	Total Nominal Capacity (x1000 Btu/h)	Total Indoor Unit Capacity (Btu/h)	Operational Performance for Indoor Unit Combinations (Unit A + Unit B + Unit C + Unit D)	Cooling Capacity Range (Btu/h)			
				Heating Capacity Range (Btu/h)			
				Unit A	Unit B	Unit C	Unit D
1	6	6,000	6	6,000	-	-	-
		7,400		7,400	-	-	-
1	9	9,000	9	9,000	-	-	-
		11,000		11,000	-	-	-
1	12	12,000	12	12,000	-	-	-
		14,400		14,400	-	-	-
1	15	14,000	15	14,000	-	-	-
		18,000		18,000	-	-	-
1	18	17,200	18	17,200	-	-	-
		21,600		21,600	-	-	-
1	24	22,500	24	22,500	-	-	-
		27,600		27,600	-	-	-
2	12	12,000	6 + 6	6,000	6,000	-	-
		14,800		7,400	7,400	-	-
2	15	15,000	6 + 9	6,000	9,000	-	-
		18,400		7,400	11,000	-	-
2	18	18,000	6 + 12	6,000	12,000	-	-
		22,000		7,500	14,500	-	-
2	18	18,000	9 + 9	9,000	9,000	-	-
		22,000		11,000	11,000	-	-
2	21	20,000	6 + 15	6,000	14,000	-	-
		25,400		7,400	18,000	-	-
2	21	20,000	9 + 12	8,600	11,400	-	-
		25,400		11,000	14,400	-	-
2	24	23,000	6 + 18	5,900	17,100	-	-
		28,000		7,100	20,900	-	-
2	24	23,000	9 + 15	9,000	14,000	-	-
		28,000		10,600	17,400	-	-
2	24	23,000	12 + 12	11,500	11,500	-	-
		28,000		14,000	14,000	-	-
2	27	25,800	9 + 18	8,900	16,900	-	-
		28,000		9,400	18,600	-	-
2	27	25,800	12 + 15	11,900	13,900	-	-
		28,000		12,400	15,600	-	-
2	30	28,000	6 + 24	5,900	22,100	-	-
		28,000		5,900	22,100	-	-
2	30	28,000	12 + 18	11,500	16,500	-	-
		28,000		11,200	16,800	-	-
2	30	28,000	15 + 15	14,000	14,000	-	-
		28,000		14,000	14,000	-	-
2	33	28,000	9 + 24	8,000	20,000	-	-
		28,000		8,000	20,000	-	-
2	33	28,000	15 + 18	12,600	15,400	-	-
		28,000		12,700	15,300	-	-
2	36	28,000	12 + 24	9,700	18,300	-	-
		28,000		9,600	18,400	-	-
2	36	28,000	18 + 18	14,000	14,000	-	-
		28,000		14,000	14,000	-	-
3	18	18,000	6 + 6 + 6	6,000	6,000	6,000	-
		22,200		7,400	7,400	7,400	-
3	21	21,000	6 + 6 + 9	6,000	6,000	9,000	-
		25,800		7,400	7,400	11,000	-
3	24	24,000	6 + 6 + 12	6,000	6,000	12,000	-
		29,200		7,400	7,400	14,400	-
3	27	26,000	6 + 6 + 15	6,000	6,000	14,000	-
		32,800		7,400	7,400	18,000	-
3	30	28,400	6 + 6 + 18	5,800	5,800	16,700	-
		32,800		6,700	6,700	19,500	-
3	36	32,000	6 + 6 + 24	5,600	5,600	20,900	-
		32,800		5,700	5,700	21,400	-

MXZ-4C36NA OPERATIONAL PERFORMANCE, contd.

NON-DUCTED:

# of indoor unit	Total Nominal Capacity (x1000 Btu/h)	Total Indoor Unit Capacity (Btu/h)	Operational Performance for Indoor Unit Combinations (Unit A + Unit B + Unit C + Unit D)	Cooling Capacity Range (Btu/h)			
				Heating Capacity Range (Btu/h)			
				Unit A	Unit B	Unit C	Unit D
3	24	24,000	6 + 9 + 9	6,000	9,000	9,000	-
		29,200		7,300	10,900	10,900	-
3	27	26,000	6 + 9 + 12	5,800	8,700	11,600	-
		32,800		7,400	11,000	14,400	-
3	30	28,400	6 + 9 + 15	5,900	8,800	13,700	-
		32,800		6,700	9,900	16,200	-
3	33	32,000	6 + 9 + 18	6,000	8,900	17,100	-
		32,800		6,100	9,000	17,700	-
3	39	32,000	6 + 9 + 24	5,100	7,700	19,200	-
		32,800		5,300	7,800	19,700	-
3	30	28,400	6 + 12 + 12	5,700	11,400	11,400	-
		32,800		6,700	13,000	13,000	-
3	33	32,000	6 + 12 + 15	6,000	12,000	14,000	-
		32,800		6,100	11,900	14,800	-
3	36	32,000	6 + 12 + 18	5,500	10,900	15,600	-
		32,800		5,600	10,900	16,300	-
3	42	32,000	6 + 12 + 24	4,700	9,500	17,800	-
		32,800		4,900	9,600	18,300	-
3	36	32,000	6 + 15 + 15	5,600	13,200	13,200	-
		32,800		5,600	13,600	13,600	-
3	39	32,000	6 + 15 + 18	5,200	12,000	14,800	-
		32,800		5,200	12,600	15,100	-
3	42	32,000	6 + 18 + 18	4,800	13,600	13,600	-
		32,800		4,800	14,000	14,000	-
3	27	26,000	9 + 9 + 9	8,700	8,700	8,700	-
		32,800		10,900	10,900	10,900	-
3	30	28,400	9 + 9 + 12	8,500	8,500	11,400	-
		32,800		9,900	9,900	13,000	-
3	33	32,000	9 + 9 + 15	9,000	9,000	14,000	-
		32,800		9,000	9,000	14,800	-
3	36	32,000	9 + 9 + 18	8,200	8,200	15,600	-
		32,800		8,300	8,300	16,200	-
3	42	32,000	9 + 9 + 24	7,100	7,100	17,800	-
		32,800		7,300	7,300	18,300	-
3	33	32,000	9 + 12 + 12	8,700	11,600	11,600	-
		32,800		9,100	11,900	11,900	-
3	36	32,000	9 + 12 + 15	8,200	11,000	12,800	-
		32,800		8,300	10,900	13,600	-
3	39	32,000	9 + 12 + 18	7,500	10,100	14,400	-
		32,800		7,700	10,000	15,100	-
3	39	32,000	9 + 15 + 15	7,800	12,100	12,100	-
		32,800		7,700	12,600	12,600	-
3	42	32,000	9 + 15 + 18	7,200	11,100	13,700	-
		32,800		7,100	11,700	14,000	-
3	36	32,000	12 + 12 + 12	10,700	10,700	10,700	-
		32,800		10,900	10,900	10,900	-
3	39	32,000	12 + 12 + 15	10,100	10,100	11,800	-
		32,800		10,100	10,100	12,600	-
3	42	32,000	12 + 12 + 18	9,300	9,300	13,400	-
		32,800		9,400	9,400	14,100	-
3	42	32,000	12 + 15 + 15	9,600	11,200	11,200	-
		32,800		9,400	11,700	11,700	-
4	24	24,000	6 + 6 + 6 + 6	6,000	6,000	6,000	6,000
		29,600		7,400	7,400	7,400	7,400
4	27	27,000	6 + 6 + 6 + 9	6,000	6,000	6,000	9,000
		33,200		7,400	7,400	7,400	11,000
4	30	30,000	6 + 6 + 6 + 12	6,000	6,000	6,000	12,000
		35,800		7,200	7,200	7,200	14,100
4	33	32,000	6 + 6 + 6 + 15	6,000	6,000	6,000	14,000
		35,800		6,600	6,600	6,600	16,000

MXZ-4C36NA OPERATIONAL PERFORMANCE, contd.

NON-DUCTED:

# of indoor unit	Total Nominal Capacity (x1000 Btu/h)	Total Indoor Unit Capacity (Btu/h)	Operational Performance for Indoor Unit Combinations (Unit A + Unit B + Unit C + Unit D)	Cooling Capacity Range (Btu/h)			
				Heating Capacity Range (Btu/h)			
				Unit A	Unit B	Unit C	Unit D
4	36	32,000	6 + 6 + 6 + 18	5,500	5,500	5,500	15,600
		32,800		5,500	5,500	5,500	16,200
4	42	32,000	6 + 6 + 6 + 24	4,700	4,700	4,700	17,800
		32,800		4,900	4,900	4,900	18,200
4	30	30,000	6 + 6 + 9 + 9	6,000	6,000	9,000	9,000
		35,800		7,200	7,200	10,700	10,700
4	33	32,000	6 + 6 + 9 + 12	5,800	5,800	8,700	11,600
		35,800		6,600	6,600	9,800	12,800
4	36	35,400	6 + 6 + 9 + 15	6,100	6,100	9,100	14,200
		36,000		6,100	6,100	9,000	14,800
4	39	36,000	6 + 6 + 9 + 18	5,700	5,700	8,500	16,200
		36,000		5,600	5,600	8,400	16,400
4	36	35,400	6 + 6 + 12 + 12	5,900	5,900	11,800	11,800
		36,000		6,100	6,100	11,900	11,900
4	39	36,000	6 + 6 + 12 + 15	5,700	5,700	11,400	13,300
		36,000		5,600	5,600	11,000	13,700
4	42	36,000	6 + 6 + 12 + 18	5,200	5,200	10,500	15,000
		36,000		5,200	5,200	10,200	15,300
4	42	36,000	6 + 6 + 15 + 15	5,400	5,400	12,600	12,600
		36,000		5,200	5,200	12,800	12,800
4	33	32,000	6 + 9 + 9 + 9	5,800	8,700	8,700	8,700
		35,800		6,600	9,700	9,700	9,700
4	36	35,400	6 + 9 + 9 + 12	5,900	8,900	8,900	11,800
		36,000		6,100	9,000	9,000	11,800
4	39	36,000	6 + 9 + 9 + 15	5,700	8,500	8,500	13,300
		36,000		5,600	8,400	8,400	13,700
4	42	36,000	6 + 9 + 9 + 18	5,200	7,900	7,900	15,000
		36,000		5,200	7,800	7,800	15,200
4	39	36,000	6 + 9 + 12 + 12	5,500	8,300	11,100	11,100
		36,000		5,600	8,400	11,000	11,000
4	42	36,000	6 + 9 + 12 + 15	5,300	7,900	10,500	12,300
		36,000		5,200	7,800	10,200	12,800
4	42	36,000	6 + 12 + 12 + 12	5,100	10,300	10,300	10,300
		36,000		5,300	10,200	10,200	10,200
4	36	35,400	9 + 9 + 9 + 9	8,900	8,900	8,900	8,900
		36,000		9,000	9,000	9,000	9,000
4	39	36,000	9 + 9 + 9 + 12	8,300	8,300	8,300	11,100
		36,000		8,400	8,400	8,400	10,900
4	42	36,000	9 + 9 + 9 + 15	7,900	7,900	7,900	12,300
		36,000		7,800	7,800	7,800	12,700
4	42	36,000	9 + 9 + 12 + 12	7,700	7,700	10,300	10,300
		36,000		7,800	7,800	10,200	10,200

MXZ-4C36NA OPERATIONAL PERFORMANCE, contd.

DUCTED:

# of indoor unit	Total Nominal Capacity (x1000 Btu/h)	Total Indoor Unit Capacity (Btu/h)	Operational Performance for Indoor Unit Combinations (Unit A + Unit B + Unit C + Unit D)	Cooling Capacity Range (Btu/h)			
				Heating Capacity Range (Btu/h)			
				Unit A	Unit B	Unit C	Unit D
1	9	9,000	9	9,000	-	-	-
		10,900		10,900	-	-	-
1	12	12,000	12	12,000	-	-	-
		13,600		13,600	-	-	-
1	15	15,000	15	15,000	-	-	-
		18,000		18,000	-	-	-
1	18	17,200	18	17,200	-	-	-
		21,600		21,600	-	-	-
1	24	24,000	24	24,000	-	-	-
		26,000		26,000	-	-	-
2	18	18,000	9 + 9	9,000	9,000	-	-
		21,800		10,900	10,900	-	-
2	21	21,000	9 + 12	9,000	12,000	-	-
		24,500		10,900	13,600	-	-
2	24	24,000	9 + 15	9,000	15,000	-	-
		27,200		10,300	16,900	-	-
2	27	26,200	9 + 18	9,000	17,200	-	-
		28,000		9,400	18,600	-	-
2	33	28,000	9 + 24	7,600	20,400	-	-
		28,000		8,300	19,700	-	-
2	24	24,000	12 + 12	12,000	12,000	-	-
		27,200		13,600	13,600	-	-
2	27	26,200	12 + 15	11,600	14,600	-	-
		28,000		12,100	15,900	-	-
2	30	28,000	12 + 18	11,500	16,500	-	-
		28,000		10,800	17,200	-	-
2	36	28,000	12 + 24	9,300	18,700	-	-
		28,000		9,600	18,400	-	-
2	30	28,000	15 + 15	14,000	14,000	-	-
		28,000		14,000	14,000	-	-
2	33	28,000	15 + 18	13,000	15,000	-	-
		28,000		12,700	15,300	-	-
2	36	28,000	18 + 18	14,000	14,000	-	-
		28,000		14,000	14,000	-	-
3	27	27,000	9 + 9 + 9	9,000	9,000	9,000	-
		32,700		10,900	10,900	10,900	-
3	30	30,000	9 + 9 + 12	9,000	9,000	12,000	-
		32,700		10,100	10,100	12,600	-
3	33	32,000	9 + 9 + 15	8,700	8,700	14,500	-
		32,700		9,000	9,000	14,800	-
3	36	32,000	9 + 9 + 18	8,200	8,200	15,600	-
		32,700		8,200	8,200	16,300	-
3	42	32,000	9 + 9 + 24	6,900	6,900	18,300	-
		32,700		7,500	7,500	17,800	-
3	33	32,000	9 + 12 + 12	8,700	11,600	11,600	-
		32,700		9,400	11,700	11,700	-
3	36	32,000	9 + 12 + 15	8,000	10,700	13,300	-
		32,700		8,400	10,500	13,800	-
3	36	32,000	12 + 12 + 12	10,700	10,700	10,700	-
		32,700		10,900	10,900	10,900	-
3	39	32,000	9 + 12 + 18	7,500	10,100	14,400	-
		32,700		7,700	9,600	15,300	-
3	39	32,000	9 + 15 + 15	7,400	12,300	12,300	-
		32,700		7,600	12,600	12,600	-
3	39	32,000	12 + 12 + 15	9,800	9,800	12,300	-
		32,700		9,800	9,800	13,000	-
3	42	32,000	9 + 15 + 18	7,000	11,700	13,400	-
		32,700		7,100	11,700	14,000	-
3	42	32,000	12 + 12 + 18	9,300	9,300	13,400	-
		32,700		9,100	9,100	14,500	-

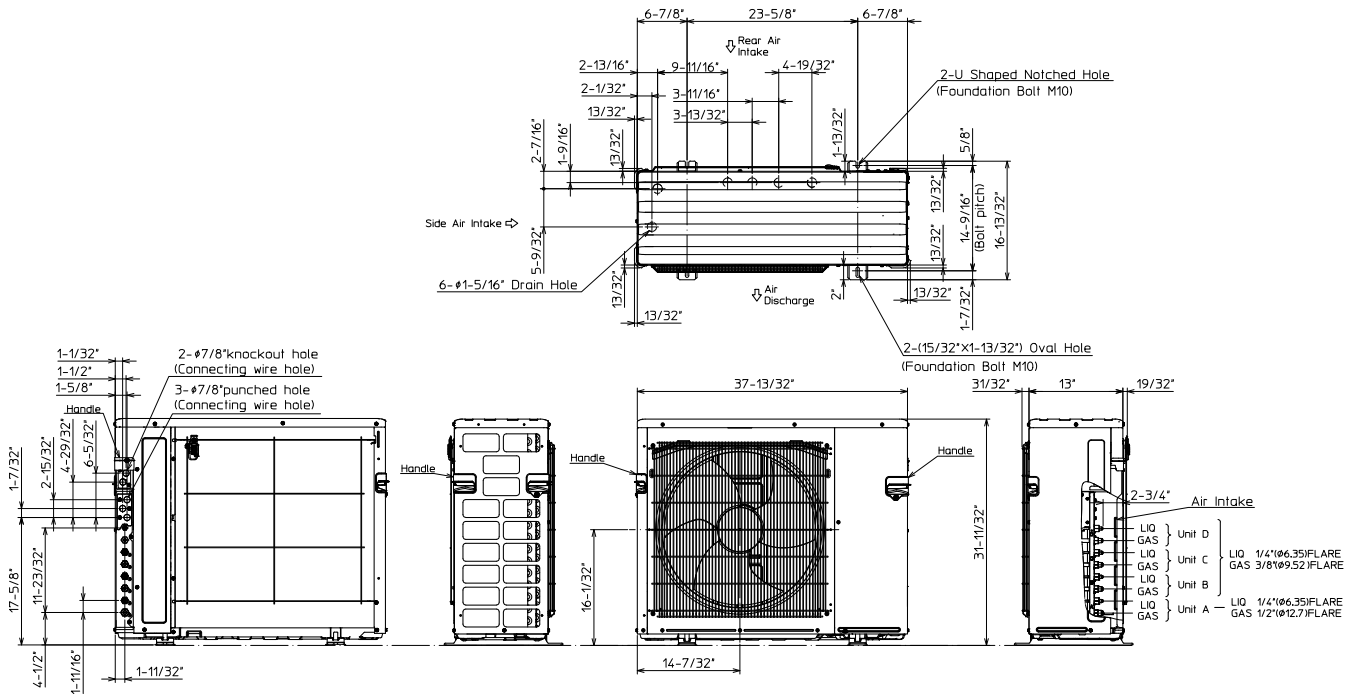
MXZ-4C36NA OPERATIONAL PERFORMANCE, contd.

DUCTED:

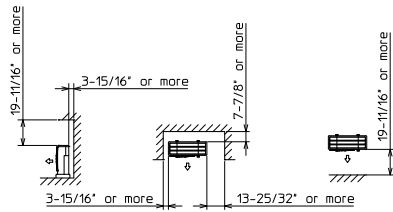
# of indoor unit	Total Nominal Capacity (x1000 Btu/h)	Total Indoor Unit Capacity (Btu/h)	Operational Performance for Indoor Unit Combinations (Unit A + Unit B + Unit C + Unit D)	Cooling Capacity Range (Btu/h)			
				Heating Capacity Range (Btu/h)			
				Unit A	Unit B	Unit C	Unit D
3	42	32,000	12 + 15 + 15	9,100	11,400	11,400	-
		32,700		9,000	11,900	11,900	-
4	36	34,400	9 + 9 + 9 + 9	8,600	8,600	8,600	8,600
		34,400		8,600	8,600	8,600	8,600
4	39	34,800	9 + 9 + 9 + 12	8,000	8,000	8,000	10,700
		34,800		8,200	8,200	8,200	10,200
4	42	35,200	9 + 9 + 9 + 15	7,500	7,500	7,500	12,600
		35,200		7,600	7,600	7,600	12,500
4	42	35,200	9 + 9 + 12 + 12	7,500	7,500	10,100	10,100
		35,200		7,800	7,800	9,800	9,800

DIMENSIONS: MXZ-4C36NA

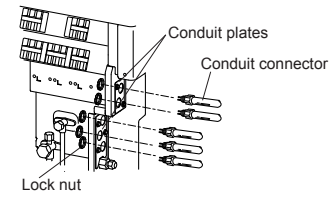
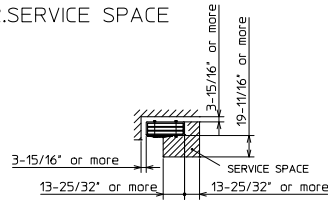
Unit: inch (mm)



1.FREE SPACE



2.SERVICE SPACE



COOLING & HEATING

1340 Satellite Boulevard, Suwanee, GA 30024
 Toll Free: 800-433-4822 www.mehvac.com

