

Job Name:	
System Reference:	Date:



Outdoor Unit: MXZ-3C24NA

### ACCESSORIES

- 3/8" x 1/2" Port Adapter (MAC-A454JP-E)
- 1/2" x 3/8" Port Adapter (MAC-A455JP-E)
- 1/2" x 5/8" Port Adapter (MAC-A456JP-E)
- 1/4" x 3/8" Port Adapter (PAC-493PI)
- 3/8" x 5/8" Port Adapter (PAC-SG76RJ-E)
- M-NET Adapter (PAC-IF01MNT-E)
- Base Heater (PAC-645BH-E)

(For data on specific indoor units, see the MXZ-C Technical and Service Manual.)

Specifications			Model Name
Unit Type			MXZ-3C30NA
<b>Cooling*</b> (Non-ducted / Ducted)	Rated Capacity	Btu/h	28,400 / 27,400
	Capacity Range	Btu/h	12,600-28,400 / 12,600-27,400
	Rated Total Input	W	2,680 / 2,860
<b>Heating at 47°F*</b> (Non-ducted / Ducted)	Rated Capacity	Btu/h	28,600 / 27,600
	Capacity Range	Btu/h	11,400-36,000 / 11,400-35,000
	Rated Total Input	W	2,150 / 2,220
<b>Heating at 17°F*</b> (Non-ducted/Ducted)	Rated Capacity	Btu/h	16,000 / 15,100
	Rated Total Input	W	2,120 / 2,140
<b>Electrical Requirements</b>	Power Supply	Voltage, Phase, Hertz	208 / 230V, 1-Phase, 60 Hz
	Recommended Fuse/Breaker Size	A	25
	MCA	A	22.1
<b>Voltage</b>	Indoor - Outdoor S1-S2	V	AC 208 / 230
	Indoor - Outdoor S2-S3	V	DC ±24
<b>Compressor</b>			INVERTER-driven Scroll Hermetic
<b>Fan Motor (ECM)</b>		F.L.A.	1.9
<b>Sound Pressure Level</b>	Cooling	dB(A)	52
	Heating		56
<b>External Dimensions (H x W x D)</b>		In (mm)	31-11/32 x 37-13/32 x 13 (796 x 950 x 330)
<b>Net Weight</b>		Lbs (kg)	135 (61)
<b>External Finish</b>			Munsell 3.0Y 7.8/1.1
<b>Refrigerant Pipe Size O.D.</b>	Liquid (High Pressure)	In (mm)	1/4 (12.7)
	Gas (Low Pressure)		A: 1/2 (6.35) ; B,C: 3/8 (9.52)
<b>Max. Refrigerant Line Length</b>		Ft (m)	230 (70)
<b>Max. Piping Length for Each Indoor Unit</b>		Ft (m)	82 (25)
<b>Max. Refrigerant Pipe Height Difference</b>	If IDU is Above ODU	Ft (m)	49 (15)
	If IDU is Below ODU		49 (15)
<b>Connection Method</b>			Flared/Flared
<b>Refrigerant</b>			R410A

\* Rating Conditions per AHRI Standard:

Cooling | Indoor: 80° F (27° C) DB / 67° F (19° C) WB  
Cooling | Outdoor: 95° F (35° C) DB / 23.9° C (75° F) WB

Heating at 47°F | Indoor: 70° F (21° C) DB / 60° F (16° C) WB  
Heating at 47°F | Outdoor: 47° F (8° C) DB / 43° F (6° C) WB

Heating at 17° F | Indoor: 70° F (21° C) DB  
Heating at 17° F | Outdoor: 17° F (-8° C) DB / 15° F (-9° C) WB

# SPECIFICATIONS: MXZ-3C30NA, contd.

## OPERATING RANGE

	Outdoor
Cooling	14 to 115° F (-10 to 46° C) DB
Heating	5 to 65° F (-15 to 18° C) WB

## ENERGY EFFICIENCIES

Indoor Unit Type	SEER	EER	HSPF	COP @ 47°F	COP @ 17°F
<b>Non-ducted (06 + 06 + 09)</b>	19.0	10.6	10.6	3.90	2.77
<b>Ducted and Non-ducted</b>	17.6	10.1	10.1	3.77	2.78
<b>Ducted (09 + 09 + 09)</b>	16.2	9.6	9.6	3.64	2.78

### NOTES:

- Minimum of two Indoor Units must be connected to the MXZ-3C30NA.
- Minimum installed capacity cannot be less than 12,000 Btu/h.
- Total connected capacity must not exceed 130% of outdoor unit capacity.
- System can operate with only one Indoor Unit turned on.
- Information provided at 208/230V.
- For Reference:
  - MXZ-C Technical & Service Manual for detailed specifications and additional information per Indoor Unit Combination.
  - MXZ Series Multi-Zone Indoor/Outdoor Combination Table for allowed unit combinations.

### MVZ CONNECTION RULES:

- Only 1 MVZ may be used on any system.
- When an MVZ is connected, total connected capacity must be 100% or less.
- When an MVZ is connected, no P-Series indoor units can be used (PCA, PLA, or PEAD).

Notes:

# MXZ-3C30NA OPERATIONAL PERFORMANCE

**NON-DUCTED:**

# of indoor unit	Total Nominal Capacity (x1000 Btu/h)	Total Indoor Unit Capacity (Btu/h)	Operational Performance for Indoor Unit Combinations (Unit A + Unit B + Unit C)	Cooling Capacity Range (Btu/h)		
				Heating Capacity Range (Btu/h)		
				Unit A	Unit B	Unit C
1	6	6,000	6	6,000	-	-
		7,400		7,400	-	-
1	9	9,000	9	9,000	-	-
		11,000		11,000	-	-
1	12	12,000	12	12,000	-	-
		14,400		14,400	-	-
1	15	14,000	15	14,000	-	-
		18,000		18,000	-	-
1	18	17,200	18	17,200	-	-
		21,600		21,600	-	-
1	24	22,500	24	22,500	-	-
		27,600		27,600	-	-
2	12	12,000	6 + 6	6,000	6,000	-
		14,800		7,400	7,400	-
2	15	15,000	6 + 9	6,000	9,000	-
		18,400		7,400	11,000	-
2	18	18,000	6 + 12	6,000	12,000	-
		22,000		7,500	14,500	-
2	18	20,000	9 + 9	10,000	10,000	-
		22,000		11,000	11,000	-
2	21	20,000	6 + 15	6,000	14,000	-
		25,400		7,400	18,000	-
2	21	20,000	9 + 12	8,600	11,400	-
		25,400		11,000	14,400	-
2	24	23,000	6 + 18	5,900	17,100	-
		27,600		7,000	20,600	-
2	24	23,000	9 + 15	9,000	14,000	-
		27,600		10,500	17,100	-
2	24	23,000	12 + 12	11,500	11,500	-
		27,600		13,800	13,800	-
2	27	25,800	9 + 18	8,900	16,900	-
		27,600		9,300	18,300	-
2	27	25,800	12 + 15	11,900	13,900	-
		27,600		12,300	15,300	-
2	30	27,200	12 + 18	11,200	16,000	-
		27,600		11,000	16,600	-
2	30	27,200	15 + 15	13,600	13,600	-
		27,600		13,800	13,800	-
2	30	27,200	6 + 24	5,700	21,500	-
		27,600		5,800	21,800	-
2	33	27,200	9 + 24	7,800	19,400	-
		27,600		7,900	19,700	-
2	33	27,200	15 + 18	12,200	15,000	-
		27,600		12,500	15,100	-
2	36	27,200	18 + 18	13,600	13,600	-
		27,600		13,800	13,800	-
2	36	27,200	12 + 24	9,500	17,700	-
		27,600		9,500	18,100	-
3	18	18,000	6 + 6 + 6	9,000	9,000	-
		22,200		7,400	7,400	7,400
3	21	21,000	6 + 6 + 9	6,000	6,000	9,000
		25,800		7,400	7,400	11,000
3	24	24,000	6 + 6 + 12	6,000	6,000	12,000
		28,400		7,200	7,200	14,000
3	24	24,000	6 + 9 + 9	6,000	9,000	9,000
		28,400		7,100	10,600	10,600
3	27	26,000	6 + 6 + 15	6,000	6,000	14,000
		28,400		6,400	6,400	15,600
3	27	26,000	6 + 9 + 12	5,800	8,700	11,600
		28,400		6,400	9,500	12,500

# MXZ-3C30NA OPERATIONAL PERFORMANCE, contd.

**NON-DUCTED:**

# of indoor unit	Total Nominal Capacity (x1000 Btu/h)	Total Indoor Unit Capacity (Btu/h)	Operational Performance for Indoor Unit Combinations (Unit A + Unit B + Unit C)	Cooling Capacity Range (Btu/h)		
				Heating Capacity Range (Btu/h)		
				Unit A	Unit B	Unit C
3	27	26,000	9 + 9 + 9	8,700	8,700	8,700
		28,400		9,500	9,500	9,500
3	30	28,400	6 + 6 + 18	5,800	5,800	16,700
		28,600		5,800	5,800	17,000
3	30	28,400	6 + 9 + 15	5,900	8,800	13,700
		28,600		5,800	8,600	14,100
3	30	28,400	6 + 12 + 12	5,700	11,400	11,400
		28,600		5,800	11,400	11,400
3	30	28,400	9 + 9 + 12	8,500	8,500	11,400
		28,600		8,600	8,600	11,300
3	33	29,600	6 + 9 + 18	5,500	8,300	15,800
		29,600		5,500	8,100	16,000
3	33	29,600	6 + 12 + 15	5,600	11,100	13,000
		29,600		5,500	10,700	13,400
3	33	29,600	9 + 9 + 15	8,300	8,300	13,000
		29,600		8,100	8,100	13,300
3	33	29,600	9 + 12 + 12	8,100	10,800	10,800
		29,600		8,200	10,700	10,700
3	36	30,000	6 + 6 + 24	5,200	5,200	19,600
		30,000		5,200	5,200	19,500
3	36	30,000	6 + 12 + 18	5,100	10,200	14,700
		30,000		5,100	10,000	14,900
3	36	30,000	12 + 12 + 12	10,000	10,000	10,000
		30,000		10,000	10,000	10,000
3	36	30,000	6 + 15 + 15	5,300	12,400	12,400
		30,000		5,100	12,400	12,400
3	36	30,000	9 + 9 + 18	7,700	7,700	14,700
		30,000		7,600	7,600	14,900
3	36	30,000	9 + 12 + 15	7,700	10,300	12,000
		30,000		7,600	10,000	12,400

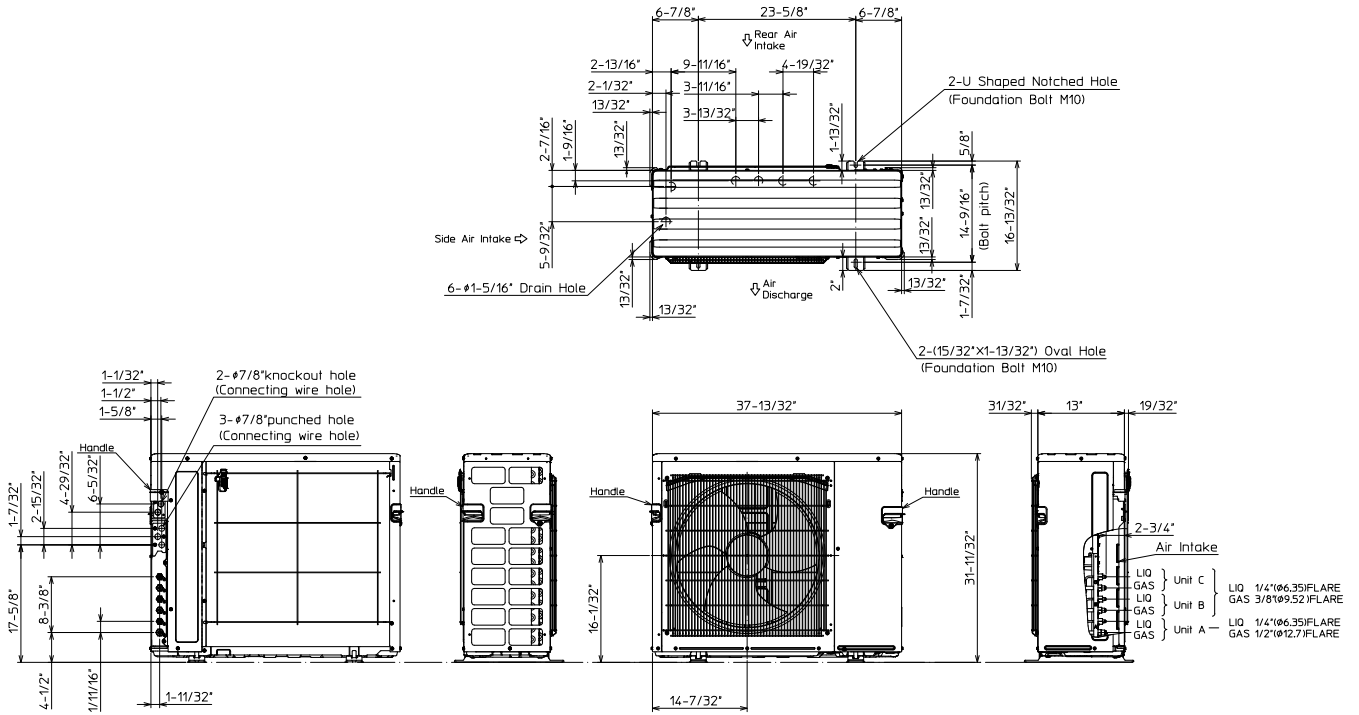
# MXZ-3C30NA OPERATIONAL PERFORMANCE, contd.

**DUCTED:**

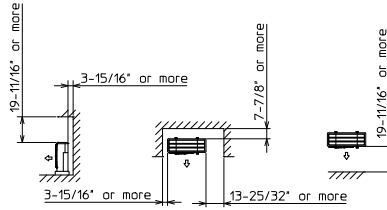
# of indoor unit	Total Nominal Capacity (x1000 Btu/h)	Total Indoor Unit Capacity (Btu/h)	Operational Performance for Indoor Unit Combinations (Unit A + Unit B + Unit C)	Cooling Capacity Range (Btu/h)		
				Heating Capacity Range (Btu/h)		
				Unit A	Unit B	Unit C
1	9	9,000	9	9,000	-	-
		10,900		10,900	-	-
1	12	12,000	12	12,000	-	-
		13,600		13,600	-	-
1	15	15,000	15	15,000	-	-
		18,000		18,000	-	-
1	18	17,200	18	17,200	-	-
		21,600		21,600	-	-
1	24	24,000	24	24,000	-	-
		26,000		26,000	-	-
2	18	18,000	9 + 9	9,000	9,000	-
		21,800		10,900	10,900	-
2	21	21,000	9 + 12	9,000	12,000	-
		24,500		10,900	13,600	-
2	24	24,000	9 + 15	9,000	15,000	-
		27,200		10,300	16,900	-
2	27	26,200	9 + 18	9,000	17,200	-
		27,400		9,200	18,200	-
2	33	27,200	9 + 24	7,400	19,800	-
		27,400		8,100	19,300	-
2	24	24,000	12 + 12	12,000	12,000	-
		27,200		13,600	13,600	-
2	27	26,200	12 + 15	11,600	14,600	-
		27,400		11,800	15,600	-
2	30	27,200	12 + 18	11,200	16,000	-
		27,400		10,600	16,800	-
2	36	27,200	12 + 24	9,100	18,100	-
		27,400		9,400	18,000	-
2	30	27,200	15 + 15	13,600	13,600	-
		27,400		13,700	13,700	-
2	33	27,200	15 + 18	12,700	14,500	-
		27,400		12,500	14,900	-
2	36	27,200	18 + 18	13,600	13,600	-
		27,400		13,700	13,700	-
3	27	27,000	9 + 9 + 9	9,000	9,000	9,000
		27,400		9,100	9,100	9,100
3	30	27,400	9 + 9 + 12	8,200	8,200	11,000
		27,600		8,500	8,500	10,600
3	33	27,800	9 + 9 + 15	7,600	7,600	12,600
		27,800		7,600	7,600	12,600
3	33	27,800	9 + 12 + 12	7,600	10,100	10,100
		27,800		8,000	9,900	9,900
3	36	28,200	9 + 9 + 18	7,200	7,200	13,800
		28,000		7,000	7,000	13,900
3	36	28,200	9 + 12 + 15	7,100	9,400	11,800
		28,000		7,200	9,000	11,900
3	36	28,200	12 + 12 + 12	9,400	9,400	9,400
		28,000		9,300	9,300	9,300

# DIMENSIONS: MXZ-3C30NA

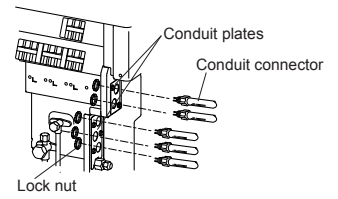
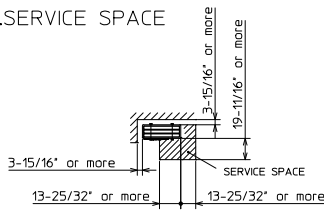
Unit: inch (mm)



### 1. FREE SPACE



### 2. SERVICE SPACE



COOLING & HEATING

1340 Satellite Boulevard, Suwanee, GA 30024  
 Toll Free: 800-433-4822 www.mehvac.com

