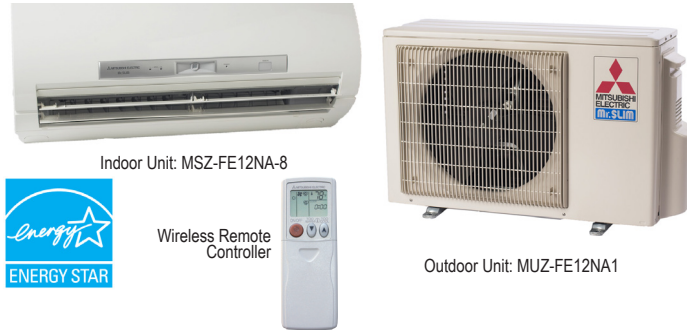


SUBMITTAL DATA: MSZ-FE12NA-8 & MUZ-FE12NA1
 12,000 BTU/H WALL-MOUNTED HEAT PUMP SYSTEM

Job Name:	Location:	Date:
Purchaser:	Engineer:	
Submitted to:	For <input type="checkbox"/> Reference <input type="checkbox"/> Approval <input type="checkbox"/> Construction	
System Designation:	Schedule No.:	


GENERAL FEATURES

- Highly energy-efficient system that features 92% heating capacity at 5°F, 75% at -4°F, and 58% at -13°F
- Updated sleek, compact indoor unit design
- Includes Standard, Platinum Deodorizing, and Anti-allergy Enzyme filters for a complete air purifying system
- “Powerful Mode” function permits system to temporarily run at a lower/higher temperature with an increased fan speed, which quickly brings the room to the optimum comfort level
- Integrated i-see Sensor automatically adjusts the unit’s operation according to temperature differences detected between the floor and the intake air, ensuring optimum comfort and energy usage
- Hand-held Wireless Remote Controller
- Base heater is available as an option
- Limited warranty: five years parts and seven years compressors

ACCESSORIES
Outdoor Unit

- Base Heater (MAC-640BH-U)
- Drain Socket (MAC-851DS)

Indoor Unit

- Condensate Pump (SI3100-230; 230V)
- Replacement Platinum Deodorizing Filter (MAC-308FT)
- Replacement Anti-allergy Enzyme Filter (MAC-418FT; MERV 8)

Controller Options

- Wireless Remote Controller Kit (MHK1)*
- Portable Central Controller (MCCH1)*
- Outdoor Air Sensor (MOS1)*

*See Submittal for information on each option.

- Wall-mounted Wired Controller (PAR-21MAA; req. MAC-333IF)
- System Control Interface (MAC-333IF)
- Remote Temperature Sensor (M21-JKO-307)
- Lockdown Bracket for Hand-held Controller (RCMKP1CB)



SPECIFICATIONS: MSZ-FE12NA-8 & MUZ-FE12NA1

Cooling*

Rated Capacity12,000 Btu/h
 Minimum Capacity2,800 Btu/h
 SEER23.0 Btu/h/W
 Total Input930 W

Heating at 47° F*

Rated Capacity13,600 Btu/h
 Minimum Capacity3,000 Btu/h
 HSPF10.6 Btu/h/W
 Total Input950 W

Heating at 17° F*

Rated Capacity7,900 Btu/h
 Rated Total Input750 W
 Maximum Capacity**13,600 Btu/h
 Maximum Total Input1,780 W

Heating at 5° F

Maximum Capacity**12,500 Btu/h

* Rating Conditions per AHRI Standard

Cooling | Indoor: 80° F (27° C) DB / 67° F (19° C) WB
 Cooling | Outdoor: 95° F (35° C) DB / 75° F (24° C) WB
 Heating at 47°F | Indoor: 70° F (21° C) DB / 60° F (16° C) WB
 Heating at 47°F | Outdoor: 47° F (8° C) DB / 43° F (6° C) WB
 Heating at 17° F | Indoor: 70° F (21° C) DB / 60° F (16° C) WB
 Heating at 17° F | Outdoor: 17° F (-8° C) DB / 15° F (-9° C) WB
 Heating at 5° F | Indoor: 70° F (21° C) DB / 60° F (16° C) WB
 Heating at 5° F | Outdoor: 5° F (-15° C) DB / 5° F (-15° C) WB

**Maximum Capacity is at full speed and performance for INVERTER-driven System.

Electrical Requirements

Power Supply208 / 230V, 1-Phase, 60 Hz
 Breaker Size15 A

Voltage

Indoor - Outdoor S1-S2 AC 208 / 230V
 Indoor - Outdoor S2-S3 DC +/- 24V
 Remote Controller MHK1 DC12 V
 PAR-21MAA DC 12V
 PAR-FL32MA DC 3V

OPERATING RANGE

		Indoor Intake Air Temp.	Outdoor Intake Air Temp.
Cooling	Maximum	90° F (32° C) DB 73° F (23° C) WB	115° F (46° C) DB
	Minimum	67° F (19° C) DB 57° F (14° C) WB	14° F (-10° C) DB
Heating	Maximum	80° F (27° C) DB 67° F (19° C) WB	75° F (24° C) DB, 65° F (18° C) WB
	Minimum	70° F (21° C) DB 60° F (16° C) WB	-13° F (-25° C) DB, -15° F (-26° C) WB**

** System cuts out at -18°F (-28°C) to avoid thermistor error, but recovers from cutout operation and automatically restarts at -13° F (-25° C).

Indoor Unit

MCA1 A
 Blower Motor (ECM)0.76 F.L.A.
 Airflow

Cooling (Lo - Med - Hi - Powerful)162 - 226 - 381 - 410 Dry CFM
 144 - 202 - 350 - 367 Wet CFM

Heating (Lo - Med - Hi - Powerful) . . .166 - 240 - 399 - 420 Dry CFM
 Sound Pressure Level

Cooling (Lo - Med - Hi - Powerful)22 - 33 - 43 - 45 dB(A)
 Heating (Lo - Med - Hi - Powerful)22 - 33 - 43 - 44 dB(A)

DIMENSIONS	UNIT INCHES / MM
W	31-7/16 / 799
D	10-1/8 / 257
H	11-5/8 / 295

Weight27 lbs. / 12 kg
 External FinishMunsell No. 1.0Y 9.2 / 0.2
 Field Drainpipe Size O.D.5/8" / 15.88 mm
 Remote ControllerWireless

Outdoor Unit

Compressor DC Inverter-driven Twin Rotary
 MCA12 A

Fan Motor (ECM)0.56 F.L.A.
 Sound Pressure Level

Cooling48 dB(A)
 Heating49 dB(A)

DIMENSIONS	INCHES / MM
W	31-1/2 / 800
D	11-1/4 / 286
H	21-5/8 / 549

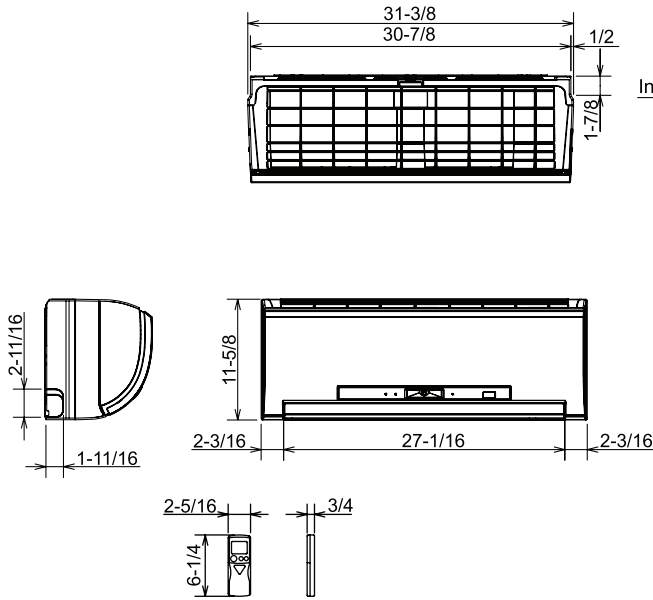
Weight80 lbs. / 36 kg
 External FinishMunsell No. 3.0Y 7.8 / 1.1
 Refrigerant Type R410A
 Refrigerant Pipe Size O.D.
 Gas Side3/8" / 9.52 mm
 Liquid Side1/4" / 6.35 mm
 Max. Refrigerant Pipe Length65' / 20 m
 Max. Refrigerant Pipe Height Difference40' / 12 m
 Connection MethodFlared

Notes:

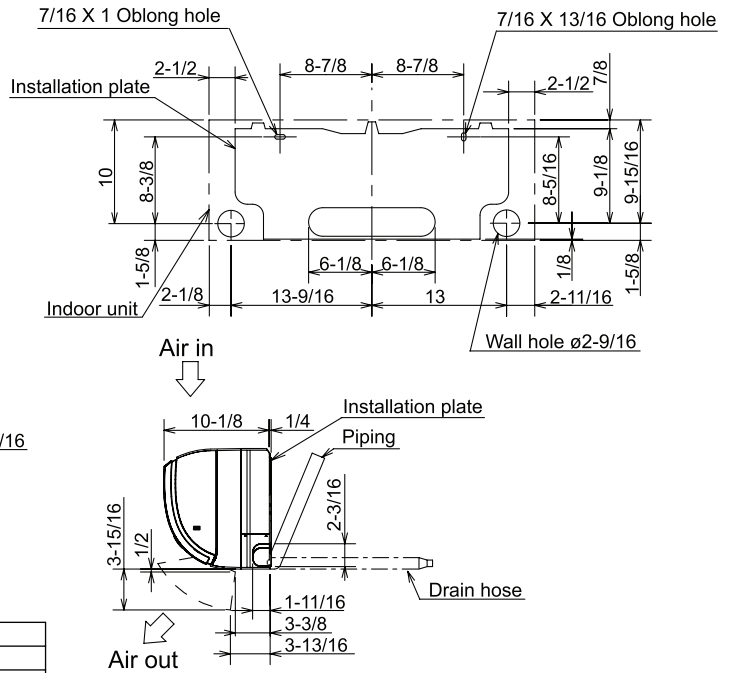
DIMENSIONS: MSZ-FE12NA-8 & MUZ-FE12NA1

MSZ-FE12NA-8

Unit: inch

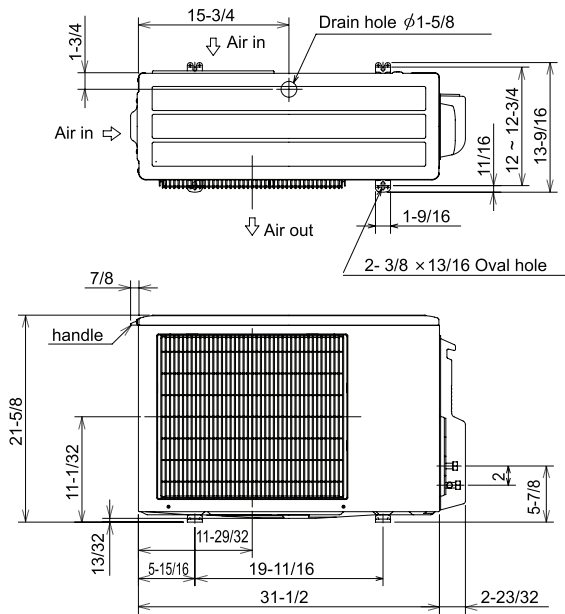


Insulation	ø1-3/8 O.D
Piping	
Liquid line	ø1/4 19-11/16 (Flared connection ø1/4)
Gas line	ø3/8 16-15/16 (Flared connection ø3/8)
Drain hose	Insulation ø1-1/8 O.D Connected part ø5/8 O.D

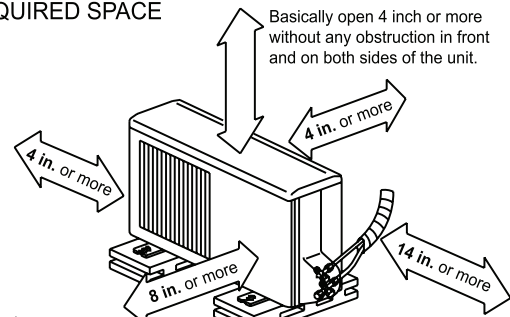


MUZ-FE12NA1

Unit: inch



REQUIRED SPACE



Open two sides of left, right, or rear side.

Liquid pipe : 1/4 (flared)
Gas pipe : 3/8 (flared)



Intertek



COOLING & HEATING
Live Better

1340 Satellite Boulevard
Suwanee, GA 30024
Tele: 678-376-2900 • Fax: 800-889-9904
Toll Free: 800-433-4822
www.mehvac.com