

SUBMITTAL DATA: MSY-GE12NA-9 & MUY-GE12NA

12,000 BTU/H WALL-MOUNTED AIR-CONDITIONING SYSTEMS

Job Name:

System Reference:

Date:



Indoor Unit: MSY-GE12NA-9


 Wireless Remote
Controller


Outdoor Unit: MUY-GE12NA

GENERAL FEATURES

- Wall-mounted indoor unit
- Standard Hybrid Catechin Prefilter is included with indoor unit
- Quiet operation
- Auto fan speed control: Quiet, Low, Medium, High, and Super High
- Hand-held Wireless Remote Controller
- Indoor unit powered from outdoor unit using A-Control
- Auto restart following a power outage
- Anti-allergy Enzyme Filter
- Limited warranty: five years parts and seven years compressor

ACCESSORIES

Outdoor Unit

- Drain Socket Assembly (MAC-860DS)

Indoor Unit

- Condensate Pump (230V; SI3100-230)

Controller Options

- Wireless Wall-mounted Remote Controller Kit (MHK1)*
- Portable Central Controller (MCCH1)*
- Outdoor Air Sensor (MOS1)*
- Wired Wall-mounted Controller (PAR-31MAA requires MAC-333IF)*
- Simple MA Remote Controller (PAC-YT53CRAU requires MAC-333IF)*

*See Submittal for information on each option.

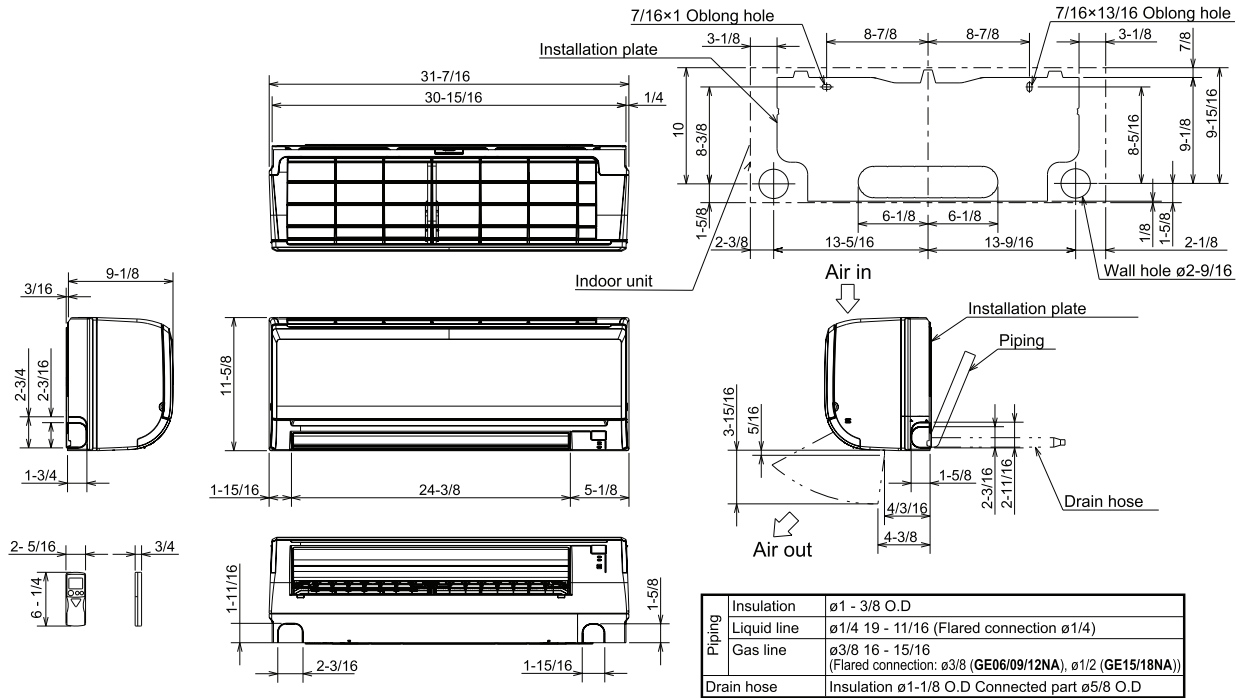
- System Control Interface (MAC-333IF)
- Remote Temperature Sensor (M21-JKO-307)
- Lockdown Bracket for Hand-held Controller (RCMKP1CB)



DIMENSIONS: MSY-GE12NA-9 & MUY-GE12NA

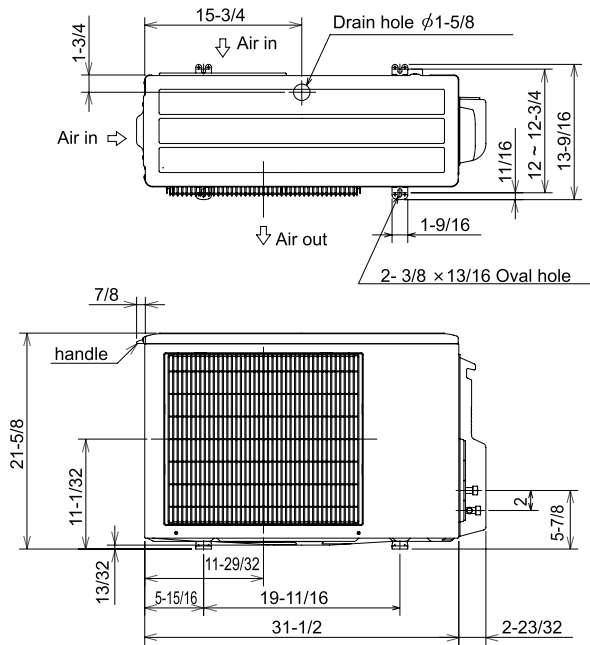
MSY-GE12NA-9

Unit: inch

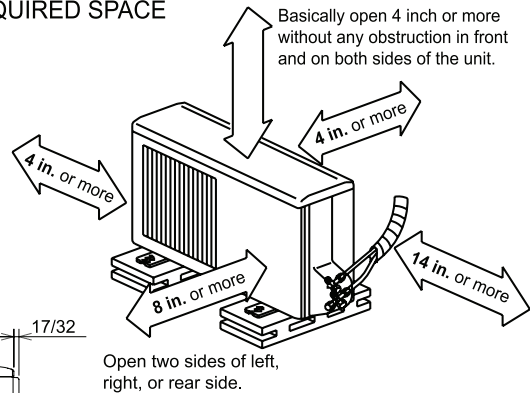


MUY-GE12NA

Unit: inch



REQUIRED SPACE



Liquid pipe : 1/4 (flared)
 Gas pipe : 3/8 (flared) (GE09/12)
 1/2 (flared) (GE15)



COOLING & HEATING

1340 Satellite Boulevard
 Suwanee, GA 30024
 Toll Free: 800-433-4822
 www.mehvac.com