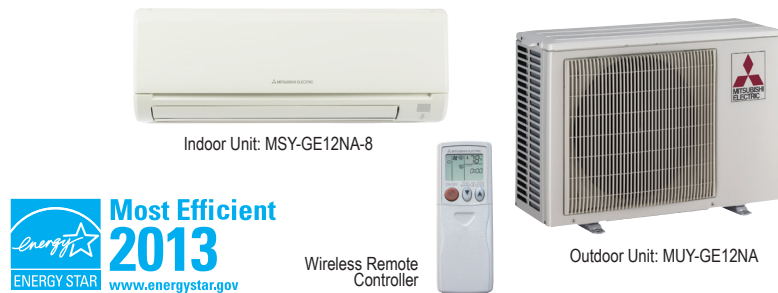


SUBMITTAL DATA: MSY-GE12NA-8 & MUY-GE12NA

12,000 BTU/H WALL-MOUNTED AIR-CONDITIONING SYSTEMS

Job Name:	Location:	Date:
Purchaser:	Engineer:	
Submitted to:	For <input type="checkbox"/> Reference <input type="checkbox"/> Approval <input type="checkbox"/> Construction	
System Designation:	Schedule No.:	



GENERAL FEATURES

- Wall-mounted indoor unit
- Standard Hybrid Catechin Prefilter is included with indoor unit
- Quiet operation
- Auto fan speed control: Quiet, Low, Medium, High, and Super High;
- Hand-held Wireless Remote Controller
- Indoor unit powered from outdoor unit using A-Control
- Auto restart following a power outage
- Anti-allergy Enzyme Filter
- Limited warranty: five years parts and seven years compressor

ACCESSORIES

Outdoor Unit

- Drain Socket Assembly (MAC-860DS)

Indoor Unit

- Condensate Pump (230V; SI3100-230)

Controller Options

- Wireless Wall-mounted Remote Controller Kit (MHK1)*
- Portable Controller (MCCH1)*
- Outdoor Air Sensor (MOS1)*

*See Submittal for information on each option.

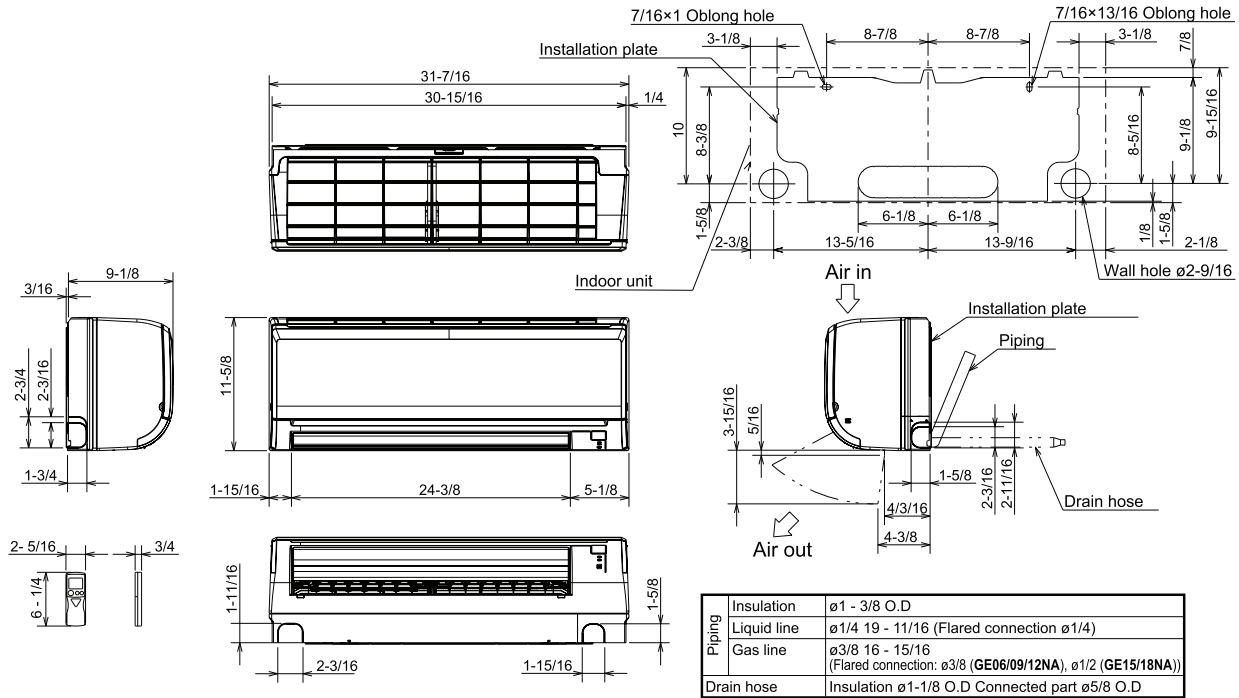
- Wired Wall-mounted Controller
(PAR-21MAAU requires MAC-333IF)
- System Control Interface (MAC-333IF)
- Remote Temperature Sensor (M21-JKO-307)
- Lockdown Bracket for Hand-held Controller (RCMKP1CB)



DIMENSIONS: MSY-GE12NA-8 & MUY-GE12NA

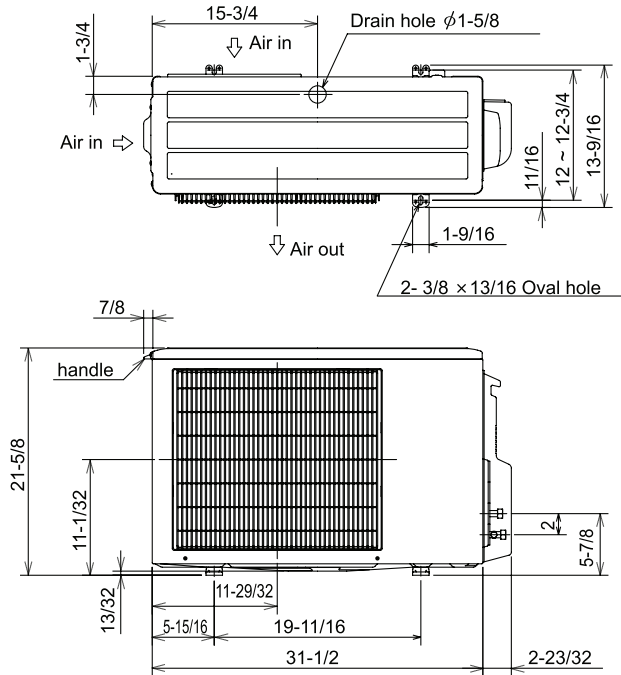
MSY-GE12NA-8

Unit: inch

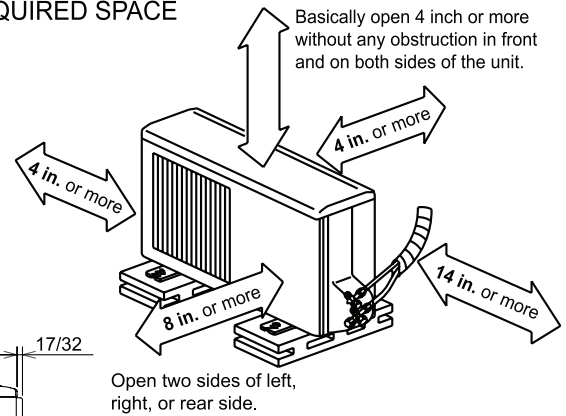


MUY-GE12NA

Unit: inch



REQUIRED SPACE



Liquid pipe : 1/4 (flared)
 Gas pipe : 3/8 (flared) (GE09/12)
 1/2 (flared) (GE15)



Intertek



1340 Satellite Boulevard
 Suwanee, GA 30024
 Tele: 678-376-2900 • Fax: 800-889-9904
 Toll Free: 800-433-4822
 www.mehvac.com