

SUBMITTAL DATA: MSY-GE09NA-8 & MUY-GE09NA

9,000 BTU/H WALL-MOUNTED AIR-CONDITIONING SYSTEMS

Job Name:	Location:	Date:
Purchaser:	Engineer:	
Submitted to:	For <input type="checkbox"/> Reference <input type="checkbox"/> Approval <input type="checkbox"/> Construction	
System Designation:	Schedule No.:	



Indoor Unit: MSY-GE09NA-8



Outdoor Unit: MUY-GE09NA


 Wireless Remote
Controller


GENERAL FEATURES

- Wall-mounted indoor unit
- Standard Hybrid Catechin Prefilter is included with indoor unit
- Quiet operation
- Auto fan speed control: Quiet, Low, Medium, High, and Super High;
- Hand-held Wireless Remote Controller
- Indoor unit powered from outdoor unit using A-Control
- Auto restart following a power outage
- Anti-allergy Enzyme Filter
- Limited warranty: five years parts and seven years compressor

ACCESSORIES

Outdoor Unit

- Drain Socket Assembly (MAC-860DS)

Indoor Unit

- Condensate Pump (230V; SI3100-230)

Controller Options

- Wireless Wall-mounted Remote Controller Kit (MHK1)*
- Portable Controller (MCCH1)*
- Outdoor Air Sensor (MOS1)*

*See Submittal for information on each option.

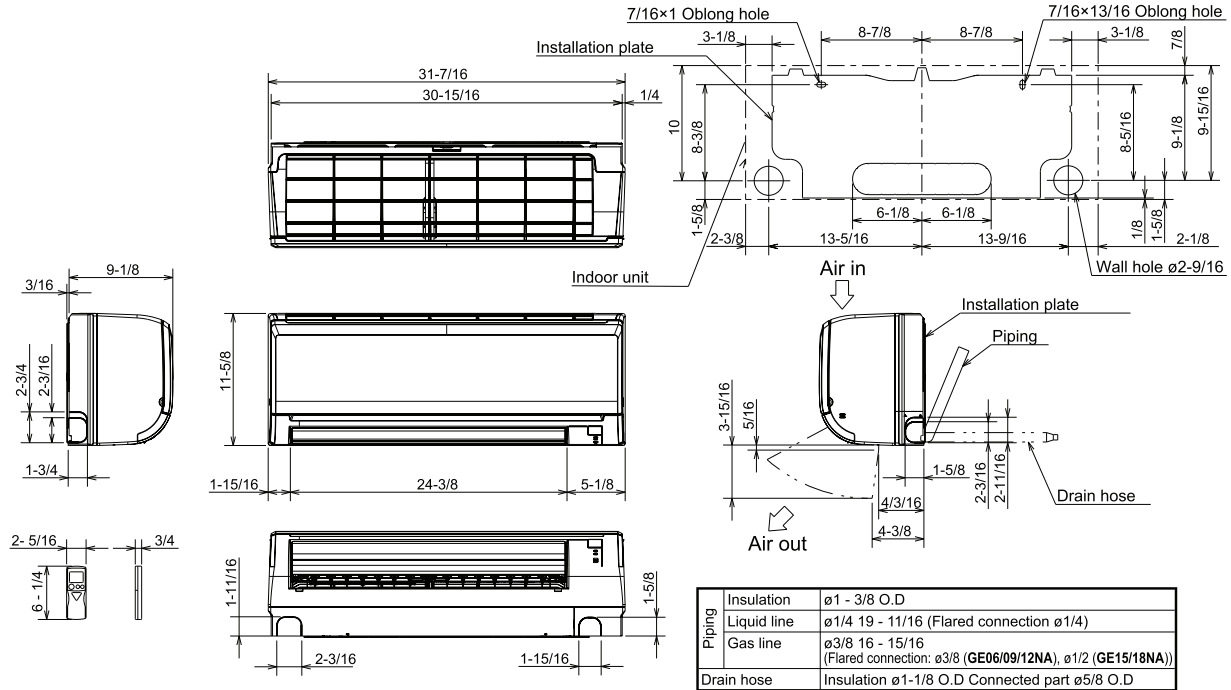
- Wired Wall-mounted Controller
(PAR-21MAAU requires MAC-333IF)
- System Control Interface (MAC-333IF)
- Remote Temperature Sensor (M21-JKO-307)
- Lockdown Bracket for Hand-held Controller (RCMKP1CB)



DIMENSIONS: MSY-GE09NA-8 & MUY-GE09NA

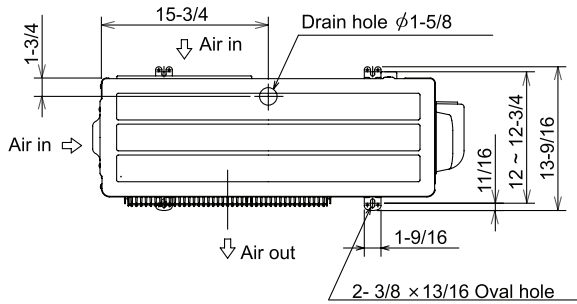
MSY-GE09NA-8

Unit: inch



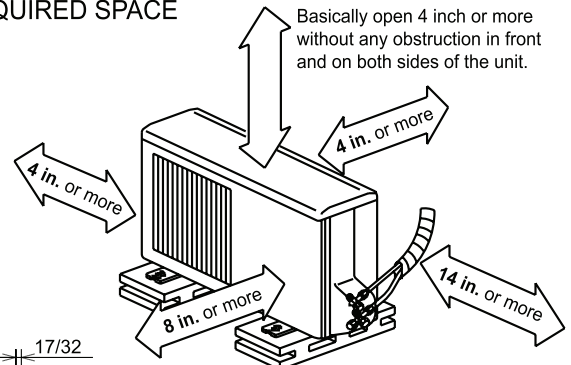
MUY-GE09NA

Unit: inch

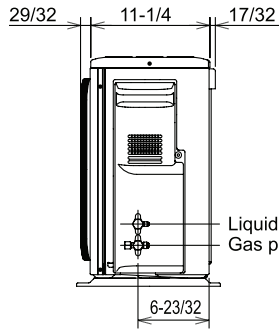
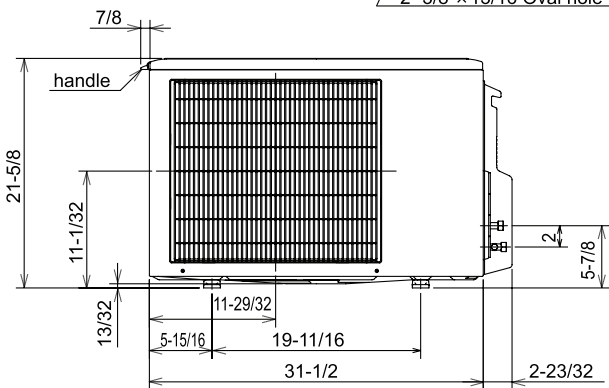


REQUIRED SPACE

Basically open 4 inch or more without any obstruction in front and on both sides of the unit.



Open two sides of left, right, or rear side.



Intertek



1340 Satellite Boulevard
Suwanee, GA 30024
Tele: 678-376-2900 • Fax: 800-889-9904
Toll Free: 800-433-4822
www.mehvac.com