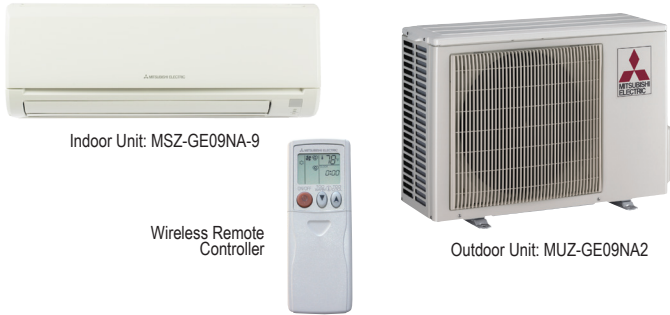


Job Name:	
System Reference:	Date:



GENERAL FEATURES

- Wall-mounted indoor unit
- Standard Hybrid Catechin Prefilter is included with indoor unit
- Quiet operation
- Auto fan speed control: Quiet, Low, Medium, High, and Super High
- Hand-held Wireless Remote Controller
- Indoor unit powered from outdoor unit using A-Control
- Auto restart following a power outage
- Anti-allergy Enzyme Filter
- Limited warranty: five years parts and seven years compressor

ACCESSORIES

Indoor Unit

- Condensate Pump (BlueDiamond X87-711/721; 115/230V)
- Condensate Pump (Sauermann SI30-115/230; 115/230V)
- Anti-Allergy Enzyme Filter (MAC-408FT-E)
- Drain Pan Level Sensor (DPLS2)

Outdoor Unit

- Three-pole Disconnect Switch (TAZ-MS303)
- Air Outlet Guide (MAC-889SG)
- Mounting Base (DSD-400N)
- Mounting Pad (ULTRILITE1)
- Wall Mounting Bracket (QSWB2000M-1)

Controller Options

- Wireless Controller (MHK1)
- Wired Remote Controller PAR-31MAA (Requires MAC-333IF-E)
- Wireless Interface for kumo cloud™ (PAC-WHS01WF-E)
- Thermostat Interface (PAC-US444CN-1)

SPECIFICATIONS

Cooling¹

Rated Capacity.....	9,000 Btu/h
Capacity Range.....	3,800 - 12,200 Btu/h
Rated Total Input	660 W
Maximum Total Input	1,200 W
SEER	23.2 Btu/h/W

Heating at 47° F²

Rated Capacity.....	10,900 Btu/h
Capacity Range.....	4,500 - 14,100 Btu/h
Rated Total Input	760 W
Maximum Total Input	1,200 W
HSPF.....	11.0 Btu/h/W

Heating at 17° F³

Rated Capacity.....	6,600 Btu/h
Maximum Capacity**	8,700 Btu/h
Rated Total Input	700 W
Maximum Total Input	950 W

Heating at 5° F⁴

Maximum Capacity**	7,061 Btu/h
--------------------------	-------------

¹ Cooling | Indoor: 80° F (27° C) DB / 67° F (19° C) WB

¹ Cooling | Outdoor: 95° F (35° C) DB / 75° F (24° C) WB

² Heating at 47°F | Indoor: 70° F (21° C) DB / 60° F (16° C) WB

² Heating at 47°F | Outdoor: 47° F (8° C) DB / 43° F (6° C) WB

³ Heating at 17° F | Indoor: 70° F (21° C) DB / 60° F (16° C) WB

³ Heating at 17° F | Outdoor: 17° F (-8° C) DB / 15° F (-9° C) WB

⁴ Heating at 5° F | Indoor: 70° F (21° C) DB / 60° F (16° C) WB

⁴ Heating at 5° F | Outdoor: 5° F (-15° C) DB / 5° F (-15° C) WB

* Rating Conditions per AHRI Standard

** Maximum Capacity is at full speed and performance for INVERTER-driven System.

ENERGY STAR®..... Yes
ENERGY STAR products are third-party certified by an EPA-recognized Certification Body.

Electrical Requirements

Power Supply 208 / 230V, 1-Phase, 60 Hz
Breaker Size 15 A

Voltage

Indoor - Outdoor S1-S2 AC 208 / 230V
Indoor - Outdoor S2-S3 DC +/- 24V
Indoor - Remote Controller..... MHK1 DC 3V
PAR-31MAA DC 12V
PAC-YT53CRAU DC 12V

Operating Conditions

Cooling⁵

Indoor Intake Air Temp... (Max.) 90° F (32° C) DB / 73° F (23° C) WB
(Min.) 67° F (19° C) DB / 57° F (14° C) WB

Outdoor Intake Air Temp. (Max.) 115° F (46° C) DB
(Min.) 14° F (-10° C) DB

⁵ Applications should be restricted to comfort cooling only; equipment cooling applications are not recommended for low ambient temperature conditions.

Heating

Indoor Intake Air Temp. . . (Max.) 80° F (27° C) DB / 67° F (19° C) WB
(Min.) 70° F (21° C) DB / 60° F (16° C) WB

Outdoor Intake Air Temp. . (Max.) 75° F (24° C) DB / 65° F (18° C) WB
(Min.) -4° F (-20° C) DB / -5° F (-21° C) WB⁶

⁶ System cuts out at -9° F (-27° C) to avoid thermistor error and automatically restarts at -4° F (-20° C).

Indoor Unit

MCA..... 1.0 A
Blower Motor (ECM)..... 0.76 F.L.A.
Blower Motor Output..... 30 W
Airflow (Quiet - Lo - Med - Hi - Super Hi)
Cooling 145-170-237-321-399 Dry CFM
109-134-201-286-364 Wet CFM
Heating..... 145-170-237-321-406 Dry CFM
Sound Pressure Level (Quiet - Lo - Med - Hi - Super Hi)
Cooling 19-22-30-37-43 dB(A)
Heating 19-22-30-37-43 dB(A)
External Finish Color..... Munsell 1.0Y 9.2/0.2
Dimension Unit
Inches:..... 11-5/8 H x 31-7/16 W x 9-1/8 D
mm: 295 H x 798 W x 232 D
Weight Unit..... 22 lbs. / 10kg
Field Drainpipe Size O.D..... 19/32" x 15 mm

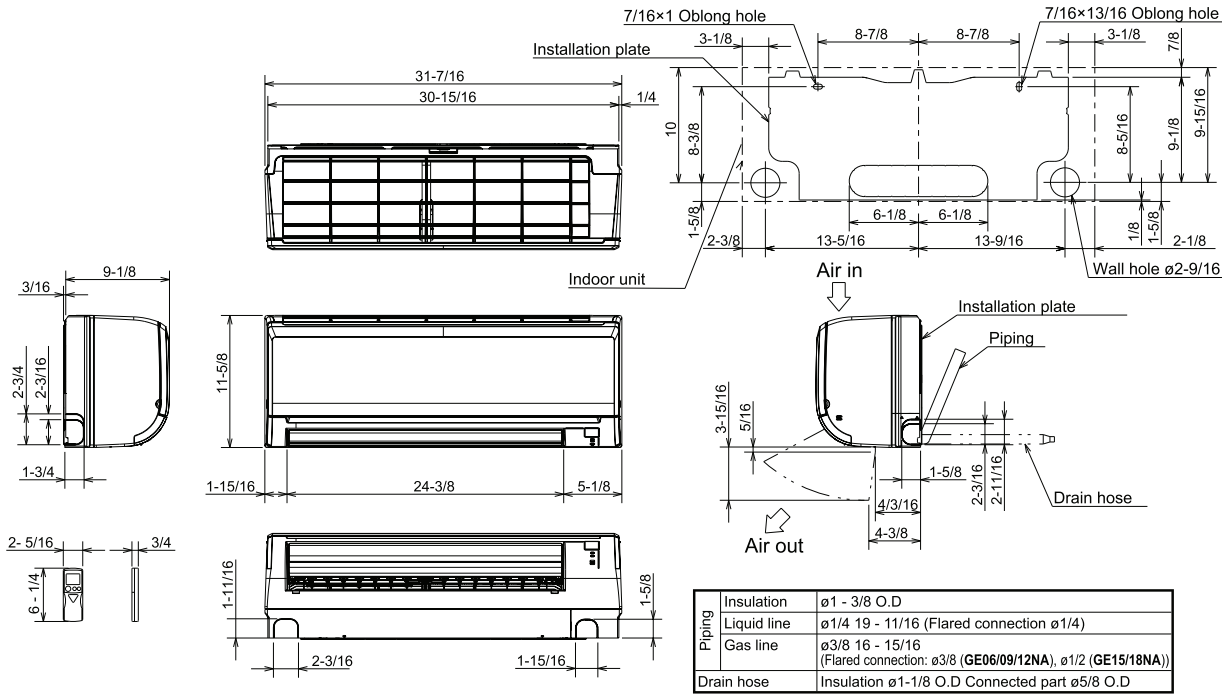
Outdoor Unit

MCA..... 12 A
Fan Motor (ECM)..... 0.50 F.L.A.
Sound Pressure Level
Cooling *1..... 46 dB(A)
Heating *2 50 dB(A)
External Finish Color..... Munsell 3Y 7.8/1.1
External Dimensions
Inches:..... 21-5/8 H x 31-1/2 W x 11-1/4 D
mm: 550 H x 800 W x 285 D
Weight 66 lbs. / 30kg
Refrigerant Type..... R410A
Refrigerant Pipe
Gas Side O.D..... 3/8 " / 9.52 mm
Liquid Side O.D..... 1/4" / 6.35 mm
Refrigerant Pipe Length
Height Difference (Max.) 40' / 12 m
Length (Max.) 65' / 20 m
Connection Method
Indoor/Outdoor..... Flared

DIMENSIONS: MSZ-GE09NA-9 & MUZ-GE09NA2

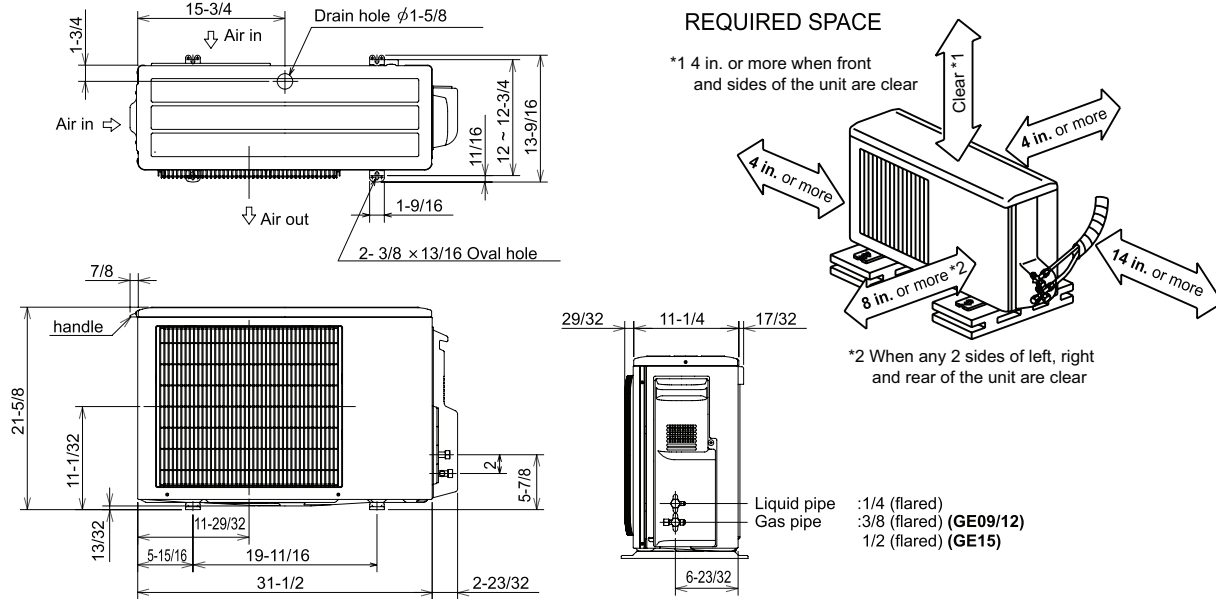
MSZ-GE09NA-9

Unit: inch



MUZ-GE09NA2

Unit: inch



COOLING & HEATING

1340 Satellite Boulevard, Suwanee, GA 30024
Toll Free: 800-433-4822 www.mehvac.com

