

Job Name: _____

System Reference: _____ Date: _____



Indoor Unit: MSZ-FE18NA



Wireless Remote Controller



Outdoor Unit: MUZ-FE18NA

GENERAL FEATURES

- Highly energy-efficient system with quiet operation
- Updated sleek, compact indoor unit design
- Includes Nano Platinum and Anti-allergy Enzyme filters
- "Powerful Mode" function permits system to temporarily run at a lower/higher temperature with an increased fan speed, which quickly brings the room to the optimum comfort level
- Hand-held Wireless Remote Controller
- Limited warranty: five years parts and seven years compressors

ACCESSORIES

Indoor Unit

- Condensate Pump (BlueDiamond X87-711/721; 115/230V)
- Condensate Pump (Sauermann SI30-115/230; 115/230V)
- Replacement Platinum Deodorizing Filter (MAC-308FT)
- Replacement Anti-allergy Enzyme Filters (MAC-2310FT-E; 2/set)

Outdoor Unit

- Base Heater (MAC-642BH-U)
- Drain Socket (MAC-860DS)

Controller Options

- Wireless Controller (MHK1)
- Wired Remote Controller PAR-31MAA (Requires MAC-333IF-E)
- Wireless Interface for kumo cloud™ (PAC-WHS01WF-E)
- Thermostat Interface (PAC-US444CN-1)

Cooling¹

Rated Capacity 18,000 Btu/h
 Minimum to Maximum Capacity Range 8,200 - 25,200 Btu/h
 SEER 20.2 Btu/h/W
 EER 14.2 Btu/h/W
 Total Rated Input 1,270 W

Heating at 47° F²

Rated Capacity 21,600 Btu/h
 Minimum to Maximum Capacity Range 7,500 - 29,700 Btu/h
 HSPF 10.3 Btu/h/W
 COP 4.11
 Total Rated Input 1,540 W

Heating at 17° F³

Rated Capacity 11,700 Btu/h
 Rated Total Input 1,240 W
 COP 2.77
 Maximum Capacity** 21,600 Btu/h
 Maximum Total Input 2,620 W

Heating at 5° F⁴

Maximum Capacity** 21,600 Btu/h

1. Cooling | Indoor: 80° F (27° C) DB / 67° F (19° C) WB*
 Cooling | Outdoor: 95° F (35° C) DB / 75° F (24° C) WB*
2. Heating at 47° F | Indoor: 70° F (21° C) DB / 60° F (16° C) WB*
 Heating at 47° F | Outdoor: 47° F (8° C) DB / 43° F (6° C) WB*
3. Heating at 17° F | Indoor: 70° F (21° C) DB / 60° F (16° C) WB*
 Heating at 17° F | Outdoor: 17° F (-8° C) DB / 15° F (-9° C) WB*
4. Heating at 5° F | Indoor: 70° F (21° C) DB / 60° F (16° C) WB
 Heating at 5° F | Outdoor: 5° F (-15° C) DB / 5° F (-15° C) WB

* Rating Conditions per AHRI Standard

**Maximum Capacity is at full speed and performance for INVERTER-driven System.

ENERGY STAR® Yes
 ENERGY STAR products are third-party certified by an EPA-recognized Certification Body.

Electrical Requirements

Power Supply 208 / 230V, 1-Phase, 60 Hz
 Breaker Size 20 A

Voltage

Indoor - Outdoor S1-S2 AC 208 / 230V
 Indoor - Outdoor S2-S3 DC +/- 24V
 Indoor - Remote Controller MHK1 DC 3V
 PAR-31MAA DC 12V
 PAC-YT53CRAU DC 12V

OPERATING CONDITIONS

		Indoor Intake Air Temp.	Outdoor Intake Air Temp.
Cooling ⁴	Maximum	90° F (32° C) DB 73° F (23° C) WB	115° F (46° C) DB
	Minimum	67° F (19° C) DB 57° F (14° C) WB	14° F (-10° C) DB
Heating	Maximum	80° F (27° C) DB 67° F (19° C) WB	75° F (24° C) DB 65° F (18° C) WB
	Minimum	70° F (21° C) DD 60° F (16° C) WB	-13° F (-25° C) DB -15° F (-26° C) WB ⁵

⁴ Applications should be restricted to comfort cooling only; equipment cooling applications are not recommended for low ambient temperature conditions.

⁵ System cuts out at -18° F (-28° C) to avoid thermistor error and automatically restarts at -14° F (-26° C).

Indoor Unit

MCA 1 A
 Blower Motor (ECM) 0.76 F.L.A.
 Airflow
 Cooling (Lo - Med - Hi - Powerful) ... 388 - 469 - 628 - 738 Dry CFM
 347 - 420 - 562 - 661 Wet CFM
 Heating (Lo - Med - Hi - Powerful) ... 388 - 469 - 628 - 738 Dry CFM
 Sound Pressure Level
 Cooling (Lo - Med - Hi - Powerful) 34 - 41 - 49 - 53 dB(A)
 Heating (Lo - Med - Hi - Powerful) 32 - 41 - 49 - 52 dB(A)

DIMENSIONS	UNIT INCHES / MM
W	43-5/16 / 1,116
D	9-3/8 / 238
H	12-13/16 / 325

Weight 37 lbs. / 17 kg
 Moisture Removal 2.7 pt./h
 External Finish Munsell No. 1.0Y 9.2 / 0.2
 Field Drainpipe Size O.D. 5/8" / 15.88 mm

Outdoor Unit

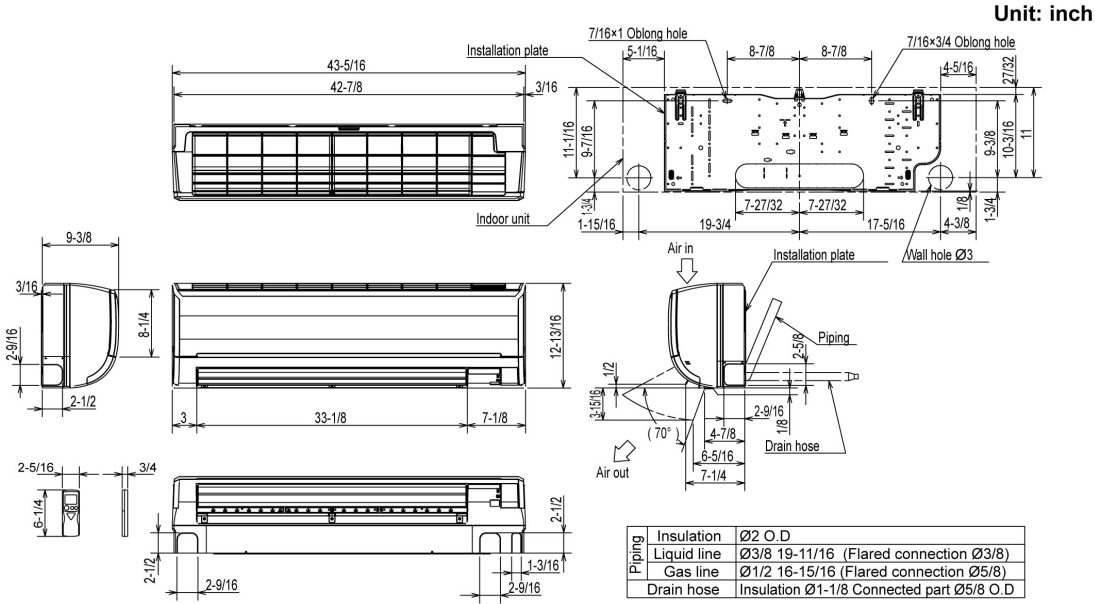
Compressor DC Inverter-driven Twin Rotary
 MCA 17.1 A
 Fan Motor (ECM) 0.93 F.L.A.
 Sound Pressure Level
 Cooling 55 dB(A)
 Heating 55 dB(A)

DIMENSIONS	INCHES / MM
W	33-1/16 + 3-3/16 / 840 + 81
D	13 / 330
H	34-5/8 / 880

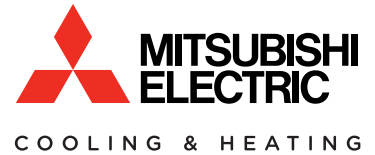
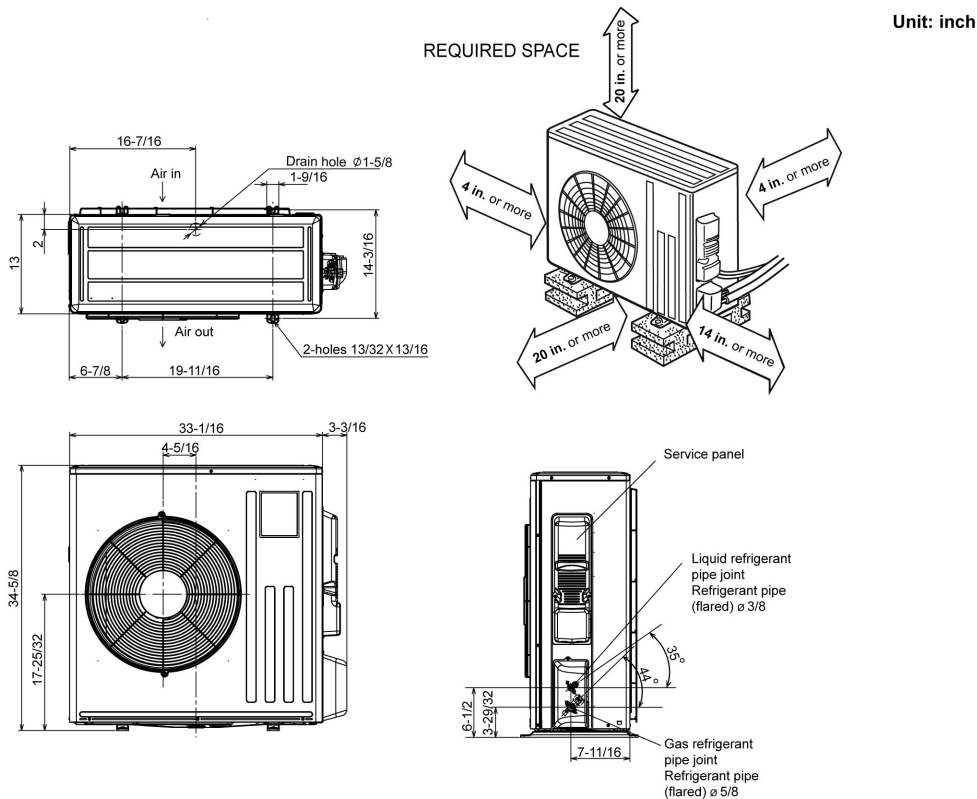
Weight 119 lbs. / 54 kg
 External Finish Munsell No. 3.0Y 7.8 / 1.1
 Refrigerant Type R410A
 Refrigerant Pipe Size O.D.
 Gas Side 5/8" / 15.88 mm
 Liquid Side 3/8" / 6.35 mm
 Max. Refrigerant Pipe Length 100' / 30 m
 Max. Refrigerant Pipe Height Difference 50' / 15 m
 Connection Method Flared

DIMENSIONS: MSZ-FE18NA & MUZ-FE18NA

MSZ-FE18NA



MUZ-FE18NA



1340 Satellite Boulevard, Suwanee, GA 30024
Toll Free: 800-433-4822 www.mehvac.com

