

SUBMITTAL DATA: MSY-GE12NA-9 & MUY-GE12NA2

12,000 BTU/H WALL-MOUNTED AIR-CONDITIONING SYSTEMS

Job Name:

System Reference:

Date:



Indoor Unit: MSY-GE12NA-9



Outdoor Unit: MUY-GE12NA2

 Wireless Remote
Controller

GENERAL FEATURES

- Wall-mounted indoor unit
- Standard Hybrid Catechin Prefilter is included with indoor unit
- Quiet operation
- Auto fan speed control: Quiet, Low, Medium, High, and Super High
- Hand-held Wireless Remote Controller
- Indoor unit powered from outdoor unit using A-Control
- Auto restart following a power outage
- Anti-allergy Enzyme Filter
- Limited warranty: five years parts and seven years compressor

ACCESSORIES
Outdoor Unit

- Outdoor Mounting Pad (ULTRILITE1)
- Drain Pan Heater (MAC-640BH-U)
- 3-1/4" Mounting Base [Pair] (DSD-400P)
- Drain Pan Socket (MAC-860DS)
- Air Outlet Guide (MAC-889SG)
- Wall Mounting Bracket (CWMB1)

Indoor Unit

- BlueDiamond MaxiBlue Condensate Pump (X87-721, 230V)
- Sauermann Condensate Pump (SI30-230, 230V)
- Anit-Allergy Enzyme Filter (MAC-408FT-E)
- Platinum Catalyst Deodorizing Filter (MAC-308FT-E)
- Drain Pan Level Sensor (DPLS1)

Controller Options

- Wireless Wall-mounted Remote Controller Kit (MHK1)*
 - Portable Central Controller (MCCH1)*
 - Outdoor Air Sensor (MOS1)*
 - Wired Wall-mounted Controller (PAR-31MAA requires MAC-333IF)*
 - Simple MA Remote Controller (PAC-YT53CRAU requires MAC-333IF)*
- *See Submittal for information on each option.
- System Control Interface (MAC-333IF)

SPECIFICATIONS
Cooling *1

Rated Capacity.....	12,000 Btu/h
Capacity Range.....	3,800 - 13,600 Btu/h
Rated Total Input	960 W
Maximum Total Input	1,300 W
SEER	22.7 Btu/h/W

Rating Conditions:

- *1 Cooling | Indoor: 80° F (27° C) DB / 67° F (19° C) WB
- *1 Cooling | Outdoor: 95° F (35° C) DB / 75° F (24° C) WB

Electrical Requirements

Power Supply	208 / 230V, 1-Phase, 60 Hz
Breaker Size	15 A

Voltage

Indoor - Outdoor S1-S2	AC 208 / 230V
Indoor - Outdoor S2-S3	DC +/- 24V
Indoor - Remote Controller.....	MHK1 DC 3V PAR-31MAA DC 12V PAC-YT53CRAU DC 12V

Operating Conditions
Cooling

Indoor Intake Air Temp. . . . (Max.) 90° F (32° C) DB / 73° F (23° C) WB	(Min.) 67° F (19° C) DB / 57° F (14° C) WB
Outdoor Intake Air Temp. (Max.) 115° F (46° C) DB	(Min.) 14° F (-10° C) DB

Indoor Unit

MCA.....	1.0 A
Blower Motor (ECM).....	0.76 F.L.A.
Blower Motor Output.....	30 W
Airflow (Quiet - Lo - Med - Hi - Super Hi)	
Cooling	145-170-237-321-399 Dry CFM 109-134-201-286-364 Wet CFM
Sound Pressure Level (Quiet - Lo - Med - Hi - Super Hi)	
Cooling	19-22-30-37-43 dB(A)
External Finish Color	Munsell 1.0Y 9.2/0.2
Dimension Unit	
Inches:.....	11-5/8 H x 31-7/16 W x 9-1/8 D
mm:	295 H x 798 W x 232 D
Weight Unit.....	22 lbs. / 10kg
Field Drainpipe Size O.D.....	19/32" x 15 mm

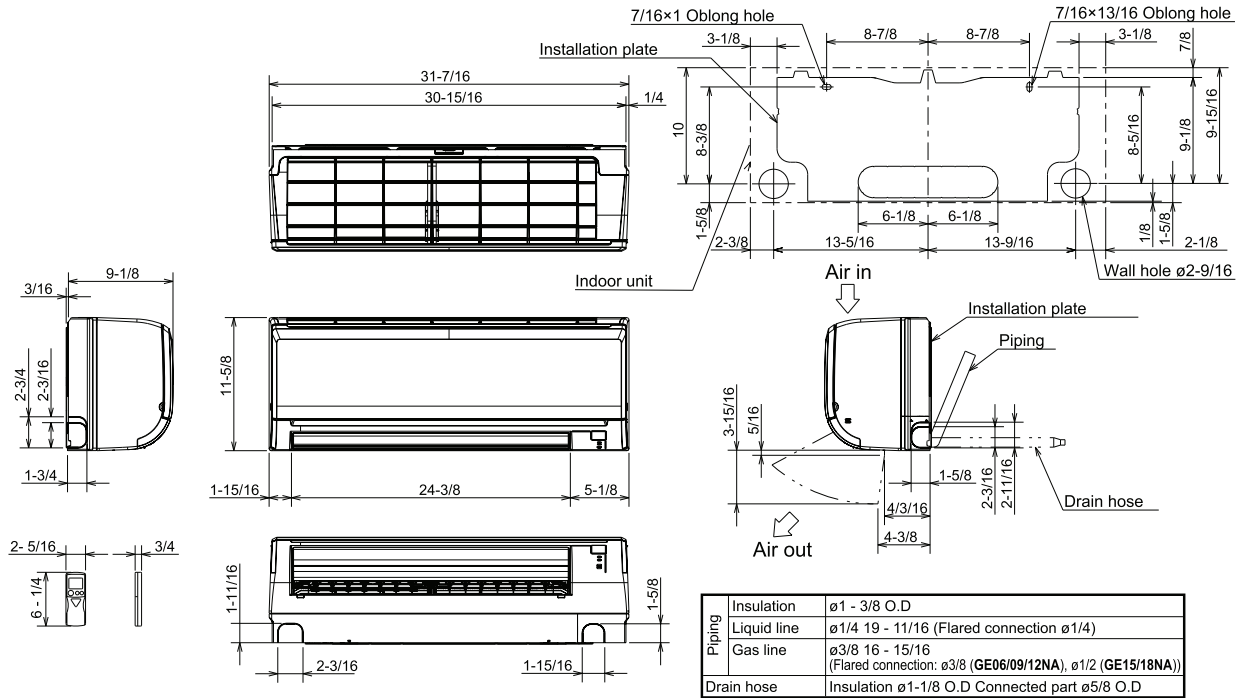
Outdoor Unit

MCA.....	12 A
Fan Motor (ECM).....	0.50 F.L.A.
Sound Pressure Level	
Cooling *1.....	49 dB(A)
External Finish Color	Munsell 3Y 7.8/1.1
External Dimensions	
Inches:.....	21-5/8 H x 31-1/2 W x 11-1/4 D
mm:	550 H x 800 W x 285 D
Weight	77Lbs. / 35kg
Refrigerant Type	R410A
Refrigerant Pipe	
Gas Side O.D.....	3/8 " / 9.52 mm
Liquid Side O.D.....	1/4" / 6.35 mm
Refrigerant Pipe Length	
Height Difference (Max.)	40' / 12 m
Length (Max.)	65' / 20 m
Connection Method	
Indoor/Outdoor.....	Flared

DIMENSIONS: MSY-GE12NA-9 & MUY-GE12NA2

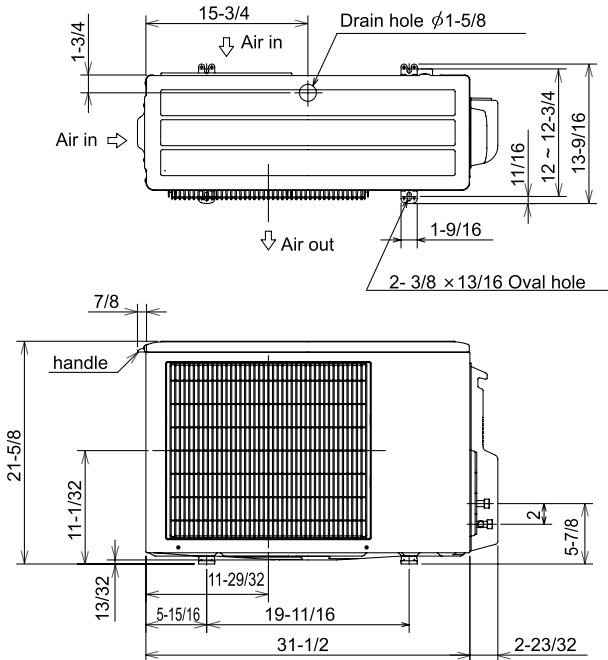
MSY-GE12NA-9

Unit: inch



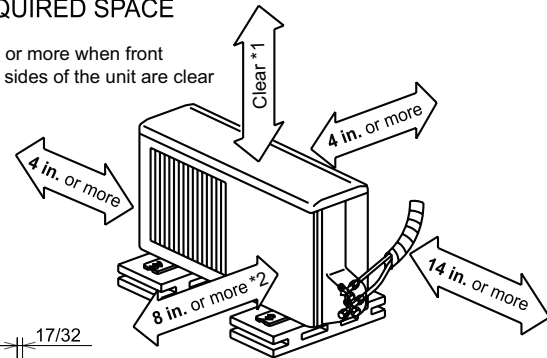
MUY-GE12NA2

Unit: inch



REQUIRED SPACE

*1 4 in. or more when front and sides of the unit are clear



*2 When any 2 sides of left, right and rear of the unit are clear



COOLING & HEATING

1340 Satellite Boulevard
Suwanee, GA 30024
Toll Free: 800-433-4822
www.mehvac.com