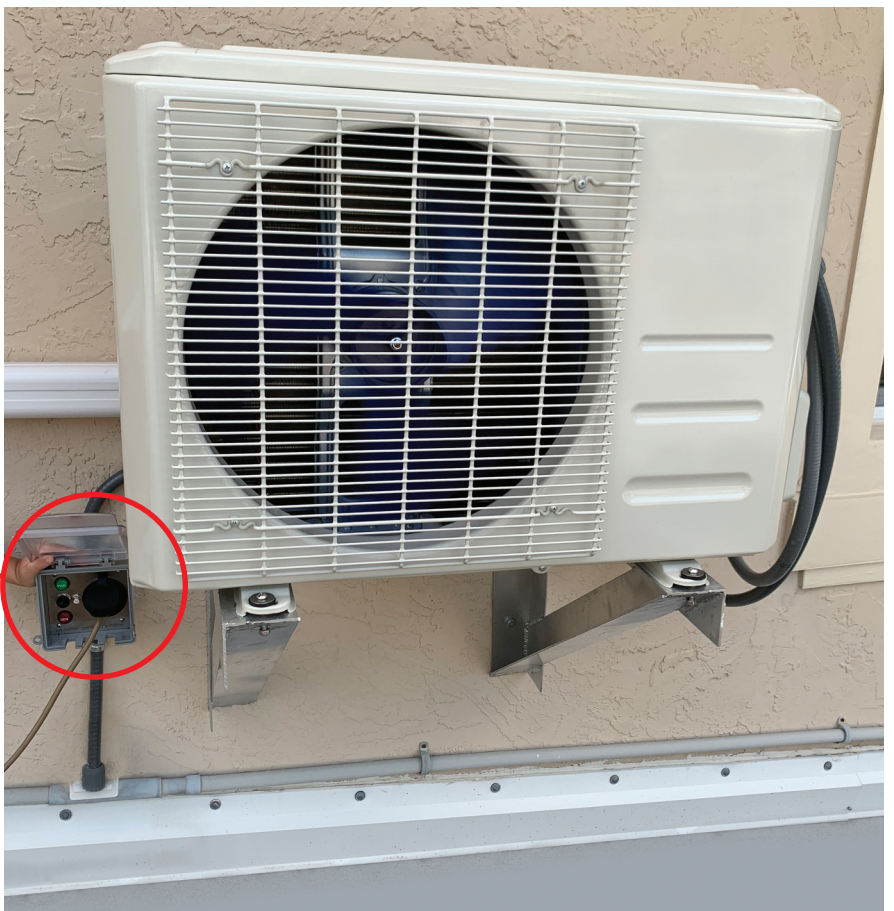
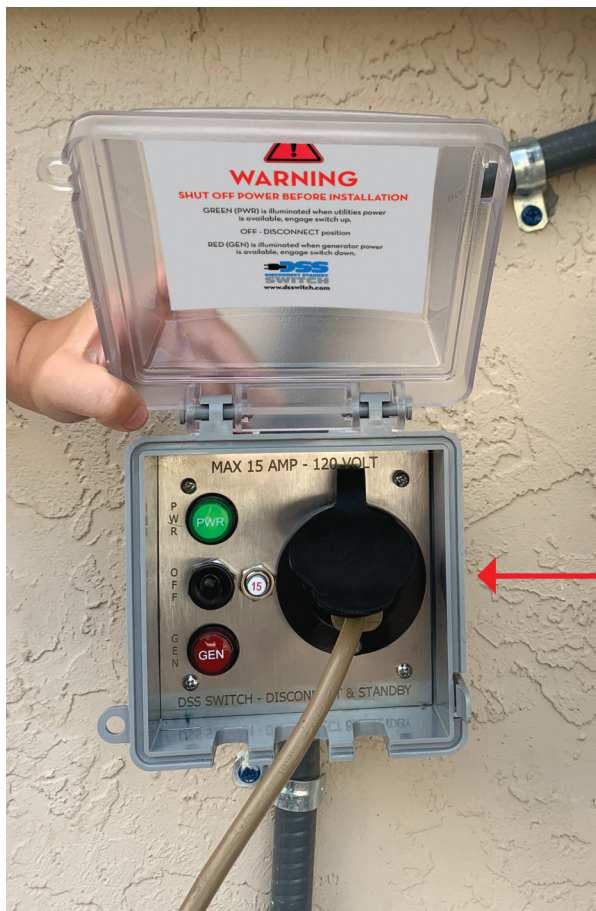




POWER OUTAGES HAVE NOW BECOME A FACT OF LIFE!

You never know when they will hit, or how long they will last. But you do know this: unless you have a backup generator, your AC (or heating) is not going to work while the power is out, and not everybody can afford or has the room for a whole house generator.

THE NEW **DSS** DISCONNECT STANDBY SWITCH IS THE SOLUTION!



THE NEW DSS DISCONNECT / STANDBY SWITCH

quickly and easily allows you to run your AC system during a power outage using only a small portable generator. The compact DSS switch replaces the disconnect on your condenser and provides an easily accessible port for you to plug in your small generator and be up and running in just a few minutes. There's no need for expensive whole house generators with complicated transfer switches.





DSS15
15 AMP
120 VOLT



DSS 25
25 AMP
240 VOLT



DSS 30
30 AMP
240 VOLT

Electrical codes require all condensers to be fitted with a disconnect switch, and this is the primary function of the DSS Switch.

What makes the DSS Switch truly unique is that it incorporates a standby generator switch as well. In the event of a power outage, any portable generator can quickly and easily be connected directly to the AC system, enabling it to continue operating in cooling or heat pump mode until the outage is over.

Fully assembled in the USA from UL listed components, the DSS Switch conforms to all current code requirements. It toggles easily between main panel off position and generator on position. The DDS switch incorporates 2 LED lights to notify the user of the power supply status.

Whole house generators are costly and often are not permitted or face challenges from zero lot line restrictions, so in many cases they are simply not a viable option. Initially designed for energy efficient ductless systems and small ducted systems as well, the DSS Switch bypasses the main panel. This provides an easily installed economical method to allow a single circuit appliance to run independently direct from a generator.

- Available in 3 sizes to handle a 120 volt system rated at 15 Amps or a 240 volt system rated up to 30 Amps.
- Suitable for ductless or ducted systems in cooling or heating mode.
- 3 position switch toggles easily between off, house power and generator positions.
- Includes 2 LED'S to indicate system power status.
- Quick and easy to install.
- Plug n play wiring.
- Fully assembled in the USA.
- All components are UL listed.
- Code conformant.

Exclusive Master Distributor for the USA & Canada:



MARKETAIR Inc.

P.O. Box 10330, New Brunswick, NJ 08906 USA
 ph: 732-985-8226 • fax: 732-985-2134 • info@marketair.com
www.marketair.com

Available From:

