

2' X 2' PLASTIC LAY-IN SUPPLY



- 2' X 2' Lay-In 3 Cone and Bordered Supply featuring an Easy Attach Knob.
 - 3 Cone available with Pre-Molded Boot Sizes 6", 8", 10" & 12"
 - Bordered Supply available with Pre-Molded Boot Sizes 8", 10", 12" & 14"
- 2' X 2' Lay-In Magnetic Plaque Supply available with Pre-Molded Boot Sizes 6", 8", 10", 12" and Bulls Eye Back Options
 - Magnetic Engagement System-4 pre-installed coated magnets (With Over 24 lbs. of Pull Force)
- Standard White or Black Premix ABS (Additional Color Options)
- Won't Rust, Corrode, Discolor, or Fade
- Less conductive than metal (More resistant to "sweating")
- Simple install and removal of diffuser for fast and efficient cleanability — Patent Pending
- **3 Cone, Plaque, and Bordered Supply units available with HaVACo Specific Insulated Back. Add "IB" to product number to designate this option.**

3 CONE SUPPLY (6", 8", 10" & 12")

	<u>WHITE</u>	<u>BLACK</u>	<u>INSULATED BACK</u>
6"	HT-2X2-SPL6	HT-2X2-SPL6-BK	HT-2X2-SPL6-IB
8"	HT-2X2-SPL8	HT-2X2-SPL8-BK	HT-2X2-SPL8-IB
10"	HT-2X2-SPL10	HT-2X2-SPL10-BK	HT-2X2-SPL10-IB
12"	HT-2X2-SPL12	HT-2X2-SPL12-BK	HT-2X2-SPL12-IB

PLAQUE SUPPLY (6", 8", 10", 12" & BULLS EYE)

6"	HT-2X2-PSPL6	HT-2X2-PSPL6-BK	HT-2X2-PSPL6-IB
8"	HT-2X2-PSPL8	HT-2X2-PSPL8-BK	HT-2X2-PSPL8-IB
10"	HT-2X2-PSPL10	HT-2X2-PSPL10-BK	HT-2X2-PSPL10-IB
12"	HT-2X2-PSPL12	HT-2X2-PSPL12-BK	HT-2X2-PSPL12-IB
BE	HT-2X2-PSPLBE	HT-2X2-PSPLBE-BK	HT-2X2-PSPLBE-IB

BORDER SUPPLY (6", 8", 10", 12" & 14")

6"	HT-2X2-BSPL6	HT-2X2-BSPL6-BK	HT-2X2-BSPL6-IB
8"	HT-2X2-BSPL8	HT-2X2-BSPL8-BK	HT-2X2-BSPL8-IB
10"	HT-2X2-BSPL10	HT-2X2-BSPL10-BK	HT-2X2-BSPL10-IB
12"	HT-2X2-BSPL12	HT-2X2-BSPL12-BK	HT-2X2-BSPL12-IB
14"	HT-2X2-BSPL14	HT-2X2-BSPL14-BK	HT-2X2-BSPL14-IB

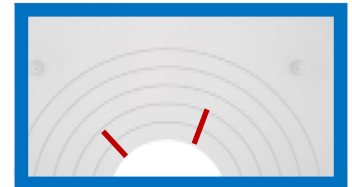
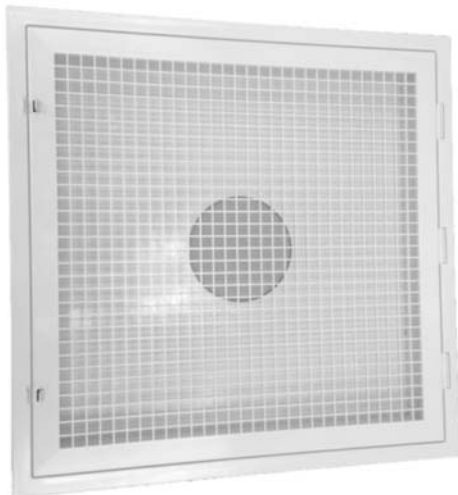


2' X 2' PLASTIC LAY-IN RETURN

HT-2X2-RTN & HT-2X2-ERTN

WITH 6"-16" INLET OPENING

- 2' X 2' Lay-In Louver (HT-2X2-RTN) and Egg Crate Return (HT-2X2-ERTN) Models
- Holds 20" X 20" X 1" or 20" X 20" X 2" filters (FILTER NOT INCLUDED)
- Cut Away Bulls-Eye Back with 6" - 16" Inlet Size Options—Compatible with any standard metal collar.
- Standard White or Black Premix ABS
- Won't Rust, Corrode, Discolor, or Fade
- Less conductive than metal (More resistant to "sweating")
- Includes packet of four (4) 1" stand offs — Peel off gasket back and stick on inside of Return Frame in each corner approximately 1" from



LOUVER RETURN

WHITE

BLACK

BE [HT-2X2-RTN](#)

HT-2X2-RTN-BK

EGG CRATE RETURN

WHITE

BLACK

BE [HT-2X2-ERTN](#)

HT-2X2-ERTN-BK

