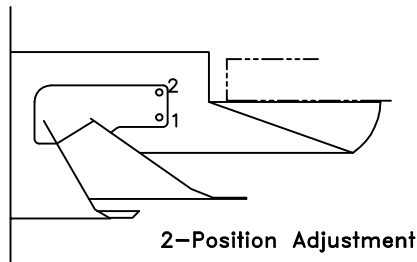
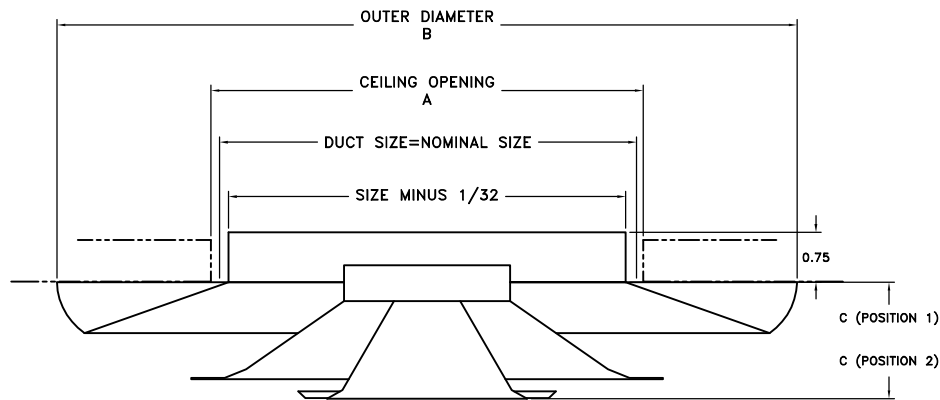


- STEEL CONSTRUCTION
- THICKNESS: .035 MINIMUM
- 5 STEP CORE ADJUSTMENT
- REMOVABLE CORE
- OPTIONS:  
 NO. 18 DUCT RING SEE SD-9225  
 NO. 19 DAMPER SEE SD-9226 (Duct Mount Only)
- FINISH: WHITE (W) ENAMEL



LISTED SIZE	A	B	C	
			Pos. 1	Pos. 2
6	6-1/2	11-1/8	1-1/8	1-3/4
8	8-1/2	14-3/4	1-1/2	2-1/8
10	10-1/2	18-1/4	2-1/8	2-7/8
12	12-1/2	22	2-3/8	3-1/8
14	14-1/2	26	2-5/8	3-3/8
16	16-1/2	29	3-1/4	4
18	18-1/2	33-1/2	3-7/8	4-3/4

- STEEL CONSTRUCTION
- FINISH: WHITE (W) ENAMEL
- 2 STEP CORE ADJUSTMENT
- REMOVABLE CORE
- ADJUSTMENT BY REMOVING SPRING-SET INNER CONES, THEN REPOSITIONING SIX SCREWS.
- 360° DIFFUSION PATTERN
- SIZES 12 THRU 18 HAVE HANGER TO SUSPEND CORE WHEN REMOVED

JOB NAME: _____	SUBMITTED BY: _____	DATE: 07/30/2013	SD-9200
LOCATION: _____	<b>20</b> Steel Round Adjustable Diffuser		
ARCHITECT: _____			
ENGINEER: _____			
CONTRACTOR: _____			