

Submittal Data: UTP-PU03A Primary Branch Box
UTP-PU03B Secondary Branch Box

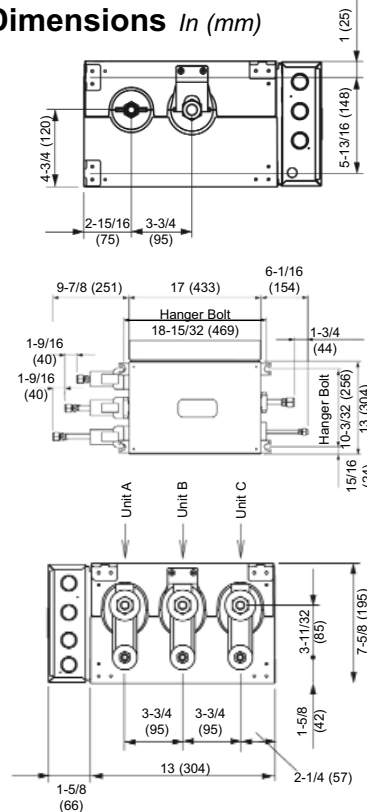


Job Name: _____ Location: _____
Purchaser: _____
Engineer: _____
Submitted To: _____ For: Reference Approval Construction
Submitted By: _____
Unit Designation: _____ Schedule No. _____ Model No.: _____

	UTP-PU03A Primary	UTP-PU03B Secondary
Connectable Indoor Unit	1 ~ 3	1 ~ 3
Max. Combination BTU/h	62,000 Nom.*	62,000 Nom.*
Min. Combination BTU/h	7,000 Nom.*	7,000 Nom.*
Clg. Operating Range °F(°C)	25-115 (-5-46)	25-115 (-5-46)
Htg. Operating Range °F(°C)	5-75 (-15-24)	5-75 (-15-24)
%RH	80 or less	80 or less
Voltage/Frequency/Phase	208-230/60/1	208-230/60/1
Maximum Current Ampacity (A)	15	15
Running Current <i>Rated</i> (A): Cooling	0.050	0.050
Heating	0.050	0.050
Power Use <i>Rated</i> (W): Cooling	10	10
Heating	10	10
Dimensions: Gross (Flare to Flare):		
Height x Width x Depth <i>Inch</i>	10 x 36-5/8 x 17-1/8	10 x 36-5/8 x 17-1/8
Height x Width x Depth <i>mm</i>	255 x 929 x 434	255 x 929 x 434
Dimensions: Net (Metal Box Only):		
Height x Width x Depth <i>Inch</i>	7-5/8 x 17 x 14-5/8	7-5/8 x 17 x 14-5/8
Height x Width x Depth <i>mm</i>	195 x 433 x 370	195 x 433 x 370
Net Weight <i>lbs. (kg)</i>	20 (9)	20 (9)
Conn. Pipe Diameter - Main <i>Inch</i>	(3/8 Liq. x 5/8 Suc.)	(3/8 Liq. x 5/8 Suc.)
Conn. Pipe Diameter - Branch <i>Inch</i>	(1/4 Liq. x 1/2 Suc.) 3 pair	(1/4 Liq. x 1/2 Suc.) 3 pair
Connection Method	Flare	Flare
Connection Adapter Included <i>Inch</i>	(1/2MF x 3/8FF) x 3 (1/2MF x 5/8FF) x 3 No adapter needed for 18k BTU	(1/2MF x 3/8FF) x 3 (1/2MF x 5/8FF) x 3 No adapter needed for 18k BTU

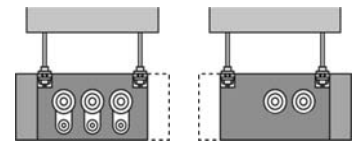
*So long as the total system nominal capacity is between 39,000 and 62,000 BTUs.

Dimensions In (mm)



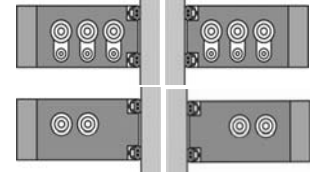
Allowed Branch Box Mounting Direction

Threaded Rod Mount



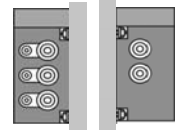
By reversing the electrical box position you can orient the inlet and outlet pipes into a left hand or right hand configuration.

Horizontal Wall Mount



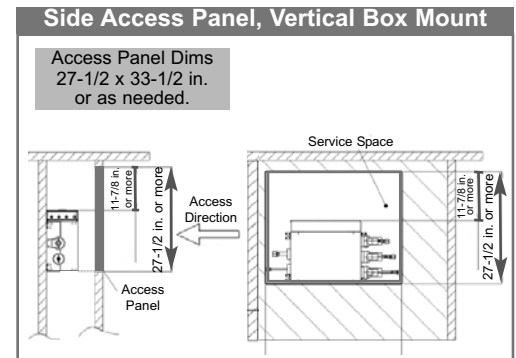
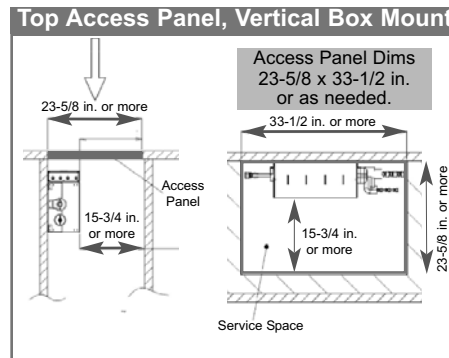
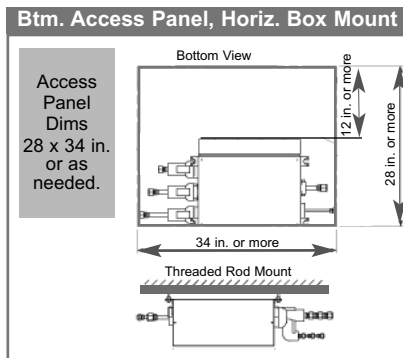
By reversing the electrical box position you can orient the inlet and outlet pipes into a left hand or right hand configuration.

Vertical Wall Mount



You cannot reverse the electrical box position when mounting the branch box vertically.

Clearances



Notes:

33-1/2 in. or more