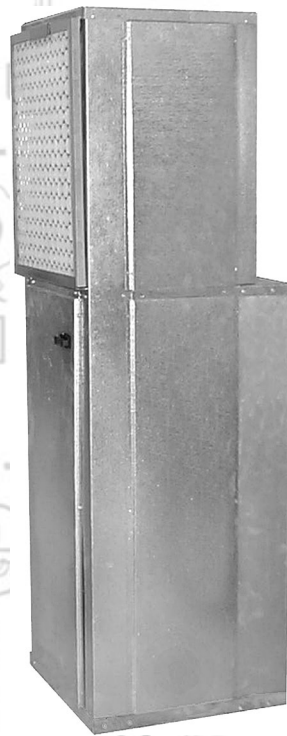


First Operations

SPX / SPU SERIES PARTS LIST

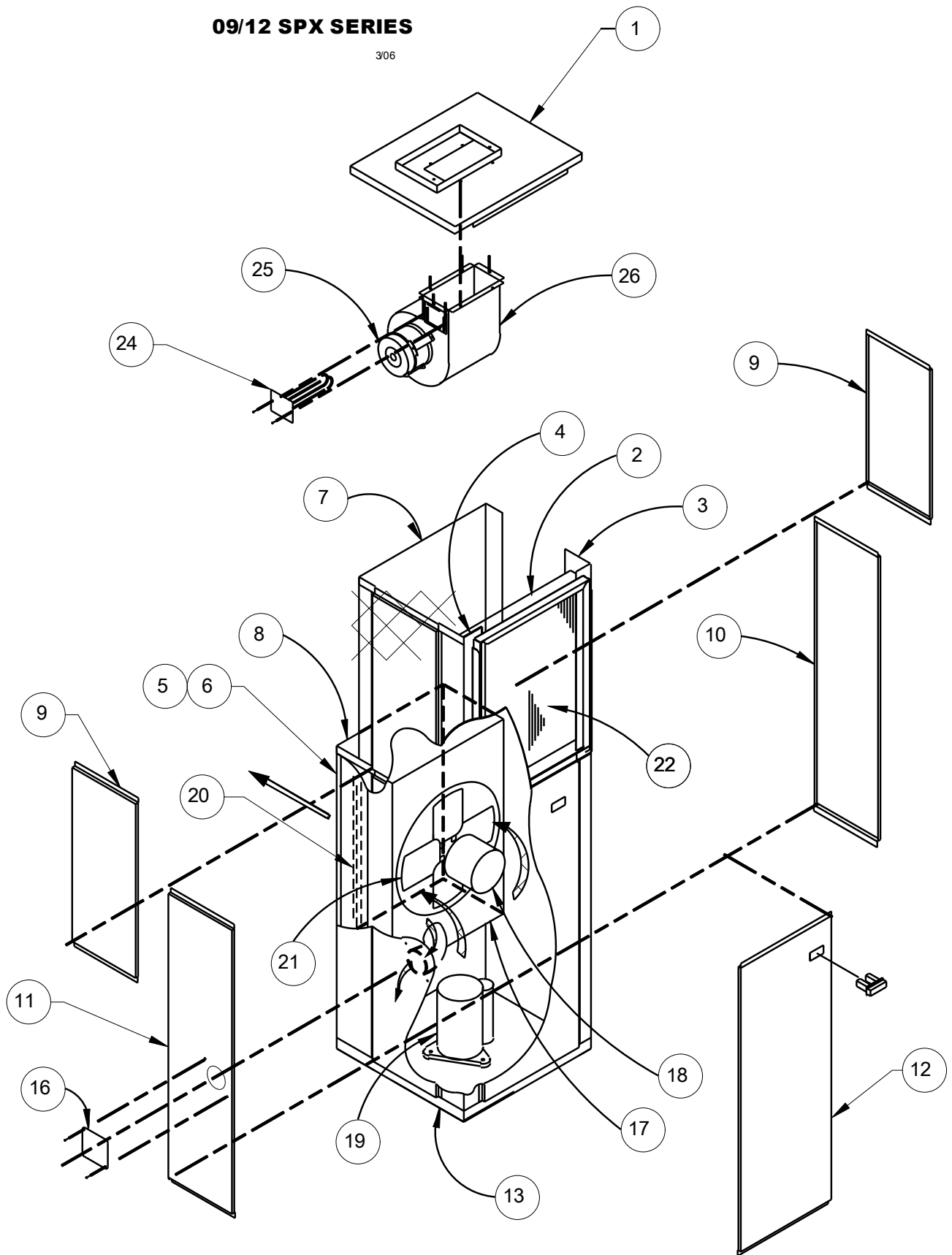


9 / 12 SPU, SPU-HP, SPU-HW SERIES									
ITEM #	DESCRIPTION	9SPU / 9SPU-HW	9SPX / 9SPX-HW	12SPU / 12SPU-HW	12SPX / 12SPX-HW	9SPU-HP	9SPX-HP	12SPU-HP	12SPX-HP
1	Top Panel	212-4I	212-4I	212-4I	212-4I	212-4I	212-4I	212-4I	212-4I
2	Evap. Baffle	10-2072I	10-2071-1I	10-2071-1I	10-2071-1I	10-2072I	10-2071-1I	10-2071-1I	10-2071-1I
3	Front R. Corner Post	10-2033X	10-2033X	10-2033X	10-2033X	10-2033X	10-2033X	10-2033X	10-2033X
4	Front L. Corner Post	10-2034-1X	10-2034-1X	10-2034-1X	10-2034-1X	10-2034-1X	10-2034-1X	10-2034-1X	10-2034-1X
5	Rear R. Corner Post	10-2035C	10-2035C	10-2035C	10-2035C	10-2035C	10-2035C	10-2035C	10-2035C
6	Rear L. Corner Post	10-2036C	10-2036C	10-2036C	10-2036C	10-2036C	10-2036C	10-2036C	10-2036C
7	Rear Vertical Panel	10-2032I	10-2032I	10-2032I	10-2032I	10-2032I	10-2032I	10-2032I	10-2032I
8	Middle Panel	10-2030-1I	10-2030-1I	10-2030-1I	10-2030-1I	10-2030-1I	10-2030-1I	10-2030-1I	10-2030-1I
9	Upper Access Panel L & R	10-2038I	10-2038I	10-2038I	10-2038I	10-2038I	10-2038I	10-2038I	10-2038I
10	Lower R. Access Panel	10-2037C	10-2037C	10-2037C	10-2037C	10-2037C	10-2037C	10-2037C	10-2037C
11	Lower L. Access Panel	210-677C	210-677C	210-677C	210-677C	210-677C	210-677C	210-677C	210-677C
12	Front Access Panel	10-2039C	10-2039C	10-2039C	10-2039C	10-2039C	10-2039C	10-2039C	10-2039C
13	Base Pan Assembly	210-705-1P	210-705-2P	210-705-2P	210-705-2P	210-705-1P	210-705-1P	210-705-2P	210-705-2P
NOT SHOWN	Upper Filter Clip	10-2062	N/A	10-2062	N/A	10-2062	N/A	10-2062	N/A
NOT SHOWN	Bottom Filter Clip	10-2063	N/A	10-2063	N/A	10-2063	N/A	10-2063	N/A
16	Vent Cover Panel	10-2028	10-2028	10-2028	10-2028	10-2028	10-2028	10-2028	10-2028
17	Condenser Fan Shroud	210-672	210-672	210-672	210-672	210-672	210-672	210-672	210-672
18	Condenser Fan Motor	M207	M207	M207	M207	M207	M207	M207	M207
19	Compressor	936-50	CO125	936-51	CO164	936-50	CO125	936-51	CO164
20	Condenser Coil	320-730	321-5	320-724	321-5	320-730	321-5	320-724	321-5
21	Condenser Fan	FB1630	FB1630	FB1630	FB1630	FB1630	FB1630	FB1630	FB1630
22	Evaporator Coil	320-731	321-4	320-725	321-4	320-732	321-11	320-726	321-5
23	Metering Device								
	Heating Piston	N/A	N/A	N/A	N/A	CP81-42		CP81-51	
	Cooling Piston	CP81-38	CP81-38	CP81-42	CP81-42	CP81-38	CP81-38	CP81-42	CP81-42
24	Heater Element								
	2KW	315-9-4	315-9-4	315-9-4	315-9-4	315-9-4	315-9-4	315-9-4	315-9-4
	3KW	315-9-3	315-9-3	315-9-3	315-9-3	315-9-3	315-9-3	315-9-3	315-9-3
	4KW	315-9-2	315-9-2	315-9-2	315-9-2	315-9-2	315-9-2	315-9-2	315-9-2
	5KW	N/A	N/A	315-9-1	315-9-1	N/A	N/A	315-9-1	315-9-1
25	Evaporator Motor	M172	M172	M172	M172	M172	M172	M172	M172
26	Evaporator Blower Housing	210-653	210-653	210-653	210-653	210-653	210-653	210-653	210-653
NOT SHOWN	Hot Water Coil	320-674	320-674	320-674	320-674	N/A	N/A	N/A	N/A

Note: See pages 6 & 7 for Electrical Components

09/12 SPX SERIES

306

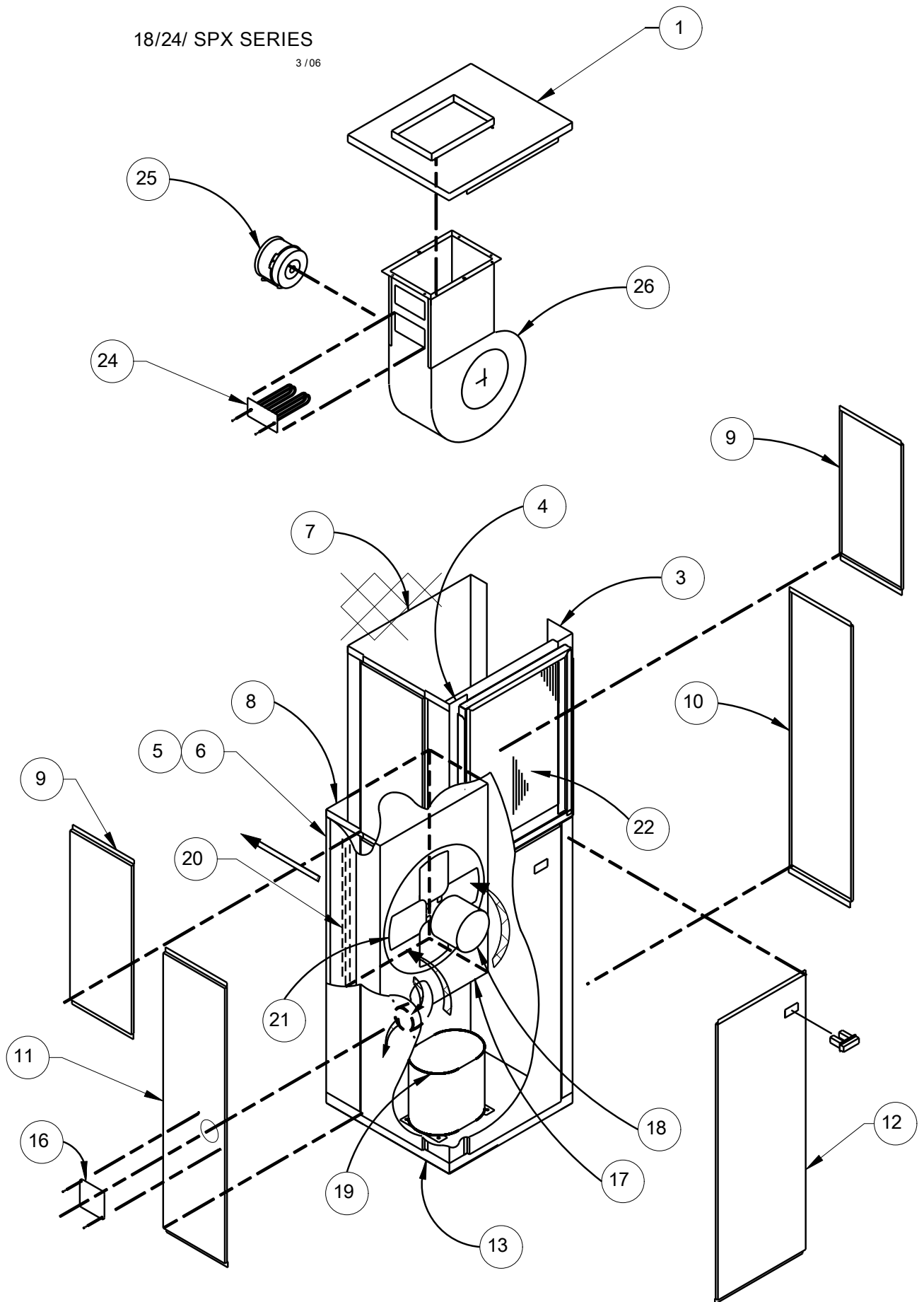


18 / 24 SPU, SPU-HP, SPU-HW SERIES									
ITEM #	DESCRIPTION	18SPU / 18SPU-HW	18SPX / 18SPX-HW	24SPU / 24SPU-HW	24SPX / 24SPX-HW	18SPU-HP	18SPX-HP	24SPU-HP	24SPX-HP
1	Top Panel	10-2031I	10-2031I	210-686I	210-686I	10-2031I	10-2031I	210-686I	210-686I
2	Evap. Baffle	-	-	-	-	-	-	-	-
3	Front R. Corner Post	10-2033X	10-2033X	10-2033X	10-2033X	10-2033X	10-2033X	10-2033X	10-2033X
4	Front L. Corner Post	10-2034-1X	10-2034-1X	10-2034-1X	10-2034-1X	10-2034-1X	10-2034-1X	10-2034-1X	10-2034-1X
5	Rear R. Corner Post	10-2035C	10-2035C	10-2035C	10-2035C	10-2035C	10-2035C	10-2035C	10-2035C
6	Rear L. Corner Post	10-2036C	10-2036C	10-2036C	10-2036C	10-2036C	10-2036C	10-2036C	10-2036C
7	Rear Vertical Panel	10-2032I	10-2032I	10-2032I	10-2032I	10-2032I	10-2032I	10-2032I	10-2032I
8	Middle Panel	10-2030-1I	10-2030-1I	10-2030-1I	10-2030-1I	10-2030-1I	10-2030-1I	10-2030-1I	10-2030-1I
9	Upper Access Panel L & R	10-2038I	10-2038I	10-2038I	10-2038I	10-2038I	10-2038I	10-2038I	10-2038I
10	Lower R. Access Panel	10-2037C	10-2037C	10-2037C	10-2037C	10-2037C	10-2037C	10-2037C	10-2037C
11	Lower L. Access Panel	210-677C	210-677C	210-677C	210-677C	210-677C	210-677C	210-677C	210-677C
12	Front Access Panel	10-2039C	10-2039C	10-2039C	10-2039C	10-2039C	10-2039C	10-2039C	10-2039C
13	Base Pan Assembly	210-705-3P	210-705-3P	210-705-3P	210-705-3P	210-705-3P	210-705-3P	210-705-3P	210-705-3P
NOT SHOWN	Filter Clip	Upper 10-2062	Left 10-2660	Upper 10-2062	Left 10-2660	Upper 10-2062	Left 10-2660	Upper 10-2062	Left 10-2660
NOT SHOWN	Filter Clip	Bottom 10-2063	Right 10-2661	Bottom 10-2063	Right 10-2661	Bottom 10-2063	Right 10-2661	Bottom 10-2063	Right 10-2661
16	Vent Cover Panel	10-2028	10-2028	10-2028	10-2028	10-2028	10-2028	10-2028	10-2028
17	Condenser Fan Shroud	210-672	210-672	210-672	210-672	210-672	210-672	210-672	210-672
18	Condenser Fan Motor	M205	M205	M206	MDC240201 (2)	M205	M205	M206	MDC240201 (2)
19	Compressor	CO32917	CO32917	CO32924	CO32122	CO32917	CO32917	CO32924	CO32122
20	Condenser Coil	320-648	321-8	320-672	321-16	320-649	321-10	320-672	321-16
21	Condenser Fan	FB1630	FB1630	FB1630	FB1630	FB1630	FB1630	FB1630	FB1630
22	Evaporator Coil	320-650	321-7	320-673	321-17	320-647	321-9	320-671	321-18
23	Metering Device								
	Heating Piston	N/A	N/A	N/A	N/A	CP81-42	CP81-42	CP81-46	CP81-46
	Cooling Piston	CP81-55	CP81-55	CP81-63	CP81-63	CP81-55	CP81-55	CP81-59	CP81-59
24	Heater Element								
	2KW	315-10-5	315-10-5	315-10-5	315-10-5	315-10-5	315-10-5	315-10-5	315-10-5
	3KW	315-10-4	315-10-4	315-10-4	315-10-4	315-10-4	315-10-4	315-10-4	315-10-4
	4KW	315-10-3	315-10-3	315-10-3	315-10-3	315-10-3	315-10-3	315-10-3	315-10-3
	5KW	315-10-2	315-10-2	315-10-2	315-10-2	315-10-2	315-10-2	315-10-2	315-10-2
	6KW	315-10-4 (2)	315-10-4 (2)	315-10-4 (2)	315-10-4 (2)	315-10-4 (2)	315-10-4 (2)	315-10-4 (2)	315-10-4 (2)
	8KW	315-10-3 (2)	315-10-3 (2)	315-10-3 (2)	315-10-3 (2)	315-10-3 (2)	315-10-3 (2)	315-10-3 (2)	315-10-3 (2)
	10KW	315-10-2 (2)	315-10-2 (2)	315-10-2 (2)	315-10-2 (2)	315-10-2 (2)	315-10-2 (2)	315-10-2 (2)	315-10-2 (2)
25	Evaporator Motor	M172	M176	M177	9MVX03301	M176	M176	M177	9MVX03301
26	Evaporator Blower Housing	210-673	210-673	210-673	210-673	210-673	210-673	210-673	210-673
NOT SHOWN	Hot Water Coil	320-674 (2R) 320-675 (3R)	320-674 (2R) 320-675 (3R)	320-674 (2R) 320-675 (3R)	320-674 (2R) 320-675 (3R)	N/A	N/A	N/A	N/A

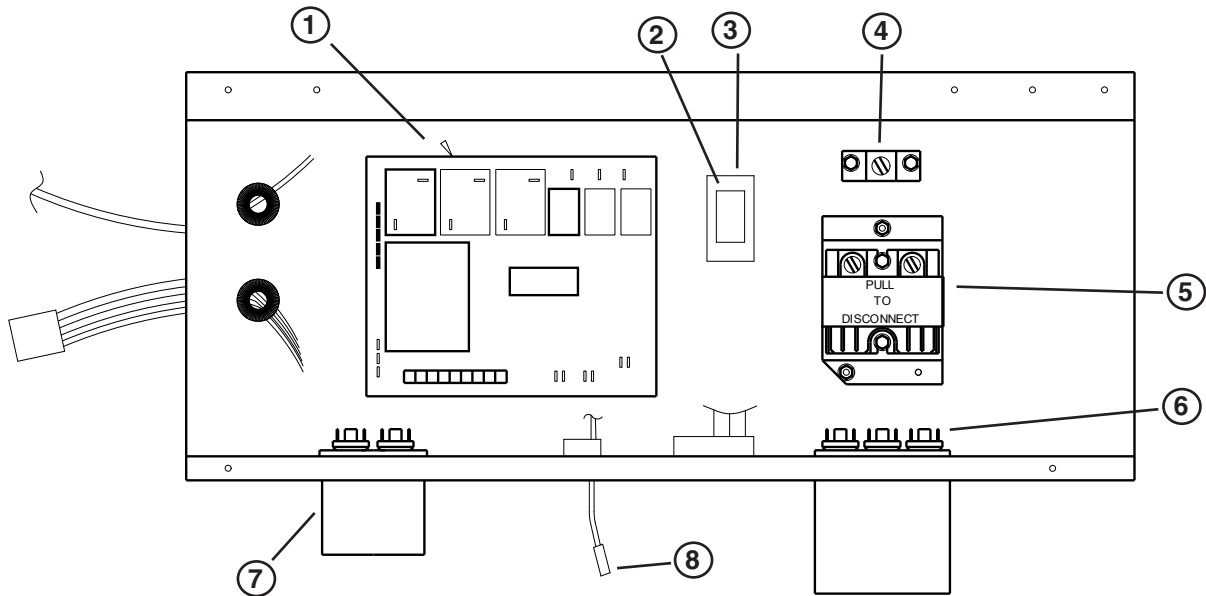
Note: 1) See pages 6 & 7 for Electrical Components
2) Contact factory - This motor is an ECM motor. Earlier 24SPU/SPX units require a different (non ECM) motor.

18/24/ SPX SERIES

3 / 06

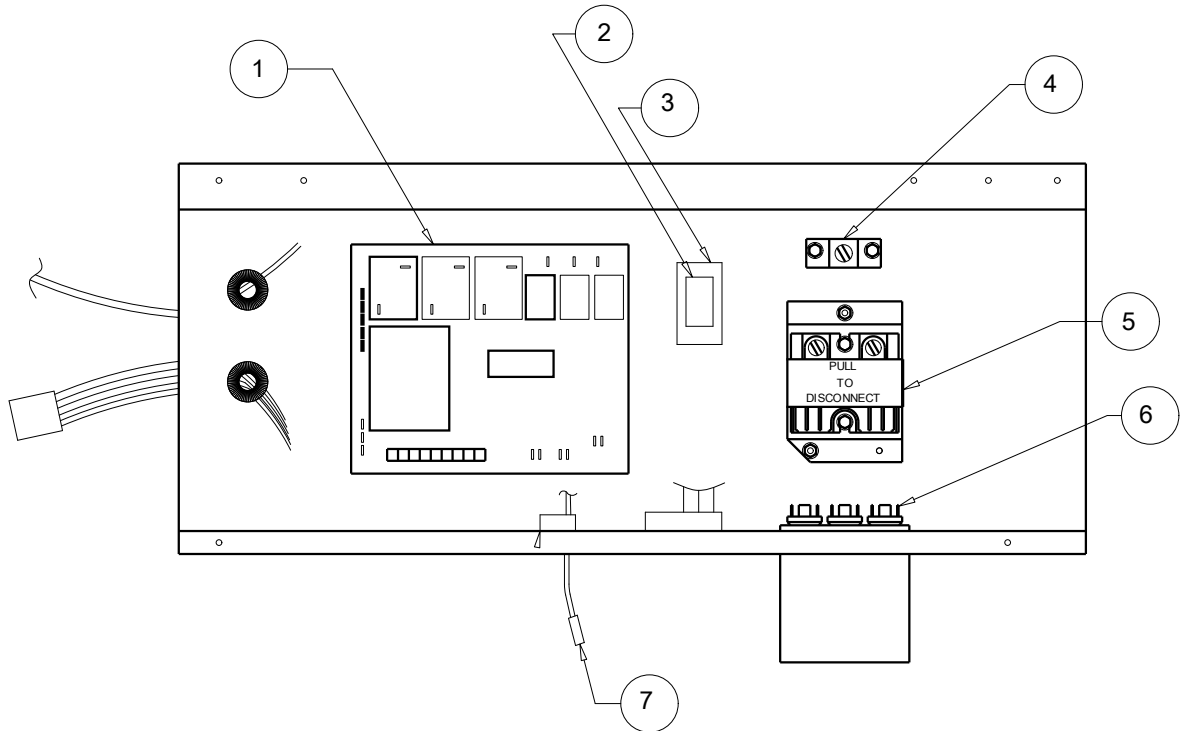


CONTROL PANEL 9 SPX(U), SPX(U)-HP, SPX(U)-HW SERIES						
ITEM #	DESCRIPTION	9SPX(U) 0KW	9SPX(U) 1 ELEMENT	9SPX(U)-HP 0KW	9SPX(U)-HP 1 ELEMENT	9SPX(U)-HW HOT WATER
	Control Panel Asm.	310-313-5 (SPU) 310-313-15 (SPX)	310-313-6 (SPU) 310-313-16 (SPX)	310-313-7 (SPU) 310-313-1	310-313-8 (SPU) 310-313-18 (SPX)	310-313-10 (SPU) 310-313-20 (SPX)
1	Control Board	919-17	919-17	919-17	919-17	919-17
2	Fuse	E16401	E16401	E16401	E16401	E16401
3	Fuse Block	E1640	E1640	E1640	E1640	E1640
4	Grounding Lug	EW107	EW107	EW107	EW107	EW107
5	Disconnect Switch	E184	E184	E184	E184	E184
6	Capacitor 25/5 MF 370V	E1500	E1500	E1500	E1500	E1500
7	Capacitor 5 MF 370V	E149	E149	E149	E149	E149
8	Low Ambient Switch	E100	E100	E100	E100	E100



CONTROL PANEL 12 SPX(U), SPX(U)-HP, SPX(U)-HW SERIES						
ITEM #	DESCRIPTION	12SPX(U) 0KW	12SPX(U) 1 ELEMENT	12SPX(U)-HP 0KW	12SPX(U)-HP 1 ELEMENT	12SPX(U)-HW HOT WATER
	Control Panel Asm.	310-313-1	310-313-2	310-313-3	310-313-4	310-313-9
1	Control Board	919-17	919-17	919-17	919-17	919-17
2	Fuse	E16401	E16401	E16401	E16401	E16401
3	Fuse Block	E1640	E1640	E1640	E1640	E1640
4	Grounding Lug	EW107	EW107	EW107	EW107	EW107
5	Disconnect Switch	E184	E184	E184	E184	E184
6	Capacitor 30/5 MF 370V	E1501	E1501	E1501	E1501	E1501
7	Capacitor 5 MF 370V	E149	E149	E149	E149	E149
8	Low Ambient Switch	E100	E100	E100	E100	E100

CONTROL PANEL 18 SPX(U), SPX(U)-HP, SPX(U)-HW SERIES								
ITEM #	DESCRIPTION	18SPX(U) 0KW	18SPX(U) 1 ELEMENT	18SPX(U) 2 ELEMENT	18SPX(U)-HP 0KW	18SPX(U)-HP 1 ELEMENT	18SPX(U)-HP 2 ELEMENT	18SPX(U)-HW HOT WATER
	Control Panel Asm.	310-307-1	310-307-2	310-307-3	310-307-4	310-307-5	310-307-6	310-307-12
1	Control Board	919-17	919-17	919-17	919-17	919-17	919-17	919-17
2	Fuse	E16401	E16401	E16401	E16401	E16401	E16401	E16401
3	Fuse Block	E1640	E1640	E1640	E1640	E1640	E1640	E1640
4	Grounding Lug	EW107	EW107	EW107	EW107	EW107	EW107	EW107
5	Disconnect Switch	E184	E184	E184	E184	E184	E184	E184
6	Capacitor 30/5 MF 370V	E1501	E1501	E1501	E1501	E1501	E1501	E1501
7	Low Ambient Switch	E100	E100	E100	E100	E100	E100	E100



CONTROL PANEL 24 SPX(U), SPX(U)-HP, SPX(U)-HW SERIES							
ITEM #	DESCRIPTION	24SPX(U) 0KW	24SPX(U) 1 ELEMENT	24SPX(U) 2 ELEMENT	24SPX(U)-HP 1 ELEMENT	24SPX(U)-HP 2 ELEMENT	24SPX(U)-HW HOT WATER
	Control Panel Asm.	310-307-9 (SPU) 310-307-16 (SPX)	310-307-10 (SPU) 310-307-17 (SPX)	310-307-11 (SPU) 310-307-18 (SPX)	310-307-7 (SPU) 310-307-14 (SPX)	310-307-8 (SPU) 310-307-15 (SPX)	310-307-13 (SPU) 310-307-19 (SPX)
1	Control Board	919-17	919-17	919-17	919-17	919-17	919-17
2	Fuse	E16401	E16401	E16401	E16401	E16401	E16401
3	Fuse Block	E1640	E1640	E1640	E1640	E1640	E1640
4	Grounding Lug	EW107	EW107	EW107	EW107	EW107	EW107
5	Disconnect Switch	E184	E184	E184	E184	E184	E184
6	Capacitor 30/5 MF 370V	E1502	E1502	E1502	E1502	E1502	E1502
7	Low Ambient Switch	E100	E100	E100	E100	E100	E100

