

FAN COILS



Use of the AHRI Certified TM Mark indicates a manufacturer's participation in the program. For verification of certification for individual products, go to www.ahridirectory.org.



WAHL--A

| Model Number | Tons | Nom. CFM (L/s) | Dimensions H x W x D in. (mm) | Filter Size in. (mm) | Ship Wt lbs. (kg) |
|--------------|------|----------------|--|---------------------------------|-------------------|
| WAHL604A | 5 | 1750 (825) | 59-3/16 x 24-11/16 x 22-1/16 (1503 x 627 x 560) | 23-5/16 x 21-1/2 (512 x 546) | 182 (83) |

- 5 tons
- Available for environmentally sound R-410A systems
- Factory installed TXV
- Sweat connections
- Primary and secondary drain fittings
- Multiple electrical entry locations
- Time delay relay (TDR)
- Field installed heater packages from 5 kW – 30 kW available separately
- HUD approved for manufactured housing
- 208/230-1-60 supply voltage
- Units tested and certified by manufacturer to achieve a 2% or less leakage rate at 1.0 inch water column
- 1 inch thick insulation with R value of 4.2
- Filter (washable) available as accessory
- ECM 5-speed motor
- Multiposition installation – upflow or horizontal left standard, horizontal right with minor modification (field convertible to downflow with available accessory kit)
- Low voltage circuit protective fuse (3 amp) inline on wire harness
- No Heat (Plug) Kit factory installed

LIMITED WARRANTY*

- 5 year parts limited warranty
 - With timely registration, an additional 5 year parts limited warranty
- * For owner occupied, residential applications only. See warranty certificate for complete details and restrictions, including warranty coverage for other applications.

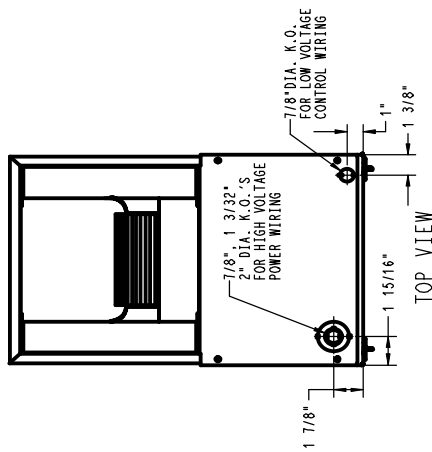
Product Specifications

| FAN COIL MODEL NUMBER IDENTIFICATION GUIDE | | | | | | | |
|---|------|---------------------------------|---|--------------------|---|---|---|
| Digit Position: | 1, 2 | 3 | 4 | 5, 6 | 7 | 8 | 9 |
| Example Part Number: | WA | H | L | 60 | 4 | A | 1 |
| WA = Air Handler | | | | | | | |
| H = High Efficiency Motor | | MOTOR TYPE | | | | | |
| L = Aluminum Tube, Aluminum Fin Evaporator Coil | | INSTALLATION TYPE | | | | | |
| 60 = 60,000 BTU/hr = 5 TONS | | NOMINAL COOLING CAPACITY | | | | | |
| 4 = R-410A | | | | REFRIGERANT | | | |
| SALES DIGIT | | | | | | | |
| EXTRA DIGIT | | | | | | | |

| ACCESSORIES PART NUMBER IDENTIFICATION GUIDE | | | | | |
|--|----|----|----|-----|---|
| | EB | AC | 01 | NCB | A |
| EB = Evaporator Blower | | | | | |
| AC = Accessory | | | | | |
| 01 = Product Identifier Number | | | | | |
| NCB = Non-Combustible Base Kit | | | | | |
| DFK = Down Flow Kit | | | | | |
| PLG = Power Plug (no heat kit) | | | | | |
| SPK = Single Point Wiring Kit | | | | | |
| FKS = Filter Kit Small | | | | | |
| FKM = Filter Kit Medium | | | | | |
| FKL = Filter Kit Large | | | | | |
| FKX = Filter Kit Extra Large | | | | | |
| CTK = Condensate Trap Kit (PVC pipe) | | | | | |
| Sales Code | | | | | |

| ELECTRIC HEATER MODEL NUMBER IDENTIFICATION GUIDE | | | | | | |
|--|-----|---------------------------|---|------------------------|---|---|
| | EHK | 05 | A | K | N | 1 |
| EHK = Electric Heater Kit | | | | | | |
| 05 = 5 kW | | | | | | |
| 07 = 7 kW | | | | | | |
| 09 = 9 kW | | | | | | |
| 10 = 10 kW | | | | | | |
| 15 = 15 kW | | | | | | |
| 18 = 18 kW | | | | | | |
| 20 = 20 kW | | | | | | |
| 25 = 25 kW | | | | | | |
| 30 = 30 kW | | | | | | |
| | | NOMINAL HEAT VALUE | | | | |
| Sales Code | | | | | | |
| K = 208 / 230 single-phase | | | | | | |
| H = 208 / 230, 3-phase | | | | | | |
| KC = 208 / 230, supplied as single phase, field convertible to 3-phase | | | | | | |
| HC = 208 / 230 supplied as 3-phase, field convertible to single phase | | | | | | |
| | | | | VOLTAGE (60 Hz) | | |
| Product Identifier | | | | | | |
| Engineering Code | | | | | | |

U.S. EXPORT CLASSIFICATION: EAR99
MEASUREMENT - ENGLISH



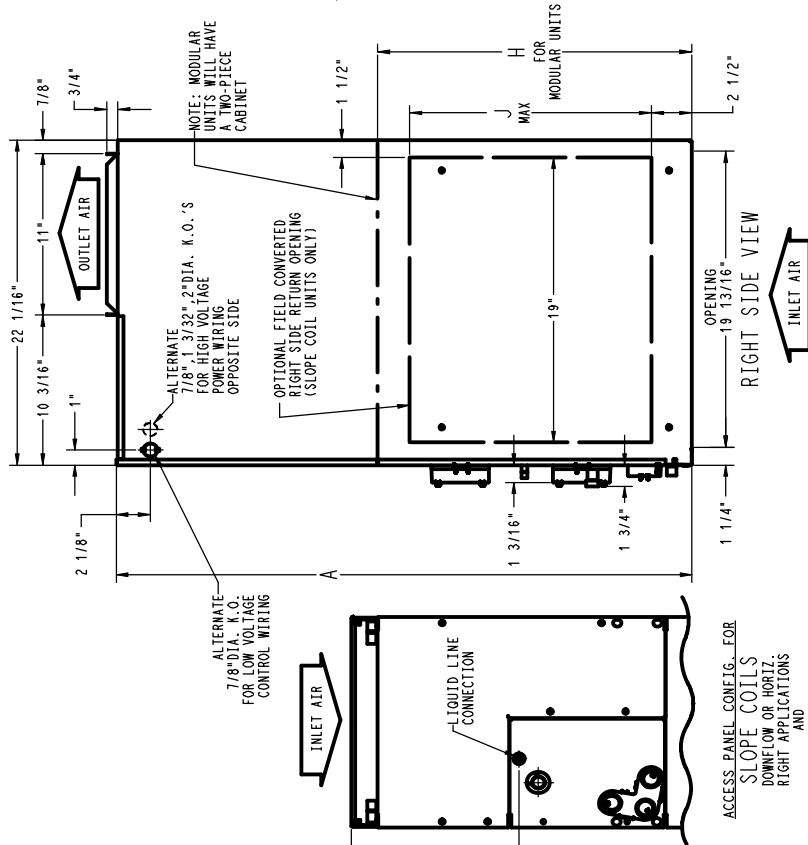
NOTE:

1. SERIES DESIGNATION IS THE 9TH POSITION OF UNIT PRODUCT NUMBER
2. ALL DIMENSIONS ARE IN " INCHES" UNLESS NOTED.

UNIT CONNECTION SIZES

SUCTION: 18 & 24 - 5/8" I.D. SWEAT
 30 & 36 - 3/4" I.D. SWEAT
 LIQUID: 3/8" I.D. SWEAT
 CONDENSATE: 3/4" FPT

NOTE: ALLOW 2 1/8" FROM FRONT FOR SERVICE

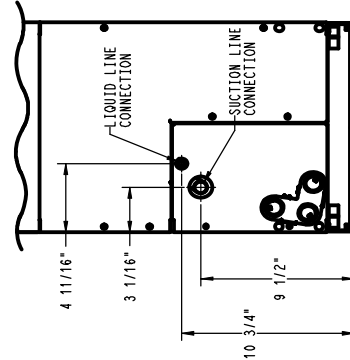


NOTE: ALLOW 2 1/8" FROM FRONT FOR SERVICE

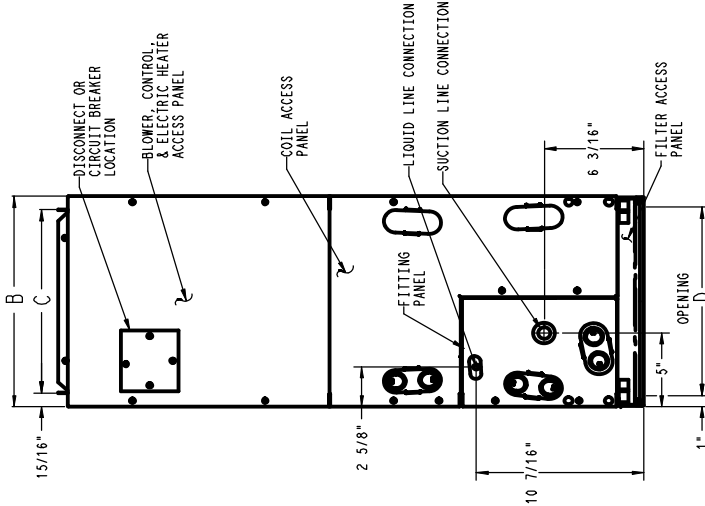
1. SERIES DESIGNATION IS THE 9TH POSITION OF UNIT PRODUCT NUMBER
2. ALL DIMENSIONS ARE IN " INCHES" UNLESS NOTED.

UNIT CONNECTION SIZES

SUCTION: 18 & 24 - 5/8" I.D. SWEAT
 30 & 36 - 3/4" I.D. SWEAT
 LIQUID: 3/8" I.D. SWEAT
 CONDENSATE: 3/4" FPT



ACCESS PANEL CONFIG. FOR SLOPE COILS DOWNFLOW OR HORIZ. RIGHT APPLICATIONS AND "A" COILS DOWNFLOW APPLICATIONS

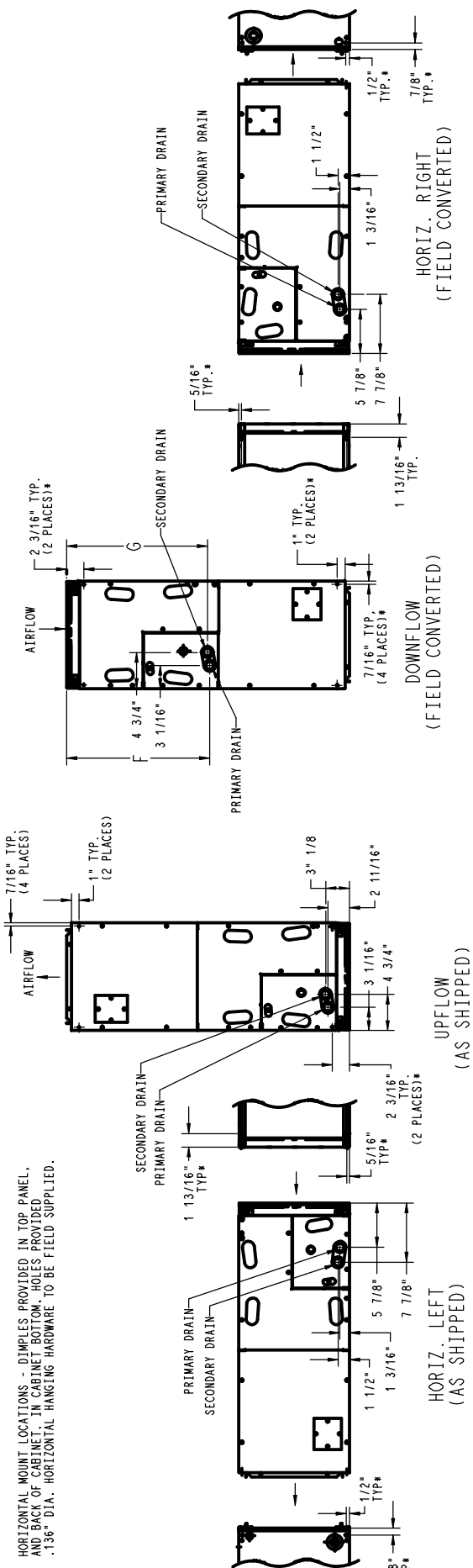
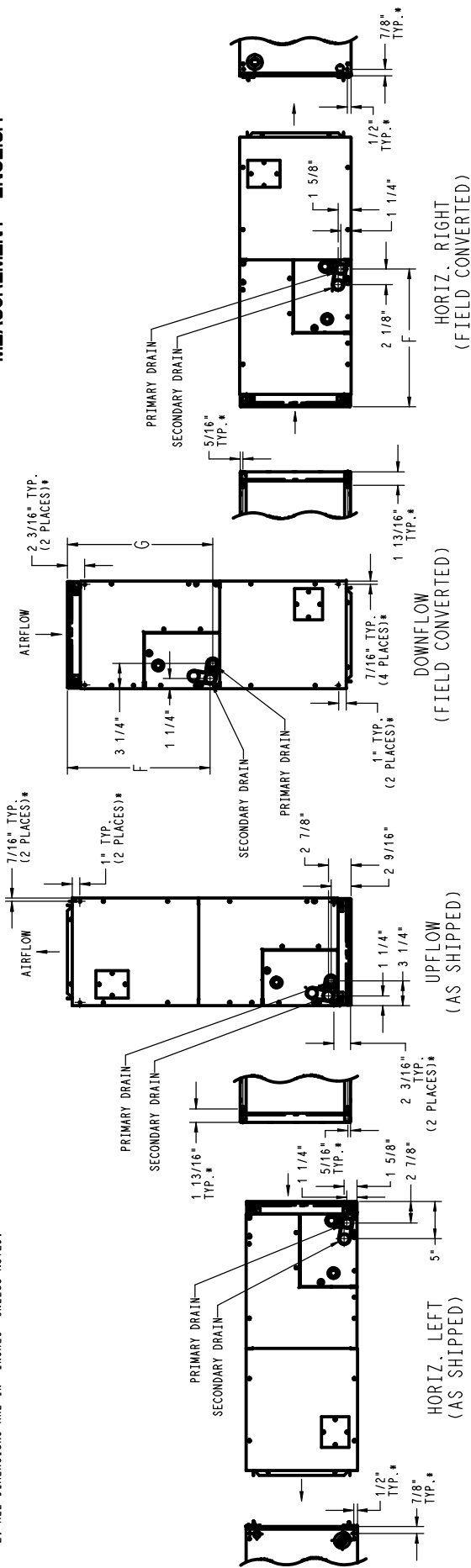


SHOWN WITH "A" COIL DETAILS CONNECTION LOCATIONS FOR UPFLOW OR HORIZ. APPLICATIONS

SLOPE COIL

U.S. EXPORT CLASSIFICATION: EAR99
MEASUREMENT- ENGLISH

- NOTES:
1. CONDENSATE PAN DRAIN CAPS NOT SHOWN FOR CLARITY.
2. ALL DIMENSIONS ARE IN "INCHES" UNLESS NOTED.

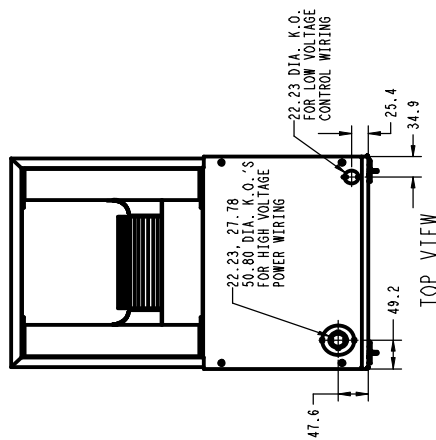


* HORIZONTAL MOUNT LOCATIONS - DIMPLES PROVIDED IN TOP PANEL, AND BACK OF CABINET. IN CABINET BOTTOM, HOLES PROVIDED .136" DIA. HORIZONTAL HANGING HARDWARE TO BE FIELD SUPPLIED.

A-COIL

SD5204-4 Rev. B

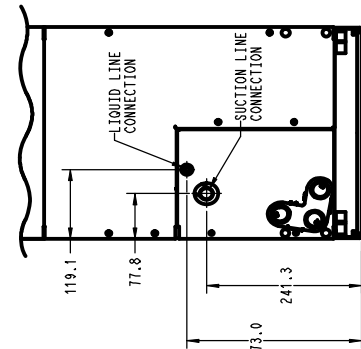
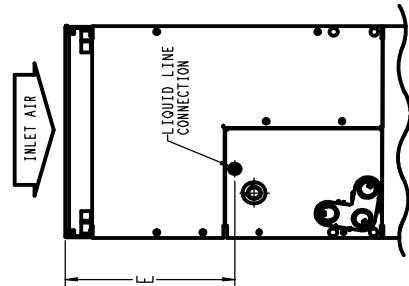
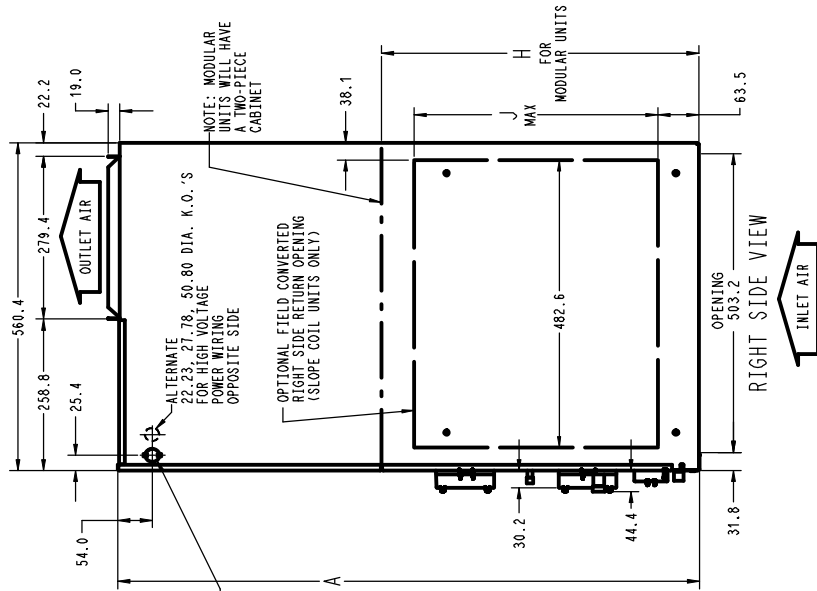
U.S. EXPORT CLASSIFICATION: EAR99
MEASUREMENT - METRIC "SI"



NOTE:
1. SERIES DESIGNATION IS THE 9TH POSITION OF UNIT PRODUCT NUMBER
2. ALL DIMENSIONS ARE IN "MM" UNLESS NOTED.

UNIT CONNECTION SIZES
SUCTION: 18 & 24 - 15.88 I.D. SWEAT
30 & 36 - 19.05 I.D. SWEAT
42 THRU 60 - 22.23 I.D. SWEAT
LIQUID: 9.53 I.D. SWEAT
CONDENSATE: 19.0 FPT

NOTE: ALLOW 533.4 FROM FRONT FOR SERVICE



ACCESS PANEL CONFIG. FOR SLOPE COILS DOWNFLOW OR HORIZ. RIGHT APPLICATIONS AND "A" COILS DOWNFLOW APPLICATIONS

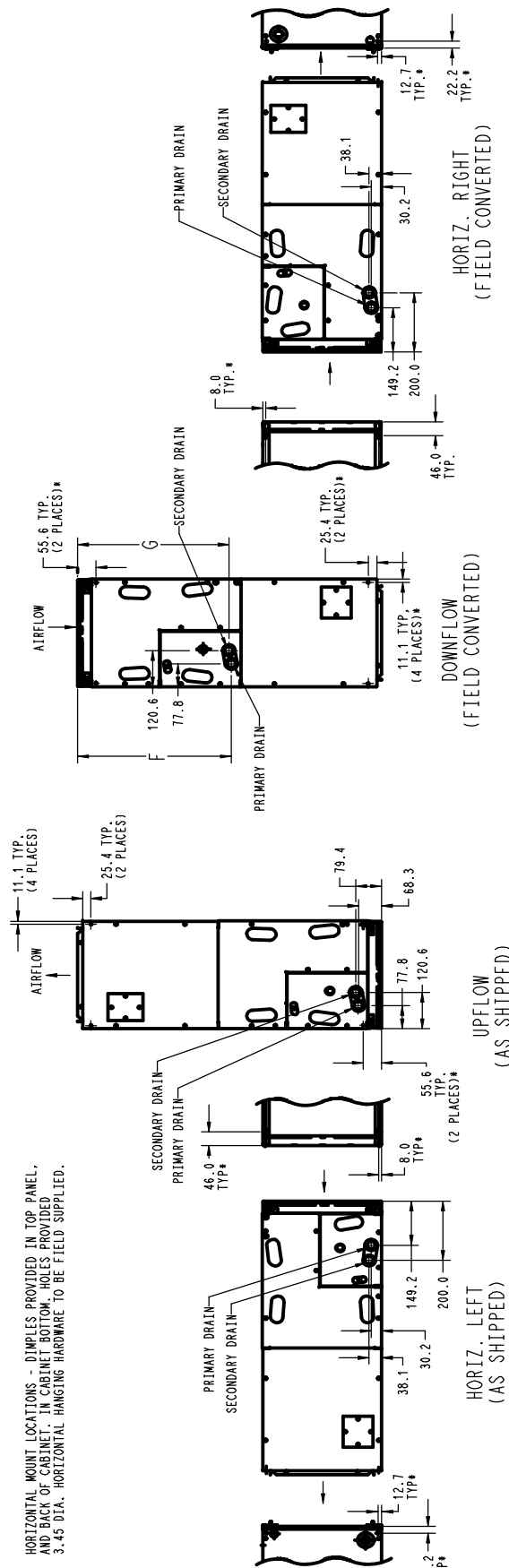
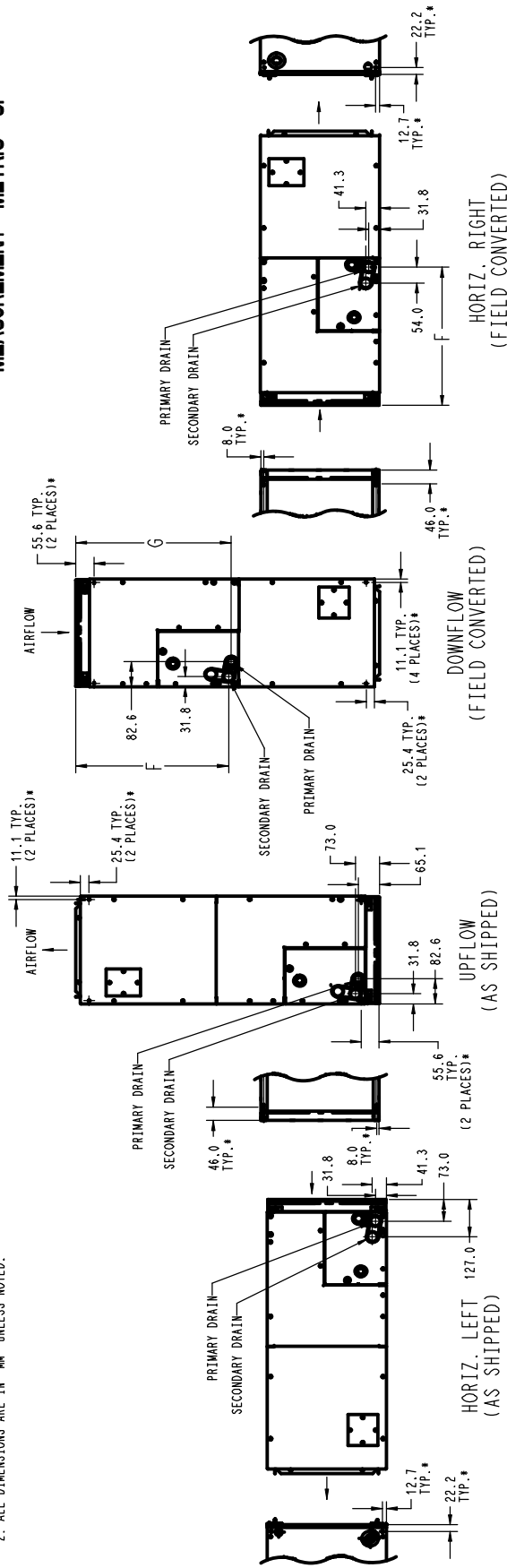
SLOPE COIL DETAILS CONNECTION LOCATIONS SHOWN FOR UPFLOW OR HORIZ. LEFT APPLICATIONS

FRONT VIEW SHOWN WITH "A" COIL DETAILS CONNECTION LOCATIONS FOR UPFLOW OR HORIZ. APPLICATIONS

U.S. EXPORT CLASSIFICATION: EAR99
MEASUREMENT- METRIC "SI"

SLOPE COIL

- NOTES:
1. CONDENSATE PAN DRAIN CAPS NOT SHOWN FOR CLARITY.
2. ALL DIMENSIONS ARE IN "MM" UNLESS NOTED.



* HORIZONTAL MOUNT LOCATIONS - DIMPLES PROVIDED IN TOP PANEL, AND BACK OF CABINET. IN CABINET BOTTOM, HOLES PROVIDED 3.45 DIA. HORIZONTAL HANGING HARDWARE TO BE FIELD SUPPLIED.

A-COIL

DIMENSIONAL DATA (refer to drawings)

| Model WAHL | Dimension | A | B | C | D | E | F | G | H | J | Coil | Ship Wt. Lbs(kg) |
|------------|-----------|---------|----------|--------|----------|--------|----------|--------|---------|---|------|------------------|
| 60 | inches | 59-3/16 | 24-11/16 | 22-3/4 | 22-11/16 | 25-1/4 | 32-15/16 | 32-5/8 | 34-1/16 | - | A | 175 |
| | mm | 1503 | 627 | 578 | 576 | 641 | 837 | 829 | 865 | - | A | 79 |

PHYSICAL DATA

| Model | | 60 |
|--|-------------------|--|
| Metering Device | | TXV |
| Blower Data | CFM (nominal) | 1750 |
| | Motor Type | ECM 5-Speed |
| | HP | 3/4 |
| Filter Data (washable, available as accessory) | | 23-5/16 x 21-1/2 |
| Coil Data | | Face Area ft ² (m ²) 5.9 (0.5) |
| Refrigerant Line Connections (sweat) | Liquid inch (mm) | 3/8 (10) |
| | Suction inch (mm) | 7/8 (22) |

ELECTRICAL DATA, FAN COIL ONLY WITHOUT ELECTRIC HEAT

| Model | 208/230V, single phase, 60 Hz | | |
|--------|-------------------------------|--------------------------------|---|
| | Motor Full Load Amps (FLA) | Minimum Circuit Ampacity (MCA) | Maximum Fuse/Ckt Bkr Amps (Max OverCurrent Protection - MOCP) |
| WAHL60 | 6.0 | 7.5 | 15 |

AIRFLOW PERFORMANCE - CFM at a given Speed and Static reading

| Model | Blower Speed | Total Static (inches water column) | | | | | |
|--------|--------------|------------------------------------|------|------|------|------|------|
| | | 0.10 | 0.20 | 0.30 | 0.40 | 0.50 | 0.60 |
| WAHL60 | Tap 5 | 1897 | 1867 | 1836 | 1808 | 1774 | 1736 |
| | Tap 4 | 1817 | 1785 | 1757 | 1724 | 1693 | 1655 |
| | Tap 3 | 1817 | 1785 | 1757 | 1724 | 1693 | 1655 |
| | Tap 2 | 1657 | 1621 | 1589 | 1557 | 1518 | 1474 |
| | Tap 1 | 1443 | 1412 | 1377 | 1332 | 1286 | 1243 |

— Airflow outside 450 cfm/ton.

NOTES:

- Airflow based upon dry coil at 230v with factory-approved filter and electric heater (3 element heater size). Airflow at 208 volts is approximately the same as 230 volts because the ECM motor is a constant torque motor. The torque doesn't drop off at the speeds the motor operates.
- To avoid potential for condensate blowing out of drain pan prior to making drain trap: Return static pressure must be less than 0.40 in. wc. Horizontal applications must have supply static greater than 0.20 in. wc.
- Airflow above 400 cfm/ton could result in condensate blowing off coil or splashing out of drain pan.

PRESSURE DROP ACROSS FILTER (inches of water column)

| Model WAHL | CFM | | | | | | | | |
|------------|-----|-----|-----|------|------|------|------|------|------|
| | 400 | 600 | 800 | 1000 | 1200 | 1400 | 1600 | 1800 | 2000 |
| 60 | — | — | — | — | — | — | .086 | .105 | .130 |

STATIC PRESSURE CORRECTION FROM DRY TO WET COIL (inches of water column)

| Model WAHL | CFM | | | | | | | | | | | | | | | |
|------------|-----|-----|-----|-----|-----|------|------|------|------|------|------|------|------|------|------|------|
| | 500 | 600 | 700 | 800 | 900 | 1000 | 1100 | 1200 | 1300 | 1400 | 1500 | 1600 | 1700 | 1800 | 1900 | 2000 |
| 60 | — | — | — | — | — | — | — | — | — | — | — | .049 | .054 | .059 | .065 | .070 |

MINIMUM CFM WHEN USING ELECTRIC HEAT

| Model WAHL | HEATER kW | | | | | | | | | |
|------------|-----------|---|------|------|------|------|------|------|------|------|
| | 3 | 5 | 8 | 9 | 10 | 15 | 18 | 20 | 24 | 30 |
| 60 | — | — | 1750 | 1750 | 1750 | 1750 | 1750 | 1750 | 1750 | 1750 |

Note: Speed Tap 4 (white wire) is used for electric heat only. White wire must remain on tap 4.

STATIC PRESSURE CORRECTION FOR ELECTRIC HEATERS (inches of water column)

Airflow performance chart was developed using fan coils with 15 kW electric heaters (3 elements) in the 60 model sizes. When using a different number of heater elements, adjust the static pressure numbers by adding or subtracting the values in this table (for a given CFM, more electric heater elements create higher static pressure drop).

| Model Size | Heater kW | | | | | |
|------------|-------------------------|--------|---------|---------|-------|---------------|
| | No Heater | 3 or 5 | 8 or 10 | 9 or 15 | 20 | 18, 24, or 30 |
| | Number of Heat Elements | | | | | |
| 60 | 0 | 1 | 2 | 3 | 4 | 6 |
| | +0.04 | - | +0.02 | 0 | -0.02 | -0.10 |

ELECTRIC HEATER ELECTRICAL DATA

| Heater Model | Heater kW | | PHASE | INTERNAL CIRCUIT PROTECTION | HEATER AMPS 208/230V | | | Min Ampacity ☆ 208/230V | | | Min Wire Size (AWG) 208/230V 1 | | | Min Gnd Wire Size 208/230V | | | Max Fuse/Ckt Bkr Amps 208/230V | | | Max Wire Length 208/230V (FT) †† | | | | |
|--------------|-----------|------|-------|-----------------------------|----------------------|--------------|-----------|-------------------------|----------------|--------------|--------------------------------|-------|----------------|----------------------------|-------|-------|--------------------------------|--------------|-------|----------------------------------|-------|-------|-------|-------|
| | 230v | 208v | | | Single Circuit | Dual Circuit | | | Single Circuit | Dual Circuit | | | Single Circuit | Dual Circuit | | | Single Circuit | Dual Circuit | | | | | | |
| | | | | | | L1,L2 | L3,L4 | L3,L4 | | L1,L2 | L3,L4 | L3,L4 | | L1,L2 | L3,L4 | L3,L4 | | L1,L2 | L3,L4 | L3,L4 | | | | |
| EHK05AKN | 5 | 3.8 | 1 | None | 18.1/20.0 | — | — | 31.2/33.5 | — | — | 8/8 | — | — | 10/10 | — | — | 35/35 | — | — | 85/88 | — | — | L1,L2 | L3,L4 |
| EHK05AKB | 5 | 3.8 | 1 | Ckt Bkr | 18.1/20.0 | — | — | 31.2/33.5 | — | — | 8/8 | — | — | 10/10 | — | — | 35/35 | — | — | 85/88 | — | — | — | — |
| EHK07AKN | 8 | 6.0 | 1 | None | 28.9/32.0 | — | — | 44.7/48.5 | — | — | 8/8 | — | — | 10/10 | — | — | 45/50 | — | — | 59/60 | — | — | — | — |
| EHK07AKB | 8 | 6.0 | 1 | Ckt Bkr | 28.9/32.0 | — | — | 44.7/48.5 | — | — | 8/8 | — | — | 10/10 | — | — | 45/50 | — | — | 59/60 | — | — | — | — |
| EHK09AKN† | 9 | 6.8 | 1 | None | 32.8/36.0 | — | — | 49.5/53.5 | — | — | 8/6 | — | — | 10/10 | — | — | 50/60 | — | — | 54/87 | — | — | — | — |
| EHK09AKB | 9 | 6.8 | 3 | None | 18.8/20.8 | — | — | 32.0/34.5 | — | — | 8/8 | — | — | 10/10 | — | — | 35/35 | — | — | 83/85 | — | — | — | — |
| EHK10AKN | 10 | 7.5 | 1 | None | 36.2/40.0 | — | — | 53.8/58.5 | — | — | 6/6 | — | — | 10/10 | — | — | 60/60 | — | — | 78/80 | — | — | — | — |
| EHK10AKB | 10 | 7.5 | 1 | Ckt Bkr | 36.2/40.0 | — | — | 53.8/58.5 | — | — | 6/6 | — | — | 10/10 | — | — | 60/60 | — | — | 78/80 | — | — | — | — |
| EHK15AKF | 15 | 11.3 | 1 | Fuse | 54.2/59.9 | 36.2/40.0 | 18.1/20.0 | 76.3/83.4 | 53.8/58.5 | 22.7/25.0 | 4/4 | 6/6 | 10/10 | 8/8 | 10/10 | 10/10 | 80/90 | 60/60 | 25/25 | 88/89 | 78/80 | 78/80 | 75/76 | |
| EHK15AKB | 15 | 11.3 | 1 | Ckt Bkr | — | 36.2/40.0 | 18.1/20.0 | — | 53.8/58.5 | 22.7/25.0 | — | 6/6 | 10/10 | 10/10 | 10/10 | — | 60/60 | 25/25 | — | 78/80 | 78/80 | 75/76 | 75/76 | |
| EHK15AHN | 15 | 11.3 | 3 | None | 31.3/34.6 | — | — | 47.7/51.8 | — | — | 8/6 | — | — | 10/10 | — | — | 50/60 | — | — | 56/90 | — | — | — | |
| EHK18AHN | 18 | 13.5 | 3 | None | 37.6/41.5 | — | — | 55.5/60.4 | — | — | 6/6 | — | — | 10/8 | — | — | 60/70 | — | — | 76/77 | — | — | — | |
| EHK20AKF | 20 | 15.0 | 1 | Fuse | 72.3/79.9 | 36.2/40.0 | 36.2/40.0 | 96.9/108.4 | 53.8/58.5 | 45.3/50.0 | 3/2 | 6/6 | 8/8 | 8/6 | 10/10 | 10/10 | 100/110 | 60/60 | 50/50 | 85/109 | 78/80 | 78/80 | 59/59 | |
| EHK20AKB | 20 | 15.0 | 1 | Ckt Bkr | — | 36.2/40.0 | 36.2/40.0 | — | 53.8/58.5 | 45.3/50.0 | — | 6/6 | 8/8 | — | 10/10 | 10/10 | — | 60/60 | 50/50 | — | 78/80 | 78/80 | 59/59 | |
| EHK25AHCF† | 24 | 18.0 | 3 | Fuse | 50.1/55.4 | — | — | 71.2/77.8 | — | — | 4/4 | — | — | 8/8 | — | — | 80/80 | — | — | 94/95 | — | — | — | |
| EHK25AHCF† | 24 | 18.0 | 1 | Fuse | 86.7/95.5 | — | — | 116.9/127.9 | — | — | 1/1 | — | — | 6/6 | — | — | 125/150 | — | — | 115/116 | — | — | — | |
| EHK30AHCF† | 30 | 22.5 | 3 | Fuse | 62.6/69.2 | — | — | 86.8/95.0 | — | — | 3/3 | — | — | 8/8 | — | — | 90/100 | — | — | 97/98 | — | — | — | |
| EHK30AHCF† | 30 | 22.5 | 1 | Fuse | 109.0/120.0 | — | — | 144.8/158.5 | — | — | 0/00 | — | — | 6/6 | — | — | 150/175 | — | — | 117/150 | — | — | — | |

FIELD MULTIPPOINT WIRING OR 24 AND 30 KW SINGLE PHASE

| Heater Model | Heater kW | | P H A S E | Heater Amps 208/230V | | | Minimum Circuit Ampacity 208/230V ☆ | | | Minimum Wire Size (AWG) 208/230V † | | | Min Gnd Wire Size 208/230V | | | Max Fuse/Ckt Bkr Amps 208/230V | | | Max Wire Length 208/230V (FT) †† | | |
|--------------|-----------|------|-----------------------|----------------------|-----------|-----------|-------------------------------------|-----------|--------|------------------------------------|--------|--------|----------------------------|--------|--------|--------------------------------|--------|--------|----------------------------------|--------|--------|
| | 230V | 208V | | L1, L2 | L3, L4 | L5, L6 | L1, L2 | L3, L4 | L5, L6 | L1, L2 | L3, L4 | L5, L6 | L1, L2 | L3, L4 | L5, L6 | L1, L2 | L3, L4 | L5, L6 | L1, L2 | L3, L4 | L5, L6 |
| | | | | | | | | | | | | | | | | | | | | | |
| EHK25AHCF† | 24 | 18.0 | 1 | 28.9/32.0 | 28.9/32.0 | 28.9/32.0 | 44.7/48.5 | 36.2/40.0 | 8/8 | 8/8 | 8/8 | 10/10 | 45/50 | 40/40 | 40/40 | 59/60 | 73/73 | 73/73 | | | |
| EHK30AHCF† | 30 | 22.5 | 1 | 36.2/40.0 | 36.2/40.0 | 36.2/40.0 | 53.8/58.5 | 45.3/50.0 | 6/6 | 8/8 | 8/8 | 10/10 | 60/60 | 50/50 | 50/50 | 78/80 | 59/59 | 59/59 | | | |

Notes:

- 1 Copper wire must be used. If other than uncoated (non-plated), 75° C ambient, copper wire (solid wire for 10 AWG and smaller, stranded wire for larger than 10 AWG) is used, consult applicable tables of the National Electric Code (ANSI/NFPA 70).
- ☆ Includes blower motor amps of largest Fan Coil used with heater.
- † Supplied as single phase, field convertible to 3-phase.
- ‡ Supplied as 3-phase, field convertible to single phase, single or multiple supply circuits.
- †† Length shown is as measured one way along wire path between unit and service panel for a voltage drop not to exceed 2%.

| ACCESSORIES | | |
|--|---|--|
| Part Number | Description | Use with |
| EBAC01DSC | Disconnect Kit | All Single Phase Heaters 5 kW thru 10 kW |
| EBAC04NCB | Downflow Base Kit | 60 |
| EBAC02DFA | Downflow Conversion Kit – “A” Coil | 60 |
| EBAC01SPK | Single Point Wiring Kit | Only for 15 kW & 20 kW fused heaters |
| AMFK20SPA or Square D® part # QOU14100JBAF | Single Point Wiring Kit – Square D® Jumper Bar Assembly | Only for use with breaker heaters |
| EBAC01FKX | Filter Kit (washable, box of 12) | 60 |
| NASA00401FR | Standard Filter Rack, quantity 2 (12 x 20 x 1) | 60 |
| EBAC01PLG | No Heat (Plug) Kit (box of 6) | Factory Installed |
| EBAC01CTK | PVC Condensate Trap Kit (box of 50) | 60 |
| EBAC01GSK | Downflow Gasket Kit | Required for horizontal right and downflow |

| ELECTRIC HEATERS | |
|-------------------------|--|
| Part Number | Description |
| EHK05AKN | 5 kW, single phase, no internal circuit protection |
| EHK05AKB | 5 kW, single phase, with circuit breakers |
| EHK07AKN | 8 kW, single phase, no internal circuit protection |
| EHK07AKB | 8 kW, single phase, with circuit breakers |
| EHK09AKCN | 9 kW, supplied as single phase, field convertible to 3-phase, no internal circuit protection |
| EHK10AKN | 10 kW, single phase, no internal circuit protection |
| EHK10AKB | 10 kW, single phase, with circuit breakers |
| EHK15AKF | 15 kW, single phase, with fuses |
| EHK15AKB | 15 kW, single phase, with circuit breakers |
| EHK15AHN | 15 kW, 3-phase, no internal circuit protection |
| EHK18AHN | 18 kW, 3-phase, no internal circuit protection |
| EHK20AKF | 20 kW, single phase, with fuses |
| EHK20AKB | 20 kW, single phase, with circuit breakers |
| EHK25AHCF | 24 kW, supplied as 3-phase, field convertible to single phase, with fuses |
| EHK30AHCF | 30 kW, supplied as 3-phase, field convertible to single phase, with fuses |