



CROWN BOILER CAYMAN

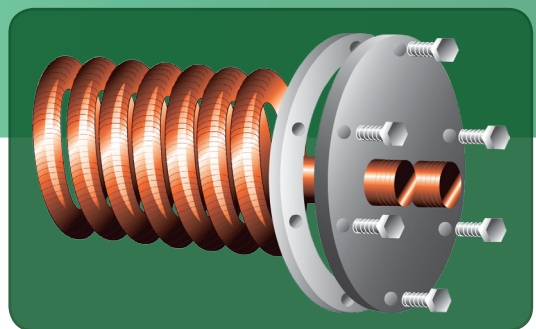
GAS-FIRED HOT WATER BOILER WITH
TANKLESS COIL FOR DOMESTIC
HOT WATER

Designed for reliability, efficiency and performance. For residential and small commercial applications with approved chimney.

- ♦ Cast iron heat exchanger
- ♦ Stainless steel burners
- ♦ Built-in draft diverter to fit low spaces
- ♦ Automatic vent damper included*
- ♦ Attractive, rugged jacket
- ♦ Fully assembled or available as knock-down package for boilers above 310 MBH
- ♦ Approved for installation on non-carpeted combustible surfaces
- ♦ Nine sizes from 103 to 379 MBH

Tankless Coil Water Heater

The Cayman's tankless coil eliminates the need for a storage tank. It is therefore ideal for installation in small spaces.

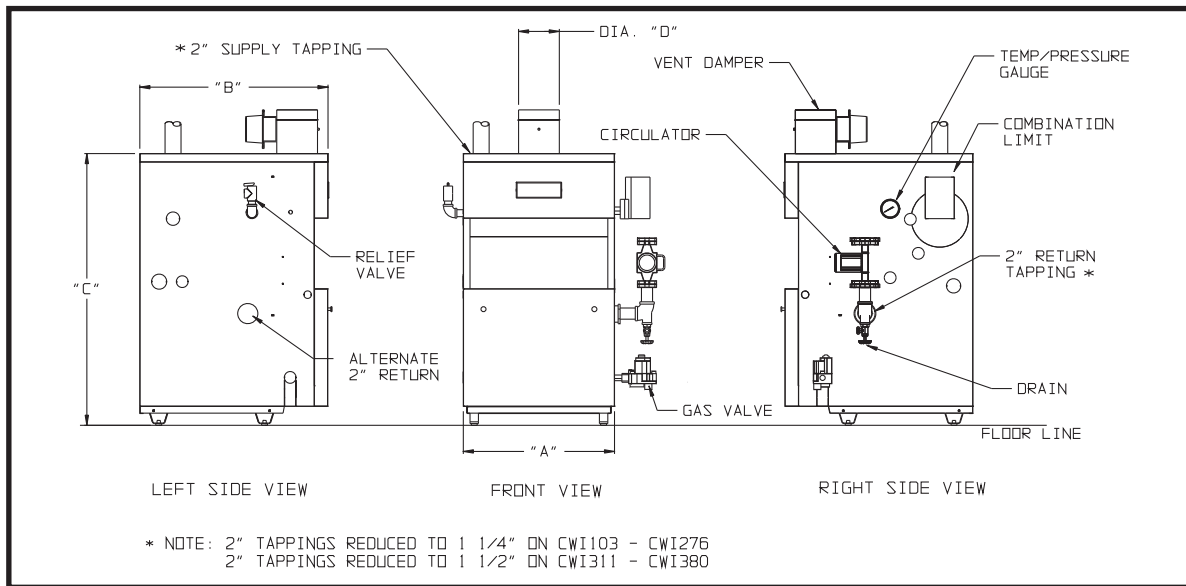


*CW1069 through CW1276
See back side for piping configurations.



CWI SERIES - CAYMAN

TECHNICAL SPECIFICATIONS



MODEL	NO. OF SECS.	NATURAL OR LP GAS*				TANKLESS HEATER RATING (GAL/MIN)	DIMENSIONS (IN)				WATER VOLUME (GAL)
		INPUT (MBH)	HEATING CAPACITY (MBH)	AHRI NET RATING (MBH)	AFUE %		"A"	"B"	"C"	"D"	
CWI103	4	103	86	75	83.1	2.50	16	28	40-7/16	5	10.0
CWI138	5	138	115	100	83.1	3.00	19-1/4	28	40-7/16	6	12.2
CWI172	6	172	144	125	83.2	3.50	22-1/2	28	40-7/16	6	14.4
CWI207	7	207	173	150	83.2	3.75/4.50	25-3/4	30	40-7/16	7	16.6
CWI241	8	241	201	175	83.2	3.75/4.75***	29	30	40-7/16	7	18.8
CWI276	9	276	230	200	83.2	4.00/5.25***	32-1/4	30	40-7/16	8	21.0
CWI311	10	310	252	219	81.4**	4.00/5.25***	35-1/2	30	45-7/16	8	23.2
CWI346	11	345	281	244	81.4**	4.00/5.25***	38-3/4	30	45-7/16	9	25.4
CWI380	12	379	309	269	81.4**	4.00/5.25***	42	30	45-7/16	9	27.6

*CWI311-CWI380 not available for use with LP gas.

**Thermal efficiency

***Rating with optional "high capacity" tankless heater

1. USA - For altitudes above 2,000 ft. ratings should be reduced at the rate of 4% for each 1,000 ft above sea level.

2. AHRI Net Ratings shown are based on a piping and pick-up allowance of 1.15.

All residential cast iron water boilers include a full one year warranty. A limited, lifetime warranty is provided for the cast iron heat exchanger. A 5-year and a 10-year extended warranty covering parts and labor are also available. Visit CrownBoiler.com for complete details.



The Mega-Stor® indirect water heater utilizes the energy created by your boiler to produce abundant hot water for your home. Mega-Stor water heaters come in a variety of sizes from 26 to 119 gallons to meet a multitude of residential and commercial needs.

Specifications are subject to change without notice.

ADDITIONAL FEATURES/BENEFITS

- Available with natural or LP gas
- Roll-out switch; blocked vent switch; ASME relief valve (30 PSI)
- High performance circulator
- Alternate 2" return tapping



www.crownboiler.com | Philadelphia PA

CWI - 9/12
PN980532 - R2