

# PRODUCT CATALOG 2019



1920 East Hallandale Beach Blvd. Suite 900A  
Hallandale Beach, FL 33009





## What is Carbontec

---

Carbontec is a new radiant heating material designed to deliver silent, odorless, and efficient infrared heat into your home or business. Carbontec is measured at a staggering 0.2 mm thin, making it the thinnest most powerful radiant heating material available today! Carbontec is discreetly installed underneath your floor coverings for luxurious heat that will not occupy your home or business space with clunky radiators, furnaces, boilers, or pipes. Carbontec can also be applied directly onto ceiling space if you are interested in superior heat and comfort that requires no blower fan for heat delivery. Radiant heating is the most efficient transfer of energy in nature because it requires no medium, no external force like a blower fan for a transfer of energy to occur. You and your loved ones will not depend on a meters long duct run for your heat delivery, because you will be sitting in the same space as your heater element, avoiding parasitic heat loss when heated air travels through your ducting. Carbontec is not only an efficient way to heat your home; it is the smarter way to heat your home.





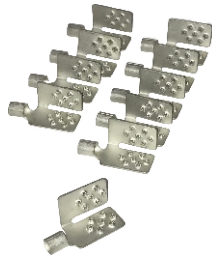
# Carbontec 251-L-500-6



Carbontec 251-L



500W Transformer



Splice Connectors

#### Kit Includes:

- Installation Manual
- Warning Stickers
- Troubleshooting Guide
- Caution Document
- Registration Form
- 500 Watt 24 VAC Transformer
- 5 Splice Connector Crimps
- 6 Linear Feet of Carbontec Material
  - 60-120 Ft<sup>2</sup> Room Size
  - 6 Ft = 241 Watts

#### PROSPECTIVE PROJECT SIZES

**60-120 Ft<sup>2</sup>**

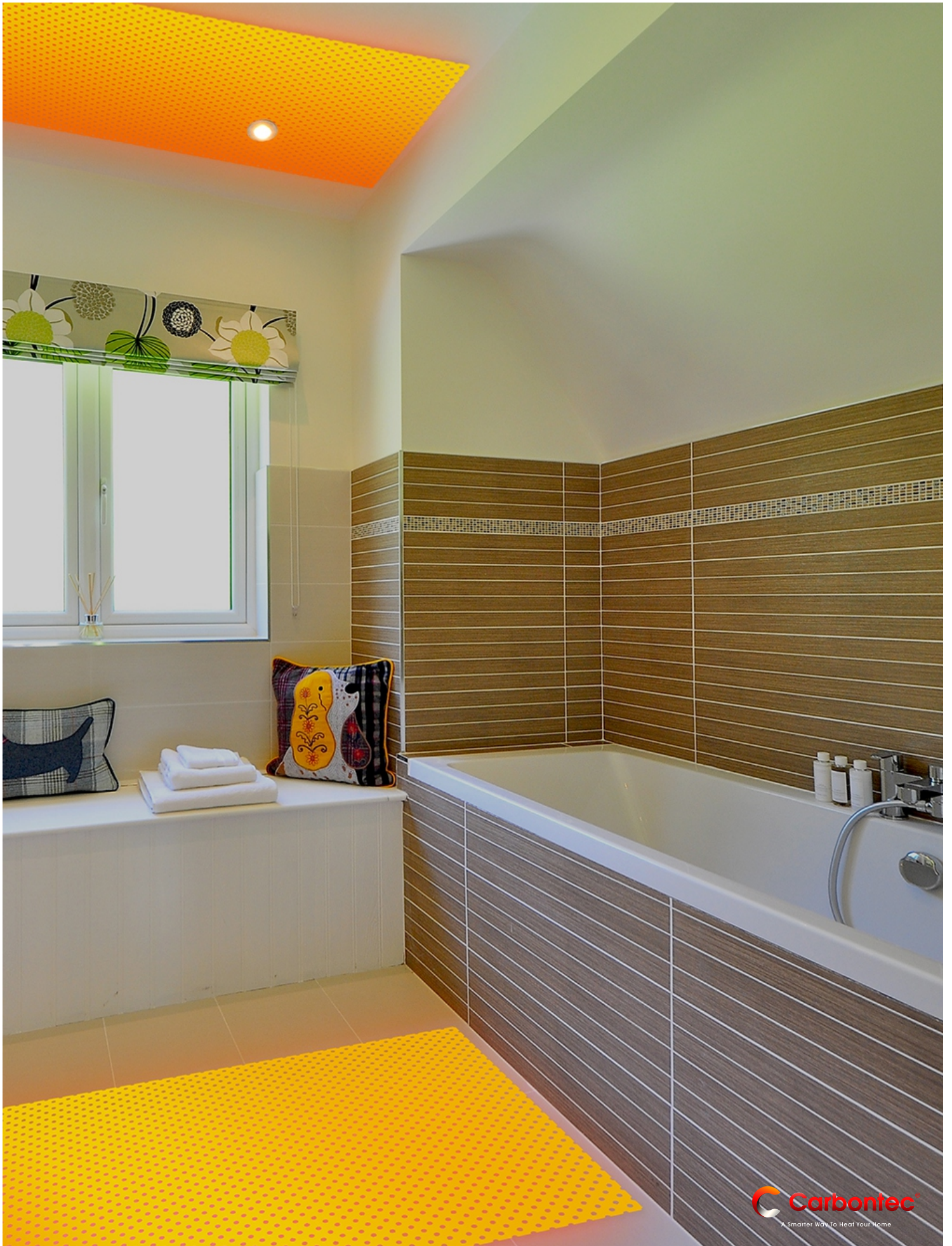
#### TOTAL BTU OUTPUT

**823.2 BTU**

#### TECHNICAL SPECIFICATIONS

Power Input	120 VAC
Output (Carbontec Heating Film)	22.8 W/ft <sup>2</sup>
Output Per Foot	40.2 W/ft
Secondary Voltage	24 Volts AC
Primary Circuit Breaker Protection	Building Circuit Breaker
Secondary Circuit Breaker Protection	25 Amps
Expected Operating Surface Temperatures	70°F - 104°F (21°C - 42°C)
Min. Bending Radius	2 Inches (50mm)
Material	PET Film with Carbon Fibers and Fillers
Primary Conductor/Transformer	12 AWG (to the Mains and/or Controller)
Secondary Conductor/Transformer	10 AWG, Max. 30 Feet (10 m) in Length
Heating Dimensions, Width	23 Inches (58.42 cm), 21 Inches (53.34 cm) Net Heating Width
Min. Length	3 Feet (1 Meter)
Max. Length	6 Feet (2 Meter)
Max. Heat Transfer Resistance Value for Flooring Coverings	1.0 hr x °F x ft <sup>2</sup> /BTU (0.15 m <sup>2</sup> K/W)
BTU Output to Output per Square Foot	77.7 BTU/hr per ft <sup>2</sup>
BTU Output to Output per Linear Foot	137.2 BTU/hr per ft





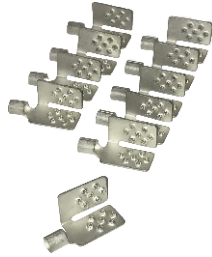
# Carbontec 251-L-500-12



Carbontec 251-L



500W Transformer



Splice Connectors

#### Kit Includes:

- Installation Manual
- Warning Stickers
- Troubleshooting Guide
- Caution Document
- Registration Form
- 500 Watt 24 VAC Transformer
- 7 Splice Connector Crimps
- 12 Linear Feet of Carbontec Material
  - 120-240 Ft<sup>2</sup> Room Size
  - 12 Ft = 483 Watts

#### PROSPECTIVE PROJECT SIZES

**120-240 Ft<sup>2</sup>**

#### TOTAL BTU OUTPUT

**1646.2 BTU**

#### TECHNICAL SPECIFICATIONS

Power Input	120 VAC
Output (Carbontec Heating Film)	22.8 W/ft <sup>2</sup>
Output Per Foot	40.2 W/ft
Secondary Voltage	24 Volts AC
Primary Circuit Breaker Protection	Building Circuit Breaker
Secondary Circuit Breaker Protection	25 Amps
Expected Operating Surface Temperatures	70°F - 104°F (21°C - 42°C)
Min. Bending Radius	2 Inches (50mm)
Material	PET Film with Carbon Fibers and Fillers
Primary Conductor/Transformer	12 AWG (to the Mains and/or Controller)
Secondary Conductor/Transformer	10 AWG, Max. 30 Feet (10 m) in Length
Heating Dimensions, Width	23 Inches (58.42 cm), 21 Inches (53.34 cm) Net Heating Width
Min. Length	3 Feet (1 Meter)
Max. Length	6 Feet (2 Meter)
Max. Heat Transfer Resistance Value for Flooring Coverings	1.0 hr x °F x ft <sup>2</sup> /BTU (0.15 m <sup>2</sup> K/W)
BTU Output to Output per Square Foot	77.7 BTU/hr per ft <sup>2</sup>
BTU Output to Output per Linear Foot	137.2 BTU/hr per ft





# Carbontec 251-L-1000-18



Carbontec 251-L



1000W Transformer



Splice Connectors

#### Kit Includes:

- Installation Manual
- Warning Stickers
- Troubleshooting Guide
- Caution Document
- Registration Form
- 1000 Watt 24 VAC Transformer
- 9 Splice Connector Crimps
- 18 Linear Feet of Carbontec Material
  - 180-360 Ft<sup>2</sup> Room Size
  - 18 Ft = 725 Watts

#### PROSPECTIVE PROJECT SIZES

**180-360 Ft<sup>2</sup>**

#### TOTAL BTU OUTPUT

**2469.6 BTU**

#### TECHNICAL SPECIFICATIONS

Power Input	120 VAC
Output (Carbontec Heating Film)	22.8 W/ft <sup>2</sup>
Output Per Foot	40.2 W/ft
Secondary Voltage	24 Volts AC
Primary Circuit Breaker Protection	Building Circuit Breaker
Secondary Circuit Breaker Protection	25 Amps
Expected Operating Surface Temperatures	70°F - 104°F (21°C - 42°C)
Min. Bending Radius	2 Inches (50mm)
Material	PET Film with Carbon Fibers and Fillers
Primary Conductor/Transformer	12 AWG (to the Mains and/or Controller)
Secondary Conductor/Transformer	10 AWG, Max. 30 Feet (10 m) in Length
Heating Dimensions, Width	23 Inches (58.42 cm), 21 Inches (53.34 cm) Net Heating Width
Min. Length	3 Feet (1 Meter)
Max. Length	6 Feet (2 Meter)
Max. Heat Transfer Resistance Value for Flooring Coverings	1.0 hr x °F x ft <sup>2</sup> /BTU (0.15 m <sup>2</sup> K/W)
BTU Output to Output per Square Foot	77.7 BTU/hr per ft <sup>2</sup>
BTU Output to Output per Linear Foot	137.2 BTU/hr per ft







# Carbontec 251-L-1000-24



Carbontec 251-L



1000W Transformer



Splice Connectors

#### Kit Includes:

- Installation Manual
- Warning Stickers
- Troubleshooting Guide
- Caution Document
- Registration Form
- 1000 Watt 24 VAC Transformer
- 9 Splice Connector Crimps
- 24 Linear Feet of Carbontec Material
  - 240-480 Ft<sup>2</sup> Room Size
  - 24 Ft = 966 Watts

#### PROSPECTIVE PROJECT SIZES

**240-480 Ft<sup>2</sup>**

#### TOTAL BTU OUTPUT

**3292.8 BTU**

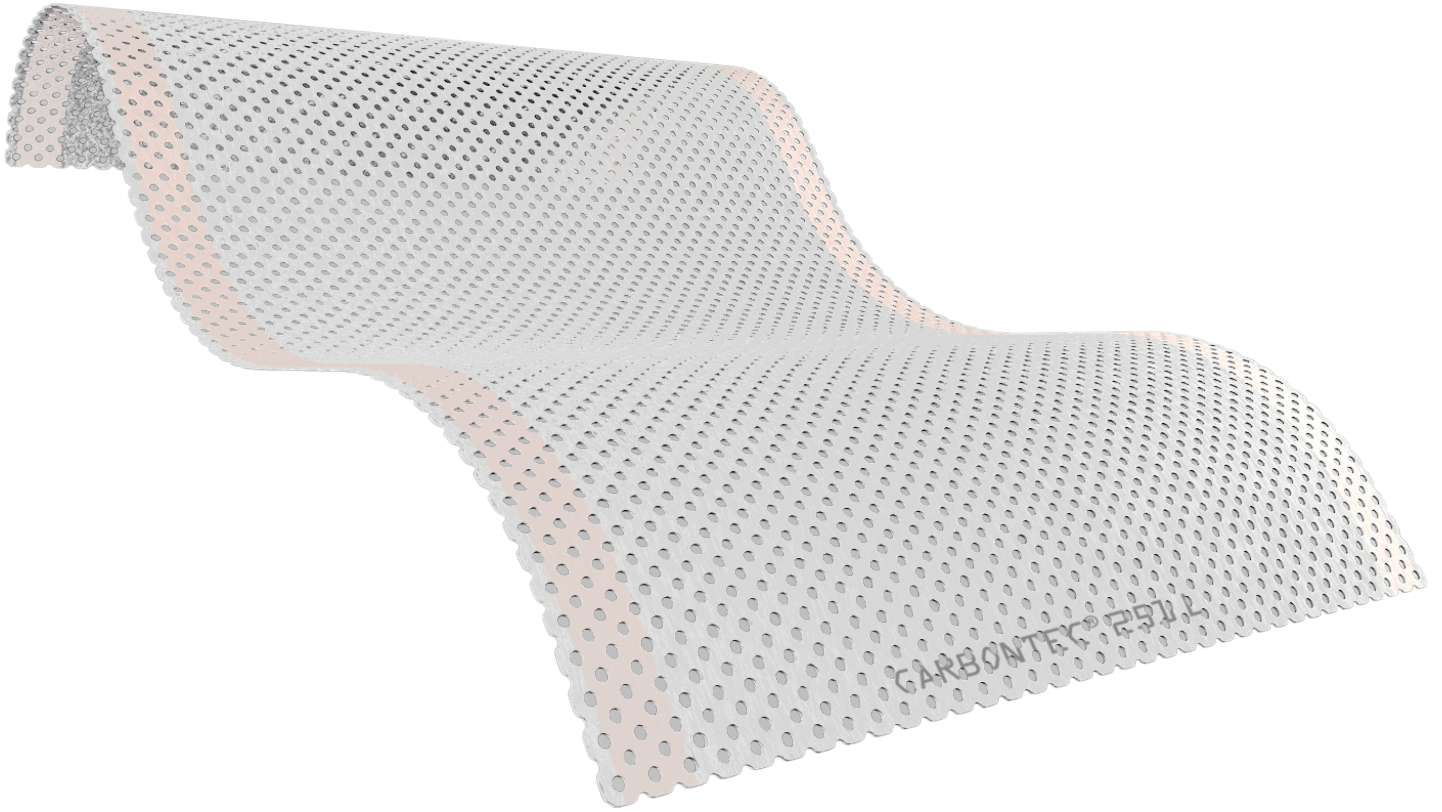
#### TECHNICAL SPECIFICATIONS

Power Input	120 VAC
Output (Carbontec Heating Film)	22.8 W/ft <sup>2</sup>
Output Per Foot	40.2 W/ft
Secondary Voltage	24 Volts AC
Primary Circuit Breaker Protection	Building Circuit Breaker
Secondary Circuit Breaker Protection	25 Amps
Expected Operating Surface Temperatures	70°F - 104°F (21°C - 42°C)
Min. Bending Radius	2 Inches (50mm)
Material	PET Film with Carbon Fibers and Fillers
Primary Conductor/Transformer	12 AWG (to the Mains and/or Controller)
Secondary Conductor/Transformer	10 AWG, Max. 30 Feet (10 m) in Length
Heating Dimensions, Width	23 Inches (58.42 cm), 21 Inches (53.34 cm) Net Heating Width
Min. Length	3 Feet (1 Meter)
Max. Length	6 Feet (2 Meter)
Max. Heat Transfer Resistance Value for Flooring Coverings	1.0 hr x °F x ft <sup>2</sup> /BTU (0.15 m <sup>2</sup> K/W)
BTU Output to Output per Square Foot	77.7 BTU/hr per ft <sup>2</sup>
BTU Output to Output per Linear Foot	137.2 BTU/hr per ft





A Smarter Way To Heat Your Home



**CONTACT LOCAL DISTRIBUTOR  
FOR PRICES**



1920 East Hallandale Beach Blvd. Suite 900A  
Hallandale Beach, FL 33009



855-737-4328  
EXT. 102



info@carbontec.world  
www.carbontec.world