



Baro-Split™ Mini-Split Cables

Mini-split installers and HVAC contractors looking to save on labor costs while meeting local codes for mini-split sub-power feeds are making CCI's Baro-Split the cables of choice.

Baro-Split Corra/Clad® MC cable consists of UL listed THHN soft drawn annealed solid copper conductors, cabled with fillers and wrapped with an overall solid Flexi-Rib™ aluminum sheath. The continuous sheath provides watertight protection and it is covered with a PVC outer jacket for outdoor use or direct burial. Baro-Split Corra/Clad® MC cables are UL approved and meet or exceed the requirements of NEC Article 330.

Baro-Split Compact 600® and Baro-Split Shielded Low Voltage cables offer additional options to provide power and control for your mini-split installations. With safety, versatility and labor savings that can't be beat, choose Baro-Split cables for your next mini-split installation.

Features & Benefits

- Baro-Split™ Corra/Clad® MC Cable
Cost effective, easy to strip and install. Meets all national codes - suitable for outdoor use, under concrete, underground (direct burial) and through interior (finished) walls or ceilings.
- Baro-Split™ Compact 600® Cable
Control tray cable, TPE jacket, direct burial rated. Flexible and easy-to-strip. Solid and stranded conductor available
- Baro-Split™ Shielded Low Voltage Cable
18/2 stranded BC overall shield
18/4 stranded BC overall shield
(ideal for many LG systems)



BARON™

Baro-Split Mini-Split Cables

Part Number	Description	Rating
Baro-Split Corra/Clad MC Cable		
92484-50-09	14/3 Solid THHN with Ground Conductor - 50 ft. Coil *	UL, NEC 330, Direct Burial, 600V
92484-04-09	14/3 Solid THHN with Ground Conductor - 250 ft. Reel	
10576-00-00	Liquid-tight MC Cable Connector	
Baro-Split Compact 600		
60444-50-08	14/4 Solid THHN Compact 600 - 50 ft. Reel	UL, UV, Direct Burial, 600V
60444-04-08	14/4 Solid THHN Compact 600 - 250 ft. Reel	
60410-50-08	14/4 Stranded THHN Compact 600 - 50 ft. Reel	
60410-04-08	14/4 Stranded THHN Compact 600 - 250 ft. Reel	
60446-50-08	16/4 Solid THHN Compact 600 - 50 ft. Reel	
60446-04-08	16/4 Solid THHN Compact 600 - 250 ft. Reel	
60426-50-08	16/4 Stranded THHN Compact 600 - 50 ft. Reel	
60426-04-08	16/4 Stranded THHN Compact 600 - 250 ft. Reel	
Baro-Split Shielded Low Voltage Cable		
95214-50-09	18/2 Stranded BC Shielded - 50 ft. Reel	ETL, CMR/CL3R, NEC 725/800 300V
95214-05-09	18/2 Stranded BC Shielded - 500 ft. Reel	
67003-50-09	18/4 Stranded BC Shielded - 50 ft. Reel **	
67003-05-09	18/4 Stranded BC Shielded - 500 ft. Reel **	

Other constructions, gauges and number of conductors available in each cable type. Please contact the factory for availability. For outdoor connections of Corra/Clad MC cable, use liquid-tight MC connectors

* Includes liquid-tight MC cable connector

** Ideal for many LG systems

Fast easy installation for Corra/Clad MC Cable



1 SCORE

Using cable cutters, score the sheath all the way around at the desired length



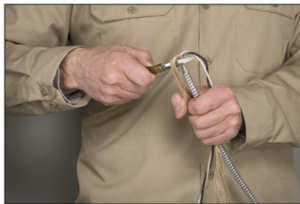
2 SEPARATE

Grip cable with both hands on either side of the score, flex and separate



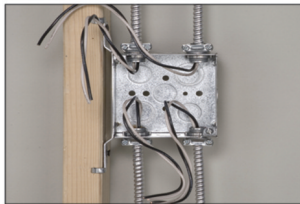
3 STRIP

Strip sheath from cable by pulling firmly



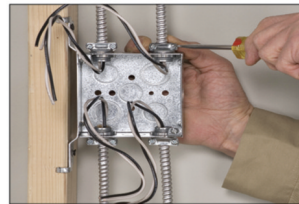
4 CUT

Cut away the protective tape and fillers



5 SPOT

Spot the connector at the proper location in the enclosure & tighten with a lock nut



6 SECURE

Firmly seat cable end into connector & secure by tightening connector with screwdriver while pressing in on the cable

