

APPION™

Star Performance

www.AppionTools.com

HVAC/R Product Catalog



Refrigerant Recovery



AC/R System Evacuation



G5 Twin™



G1 Single™



TEZ 8™



MEGAFLOW™
VACUUM-CERTIFIED
V. C. T.
VALVE CORE REMOVAL TOOL



MEGAFLOW™
VACUUM-CERTIFIED
SPEED KIT™

When you have the Need for Speed.

Table of Contents



<u>Refrigerant Recovery</u>	
G5 Twin	4
G1 Single	6



<u>AC/R System Evacuation</u>	
TEZ Speed System	8
Tez8 Vacuum Pump	12
MegaFlow Speed Kits	15



<u>Tools and Accessories</u>	
MegaFlow Manifolds	14
Refrigerant and Vacuum Hose	14
Valve Core Removal Tools	14
TEZOM Micron-Dry Oil	17

<u>Additional Information</u>	
Parts and Product Index	18
Warranty Information	19

About Appion Inc.:

Appion is Star Performance. We never stop challenging ourselves to develop smaller, lighter, easier, better and less expensive ways to help HVAC/R technicians perform their everyday tasks. Our products are made from decades of manufacturing experience, and always with the needs of the HVAC/R technician in mind.

Appion Inc, based in Colorado, entered the HVAC/R market with the G5Twin, the fastest, lightest, and most versatile refrigerant recovery unit ever available in this market. The innovation continued with the release of the TEZ Speed System, representing the first major advancement in vacuum pump technology in over 40 years. With each of these products, Appion has delivered new ways to improve the results of everyday HVAC/R service, maintenance, and installation, giving technicians a new competitive advantage.

With products designed for the best performance and ease of maintenance, Appion’s commitment is to serve our customers well by providing the most innovative, user-friendly tools and equipment the HVAC/R market has to offer.

Innovative equipment design and manufacturing is just the start. With hassle-free technical and troubleshooting support for the lifetime of every product, Appion stands behind the commitment to customer satisfaction that goes beyond expectations.

How much is your time worth?

Appion tools are designed to deliver the fastest, most efficient, and most reliable results in refrigerant recovery and system evacuation.

When you have the Need for Speed, Appion delivers.

Reliably Fast Refrigerant Recovery

- The **Appion G5 Twin** was designed to handle systems of any size, from ounces to tens of thousands of pounds.
- For larger systems, using two or more G5 Twins can turn even the largest recovery operation into a single day's work.



G5 Twin: Page 4

Ultra-Fast AC/R System Evacuation

The award-winning **TEZ Speed System** can easily save hours or days on any system evacuation:

- **Tez8 Vacuum Pump** with 5-Second Oil Change™
- **MegaFlow Speed Kit** rated to 20 microns
- Multiple, Simultaneous Connections
- **5x-10x Faster** System Evacuation
- Field Serviceable and easy to maintain; the Tez8 can be rebuilt in the field in just 1 hour



Tez Speed System: Page 8

Tools and Accessories for Recovery & Evacuation



MegaFlow Manifolds, Hoses and Tools: Page 14

PATENTS PENDING

G5Twin™

CYLINDER / CONDENSER



Easy to Clean Filter Screen

Simple Two Valve Control

Field Serviceable:
Easy to Replace Gauges

Massive Cooling Twin Condensers

Industrial Heavy Duty

- Chillers
- Supermarkets
- Ships
- Ice Rinks
- Horizontally Opposing Twin Cylinders and Twin Condensers for ultra-fast recovery
- Recovery rates of 0.62 lbs./minute vapor and 6.22 lbs./minute liquid (ARI 740-98 ratings R22)
- Permanently-lubricated, bearing-lined crankcase is **isolated from refrigerant**, eliminating bearing contamination
- Pumps liquid and vapor with no throttling
- 7-inch, 10-blade turbine fan blasts **600 cfm of cooling air** over the twin condensers and twin cylinder heads
- Operates up to **50°F (10°C) cooler** for maximum reliability and speed even in the highest ambient conditions

Part #: G5TWIN

Dimensions and Power		
Length	13.75 in.	349 mm
Height	10.30 in.	262 mm
Width	9.40 in.	239 mm
Weight	24 Lbs.	11 Kgs.
Power	115 VAC, 60 Hz, 10 Amps Int'l: 230 VAC, 50 Hz, 5 Amps Japan: 100 VAC, 60 Hz, 10 Amps	

**Up to 4x
Faster**

**Pumps R410a
Liquid/Vapor**



Industrial/Commercial Recovery

At only **24 lbs.** (11 kgs.), the G5 Twin is the **smallest and lightest** recovery machine capable of handling the tough demands of industrial/commercial refrigerant recovery.

PATENTS PENDING



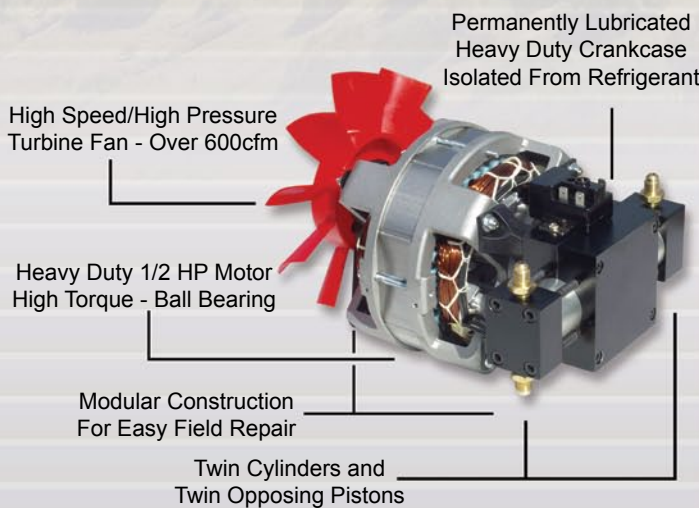
When you have the Need for Speed

Across the board, the G5 Twin is **up to 4 times faster** in all conditions compared to units in its class, and its rugged compressor design ensures consistent high performance for the life of the machine.

G5 Twin Recovery Rates			
Refrigerant	Push-Pull	Liquid	Vapor
R-134a	11.09 lb/min	4.34 lb/min	0.42 lb/min
	5.03 kg/min	1.97 kg/min	0.19 kg/min
R-22	16.62 lb/min	6.22 lb/min	0.62 lb/min
	7.54 kg/min	2.82 kg/min	0.28 kg/min
R-407c	17.61 lb/min	7.01 lb/min	0.55 lb/min
	7.99 kg/min	3.18 kg/min	0.25 kg/min
R-410a	10.21 lb/min	3.48 lb/min	0.66 lb/min
	4.63 kg/min	1.58 kg/min	0.30 kg/min

Certified for use with Class III, IV and V Refrigerants, and compatible with all common refrigerant oils, including mineral, PAG and POE.

UL CERTIFIED
Per ARI Standard 740-98
To meet or exceed EPA regulations.
For use with class III, IV and V refrigerants.



Ultra-Reliable to the Core

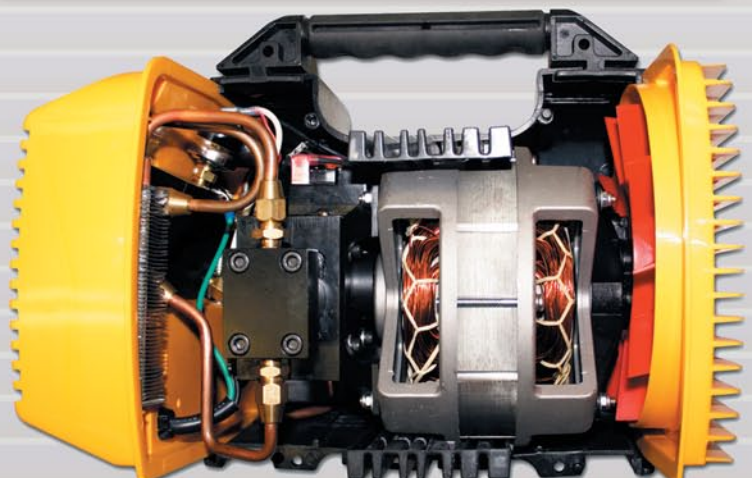
Only Appion recovery machines are built around a **refrigerant-isolated crankcase**. This means the bearings aren't washed in the corrosive acids, sludge and debris brought in by recovered refrigerant.

The G5 Twin is also equipped with a 7-inch, 10-blade turbine fan, twin cylinders and twin condensers, resulting in a high-performance, low-maintenance, recovery machine **you can depend on**.

Fast & Easy Field Serviceability

Modular design makes it easy to rebuild the entire unit in 20-30 minutes in the field.

Field Repair Parts & Accessories	
AY0171	Inlet Filter Screen Pack (set of 4)
GA0700	0-700 PSI Gauge (Input & Output)
KTF032	Filter Dryer and Hose Kit (Size 032)
KTG515	Piston Seal Replacement Kit
KTG520	Twin Compressor Rebuild Kit
KTG535	Front Ball Valve Seal Kit



PATENTS PENDING

G1 Single™

SINGLE CYLINDER RECOVERY



Economical Standard Duty

- Ductless Splits
- PTACs
- Heat Pumps
- Vending

Part #: G1SINGLE

Dimensions and Power		
Length	11.38 in.	289 mm
Height	10.30 in.	262 mm
Width	9.40 in.	239 mm
Weight	22 Lbs.	10 Kgs.
Power	115 VAC, 60 Hz, 10 Amps Int'l: 230 VAC, 50 Hz, 5 Amps Japan: 100 VAC, 60 Hz, 10 Amps	

Easy to Clean Filter Screen

High Speed/High Pressure Turbine Fan - Over 600cfm

**Pumps R410a
Liquid/Vapor**



Permanently Lubricated Heavy Duty Crankcase Isolated From Refrigerant

- Easy to use, ideal for residential and appliance recovery jobs
- Comparable recovery rates to larger machines, without the bulk and hassle
- Permanently-lubricated crankcase is **isolated from refrigerant**, eliminating bearing contamination
- Pumps liquid and vapor, no throttling
- Certified for use with Class III, IV and IV refrigerants, including R410a

Field Repair Parts & Accessories	
AY0171	Inlet Filter Screen Pack (set of 4)
GA0700	0-700 PSI Gauge (Input & Output)
KTF032	Filter Dryer and Hose Kit (Size 032)
KTG142	Piston Seal Replacement Kit
KTG166	Single Compressor Rebuild Kit

G1 Single Recovery Rates			
Refrigerant	Push-Pull	Liquid	Vapor
R-134a	9.44 lb/min	5.20 lb/min	0.22 lb/min
	4.28 kg/min	2.36 kg/min	0.10 kg/min
R-22	10.80 lb/min	8.55 lb/min	0.26 lb/min
	4.90 kg/min	3.88 kg/min	0.12 kg/min
R-407c	11.33 lb/min	5.84 lb/min	0.31 lb/min
	5.14 kg/min	2.65 kg/min	0.14 kg/min
R-410a	12.17 lb/min	4.32 lb/min	0.26 lb/min
	5.52 kg/min	1.96 kg/min	0.12 kg/min



Only 22 lbs.!

Certified for use with Class III, IV and V Refrigerants, and compatible with all common refrigerant oils, including mineral, PAG and POE.

UL CERTIFIED

Per ARI Standard 740-98
To meet or exceed EPA regulations.
For use with class III, IV and V refrigerants.

PATENTS PENDING

The W.S.R. Advantage:

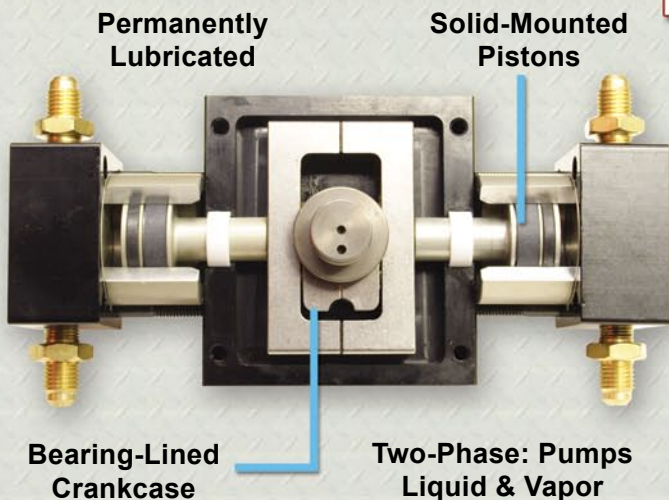
Weight, Speed and Reliability

Light The Weight Advantage

- At **only 24 lbs.** (11 kgs.), the **G5 Twin** is the smallest and lightest recovery machine capable of handling the tough demands of industrial/commercial refrigerant recovery.
- The **G1 Single** weighs just **22 lbs.** (10 kgs.), yet it easily delivers comparable recovery rates to larger single-cylinder units, without the bulk and hassle.



The Reliability Advantage



- The permanently-lubricated crankcase is **isolated from refrigerant**, eliminating bearing contamination.
- The solid-mounted pistons **eliminate wrist pins and bushing wear**, ensuring full-speed recovery for the entire life of the machine.
- The bearing-lined crankcase evenly spreads the load of each stroke, **eliminating compressor lock-up**.

The Speed Advantage

- This custom 7-inch, 10-blade turbine fan blasts **600 cfm** of high static pressure cooling air through the machine.
- Up to **50°F (10°C) cooler** compressor heads so refrigerant stays cool and dense, maximizing throughput even in the highest ambient conditions.
- Entire unit runs cooler, leading to better operation and longer life.



PATENTS PENDING

TEZ™ SPEED SYSTEM

2010
HVAC Comfortech
Voted #1 in Tools

2010 DDA
Gold Award
Winner



How much is your time worth?

Evacuation is often a lengthy process, sometimes taking days or weeks to complete.

Additionally, wet or saturated systems can make evacuation a technician's nightmare:

- Water gets trapped in POE oil;
- Water vapor saturates the vacuum pump oil;
- The evacuation process stalls.

When you have the Need for Speed.

The **TEZ™ Speed System™** was designed so that technicians can easily **save hours or days** on any size system evacuation, making it faster and easier to properly evacuate a system.

The TEZ Speed System

Featuring the
Tez8™ Vacuum Pump
and MegaFlow™ Speed Kit™

5x-10x Faster Evacuation:

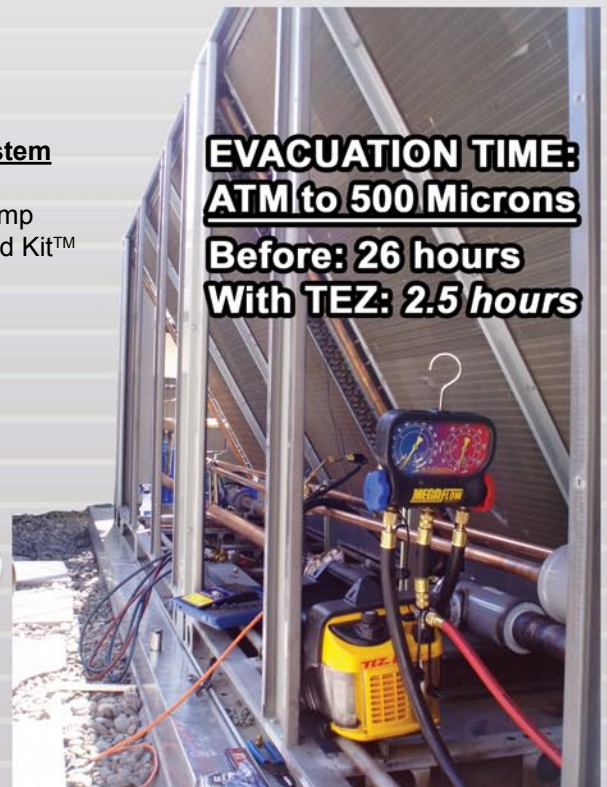
Using multiple 3/8" and 1/2" connections can deliver a time savings ratio of **at least 5-to-1** (up to 10-to-1) on residential, commercial and industrial job sites (compared to 1/4" connections).

The Importance of Evacuation

More than 50% of U.S. energy production is used by the HVAC/R industry. Proper system evacuation is directly related to AC/R system efficiency, which has a direct impact on the energy consumption of the entire industry.

**EVACUATION TIME:
ATM to 500 Microns**

**Before: 26 hours
With TEZ: 2.5 hours**



250-ton rooftop chiller in Denver, CO

PATENTS PENDING

TEZ Speed System and the 1-Day Evacuation

Most large evacuation jobs take 2 or more days to complete with a typical vacuum pump and 1/4" or 3/8" hose setup. With the TEZ Speed System, most evacuations are easily completed in less than 1 day. **See Page 10 for examples of "1-Day Evacuations."**

The TEZ Speed System was designed with the "best practices" of evacuation in mind:

- Unrestricted, large-diameter connections
- Maintain performance with "on the fly" oil changes
- Multiple, simultaneous connections
- Vacuum-certified, non-permeating hoses

How much is a day worth?

What is the **real cost** to evacuate an AC/R system?

- Time spent on setup and monitoring the evacuation
- Daily travel time to/from the job site
- Material costs, including vacuum pump oil changes

Assume that it costs \$250/day - just in labor - to evacuate a system (or \$31.25/hour for 8 hours). Your actual costs may be lower... but a typical chiller evacuation can cost **over \$400 per day**.

Save Hours, Save Days, Save Money

An AC/R system needs to be evacuated every time it is exposed to atmosphere (new installations, compressor changes, etc.).

How many evacuations do you perform in a year? 20? 50? 100?

Not Just for Chillers

5x faster evacuation... everywhere.

Where light commercial and residential jobs used to take hours, the TEZ Speed System can get it done in **just minutes**.

Right: The TEZ Speed System evacuates a new split system installation with 279-feet of pipe... from atmosphere to 149 microns in only 22 minutes.

TEZ Speed Savings

The savings add up with every evacuation job:

Typical Evacuation Cost:

\$500 (2 days at \$250/day)

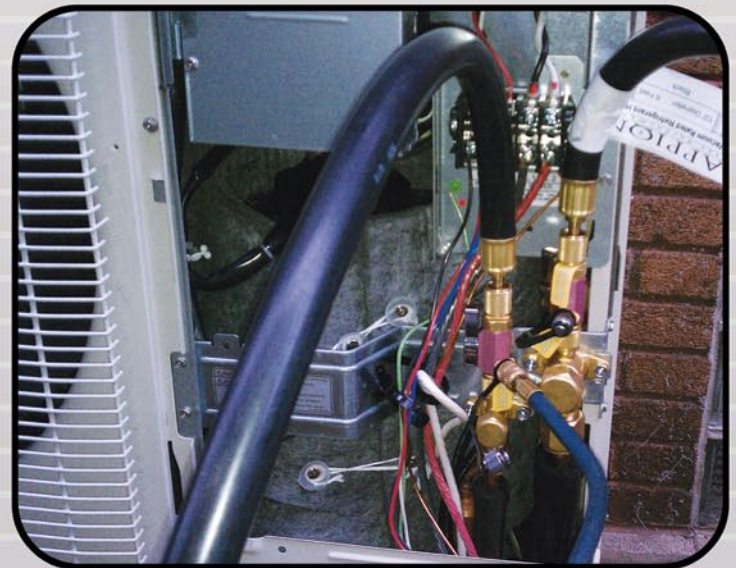
Savings per Evacuation:

\$250+ (1-Day Evacuation)

Savings after 20 Jobs:

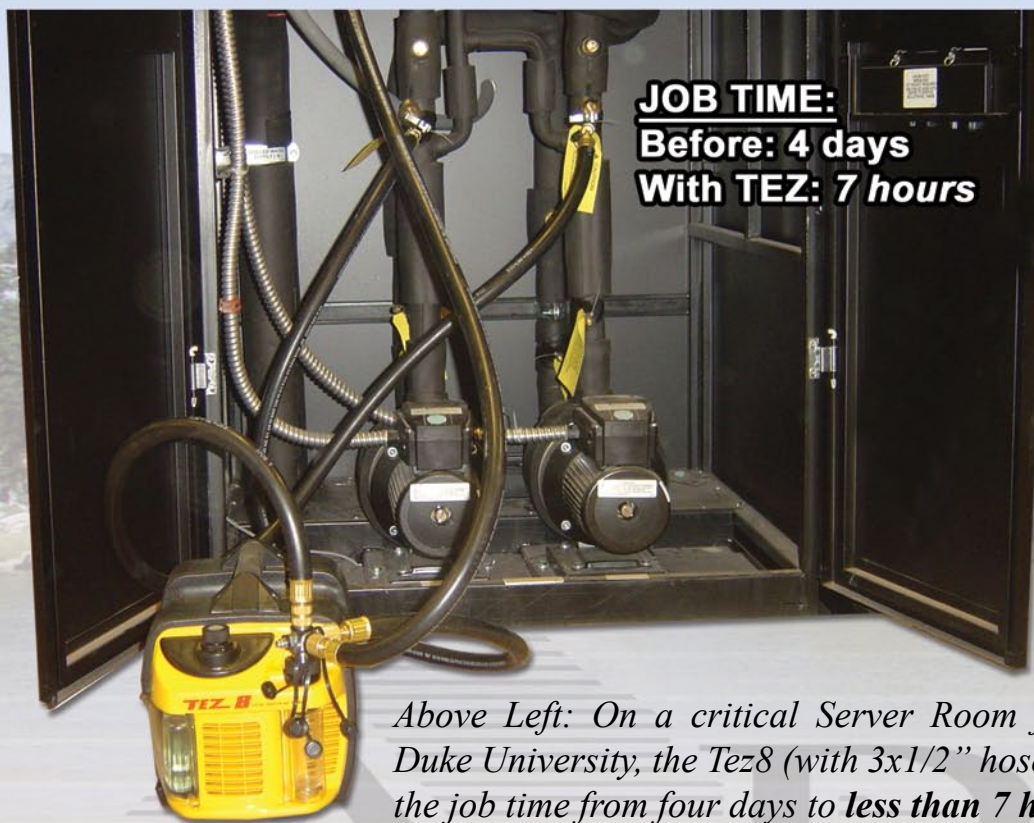
\$5,000 or more

**Turn the page
for examples of →
1-Day Evacuations.**



PATENTS PENDING

AC/R System Evacuation in 1 day or less



JOB TIME:
Before: 4 days
With TEZ: 7 hours

Above Left: On a critical Server Room job at Duke University, the Tez8 (with 3x1/2" hoses) cut the job time from four days to less than 7 hours.



Above: At a large refrigeration job, a Bohn 30HP chiller went from 1000 microns to 500 microns in just 4.25 hours... much faster than a belt-driven pump.

Below: Thanks to massive flow and "on the fly" oil changes, in just 26 hours the Tez8 evacuated six 1500-ton chillers, one at a time, to 500 microns... outperforming a 20-cfm belt driven pump.



JOB TIME:
Before: multiple days
With TEZ: 3.5 hours

Above: This 2,000 ton chiller was pulled from atmosphere to 1,000 microns in only 3.5 hours... instead of days with a belt-driven pump.



JOB TIME:
Before: 2 weeks
With TEZ: 26 hours

Save Hours, Save Days, Save Money

or less, with the **TEZ Speed System**



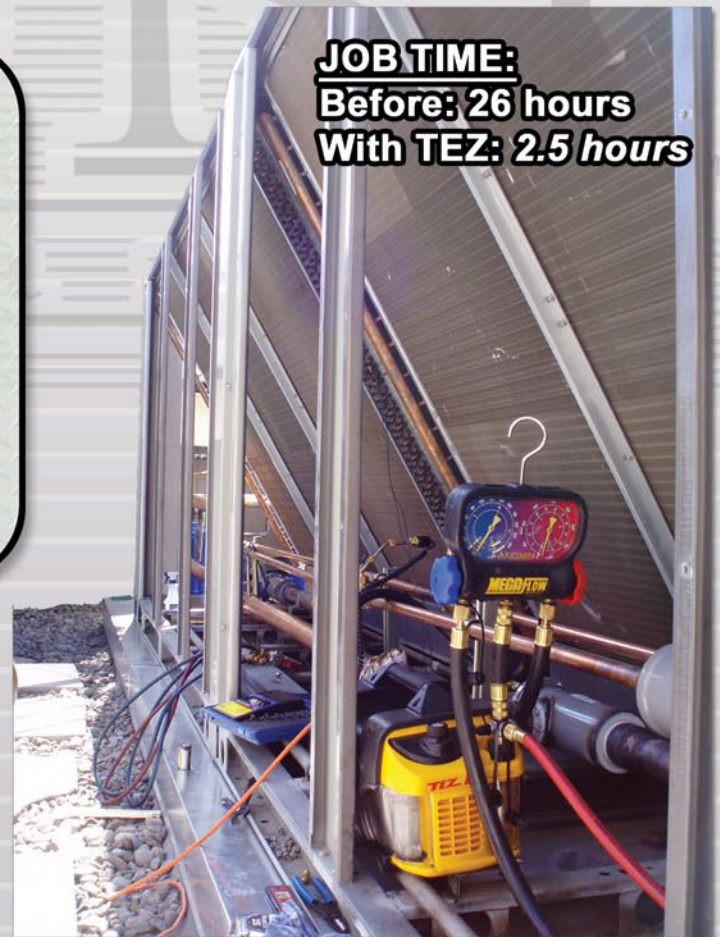
erated warehouse in New Jersey, this
from atmosphere to 350 microns in
aster than the previous 23 hours.

Above: With *five simultaneous full-flow connections*, the
TEZ Speed System evacuates racks like these *up to 10 times*
faster than typical vacuum pumps.

5x-10x Faster Evacuation

The **TEZ Speed System**, using multiple 3/8" and 1/2" connections, can deliver a time savings ratio of **at least 5-to-1** (up to 10-to-1) on residential, commercial and industrial job sites (compared to 1/4" connections).

So for every 5-10 hours you currently spend evacuating, the TEZ Speed System can do it *in 1 hour or less*.



om
rs,

Right: The TEZ Speed System
evacuates a 250-ton chiller from
atmosphere to 500 microns in
only 2.5 hours... a job that used
to take 26 hours.

ave Money.

PATENTS PENDING

TEZ⁸ CFM

TWO STAGE VACUUM PUMP

8cfm (227 l/m) HVAC/R Vacuum Pump

- Field-proven to outperform larger, belt-driven pumps **by hours or days**
- 1/2" and dual 3/8" inputs to allow for maximum input flow - up to **16 times the flow** of pumps using 1/4" inputs
- **No Gas Ballast** - Two-stage exhaust system vents moisture without breaking the vacuum
- **Reliable Startup** - "Soft Start" motor prevents unnecessary wear, reliably starting in extreme ambient conditions - **even as low as -40°F/C**
- Adjustable Multi-Port Input Tree for simultaneous connections and unparalleled performance



Remote Exhaust w/"Garden Hose" Fitting

Easy-to-Clean Debris Filter Screen

Clear Monitor Tube for Easy Debris Monitoring

Wide, Low Stance Prevents Accidental Tipping

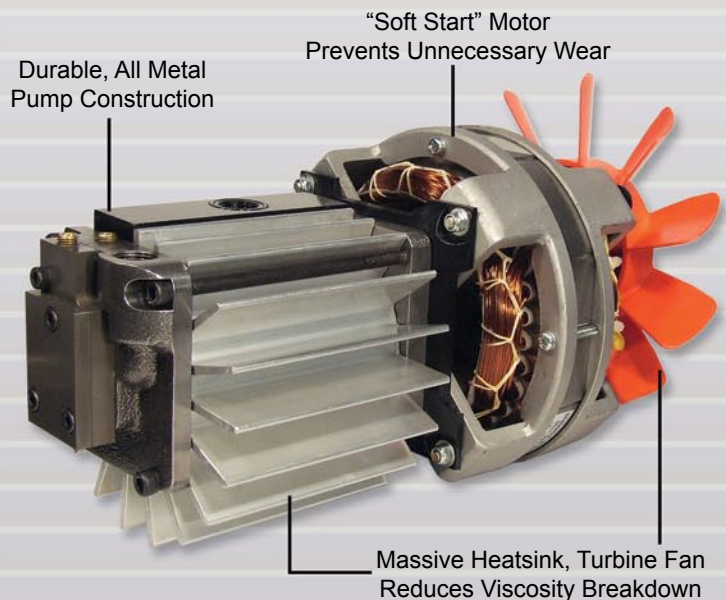
Adjustable Multi-Port Input for 1/4", 3/8" and 1/2" Hoses

Weighs Just 28 Lbs.

Rated To 20 Microns

Part #: TEZ8

Product Specifications		
Length	14.25 in.	362 mm
Height	10.30 in.	262 mm
Width	9.40 in.	239 mm
Weight	28 Lbs.	12.7 Kgs.
Power	115 VAC, 60 Hz, 10 Amps Int'l: 230 VAC, 50 Hz, 5 Amps Japan: 100 VAC, 60 Hz, 10 Amps	
Free Air Displacement	8cfm (227 l/min)	
Ultimate Vacuum	<20 Microns	
Inlet Port Fittings	1/4", 3/8" (x2), 1/2" Flare	



Durable, All Metal Pump Construction

"Soft Start" Motor Prevents Unnecessary Wear

Massive Heatsink, Turbine Fan Reduces Viscosity Breakdown

PATENTS PENDING



- High-speed turbine fan and massive aluminum heatsink keeps pump and oil cooler, reducing oil viscosity breakdown
- Advanced “anti-suckback” eliminates check valves and other flow restrictions
- Lightweight composite resin case for rugged durability and reduced weight
- Low maintenance and **field serviceable**

TEZOM™

5-Second Oil Change™



Hermetically-Sealed TEZOM™ Cartridge
Clean, Dry Oil for Rapid, Deep Evacuation

Intake Monitoring & Control

- **Debris Catch Tube** traps debris with easy-to-clean mesh Filter Screen
- **Automatic Positive Pressure Relief** Eliminates accidental oil showers



- **Oil Separator** - Reduces pump contamination
- **Clearly Visible** - Enhanced intake monitoring allows for better control of the evacuation process

- **5-Second Oil Change™** - Change the oil “on the fly” without breaking the vacuum
- **No Sump** - Oil Cartridge System prevents hidden sludge buildup in the pump
- Cartridge changes flush the pump and remove any remaining contaminants; ideal for ammonia and lithium bromide



Field Repair Parts & Accessories

KTCAP4	4-Port Cap Set for Tez8
KTT841	Tez8 Input O-Ring Kits
KTT855	TEZOM Cartridge Seal Set
KTT881	Tez8 Pump Rebuild Kit
PL7903	Tez8 Oil Port Cover
PL7922	Tez8 Debris Monitor/Catch Tube

PATENTS PENDING

MEGAFLOW™

VACUUM-CERTIFIED

Faster Made Simple

High-Speed Vacuum and Recovery Manifolds

- **Full 1/2" Flow:** Drastically increase speed and reduce evacuation times
- **Vacuum Tree:** 7 ports makes multiple simultaneous connections easy
- **Lightweight & Durable:** Manifold body forged from aircraft-grade aluminum



Part # MGAMAN

Part # MGAMAN-V



Vacuum-Certified Refrigerant Hoses

- **Larger Interior Diameter:** Greater flow than standard hoses
- **Vacuum-Certified:** Won't permeate or collapse in a vacuum

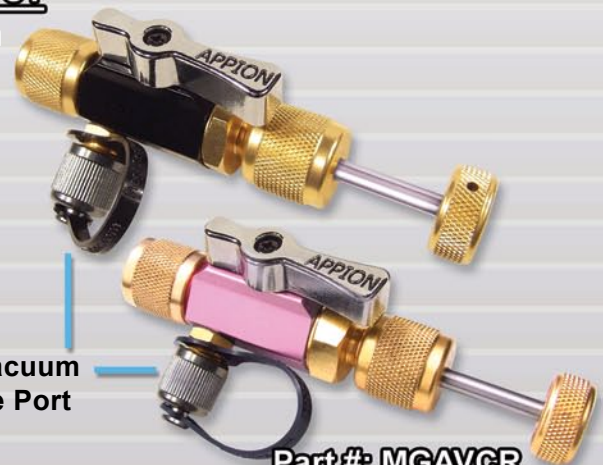
Vacuum-Certified Valve Core Removal Tools

- Remove restrictive access valve cores for high-speed recovery and evacuation
- **Designed for Evacuation:** Double O-ring seals prevent leaks in vacuum
- MegaGrip™ core tip minimizes lost cores
- Use 5/16" for R410a Split Systems - no extra adapters needed

Part #: MGAVGT

1/4" System Connection

1/4" Vacuum Gauge Port



Part #: MGAVCR

5/16" System Connection

**Rated To
20 Microns**

MegaFlow Tools Repair Parts	
AY0376	Manifold Gauge Assembly w/Lens
AY0533	Valve Core Removal Plunger
KTMM03	Manifold Valve Seal Rebuild Kit
KTMV20	Valve Core Removal Tool Seal Kit

PATENTS PENDING

High Speed Connection Kits

MegaFlow Speed Kit for Evacuation

- Vacuum Kit (Part # MGAKIT-V) contains: 2x1/2" and 2x3/8" hoses, 2x1/4" valve core removal tools, 2x vacuum pump connector hoses, and Vacuum Manifold (9 port tree)

MegaFlow Speed Kit for Refrigerant Recovery

- Recovery Kit (Part # MGAKIT-R) contains: 4x3/8" hoses (RYYB), 2x1/4" and 2x5/16" valve core removal tools, and high-resolution Gauge Manifold



Part# MGAKIT-V



Part# MGABAS

MegaFlow Basics 1/2" Hose Evacuation Kit

- Basics Kit (Part # MGABAS) contains: 1x1/2" hose (6-foot) and 1x1/4" valve core removal tool
- Remove restrictive valve cores and use large-diameter vacuum-rated hoses for **up to 10x faster** evacuation (compared to 1/4" connections)

PATENTS PENDING

MegaFlow Components & Accessories		Kit Quantities	
Part No	Description	MGAKIT-V (Evacuation)	MGAKIT-R (Recovery)
MGAMAN	MegaFlow Gauge Manifold		1
MGAMAN-V	MegaFlow Vacuum Manifold	1	
MH380006AAY	6-Foot, 3/8" Dia., 1/4"FL to 1/4"FL Yellow Hose		2
MH380006EAB	6-Foot, 3/8" Dia., 3/8"FL to 1/4"FL Blue Hose	1	1
MH380006EAR	6-Foot, 3/8" Dia., 3/8"FL to 1/4"FL Red Hose	1	1
MH120006EAK	6-Foot, 1/2" Dia., 3/8"FL to 1/4"FL Black Hose	2	
MGH126	6-Inch, 1/2" Dia., 1/2"FL to 1/2"FL Black Hose (Tez8 Vacuum Pump 1/2"FL Connection Hose)	1	
MGH126-E	6-Inch, 1/2" Dia., 1/2"FL to 3/8"FL Black Hose (Universal 3/8" Pump-to-Manifold Connection Hose)	1	
MGAVCR	Vacuum-Certified Valve Core Removal Tool, 5/16"		2
MGAVCT	Vacuum-Certified Valve Core Removal Tool, 1/4"	2	2
PK7494	Speed Kit Carrying Case w/Shoulder Strap	1	1

The TEZ Advantage:

Better Evacuation Results, Faster

To remove system-damaging moisture, AC/R systems must be thoroughly evacuated. Especially when working on R410a systems this process can result in significant downtime - POE refrigeration oils absorb **over 100 times more water than mineral-based oils.**

The Greater the Flow, the Faster It Will Go

Connecting with 1/2" diameter hose will dramatically increase evacuation speeds, even through 1/4" fittings.

The TEZ Speed System includes 3/8" and 1/2" vacuum-certified hoses, and a full, unrestricted 1/2" flow through the Tez8 pump input.

Hose Diameter and Flow Rate: Evacuating a 50-lb. Cylinder			
Vacuum Depth	6'x1/2" hose	6'x3/8" hose	6'x1/4" hose
1000 Microns	3 min.	4 min.	21 min.
500 Microns	6 min.	8 min.	47 min.
200 Microns	29 min.	46 min.	>100 min.

NIST-traceable results. All connections made with 1/4"FL fittings. For even faster results, connect multiple hoses simultaneously.

Remove Restrictive Valve Cores

Access valve cores block **over 90%** of the access port. This can make evacuation take days longer than needed.

- **Vacuum Rated:** The MegaFlow™ Valve Core Removal Tool is rated to hold a 20 micron vacuum, for reliable core removal without the leaks.
- **Pressure Rated:** Replace cores without losing a charge.



Remove valve cores to open up **over 90%** of the access port's interior diameter.

Easy Maintenance for Reliable Performance

- **Field Serviceable:** The entire Tez8 pump assembly can be serviced and rebuilt in under 1 hour with simple hand tools.
- **Self-Cleaning:** The recirculating oil system flushes the oil through the pump, so every cartridge change cleans the interior components.



Field Serviceable
Easy to install Repair Kit



- **Clear Visibility:** The TEZOM™ cartridge allows you to actively monitor the oil, and the Debris Tube traps and reveals intake contamination before it enters the pump.

PATENTS PENDING

TEZOMTM

MICRON - DRY

Synthetic Blend Vacuum Pump Oil



Premium Oil for Superior Performance

- **Hydrophobic Formulation** repels moisture and dirt - stays dry even after exposure to humid atmospheric conditions
- Synthetic blend improves vacuum pump performance and provides greater protection to internal pump components
- Ultra-low vapor pressure oil (<1 microns) for superior vacuum sealing performance
- Longer-lasting performance reduces overall oil consumption and cost
- **Faster evacuation of systems that use hydroscopic POE oil (including R410a)**

TEZOM Micron-Dry Oil Products	
TZM1PK	Pre-Charged TEZOM Oil Cartridge for Appion TEZ Vacuum Pumps
TZM3PK	TEZOM Oil Cartridge 3-Pack
TZMGLN	TEZOM Oil Gallon Bottle

Prolongs Pump Life

Hermetically-Sealed TEZOMTM Cartridge
Clean, Dry Oil for Rapid, Deep Evacuation

TEZOM Oil Cartridge System for TEZ Vacuum Pumps

- **5-Second Oil ChangeTM** - Change the oil "on the fly" without breaking the vacuum
- **Clean and Dry** - Quick and easy oil change removes moisture and dirt, preventing long-term sludge buildup
- **Clearly Visible Results** - Clear cartridge makes it easy to monitor the condition of the oil and verify evacuation results

5-Second Oil ChangeTM



PATENTS PENDING

Product and Parts Index

Appion Product Index		
Pg.	Part No.	Description
6	G1SINGLE	G1 Single Recovery Unit - Single Cylinder
4	G5TWIN	G5 Twin Recovery Unit - Twin Cylinder
15	MGAKIT-R	MegaFlow Recovery Speed Kit
15	MGAKIT-V	MegaFlow Vacuum Speed Kit
15	MGABAS	MegaFlow Basics 1/2" Hose Evacuation Kit
14	MGAMAN	MegaFlow High-Speed Gauge Manifold
14	MGAMAN-V	MegaFlow Multi-Port Vacuum Manifold
14	MGAVCR	MegaFlow 5/16" Vacuum-Rated Valve Core Removal Tool
14	MGAVCT	MegaFlow 1/4" Vacuum-Rated Valve Core Removal Tool
14	MGH126	MegaFlow Hose: 6-inch, 1/2" Dia., 1/2"FL to 1/2"FL Black (Tez8 to Manifold Connection Hose)
14	MGH126-E	MegaFlow Hose: 6-inch, 1/2" Dia., 1/2"FL to 3/8"FL Black (Universal Pump-to-Manifold Connection Hose)
14	MH120006EAK	MegaFlow Hose: 6-foot, 1/2" Dia., 3/8"FL to 1/4"FL Black
14	MH380006AAY	MegaFlow Hose: 6-foot, 3/8" Dia., 1/4"FL to 1/4"FL Yellow
14	MH380006EAB	MegaFlow Hose: 6-foot, 3/8" Dia., 3/8"FL to 1/4"FL Blue
14	MH380006EAR	MegaFlow Hose: 6-foot, 3/8" Dia., 3/8"FL to 1/4"FL Red
14	MHCUSTOM	<i>MegaFlow Hose: Custom lengths and fitting combinations available; contact Appion for pricing and details</i>
12	TEZ8	Tez8 Vacuum Pump 8cfm
17	TZM1PK	Pre-Charged TEZOM Micron-Dry Oil Cartridge
17	TZM3PK	TEZOM Oil Cartridge 3-Pack
17	TZMGLN	TEZOM Micron-Dry Oil Gallon Bottle

G5 Twin Repair Parts and Accessories	
Part No.	Description
AY0030C	Fan Gearbox Assembly and Fan Blade
AY0171	Inlet Filter Screen Pack (set of 4)
EL5017	Motor Start Relay - 115v
EL5028	Motor Start Capacitor - 115v
EL5030	550-PSI High Pressure Switch
EL5120	Power Switch with Breaker
GA0700	0-700 PSI Gauge
KTF032	Filter Dryer and Hose Kit (Size 032)
KTG515	Piston Seal Replacement Kit
KTG520	Twin Compressor Rebuild Kit
KTG535	Front Ball Valve Seal Kit
LB1201	G5 Twin Warning Label
MF3612	Inlet Filter Screen Fitting - 1/4"FL
PL7000	Case Handle
PL7010	Input Knob (blue)
PL7011	Output Knob (red)
PL7020	7-Inch Fan Blade
PL7600	Case Side Panel
PL7601S	G5 Twin Front Panel
PL7602	Case Back Panel
WR9000	Power Cord - 115v

Repair Parts Availability

Repair parts are always available for same-day shipping from our factory in Denver, CO. If any parts you are looking for are not listed here, contact us by phone or email and we will be happy to help.

In addition, our technicians are available by phone and email, making sure that any repair efforts are quick, easy, and thorough.

Lifetime Technical Support

Appion offers technical and troubleshooting support for the lifetime of every product. Regardless of your warranty status, you can always contact us for assistance.

Our website includes additional technical information that can help you experience the fullest potential of our products, making your job quicker and easier.

G1 Single Repair Parts and Accessories	
Part No.	Description
AY0030C	Fan Gearbox Assembly and Fan Blade
AY0171	Inlet Filter Screen Pack (set of 4)
EL5017	Motor Start Relay - 115v
EL5028	Motor Start Capacitor - 115v
EL5030	550-PSI High Pressure Switch
EL5120	Power Switch with Breaker
GA0700	0-700 PSI Gauge
KTF032	Filter Dryer and Hose Kit (Size 032)
KTG142	Piston Seal Replacement Kit
KTG166	Single Compressor Rebuild Kit
LB1417	G1 Single Warning Label
MF3612	Inlet Filter Screen Fitting - 1/4"FL
PL7000	Case Handle
PL7020	7-Inch Fan Blade
PL7600	Case Side Panel
PL7511S	G1 Single Front Panel
PL7602	Case Back Panel
WR9000	Power Cord - 115v

Product and Parts Index (continued)

MegaFlow Repair Parts and Accessories	
Part No.	Description
AY0376	Manifold Gauge Assembly (gauges and lens)
AY0533	Valve Core Removal Plunger Assembly
HS1812	MegaFlow Hose Gasket: 1/2"
HS1814	MegaFlow Hose Gasket: 1/4"
HS1838	MegaFlow Hose Gasket: 3/8"
KTMM03	Manifold Valve Rebuild Kit
KTMM11	Manifold Seal Replacement Kit
KTMV20	Valve Core Removal Tool Rebuilt Kit
MF3953	1/4" MegaSeal Aluminum Cap with Strap
MF3955	3/8" MegaSeal Aluminum Cap with Strap
MF3957	1/2" MegaSeal Aluminum Cap with Strap
PL7332	Manifold Case Back Panel
PL7346	Manifold Case Front Panel
PL7365	Manifold Gauge Display Lens

Tez8 Repair Parts and Accessories	
Part No.	Description
AY0611c	Fan Gearbox Assembly and Fan Blade
AY0672	4-Port Input Assembly
AY0677	Case Left Side Panel (TEZOM Side)
EL5120	Power Switch with Breaker - 115v
KTCAP4	4-Port Cap Set for Tez8
KTT841	Tez8 Input O-Ring Replacement Kit
KTT855	TEZOM Cartridge Seal Kit
KTT881	Tez8 Pump Rebuild Kit
LB1342	Tez8 Warning Label
MF3871	Exhaust Port Cap
MF3818	Tez8 Debris Filter Screen
NB6993	Debris Tube Spring
PL7000	Case Handle
PL7020	7-Inch Fan Blade
PL7602	Case Back Panel
PL7894	TEZOM Protective Door
PL7915	Debris Tube Protective Door
PL7922	Debris Monitor Catch Tube
WR9000	Power Cord - 115v

Contact the Factory

Tel: (303) 937-1580

Fax: (303) 937-1599

Website: www.AppionTools.com

Email: Sales@AppionTools.com -or- Support@AppionTools.com

Warranty Information

For complete warranty details, visit our website at: www.AppionTools.com

In general terms, Appion warranty coverage includes the following:

Recovery Machines and Vacuum Pumps:

Warranty coverage includes over-the-counter exchanges for 90 days after purchase, and no-charge repairs for 1 year after purchase.

Components and Accessories:

Warranty coverage includes over-the-counter exchanges for 90 days after purchase.

Warranty Procedure:

All warranty returns and repairs must receive factory authorization and an RGA Number **prior to any action**. Call or email the factory to request the RGA number. To help us provide the best service, be sure to have the following information available:

- Serial Number of the defective unit (if applicable)
- Purchase Date of the defective unit
- A detailed description of the problem, if possible

Appion Terms and Conditions Apply. Product and warranty information subject to change at any time without notice. Additional and current details are available at our website: www.AppionTools.com.

Faster Recovery/Evacuation Made Simple

Visit AppionTools.com for Free Tutorial Videos



5-Second Oil Change™



5-Minute Self-Flush™



Valve Core Removal Tools

...and more!

Appion Inc.
2800 South Tejon Street
Englewood, CO 80110 USA
Tel: (303) 937-1580
Fax: (303) 937-1599

www.AppionTools.com
Sales@AppionTools.com
Support@AppionTools.com