

**HERITAGE® 16**  
**MODELS 4A6H6024, 036, 048, & 060C**  
with AccuLink™ and Charge Assist™

## Features and Benefits

---

- ◆ **Duration™** 2-stage scroll compressor
- ◆ Efficiency up to 16.5 SEER and 9 HSPF
- ◆ All aluminum **Spine Fin™** coil
- ◆ **Easy-Sess™** service access for installation, service and maintenance
- ◆ **Comfort “R”™** mode approved
- ◆ **AccuLink™** System-only two wire control connection
- ◆ **Charge Assist™** Fast/accurate charging every time
- ◆ Low noise rating
- ◆ Attractive warm gray cabinet with accent Grill, Badge and Grill Caps
- ◆ Corrosion resistant finish and fasteners
- ◆ **DuraBase™** base pan won't rust, drains completely
- ◆ Control and service valve cover
- ◆ Multi-use service valves
- ◆ Two speed fan motor
- ◆ Full coil protection and seacoast shield
- ◆ Liquid line filter-drier
- ◆ Compressor Sound Insulator
- ◆ American Standard and Heritage® 16 badge identifier
- ◆ Factory installed start kit on 036 and 060 models
- ◆ Compressor sump heat
- ◆ High pressure switch and internal compressor temperature/pressure protection
- ◆ Vertical air discharge
- ◆ Factory supplied charge of R-410A refrigerant
- ◆ Electronic demand defrost control
- ◆ Low ambient cooling to 55°F. as shipped
- ◆ Optional extended warranties

# Contents

---

<b>Features and Benefits</b>	<b>2</b>
<b>General Data</b>	<b>4</b>
Product Specifications	4
A-weighted Sound Power Level [dB(A)]	4
Accessory Description and Usage	5
ARI Standard Capacity Rating Conditions	5
<b>Model Nomenclature</b>	<b>6</b>
<b>Electrical Data</b>	<b>7</b>
<b>Dimensions</b>	<b>10</b>
<b>Mechanical Specification Options</b>	<b>11</b>

# General Data

## Product Specifications

Model No. ①	4A6H6024C1	4A6H6036C1	4A6H6048C1	4A6H6060C1
Electrical Data V/Ph/Hz ②	230/1/60	230/1/60	230/1/60	230/1/60
Min Cir Ampacity	13	24	28	35
Max Fuse Size (Amps)	20	40	45	60
Compressor	DURATION® - SCROLL	DURATION® - SCROLL	DURATION® - SCROLL	DURATION® - SCROLL
RL AMPS - LR AMPS	10.3 - 52	16.7 - 82	21.2 - 96	25.6 - 118
Outdoor Fan FL Amps	.60	2.80	1.10	2.80
Fan HP	1/15	1/3	1/5	1/3
Fan Dia (inches)	23	27.6	27.6	27.6
Coil	Spine Fin™	Spine Fin™	Spine Fin™	Spine Fin™
Refrigerant R-22	5/12-LB/OZ	8/4-LB/OZ	9/1-LB/OZ	11/3-LB/OZ
Line Size - (in.) O.D. Gas ③	5/8	3/4	7/8	7/8
Line Size - (in.) O.D. Liquid ③	5/16	3/8	3/8	3/8
Dimensions H x W x D (Crated)	42 x 30.1 x 33	42.4 x 35.1 x 38.7	46.4 x 35.1 x 38.7	46.4 x 35.1 x 38.7
Weight - Shipping	240	273	285	328
Weight - Net	211	238	250	292
Start Components	NO	YES	NO	YES
Sound Enclosure	YES	YES	YES	YES
Compressor Sump Heat	YES	YES	YES	YES
<b>Optional Accessories: ④</b>				
Rubber Isolator Kit	BAYISLT101	BAYISLT101	BAYISLT101	BAYISLT101
Snow Leg - Base & Cap 4" High	BAYLEGS002	BAYLEGS002	BAYLEGS002	BAYLEGS002
Snow Leg - 4" Extension	BAYLEGS003	BAYLEGS003	BAYLEGS003	BAYLEGS003
Hard Start Kit Scroll	BAYKSKT260		BAYKSKT260	
Extreme Condition Mounting Kit	BAYECMT023	BAYECMT004	BAYECMT004	BAYECMT004
Auto Charge Solenoid Kit	BAYCAKT001	BAYCAKT001	BAYCAKT001	BAYCAKT001
24 Volt Wiring Harness	BAYACHP024A	BAYACHP024A	BAYACHP024A	BAYACHP024A
Refrigerant Lineset ⑤	TAYREFLN6*	TAYREFLN7*	TAYREFLN3*	TAYREFLN3*

① Certified in accordance with the Air-Source Unitary Heat Pump Equipment certification program which is based on ARI Standard 210/240.

② Calculated in accordance with N.E.C. Only use HACR circuit breakers or fuses.

③ Standard line lengths - 60'. Standard lift - 25' Suction and Liquid line.

For Greater lengths and lifts refer to refrigerant piping software Pub# 32-3312-01. (\*denotes latest revision)

④ For accessory description and usage, see page 5.

⑤ \* = 15, 20, 25, 30, 40 and 50 foot lineset available.

## A-weighted Sound Power Level [dB(A)]

MODEL	SOUND POWER LEVEL [dB(A)]	A-WEIGHTED FULL OCTAVE SOUND POWER LEVEL dB - [dB(A)]							
		63	125	250	500	1000	2000	4000	8000
4A6H6024C1	71	45.1	53.1	55.6	66.4	63.9	60.3	53.9	45.4
4A6H6036C1	74	51.2	58.3	60.2	68.9	66.8	60.6	54.6	49.8
4A6H6048C1	75	50.2	56.8	60.9	68.5	69.4	61.2	55.8	51
4A6H6060C1	75	52.7	54.6	60.6	71.6	68.8	61.8	59	50.4

Note: Rated in accordance with AHRI Standard 270-2008

# General Data

---

## Accessory Description and Usage

**24 Volt Wiring Harness** — Used to wire a communicating outdoor unit to an existing 24 Volt indoor section.

**Charge Assist™ Solenoid Kit** — fast/accurate charging every time.

**Rubber Isolators** — 5 large rubber donuts to isolate condensing unit from transmitting energy into mounting frame or pad. Use on any application where sound transmission needs to be minimized.

**Extreme Condition Mount Kit** — Bracket kits to securely mount condensing unit to a frame or pad without removing any panels. Use in areas with high winds, or on commercial roof tops, etc.

**Low Ambient Cooling** — For low ambient cooling below 55° see Application Guide SSC-APG008-EN.

## ARI Standard Capacity Rating Conditions

### ARI STANDARD 210/240 RATING CONDITIONS —

- (A) Cooling 80°F DB, 67°F WB air entering indoor coil, 95°F DB air entering outdoor coil.
- (B) High Temperature Heating 47°F DB, 43°F WB air entering outdoor coil, 70°F DB air entering indoor coil.
- (C) Low Temperature Heating 17°F DB, 15°F WB air entering outdoor coil, 70°F DB air entering indoor coil.
- (D) Rated indoor airflow for heating is the same as for cooling.

**ARI STANDARD 270 RATING CONDITIONS** — (Noise rating numbers are determined with the unit in cooling operation.) Standard Noise Rating number is at 95°F outdoor air.

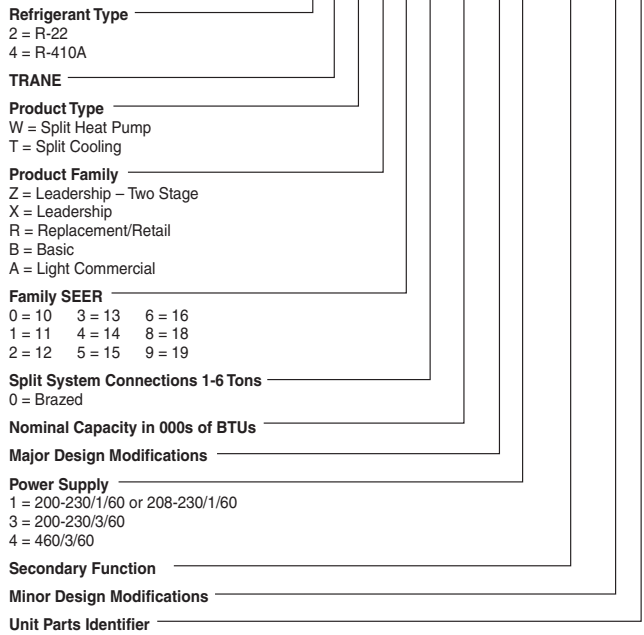


ARI Standard  
210/240 UHP

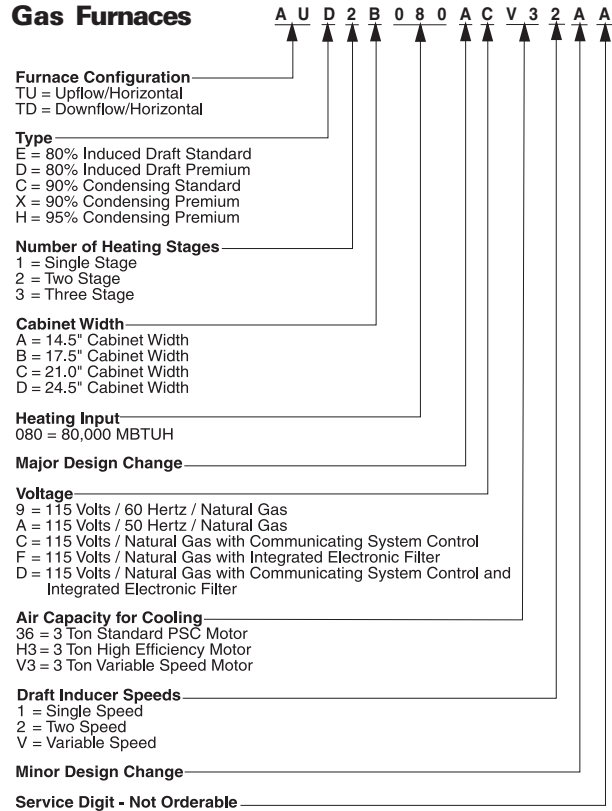


# Model Nomenclature

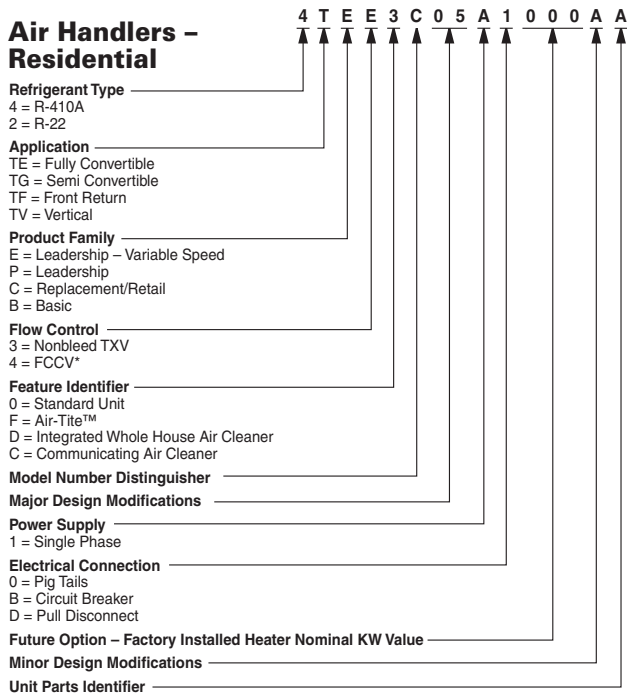
## Outdoor Units



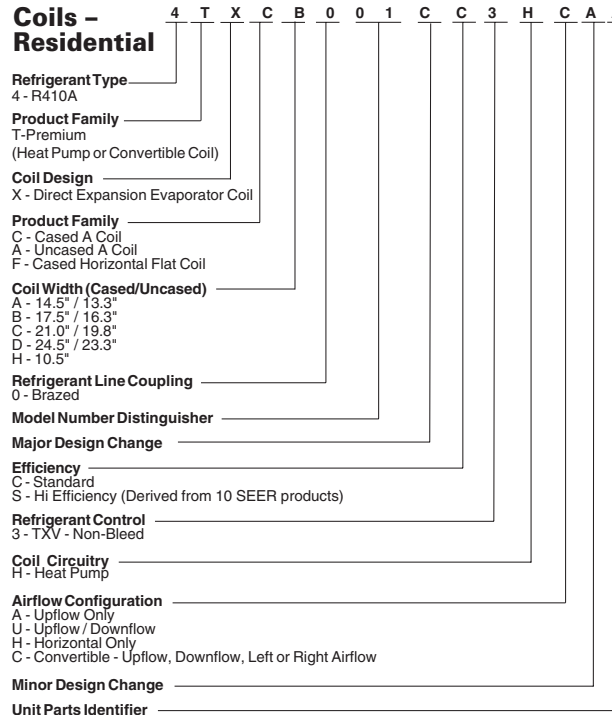
## Gas Furnaces



## Air Handlers – Residential



## Coils – Residential



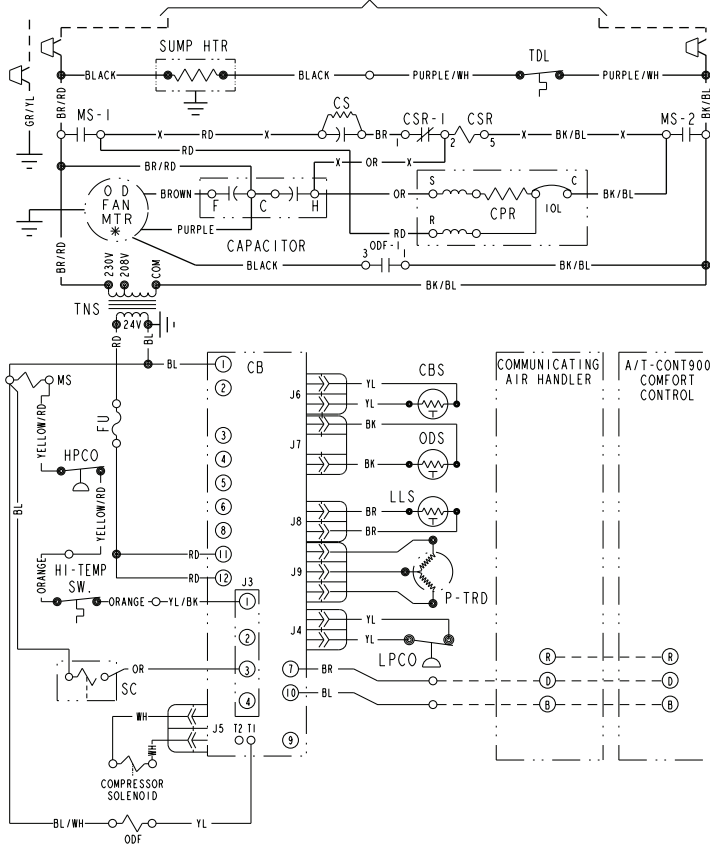
NOTE: There will be a phase-in of new model numbers for new air handlers over next 2 years.  
\*Shipped with R-22 FCCV

# Electrical Data

## Schematic Diagrams (SEE LEGEND)

### 4A6H6024C, 048C

TO POWER SUPPLY PER UNIT NAMEPLATE AND LOCAL CODES



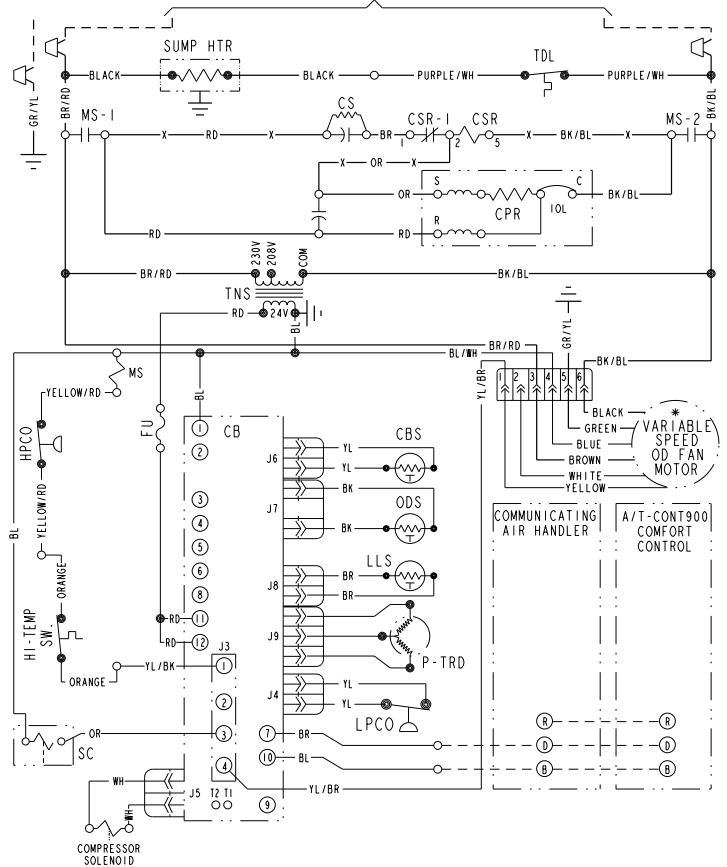
- NOTES:
1. LOW VOLTAGE (24 V.) FIELD WIRING MUST BE 18 AWG MIN.
  2. FOR 208V OPERATION, SWAP BR/RD TRANSFORMER LEAD AND INSULATED CAP ON 208V CENTER TRANSFORMER TERMINAL.

<p><b>⚠ WARNING</b> HAZARDOUS VOLTAGE! DISCONNECT ALL ELECTRIC POWER INCLUDING REMOTE DISCONNECTS BEFORE SERVICING. FAILURE TO DISCONNECT POWER BEFORE SERVICING CAN CAUSE SEVERE PERSONAL INJURY OR DEATH!</p>	<p><b>⚠ CAUTION</b> USE COPPER CONDUCTORS ONLY! UNIT TERMINALS ARE NOT DESIGNED TO ACCEPT OTHER TYPES OF CONDUCTORS. FAILURE TO DO SO MAY CAUSE DAMAGE TO THE EQUIPMENT!</p>
---	--

**NOTE**  
THREE PHASE MOTOR (S) FACTORY SUPPLIED IN THIS EQUIPMENT PROTECTED UNDER PRIMARY SINGLE-PHASE CONDITIONS.

### 4A6H 6036C

TO POWER SUPPLY PER UNIT NAMEPLATE AND LOCAL CODES



- NOTES:
1. LOW VOLTAGE (24 V.) FIELD WIRING MUST BE 18 AWG MIN.
  2. FOR 208V OPERATION, SWAP BR/RD TRANSFORMER LEAD AND INSULATED CAP ON 208V CENTER TRANSFORMER TERMINAL.

<p><b>⚠ WARNING</b> HAZARDOUS VOLTAGE! DISCONNECT ALL ELECTRIC POWER INCLUDING REMOTE DISCONNECTS BEFORE SERVICING. FAILURE TO DISCONNECT POWER BEFORE SERVICING CAN CAUSE SEVERE PERSONAL INJURY OR DEATH!</p>	<p><b>⚠ CAUTION</b> USE COPPER CONDUCTORS ONLY! UNIT TERMINALS ARE NOT DESIGNED TO ACCEPT OTHER TYPES OF CONDUCTORS. FAILURE TO DO SO MAY CAUSE DAMAGE TO THE EQUIPMENT!</p>
---	--

**NOTE**  
THREE PHASE MOTOR (S) FACTORY SUPPLIED IN THIS EQUIPMENT PROTECTED UNDER PRIMARY SINGLE-PHASE CONDITIONS.

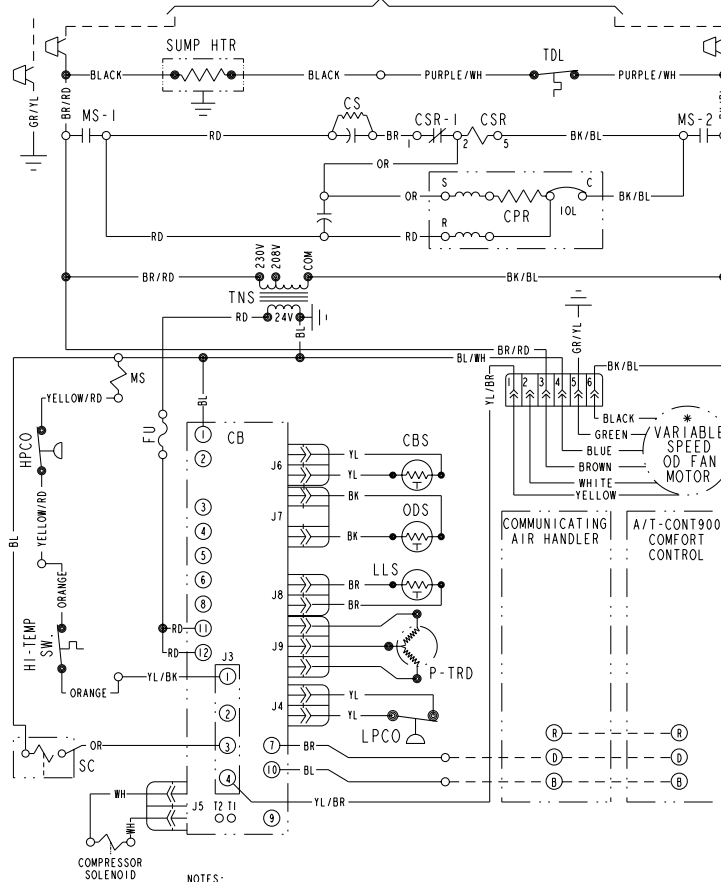
# Electrical Data

## Schematic Diagrams

(SEE LEGEND)

### 4A6H6060C

TO POWER SUPPLY PER UNIT NAMEPLATE AND LOCAL CODES



- NOTES:
1. LOW VOLTAGE (24 V.) FIELD WIRING MUST BE 18 AWG MIN.
  2. FOR 208V OPERATION, SWAP BR/RD TRANSFORMER LEAD AND INSULATED CAP ON 208V CENTER TRANSFORMER TERMINAL.

<p><b>⚠ WARNING</b> HAZARDOUS VOLTAGE! DISCONNECT ALL ELECTRIC POWER INCLUDING REMOTE DISCONNECTS BEFORE SERVICING. FAILURE TO DISCONNECT POWER BEFORE SERVICING CAN CAUSE SEVERE PERSONAL INJURY OR DEATH!</p>	<p><b>⚠ CAUTION</b> USE COPPER CONDUCTORS ONLY! UNIT TERMINALS ARE NOT DESIGNED TO ACCEPT OTHER TYPES OF CONDUCTORS. FAILURE TO DO SO MAY CAUSE DAMAGE TO THE EQUIPMENT!</p>
---	--

**NOTE**  
THREE PHASE MOTOR (S) FACTORY SUPPLIED IN THIS EQUIPMENT PROTECTED UNDER PRIMARY SINGLE-PHASE CONDITIONS.



# Electrical Data

## Schematic Diagrams

### LEGEND

COLOR OF WIRE		
BK/BL	BLACK WIRE WITH BLUE MARKER	
COLOR OF MARKER		
BK	BLACK	OR ORANGE
BL	BLUE	RD RED
BR	BROWN	WH WHITE
YL	YELLOW	GR GREEN
		PR PURPLE

### SYMBOLS

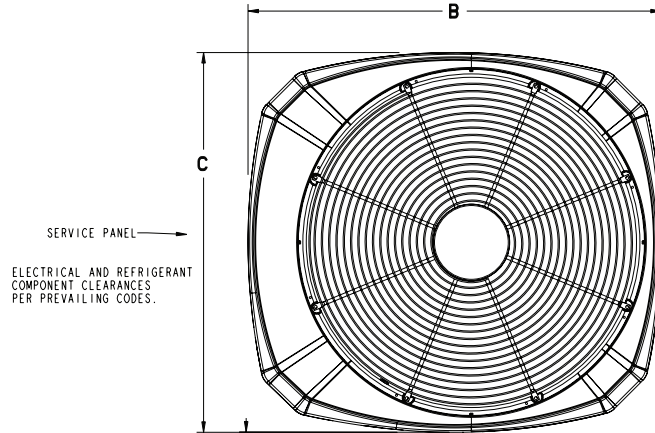
	24 V.	} FACTORY WIRING
	LINE V.	
	24 V.	} FIELD WIRING
	LINE V.	
	FIELD INSTALLED FACTORY WIRING	
	GROUND	
	JUNCTION	
	WIRE NUT OR CONNECTOR	
	COIL	
	CAPACITOR	
	RELAY CONTACT (N.O.)	
	RELAY CONTACT (N.C.)	
	THERMISTOR	
	INTERNAL OVERLOAD PROTECTOR	
	PRESSURE ACTUATED SWITCH	
	TEMP. ACTUATED SWITCH	
	POL. PLUG FEMALE HOUSING (MALE TERM.)	
	POL. PLUG MALE HOUSING (FEMALE TERM.)	
	RESISTOR OR HEATING ELEMENT	
	MOTOR WINDING	
	TERMINAL	

CA	COOLING ANTICIPATOR	LPCO	LOW PRESSURE CUTOUT SW.
CBS	COIL BOTTOM SENSOR	MS	COMPRESSOR MOTOR CONTACTOR
CF	FAN CAPACITOR	ODA	OUTDOOR ANTICIPATOR
CN	WIRE CONNECTOR	OFT	OUTDOOR FAN THERMOSTAT
CPR	COMPRESSOR	ODS	OUTDOOR TEMPERATURE SENSOR
CR	RUN CAPACITOR	ODT	OUTDOOR THERMOSTAT
CS	STARTING CAPACITOR	RHS	RESISTANCE HEAT SWITCH
CSR	CAPACITOR SWITCHING RELAY	SC	SWITCHOVER VALVE SOLENOID
DFC	DEFROST CONTROL	SM	SYSTEM "ON-OFF" SWITCH
F	INDOOR FAN RELAY	TDL	DISCHARGE LINE THERMOSTAT
HA	HEATING ANTICIPATOR	TNS	TRANSFORMER
HPCO	HIGH PRESSURE CUTOUT SW.	TS	HEATING-COOLING THERMOSTAT
IOL	INTERNAL OVERLOAD PROTECTOR	TSH	HEATING THERMOSTAT

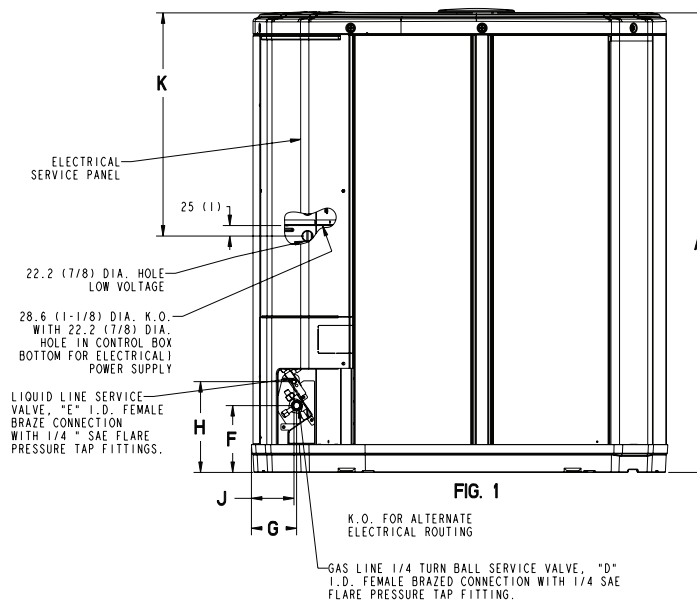
# Dimensions

## 4A6H6 Outline Drawing

Note: All dimensions are in MM (Inches).



TOP DISCHARGE AREA SHOULD BE UNRESTRICTED FOR AT LEAST 1524 (5 FEET) ABOVE UNIT. UNIT SHOULD BE PLACED SO ROOF RUN-OFF WATER DOES NOT POUR DIRECTLY ON UNIT, AND SHOULD BE AT LEAST 305 (12") FROM WALL AND ALL SURROUNDING SHRUBBERY ON TWO SIDES. OTHER TWO SIDES UNRESTRICTED.



MODELS	BASE	A	B	C	D	E	F	G	H	J	K
4A6H6024C	3	933 (36-3/4)	829 (32-5/8)	756 (29-3/4)	5/8	5/16	143 (5-5/8)	92 (3-5/8)	210 (8-1/4)	79 (3-1/8)	508 (20)
4A6H6036C	4	943 (37-1/8)	946 (37-1/4)	870 (34-1/4)	3/4	3/8	152 (6)	98 (3-7/8)	219 (8-5/8)	86 (3-3/8)	508 (20)
4A6H6048C 4A6H6060C	4	1045 (41-17/8)	946 (37-1/4)	870 (34-1/4)	7/8	3/8	152 (6)	98 (3-7/8)	219 (8-5/8)	86 (3-3/8)	508 (20)

From Dwg. D152862 Rev. 21

# Mechanical Specification Options

---

## General

The 4A6H6 is fully charged from the factory for matched indoor section and up to 15 feet of piping. This unit is designed to operate at outdoor ambient temperatures as high as 115°F. Cooling capacities are matched with a wide selection of air handlers and furnace coils that are A.R.I. certified. The unit is certified to UL 1995. Exterior is designed for outdoor application.

## AccuLink™

This outdoor unit contains the AccuLink™ digital communication with 2 wire connection to outdoor and Plug-n-Play set up.

## Charge Assist™

The Charge Assist™ indicates system Charge Status.

## Casing

Unit casing is constructed of heavy gauge, G60 galvanized steel and painted with a weather-resistant powder paint on all louvers, panels, prepaint on all other panels. Corrosion and weather-proof CMBP-G30 DuraBase™ base.

## Refrigerant Controls

Refrigeration system controls include condenser fan, compressor contactor and high pressure switch. High and low pressure controls are inherent to the compressor. A factory installed liquid line drier is standard.

## Compressor

The Duration® 2-stage compressor features internal over temperature and pressure protection and total dipped hermetic motor. Other features include: roto lock suction and discharge refrigerant connections, centrifugal oil pump and low vibration and noise.

## Condenser Coil

The outdoor coil provides low airflow resistance and efficient heat transfer. The coil is protected on all four sides by louvered panels.

## Low Ambient Cooling

As manufactured, this unit has a cooling capability to 55°F. For low ambient cooling below 55° see Application Guide SSC-APG008-EN.

## Comfort Control

AccuLink™ Control with Plug-n-Play set up and 3 wire connection.

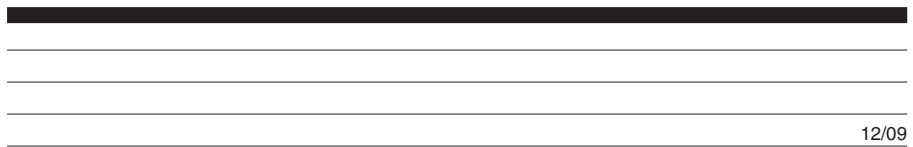


ARI Standard  
210/240 UHP



*American Standard*  
HEATING & AIR CONDITIONING

American Standard Heating & Air Conditioning  
[www.americanstandardair.com](http://www.americanstandardair.com)



12/09

*American Standard Heating & Air Conditioning has a policy of continuous product and product data improvement and it reserves the right to change design and specifications without notice.*