



FOR INDUSTRY PROFESSIONALS

70°C (158°F) High Temp Models  
Featuring



# HIGH TEMP CONDENSER FAN MOTORS

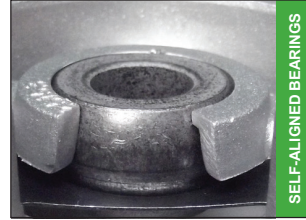
# HIGH TEMP CONDENSER FAN MOTORS

FEATURING



RUGGED BALL BEARING

Rugged Ball bearing design capable of handling high ambient conditions and excessive radial and axial loading.



SELF-ALIGNED BEARINGS

Revolutionary self-aligned bearing system which requires no further lubrication and is capable of all angle mounting. It is NOT a babbit style sleeve bearing.



MULTI-HP CONDENSER

Multi-Horsepower motors are single speed with 2 leads designed to run at a range of load points that correspond to the rated horsepowers. They're easier to install than a 3 lead motor.



CONDENSER MOTOR

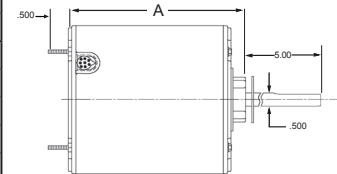
Extended mounting bolts on lead end of motor. For shaft up application, simply reverse the direction of the bolts. Condenser models include Rheem<sup>†</sup> side shell holes.

## (HT) High Temperature Models Feature 158°F (70°C) Ambient Temperature Ratings

Designed specifically for regions subject to high temperatures. Providing superior performance and reliability in high ambient conditions compared to most OEM 104°F (40° C) or standard 140°F (60° C) replacement motors. A premium replacement aftermarket condenser fan motor you can trust, TRADEPRO<sup>®</sup>.

# MOTOR CROSS REFERENCE GUIDE

HP	TRADEPRO	WAGNER	EMERSON	AOS	FASCO	GE	MAGNETEK	MARATHON	DAYTON
1/3	TP-C33-1SP2HT-8	WG840205HT	1875H	FE1038SF	-	3205HS	-	-	AMB19
1/4	TP-C25-1SP2HT-8	WG840204HT	1874H	FE1028SF	-	3204HS	-	-	-
1/4	TP-C25-1SP2HT	WG840728HT	1860H	FSE1026SF	-	3732HS	-	-	-
1/3	TP-C33-1SP2HT	WG840729HT	1861H	FSE1036SF	-	3733HS	-	-	-
1/2	TP-C50-1SP2HT	WG840730HT	1862H	FSE1056SF	-	3734HS	-	-	-
1/3 - 1/5	TP-C33-MHP2HT-8	-	1875H	ORM5488F	-	3459	-	-	-
1/3 - 1/6	TP-C33-MHP2HT	-	3323H	ORM5458F	-	3458H	-	-	-
1/2 - 1/5	TP-C50-MHP2HT	-	5465H	FE6002F	-	-	-	-	-



## Fixed Fractional

VOLTS	SPEED	TRADEPRO	HP	AMP	BEARING	CAP <sup>2</sup>	MOTOR LENGTH (A) DIM
208-230	825	TP-C25-1SP2HT-8	1/4	2.1	BALL	5µF / 370v	4.857"
208-230		TP-C33-1SP2HT-8	1/3	2.4	BALL	7.5µF / 440v <sup>‡</sup>	5.607"
208-230	1075	TP-C25-1SP2HT	1/4	1.5	BALL	5µF / 370v	5.107"
208-230		TP-C33-1SP2HT	1/3	1.8	BALL	7.5µF / 370v	5.607"
208-230		TP-C50-1SP2HT	1/2	3.3	BALL	10µF / 370v	5.857"

## Multi-Horsepower

VOLTS	SPEED	TRADEPRO	HP	BEARING	CAP <sup>2</sup>	MOTOR LENGTH (A) DIM	Full Load Amps					
							3/4 HP	1/2 HP	1/3 HP	1/4 HP	1/5 HP	1/6 HP
208-230	825	TP-C33-MHP2HT-8	1/3 - 1/5	BALL	7.5µF / 440v <sup>‡</sup>	5.607"	-	-	2.4	1.9	1.4	-
208-230	1075	TP-C33-MHP2HT	1/3-1/6	BALL	7.5µF / 370v	4.312"	-	-	2.0	1.7	1.4	1.2
208-230	1075	TP-C50-MHP2HT	1/2-1/5	BALL	15MF / 370V	6.357"	-	2.6	2.3	2	1.7	-

<sup>2</sup>440v may be substituted  
<sup>‡</sup>440 Volt Cap Required

<sup>†</sup>All marks shown are property of their respective owners

